

Technical Service Bulletin

Mazda North American Operations
Irvine, CA 92618-2922



Subject: EXTERIOR LIGHT WARNING WITH DTC B10A3:86	Bulletin No.: 09-011/26
	Last Issued : 02/25/2026

BULLETIN NOTES

This bulletin supersedes the previously issued bulletin(s) listed below. The changes are noted in Red.

Previous TSBs:	Date(s) Issued:
09-019/25	04/15/25
09-039/24	08/20/24

APPLICABLE MODEL(S)/VINS

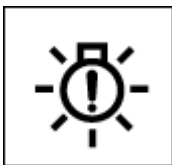
2024-2025 CX-90 with VINS lower than JM3KK*****241940 (produced before April 11, 2025)

2025 CX-70 with VINS lower than JM3KJ*****129500 (produced before April 11, 2025)

2024-2025 MX-5 with VINS lower than JM1ND*****659416 (produced before September 27, 2025)

DESCRIPTION

Some vehicles equipped with the Adaptive Front lighting System (AFS) may exhibit the exterior light warning light/ exterior light warning indication on while driving or when the ignition is turned on and DTC B10A3:86 (Error signal received from swivel actuator (LH)) stored in memory.



Exterior light warning light



Combination light with AFS
(1): Parking light/daytime running light (DRL)

NOTE: The combination light with AFS can be distinguished if it is equipped with the parking light/daytime running light (DRL) that illuminates while the ignition is turned on.

This may be caused by the AFS Control Module detecting a false headlight malfunction. This concern will likely occur when the light returns to the center position after swiveling. To eliminate this concern, the control software of the AFS

CONSUMER NOTICE: The information and instructions in this bulletin are intended for use by skilled technicians. Mazda technicians utilize the proper tools/ equipment and take training to correctly and safely maintain Mazda vehicles. These instructions should not be performed by "do-it-yourselfers." Customers should not assume this bulletin applies to their vehicle or that their vehicle will develop the described concern. To determine if the information applies, customers should contact their nearest authorized Mazda dealership. Mazda North American Operations reserves the right to alter the specifications and contents of this bulletin without obligation or advance notice. All rights reserved. No part of this bulletin may be reproduced in any form or by any means, electronic or mechanical--including photocopying and recording and the use of any kind of information storage and retrieval system ---without permission in writing.

control module has been further modified. Customers having this concern should have their vehicle repaired using the following repair procedure.

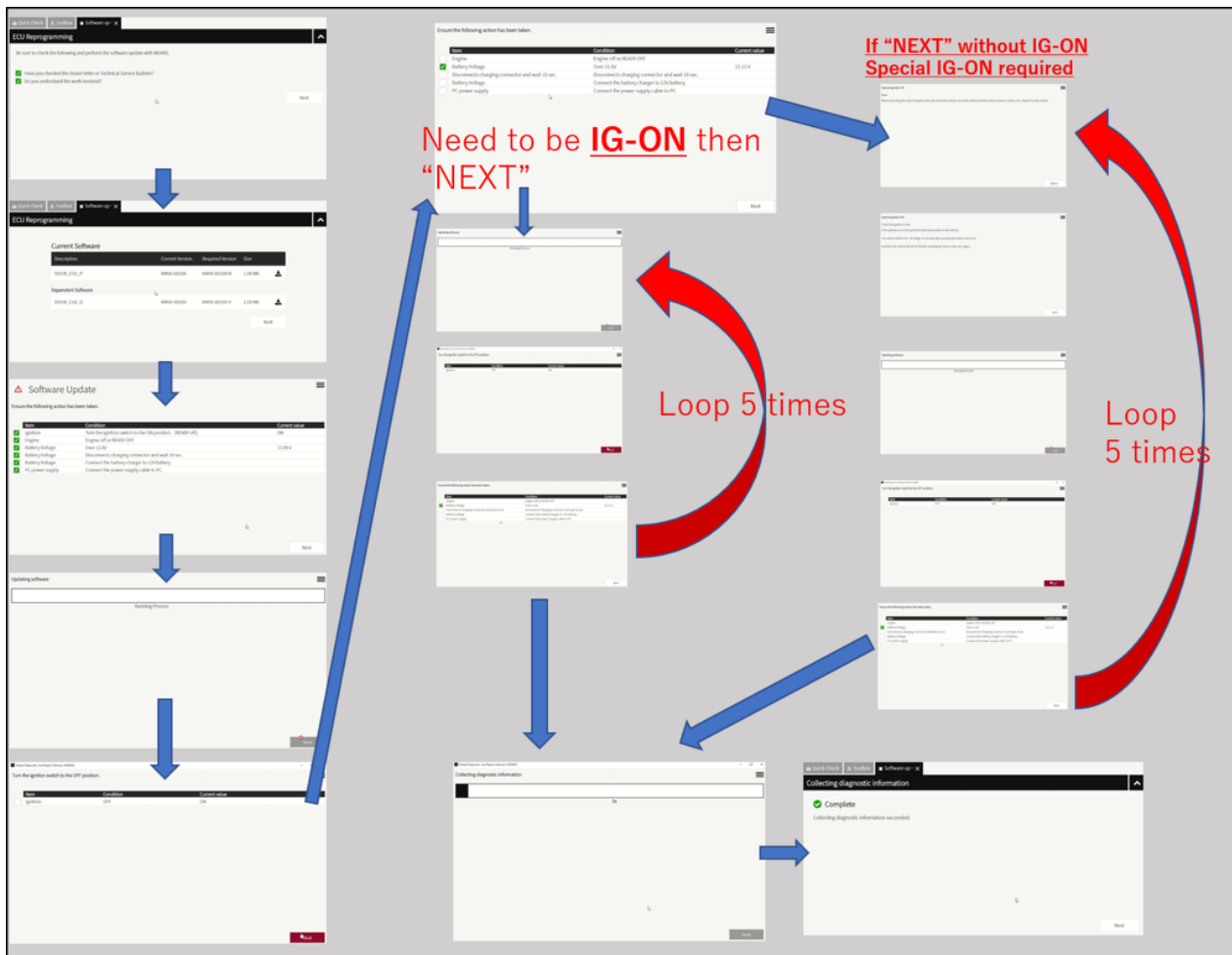
REPAIR PROCEDURE

1. Verify the customer concern.

NOTE: Explain to the customer that, after the repair, the head lights may swivel twice at a stop that did not occur before. This action is like the one that occurs when the ignition is turned ON.

2. Reprogram the **AFS** with the Mazda Modular Diagnostic System (M-MDS), using Mazda Diagnostic And Repair Software (MDARS). Refer to MDARS ECU Reprogramming Procedure.

CAUTION: MDARS reprogramming may require looping IG-ON 5 times.



CONSUMER NOTICE: The information and instructions in this bulletin are intended for use by skilled technicians. Mazda technicians utilize the proper tools/ equipment and take training to correctly and safely maintain Mazda vehicles. These instructions should not be performed by "do-it-yourselfers." Customers should not assume this bulletin applies to their vehicle or that their vehicle will develop the described concern. To determine if the information applies, customers should contact their nearest authorized Mazda dealership. Mazda North American Operations reserves the right to alter the specifications and contents of this bulletin without obligation or advance notice. All rights reserved. No part of this bulletin may be reproduced in any form or by any means, electronic or mechanical---including photocopying and recording and the use of any kind of information storage and retrieval system ---without permission in writing.

NOTE:

- **Be sure to submit Diagnostic Information (ODR) data as it is a required item and will be checked during warranty claim submission. Instructions can be found under M-MDS -> MDARS (Uploading Diagnostic Information (ODR) Data).**
- Reprogramming is not necessary if the current calibration file name in the ECU FILENAME screen is the same as shown in Calibration Files Information, or with a later suffix.

3. Clear any other DTCs.

4. Verify the repair by starting the engine and confirming there is no CHECK ENGINE light ON or abnormal warning lights present.

CALIBRATION

Model	ECU	File Name (Old)	File Name (New)
CX-70/CX-90	AFS	KND2-66S16-B	KND2-66S16-C
MX-5	AFS	NG6S-66S16-B	NG6S-66S16-C

NOTE: This TSB is only applicable for vehicles using the above calibration files

WARRANTY INFORMATION**NOTE:**

- This warranty information applies only to verified customer complaints on vehicles eligible for warranty repair.
- This repair will be covered under Mazda's New Vehicle Limited Warranty term.
- Additional diagnostic time cannot be claimed for this repair.

Warranty Type	A
Symptom Code	6X
Damage Code	9W
Part Number Main Cause	5555-51-02X
Quantity	0
Operation Number / Labor Hours:	XXWSTAFX / 0.3 Hrs.

CONSUMER NOTICE: The information and instructions in this bulletin are intended for use by skilled technicians. Mazda technicians utilize the proper tools/ equipment and take training to correctly and safely maintain Mazda vehicles. These instructions should not be performed by "do-it-yourselfers." Customers should not assume this bulletin applies to their vehicle or that their vehicle will develop the described concern. To determine if the information applies, customers should contact their nearest authorized Mazda dealership. Mazda North American Operations reserves the right to alter the specifications and contents of this bulletin without obligation or advance notice. All rights reserved. No part of this bulletin may be reproduced in any form or by any means, electronic or mechanical--including photocopying and recording and the use of any kind of information storage and retrieval system ---without permission in writing.