

Technical Journal

TITLE:

PS Tailgate Hard to Open

REF NO: TJ 37247.4.0	ISSUING DEPARTMENT: Technical Service	CAR MARKET: United States and Canada	
PARTNER: 3 US 7515 Polestar		ISSUE DATE: 2026-01-15	STATUS DATE: 2026-01-29
FUNC GROUP: 8346	FUNC DESC: Handle for hatch; handle for boot lid	Page 1 of 3	

Rows beginning with * are modified

Note! If using a printed copy of this Technical Journal, first check for the latest online version.

Attachment

File Name	File Size
TJ37247_1.jpg	0.1909 MB
TJ37247_2.jpg	0.1557 MB

DESCRIPTION:

* Updated vehicle type

If the tailgate is hard to open with the switch button from outside, follow advise under Service.

CSC Customer Symptom Codes

Code	Description
WJ	Tailgate/trunk lid/Hard to open

DTC Diagnostic Trouble Codes

Vehicle Type

Type	Eng	Eng Desc	Sales	Body	Gear	Steer	Model Year	Plant	Chassis range	Struc Week Range
814							2025-2026		-	202344-202534

Technical Journal 37247.4.0

SERVICE:

Before replacing any parts, follow the instructions below.

1. Follow VIDA instructions on how to dismantle the tailgate lamp (VCC-527817-1).
2. Check the tailgate switch according to attachment (TJ37247_1.jpg), to see if there is a white cover inside.
3. Check the tailgate switch batch number according to attachment (TJ37247_2.jpg). If the switch is from a batch earlier than 250808 replaced the part.

Warranty claim info:

To get a warranty claim accepted for a job described in this TJ, use the corresponding VST OP number stated in this TJ.

Note that the TJ number must be stated in the repair order text.

Failing Part: 80007394 (Switch, Tailgate)

VST Operation Number

VST Operation Number	Description
98805-2	Reimbursement acc. to TJ

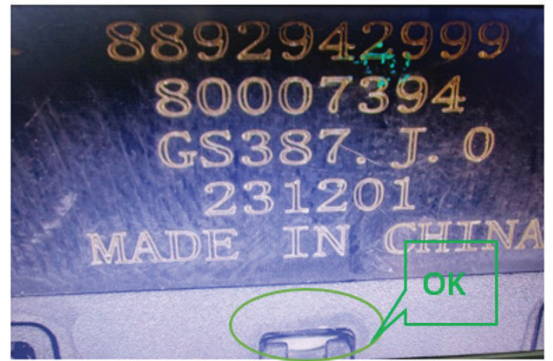
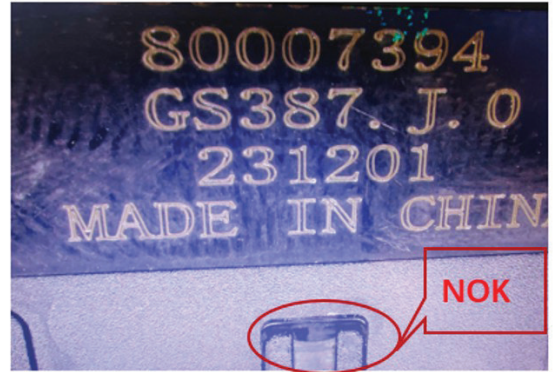
LABOR TIME:

Labor time subject to change without notice.

VEHICLE REPORT:

Yes, please submit a Vehicle Report (with a picture of the Tailgate switch included, see TJ_37247_1.png as reference) if the service solution described in this TJ has no effect. Use concern area "Vehicle Report Polestar" and sub concern area "Support not needed Polestar", use function group 8346.

To view TJ attachment continue to next page. This TJ has two attachments.



TJ37247

