

**TITLE: 2021~2026 Ninja® ZX™-10R & -10RR Technical Advisory
Periodic Engine Oil Maintenance & Service Information**

SERVICE INFORMATION

Subject

As high-performance models, the Ninja ZX-10R/10RR require proper handling and regular maintenance. This Service Information document contains key content from the Owner's Manual and Service Manual, supplemented with additional guidance.

Dealer Action

Dealers are instructed to inform customers about proper periodic maintenance and the importance of regular oil changes.

WARNING

Failure to adhere to the instructions in the Owner Manual may result in engine seizure and the risk of an accident. Perform regular maintenance and adjustments in accordance with the Owner's Manual.

Bulletin Contents

- Break-In
- Engine Oil Flow Chart
- Oil Level Inspection
- Periodic Engine Oil Maintenance
- Engine Oil Change
- Oil Filter Replacement
- Re-starting the Engine After a Fall
- Oil Pressure Warning Indicator Illuminated
- Motorcycle Modifications: Risks & Restrictions
- Warranty Information



Break-In

As noted in the Owner's Manual, the break-in process is essential because it allows the engine's internal sliding components and drivetrain parts to properly bed in. During the early stages of operation, components such as piston rings, cylinder walls, gears, and clutch parts naturally undergo initial surface stabilization, and a controlled break-in helps prevent excessive wear, inadequate lubrication, and potential seizure. It also ensures that the lubrication passages are fully primed with oil, contributing to long-term engine protection. Proper break-in enables the motorcycle to achieve its intended performance, durability, and reliability.

Failure to adhere to these instructions from the Owner Manual **may result in engine seizure and failure.**

At 1,000 km (600 miles), ensure the customer is instructed to obtain the initial maintenance service from an authorized Kawasaki dealer. This service is of paramount importance for continued performance and reliability.

The first 600 miles (1,000 km) of use is the break-in period.

Follow the RPM recommendations below to maintain the vehicle's performance and longevity.

Break-In	
Travelled Distance	Max RPM
0 ~ 250 miles (0 ~ 350 km)	4,000 RPM
250 ~ 400 miles (350 ~ 600 km)	6,000 RPM
400 ~ 600 miles (600 ~ 1,000 km)	Ride Moderately

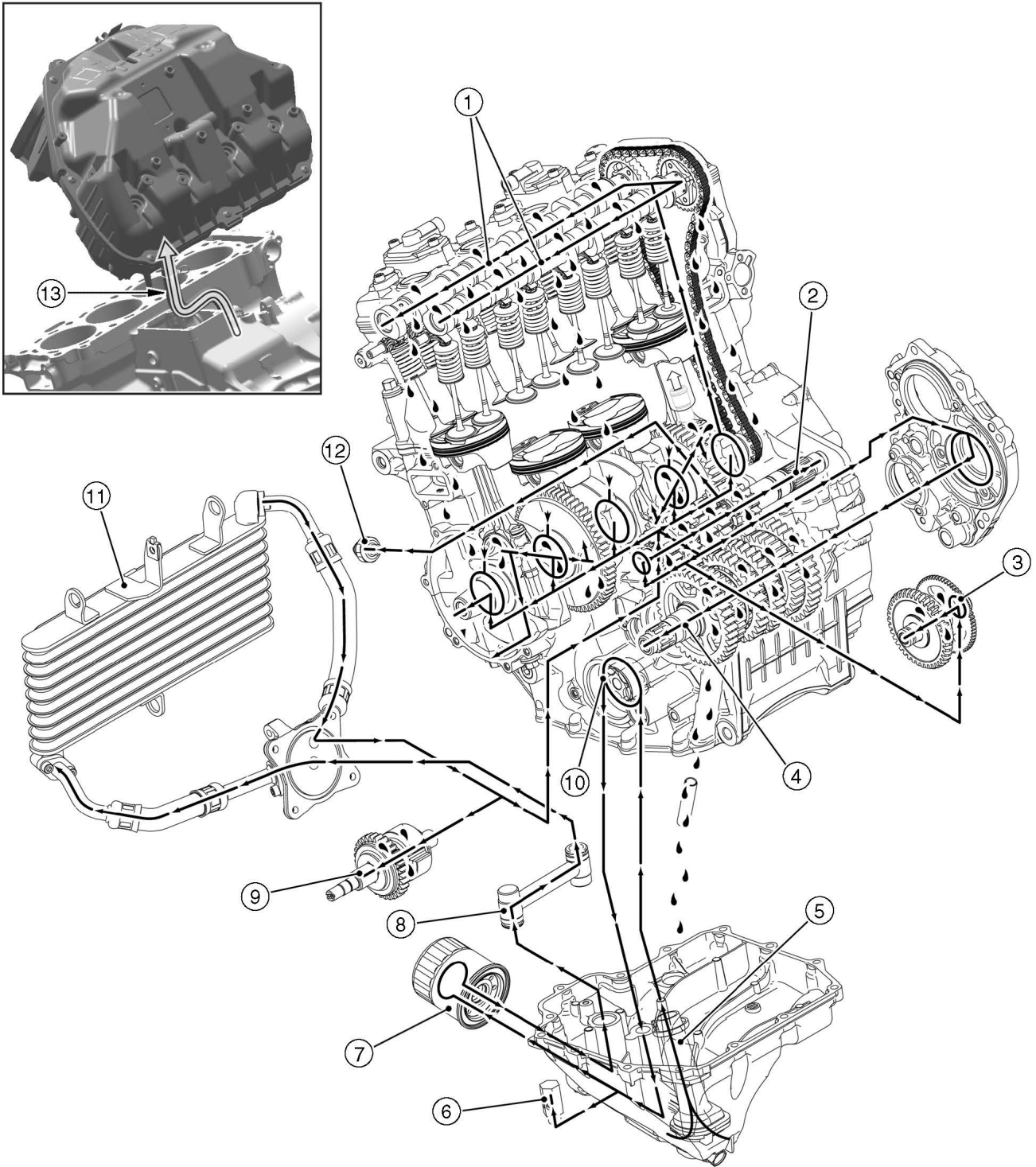
NOTE:

- o *You can ride above the maximum engine revolution stated in the break-in table briefly if necessary. Brief periods above the listed engine revolutions will not affect break-in results.*
- o *When travelling on public roads, obey the speed limits.*
- o *Do not race the engine while the transmission is in neutral.*

WARNING

New tires are slippery and may cause loss of control and injury. A break-in period of 100 miles (160 km) is necessary to establish normal tire traction. During break-in, avoid sudden and maximum braking and acceleration, and hard cornering.

Engine Oil Flow Diagram

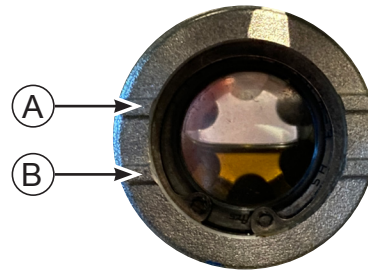


- | | |
|-------------------------------|-------------------------|
| 1. Camshaft Oil Passages | 8. Oil Pipe |
| 2. Drive Shaft Oil Passage | 9. Balancer Oil Passage |
| 3. Starter Clutch Oil Passage | 10. Oil Pump |
| 4. Output Shaft Oil Passage | 11. Oil Cooler |
| 5. Oil Screen | 12. Oil Pressure Switch |
| 6. Oil Pressure Relief Valve | 13. Blowby Gas |
| 7. Oil Filter | |

Oil Level Inspection

Check that the engine oil level is between the upper [A] and lower [B] levels in the oil level inspection window.

Failure to adhere to these instructions from the Owner Manual may result in engine seizure and failure.



NOTE:

- o Situate the motorcycle so that it is perpendicular to the ground.
- o If the motorcycle has just been used, wait several minutes for all the oil to drain down.
- o If the oil has just been changed, start the engine and run it for several minutes at idle speed. This fills the oil filter with oil. Stop the engine, then wait several minutes until the oil settles.

NOTICE

Racing the engine before the oil reaches every part can cause engine seizure.

If the engine oil gets extremely low or if the oil pump or oil passages clog up or otherwise do not function properly, the warning indicator light and oil pressure warning indicator will light. If this light stays on when the engine is running above idle speed, stop the engine immediately and find the cause.

- ★ If the oil level is too high, remove the excess oil, using a syringe or some other suitable device.
- ★ If the oil level is too low, add the correct amount of oil through the oil filler opening. Use the same type and make of oil that is already in the engine.

Periodic Engine Oil Maintenance

The scheduled maintenance must be done in accordance with this chart to keep the motorcycle in good running condition. The initial maintenance is vitally important and must not be neglected.

Failure to adhere to these instructions from the Owner Manual **may result in engine seizure and failure.**

Periodic Inspection

- *A. Service at number of years shown or indicated odometer reading intervals, whichever comes first.
- *B. For higher odometer readings, repeat at the frequency interval established here.
- *C. Service more frequently when operating in severe conditions: dusty, wet, muddy, high speed, or frequent starting/stopping.

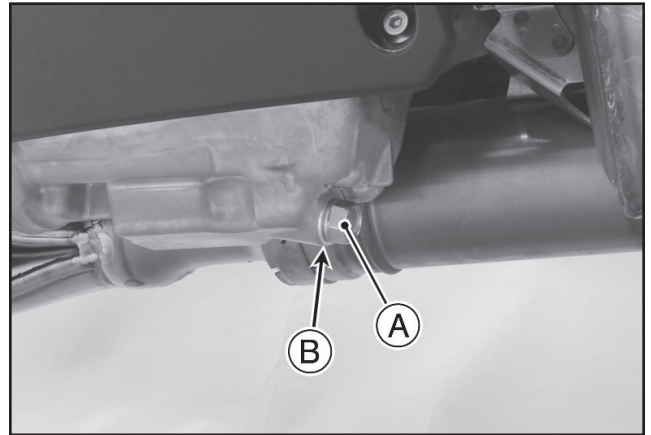
↻: Change or Replace	year (*A)	Odometer Reading (*B) × 1 000 km (× 1 000 mile)				
		1 (0.6)	12 (7.6)	24 (15.2)	36 (22.8)	48 (30.4)
Items						
Engine Lubrication System						
Engine oil (*C) and oil filter	↻:1	↻	↻	↻	↻	↻

NOTE:

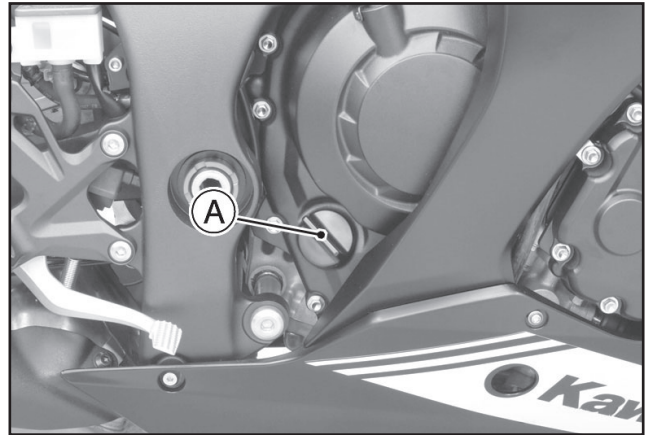
- o Daily maintenance items should also be checked at every scheduled dealer service.

Engine Oil Change

- Situate the motorcycle so that it is vertical after warming up the engine.
- Remove the engine oil drain bolt [A] to drain the oil.
 - The oil in the oil filter can be drained by removing the filter.
- Replace the drain bolt gasket [B] with a new one.
- Tighten the drain bolt.
- Torque - Engine Oil Drain Bolt: 21 ft·lb (3.0 kgf·m, 29 N·m)



- Remove the oil filler plug [A].



- Pour in the specified type and amount of oil.

Recommended Engine Oil

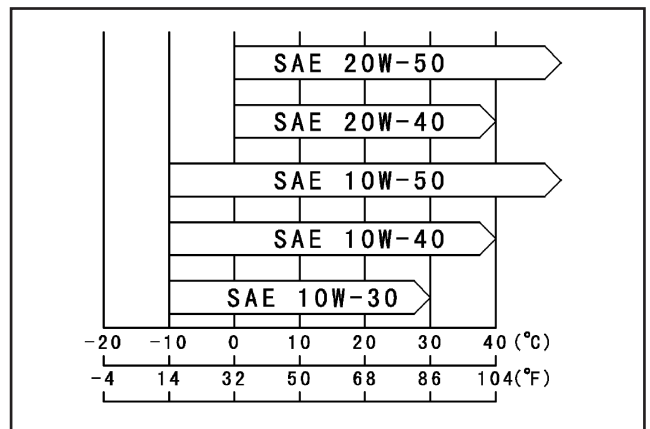
Type: API SG, SH, SJ, SL or SM
with JASO MA, MA1 or MA2

Viscosity: SAE 10W-40

Capacity: 2.9 L (3.1 US qt) (When
filter is not removed.)

3.4 L (3.6 US qt) (When
filter is removed.)

4.0 L (4.2 US qt) (When
engine is completely
dry.)



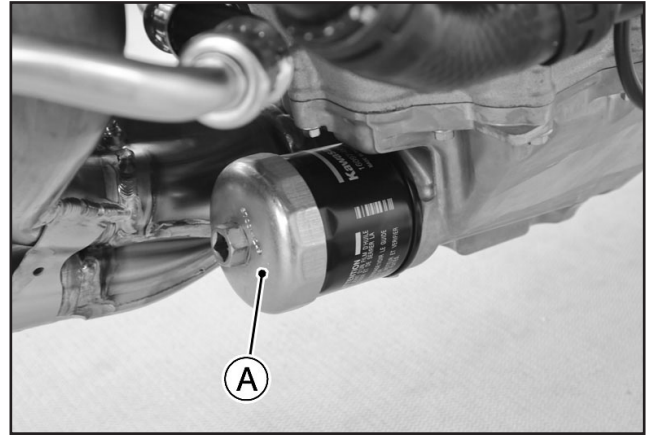
NOTE:

- Do not add any chemical additive to the oil. Oils fulfilling the above requirements are fully formulated and provide adequate lubrication for both the engine and the clutch.
- Although 10W-40 engine oil is the recommended oil for most conditions, the oil viscosity may need to be changed to accommodate atmospheric conditions in your riding area.

- Replace the O-ring of the oil filler plug with a new one.
- Apply grease to the new O-ring.
- Install the oil filler plug.
- Check the oil level.

Oil Filter Replacement

- Remove left lower fairing (see Lower Fairing Removal of the Service Manual).
- Drain engine oil.
- Remove oil filter with oil filter wrench [A].
Special Tool - Oil Filter Wrench:
57001-1249
- Replace filter with a new one.
- Apply grease to gasket [A] before installation.
- Tighten filter the oil filter wrench.
Special Tool - Oil Filter Wrench:
57001-1249
Torque - Oil Filter:
13 ft·lb (1.7 kgf·m, 17 N·m)



NOTE:

- *DO NOT HAND TIGHTEN THE OIL FILTER. Use a torque wrench to tighten the oil filter to the proper torque.*
- Pour in the specified type and capacity of oil.

NOTE:

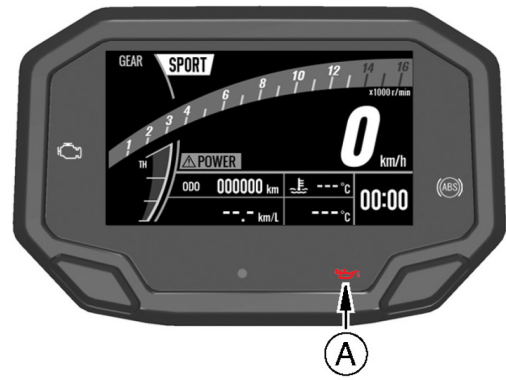
- *If the oil pressure warning indication is illuminated after an oil change, air may be trapped in the oil line. Slightly loosen the oil filter and allow a small amount of oil to drain from the sealing surface of the filter to help release the trapped air. Tighten filter with a torque wrench*


Precautions for Re-Starting the Engine after a Fall

If the motorcycle tips over, oil may drain from the engine's oil lines, allowing air to enter the system. Operating the engine with air in the oil lines can result in insufficient oil supply to internal components, potentially causing severe engine damage such as seizure. When air is trapped in the oil lines and oil pressure does not build up, the oil warning light on the meter will illuminate. **After restarting the motorcycle following a fall, always confirm that the oil warning light has turned off before riding.**

Oil Pressure Warning Indicator

Oil pressure warning indicator (Red)



Indicators	Status	Actions
	ON	This indicator goes on whenever the oil pressure is dangerously low or the ignition switch is turned on with the engine not running. If this indicator goes on when the engine speed is above idle, stop the engine immediately and check the engine oil level. If the amount of engine oil is insufficient, add engine oil. If the oil level is good, contact an authorized Kawasaki dealer.

Anytime the engine oil is changed, the oil filter is replaced, or the motorcycle has been laid on its side due to a fall, air may become trapped in the oil line.

After starting the engine, confirm that the Oil Pressure Warning Indicator does not go on.

If the indicator goes on, rev the engine slightly (do not exceed 3,000 rpm) to circulate the oil and purge any air from the system (no more than three times) to turn the indicator off.

If the indicator remains on, with the engine idling, loosen the oil filter momentarily to bleed the trapped air.

Failure to adhere to these instructions from the Owner Manual may result in engine seizure and failure.

Risks & Restrictions Regarding Vehicle Modifications

This motorcycle has been precisely engineered to deliver high performance. Major components, including the engine and lubrication system, are designed and optimized according to strict specifications. Any modification or use of non-genuine parts may lead to serious issues such as inadequate lubrication and engine seizure.

Furthermore, alterations to the motorcycle's structure or functions can impair handling and ultimately shorten its service life.

Importantly, modifications may violate local laws or regulations and void the manufacturer's warranty.

To maintain safety and performance, do not modify the motorcycle.

Failure to adhere to these instructions from the Owner Manual may result in engine seizure and failure.

Warranty Information

This is Service Information only, not warranty authorization

2021~2026 Ninja® ZX™-10R & -10RR Technical Advisory

Periodic Engine Oil Maintenance & Service Information

THIS NOTICE APPLIES TO YOUR VEHICLE

VIN: JKBZXJJ1234000000

JOHN SMITH
1234 MAIN STREET
ANYTOWN, CA 99999-9999

ZX1000NMFNL
ENGINE: ZX1000AA12345
FRAME: A000000
DATE: FEBRUARY 2026

Dear Kawasaki Motorcycle Owner:

At Kawasaki, we take pride in producing high quality products and are committed to your continued satisfaction. To ensure a long, trouble-free life for your motorcycle, we are sending a reminder to Ninja ZX-10R and ZX-10RR owners about the importance of following the information provided in your Owner's Manual.

⚠ WARNING

Failure to adhere to the instructions in the Owner Manual may result in engine seizure and the risk of an accident. Make sure that regular maintenance and adjustments in accordance with the Owner's Manual.

As high-performance models, the Ninja ZX-10R/10RR require proper handling and regular maintenance. It is important to keep your motorcycle properly maintained and in safe riding condition. Inspect your motorcycle before every ride and carry out all periodic maintenance. To ensure your motorcycle is serviced using the latest information, it is recommended that an authorized Kawasaki Dealer performs the periodic maintenance as directed in the Owner's Manual.

• **Break-In**

The break-in process is essential because it allows the engine's internal sliding components and drivetrain parts to properly bed in. During the early stages of operation, components such as piston rings, cylinder walls, gears, and clutch parts naturally undergo initial surface stabilization, and a controlled break-in helps prevent excessive wear, inadequate lubrication, and potential seizure. It also ensures that the lubrication passages are fully primed with oil, contributing to long-term engine protection. Proper break-in enables the motorcycle to achieve its intended performance, durability, and reliability.

Failure to adhere to these instructions from the Owner Manual may result in engine seizure and failure.

The first 600 miles (1,000 km) of use is the break-in period.

Follow the RPM recommendations below to maintain the vehicle's performance and longevity.

Break-In	
Travelled Distance	Max RPM
0 ~ 250 miles (0 ~ 350 km)	4,000 RPM
250 ~ 400 miles (350 ~ 600 km)	6,000 RPM
400 ~ 600 miles (600 ~ 1,000 km)	Ride Moderately

NOTE:

- o You can ride above the maximum engine revolution stated in the break-in table briefly if necessary. Brief periods above the listed engine revolutions will not affect break-in results.
- o When travelling on public roads, obey the speed limits.
- o Do not race the engine while the transmission is in neutral.

• **Periodic Engine Oil Maintenance**

The scheduled maintenance must be done in accordance with the Periodic Maintenance chart in the Owner's Manual to keep the motorcycle in good running condition. The initial maintenance is vitally important and must not be neglected.

Failure to adhere to these instructions from the Owner Manual **may result in engine seizure and failure.**

Periodic Inspection

- *A. Service at number of years shown or indicated odometer reading intervals, whichever comes first.
- *B. For higher odometer readings, repeat at the frequency interval established here.
- *C. Service more frequently when operating in severe conditions: dusty, wet, muddy, high speed, or frequent starting/stopping.

🔄: Change or Replace	year (*A)	Odometer Reading (*B) × 1 000 km (× 1 000 mile)				
		1 (0.6)	12 (7.6)	24 (15.2)	36 (22.8)	48 (30.4)
Engine Lubrication System						
Engine oil (*C) and oil filter	🔄:1	🔄	🔄	🔄	🔄	🔄

NOTE:

- o Daily maintenance items should also be checked at every scheduled dealer service.

- **Engine Oil Change**

It is recommended that an authorized Kawasaki Dealer performs the oil change and oil filter change.

If you plan to perform your own oil and filter change yourself, the Kawasaki Service Manual contains detailed disassembly and maintenance information.


NOTE:

- *If the oil pressure warning indication is illuminated after an oil change, air may be trapped in the oil line. Slightly loosen the oil filter and allow a small amount of oil to drain from the sealing surface of the filter to help release the trapped air. Tighten filter with a torque wrench.*

- **Precautions for Re-starting the Engine After a Fall**

If the motorcycle tips over, oil may drain from the engine's oil lines, allowing air to enter the system. Operating the engine with air in the oil lines can result in insufficient oil supply to internal components, **potentially causing severe engine damage such as seizure.** When air is trapped in the oil lines and oil pressure does not build up, the oil warning light [A] on the meter will illuminate. After restarting the motorcycle following a fall, always confirm that the oil warning light [A] has turned off before riding.

- **Oil Pressure Warning Indicator**

Indicators	Status	Actions
	ON	This indicator goes on whenever the oil pressure is dangerously low or the ignition switch is turned on with the engine not running. If this indicator goes on when the engine speed is above idle, stop the engine immediately and check the engine oil level. If the amount of engine oil is insufficient, add engine oil. If the oil level is good, contact an authorized Kawasaki dealer.



Anytime the engine oil is changed, the oil filter is replaced, or the motorcycle has been laid on its side due to a fall, air may become trapped in the oil line. After starting the engine, confirm that the Oil Pressure Warning Indicator [A] does not go on.

If the indicator goes on, rev the engine slightly (do not exceed 3,000 rpm) to circulate the oil and purge any air from the system (no more than three times) to turn the indicator off.

If the indicator remains on, contact an authorized Kawasaki dealer.

Failure to adhere to these instructions from the Owner Manual may result in engine seizure and failure.

- **Risks & Restrictions Regarding Vehicle Modifications**

This motorcycle has been precisely engineered to deliver high performance. Major components, including the engine and lubrication system, are designed and optimized according to strict specifications. **Any modification or use of non-genuine parts may lead to serious issues such as inadequate lubrication and engine seizure.**

Furthermore, alterations to the motorcycle's structure or functions can impair handling and ultimately shorten its service life. Importantly, modifications may violate local laws or regulations and void the manufacturer's warranty.

To maintain safety and performance, do not modify the motorcycle.

Failure to adhere to these instructions from the Owner Manual may result in engine seizure and failure.

If you need help:

If you have questions or concerns that your dealer is not able to resolve, please contact Kawasaki Customer Care at (855) 878-4217 (toll-free) between 7:00 a.m. and 4:00 p.m. PT Monday through Friday. Please have your Vehicle Identification Number ready when calling.

If you received this notice in error:

Our records indicate you are the current owner of the Side x Side described in this letter. If you no longer have the vehicle described in this letter, please help us to update our records at www.kawasaki.com by clicking on "OWNER CENTER => OWNER SUPPORT => UPDATE OWNER INFO" or by calling Kawasaki toll free at (855) 878-4217.

We have sent this notification in the interest of your continued satisfaction with your Kawasaki motorcycle.

Sincerely,

Kawasaki Motors Corp., U.S.A.