



GROUP	MODEL
Voluntary Emissions Service Campaign	2020-2025MY Telluride (ON)
NUMBER	DATE
SC357	February 2026

VOLUNTARY EMISSIONS SERVICE CAMPAIGN

SUBJECT:

ECU EMISSIONS SOFTWARE LOGIC IMPROVEMENT (SC357)

This bulletin provides information to upgrade the Engine Control Unit (ECU) system software to improve the emissions-related logic on 2020-2025MY Telluride (ON) vehicles equipped with the Lambda II 3.8L GDI engine, produced from January 9, 2019 through October 27, 2025. The subject vehicles may have engine calibrations that were not optimized for emissions standards under certain specific conditions, which may cause the vehicle to release air pollutants which exceed Federal and California standards. Follow the procedure outlined in this publication to upgrade the ECU software on the applicable vehicle. Before conducting the procedure, verify that the vehicle is included in the list of affected VINs. Refer to [SST081](#) for software upgrade instructions using Kia Diagnostic System (KDS) tablet and VCI-II and confirm the Upgrade Event Number/Name, ROM ID Information, and Manual Mode passwords (if applicable) on the applicable vehicle.



NOTICE

Repair status for a VIN is provided on KDealer+ (Service → Warranty Coverage → Warranty Coverage Inquiry → Campaign Information). Not completed Recall / Service Action reports are available on KDealer+ (Consumer Affairs → Not Completed Recall → Recall VIN → Select Report), which includes a list of affected vehicles.

Refer to [TSB SST081](#) for instructions to upgrade the 'PDC' system:

To correct this condition, the specified system module should be reprogrammed using KDS as described in this bulletin in 'Auto Mode'.

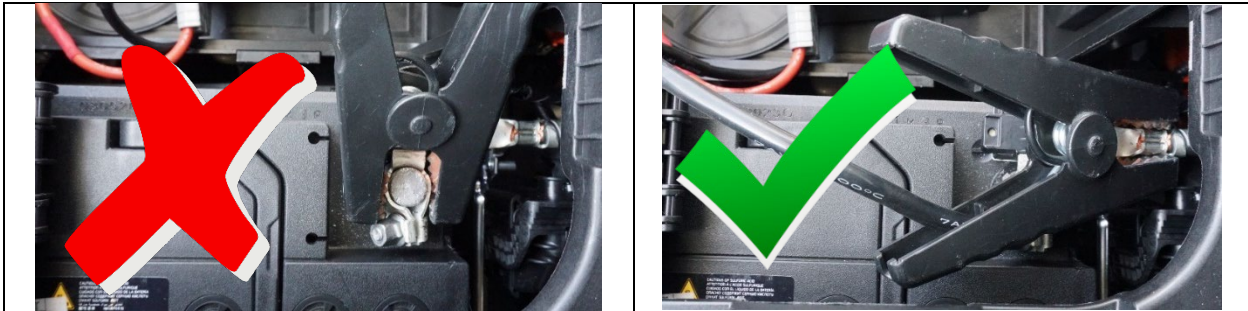
Upgrade Event Name

894.ON/ON PE Lambda 3.8 Emission Logic Improvement


NOTICE

- Confirm a fully charged battery (12.3 volts or higher is necessary) is used or utilize a fully charged jump starter box connected to the battery.
- **Ensure the KDS GDS is sufficiently charged at 60% or higher prior to reflash.**
- All ECU upgrades must be performed with the ignition set to the 'ON' position unless otherwise stated.
- **Damaged VCI II units should not be used and promptly replaced.**
- Be careful not to disconnect the VCI-II connected to the vehicle during the ECU upgrade procedure.
- **DO NOT start the engine during ECU upgrade.**
- DO NOT turn the ignition key 'OFF' or interrupt the power supply during ECU upgrade.
- **When the ECU upgrade is completed, turn the ignition 'OFF' and wait 10 seconds before starting the engine.**
- ONLY use approved ECU upgrade software designated for the correct application.

[Connect the negative \(-\) terminal to the battery as shown below.](#)




NOTICE

Before attempting an ECU upgrade on any Kia model, make sure to first determine whether the applicable model is equipped with an immobilizer  security system. Failure to follow proper procedures may cause the PCM to become inoperative after the upgrade and any claims associated with this repair may be subject to chargeback.

SUBJECT:

ECU EMISSIONS SOFTWARE LOGIC IMPROVEMENT (SC357)**ROM ID Information Table:****Upgrade Event #894****ⓘ IMPORTANT**


It is recommended to **ALWAYS** check the Electronic Parts Catalog (EPC) to locate the ECU Part Number respective to Auto/Manual Mode ROM IDs. **DO NOT** reference the parts label affixed to the ECU.

Model	System	IMMO 	ECU P/No.	ROM ID	
				Previous	New
ON 20MY	ECU	Yes	39122 3LNN0	ONLN8GMS_J0A ONLN8GMS_J0B ONLN8GMS_J0C ONLN8GMS_K0A ONLN8GMS_K0B	ONLN8GMS_K3A
		No	39132 3LNN0	ONLN8GSS_J0A ONLN8GSS_J0B ONLN8GSS_J0C ONLN8GSS_K0A ONLN8GSS_K0B	ONLN8GSS_K3A
ON 21MY	ECU	Yes	39122 3LNN1	ONMN8GMS_K0A ONMN8GMS_K0B ONMN8GMS_K0C ONMN8GMS_K0D ONMN8GMS_K0E ONMN8GMS_N2A	ONMN8GMS_N3A
		No	39132 3LNN1	ONMN8GSS_K0A ONMN8GSS_K0B ONMN8GSS_K0C ONMN8GSS_K0D ONMN8GSS_K0E ONMN8GSS_N2A	ONMN8GSS_N3A
ON 22MY	ECU	Yes	39122 3LNN2	ONNN8GMS_S1A ONNN8GMS_S1B	ONNN8GMS_S3A
		No	39132 3LNN2	ONNN8GSS_S1A ONNN8GSS_S1B	ONNN8GSS_S3A

Continued on page 4.

SUBJECT:

ECU EMISSIONS SOFTWARE LOGIC IMPROVEMENT (SC357)

Model	System	IMMO 	ECU P/No.	ROM ID	
				Previous	New
ON 23MY	ECU	Yes	39102 3LNN5	OPPNEM__UOA OPPNEM__UOB OPPNEM__UOC	OPPNEM__U1A
		No	39102 3LNN6	OPPNES__UOA OPPNES__UOB OPPNES__UOC	OPPNES__U1A
ON 24MY	ECU	Yes	39102 3LNN7	OPQNEM__UOD OPQNEM__UOE	OPQNEM__U1A
		No	39102 3LNN8	OPQNES__UOD OPQNES__UOE	OPQNES__U1A
ON 25MY	ECU	Yes	39102 3LNN3	OPRNEM__UOA OPRNEM__UOB	OPRNEM__U1A
		No	39102 3LNN4	OPRNES__UOA OPRNES__UOB	OPRNES__U1A

To verify the vehicle is affected, be sure to check the Calibration Identification of the vehicle's ECM ROM ID and reference the Information Table as necessary.



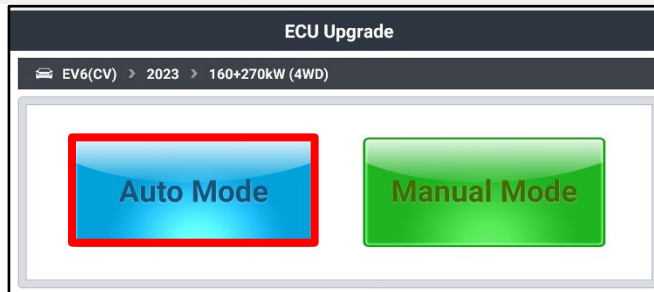
SUBJECT:

ECU EMISSIONS SOFTWARE LOGIC IMPROVEMENT (SC357)

Software Information:

The required software must be installed by selecting the **'Auto Mode'** ECU Upgrade option.

Note: In some case, the 'Manual Mode' installation option may be required **ONLY** if the 'Auto Mode' function fails or is otherwise noted above.



NOTICE

If the automatic upgrade fails, turn the ignition 'OFF' for about 10 seconds then place it back in the 'ON' position to reset the control unit BEFORE performing the manual upgrade.

'Manual Mode' passwords.

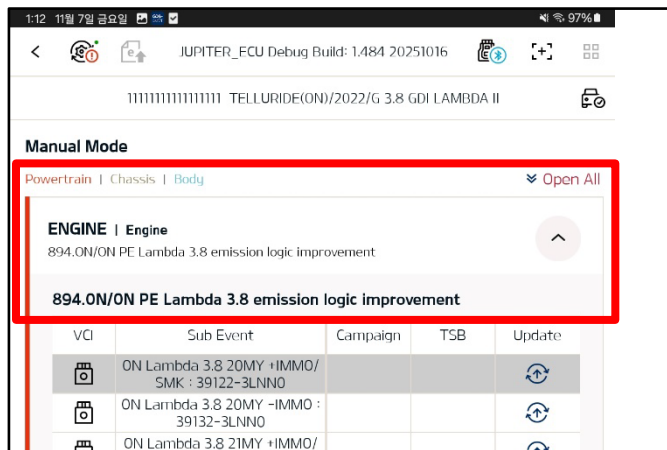
Menu	Password
ON Lambda 3.8 20MY +IMMO/SMK : 39122-3LNN0	2230
ON Lambda 3.8 20MY -IMMO : 39132-3LNN0	5215
ON Lambda 3.8 21MY +IMMO/SMK : 39122-3LNN1	4522
ON Lambda 3.8 21MY -IMMO : 39132-3LNN1	0388
ON Lambda 3.8 22MY +IMMO/SMK : 39122-3LNN2	2919
ON Lambda 3.8 22MY -IMMO : 39132-3LNN2	3232
ON PE Lambda 3.8 23MY +IMMO/SMK : 39102-3LNN5	5388
ON PE Lambda 3.8 23MY -IMMO : 39102-3LNN6	9977
ON PE Lambda 3.8 24MY +IMMO/SMK : 39102-3LNN7	2799
ON PE Lambda 3.8 24MY -IMMO : 39102-3LNN8	8676
ON PE Lambda 3.8 25MY +IMMO/SMK : 39102-3LNN3	9652
ON PE Lambda 3.8 25MY -IMMO : 39102-3LNN4	4429

UPGRADE EVENT:

Select the applicable **'ECU' system** module and the Event Group.

- **894.ON/ON PE Lambda 3.8 Emission Logic Improvement**

Verify the affected vehicle Calibration Identification of the applicable ECU ROM ID and reference the Information Table on page 3 as necessary.



SUBJECT: ECU EMISSIONS SOFTWARE LOGIC IMPROVEMENT (SC357)

ATTENTION: THE PROOF OF CORRECTION CARD AND CAMPAIGN COMPLETION LABEL ARE RESTRICTED ONLY TO DEALERS IN THE FOLLOWING STATES:

California, Connecticut, Delaware, Massachusetts, Maine, Maryland, New Jersey, New York, Oregon, Pennsylvania, Rhode Island, Vermont, and Washington. See Parts Information below to order the Proof of Correction Card and Campaign Completion Label from the PDC.

VEHICLE EMISSION RECALL - PROOF OF CORRECTION CARD

A Vehicle Emission Recall - Proof of Correction card must be filled out for all vehicles registered in California, Connecticut, Delaware, Massachusetts, Maine, Maryland, New Jersey, New York, Oregon, Pennsylvania, Rhode Island, Vermont, and Washington. Residents of these states, who own an affected vehicle, will be required to possess a Vehicle Emission Recall - Proof of Correction card as evidence of voluntary service campaign completion, when they apply for vehicle registration renewal.

WHAT TO DO WITH THE CARD:

The Vehicle Emission Recall - Proof of Correction card must be completed by the Dealership's Service Manager using a permanent ink pen. A fine point pen is recommended. When filling in the information, copy the information directly from the vehicle, not the repair order. **ALL INFORMATION MUST BE PRINTED AND NEAT.**

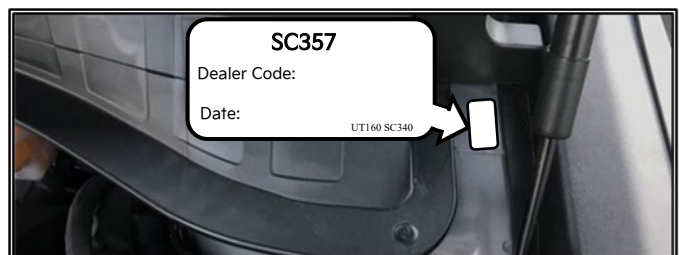
NOTE: DO NOT COMPLETE THE CARD UNLESS THE SERVICE CAMPAIGN WORK IS COMPLETED.

The copy of the card shown below indicates the areas to be filled in. Each area must be filled in. The completed card should be given to the owner of the vehicle upon completion of the Campaign and placement of the Campaign Completion Label outlined below...

FILLING OUT AND APPLYING THE CAMPAIGN COMPLETION LABEL (CA and S.177 STATES ONLY):

The dealer must fill in the Dealer Code and Date information fields on the Campaign Completion Label. Once complete, affix the campaign completion label under the hood of the vehicle, as shown below.

CA and S.177 States Only: Apply SC357 Campaign Completion Label onto the body in the area next to the shock tower, as shown.



NOTE: Be sure to clean the mounting surface to ensure proper label adhesion.




SUBJECT:


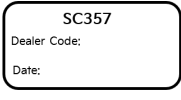
ECU EMISSIONS SOFTWARE LOGIC IMPROVEMENT (SC357)**AFFECTED VEHICLE RANGE:**

Model	Production Date Range
Telluride (ON)	January 8, 2019 to October 27, 2025

REQUIRED TOOL:

Tool Name	Part Number	Figure	Comments
Kia Diagnostic System (KDS)	N/A		KDS + VCI

REQUIRED PART:

Part Name	Part Number	Figure	Qty.	Comments
Vehicle Emissions Recall Proof of Correction Card	UT161 SC357		1	N/A
Campaign Completion Label	UT160 SC357		1	N/A

WARRANTY INFORMATION:**N Code: N99 C Code: C99**

Claim Type	Causal P/N	Qty.	Repair Description	Labor Op Code	Op Time	Replacement P/N	Qty.
R	39122 3LNNO	0	(SC357) ECU Software Logic Improvement	250A63R0	0.3 M/H	N/A	0

Note: Refer to [Warranty Bulletin 2026-09](#) for claim submission procedures. For Substitute Transportation policy, please refer to [Service Policy and Procedures Manual \(SPPM\) 6.11 "Kia Substitute Transportation"](#).

NOTICE

VIN inquiry data for this repair is provided for tracking purposes only. Kia retailers should reference SC357 when accessing the KDealer+ system.

