

<b>REFERENCE:</b>	<b>TSB:</b> 08-058-26 <b>GROUP:</b> 08 - Electrical	<b>Date:</b>	February 11, 2026	<b>REVISION:</b>	08-407-25
<b>VEHICLES AFFECTED:</b>	2023 (WL) Jeep Grand Cherokee / Grand Cherokee L			<b>MARKET APPLICABILITY:</b> <input type="checkbox"/> NA <input type="checkbox"/> MEA <input type="checkbox"/> SA <input type="checkbox"/> IAP <input type="checkbox"/> EE <input checked="" type="checkbox"/> CH <b>NOTE:</b> This bulletin applies to China markets.	
<b>CUSTOMER SYMPTOM:</b>	<b>Customers may experience the following:</b> <ul style="list-style-type: none"> <li>Vehicle no start due to a depleted 12V battery.</li> </ul>				
<b>CAUSE:</b>	Loose PDC connector pin				

This bulletin supersedes Technical Service Bulletin (TSB) 08-407-25, date of issue December 18, 2025, which should be removed from your files. All revisions are highlighted with **\*\*asterisks\*\*** and include converting from an RSU to a TSB and an updated Repair Procedure figure.

This Technical Service Bulletin (TSB) has also been released as a Rapid Service Update (RSU) 25-250, date of issue December 18, 2025. All applicable RSU VINs have been loaded. To verify this RSU service action is applicable to the vehicle, use VIP or perform a VIN search in DealerCONNECT/Service Library. All repairs are reimbursable within the provisions of warranty.

**REPAIR SUMMARY:**

This bulletin involves inspecting the PDC C3 connector for improperly installed pins and correcting the connector pins if found to be installed backwards.

**CLAIMS DATA:**

Labor Operation No:	Labor Description	Skill Category	Labor Time
08-08-30-A2	Center, Power Distribution Center (PDC) - Inspect and Adjust Pin (1 - Semi-Skilled)	6 - Electrical and Body Systems	0.7 Hrs.
Failure Code	<b>**ZZ**</b>	Service Action	

**DIAGNOSIS:**

Using a Scan Tool (wiTECH) with the appropriate Diagnostic Procedures available in DealerCONNECT/Service Library, verify all related systems are functioning as designed. If DTCs or symptom conditions, other than the ones listed above are present, record the issues on the repair order and repair as necessary before proceeding further with this bulletin.

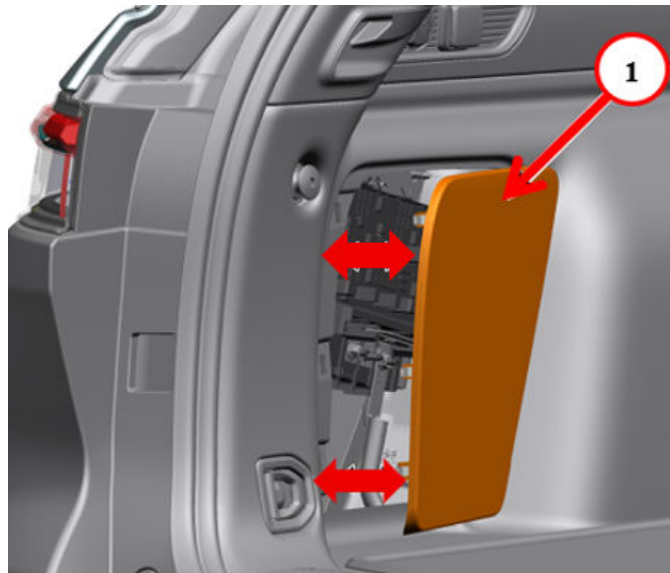
**\*\*If the customer describes any of the symptoms listed above in the customer symptom section, perform the Repair Procedure.\*\***

**SPECIAL TOOLS/EQUIPMENT:**

Description	Ref. No.	Notes
Trim Stick	C-4829A	Essential Tool
wiTECH or Equivalent	–	–

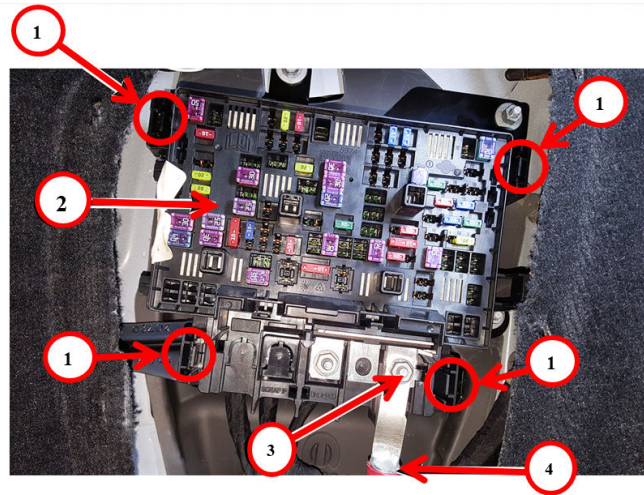
**REPAIR PROCEDURE:**

1. Disconnect the negative battery cable. Refer to the detailed service procedures available in DealerCONNECT/Service Library under: Service Info> 08 - Electrical / 8F - Engine Systems / Battery System / Standard Procedure.
2. Using a trim stick or equivalent, remove the left quarter trim panel access cover [Fig. 1](#).



**Fig. 1**  
Access Cover

3. Remove the electrical terminal nut and positive cable from the PDC [Fig. 2](#).

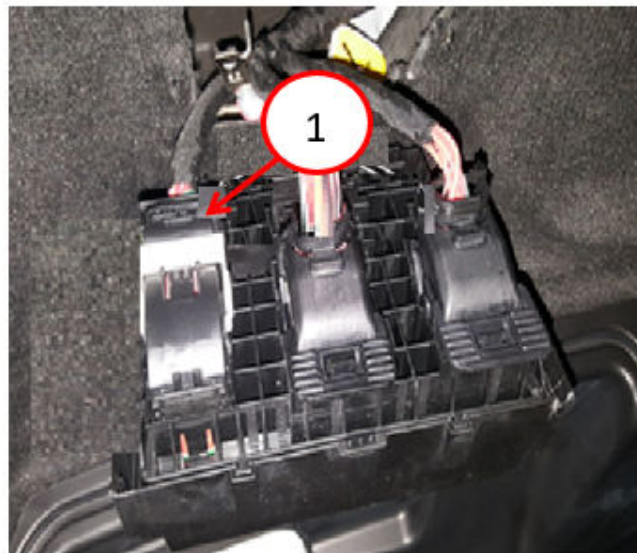


**Fig. 2**  
PDC

- 1 - PDC retaining Tabs
- 2 - PDC
- 3 - Electrical Terminal Nut
- 4 - Positive Cable

4. Release the retaining tabs securing the PDC to the PDC bracket [Fig. 2](#).
5. Pull the PDC out from the PDC bracket and disconnect the C3 wire harness connector [Fig. 3](#).

\*\*

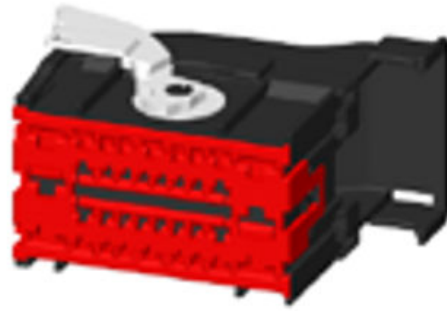


\*\*

**Fig. 3**  
PDC C3 Connector

- 1 - Disconnect C3 Connector

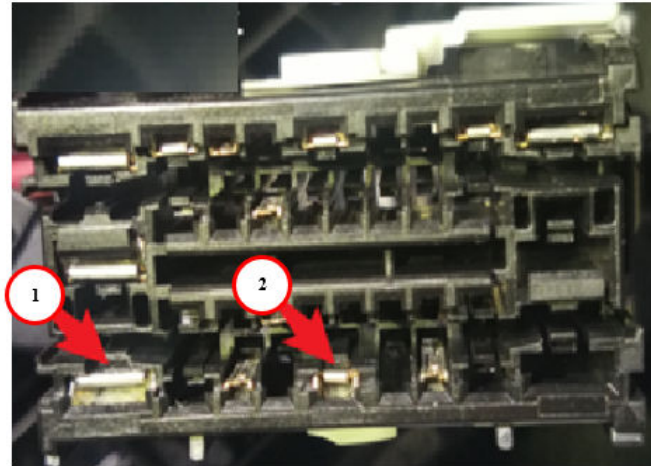
6. Remove the red connector terminal cap from the surface of the C3 connector [Fig. 4](#).



**Fig. 4**

C3 Red Connector Terminal Cap

7. Remove the medium and large pins from the connector [Fig. 5](#).

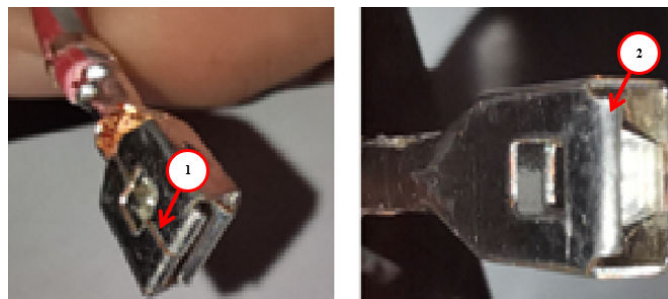


**Fig. 5**

Remove Pins

- 1 - Large Pin  
2 - Medium Pin

8. Inspect the large and medium pins for a visible seam or a rolled edge [Fig. 6](#).



**Fig. 6**

Pin Inspection

- 1 - Seam Visible - Indicates Incorrect Alignment  
2 - Rolled Edge - Indicates Correct Alignment

9. Was a seam noticed when inspect the large and medium pins [Fig. 6](#)?
  - YES>>> Proceed to [Step 10](#).
  - NO>>> Proceed to [Step 11](#).
10. If you can see a seam between the large and medium pins on this connector, it means that the pin installation is incorrect. The pins need to be rotated 180 degrees prior to installing them back to the connector.
11. For the smallest pin, gently pull the wire from the backside of the connector to check if it's loose. Secure as needed.
12. Correctly align and install the large and medium pins back to the connector.
13. Install the red connector terminal cap to the C3 connector [Fig. 4](#).
14. Connect the C3 wire harness connector to the PDC [Fig. 3](#).
15. Position the PDC back into the PDC bracket.
16. Engage the retaining tabs securing the PDC to the PDC bracket [Fig. 2](#).
17. Connect the positive terminal to the PDC and secure using an electrical terminal nut [Fig. 2](#).
18. Install the left quarter trim panel access cover [Fig. 1](#).
19. Connect the negative battery cable. Refer to the detailed service procedures available in DealerCONNECT/Service Library under: Service Info> 08 - Electrical / 8F - Engine Systems / Battery System / Standard Procedure.
20. Clear all DTC's before returning vehicle to customer.

#### **POLICY:**

Reimbursable within the provisions of the warranty.

*This bulletin is supplied as technical information only and is not an authorization for repair. No part of this publication may be reproduced, stored in a retrieval system, or transmitted, in any form or by any means, electronic, mechanical, photocopying, or otherwise, without written permission of FCA US LLC.*