

GENERAL MOTORS  
DCS7433  
URGENT - DISTRIBUTE IMMEDIATELY

Date: February 11, 2026

Subject: REVISION: N252521591-03 – Service Update  
Unwanted Integrated Brake Assist  
Revised Warranty Table and Correction Statement

Models: 2026 Cadillac Escalade ESV  
2026 Cadillac Escalade  
2026 Cadillac ESCALADE IQ  
2026 Cadillac ESCALADE IQL  
2026 Cadillac CT5  
2026 Cadillac VISTIQ  
2026 Chevrolet Equinox EV  
2026 Chevrolet Suburban  
2026 Chevrolet Tahoe  
2026 Chevrolet Silverado EV  
2026 GMC Sierra EV  
2026 GMC Yukon  
2026 GMC Yukon XL

This bulletin is being revised to update the labor time in the warranty table and the correction statement. Please discard all previous copies of bulletin N252521591.

For dealers with involved vehicles, a listing has been prepared and will be available through GM Global Connect Maxis Field Action Reports or GWM Field Action Batch Search Report. The Inventory tab of the dealer reports will contain VINs that apply to this field action. This information is intended to assist dealers with the **PROMPT COMPLETION** of these vehicles. The Customer In-Service tab will contain customer names and addresses from Motor Vehicle Registration Records. The use of such motor vehicle registration data for any purpose other than follow-up necessary to complete this field action may be a violation of law in several states.

END OF MESSAGE

# Service Update

## N252521591 Unwanted Integrated Brake Assist



**Release Date:** February 2026

**Revision:** 03

**Revision Description:** This bulletin is being revised to update the labor time in the warranty table and the correction statement. Please discard all previous copies of bulletin N252521591.

**Attention:** This service update includes vehicles in dealer inventory and customer vehicles that return to the dealership for any reason. This bulletin will expire November 30, 2027.

For EV Involved Vehicles: The repairs outlined in this bulletin must only be completed at an authorized EV dealer and repairs must be performed by a technician who has successfully completed the applicable technical training required to perform this repair.

**Investigate Vehicle History (IVH) in the GM Global Warranty Management system MUST always be checked to confirm vehicle involvement and MUST be in OPEN status prior to beginning any required inspections and/or repairs. DO NOT use Service Information with VIN search, as it will not verify the VIN eligibility for field actions.**

**This is a phased launch.**

Make	Model	Model Year	
		From	To
Cadillac	Escalade ESV	2026	2026
Cadillac	Escalade		
Cadillac	Escalade IQ		
Cadillac	Escalade IQL		
Cadillac	CT5		
Cadillac	VISTIQ		
Chevrolet	Equinox EV		
Chevrolet	Suburban		
Chevrolet	Tahoe		
Chevrolet	Silverado EV		
GMC	Sierra EV		
GMC	Yukon		
GMC	Yukon XL		

Investigate Vehicle History (IVH) in the GM Global Warranty Management system MUST always be checked to confirm vehicle involvement and MUST be in OPEN status prior to beginning any required inspections and/or repairs. DO NOT use Service Information with VIN search, as it will not verify the VIN eligibility for field actions.

<b>Condition</b>	Certain vehicles listed above may have a condition in which hard braking may unexpectedly engage.
<b>Correction</b>	Dealers will re-program the IPM or Front View Camera depending on what the vehicle is equipped with.

### Parts

No parts are required for this repair.

### Warranty Information

Labor Operation	Description	Labor Time	Trans. Type	Net Item
9107839*	Verified Module Software or Calibration Level: Module Is Programmed with Same Level Software or Calibration	0.2	ZFAT	N/A
9108068*	Image Processing Module Reprogramming with SPS ( <b>For RPO's WITH UKL/UK0 ONLY</b> )	1.0		
9108085*	Front View Camera Reprogramming with SPS ( <b>For RPO's WITH UGN/UHY and WITHOUT UKL/UK0</b> )	0.6		

**Important:** \* To avoid warranty transaction rejections, carefully read and follow the instructions below:

# Service Update

## N252521591 Unwanted Integrated Brake Assist



Labour Time [\[Top\]](#)

Labour Operation Code:

Additional labour op code information:

SPS Warranty Claim Code:

6125814

- The Warranty Claim Code from the programming event must be accurately entered in the “Warranty Claim Code” field of the transaction.
- When more than one Warranty Claim Code is generated for a programming event, it is required to document all Warranty Claim Codes in the “Correction” field on the job card. Dealers must also enter one of the codes in the “Warranty Claim Code” field of the transaction, otherwise the transaction will reject. It is best practice to enter the FINAL code provided by SPS2.

### Warranty Claim Code Information Retrieval

VIN	Module	Function	Warranty Claim Code	Job Card
[redacted]	K73 - Telematics Communication Interface Control Module	Programming & Service Activation	[redacted]	test
[redacted]	K9 - Body Control Module	Programming	[redacted]	test
[redacted]	K5 - Automatic Level Control Module Ignition	Off	[redacted]	test driver
[redacted]	K56 - Serial Data Gateway Module	Programming	[redacted]	test driver

If the Warranty Claim Code was not recorded on the Job Card, the code can be retrieved in the SPS2 system as follows:

1. Open TLC on the computer used to program the vehicle.
2. Select and start SPS2.
3. Select Settings (1).
4. Select the Warranty Claim Code tab (2).

The VIN, Warranty Claim Code and Date/Time will be listed on a roster of recent programming events. If the code is retrievable, dealers should resubmit the transaction making sure to include the code in the SPS Warranty Claim Code field.

### Service Procedure

**Caution:** Before downloading the update files, be sure the computer is connected to the internet through a network cable (hardwired). DO NOT DOWNLOAD or install the files wirelessly. If there is an interruption during programming, programming failure or control module damage may occur.

**Note:** Carefully read and follow the instructions below.

# Service Update

## N252521591 Unwanted Integrated Brake Assist

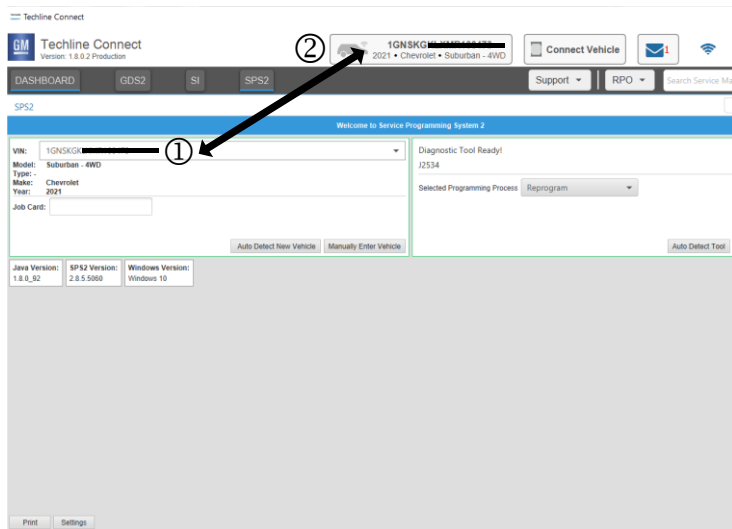


- Ensure the programming tool is equipped with the latest software and is securely connected to the data link connector. If there is an interruption during programming, programming failure or control module damage may occur.
- Stable battery voltage is critical during programming. Any fluctuation, spiking, over voltage or loss of voltage will interrupt programming. Install a GM Authorized Programming Support Tool to maintain system voltage. Refer to [www.gmdesolutions.com](http://www.gmdesolutions.com) for further information. If not available, connect a fully charged 12V jumper or booster pack disconnected from the AC voltage supply. DO NOT connect a battery charger.
- Follow the on-screen prompts regarding ignition power mode, but ensure that anything that drains excessive power (exterior lights, HVAC blower motor, etc) is off.
- Clear DTCs after programming is complete. Clearing powertrain DTCs will set the Inspection/Maintenance (I/M) system status indicators to NO.

**Important:** The service technician always needs to verify that the VIN displayed in the TLC left side drop down menu and the top center window match the VIN plate of the vehicle to be programmed prior to using Service Programming System 2 (SPS2) for programming or reprogramming a module.

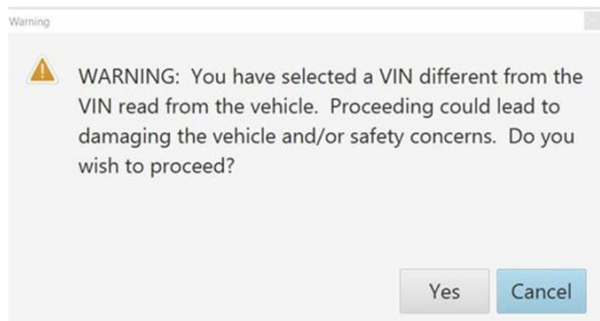
- For the TLC application, service technicians need to always ensure that the power mode (ignition) is “ON” before reading the VIN from the vehicle’s VIN master module and that they do not select a VIN that is already in the TLC application memory from a previous vehicle.
- If the VIN that shows up in the TLC top center window after correctly reading the VIN from the vehicle does not match the VIN plate of the vehicle, manually type in the VIN characters from the vehicle VIN plate into the TLC top center window and use these for programming or reprogramming the subject module with the correct vehicle VIN and software and/or calibrations.

**Caution:** Be sure the VIN selected in the drop down menu (1) is the same as the vehicle connected (2) before beginning programming.



5743643

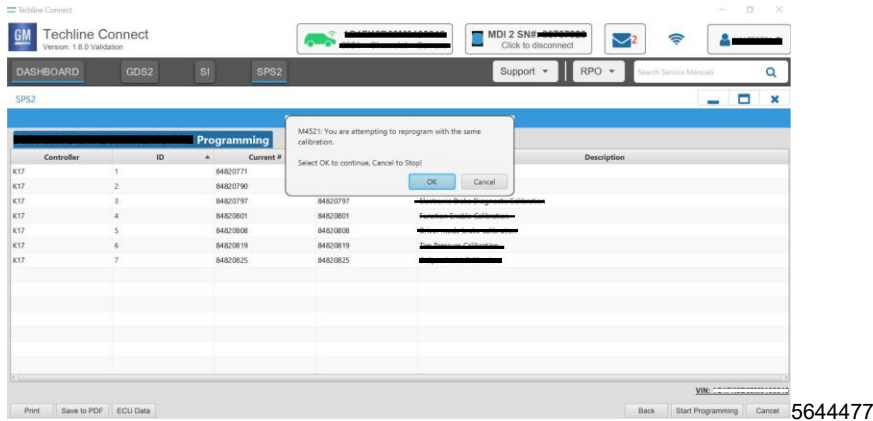
**Important:** If the vehicle VIN DOES NOT match, the message below will be shown.



5877000

# Service Update

## N252521591 Unwanted Integrated Brake Assist



**Important:** Techline Connect screens shown above.

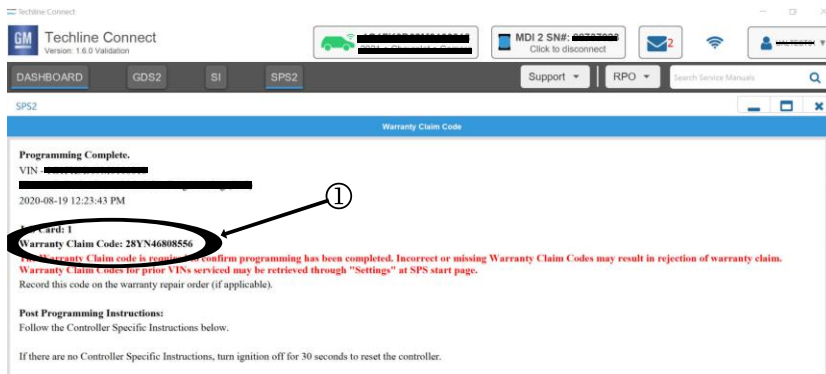
**Important:** If the same calibration/software warning is noted on the TLC Summary screen, select OK and follow screen instructions. After a successful programming event, the WCC is located in the Service Programming System dialogue box of the SPS Summary screen. No further action is required. Refer to the Warranty section of the bulletin.

### For RPO's WITH UKL/UK0 ONLY

1. Reprogram the Image Processing Module. Refer to *K124 Image Processing Module: Programming and Setup* in SI.

### For RPO's WITH UGN/UHY and WITHOUT UKL/UK0

2. Reprogram the Front View Camera. Refer to *B174W Front View Camera - Windshield: Programming and Setup* in SI.



5644478

**Note:** The screenshot above is an example of module programming and may not be indicative of the specific module that is being programmed. Module selection and VIN information have been blacked out.

**Important:** To avoid warranty transaction rejections, you **MUST** record the warranty claim code provided on the Warranty Claim Code (WCC) screen shown above on the job card. Refer to callout 1 above for the location of the WCC on the screen.

3. Record SPS Warranty Claim Code on job card for warranty transaction submission.

### Dealer Responsibility

Whenever a vehicle subject to this service update enters your vehicle inventory or is in your facility for service through the end date as noted in the Attention box, you must take the steps necessary to be sure the service update correction has been made before selling or releasing the vehicle.

All new, used, GM Certified Pre-Owned (CPO), courtesy transportation vehicles, dealer shuttle vehicles, CarBravo, etc. in dealers' possession and subject to this field action must be held and inspected/repaired per the service procedure of this bulletin before customers take possession of these vehicles. Involved vehicles must be held and not delivered to customers, dealer-traded, released to auction, used for demonstration, or any other purpose.

## Service Update

### N252521591 Unwanted Integrated Brake Assist



All GM Certified Pre-Owned (CPO) vehicles currently in the dealers' inventory within the SHIFT Digital system will be de-certified and must be held and remedied per the service procedure in this bulletin. Upon submitting an accepted/paid warranty transaction in the Global Warranty Management (GWM) system, the vehicle can be re-certified for sale within the SHIFT Digital system, or once again be used in the Courtesy Transportation Program.

#### Dealer Reports – For USA and Export

The Inventory tab of the Open Vehicle Report will contain Service Update Bulletin VINs that apply to this field action. This information is intended to assist dealers with the **PROMPT COMPLETION** of these vehicles. The Customer In-Service tab will not contain Service Update Bulletin VIN data because the intent of a Service Update Bulletin is to not inconvenience a customer with a special trip for service. Service Update Bulletins are to be completed when the customer is in for a regularly scheduled visit.

---

GM bulletins are intended for use by professional technicians, NOT a "do-it-yourselfer". They are written to inform these technicians of conditions that may occur on some vehicles, or to provide information that could assist in the proper service of a vehicle. Properly trained technicians have the tools, equipment, safety instructions, and know-how to do a job properly and safely. If a condition is described, DO NOT assume that the bulletin applies to your vehicle, or that your vehicle will have that condition. See your dealer for information on whether your vehicle may benefit from the information.



**We Support  
Voluntary Technician  
Certification**