



TECHNICAL SERVICE BULLETIN

Classification: EC25-015	Reference: NTB25-063	Date: January 7, 2026
-----------------------------	-------------------------	--------------------------

VENT CONTROL VALVE IN ACTIVE TEST INOPERATIVE IN CONSULT 4

APPLIED VEHICLES: 2025-2026 Armada (Y63)
2025-2026 Kicks (P16)
2025-2026 Murano (Z53)
2025 Pathfinder (R53)
2024-2026 Rogue (T33)

SERVICE INFORMATION

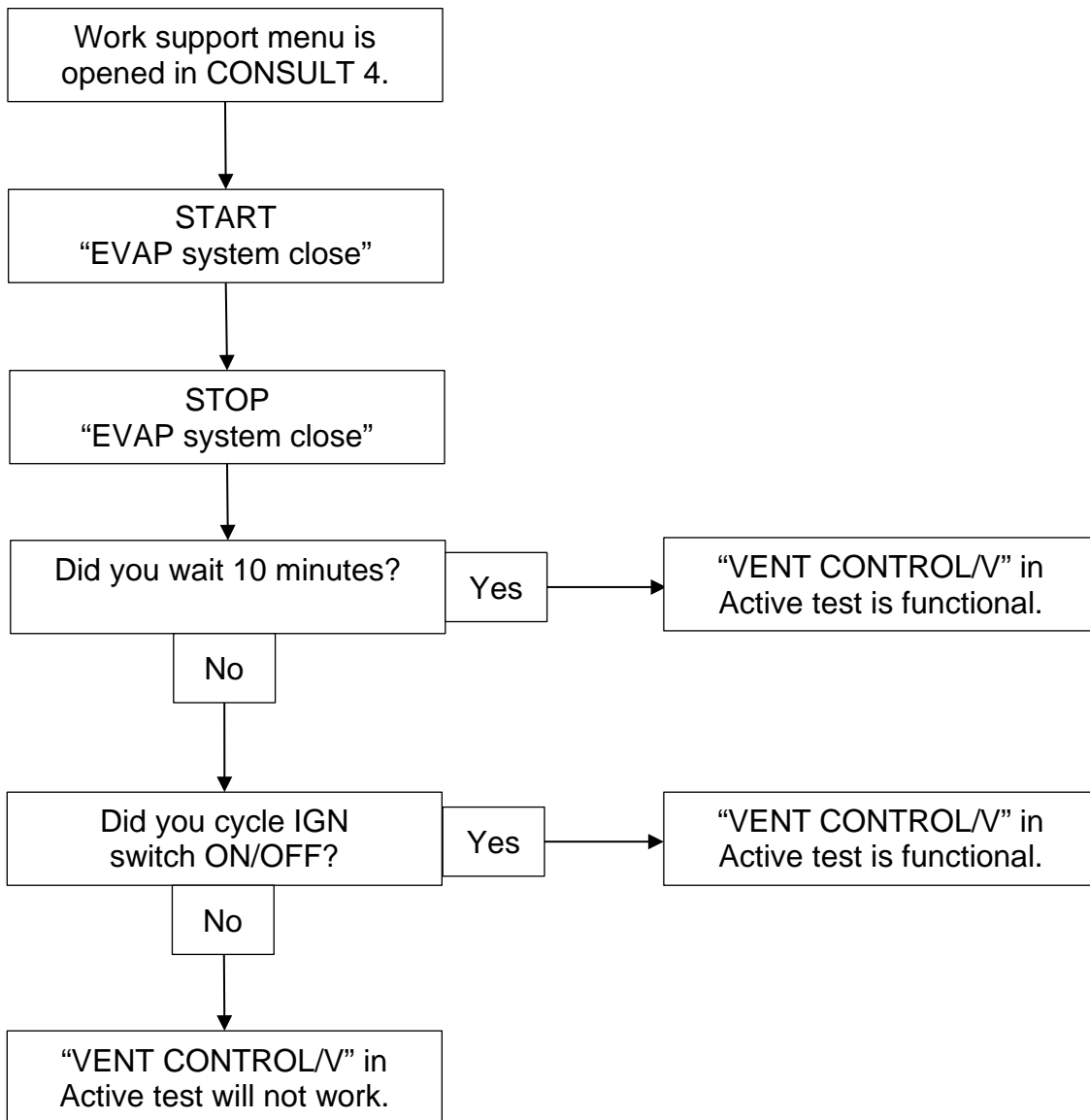
An issue in CONSULT 4 has been identified in “EVAP system close” in Work support.

- After selecting the "EVAP system close" in Work support, the “VENT CONTROL/V” in Active test becomes non-functional temporarily.
- When selecting “EVAP system close” operation in Work support, wait 10 minutes before starting “VENT CONTROL/V” Active test or cycle the IGN switch ON/OFF for “VENT CONTROL/V” Active test to be operational.

HINT: This bulletin applies to model years that use CONSULT 4 only.

Bulletins are intended for use by qualified technicians, not 'do-it-yourselfers'. Qualified technicians are properly trained individuals who have the equipment, tools, safety instruction, and know-how to do a job properly and safely. **NOTE:** If you believe that a described condition may apply to a particular vehicle, DO NOT assume that it does. See your Nissan dealer to determine if this applies to your vehicle.

OVERVIEW



REFERENCE SCREENS FROM CONSULT 4

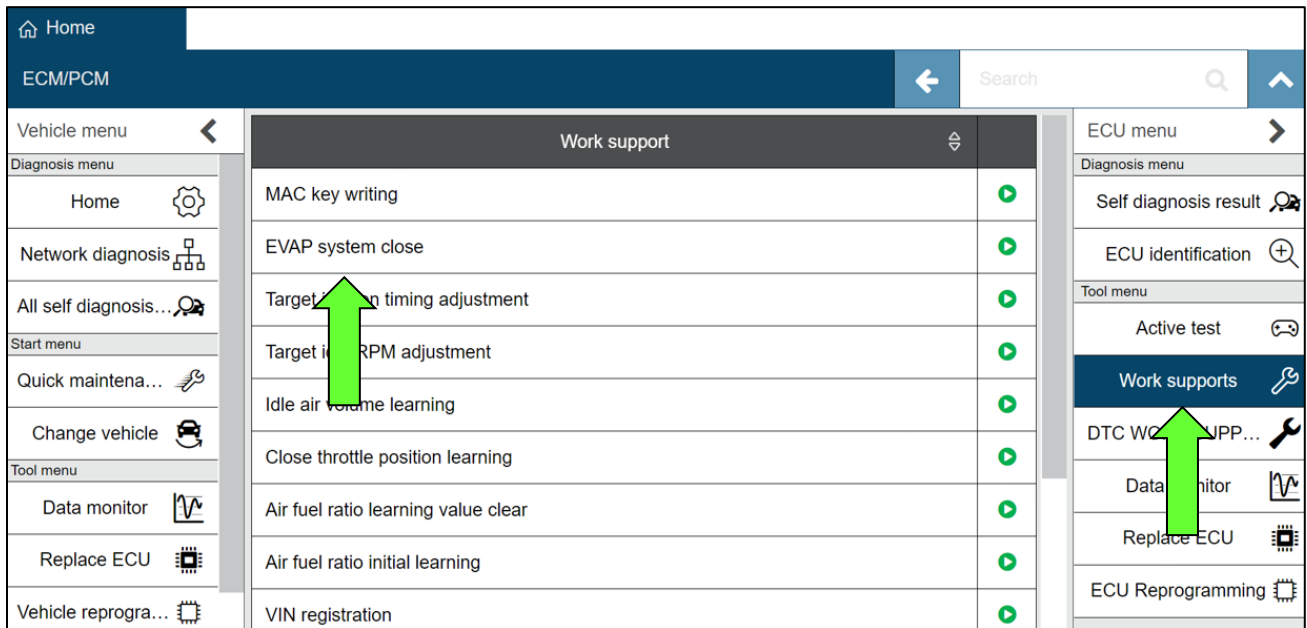


Figure 1

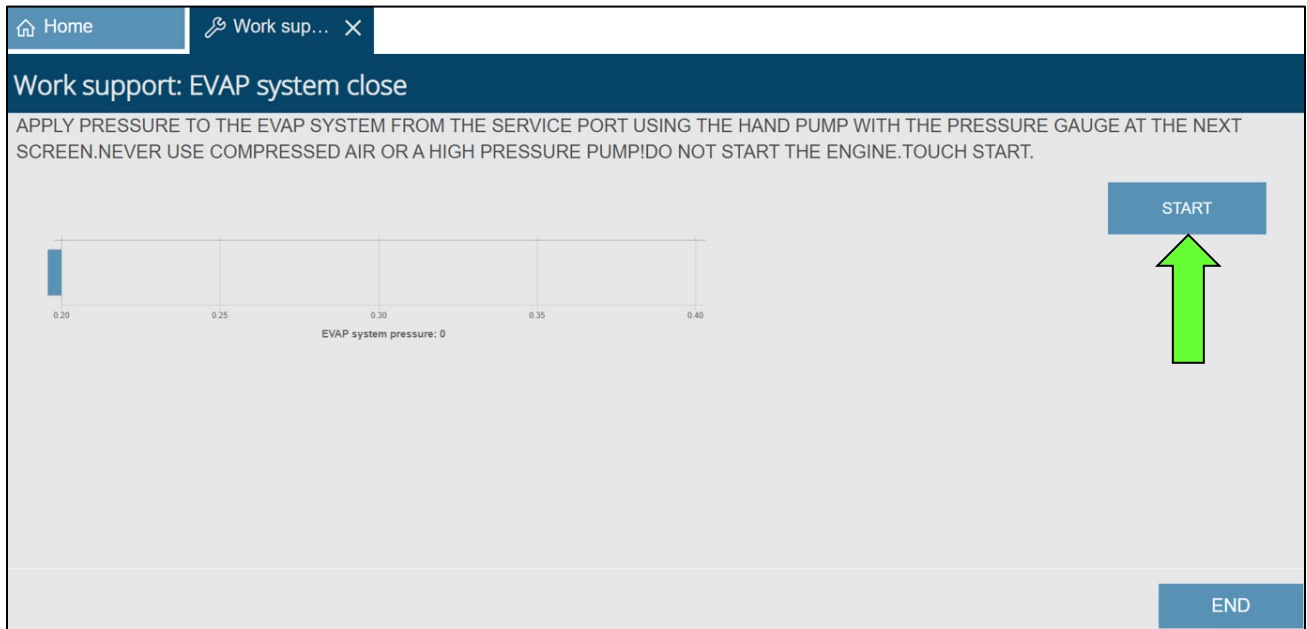


Figure 2

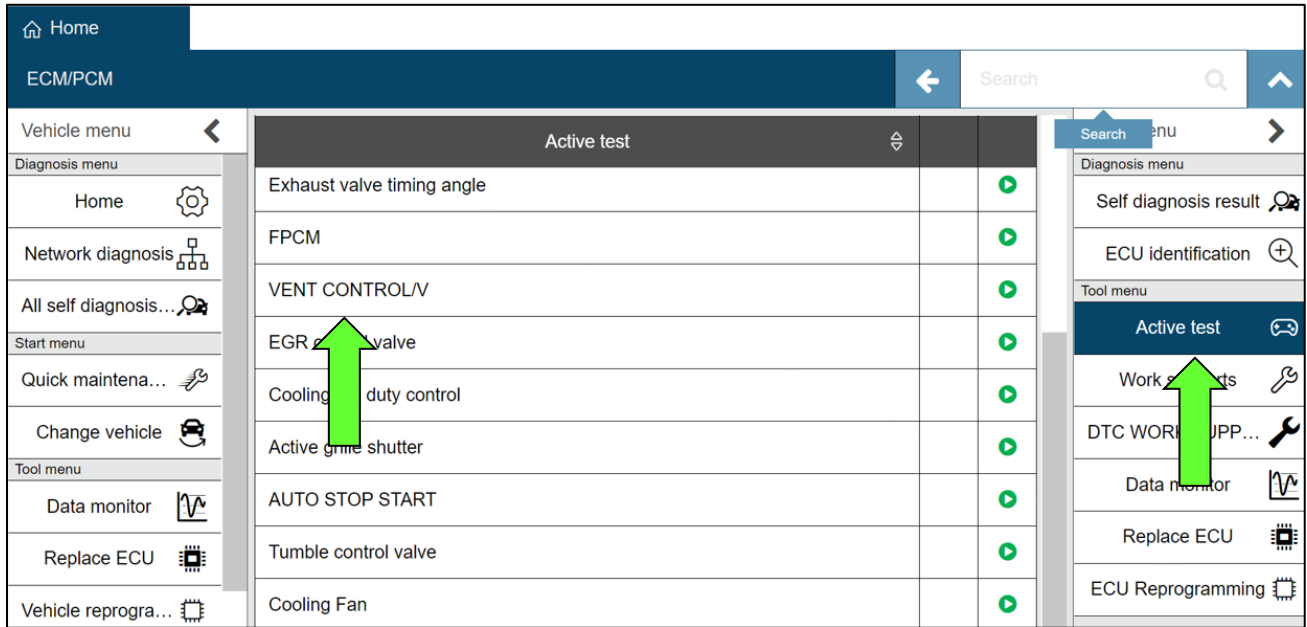


Figure 3

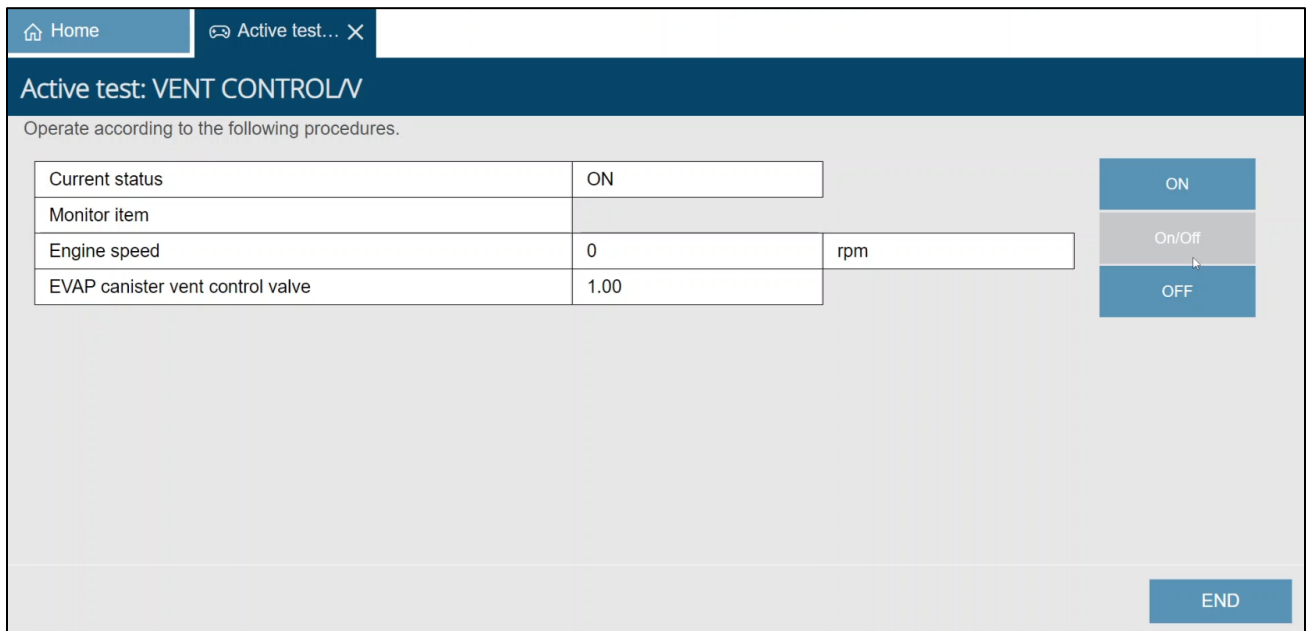


Figure 4

AMENDMENT HISTORY

PUBLISHED DATE	REFERENCE	DESCRIPTION
January 7, 2026	NTB25-063	Original bulletin published