



I N F I N I T I

Nissan Group of the Americas  
Copyright ©

# TECHNICAL SERVICE BULLETIN

|                             |                         |                          |
|-----------------------------|-------------------------|--------------------------|
| Classification:<br>EC25-016 | Reference:<br>ITB25-014 | Date:<br>January 7, 2026 |
|-----------------------------|-------------------------|--------------------------|

## VENT CONTROL VALVE IN ACTIVE TEST INOPERATIVE IN CONSULT 4

**APPLIED VEHICLES:** 2025-2026 QX60 (L51)  
**APPLIED VINS:** 2025-2026 QX80 (Z63)

### SERVICE INFORMATION

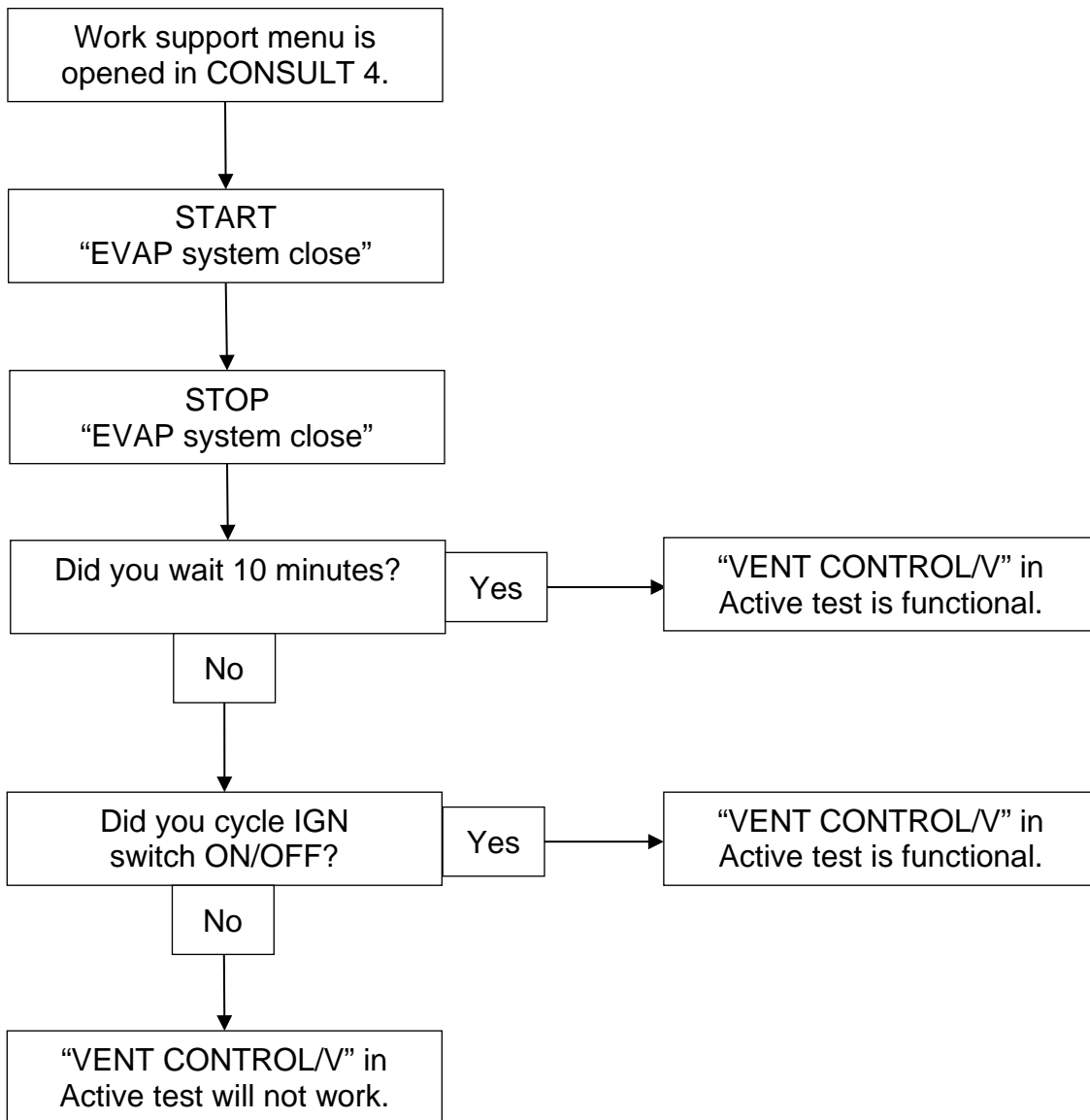
An issue in CONSULT 4 has been identified in “EVAP system close” in Work support.

- After selecting the "EVAP system close" in Work support, the “VENT CONTROL/V” in Active test becomes non-functional temporarily.
- When selecting “EVAP system close” operation in Work support, wait 10 minutes before starting “VENT CONTROL/V” Active test or cycle the IGN switch ON/OFF for “VENT CONTROL/V” Active test to be operational.

**HINT:** This bulletin applies to model years that use CONSULT 4 only.

Bulletins are intended for use by qualified technicians, not 'do-it-yourselfers'. Qualified technicians are properly trained individuals who have the equipment, tools, safety instruction, and know-how to do a job properly and safely. **NOTE:** If you believe that a described condition may apply to a particular vehicle, DO NOT assume that it does. See your Infiniti retailer to determine if this applies to your vehicle.

## OVERVIEW



# REFERENCE SCREENS FROM CONSULT 4

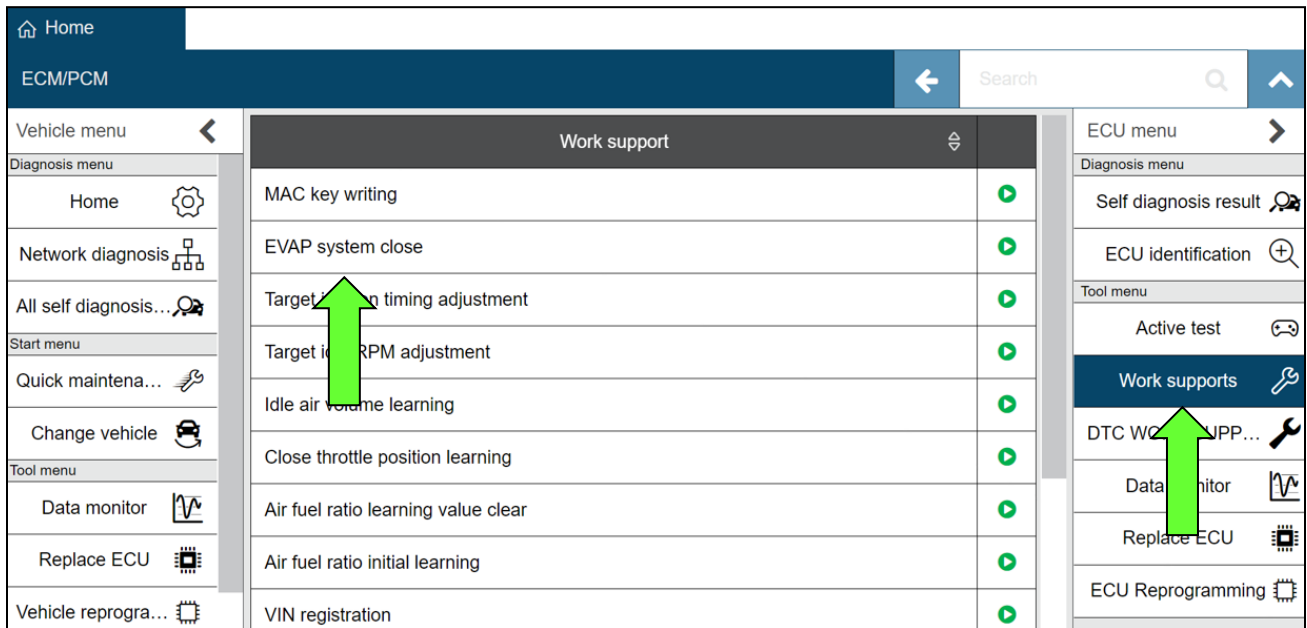


Figure 1

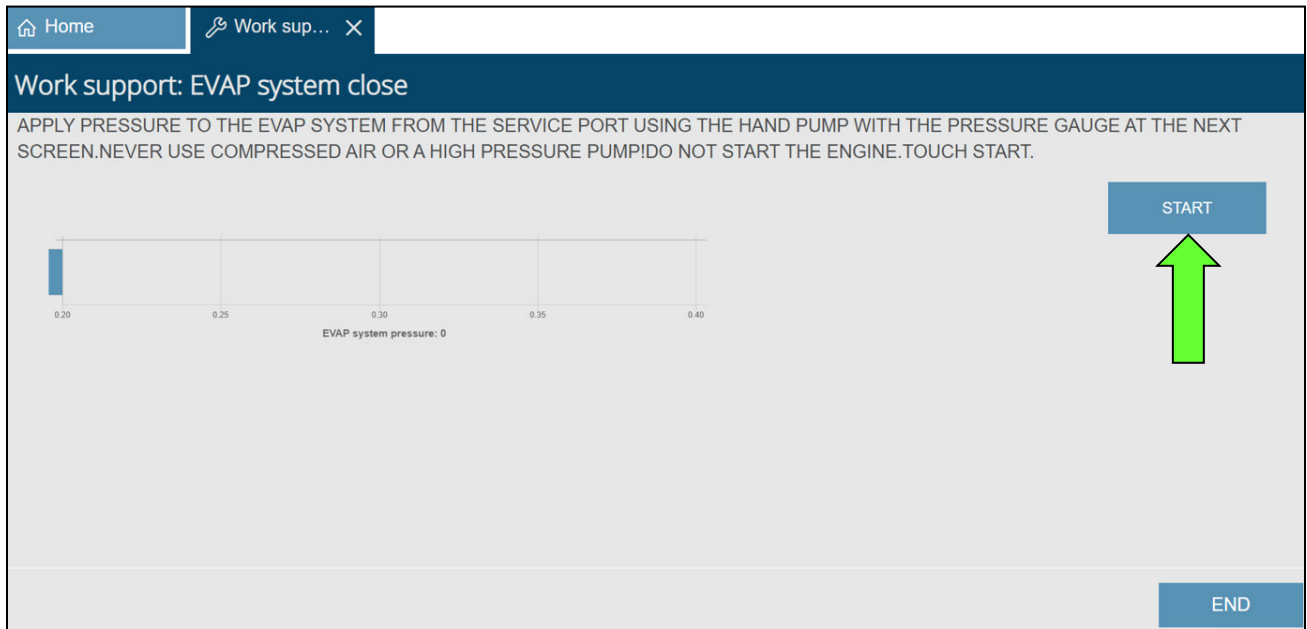


Figure 2

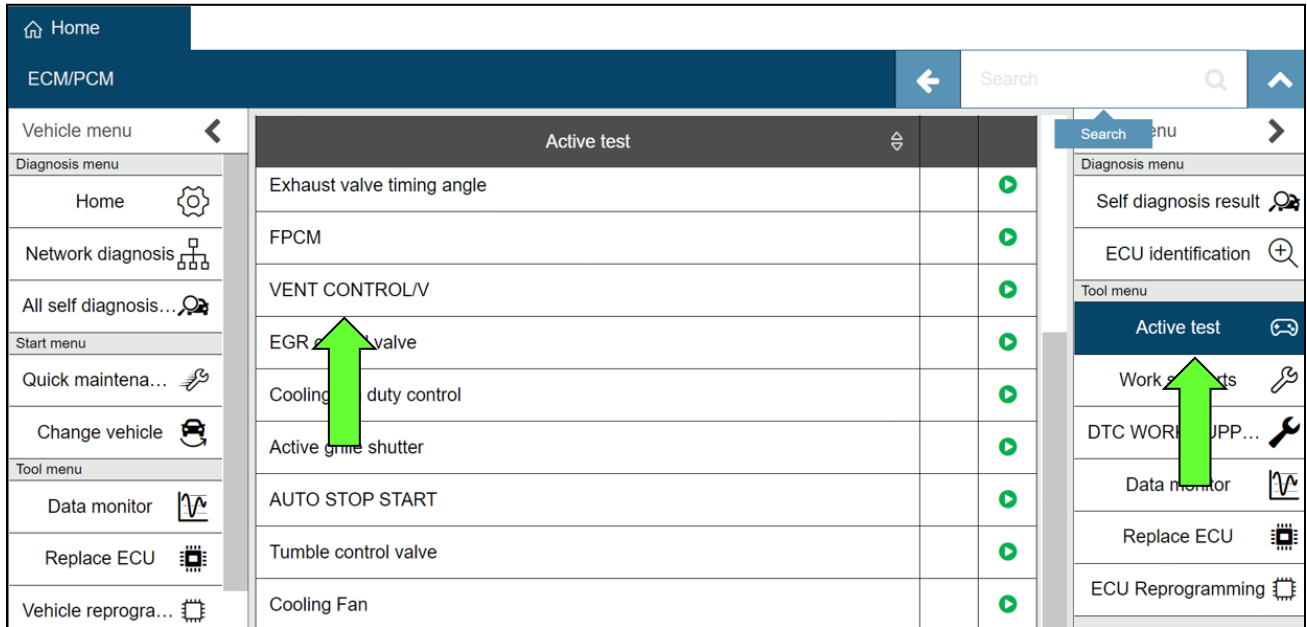


Figure 3

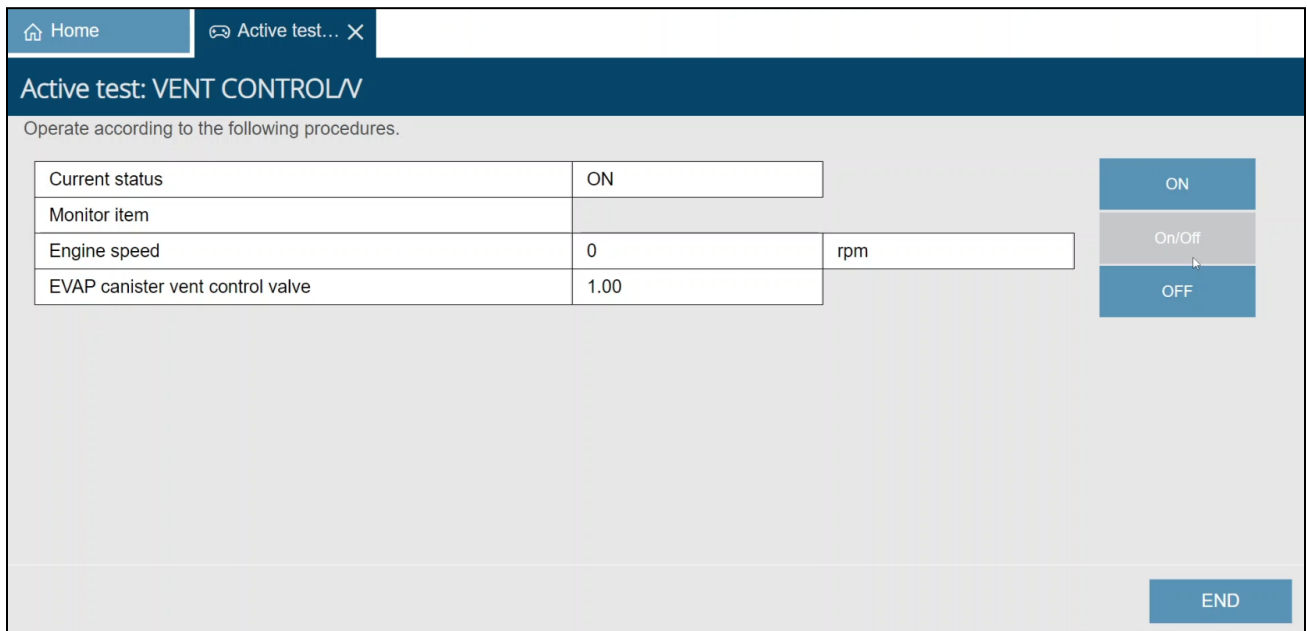


Figure 4

### AMENDMENT HISTORY

| PUBLISHED DATE  | REFERENCE | DESCRIPTION                 |
|-----------------|-----------|-----------------------------|
| January 7, 2026 | ITB25-014 | Original bulletin published |