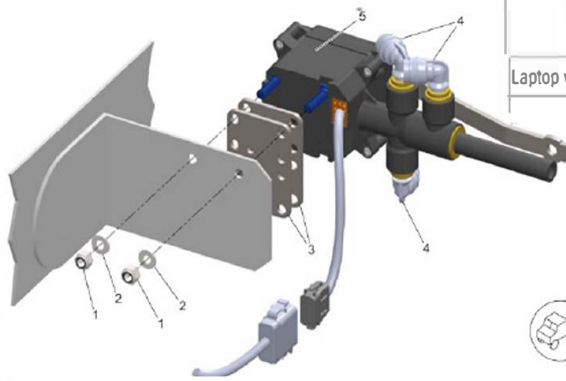


Hadley Smart Valve – Raising Suspension



- 11/26/2018
1. 1/4-20 Locknut
 2. 1/4 Flat Washer
 3. EHCV Mounting Spacer

4. 90° Stem Fitting - 1/4 PTC X 3/8"
5. Series, EHCV Valve

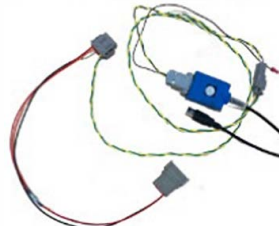
Fig. 1, Hadley SmartValve

EQUIPMENT NEEDED

Intrepid Control Systems ValueCAN 4



Link SmartValve CAN Programming Cable



Laptop with Link SmartValve CAN Interface 5

[ECU – HSV - Technical Literature](#)
[ECAS Calibration, Height and Pressure Sensors - Technical Literature](#)

Concern:

Hadley Valve causing rear suspension ride height to inflate to max

Affected Models: 4th Generation Cascadia

Root Cause:

Software bug causing unintended raised suspension while in bobtail mode

Correction:

Current Field Fix: Replace valve with latest p/n **OR** Laptop + CAN cable firmware to area w/ highest concentration of trucks

Customer Advisory Letter: TBD; expected within Q1 timeframe

Campaign: Date TBD to hit remaining population

Production Changeover Date: December 2025 (any parts received now are the latest version)

Data Book Code: 888-084

Fleet Population: ~206 Units Affected