



TECH TIP

ID No. TT-25-012
Ref. No.
Release Date 12/01/2025

DX3 INF CREATION

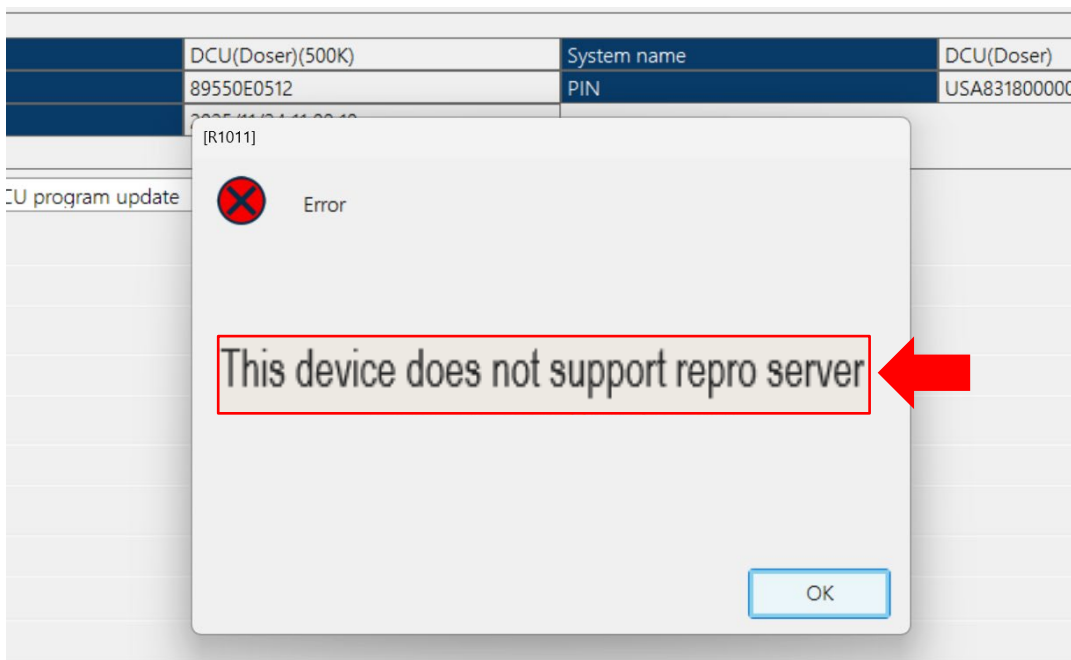
SUBJECT VEHICLES

2011 – Current model year Hino Conventional and 2013 – 2020 model year Hino COE trucks equipped with reprogrammable control modules supported by the Hino Repro Server.

NOTICE: This Technical Tip is provided as technical information and is not authorization for a warrantable repair.

OVERVIEW

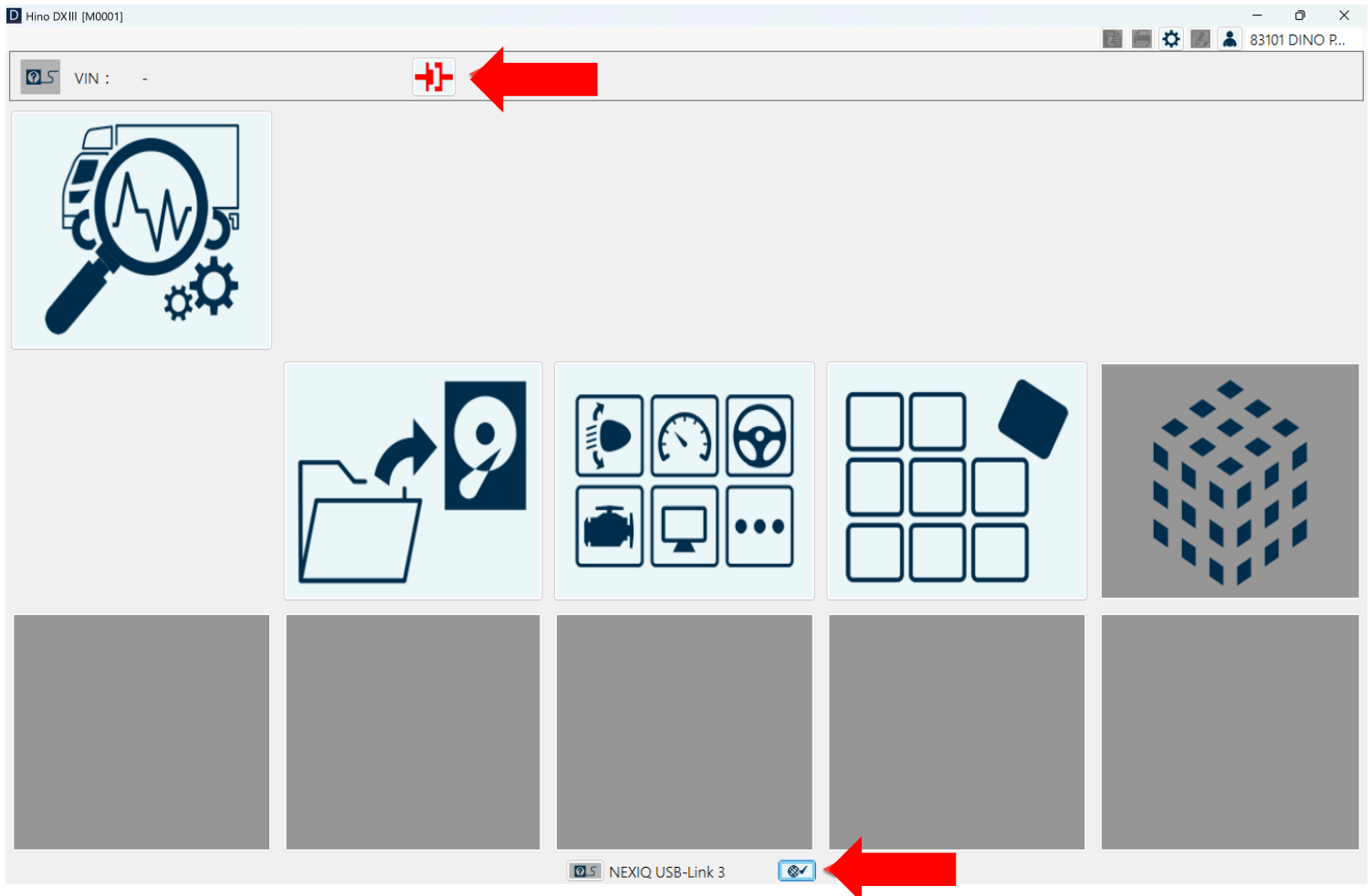
When reprogramming a control module that is supported by the Hino Reprogramming server such as an Engine, Vehicle or Doser control module (ECU, VCS, DCU), the error below may be seen in DX3 when attempting to reprogram. This is typically the result of the VIN not being registered with the Hino Repro Server. This will require creation of an INF file via the DX3 and registering the file on the Hino Repro Server.



SERVICE PROCEDURE

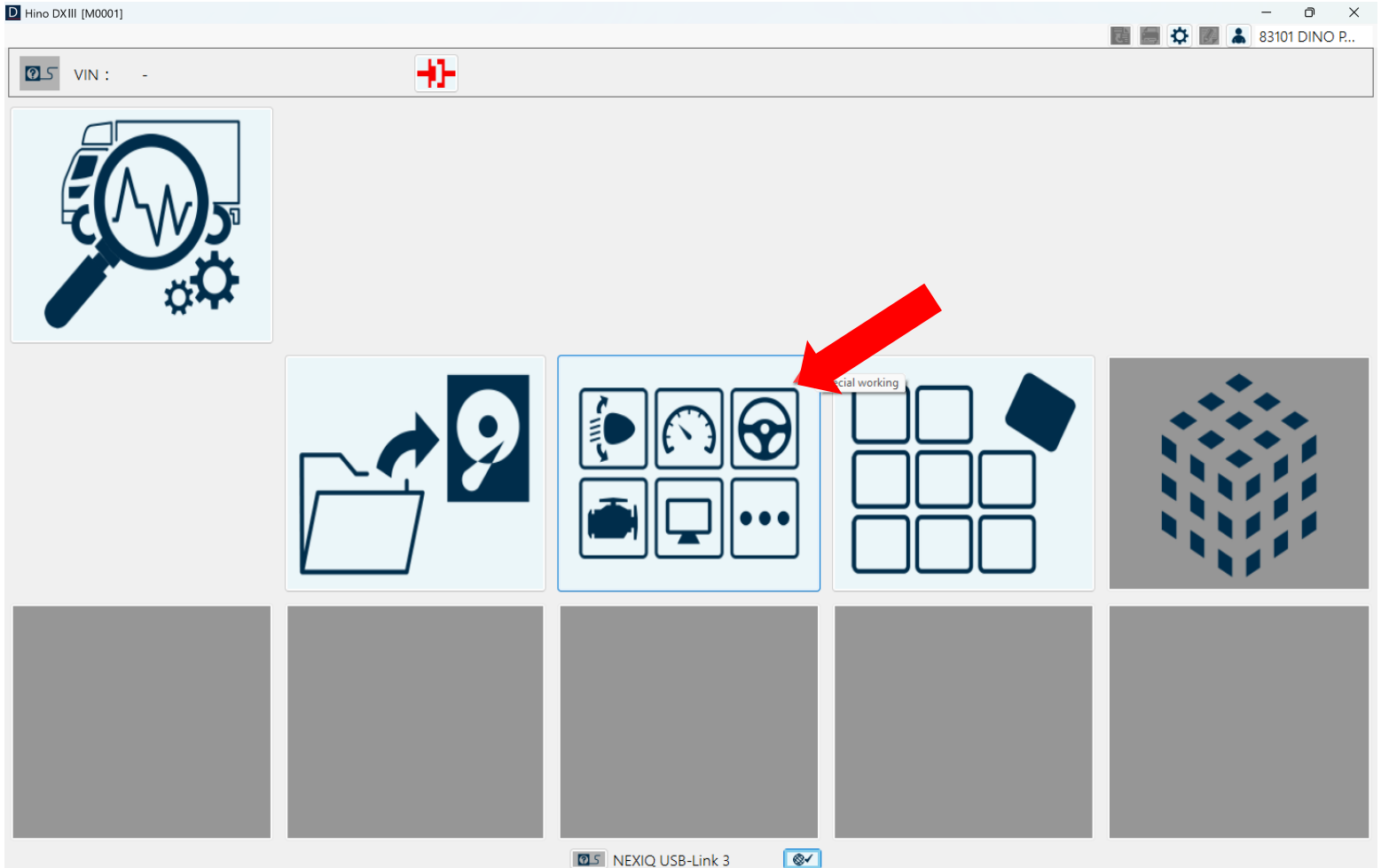
IMPORTANT - Prior to following the procedures below, make sure the module in which requires reprogramming is supported by the reprogramming server.

1. Open DX3, USB-link connected to the truck and computer. Do **NOT** start a DX session (at the top, connection status should be red as shown), however make certain the DX3 is **connected to the internet** (bottom of the screen, should see a check mark as shown).



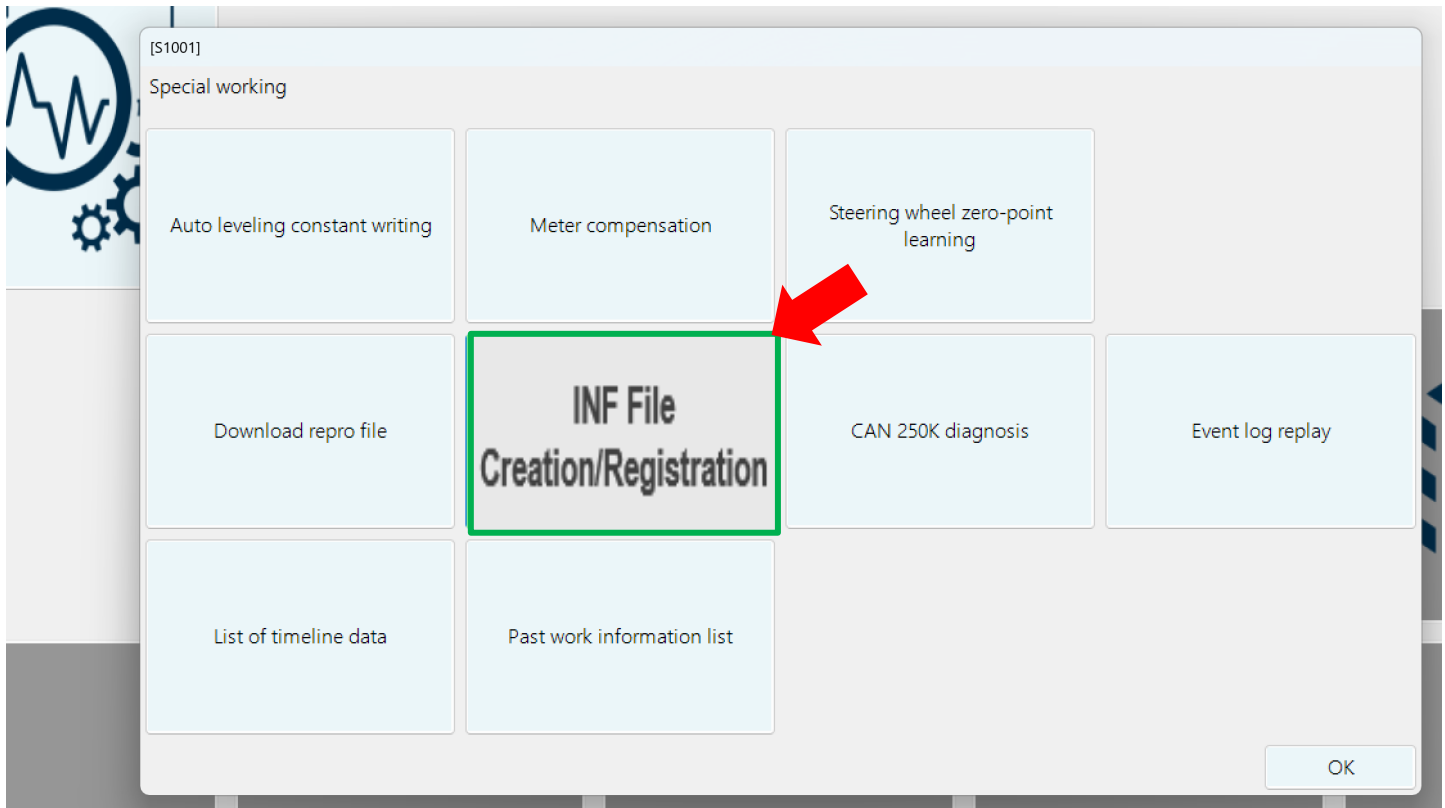
SERVICE PROCEDURES

2. From the DX3 main connection page, click on Special Working



SERVICE PROCEDURES

3. Select INF File Creation/Registration



4. Follow DX3 prompts to complete the INF file creation from the truck.
5. Once INF file upload has completed and confirmed, perform reprogramming of control module(s) as needed.