

- ATTENTION:**
- GENERAL MANAGER
  - PARTS MANAGER
  - CLAIMS PERSONNEL
  - SERVICE MANAGER

IMPORTANT - All Service Personnel Should Read and Initial in the boxes provided, right.


© 2025 Subaru of America, Inc. All rights reserved.



QUALITY DRIVEN® SERVICE

## SERVICE BULLETIN

**APPLICABILITY:** 2022-25MY Outback Wilderness

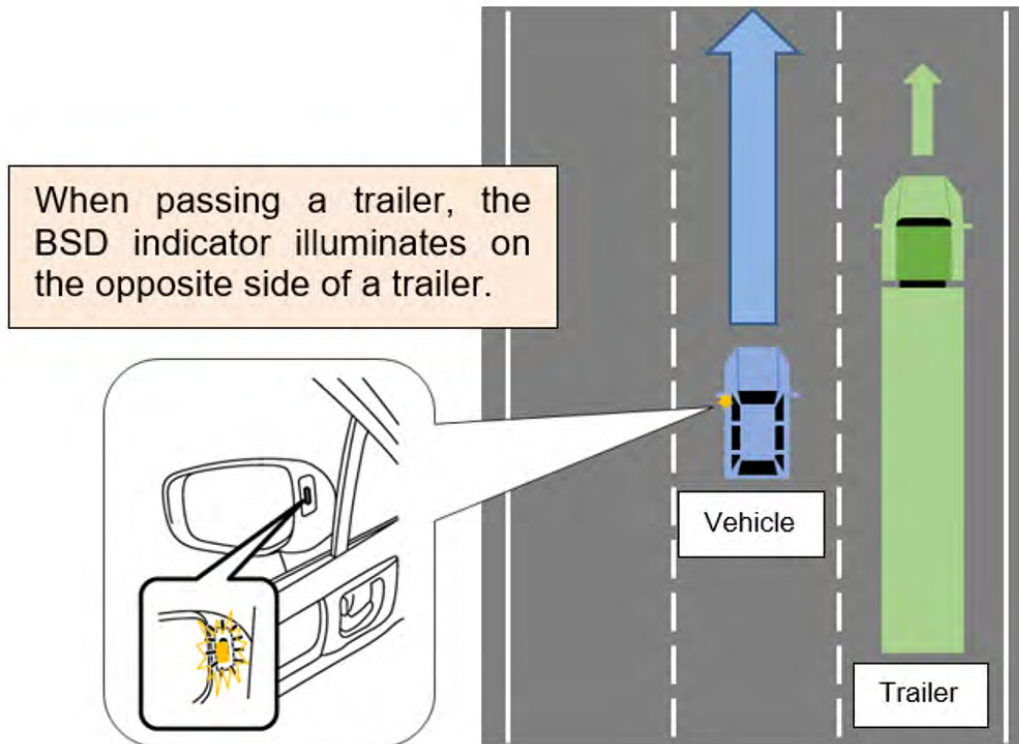
**NUMBER:** 07-237-25

**SUBJECT:** Blind Spot Detection Radar  
Assembly / Design Change

**DATE:** 12/11/25

**INTRODUCTION:**

This bulletin announces the availability of a new Blind Spot Detection (BSD) radar assembly. The updated radar assembly features revised software designed to address rare instances where, while passing a large vehicle, the BSD indicator may illuminate on the opposite side of the vehicle from where the large vehicle is located. If this symptom is reported, please follow the procedure outlined below.



<p><b>CAUTION: VEHICLE SERVICING PERFORMED BY UNTRAINED PERSONS COULD RESULT IN SERIOUS INJURY TO THOSE PERSONS OR TO OTHERS.</b></p> <p>Subaru Service Bulletins are intended for use by professional technicians ONLY. They are written to inform those technicians of conditions that may occur in some vehicles, or to provide information that could assist in the proper servicing of the vehicle. Properly trained technicians have the equipment, tools, safety instructions, and know-how to do the job correctly and safely. If a condition is described, DO NOT assume that this Service Bulletin applies to your vehicle, or that your vehicle will have that condition.</p>	<p style="text-align: center;"><b>Subaru of America, Inc. is ISO 14001 Compliant</b></p> <p>ISO 14001 is the international standard for excellence in Environmental Management Systems. Please recycle or dispose of automotive products in a manner that is friendly to our environment and in accordance with all local, state and federal laws and regulations.</p>
--	--

*Continued...*

**PART INFORMATION:**

**REMINDER:** Always order the most up-to-date replacement parts based on the specific VIN being repaired.

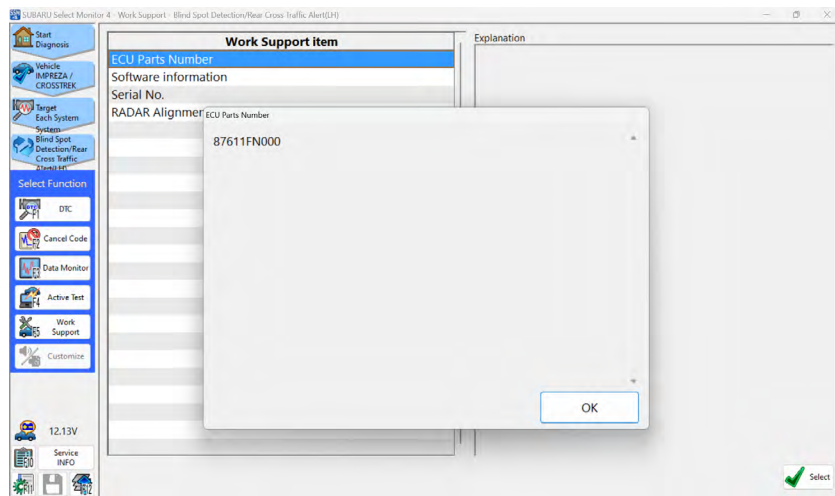
Old Part Number	Part Description	New Part Number
87611AN00B 87611AN00C 87611XC01A 87611XC02A	RADAR ASSEMBLY-BACK AND SIDE	87693AN00A

**SERVICE PROCEDURE / INFORMATION:**

**REMINDER:** Customer satisfaction and retention starts with performing quality repairs.

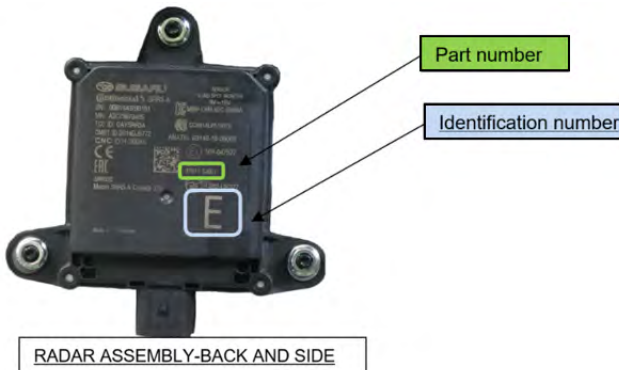
**Inspect the part number of the radar assemblies installed on the vehicle and replace any radar unit if the part number is 87611XC02A or older. Inspection of the part numbers can be done using either of the following methods:**

Using the Subaru Select Monitor, navigate to:  
**Blind Spot Detection/Rear Cross Traffic Alert (LH or RH) → Work Support → ECU Part Number**



**Visually inspect** the part number printed directly on the radar unit. The part number is located next to the identification number.

**Note:** Ensure both rear radar assemblies have part number **87693-AN00A** or a newer superseding version. Replace any radar unit if the part number is **87611XC02A** or older.



Old Part Number	New Part Number
87611AN00B	87693AN00A
87611AN00C	
87611XC01A	
87611XC02A	

*Continued...*

The service procedures for radar sensors remain unchanged. Always refer to the applicable Service Manual and review the full requirements of the repair being performed. The Service Manual procedures contain information critical to performing an effective repair the first time, every time. This includes but is not limited to important SAFETY precautions, proper inspection criteria, necessary special tools, required processes and related one-time-use parts needed for a complete and lasting repair.

Body & Electrical/WIRING SYSTEM>Blind Spot Detection/Rear Cross Traffic Alert>Radar Sensor

#### WARRANTY / CLAIM INFORMATION:

For vehicles within the Basic New Car Limited Warranty period or covered by an active SAS Gold plan, this repair may be submitted using the following claim information:

Labor Description	Labor Operation #	Labor Time	Fail Code
ONE BSD/RCTA UNIT R&R	B067-186	.5	ZQC-43 (Sub Unit)
			ZQD-43 (Main Unit)
BSD/RCTA SYSTEM DIAGNOSIS	C067-800	.4	
BSD/RCTA TARGET ADJUSTMENT, ONE SIDE	C067-828	.4	

Labor Description	Labor Operation #	Labor Time	Fail Code
BOTH BSD/RCTA UNIT R&R	B067-286	.6	ZQJ-43 (Both Units)
BSD/RCTA SYSTEM DIAGNOSIS	C067-800	.4	
BSD/RCTA TARGET ADJUSTMENT, ONE SIDE	C067-838	.8	

#### IMPORTANT REMINDERS:

- SOA strongly discourages the printing and/or local storage of service information as previously released information and electronic publications may be updated at any time.
- Always check for any open recalls or campaigns anytime a vehicle is in for servicing.
- Always refer to STIS for the latest service information before performing any repairs.