



SIB 12 03 24

B48P AND B48R ENGINE: FC 034AEF EXHAUST COLD START, NOT CONTROLLABLE
2025-12-17

This Service Information Bulletin (Revision 3) replaces SI B12 03 24 dated December 2025.

What's New:

- Procedure

<input type="checkbox"/>	THIS REPAIR IS MOBILE FRIENDLY
<input type="checkbox"/>	THIS REPAIR IS REMOTE SOFTWARE UPGRADE (RSU) FRIENDLY

MODEL

U11 X1 Sports Activity Vehicle
U10 X2 Sports Activity Vehicle

SITUATION

The Engine Malfunction Warning is illuminated, and the following fault code is stored in the DME-

FC 034AEF Exhaust Cold Start, Not Controllable

CAUSE

A DME calibration error.

PROCEDURE

A. Program the vehicle using ISTA 4.46.2X or higher (released March 11th, 2024).

Model	Target Integration level
U11, U10	U006-24-03-5XX or higher

Note that ISTA will automatically reprogram and code all programmable control modules that do not have the latest software.

Always connect a BMW-approved battery charger/power supply (SI B04 23 10) when performing programming.

For information on programming and coding with ISTA, refer to DealerSpeed / TIS / Technical Documentation / Diagnostics and Programming / Programming Documentation.

B. If the vehicle returns with fault code 034AEF stored and/or the i-level is above U006-24-03-5XX proceed with the steps below.

1. Check the vehicle's DME software identifier SWFK as shown in the example below.
Does your vehicle match one of the following software versions (9B85, A9D7, AC0A, AC09)?
 - a. Yes – Create a TSARA programming case titled "IRAP B4x VANOS" Prior to this make sure to follow **B09 02 16 for proper scheduling. See noted steps below that must be followed prior to IRAP being started.**

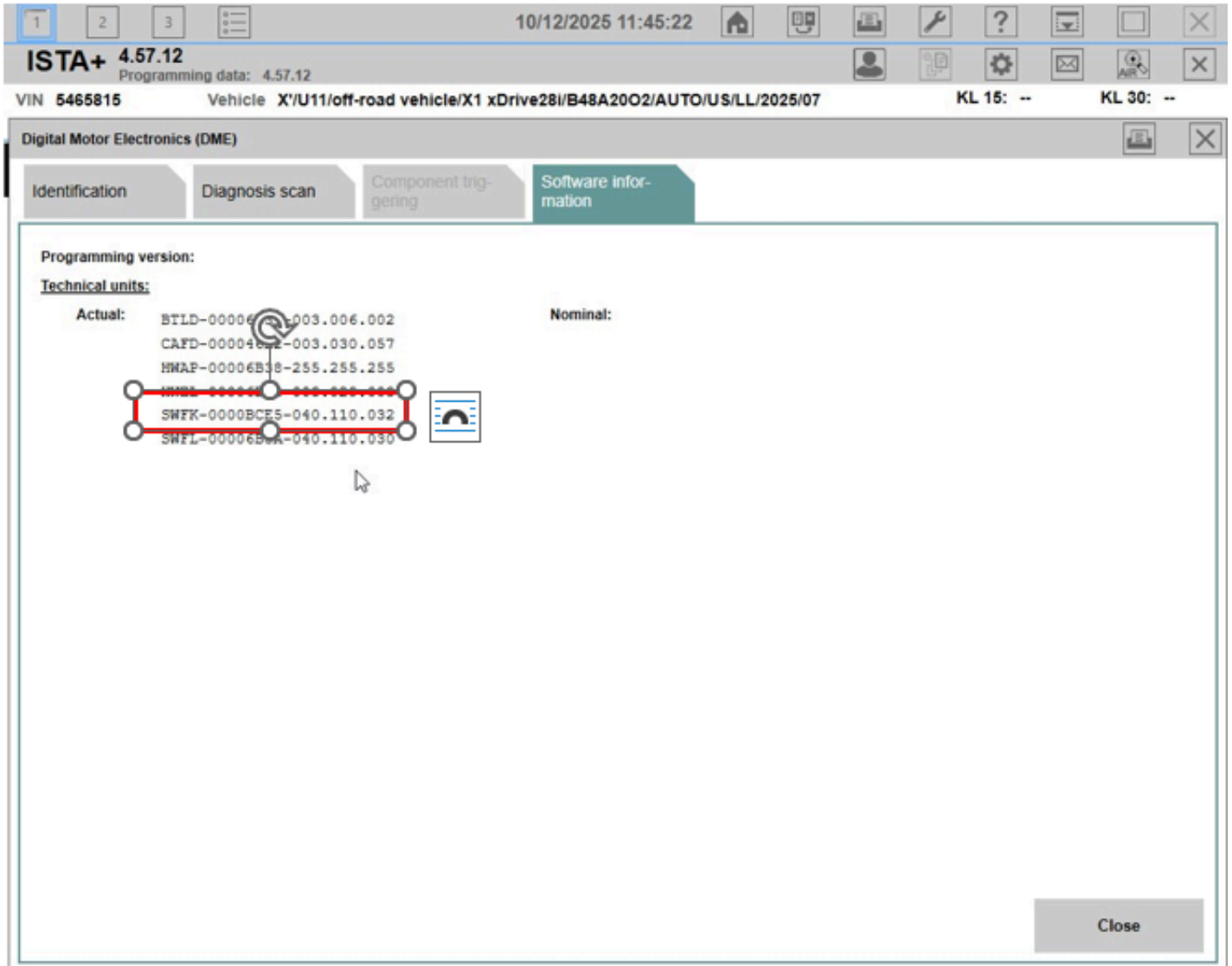
Important notes: We must have engine oil and coolant at the same temperature (within 1 degree is permitted) prior to starting the IRAP. If the vehicle has been sitting either outside or inside and can be programmed without the engine being started, you can proceed.

If the vehicle has a warm and/or hot engine we CANNOT proceed. Warm and/or hot engines will require 8+ hours sitting. Once the engine has cooled down and the temps are within 1 degree of

each other please set up for IRAP.

After completing the IRAP you will need to connect the vehicle to ISTA and calculate a new measures plan. The DME will be automatically selected for programming. Complete the programming and then proceed to cold start the vehicle. If the fault code returns after the warmup phase, please create a TSARA case. If the fault code does not return you can release the vehicle to customer.

b. No – Proceed to step 2.



2. Update the vehicle software to U006-25-11-5xx or higher released with ISTA version 4.57.1x on December 3, 2025.

CLAIM INFORMATION

Vehicle Programming and Encoding

During this workshop visit, the affected vehicle may also show one or more programming and encoding Technical Campaign repairs open, the programming and encoding procedure may only be invoiced one time.

Select one of these open Technical Campaigns to perform and submit for updating the vehicle to the required I-level, or higher when applicable (Includes labor operation codes 00 00 006/556, 61 21 528 and 61 00 730).

Please be sure to also perform any additional before and/or after work (including attaching labels) as required by Copyright ©2025 BMW of North America, Inc.

in the corresponding Service Information Bulletin.

Only when the above does not apply, the BMW software solution is then covered under the terms of the BMW New Vehicle Limited Warranty for Passenger Cars and Light Trucks (Including CA 7/70, Federal 8/80), or the BMW Certified Pre-Owned Program as described below.

Repair Code:	1136019900	Camshaft adjusting unit (VANOS) Fault code stored in diagnosis fault code memory (no warning lamp)
---------------------	-------------------	---

Obtain the flat rate unit (FRU) allowances for the following that applies.

Labor Operation	Description	Labor Allowance
00 00 006	Carrying out vehicle test (Main work)	As applicable
Or:		
00 00 556	Carrying out vehicle test (Plusposition work)	As applicable
And:		
61 21 528	Supporting voltage of the vehicle electrical system / recharging vehicle battery	As applicable
And, as needed:		
61 00 006*	Carrying out vehicle diagnosis, ABL (Work time)	WT FRU
Or:		
00 58 500*	Diagnosis Worktime Flat Rate	2 FRU
And:		
61 00 730	Program/encode control unit(s), includes deleting the fault memory	As applicable

If you are using a Main labor code for another repair, use the Plus code labor operation 00 00 556 instead of 00 00 006, or exclude them (including 61 21 528) when the Vehicle Test is included in another repair.

Work time labor operation codes 61 00 006 and 00 58 500 are not considered Main labor operations.

Vehicle Programming and Encoding – Additional Work (RO and Claim Comments Required)

This procedure automatically reprograms and encodes any vehicle control modules that do not have the latest software I-level.

If one or more control modules fail during the reprogramming procedure, claim the required consequential repair work procedures to address this issue (including performing the IRAP Control Unit Recovery first as required, refer to the SIB in AIR) under the Repair Code in this bulletin together with the corresponding labor operation codes and their flat rate unit (FRU) allowance(s), including the diagnosis* that applies.

Please explain the additional work procedures that were performed (The why and the what) on the repair order and in the claim comments.

For covered repairs that address control module failures that occurred prior to performing this reprogramming procedure, claim this work with the applicable Repair Code listed in AIR together with the corresponding labor operation codes and their flat rate unit (FRU) allowance(s), including the diagnosis* that applies.

(*) Based on which one applies to your center, please refer to [SI B01 01 20](#) or [B01 07 20](#) for the applicable procedure for documenting, claiming, and explaining, on the RO and in the claim comments, your diagnosis work time (WT), job/repair work time (WT) and the vehicle repairs your center performed, unless otherwise required by State law

Copyright ©2025 BMW of North America, Inc.

BMW Group's AIR Application Resource for Flat Rate Labor Operation Codes

To obtain the corresponding flat rate unit (FRU) allowance information from the BMW Group AIR application resource, start by entering the the Chassis Number (last seven (7) characters of the VIN), and click on the "Search" icon. If the "Vehicle Selection" window displays two or more model possible vehicle choices, select the applicable Model, or enter the full VIN (17 characters) instead to proceed. Click on the "Flat Rate Units" button and enter a flat rate labor operation code number "without spaces" in the field to the right, click on the "Search" icon to display the corresponding listing of "Flat rate unit group details" that are available and their corresponding FRU allowances.

FEEDBACK REGARDING THIS BULLETIN

Technical Feedback	To submit feedback for the technical topic of this bulletin: Submit your feedback in the rating box at the top of this bulletin
Warranty Feedback	To submit feedback for the CLAIMS section of this bulletin: Submit an IDS ticket to the Warranty Department, or use the chat available in the Warranty Documentation Portal
Parts Feedback	To submit feedback for the PARTS section of this bulletin: Submit an IDS ticket to the Parts Department

