

Subject: UNABLE TO LOCK/UNLOCK FUEL LID AND CHARGE LID	Bulletin No.: 09-045/25
	Last Issued : 12/03/2025

BULLETIN NOTES

APPLICABLE MODEL(S)/VINS

- 2019-2025 Mazda3 (Japan built) with VINS lower than JM1BP*****786603 (produced before April 3, 2025)
- 2019-2025 Mazda3 (Mexico built) with VINS lower than 3MZBP*****472100 (produced before April 3, 2025)
- 2020-2025 CX-30 with VINS lower than 3MVDM*****839632 (produced before April 3, 2025)
- 2022-2023 MX-30
- 2024 MX-30 (Canada spec) with VINS lower than JM1DM*****200940 (produced before April 20, 2024)
- 2023-2025 CX-50 with VINS lower than 7MMVA*****359390 (produced before April 3, 2025)
- 2024-2025 CX-90 with VINS lower than JM3KK*****240448 (produced before April 3, 2024)
- 2025 CX-70 with VINS lower than JM3KJ*****129041 (produced before April 3, 2024)

DESCRIPTION

Some customers may experience that the fuel lid and charge lid do not lock or unlock during door lock/unlock operation. This is caused by:

- Improper dimensional accuracy of the lid actuator lock mechanism
- Incomplete control logic in the R-ESU software

To eliminate this concern:

- The mold design of the lid actuator was modified.
- The control software of the R-ESU was revised.

Customers having this concern should have their vehicle repaired using the following repair procedure.

REPAIR PROCEDURE

1. Verify the customer concern.

- **For models not listed in the “Calibration Files Information” section**
 - From the first production unit to vehicles produced by December 13, 2024, replace the lid actuator (fuel side, charge side, or both) where the malfunction has been reported.
- **For models listed in the “Calibration Files Information” section** (The repair procedure varies depending on the production period)

CONSUMER NOTICE: The information and instructions in this bulletin are intended for use by skilled technicians. Mazda technicians utilize the proper tools/ equipment and take training to correctly and safely maintain Mazda vehicles. These instructions should not be performed by “do-it-yourselfers.” Customers should not assume this bulletin applies to their vehicle or that their vehicle will develop the described concern. To determine if the information applies, customers should contact their nearest authorized Mazda dealership. Mazda North American Operations reserves the right to alter the specifications and contents of this bulletin without obligation or advance notice. All rights reserved. No part of this bulletin may be reproduced in any form or by any means, electronic or mechanical--including photocopying and recording and the use of any kind of information storage and retrieval system ---without permission in writing.

- From the first production unit to vehicles produced by December 13, 2024, replace the lid actuator (fuel side, charge side, or both) and reprogram the R-ESU, then go on to Step 2.
- From December 13, 2024, to vehicles produced by April 2, 2025, only reprogram the R-ESU, then go on to Step 3.

2. Replace the lid actuator with a modified one according to the instructions on MGSS.

- For PHEV models, replace the actuator on the fuel side, the charging side, or both as necessary.
- For the charging side, refer to "Lid Lock Actuator (Charging) Removal Procedure."

NOTE □

- When replacing the fuel lid actuator, ensure that the connected harness is not twisted.
- If the harness is twisted, the filler lid may not lock properly.
- For reference see images below showing correct and twisted harness conditions.



3. Reprogram ECU with the Mazda Modular Diagnostic System (M-MDS), using Mazda Diagnostic and Repair Software (MDARS). Refer to MDARS ECU Reprogramming Procedure.

4. Clear any other DTC.

5. Verify the repair by starting the engine and confirming there is no CHECK ENGINE light ON or abnormal warning lights present.

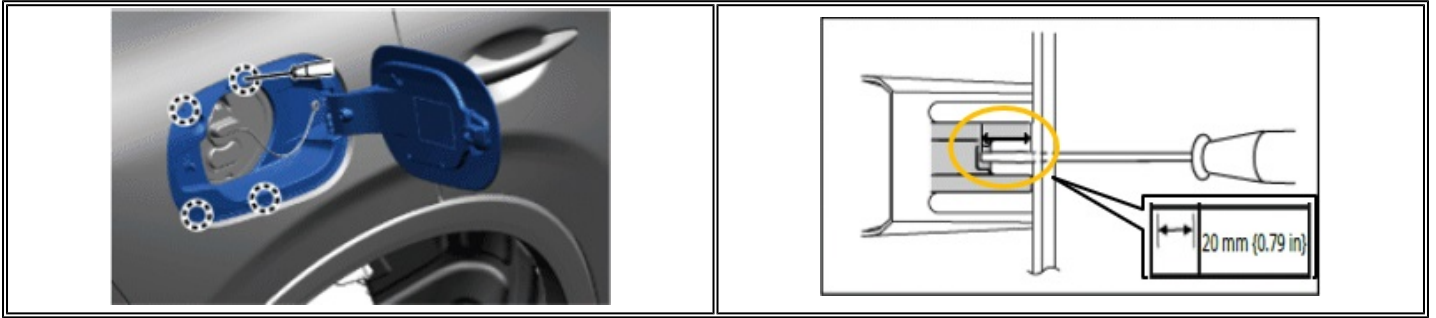
Lid Lock Actuator (Charging) Removal Procedure

1. Keep the charging lid open.
2. Disconnect the 12 V battery negative terminal.
3. Remove the grommets.

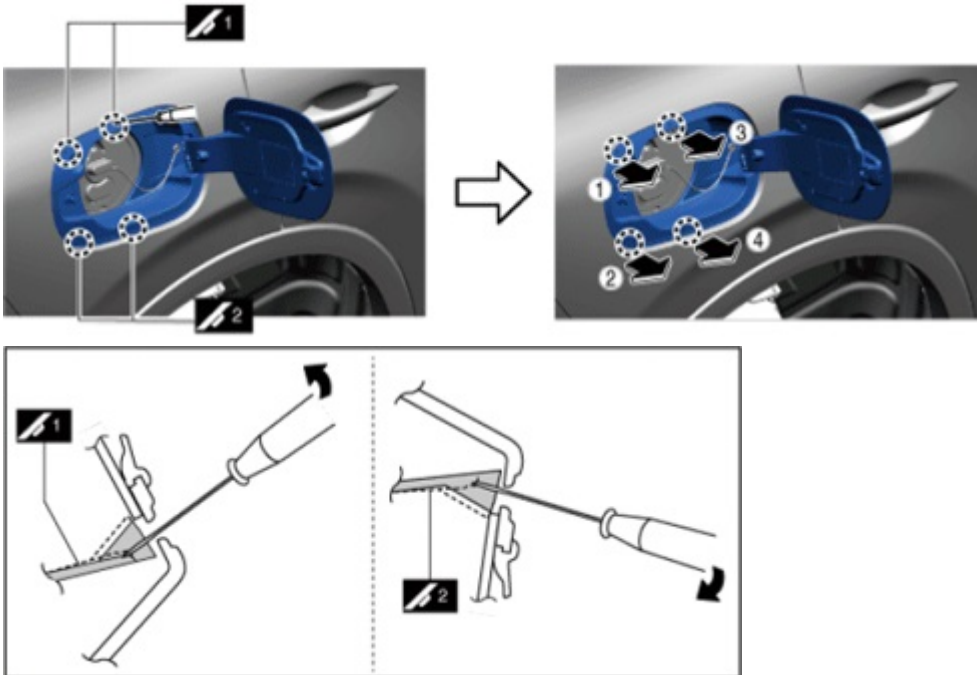


CONSUMER NOTICE: The information and instructions in this bulletin are intended for use by skilled technicians. Mazda technicians utilize the proper tools/ equipment and take training to correctly and safely maintain Mazda vehicles. These instructions should not be performed by "do-it-yourselfers." Customers should not assume this bulletin applies to their vehicle or that their vehicle will develop the described concern. To determine if the information applies, customers should contact their nearest authorized Mazda dealership. Mazda North American Operations reserves the right to alter the specifications and contents of this bulletin without obligation or advance notice. All rights reserved. No part of this bulletin may be reproduced in any form or by any means, electronic or mechanical---including photocopying and recording and the use of any kind of information storage and retrieval system ---without permission in writing.

4. Insert a screwdriver wrapped with protective tape into the position shown in the images.

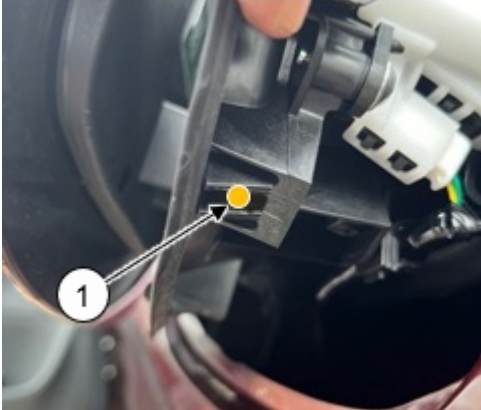


5. Disengage the fitting between the body and the charging lid box assembly as shown in the images.

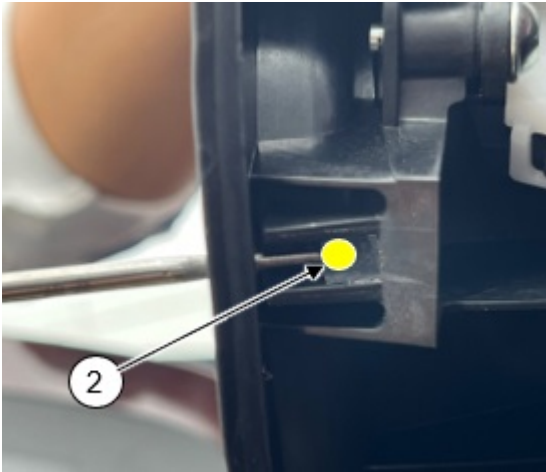


CONSUMER NOTICE: The information and instructions in this bulletin are intended for use by skilled technicians. Mazda technicians utilize the proper tools/ equipment and take training to correctly and safely maintain Mazda vehicles. These instructions should not be performed by "do-it-yourselfers." Customers should not assume this bulletin applies to their vehicle or that their vehicle will develop the described concern. To determine if the information applies, customers should contact their nearest authorized Mazda dealership. Mazda North American Operations reserves the right to alter the specifications and contents of this bulletin without obligation or advance notice. All rights reserved. No part of this bulletin may be reproduced in any form or by any means, electronic or mechanical---including photocopying and recording and the use of any kind of information storage and retrieval system ---without permission in writing.

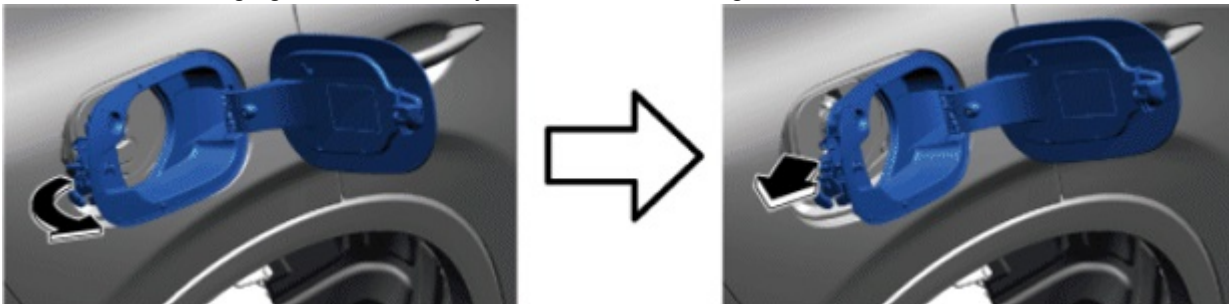
a. The claw has the shape shown in the figure. Move the area around the yellow dot toward the fuel port or charging port with a thin screwdriver to release the claw engagement. (The image shows the underside of the fuel lid. The charging lid has the same shape.)



b. When viewed from this angle, press the area around the yellow dot with a flathead screwdriver, applying pressure toward the back of the photo.



6. Remove the charging lid box assembly as shown in the images.



CONSUMER NOTICE: The information and instructions in this bulletin are intended for use by skilled technicians. Mazda technicians utilize the proper tools/ equipment and take training to correctly and safely maintain Mazda vehicles. These instructions should not be performed by "do-it-yourselfers." Customers should not assume this bulletin applies to their vehicle or that their vehicle will develop the described concern. To determine if the information applies, customers should contact their nearest authorized Mazda dealership. Mazda North American Operations reserves the right to alter the specifications and contents of this bulletin without obligation or advance notice. All rights reserved. No part of this bulletin may be reproduced in any form or by any means, electronic or mechanical---including photocopying and recording and the use of any kind of information storage and retrieval system ---without permission in writing.

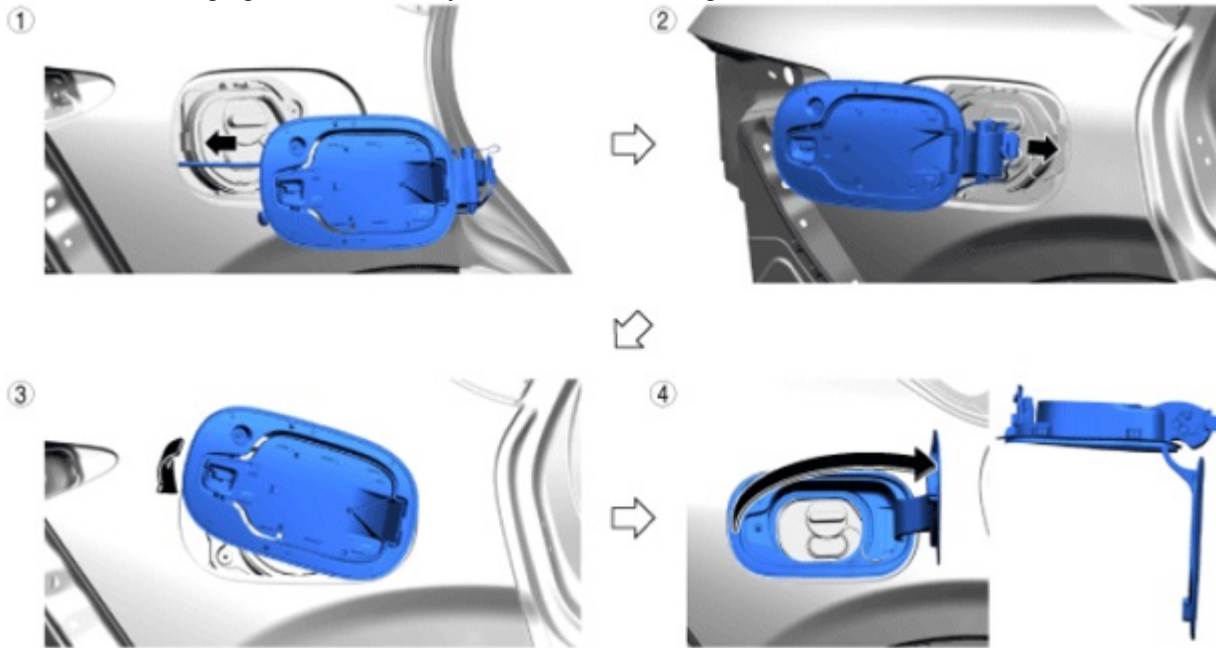


7. Replace the lid lock actuator.



CONSUMER NOTICE: The information and instructions in this bulletin are intended for use by skilled technicians. Mazda technicians utilize the proper tools/ equipment and take training to correctly and safely maintain Mazda vehicles. These instructions should not be performed by "do-it-yourselfers." Customers should not assume this bulletin applies to their vehicle or that their vehicle will develop the described concern. To determine if the information applies, customers should contact their nearest authorized Mazda dealership. Mazda North American Operations reserves the right to alter the specifications and contents of this bulletin without obligation or advance notice. All rights reserved. No part of this bulletin may be reproduced in any form or by any means, electronic or mechanical---including photocopying and recording and the use of any kind of information storage and retrieval system ---without permission in writing.

8. Install the charging lid box assembly as shown in the images.



CALIBRATION

ECU	Model	File Name (OLD)	File Name (NEW)	Actual time to update
ESU	MX-30	VC85-66S07-B	VC85-66S07-C	9 min
	MAZDA3	BHPD-66S07-B	BHPD-66S07-C	
	CX-30	VC85-66S07-B	VC85-66S07-C	
	CX-70	KMV6-66S07-C	KMV6-66S07-D	
	CX-90	KMV6-66S07-C	KMV6-66S07-D	

NOTE: This applies only to the reprogramming. Vehicles without the listed calibration files are simply not subject to the reprogramming.

PARTS INFORMATION

Parts Number	Description	Qty.	Notes
BCJH-56-890D	Lid lock actuator	1	MAZDA3, CX-30, CX-50, MX-30 (Fuel side)
DN4E-56-890B	Lid lock actuator	1 or 2	CX-70, CX-90, MX-30 (Charge side)

CONSUMER NOTICE: The information and instructions in this bulletin are intended for use by skilled technicians. Mazda technicians utilize the proper tools/ equipment and take training to correctly and safely maintain Mazda vehicles. These instructions should not be performed by "do-it-yourselfers." Customers should not assume this bulletin applies to their vehicle or that their vehicle will develop the described concern. To determine if the information applies, customers should contact their nearest authorized Mazda dealership. Mazda North American Operations reserves the right to alter the specifications and contents of this bulletin without obligation or advance notice. All rights reserved. No part of this bulletin may be reproduced in any form or by any means, electronic or mechanical---including photocopying and recording and the use of any kind of information storage and retrieval system ---without permission in writing.

WARRANTY INFORMATION**NOTE:**

- This warranty information applies only to verified customer complaints on vehicles eligible for warranty repair.
- This repair will be covered under Mazda's New Vehicle Limited Warranty term.
- Additional diagnostic time cannot be claimed for this repair.

[For models not listed in the "Calibration Files Information" section]

Warranty Type	A
Symptom Code	41
Damage Code	97
Part Number Main Cause	****-56-890* (Lid lock actuator)
Quantity	1
Operation Number / Labor Hours:	(Refer to the table below.)

NOTE: If both are replaced, please claim the other one as a related part.

Model	Variation1	Operation No.	Labor Hours (hrs.)
MAZDA3	2WD	XXX4JARX	1.1
	4WD	XXX4JBRX	1.1
CX-30	2WD	XXX4JDRX	1.1
	4WD	XXX4JERX	1.1
CX-50	-	XXX4JGRX	1.1
MX-30	Fuel side	XXX4JHRX	1.4
	Charging side	XXX4JJRX	0.3
	Both	XXX4JKRX	1.4

[For models listed in the "Calibration Files Information" section]

Warranty Type	A
Symptom Code	41
Damage Code	9W
Part Number Main Cause	5555-67-5Z0
Quantity	0
Operation Number / Labor Hours:	(Refer to the table below.)

NOTE: Claim Lid Lock Actuator (****-56-890*, Q'ty= 1 or 2) as related parts

CONSUMER NOTICE: The information and instructions in this bulletin are intended for use by skilled technicians. Mazda technicians utilize the proper tools/ equipment and take training to correctly and safely maintain Mazda vehicles. These instructions should not be performed by "do-it-yourselfers." Customers should not assume this bulletin applies to their vehicle or that their vehicle will develop the described concern. To determine if the information applies, customers should contact their nearest authorized Mazda dealership. Mazda North American Operations reserves the right to alter the specifications and contents of this bulletin without obligation or advance notice. All rights reserved. No part of this bulletin may be reproduced in any form or by any means, electronic or mechanical--including photocopying and recording and the use of any kind of information storage and retrieval system ---without permission in writing.

Model	Variation1	Operation No.	Labor Hours (hrs.)
MAZDA3	2WD	XXX4KARX	1.1
	4WD	XXX4KBRX	1.1
CX-30	2WD	XXX4KDRX	1.1
	4WD	XXX4KERX	1.1
CX-50	-	XXX4KGRX	1.1
MX-30	Fuel side	XXX4KHRX	1.5
	Charging side	XXX4KJRX	0.4
	Both	XXX4KKRX	1.5
CX-70	PHEV	XXX4KPRX	1.8
	H3T (inline 6)	XXX4KRRX	1.6
CX-90	PHEV	XXX4KYRX	1.9
	H3T (inline 6)	XXX4KZRX	1.7
All	Reprogramming only	XXX4KXFX	0.3

CONSUMER NOTICE: The information and instructions in this bulletin are intended for use by skilled technicians. Mazda technicians utilize the proper tools/ equipment and take training to correctly and safely maintain Mazda vehicles. These instructions should not be performed by "do-it-yourselfers." Customers should not assume this bulletin applies to their vehicle or that their vehicle will develop the described concern. To determine if the information applies, customers should contact their nearest authorized Mazda dealership. Mazda North American Operations reserves the right to alter the specifications and contents of this bulletin without obligation or advance notice. All rights reserved. No part of this bulletin may be reproduced in any form or by any means, electronic or mechanical---including photocopying and recording and the use of any kind of information storage and retrieval system ---without permission in writing.