



STAR ONLINE PUBLICATION



Case Number: S258A000022

Release Date: December 2025

Symptom/Vehicle Issue: No Audio Or No Sound From Door Speaker

Customer Complaint/Technician Observation: Customer complaints are related to door speakers inoperative or without sound.

Discussion: This procedure is specific to the door speakers in vehicles equipped with Premium 4 Audio System, sales code RGE Klipsch premium speaker system. There is a known issue with the speaker flex wire, where the flex wire can break at the terminal soldering area from speakers In a certain date range. The breakage may be hard to see with naked eye, so follow the diagnostic procedure below. Also see figure 2.

One of the Key symptoms observed with this issue is that when the corresponding door speakers stops producing audio, the Amp sets an open channel DTC.

- If the vehicle shows an **open-channel DTC** for door speaker, check the **date code on the back of the speaker**.
 - B146A-13 Speaker Open Front Left Door
 - B146F-13 Speaker Open Front Right Door
 - B1474-13 Speaker Open Rear Left Door
 - B1479-13 Speaker Open Rear Right Door

If the date code is earlier than 26725-W, classify it as a flex wire issue and order a replacement speaker. See Fig 1.

If the speaker has a newer date code, then continue with normal service diagnostic procedures.

This document does not authorize warranty repairs. This communication documents a record of past experiences. STAR Online does not provide any conclusions about what is wrong with the vehicle. Rather, it captures all previous cases known that appear to be similar or related to the vehicle symptom / condition. You are the expert, and you are responsible for deciding on the appropriate course of action.

Contact STAR Center, or your Technical Assistance Center Via TechConnect, eCONTACT or Service Library entry if no solution is found.



STAR ONLINE PUBLICATION



Suspect Identification PN# 68537408AA



Parts built with **Julian date before 26725** (DDYY), i.e., **before September 24, 2025**, are suspect

Fig 1

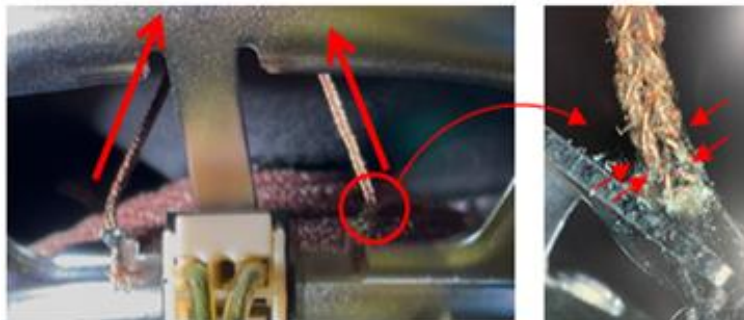


Fig 2

This document does not authorize warranty repairs. This communication documents a record of past experiences. STAR Online does not provide any conclusions about what is wrong with the vehicle. Rather, it captures all previous cases known that appear to be similar or related to the vehicle symptom / condition. You are the expert, and you are responsible for deciding on the appropriate course of action.

Contact STAR Center, or your Technical Assistance Center Via TechConnect, eCONTACT or Service Library entry if no solution is found.