

Field campaign

Topic	Software Update Window Short Drop Deletion Continental GT/GTC 26MY (SC25 /31)
Market area	Bentley: worldwide (2WBE),China 796 VW Import Comp. Ltd (Vico), Beijing (6796)
Brand	Bentley
Transaction No.	2078277/18
Campaign number	ED59
Note	
Type	
US code	

Vehicle data

26MY Continental GT / GTC

Sales types

Type	MY	Brand	Designation	Engine code	Gearbox code	Final drive code
Z23*	2026	E		*	*	*
Z24*	2026	E		*	*	*

Documents

Document name
master.xml
gt_glass_set_measurement_sheet.pdf
gtc_glass_set_measurement_sheet.pdf
v18sc2531vinlist.pdf

ED59

Transaction No.: 2078277
/18

Software Update | Window Short Drop Deletion | Continental GT/GTC | 26MY
(SC25/31)

Release date: Nov 24, 2025

Notes

▼ **Repair instructions**

Technical background

CAUTION

Please refer to all of the instructions within the Work section. The instructions MUST be followed in the exact order as detailed

Remedy

All instructions within the Work section must be conducted as detailed

Software update is available for the left and right hand rear door control modules - Diagnostic address 00BB Driver side and 00BC Passenger side

The software eliminates the rear window short drop function

Customer notification

Please ensure the software instructions within the Service campaign must be conducted at the nearest opportunity

Warranty

Warranty type	710 or 790
Damage service number	ED59
Damage code	00 66
Criterion ID	01

Time to conduct the Software Version Management (SVM) update - Rear door control modules

Labour operation code	01 51 00 00
Time	As per ODIS log Must not exceed 50 TU

Time to conduct initial measurement checks Profile (Y-Axis) and Interlock (X-Axis)

Labour operation code	64 38 02 99
Time	15 TU

CAUTION

The labour codes below must only be claimed if the Profile (Y-Axis) and Interlock (X-Axis) were out of specification (before and / or after the software update was conducted)

Time to conduct the front glass adjustment procedure

Labour operation code 64 40 15 00
Time 140 TU (per side)

Time to conduct the rear glass adjustment procedure

Labour operation code 64 75 15 00
Time 170 TU (per side)

Water leak test

Labour operation code 64 38 01 99 (Use this code when conducting the water leak test)
Time 20 TU

Additional Time Allowance

A 100TU allowance may be claimed only if a SVM update fails to complete successfully. This is intended to cover additional diagnostic or recovery work directly resulting from the failed update. It must not be used for unrelated delays or issues.

ODIS logs must be attached to a DISS ticket for evidence of failure. Claims without valid documentation will be rejected. Warranty Adjudicators will review associated ODIS logs and DISS queries to determine actual software update time.

Parts

Not applicable

Parts supply

NOTICE

Should one or both of the measurements not be within specification the operative must refer to Rep.Gr 64 - Rear door drop glass - To adjust and conduct the front and rear glass adjustment procedure for the affected side left and / or right hand side to completion (all steps)

NOTICE

Adjustment of all side glass requires the interior trim to be removed. Refer to "Rear quarter trim – To remove and fit". Rep. Gr. 70



To carry out the "Rear quarter trim – To remove and fit". Rep. Gr. 70 procedure, the following one-time-use parts must be replaced during the reinstallation:

N 989 244 01 x4 (Front seat belt slider bar fixing x2 each side)

N 989 244 01 x2 (Rear seat belt fixing x1 each side)

Refer to ETKA parts catalogue

Parts despatch control

Not applicable

Technical background

CAUTION

Please refer to all of the instructions within the Work section. The instructions MUST be followed in the exact order as detailed

Check

If the vehicle is not already listed as repaired in "Repair history" (in Elsa pro), check for the presence of the blue paint completion mark as shown within the Identification section

If neither are evident please conduct the instructions within the Work section to completion.

Parts

Not applicable

Work

CAUTION

Ensure the vehicle is connected to a suitable 12V Lithium Ion battery charger before conducting any work

Section 1 – Initial Glass Set Measurements

NOTICE

Conduct initial glass set measurements and record the results in the model specific measurement document attached (see documents section). After completing the initial measurements, DO NOT make any adjustments until after the software update has been completed

CAUTION

When completing the initial glass set measurements strictly adhere to the instructions in section 2



When completing measurements on Continental GTC models, complete a set of measurements with both the roof up and the roof down, as per the attached glass set measurement sheet

Section 2 – Glass Set Measurement Instructions

CAUTION

When completing the glass set measurement procedure, strictly adhere to the instructions below

If unsure about the measurement process follow the video on eAcademy or raise a full technical DISS query.

To eliminate confusion about the usage of WT10549/3 and the Y axis profile measurement between the front and rear windows and how to correctly read/enter the measurements in the tables, please refer to the below images to aid with accurate reading of the Y axis profile when using WT10549/3.

Window Parallel

When the window is parallel take the 2mm step from the tool and minus the 2mm gap between front window and tool = -0mm (as shown in figure 1)

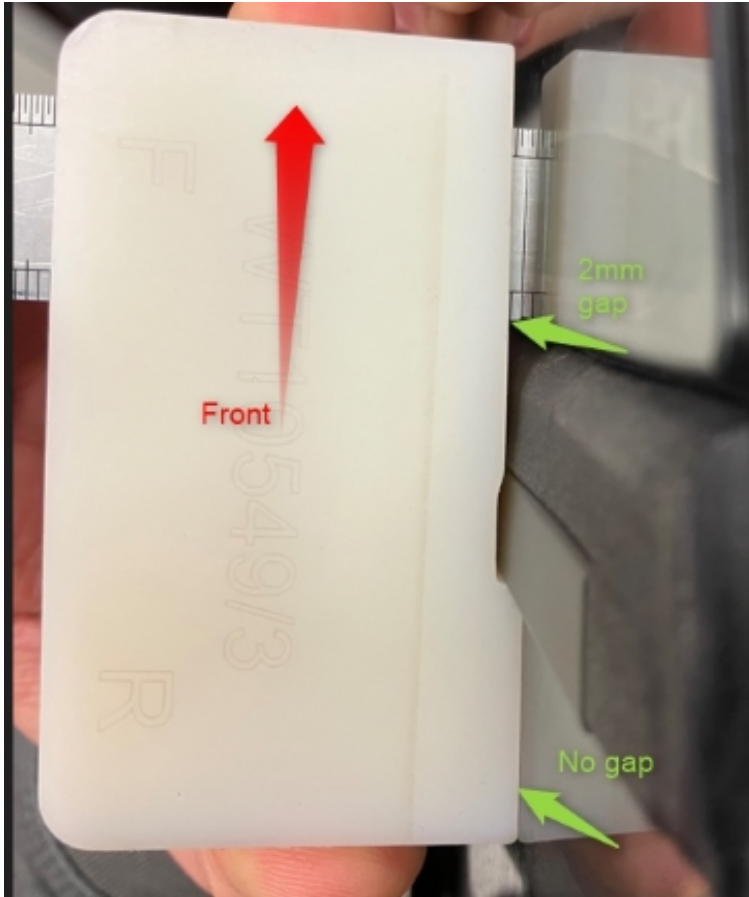


Figure 1

When the rear window is 0mm inboard from the front glass and the windows are parallel, the measurement written as 0mm (figure 2)

Profile (Y-Axis) Roof Down	Vehicle Position	Dimension -X-	Before adjustment
4 50mm from top of division bar	Front drop glass to rear quarter glass	+0 mm / - 2 mm	0mm

Figure 2

Rear Window Inboard

When the rear window is inboard and there is a 2mm step from the tool, when there is no gap between either window and tool (figure 3), the recorded measurement should be -2mm (figure 4)

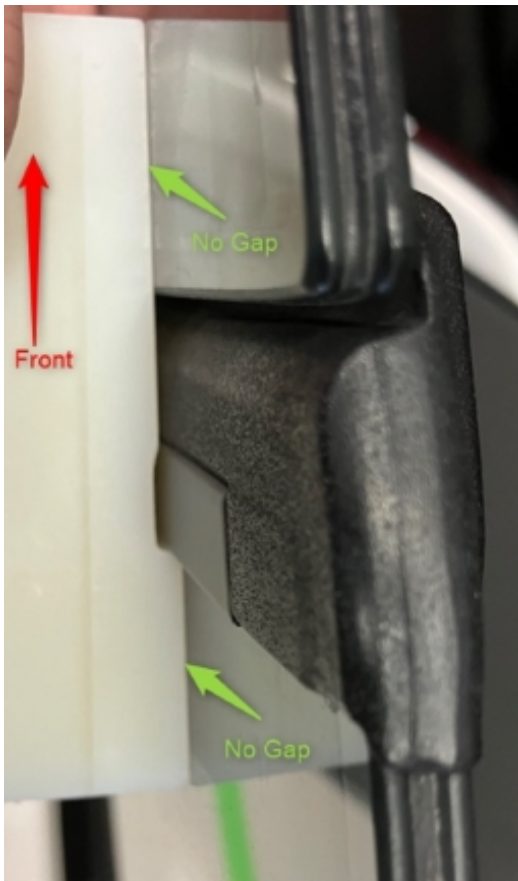


Figure 3

Profile (Y-Axis) Roof Down	Vehicle Position	Dimension -X-	Before adjustment
4 50mm from top of division bar	Front drop glass to rear quarter glass	+0 mm / - 2 mm	-2mm

Figure 4

Rear Window Too Far Inboard

When the rear window is inboard and there is a 2mm step from the tool as well as an additional 1.5mm gap to the window (figure 5), the recorded measurement should be -3.5mm (figure 6).

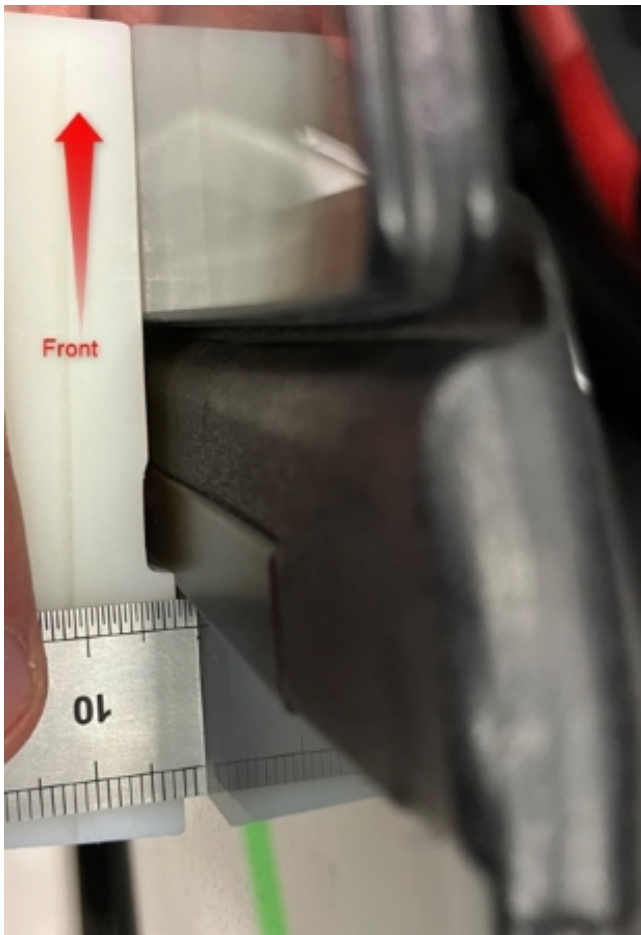


Figure 5

Profile (Y-Axis) Roof Down	Vehicle Position	Dimension -X-	Before adjustment
4 50mm from top of division bar	Front drop glass to rear quarter glass	+0 mm / - 2 mm	-3.5mm

Figure 6

If the tool (WT10549/3) does not sit flush against the rear window then this shows rear window is more than 2mm inboard (more than -2mm), check this by holding the tool on the front window and measuring gap between the rear glass and the tool (as shown in figure 7)

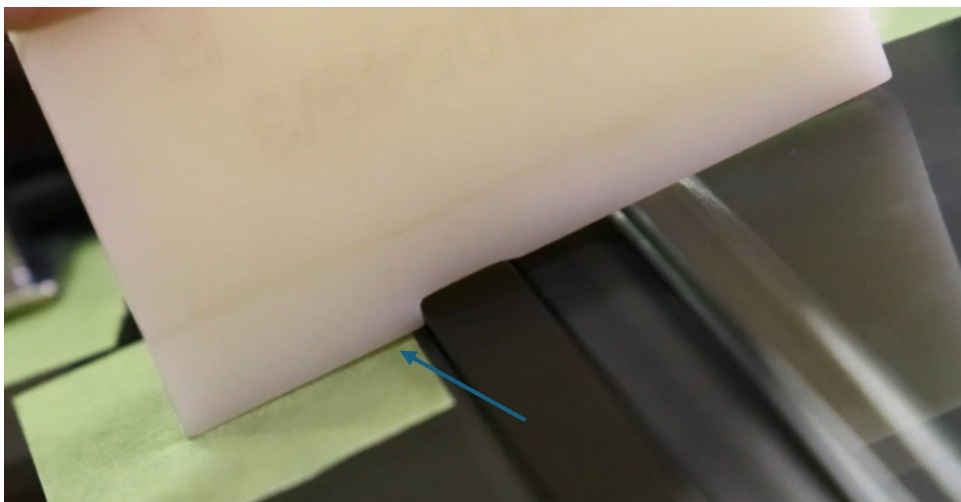


Figure 7

Further explanation can be found in the videos shown in Figure 8, which can be found on eAcademy Digital Learning Hub.

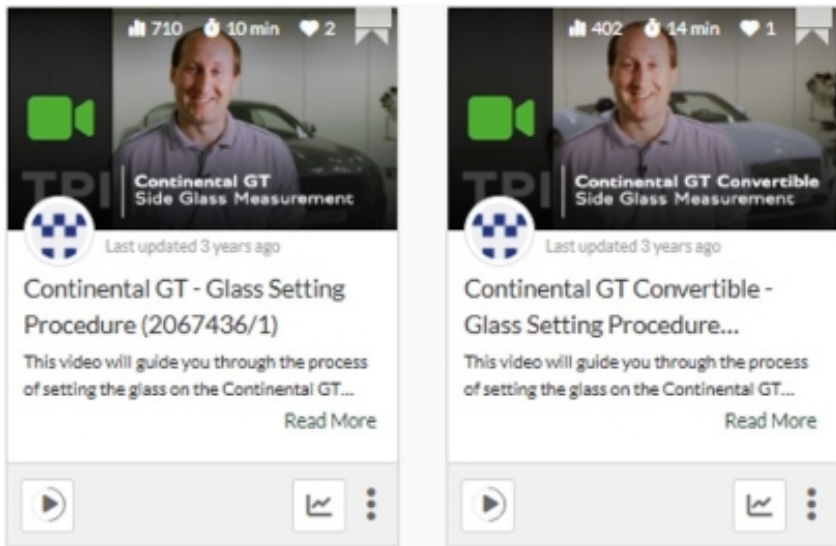


Figure 8

Section 3 - Software update to the rear door control modules 00BB and 00BC - Short drop function elimination

CAUTION

ONLY Chargers that meet the approved specification on the Mandatory Equipment List (available on the Bentley Hub) **MUST** be used.

- The charger must be set to a mode where a **MINIMUM** of 90a is supplied to the battery during the process. Typically, this is known as 'Power Supply Mode' or 'DIAG+ Mode'.
- A voltage of exactly 14.8v must be set and maintained throughout the process.
- Please refer to the manual to ensure that these requirements are met before beginning any SVM update



The following software update eliminates the rear window short drop function

1) Preparation before update

- Conduct a full guided fault find of the vehicle.



If a 'Check installation list' pop-up appears, select 'close' (Figure 9)



Figure 9

Referring to TPI 2075920, address any unknown faults **BEFORE** conducting any of the below updates.

2) Referring to Figure 10 - Within the Special functions tab - Select SVM - Code Input (Point A)

• Select Perform test (Point B)

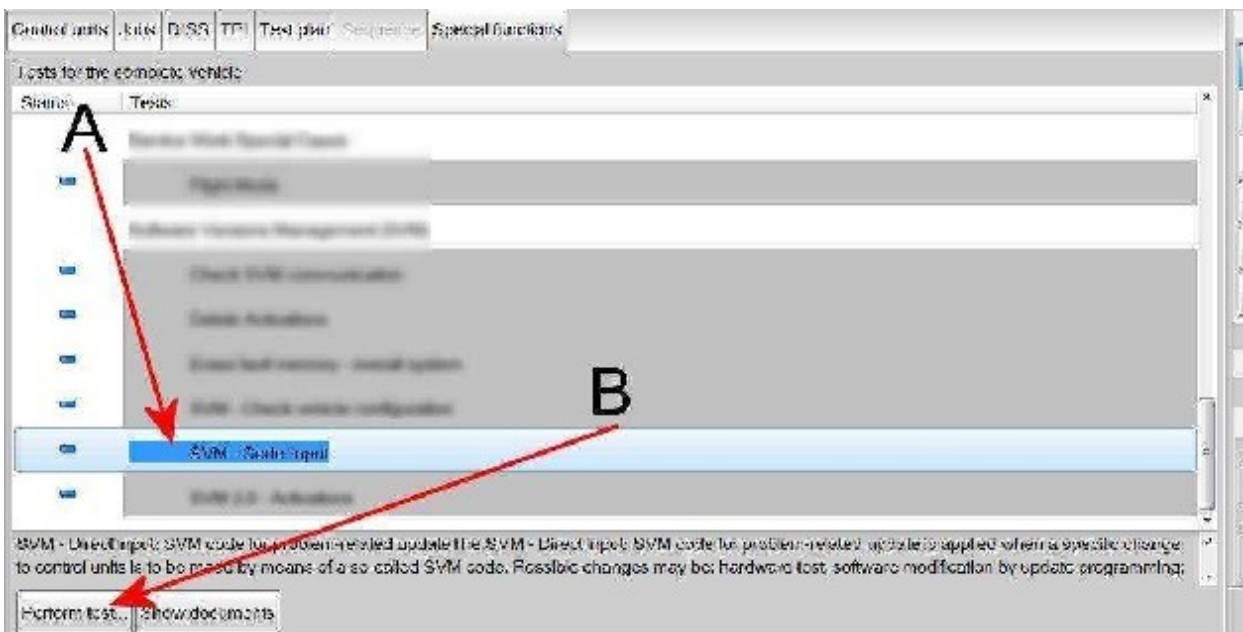


Figure 10

3) Referring to Figure 11 - Enter the SVM code **372WDD02**

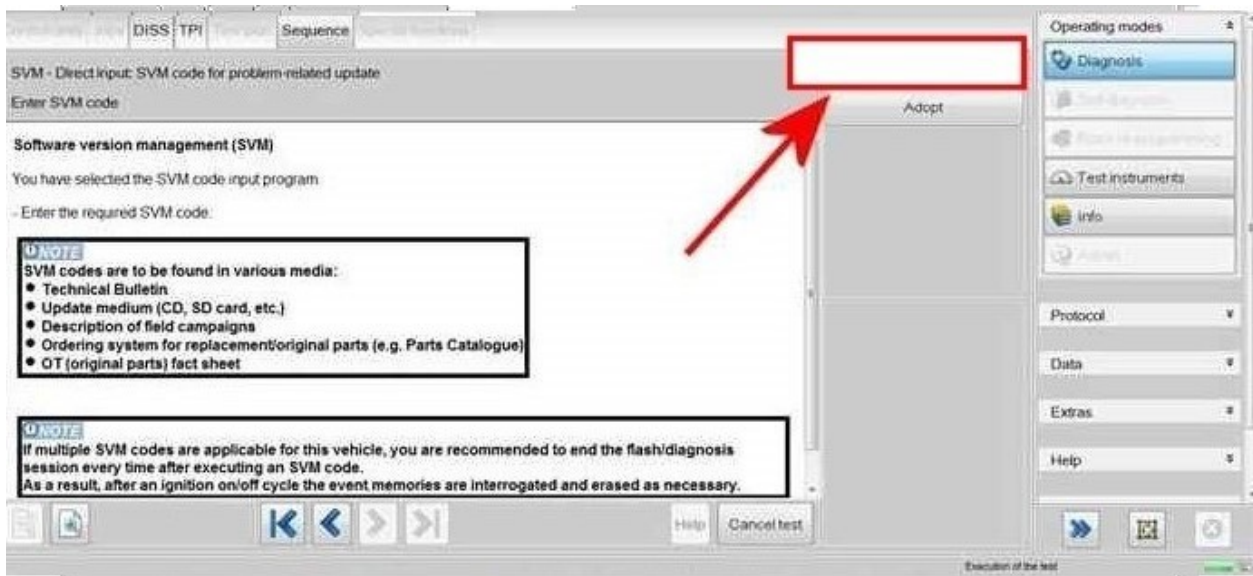


Figure 11

4) The control modules will automatically be updated one by one, starting with 00BB (Driver rear) and then 00BC (passenger rear)



Upon successful completion you will get a failure message of 8113 SVM Error

NOTICE

If you get any other error code, such as 8118, please refer to TPI 2078962

5) On completion open the doors and ensure that the rear windows no longer drop.

6) Switch off the ignition

- Remove the diagnostic interface from the OBD port
- Switch off and remove the battery charger from the vehicle
- Close the bonnet, boot and all doors
- Lock the vehicle
- Wait 5 minutes to allow the vehicle to go into bus silence
- When 5 minutes has elapsed, unlock the vehicle and open the driver's door
- Switch on the ignition

7) Once the software update has been conducted continue with the remaining instructions

Hint: The remaining instructions MUST be conducted regardless if adjustments were conducted or not

8) Referring to Rep.Gr 64 - Measure and record the points as detailed below on the left and right hand side Profile (Y-Axis) and Interlock (X-Axis).



CAUTION

Strictly adhere to the instructions in section 2 when completing the glass set measurements after the

software update has been completed.

Note: Should the measurements for the left and right hand side be within specification please go to step 11 and follow all remaining steps until completion

Or

 NOTICE

Should one or both of the measurements not be within specification the operative must refer to Rep.Gr 64 - Rear door drop glass - To adjust and conduct the front and rear glass adjustment procedure for the affected side left and / or right hand side to completion (all steps) and record a final measurement in the attached document

 CAUTION


All measurements must be recorded in the attached measurement documentation and saved as they will be required to be attached to a non-technical DISS query at the end of the procedure



FAILURE TO ATTACH THE MEASUREMENTS TO THE DISS WILL RESULT IN NON PAYMENT OF THE WARRANTY CLAIM

Note: Once the adjustment has been conducted please go to step 10 and follow all remaining steps until completion

9) VERY IMPORTANT - Referring to Rep.Gr 64 - Side glass - To initialise

 CAUTION

When conducting step 11 extra care must be taken to ensure the interior trim is suitably protected, any water which enters the vehicle due to a leak must be dried / cleaned immediately. Ensure all windows, sunroof and convertible roof (where applicable) are fully closed before conducting step 11

10) Conduct a water leak check to ensure that water is not leaking into the vehicles interior - Water leaks must be resolved before handing over the vehicle to the customer

11) Conduct the PDI road test to check for any wind noise related issues

 NOTICE

Should the vehicle fail the water leak check or a wind noise check, please raise a full technical DISS query

12) Upon successful completion of the PDI road test, raise a non-technical DISS query titled SC25/30 X and Y Axis measurement feedback ensuring the following is attached

- Online ODIS log
- A completed model specific measurement table

13) Referring to the Identification section - Apply a blue paint completion mark on the engine partition brace (Figure 12)

Identification

Blue paint completion mark on the engine partition brace



Figure 12

▲ Repair instructions ▲ Notes

Side glass measurements GT 25/26MY					
Interlock (Z-Axis)	Vehicle Position	Dimension -X-	Before SVM	After SVM	After adjustment (if required)
A 50 mm from division bar	Front quarter glass	7.5 mm \pm 1 mm			
B 150 mm from division bar	Front of door drop glass	8 mm \pm 1 mm			
C 50 mm from rear of door drop glass	Rear of door drop glass	8 mm \pm 1 mm			
D 50 mm from rear drop glass division bar	Front of rear quarter glass	8 mm \pm 1 mm			
E 50 mm from rearmost section of rear drop glass	Rear of rear quarter glass	8 mm \pm 1 mm			
Interlock (X-Axis)	Vehicle Position	Dimension -X-	Before SVM	After SVM	After adjustment (if required)
4 50 mm from the top of the window	Rear door quarter glass strip to front door drop glass edge	11 mm \pm 1 mm			
5 50 mm from the waistrail seal	Rear door quarter glass strip to front door drop glass edge	11 mm \pm 1 mm			
Profile (Y-Axis)	Vehicle Position	Dimension -X-	Before SVM	After SVM	After adjustment (if required)
1 50 mm from division bar	Front quarter glass	10 mm \pm 1 mm			
2 150 mm from division bar	Front of door drop glass	10 mm \pm 2 mm			
3 50 mm from rear of door drop glass	Rear of door drop glass	10 mm \pm 2 mm			
6 50 mm from rear drop glass division bar	Front of rear quarter glass	10 mm \pm 2 mm			
7 50 mm from rearmost section of rear drop glass	Rear of rear quarter glass	10 mm \pm 2 mm			
8 50mm forwards of rear of front drop glass (waist rail gap)	Rear of door drop glass	5mm \pm 1mm			
9 50mm rearward of front of rear drop glass (waist rail gap)	Front of rear quarter glass	5mm \pm 1mm			
Profile (Y-Axis)	Vehicle Position	Dimension -X-	Before SVM	After SVM	After adjustment (if required)
4 50mm from top of division bar	Front drop glass to rear quarter glass	+0 mm / - 2.5 mm			
5 50mm from bottom of division bar	Front drop glass to rear quarter glass	+0 mm / - 2 mm			

Side glass measurements GTC 25/26MY					
Interlock (Z-Axis)	Vehicle Position	Dimension -X-	Before SVM	After SVM	After adjustment (if required)
1 50 mm from division bar	Front quarter glass	7.5 mm ± 1 mm			
2 100 mm from division bar	Front of door drop glass	8.5 mm ± 1 mm			
3 50 mm from rear of door drop glass	Rear of door drop glass	8.5 mm ± 1 mm			
6 50 mm from rear drop glass division bar	Front of rear quarter glass	8.5 mm ± 1 mm			
7 100 mm from where the hood meets the brightware	Rear of rear quarter glass	10 — 16mm			
Interlock (X-Axis) Roof Up	Vehicle Position	Dimension -X-	Before SVM	After SVM	After adjustment (if required)
4 50 mm from the top of the window	Rear door quarter glass strip to front door drop glass edge	11 mm ± 1 mm			
5 50 mm from the waistrail seal	Rear door quarter glass strip to front door drop glass edge	11 mm ± 1 mm			
Interlock (X-Axis) Roof Down	Vehicle Position	Dimension -X-	Before SVM	After SVM	After adjustment (if required)
4 50 mm from the top of the window	Rear door quarter glass strip to front door drop glass edge	11 mm ± 1 mm			
5 50 mm from the waistrail seal	Rear door quarter glass strip to front door drop glass edge	11 mm ± 1 mm			
Profile (Y-Axis)	Vehicle Position	Dimension -X-	Before SVM	After SVM	After adjustment (if required)
1 50 mm from division bar	Front quarter glass	10 mm ± 1 mm			
2 100 mm from division bar	Front of door drop glass	14 mm ± 2 mm			
8 50mm forwards of rear of front drop glass (waist rail gap)	Rear of door drop glass	5mm ± 1mm			
9 50mm rearward of front of rear drop glass (waist rail gap)	Front of rear quarter glass	5mm ± 1mm			
Profile (Y-Axis) Roof Up	Vehicle Position	Dimension -X-	Before SVM	After SVM	After adjustment (if required)
4 50mm from top of division bar	Front drop glass to rear quarter glass	+0 mm / - 2.5 mm			
5 50mm from bottom of division bar	Front drop glass to rear quarter glass	+0 mm / - 2 mm			
Profile (Y-Axis) Roof Down	Vehicle Position	Dimension -X-	Before SVM	After SVM	After adjustment (if required)
4 50mm from top of division bar	Front drop glass to rear quarter glass	+0 mm / - 2.5 mm			
5 50mm from bottom of division bar	Front drop glass to rear quarter glass	+0 mm / - 2 mm			

SCBCB13S2TC027572	SCBDP4ZGXTC027443	SCBCU13S4TC027454
SCBCB13S8TC027561	SCBDP4ZGXTC027541	SCBDM33S1TC027153
SCBCM13S0TC027516	SCBCB13S1TC027496	SCBDM33S1TC027461
SCBCN13S6TC027520	SCBCB13S9TC027326	SCBDM33S2TC027453
SCBCN13S7TC027350	SCBCM13S0TC027502	SCBDM33S6TC027407
SCBCN13S9TC027429	SCBCM13S1TC027458	SCBDN33S0TC027450
SCBCN1ZGXTC027538	SCBCM13S2TC027484	SCBDN33S1TC027120
SCBCP2ZG4TC027535	SCBCM13S3TC027459	SCBDN33S2TC027465
SCBDH33S0TC027522	SCBCM13S7TC027500	SCBDN33S9TC027415
SCBDP4ZG1TC027511	SCBCP2ZG5TC027494	SCBDP4ZG3TC027431
SCBCB13S2TC027524	SCBCU13S2TC027470	SCBDP4ZG4TC027468
SCBCB13S8TC027530	SCBCU13S4TC027504	SCBCB13S1TC027451
SCBCC13S5TC027322	SCBDM33S3TC027476	SCBCD13S3TC027445
SCBCM13S3TC027526	SCBDM33S8TC027487	SCBCJ13S3TC027440
SCBCM13S3TC027543	SCBDM33SXTTC027457	SCBCM13S2TC027405
SCBCM13S4TC027471	SCBDP4ZGXTC027491	SCBCM13S2TC027436
SCBCM13S4TC027549	SCBCB13S1TC027479	SCBCM13S4TC027406
SCBCM13S7TC027531	SCBCB13S4TC027492	SCBCM13S4TC027423
SCBCM13SXTTC027510	SCBCB13S5TC027288	SCBCM13S5TC027317
SCBCM1ZG1TC027527	SCBCB13S9TC027441	SCBCM1ZG7TC027449
SCBCN13S1TC027490	SCBCM13S0TC027466	SCBCN13S0TC027335
SCBCN1ZG1TC027508	SCBCM13S5TC027463	SCBCN13S0TC027402
SCBCR2ZG0TC027512	SCBCM13S6TC027455	SCBCN13S0TC027416
SCBCR2ZG6TC027448	SCBCM13S6TC027486	SCBCN13S1TC027425
SCBCU13S1TC027475	SCBCM13SXTTC027474	SCBCN13S2TC027403
SCBDC33S7TC027533	SCBCM1ZG6TC027488	SCBCN13S9TC027396
SCBDM33S6TC027519	SCBCN13S2TC027319	SCBCN1ZG1TC027444
SCBDM33S7TC027495	SCBCN13S3TC027426	SCBCN1ZG3TC027462
SCBDN33S1TC027537	SCBCR2ZG2TC027432	SCBCN1ZG4TC027194
SCBDN33S6TC027503	SCBCR2ZG4TC027478	SCBCR2ZG4TC027433
SCBDP4ZG4TC027499	SCBCR2ZG6TC027482	SCBDM33S2TC027386

SCBDM33S3TC027400	SCBCN13S6TC027209	SCBCB13S3TC027340
SCBDN33S0TC027352	SCBCN13S9TC027382	SCBCB13S5TC027274
SCBDN3ZGXTTC027393	SCBCN13SXTTC027388	SCBCD13S9TC027286
SCBDP4ZG1TC027251	SCBCN13SXTTC027391	SCBCG13S6TC027267
SCBDP4ZG1TC027427	SCBDH33S8TC027378	SCBCM13S1TC026827
SCBCJ13S1TC027369	SCBDM33S0TC027242	SCBCM13S1TC027220
SCBCJ13SXTTC027385	SCBDM33SXTTC027085	SCBCM13S2TC027291
SCBCM13S0TC027399	SCBDN33S7TC027364	SCBCM13S2TC027341
SCBCM13S0TC027418	SCBDN3ZG8TC027358	SCBCM13S4TC027311
SCBCM13S2TC027422	SCBDP4ZG2TC027307	SCBCM13S5TC027334
SCBCM13S4TC027390	SCBCD13S9TC027272	SCBCM1ZG5TC027126
SCBCM13S4TC027437	SCBCJ13S1TC027355	SCBCN13SXTTC027343
SCBCM13SXTTC027412	SCBCJ1ZG5TC027295	SCBCN1ZGXTTC027250
SCBCN13S1TC027361	SCBCM13S2TC027324	SCBDM33S0TC027337
SCBCN13S2TC027420	SCBCM13S2TC027338	SCBDM33S4TC027261
SCBCN13S5TC027315	SCBCM13S4TC027356	SCBDM33S5TC027320
SCBCN13S5TC027413	SCBCM13S9TC027353	SCBDN33S3TC027216
SCBCN13S7TC027428	SCBCM13SXTTC027359	SCBCB13S8TC027284
SCBCB13S2TC027376	SCBCM1ZG0TC027373	SCBCB13SXTTC027187
SCBCB13S6TC027381	SCBCM1ZG6TC027166	SCBCB13SXTTC027304
SCBCB13S9TC027309	SCBCN13S2TC027367	SCBCM13S1TC027301
SCBCB13S9TC027410	SCBCN13S2TC027370	SCBCM13S4TC027244
SCBCB13SXTTC027366	SCBCN13S5TC027332	SCBCM13S6TC027293
SCBCJ13S7TC027375	SCBCN13S5TC027346	SCBCM13S7TC027299
SCBCM13S1TC027394	SCBCN13S7TC027347	SCBCM13S9TC027269
SCBCM13S5TC027379	SCBCU13S8TC027196	SCBCN13S1TC027263
SCBCM13S7TC027349	SCBDM33S0TC027371	SCBCN13S2TC027305
SCBCM13S7TC027397	SCBDM33S8TC027344	SCBCN13S3TC027278
SCBCM13S9TC027384	SCBDN33S7TC027297	SCBCN1ZG5TC027138
SCBCM13SXTTC027362	SCBDR4ZG7TC027183	SCBCU13S6TC027276
SCBCN13S3TC027409	SCBCB13S0TC027313	SCBDM33S8TC027280

SCBDN33S9TC027270	SCBDR4ZG1TC027146	SCBCM13S1TC027119
SCBDP4ZG0TC027080	SCBCB13SXTTC027223	SCBCM13S2TC027159
SCBDR4ZG2TC027172	SCBCM13S5TC027222	SCBCM13S2TC027162
SCBCB13S0TC027246	SCBCM13S6TC027231	SCBCM13S5TC027107
SCBCB13S1TC027238	SCBCN13S1TC027229	SCBCM1ZG4TC027148
SCBCB13S4TC027248	SCBCN13S7TC027218	SCBCM1ZG5TC027076
SCBCJ13S9TC027152	SCBCN13S9TC027205	SCBCM1ZG7TC027063
SCBCM13S9TC027255	SCBDJ33SXTTC027175	SCBCN13S7TC027140
SCBCN13SXTTC027259	SCBDM33S6TC027164	SCBCN13SXTTC027102
SCBCP2ZG7TC027030	SCBDM33SXTTC027104	SCBCN13SXTTC027116
SCBCP2ZG9TC027028	SCBDN33S7TC027199	SCBCR2ZG8TC027015
SCBCU13S1TC027265	SCBDP4ZG0TC027113	SCBDM33S0TC026348
SCBDM33S2TC027128	SCBDP4ZG3TC027168	SCBDM33S3TC027137
SCBDN33S2TC027207	SCBDP4ZG4TC027180	SCBDM33S5TC027088
SCBDP4ZG5TC026877	SCBDP4ZG5TC026989	SCBDM33S7TC027075
SCBCB13S3TC027211	SCBCB13S4TC027198	SCBDM3ZG1TC027091
SCBCB13S7TC027227	SCBCM13S0TC027189	SCBDN33S1TC027117
SCBCD13S8TC027215	SCBCM13S4TC027132	SCBDN33S4TC027144
SCBCJ13S1TC027257	SCBCM13S5TC027155	SCBDP4ZG0TC027130
SCBCM13S1TC027203	SCBCM13S8TC027182	SCBDP4ZG5TC027141
SCBCM13S5TC027236	SCBCM1ZG0TC027177	SCBCM13S1TC027105
SCBCM13S5TC027253	SCBCM1ZG3TC027173	SCBCM13S3TC027039
SCBCM13S7TC027240	SCBCM1ZG8TC027170	SCBCM13S7TC027142
SCBCM13S8TC027201	SCBCN13S7TC027185	SCBCN13S7TC027087
SCBCM13SXTTC027233	SCBCN13S9TC027060	SCBDN33S4TC027094
SCBCM1ZG2TC027178	SCBCP2ZG8TC026985	SCBDP4ZG4TC026952
SCBCN1ZG4TC027213	SCBDM33S0TC027161	SCBDP4ZG5TC026913
SCBDM33S3TC027221	SCBDM33S9TC027157	SCBCM13S1TC026648
SCBDM33S6TC027133	SCBDP4ZG5TC027124	SCBCM13S6TC026922
SCBDP4ZG0TC027046	SCBDR4ZG3TC027150	SCBCM13S6TC027066
SCBDP4ZG0TC027225	SCBCJ13S9TC027135	SCBCM13S7TC027092

SCBCM13SXTC027099	SCBCN13S8TC026983	SCBDN33SXTC027021
SCBCM1ZG4TC027053	SCBCN13S9TC026698	SCBDP4ZG0TC026978
SCBCN13S1TC027005	SCBCN1ZG3TC026621	SCBDP4ZG0TC027032
SCBCN13S3TC026955	SCBCP2ZG1TC026570	SCBDP4ZG1TC027038
SCBCN13S5TC027041	SCBCP2ZG2TC027078	SCBDP4ZG2TC026917
SCBCN13S8TC027096	SCBCP2ZG3TC026876	SCBDP4ZG3TC027025
SCBCN13S9TC027110	SCBCP2ZG3TC026974	SCBDP4ZG6TC026936
SCBCP2ZG0TC026933	SCBCP2ZG3TC027008	SCBDP4ZG6TC027052
SCBCP2ZG1TC026777	SCBCP2ZG6TC026970	SCBDP4ZG8TC026954
SCBCP2ZG4TC026868	SCBCR2ZG2TC027074	SCBDR4ZG7TC026969
SCBCR2ZG9TC027069	SCBCR2ZG4TC027013	SCBCM13S3TC026909
SCBCU13S1TC027122	SCBCR2ZG5TC026811	SCBCM13S7TC026105
SCBDM33S2TC027064	SCBDP4ZG1TC027010	SCBCM13S8TC026968
SCBDM33S6TC027097	SCBDP4ZG7TC026900	SCBCM13S8TC027019
SCBDN33SXTC027049	SCBDP4ZG8TC027067	SCBCM13SXTC026695
SCBDP4ZG4TC027082	SCBDR4ZG1TC026921	SCBCN13S7TC026957
SCBDP4ZG7TC026864	SCBDR4ZG4TC026993	SCBCN13SXTC027018
SCBDP4ZG7TC027058	SCBDR4ZG4TC027061	SCBCN1ZGXTTC027023
SCBDP4ZGXTTC027071	SCBCM13S2TC027050	SCBCP2ZG0TC027001
SCBDR4ZG1TC027101	SCBCM13S8TC027036	SCBCP2ZG1TC026844
SCBDR4ZG3TC027004	SCBCM1ZG1TC027057	SCBCP2ZG2TC026951
SCBDR4ZG7TC026910	SCBCN13S8TC027051	SCBCP2ZG4TC026904
SCBCD13S1TC026987	SCBCP2ZG2TC027016	SCBCP2ZG4TC027003
SCBCM13S1TC027072	SCBCP2ZG4TC026997	SCBCP2ZG5TC026992
SCBCM13S2TC027081	SCBCP2ZG5TC027026	SCBCP2ZG6TC026550
SCBCM13S3TC027042	SCBCP2ZG9TC026851	SCBCP2ZG7TC026945
SCBCM13S7TC026962	SCBCU13S5TC027012	SCBCP2ZG8TC026999
SCBCM13S8TC026923	SCBDB33S6TC026568	SCBCP2ZG9TC026994
SCBCM13S8TC027084	SCBDM33S1TC027055	SCBCP2ZG9TC027000
SCBCM13S9TC026624	SCBDM33S7TC027044	SCBCP2ZG9TC027031
SCBCM1ZG3TC027089	SCBDN33S5TC026956	SCBCR13S1TC026960

SCBCR2ZG0TC026862	SCBCP2ZG7TC026976	SCBDP4ZG1TC026875
SCBCR2ZG0TC027011	SCBCP2ZG8TC026937	SCBDP4ZG3TC026845
SCBCR2ZG5TC026873	SCBCP2ZG9TC026980	SCBDP4ZG5TC026880
SCBCR2ZG5TC026940	SCBCP2ZGXTTC026972	SCBDP4ZG6TC026919
SCBDN33S3TC026986	SCBCR13S1TC026912	SCBDP4ZG8TC026789
SCBDP4ZG0TC026897	SCBCR2ZG6TC026963	SCBDP4ZG9TC026929
SCBDP4ZG1TC026925	SCBCR2ZG7TC025272	SCBDR4ZG3TC026869
SCBDP4ZG1TC026939	SCBCU13S5TC026930	SCBDR4ZG4TC026833
SCBDP4ZG2TC026996	SCBDP4ZG2TC026819	SCBCM13S2TC026884
SCBDP4ZG3TC026991	SCBDP4ZG3TC026814	SCBCM13S4TC025963
SCBDP4ZG4TC027034	SCBDP4ZG5TC026958	SCBCM13S7TC026895
SCBDP4ZG7TC026959	SCBDP4ZG6TC026399	SCBCM1ZG0TC026708
SCBDP4ZG8TC026856	SCBDP4ZG6TC026872	SCBCN13S2TC026803
SCBDP4ZGXTTC027006	SCBDP4ZG8TC026842	SCBCN13S5TC026861
SCBDR4ZG0TC026988	SCBDP4ZG9TC026932	SCBCN13S6TC026898
SCBDR4ZG1TC026840	SCBDR33S9TC026964	SCBCN13S9TC026345
SCBDR4ZG5TC026890	SCBCB13S4TC026908	SCBCP2ZG0TC026866
SCBDR4ZGXTTC026965	SCBCH13S0TC026855	SCBCP2ZG1TC026858
SCBDR4ZGXTTC026982	SCBCM13S1TC026813	SCBCP2ZG3TC026487
SCBCP2ZG8TC026971	SCBCM13S3TC026747	SCBCP2ZG8TC026422
SCBCR23S1TC026883	SCBCM13S9TC026879	SCBCP2ZG9TC026770
SCBDP4ZG3TC026943	SCBCM13SXTTC026891	SCBCP2ZG9TC026848
SCBDP4ZG9TC026591	SCBCP2ZG3TC026859	SCBCP2ZG9TC026865
SCBCM1ZG9TC026948	SCBCP2ZG4TC026935	SCBCP2ZGXTTC026874
SCBCN13S4TC026902	SCBCP2ZG5TC026894	SCBCR2ZG9TC026889
SCBCN13S6TC026870	SCBCP2ZG9TC026915	SCBCU13S8TC026887
SCBCN13S6TC026979	SCBCP2ZG9TC026946	SCBDP4ZG0TC026236
SCBCP2ZG1TC026942	SCBCR13S7TC026882	SCBDP4ZG1TC026696
SCBCP2ZG3TC026926	SCBCR2ZG4TC026928	SCBDP4ZG2TC026836
SCBCP2ZG4TC026949	SCBCR2ZG5TC026906	SCBDP4ZG2TC026853
SCBCP2ZG6TC026905	SCBDM33S8TC026372	SCBDP4ZG2TC026867

SCBDP4ZG3TC026537	SCBDP4ZG8TC026825	SCBCN13SXTC026662
SCBDP4ZG6TC026886	SCBDP4ZG9TC026798	SCBCN13SXTC026788
SCBDP4ZG7TC026850	SCBDR4ZG1TC026806	SCBCP2ZG0TC026768
SCBDR4ZG1TC026692	SCBCM13S0TC026835	SCBCP2ZG5TC026796
SCBDR4ZG2TC026782	SCBCM13S3TC026098	SCBCP2ZG8TC026744
SCBDR4ZG3TC026581	SCBCM13S5TC026832	SCBCP2ZG9TC026736
SCBDR4ZG9TC026892	SCBCM13S6TC026791	SCBCP2ZGXTC026731
SCBCB13S4TC026701	SCBCM13S8TC026792	SCBCU13S1TC026780
SCBCG13SXTTC026316	SCBCN13S1TC026274	SCBDM33S8TC026369
SCBCM13S0TC026818	SCBCN13S2TC026638	SCBDM3ZG5TC026722
SCBCM13S4TC026773	SCBCP2ZG2TC026805	SCBDP43S3TC026714
SCBCM13S7TC026847	SCBCP2ZG6TC026757	SCBDP4ZG2TC026755
SCBCM13SXTTC026213	SCBCP2ZG6TC026760	SCBDP4ZG5TC026765
SCBCN13S0TC026766	SCBCP2ZG6TC026824	SCBDP4ZG6TC026483
SCBCN13S0TC026816	SCBDM33S6TC026466	SCBDP4ZG7TC026735
SCBCN13S1TC025982	SCBDM33S9TC025960	SCBDP4ZG8TC026694
SCBCN13S1TC026095	SCBDP4ZG1TC026830	SCBDP4ZG8TC026775
SCBCN13S1TC026839	SCBDP4ZG2TC026772	SCBDP4ZGXTC026745
SCBCP2ZG0TC026821	SCBDP4ZG5TC026779	SCBDR4ZG6TC026266
SCBCP2ZG2TC026786	SCBDP4ZG7TC026752	SCBDR4ZG9TC026620
SCBCP2ZG3TC026828	SCBDP4ZG7TC026802	SCBDR4ZGXTC026738
SCBCP2ZG4TC026837	SCBDP4ZG9TC026784	SCBCJ13S6TC026332
SCBCP2ZG8TC026808	SCBDP4ZGXTC026504	SCBCM13S1TC026603
SCBCR2ZG0TC026800	SCBDR4ZG0TC026313	SCBCM13S3TC026733
SCBDM33SXTTC026633	SCBDR4ZG7TC026762	SCBCM13S4TC026305
SCBDP4ZG0TC026804	SCBCD13S3TC026764	SCBCM13S4TC026742
SCBDP4ZG1TC026794	SCBCM13S3TC026795	SCBCM13S8TC026713
SCBDP4ZG2TC026822	SCBCN13S8TC026272	SCBCM13SXTTC026664
SCBDP4ZG6TC026189	SCBCN13S8TC026658	SCBCN13S2TC026610
SCBDP4ZG6TC026810	SCBCN13S9TC026524	SCBCN13S3TC025899
SCBDP4ZG7TC026749	SCBCN13S9TC026751	SCBCN13S7TC026697

SCBCN1ZG2TC026657	SCBCN13S6TC026688	SCBCN13S2TC026672
SCBCP2ZG0TC026611	SCBCN13S7TC025341	SCBCN13S4TC026043
SCBCP2ZG0TC026690	SCBCN13S7TC026683	SCBCN13S4TC026575
SCBCP2ZG0TC026723	SCBCP2ZG2TC026660	SCBCN13S8TC026675
SCBCP2ZG0TC026754	SCBCP2ZG5TC026717	SCBCP2ZG3TC026635
SCBCP2ZG4TC026739	SCBCP2ZG7TC026654	SCBCR2ZG1TC026126
SCBCP2ZG5TC026720	SCBCP2ZG7TC026685	SCBDM33S5TC025843
SCBCP2ZG6TC026726	SCBCU13S7TC026606	SCBDN33S0TC026492
SCBCP2ZG8TC026758	SCBDN33S2TC026641	SCBDP4ZG1TC026407
SCBCR2ZG6TC025814	SCBDP4ZG0TC026687	SCBDP4ZG1TC026617
SCBCU13S2TC026318	SCBDP4ZG0TC026706	SCBDP4ZG2TC026674
SCBDJ33S9TC026017	SCBDP4ZG1TC026682	SCBDP4ZG3TC026473
SCBDM33S7TC026640	SCBDP4ZG3TC026652	SCBDP4ZG5TC026586
SCBDN33S7TC026666	SCBDP4ZG5TC026541	SCBDP4ZG5TC026605
SCBDP4ZG2TC026710	SCBDP4ZG5TC026703	SCBDP4ZG6TC026614
SCBDP4ZG2TC026741	SCBDP4ZG6TC026600	SCBDP4ZG8TC026632
SCBDP4ZG2TC026769	SCBDP4ZG6TC026659	SCBDP4ZG8TC026663
SCBDP4ZG5TC026670	SCBDR4ZG6TC026719	SCBDR4ZG4TC026296
SCBDP4ZG7TC026282	SCBDR4ZG7TC026678	SCBCM1ZG0TC026613
SCBDP4ZG8TC026730	SCBDR4ZG7TC026700	SCBCN13S5TC026598
SCBDP4ZG9TC026655	SCBCB13S0TC026680	SCBCN13S6TC026643
SCBDP4ZGXTTC026647	SCBCM13S1TC026231	SCBCN13S8TC026515
SCBDR4ZG1TC026725	SCBCM13S1TC026519	SCBCP2ZG2TC026593
SCBDR4ZG7TC026728	SCBCM13S2TC026626	SCBCP2ZG9TC026557
SCBCM13S2TC026562	SCBCM13S3TC026618	SCBDM33S0TC026608
SCBCM13S3TC026716	SCBCM13S4TC026630	SCBDM33S6TC026595
SCBCM13S6TC026645	SCBCM13S5TC026555	SCBDM33S8TC026565
SCBCM13S7TC026704	SCBCM13S7TC026668	SCBDP4ZG6TC026516
SCBCM1ZG0TC026711	SCBCM13S8TC026677	SCBDP4ZG6TC026628
SCBCM1ZG6TC026616	SCBCN13S1TC026467	SCBDP4ZG7TC026637
SCBCN13S5TC026651	SCBCN13S2TC026588	SCBDR4ZG8TC026589

SCBCM13S2TC026576	SCBCN13S9TC026359	SCBCN13SXTC026354
SCBCM13S3TC026585	SCBCN13S9TC026538	SCBCN13SXTC026497
SCBCM13S6TC026578	SCBCP2ZG3TC026571	SCBCP2ZG6TC026306
SCBCM1ZG5TC026543	SCBCR2ZGXTTC026500	SCBCP2ZG8TC026517
SCBCN13S1TC026193	SCBDN33S1TC026257	SCBDB33S7TC026238
SCBCN13S2TC026560	SCBDN33S7TC026358	SCBDM33S0TC026544
SCBCN13S3TC026454	SCBDP4ZG0TC026432	SCBDN33S4TC026530
SCBCP2ZG5TC026622	SCBDP4ZG0TC026477	SCBDP4ZG4TC026501
SCBCP2ZGXTTC026602	SCBDP4ZG1TC026438	SCBDP4ZG5TC026510
SCBCR2ZG7TC026521	SCBDP4ZG1TC026455	SCBDP4ZG6TC026435
SCBDB33S7TC026384	SCBDP4ZG1TC026486	SCBDP4ZG8TC026534
SCBDM33S9TC026333	SCBDP4ZG2TC026495	SCBDP4ZGXTTC026552
SCBDM33SXTTC026597	SCBDP4ZG3TC026523	SCBDR4ZG8TC026480
SCBDN33S4TC026513	SCBDP4ZG7TC026430	SCBCM13S2TC026335
SCBDN33S4TC026558	SCBDP4ZG7TC026444	SCBCM13S3TC026375
SCBDN33S7TC026554	SCBDP4ZG8TC026520	SCBCM13S4TC026434
SCBDN33S8TC026403	SCBDR4ZG5TC026548	SCBCM13S8TC026503
SCBDN33S8TC026577	SCBDR4ZG9TC026469	SCBCM13S9TC026459
SCBDP4ZG0TC026527	SCBCB13S8TC026457	SCBCM1ZG6TC026339
SCBDP4ZG2TC026447	SCBCH13S1TC025875	SCBCN13S1TC026484
SCBDP4ZG4TC026109	SCBCJ13S8TC026509	SCBCN13S8TC026482
SCBDP4ZG6TC025947	SCBCM13S0TC026494	SCBCN13S9TC026412
SCBDP4ZG7TC026573	SCBCM13S1TC026536	SCBCP2ZG1TC026018
SCBDP4ZG8TC026579	SCBCM13S2TC026478	SCBCP2ZG1TC026472
SCBDP4ZG8TC026582	SCBCM13S7TC026475	SCBCP2ZG5TC026491
SCBDR4ZG2TC026507	SCBCN13S2TC026512	SCBCP2ZG9TC026364
SCBCM13S2TC026464	SCBCN13S2TC026526	SCBCP2ZG9TC026400
SCBCM13S3TC026540	SCBCN13S7TC026506	SCBCR2ZG8TC026379
SCBCM13S4TC026546	SCBCN13S8TC026370	SCBCU13S7TC026461
SCBCN13S2TC026431	SCBCN13S8TC026465	SCBDB33S3TC026186
SCBCN13S8TC026532	SCBCN13S8TC026529	SCBDM33S0TC026303

SCBDM33S7TC026251	SCBCN13S1TC026405	SCBCM1ZG1TC025891
SCBDM33S8TC026498	SCBCP2ZG3TC026330	SCBCN13S0TC026346
SCBDN33S0TC026427	SCBCP2ZG4TC026420	SCBCN13S6TC026223
SCBDP4ZG7TC026489	SCBCP2ZG7TC026394	SCBCN13S7TC026117
SCBDR4ZG1TC026451	SCBDM33S0TC026401	SCBCN13S7TC026327
SCBCM13S6TC026449	SCBDM33S2TC026366	SCBCN13S8TC026255
SCBCR2ZG3TC026452	SCBDM33S7TC025746	SCBCP2ZGXTTC026311
SCBCN13S7TC026389	SCBDN33S7TC025677	SCBCR2ZG3TC026323
SCBCN13S7TC026442	SCBDP4ZG1TC026343	SCBDH33S7TC025590
SCBDM33S7TC026377	SCBDP4ZG1TC026410	SCBDM33S4TC026353
SCBDM3ZG8TC026360	SCBDP4ZG3TC026425	SCBDM33S5TC026233
SCBDN33S2TC026462	SCBDP4ZG5TC026314	SCBDM33S9TC026235
SCBDR4ZG4TC026136	SCBDR4ZG9TC026388	SCBDM33SXTTC026227
SCBCB13S7TC026367	SCBDR4ZG9TC026391	SCBDN33S4TC026320
SCBCJ13S3TC026417	SCBDU33SXTTC026406	SCBDN3ZG9TC026042
SCBCN13S3TC026437	SCBCM13S8TC026341	SCBDP4ZG2TC026271
SCBCN13S3TC026440	SCBCM13S9TC026039	SCBDP4ZG7TC026329
SCBCN1ZG6TC026337	SCBCN13S7TC026280	SCBDP4ZGXTTC026356
SCBCP2ZG5TC026295	SCBCN13S9TC026409	SCBDR4ZG7TC026308
SCBCP2ZG8TC026386	SCBCN1ZG0TC026396	SCBDR4ZG9TC026262
SCBCR13S6TC026470	SCBCP2ZG3TC026392	SCBCB13S5TC025654
SCBDM33S9TC026414	SCBCR2ZG0TC026361	SCBCM13S2TC026030
SCBDM3ZG6TC026325	SCBCR2ZG7TC026289	SCBCM13S2TC026285
SCBDN33S4TC026382	SCBDM33S8TC026209	SCBCM13S3TC026277
SCBDP4ZG1TC026441	SCBDN33S3TC026373	SCBCM13S4TC026322
SCBDP4ZG2TC026416	SCBDN33S6TC026299	SCBCM13S7TC026007
SCBDP4ZG8TC026419	SCBDP4ZG4TC026336	SCBCN13S0TC026301
SCBCM13S1TC026424	SCBDP4ZG7TC026363	SCBCN13S1TC026260
SCBCM13S9TC026350	SCBDP4ZG8TC026291	SCBCP2ZG0TC026298
SCBCM13S9TC026428	SCBCJ13SXTTC026270	SCBCP2ZG3TC026246
SCBCM1ZG3TC026380	SCBCM13S0TC026351	SCBCR2ZG5TC026310

SCBDN33S9TC026278	SCBCP2ZG6TC026225	SCBDP4ZG7TC025973
SCBDP4ZG0TC026284	SCBCP2ZG8TC026243	SCBDP4ZG8TC026047
SCBDP4ZG1TC026245	SCBCR13S4TC025902	SCBDP4ZG8TC026176
SCBDP4ZG4TC026286	SCBCU13S1TC026228	SCBDP4ZGXTTC025580
SCBDP4ZG7TC026198	SCBDM33S4TC026207	SCBDR4ZG1TC026112
SCBDP4ZG7TC026248	SCBDM3ZGXTTC026022	SCBDR4ZG6TC026171
SCBDP4ZG8TC026288	SCBDN33S2TC026168	SCBDR4ZG8TC026138
SCBDP4ZG9TC026218	SCBDN33S7TC026179	SCBDR4ZG9TC026164
SCBDR4ZG3TC026340	SCBDP4ZG3TC026151	SCBCB13S2TC025188
SCBCB13S8TC026264	SCBDP4ZG9TC026204	SCBCJ13S5TC026130
SCBCB13S9TC025589	SCBDP4ZGXTTC026230	SCBCM13S0TC026060
SCBCB13SXTTC026153	SCBCD13S7TC026184	SCBCM13S0TC026169
SCBCM13S1TC026293	SCBCM13S0TC025586	SCBCM13S2TC026173
SCBCM13S2TC026268	SCBCM13S0TC026219	SCBCM13S3TC026148
SCBCM13S5TC026250	SCBCM13S5TC026149	SCBCM13S4TC026160
SCBCM13S9TC026283	SCBCM13S5TC026202	SCBCM13S4TC026174
SCBCM1ZG4TC026131	SCBCM1ZG1TC026216	SCBCM13S5TC026166
SCBCN13S6TC025850	SCBCM1ZGXTTC026201	SCBCN13S0TC025598
SCBCP2ZG2TC026142	SCBCN13S3TC026096	SCBCN13S1TC026162
SCBCP2ZG6TC026242	SCBCN13S5TC026195	SCBCN13S3TC026177
SCBCP2ZG6TC026287	SCBCN13S9TC026183	SCBCN13S8TC026157
SCBDM33S9TC026252	SCBCN13SXTTC026211	SCBCN1ZG0TC026172
SCBCJ13S3TC026188	SCBCN1ZG8TC025951	SCBCP2ZG6TC026127
SCBCM13S2TC026206	SCBCP2ZG0TC025992	SCBCR13S4TC026144
SCBCM13SXTTC026163	SCBCR2ZG6TC026199	SCBCR2ZG4TC026122
SCBCN13S6TC026187	SCBCR2ZG9TC026214	SCBCU13S2TC026139
SCBCN1ZG7TC026234	SCBCU13SXTTC026034	SCBCU13S9TC025750
SCBCP2ZG0TC026253	SCBDM33SXTTC026132	SCBDM33S4TC026059
SCBCP2ZG1TC026181	SCBDN33S2TC026221	SCBDP4ZG0TC026141
SCBCP2ZG1TC026259	SCBDN33S6TC026190	SCBDP4ZG3TC026036
SCBCP2ZG2TC026240	SCBDP4ZG5TC026118	SCBDP4ZG3TC026134

SCBDR4ZG5TC026159	SCBDP4ZG5TC026068	SCBCN1ZG6TC026077
SCBDR4ZG6TC026106	SCBDP4ZG9TC025327	SCBCP2ZG0TC026074
SCBDR4ZG8TC026155	SCBDP4ZGXTTC026129	SCBCP2ZG4TC026093
SCBCM13S1TC026083	SCBCM1ZG6TC026115	SCBCP2ZG5TC025986
SCBCM13S3TC026103	SCBDP4ZGXTTC026101	SCBCP2ZG9TC026090
SCBCM13S5TC025485	SCBCM13S0TC026088	SCBDM33S4TC026028
SCBCM13S5TC026135	SCBCM13S5TC026121	SCBDM33S8TC026064
SCBCM13S6TC025995	SCBCM13S7TC025584	SCBDP4ZG0TC025927
SCBCM13S7TC026055	SCBCN13S0TC026010	SCBDP4ZG4TC025722
SCBCM13S8TC025903	SCBCN13S6TC025931	SCBDP4ZG9TC026056
SCBCM13SXTTC025997	SCBCP2ZG0TC026012	SCBDP4ZGXTTC026079
SCBCM13SXTTC026146	SCBCP2ZG0TC026057	SCBDR4ZG7TC026020
SCBCN13S7TC026019	SCBCP2ZG2TC026108	SCBCB13S5TC025752
SCBCN13S9TC026071	SCBCP2ZG3TC026120	SCBCM13S2TC025976
SCBCN1ZG0TC026124	SCBDC33S9TC026013	SCBCM13S3TC025968
SCBCP2ZG0TC025801	SCBDM33S5TC026085	SCBCM13S6TC026046
SCBCP2ZG9TC026087	SCBDN33S8TC026076	SCBCM13S8TC026002
SCBCR2ZG5TC026114	SCBDP4ZG5TC025776	SCBCM13SXTTC025871
SCBCU13S2TC026111	SCBDP4ZGXTTC026082	SCBCN13S0TC026024
SCBCU13S7TC025942	SCBDR4ZG5TC025920	SCBCN13S1TC025934
SCBCU13S7TC026069	SCBCM13S0TC026026	SCBCN13S1TC026033
SCBCU13S8TC026100	SCBCM13S1TC026066	SCBCN13S5TC026052
SCBDM33S6TC025771	SCBCM13S3TC025954	SCBCN13S7TC025839
SCBDM33S6TC026094	SCBCM13S4TC025977	SCBCP2ZG1TC026004
SCBDM33S7TC026038	SCBCM13S6TC026063	SCBCP2ZG5TC026037
SCBDP4ZG0TC026091	SCBCM13S6TC026080	SCBCP2ZG6TC025737
SCBDP4ZG3TC026053	SCBCN13S0TC026041	SCBCP2ZG6TC026015
SCBDP4ZG4TC025929	SCBCN13S0TC026072	SCBCP2ZG8TC026050
SCBDP4ZG4TC026031	SCBCN13S4TC026009	SCBCR2ZG5TC025979
SCBDP4ZG4TC026143	SCBCN13S5TC026049	SCBCR2ZGXTTC026027
SCBDP4ZG5TC026040	SCBCN13S6TC026061	SCBCR2ZGXTTC026044

SCBCU13S4TC025980	SCBDR4ZG0TC026005	SCBDP4ZG2TC025900
SCBDN33SXTTC025978	SCBDR4ZG8TC025944	SCBDP4ZG3TC025890
SCBDP4ZG3TC025999	SCBDR4ZG9TC025970	SCBDP4ZG5TC025874
SCBDP4ZG4TC025896	SCBCM13S0TC025894	SCBDP4ZG5TC025910
SCBDP4ZG4TC025994	SCBCM13S1TC025869	SCBDP4ZG6TC025950
SCBDP4ZG8TC025870	SCBCM13S1TC025919	SCBDP4ZG8TC025867
SCBDR4ZG2TC025972	SCBCM13S1TC025922	SCBDP4ZG8TC025917
SCBDR4ZGXTTC025878	SCBCM13S6TC025866	SCBDP4ZGXTTC025966
SCBCC13S3TC025990	SCBCM13S8TC025769	SCBDR43S1TC025815
SCBCJ13S0TC025984	SCBCM13S9TC025716	SCBCH13S3TC025912
SCBCM13S4TC026000	SCBCM1ZG4TC025772	SCBCM13S0TC025748
SCBCM1ZGXTTC025937	SCBCM1ZG7TC025880	SCBCM13S1TC025886
SCBCN13S4TC025958	SCBCN13S4TC025376	SCBCM13S3TC025906
SCBCN13S6TC025864	SCBCN13S5TC025905	SCBCM13S4TC025882
SCBCN13S6TC025945	SCBCN13S9TC025938	SCBCM13S6TC025821
SCBCN13S6TC025962	SCBCP2ZG0TC025913	SCBCM13S7TC025908
SCBCP2ZG7TC025794	SCBCP2ZG0TC025961	SCBCM1ZG2TC025706
SCBCP2ZG9TC025957	SCBCR2ZG1TC025834	SCBCM1ZG2TC025916
SCBCR2ZG0TC025923	SCBCR2ZG1TC025915	SCBCN13S4TC025930
SCBCR2ZG9TC025872	SCBCR2ZG3TC025835	SCBCP2ZG0TC025846
SCBCU13S9TC025988	SCBCR2ZG6TC025926	SCBCP2ZG4TC025848
SCBDG33S9TC025559	SCBCU13S5TC025955	SCBCP2ZG5TC025941
SCBDM33S1TC025953	SCBCU13S5TC025969	SCBCR2ZG6TC025909
SCBDM33S5TC025924	SCBCU13S6TC025785	SCBDN33SXTTC025849
SCBDN33S1TC025884	SCBCU13S6TC025964	SCBDP4ZG2TC025587
SCBDN33S4TC025622	SCBCU13SXTTC025949	SCBDP4ZG3TC025940
SCBDN33S4TC025975	SCBDB33S8TC025017	SCBDP4ZG4TC025767
SCBDP4ZG1TC025936	SCBDN33S0TC025732	SCBDP4ZG4TC025932
SCBDP4ZG6TC026001	SCBDN33S4TC025863	SCBCB13S2TC025806
SCBDP4ZG7TC025682	SCBDP4ZG2TC025833	SCBCB13S9TC025382
SCBDP4ZGXTTC025742	SCBDP4ZG2TC025881	SCBCM13S4TC025817

SCBCM13S4TC025879	SCBDP4ZG2TC025718	SCBDN33S1TC025710
SCBCM13S7TC025505	SCBDP4ZG2TC025847	SCBDN33S3TC025756
SCBCN13S2TC025893	SCBDP4ZG3TC025856	SCBDP4ZG0TC025829
SCBCN13S9TC025888	SCBDP4ZG6TC025818	SCBDP4ZG3TC025596
SCBCN13SXTTC025883	SCBDP4ZG8TC025836	SCBDP4ZG6TC025804
SCBCP2ZG4TC025820	SCBDR4ZG0TC025792	SCBCB13S1TC025778
SCBCP2ZG7TC025651	SCBDR4ZG8TC025782	SCBCB13S2TC025725
SCBCU13S8TC025898	SCBCB13S8TC025809	SCBCB13S6TC025758
SCBCU13S9TC025876	SCBCB13SXTTC025777	SCBCB13S6TC025761
SCBDN33S2TC025845	SCBCD13SXTTC025823	SCBCB13S8TC025762
SCBDP4ZG9TC025859	SCBCM13S3TC025744	SCBCM13S0TC025698
SCBDP4ZGXTTC025904	SCBCM13S7TC025715	SCBCM13S1TC025709
SCBCB13S6TC025825	SCBCM13S7TC025830	SCBCM13S1TC025757
SCBCB13SXTTC025813	SCBCM13SXTTC025790	SCBCM13S3TC025808
SCBCM13S4TC025798	SCBCN13S0TC025844	SCBCM13S4TC025784
SCBCM13S5TC025602	SCBCN13S3TC025403	SCBCM13S8TC025738
SCBCM13S8TC025741	SCBCN13S5TC025676	SCBCM13S9TC025697
SCBCM13S9TC025067	SCBCP2ZG0TC025605	SCBCN13S2TC025764
SCBCM13SXTTC025854	SCBCP2ZG1TC025824	SCBCN13S2TC025781
SCBCN13S3TC025840	SCBCP2ZG3TC025842	SCBCN13S4TC025734
SCBCN13S3TC025868	SCBCP2ZG5TC025812	SCBCN13S5TC025726
SCBCP2ZG4TC025851	SCBCP2ZG7TC025827	SCBCN13S7TC025467
SCBCP2ZG7TC025858	SCBCP2ZG9TC025831	SCBCN13S8TC025753
SCBCP2ZG7TC025861	SCBCP2ZGXTTC025787	SCBCP2ZG0TC025765
SCBCP2ZG8TC025691	SCBCR13S0TC025802	SCBCP2ZG1TC025774
SCBCP2ZG8TC025805	SCBCU13S2TC025797	SCBCP2ZG4TC025249
SCBCP2ZG8TC025853	SCBDC33S6TC025160	SCBCP2ZG5TC025745
SCBCR2ZG2TC025857	SCBDM33S0TC025796	SCBCU13S0TC025717
SCBDM33S7TC025438	SCBDM33S5TC025390	SCBCU13SXTTC025711
SCBDM33S8TC025822	SCBDM33S9TC025800	SCBDP4ZG1TC025693
SCBDM3ZG8TC025760	SCBDM3ZG8TC025838	SCBDP4ZG1TC025810

SCBDP4ZG4TC025445	SCBCM13S9TC025666	SCBCP2ZG8TC025660
SCBDP4ZG5TC025728	SCBCM13SXTC025708	SCBCP2ZGXTC025661
SCBDP4ZG6TC025575	SCBCM1ZG3TC025679	SCBCP2ZGXTC025675
SCBDP4ZG8TC025688	SCBCN13S5TC025323	SCBCU13S1TC025354
SCBDR4ZG9TC025788	SCBCN13S8TC025364	SCBCU13S8TC025657
SCBCB13S2TC025658	SCBCN13SXTTC025687	SCBDM33S3TC025663
SCBCB13S8TC025695	SCBCN13SXTTC025740	SCBDM33S5TC025583
SCBCM13S0TC025720	SCBCP2ZG0TC025670	SCBDM33S8TC025609
SCBCM13S3TC025775	SCBCP2ZG1TC025712	SCBDN33S2TC025652
SCBCM13S7TC025729	SCBCP2ZG2TC025668	SCBDP4ZG0TC025636
SCBCM1ZG4TC025755	SCBCR2ZG1TC025719	SCBDP4ZG3TC025517
SCBCM1ZGXTC025646	SCBCU13S9TC025733	SCBDP4ZG6TC025656
SCBCN13S0TC025780	SCBDM33S4TC025672	SCBDP4ZGXTC025613
SCBCN13S7TC025730	SCBDN33S0TC024810	SCBCB13S0TC025366
SCBCP2ZG6TC025673	SCBDN33S2TC025599	SCBCB13S1TC025361
SCBCP2ZG6TC025768	SCBDP4ZG3TC025629	SCBCB13S2TC025529
SCBDM33SXTTC025644	SCBDP4ZG4TC025736	SCBCB13S4TC025631
SCBDP4ZG2TC025699	SCBCB13S1TC025618	SCBCB13S5TC025556
SCBDP4ZG3TC025632	SCBCD13S7TC025620	SCBCB13S7TC025509
SCBDP4ZG5TC025714	SCBCJ13S7TC025643	SCBCB13S8TC025616
SCBDP4ZG7TC025648	SCBCM13S2TC025637	SCBCB13S9TC025334
SCBDR4ZGXTC025704	SCBCM1ZGXTC025680	SCBCM13S4TC025641
SCBCB13S0TC025612	SCBCN13S0TC025519	SCBCM13S5TC025650
SCBCB13S1TC025702	SCBCN13S9TC025664	SCBCM13SXTTC025563
SCBCB13S7TC025705	SCBCP2ZG0TC025667	SCBCM13SXTTC025630
SCBCB13S9TC025690	SCBCP2ZG3TC025694	SCBCM1ZG6TC025210
SCBCC13S8TC025130	SCBCP2ZG4TC025297	SCBCN13S1TC025626
SCBCD13S4TC025686	SCBCP2ZG4TC025462	SCBCN13S3TC025577
SCBCH13S1TC025701	SCBCP2ZG4TC025638	SCBCN13S7TC025615
SCBCM13S0TC025684	SCBCP2ZG6TC025494	SCBCN13S8TC025591
SCBCM13S6TC025723	SCBCP2ZG6TC025611	SCBCP2ZG5TC025647

SCBCP2ZG6TC025592	SCBCN13S7TC024433	SCBDM33S6TC025513
SCBCP2ZG6TC025608	SCBCN13S7TC025582	SCBDN33S7TC025534
SCBCP2ZG7TC025634	SCBCN13S9TC025552	SCBDP4ZG2TC025489
SCBCP2ZG9TC025585	SCBCN13S9TC025566	SCBCB13S0TC025433
SCBCP2ZGXTTC025627	SCBCP2ZG2TC025525	SCBCB13S3TC025216
SCBCU13S3TC025601	SCBCP2ZG4TC025588	SCBCB13S9TC025530
SCBCU13S4TC025624	SCBCP2ZG5TC025597	SCBCH13S4TC025515
SCBCU13S6TC025642	SCBCP2ZG6TC025561	SCBCJ13S1TC024780
SCBDB33S9TC025396	SCBCP2ZG7TC025553	SCBCN13S0TC025536
SCBDM33S2TC025413	SCBCP2ZGXTTC025594	SCBCN13S6TC025475
SCBDM33S8TC025593	SCBCR2ZG1TC025557	SCBCN13S7TC025520
SCBDM33SXTTC025546	SCBCR2ZG6TC025537	SCBCN13S9TC025311
SCBDP4ZG0TC025538	SCBCU13S9TC025540	SCBCP2ZG0TC025510
SCBDP4ZG3TC025405	SCBDM33S1TC025550	SCBCP2ZG1TC025337
SCBDP4ZG6TC025639	SCBDN33S6TC025508	SCBCP2ZG1TC025418
SCBDP4ZG7TC025603	SCBDN33S7TC025470	SCBCP2ZG1TC025516
SCBDR4ZG1TC025607	SCBDN33S9TC025292	SCBCP2ZG8TC025495
SCBDR4ZG3TC025625	SCBDP4ZG1TC025483	SCBCP2ZG9TC025473
SCBCB13S3TC025457	SCBDP4ZG4TC025574	SCBCU13S0TC025541
SCBCB13S4TC025595	SCBDP4ZG9TC025554	SCBCU13S4TC025512
SCBCB13S7TC025560	SCBDR4ZG2TC025499	SCBCU13S9TC024744
SCBCM13S1TC025564	SCBDR4ZG8TC025460	SCBDC33S6TC025496
SCBCM13S1TC025581	SCBCB13S0TC025545	SCBDM33S4TC025493
SCBCM13S2TC025203	SCBCB13S6TC025548	SCBDM33S6TC025527
SCBCM13S2TC025606	SCBCM13SXTTC025451	SCBDN33S2TC025344
SCBCM13S3TC025579	SCBCN13S2TC025523	SCBDN33S7TC025503
SCBCM13S5TC025356	SCBCN13S5TC025533	SCBDP4ZG2TC025542
SCBCM13S7TC025567	SCBCN13SXTTC025544	SCBDP4ZG5TC025521
SCBCM13S8TC025187	SCBCP2ZGXTTC025532	SCBDR4ZG7TC025448
SCBCM13S8TC025576	SCBCU13S1TC025502	SCBDR4ZG8TC025426
SCBCN13S4TC025507	SCBCU13S5TC025504	SCBCB13S1TC025215

SCBCB13S2TC025417	SCBCC13S6TC025093	SCBCC13S7TC025393
SCBCB13S3TC025488	SCBCM13S0TC025443	SCBCM13S0TC025328
SCBCB13S5TC025346	SCBCM13S1TC024950	SCBCM13S3TC025386
SCBCB13S5TC025492	SCBCM13S6TC025415	SCBCM13S7TC025312
SCBCB13S6TC025498	SCBCM13S7TC025441	SCBCM13S7TC025388
SCBCD13S9TC025439	SCBCM13S8TC025352	SCBCM13SXTTC025269
SCBCJ1ZG3TC025481	SCBCM1ZG6TC024610	SCBCM13SXTTC025305
SCBCM13S0TC025491	SCBCM1ZG8TC025435	SCBCN13S0TC025150
SCBCM13S2TC025511	SCBCP2ZG6TC025446	SCBCN13S0TC025391
SCBCM13S3TC025369	SCBCR2ZG2TC025437	SCBCN13S2TC025389
SCBCM13S3TC025453	SCBDM33S1TC025421	SCBCN13S2TC025411
SCBCM13S3TC025484	SCBDM33S7TC025407	SCBCN13S8TC025235
SCBCM13S5TC025454	SCBDM33S7TC025410	SCBCN13S9TC025177
SCBCM13S7TC025469	SCBDP4ZG3TC025288	SCBCN1ZG0TC025278
SCBCM1ZG4TC025478	SCBDP4ZG3TC025372	SCBCN1ZGXTTC025398
SCBCN13S6TC025458	SCBDP4ZG6TC025432	SCBCP2ZG1TC025399
SCBCP2ZG4TC025476	SCBDR4ZG1TC025381	SCBCR2ZG7TC025384
SCBCP2ZG5TC025471	SCBCB13S6TC025422	SCBDP4ZG5TC025339
SCBCP2ZG9TC025487	SCBCB13S7TC025414	SCBDP4ZGXTTC025367
SCBCP2ZGXTTC025482	SCBCM13S0TC025233	SCBDR4ZG1TC025350
SCBCR2ZG7TC025501	SCBCM13S4TC025428	SCBDR4ZGXTTC025332
SCBCU13SXTTC025465	SCBCM13S7TC025424	SCBCB13S0TC025318
SCBDB33S9TC025253	SCBCM13S9TC025408	SCBCB13S1TC025330
SCBDM33S8TC025464	SCBCN13S6TC025430	SCBCB13S5TC025315
SCBDN33S0TC025455	SCBCN13S8TC025395	SCBCD13S7TC025360
SCBDN33S3TC025479	SCBCP2ZG2TC025377	SCBCM13S2TC025301
SCBDP4ZG6TC025401	SCBDM33S9TC025375	SCBCM13S8TC025285
SCBCB13S0TC025450	SCBDN33S3TC024879	SCBCN13S1TC025299
SCBCB13S2TC025420	SCBDN33S4TC025362	SCBCN13S5TC025371
SCBCB13S5TC025251	SCBDN33SXTTC025091	SCBCN13SXTTC025348
SCBCB13S9TC025379	SCBDR4ZG6TC025358	SCBCP2ZG5TC025373

SCBCP2ZG7TC025259	SCBDP4ZG6TC025205	SCBDM33S1TC025273
SCBCR2ZG2TC025342	SCBDP4ZG6TC025317	SCBDM33S4TC024652
SCBDP4ZG6TC025172	SCBDP4ZG8TC025268	SCBDN33S1TC025061
SCBDP4ZG6TC025219	SCBDP4ZG9TC025313	SCBDN33S1TC025271
SCBDP4ZG7TC025164	SCBDR4ZG0TC025033	SCBDN33S2TC024906
SCBDP4ZG9TC025246	SCBDR4ZG3TC025303	SCBDP4ZG0TC025250
SCBDP4ZGXTTC024932	SCBCB13S4TC025287	SCBDP4ZG4TC025168
SCBDP4ZGXTTC025322	SCBCB13S5TC025282	SCBDP4ZG5TC025261
SCBCB13S1TC025280	SCBCB13S6TC024822	SCBDP4ZG5TC025275
SCBCB13S7TC024988	SCBCB13S8TC025258	SCBDP4ZG8TC025044
SCBCB13S8TC025308	SCBCC13S6TC024977	SCBDP4ZG8TC025223
SCBCM13S7TC025228	SCBCD13S7TC024922	SCBDR43S4TC025145
SCBCM13S9TC025201	SCBCG13S5TC024926	SCBDR4ZG0TC025212
SCBCM13S9TC025263	SCBCM13S4TC025218	SCBDR4ZG6TC025229
SCBCM13S9TC025294	SCBCM13S4TC025266	SCBDR4ZG7TC025241
SCBCM1ZG2TC025320	SCBCM13S8TC025254	SCBCM13S5TC025230
SCBCN13S4TC025247	SCBCM13SXTTC025031	SCBCM13S9TC025196
SCBCN13S4TC025295	SCBCM1ZG0TC024764	SCBCN13S1TC025125
SCBCN13S7TC025291	SCBCN13S2TC024646	SCBCN13S3TC024896
SCBCN13S9TC025325	SCBCN13S2TC024887	SCBCP2ZG0TC024843
SCBCN13SXTTC024863	SCBCN13S4TC025152	SCBCR2ZG9TC025208
SCBCN13SXTTC025141	SCBCN13S4TC025264	SCBCU13S6TC025012
SCBCP2ZG3TC025310	SCBCN13S5TC025256	SCBDM33S1TC025189
SCBCP2ZG7TC025276	SCBCN13SXTTC024619	SCBDM33S3TC025226
SCBCU13S3TC025243	SCBCP2ZG1TC025225	SCBCB13SXTTC025245
SCBCU13S8TC025237	SCBCP2ZG3TC025274	SCBCM13S1TC025192
SCBDM33S2TC025265	SCBCP2ZG4TC025039	SCBCM13S4TC025199
SCBDM33S3TC025307	SCBCR23S6TC025079	SCBCM13S4TC025204
SCBDN33S9TC025115	SCBCR23S9TC025206	SCBCM13S4TC025221
SCBDN33SXTTC025284	SCBCR2ZG2TC025289	SCBCM13S9TC025120
SCBDP4ZG2TC025279	SCBCR2ZG7TC025191	SCBCN13S1TC025240

SCBCP2ZG2TC025184	SCBDR4ZG7TC024784	SCBCM13S3TC024870
SCBCP2ZG8TC024881	SCBCB13S3TC025135	SCBCM13S7TC025097
SCBCP2ZG9TC025232	SCBCB13S4TC025144	SCBCM1ZG8TC024575
SCBDM33S9TC025182	SCBCB13S8TC024983	SCBCN13S0TC024760
SCBDM33SXTTC024946	SCBCD13S8TC023908	SCBCN13S3TC025126
SCBDN33S0TC025214	SCBCM13S2TC025086	SCBCN13S5TC024916
SCBDN33S2TC025179	SCBCM13S3TC025162	SCBCN13S7TC025081
SCBDP4ZG5TC025065	SCBCM13S7TC024824	SCBCN13S8TC024960
SCBDP4ZG7TC025052	SCBCM13S7TC025083	SCBCN13S9TC024921
SCBDP4ZG7TC025147	SCBCM13S7TC025116	SCBCP2ZG2TC025119
SCBCB13SXTTC025133	SCBCM13S9TC025103	SCBCP2ZG6TC025043
SCBCD13S6TC024944	SCBCM13SXTTC025076	SCBCP2ZG9TC025036
SCBCM13S2TC025167	SCBCN13S7TC025128	SCBCR2ZG9TC025113
SCBCM13S4TC025171	SCBCN13SXTTC025088	SCBDB33S5TC024763
SCBCM13S9TC025165	SCBCN1ZG9TC025070	SCBDG33S1TC024938
SCBCN13S0TC024967	SCBCP2ZG1TC025175	SCBDJ33SXTTC025085
SCBCN13S0TC025181	SCBCP2ZG3TC025159	SCBDM33S0TC025099
SCBCN13S1TC025173	SCBCR2ZG6TC025053	SCBDM33S4TC024893
SCBCN13S4TC025006	SCBCU13SXTTC025157	SCBDM33S6TC024958
SCBCN13S5TC024477	SCBDN33S0TC025021	SCBDN33S2TC024968
SCBCN13SXTTC025138	SCBDN33S1TC025058	SCBDN33S4TC024759
SCBCN13SXTTC025155	SCBDP4ZG0TC025037	SCBDN33S9TC024840
SCBCP2ZG9TC025148	SCBDP4ZG2TC025122	SCBDP4ZG0TC025068
SCBCP2ZGXTTC025143	SCBDP4ZG3TC025095	SCBDP4ZG0TC025071
SCBDB33SXTTC024581	SCBDR4ZG0TC025131	SCBDP4ZG0TC025118
SCBDM33S2TC025153	SCBDR4ZG1TC025137	SCBDP4ZG1TC025046
SCBDM33S8TC025013	SCBDR4ZG4TC025049	SCBDP4ZG2TC025041
SCBDN33S4TC024986	SCBCB13S4TC025001	SCBDR4ZG9TC025077
SCBDN33S9TC025194	SCBCB13S7TC025090	SCBDR4ZG9TC025080
SCBDP4ZG0TC025197	SCBCB13S8TC024952	SCBCP2ZG5TC025101
SCBDP4ZG6TC025186	SCBCJ13S1TC024858	SCBCP2ZG1TC025063

SCBCP2ZG4TC025073	SCBDM33S0TC024115	SCBDM33S6TC024975
SCBDM33S1TC025029	SCBDM33S3TC025002	SCBDN33S3TC024994
SCBDM33S4TC025025	SCBDM33S6TC024829	SCBDN33S6TC024990
SCBDP4ZG6TC025074	SCBDM33S6TC025009	SCBDP4ZG3TC024755
SCBCB13S5TC025024	SCBDM33S7TC024998	SCBDR4ZG2TC024885
SCBCB13S6TC025016	SCBDP4ZG2TC025055	SCBDR4ZG4TC024032
SCBCB13S8TC024966	SCBDP4ZG8TC024928	SCBCB13S0TC024878
SCBCB13SXTTC024919	SCBDR4ZG4TC024192	SCBCB13S2TC024963
SCBCB13SXTTC024970	SCBCB13S6TC024948	SCBCB13S7TC024912
SCBCJ1ZG0TC024370	SCBCB13S8TC024918	SCBCB13S7TC025008
SCBCM13S3TC024979	SCBCB13S8TC025020	SCBCM13S0TC024874
SCBCM13S3TC024996	SCBCM13S1TC024883	SCBCM13S0TC024924
SCBCM13S5TC024465	SCBCM13S2TC025010	SCBCM13S2TC024908
SCBCM13S6TC025060	SCBCM13S3TC024965	SCBCM13S2TC024942
SCBCM13S7TC024936	SCBCM13S5TC025003	SCBCM13S4TC024974
SCBCM13S9TC025005	SCBCM13S7TC025004	SCBCM13S5TC024904
SCBCM13SXTTC025028	SCBCM13S8TC024914	SCBCM13S6TC024961
SCBCM1ZG2TC024992	SCBCM13S9TC024954	SCBCN13S4TC024972
SCBCM1ZG4TC024797	SCBCM13S9TC025019	SCBCN13S5TC024821
SCBCN13S1TC024573	SCBCM1ZG7TC024700	SCBCN13S6TC024844
SCBCN13S2TC024985	SCBCN13S2TC024999	SCBCN13S8TC024876
SCBCN13S3TC025045	SCBCN13S2TC025022	SCBCU13S0TC024969
SCBCN13S6TC024617	SCBCN13S5TC024981	SCBCU13S1TC024902
SCBCN13SXTTC025026	SCBCP2ZG2TC024861	SCBCU13S8TC024766
SCBCP2ZG5TC025048	SCBCP2ZG8TC024931	SCBDM33S8TC024864
SCBCP2ZG6TC024703	SCBCR13SXTTC025015	SCBDN33S4TC024910
SCBCP2ZG7TC025035	SCBCR2ZG0TC024934	SCBCB13S0TC024900
SCBCP2ZG9TC024307	SCBCR2ZG7TC024929	SCBCB13S1TC024940
SCBCR2ZG1TC025042	SCBCR2ZGXTTC024326	SCBCB13S5TC024682
SCBCR2ZG3TC025057	SCBCU13S8TC024587	SCBCM13S5TC024739
SCBDB33S5TC024889	SCBDM33S5TC024790	SCBCM13S6TC024698

SCBCM13S6TC024894	SCBCN13S6TC024827	SCBCM1ZG5TC024677
SCBCM1ZG4TC024637	SCBCN13SXTTC024684	SCBCM1ZGXTTC024819
SCBCM1ZG7TC024695	SCBCN1ZG5TC024658	SCBCN13S1TC024623
SCBCM1ZG8TC024852	SCBCP2ZG1TC024799	SCBCN13S4TC024163
SCBCN13S5TC024866	SCBCR2ZG3TC024846	SCBCN13SXTTC024376
SCBCN13S6TC024956	SCBCR2ZG4TC024855	SCBCP2ZG4TC024716
SCBCN13S7TC024898	SCBCR2ZG9TC024673	SCBCP2ZG7TC024791
SCBDM33S1TC024334	SCBCU13S9TC024811	SCBCR2ZG2TC024305
SCBDM33S4TC024456	SCBDB33S8TC024868	SCBDM33S0TC024745
SCBDN33S0TC024872	SCBDP4ZG1TC024818	SCBDM33S4TC024621
SCBDN33S8TC024635	SCBDP4ZG2TC024794	SCBDN33S5TC024740
SCBDR4ZG3TC024121	SCBDP4ZG3TC024769	SCBDP4ZG4TC024814
SCBCB13S2TC024848	SCBDP4ZG4TC024697	SCBCB13S4TC024804
SCBCM13S0TC024891	SCBDP4ZG4TC024778	SCBCB13S6TC024786
SCBCR13S5TC024807	SCBDP4ZG4TC024845	SCBCB13S9TC024779
SCBCR2ZG8TC024812	SCBDP4ZG5TC024806	SCBCM13S0TC024762
SCBCU13S9TC024842	SCBDP4ZG5TC024854	SCBCM13S0TC024793
SCBDM33S8TC024251	SCBDP4ZGXTTC024834	SCBCM13S2TC024777
SCBDP4ZG8TC024850	SCBCB13S0TC024816	SCBCM1ZG2TC024751
SCBDR4ZG8TC024860	SCBCB13S2TC024476	SCBCM1ZG5TC024730
SCBCB13S1TC024856	SCBCB13S4TC024835	SCBCM1ZG7TC024809
SCBCB13S3TC024728	SCBCB13S5TC024830	SCBCN13S5TC024253
SCBCB13SXTTC024757	SCBCB13S8TC024837	SCBCN13SXTTC024720
SCBCD13S3TC024318	SCBCM13S0TC024714	SCBCN1ZG0TC024583
SCBCM13S0TC024390	SCBCM13S1TC024687	SCBCP2ZG1TC024771
SCBCM13S5TC024871	SCBCM13S4TC024747	SCBCU13S4TC024795
SCBCM13S7TC024788	SCBCM13S9TC024825	SCBCU13S6TC024801
SCBCM1ZG4TC024735	SCBCM13S9TC024839	SCBCU13S9TC024775
SCBCM1ZG5TC024629	SCBCM13SXTTC024722	SCBDM33S0TC024602
SCBCN13S0TC024709	SCBCM1ZG2TC024832	SCBDM33S2TC024388
SCBCN13S0TC024743	SCBCM1ZG5TC024503	SCBDP4ZG1TC024012

SCBDP4ZG6TC024507	SCBDP4ZG7TC024726	SCBDB33S6TC024321
SCBDP4ZG8TC024802	SCBDP4ZG8TC024749	SCBDM33S7TC024497
SCBDU33S2TC024732	SCBDU33S1TC024530	SCBDM33S9TC024565
SCBCD13S3TC024724	SCBCB13S2TC024526	SCBDM3ZG6TC024607
SCBCJ13S6TC024712	SCBCB13SXTC024483	SCBDN33S9TC024627
SCBCM13S1TC024270	SCBCM13S3TC024187	SCBDN3ZG5TC024689
SCBCM13S1TC024768	SCBCM13S7TC024631	SCBDN3ZGXTTC024672
SCBCM13S5TC024675	SCBCM1ZG0TC024733	SCBDP4ZG9TC024615
SCBCM13S5TC024756	SCBCM1ZG2TC024510	SCBDR4ZG7TC024414
SCBCM13S6TC024653	SCBCP2ZG3TC024691	SCBDU33S1TC024656
SCBCM13SXTTC024753	SCBCP2ZG6TC024667	SCBDU33S4TC024554
SCBCM1ZG4TC024671	SCBCR2ZG0TC024741	SCBCB13S4TC024592
SCBCM1ZG4TC024704	SCBCR2ZG9TC024737	SCBCB13S8TC024322
SCBCM1ZG7TC024664	SCBDM33S1TC024611	SCBCM13S2TC024603
SCBCM1ZG8TC024608	SCBDM33S7TC024693	SCBCM13S5TC024563
SCBCM1ZGXTTC024495	SCBDM33S8TC024685	SCBCM13S5TC024644
SCBCM1ZGXTTC024643	SCBDM3ZG8TC024480	SCBCM1ZG2TC024541
SCBCN13S0TC024659	SCBDP4ZGXTTC024719	SCBCM1ZGXTTC024528
SCBCN13S9TC024773	SCBDR33S0TC024715	SCBCM1ZGXTTC024562
SCBCP2ZG8TC024301	SCBCB13S1TC024680	SCBCN13S4TC024650
SCBCR13S1TC024710	SCBCB13S4TC024625	SCBCP2ZG0TC024633
SCBCR13S8TC024669	SCBCM13S6TC024491	SCBCU13S1TC024558
SCBCU13S6TC024782	SCBCM13S9TC024209	SCBCU13S2TC024505
SCBCU13SXTTC024655	SCBCM1ZG4TC024718	SCBCU13S4TC024571
SCBDM33S0TC024597	SCBCN13S5TC024706	SCBDM33S0TC024230
SCBDM33S1TC024639	SCBCN13S8TC024313	SCBDM33S1TC024124
SCBDM33S4TC024666	SCBCN13S8TC024599	SCBDM33S4TC024585
SCBDM3ZG9TC024679	SCBCR2ZG4TC024662	SCBDM33S9TC024548
SCBDN33S6TC024701	SCBCU13S0TC024616	SCBDN33S7TC024478
SCBDP4ZG4TC024473	SCBCU13S3TC024707	SCBDN33S7TC024660
SCBDP4ZG5TC024711	SCBCU13SXTTC024641	SCBDP4ZG8TC024590

SCBDP4ZG9TC024355	SCBDB33S3TC024258	SCBCR2ZG6TC024484
SCBDP4ZGXTTC024560	SCBDN33S6TC024570	SCBDM33S0TC024518
SCBDP4ZGXTTC024574	SCBDP4ZG4TC024540	SCBDM33S3TC023749
SCBDU33S2TC024648	SCBDR4ZGXTTC024567	SCBDM33S6TC024412
SCBCB13S4TC024589	SCBCM13S5TC024546	SCBDM33S8TC024363
SCBCB13S7TC024425	SCBCM13S6TC024538	SCBDN33S3TC024493
SCBCM13S5TC024613	SCBCM13SXTTC024512	SCBDN33S4TC024504
SCBCM13S7TC024595	SCBCN13S1TC024508	SCBDN33SXTTC024524
SCBCM1ZG2TC024605	SCBCN13S5TC024513	SCBDP4ZG0TC023966
SCBCM1ZG5TC024372	SCBCN13S9TC024353	SCBDP4ZG0TC024373
SCBCN13S0TC024628	SCBCP2ZG6TC024555	SCBDP4ZG1TC024429
SCBCN13S5TC023930	SCBCP2ZG9TC024551	SCBCB13S0TC024332
SCBCN13S8TC024568	SCBCR2ZG5TC024458	SCBCB13S1TC024467
SCBCN1ZG3TC024545	SCBCU13S0TC024499	SCBCB13S1TC024470
SCBCN1ZG4TC024604	SCBCU13S8TC024525	SCBCB13S5TC024455
SCBCP2ZG5TC024577	SCBCU13S8TC024556	SCBCB13S8TC024451
SCBCP2ZGXTTC024543	SCBDN33S6TC024536	SCBCB13S9TC024460
SCBCU13S2TC024620	SCBDN33SXTTC024569	SCBCM13S5TC024191
SCBCU13S5TC024594	SCBDP4ZG4TC024487	SCBCN13S7TC024481
SCBCU13S9TC024601	SCBDP4ZG5TC024501	SCBCN1ZG1TC024432
SCBDM33S2TC024018	SCBDR4ZG4TC024550	SCBCR2ZG0TC024271
SCBDN3ZG9TC024534	SCBDR4ZGXTTC024522	SCBCR2ZG6TC024453
SCBDP4ZG6TC024572	SCBDU33S2TC024360	SCBDB33S5TC024309
SCBDP4ZG8TC024511	SCBCB13S4TC024463	SCBDM33S2TC024035
SCBCB13S1TC024579	SCBCG13S1TC024521	SCBDM33S6TC024443
SCBCB13S5TC024472	SCBCM13S0TC023983	SCBDM33SXTTC024462
SCBCM13S5TC024532	SCBCM13S9TC024520	SCBDN33S4TC024454
SCBCM13S7TC024516	SCBCN13S0TC024404	SCBDN33S4TC024468
SCBCM1ZG3TC024533	SCBCN13S1TC024489	SCBDN33S4TC024485
SCBCN1ZG2TC024553	SCBCN13S9TC024515	SCBDR4ZG2TC024367
SCBCP2ZG0TC024311	SCBCN13SXTTC024474	SCBDR4ZGXTTC024441

SCBCB13S0TC024444	SCBCM13S5TC024269	SCBCM13S5TC024210
SCBCB13S7TC024411	SCBCM13SXTC024381	SCBCM13SXTC024090
SCBCB13S7TC024439	SCBCM13SXTC024431	SCBCN13S0TC024290
SCBCM13S7TC024046	SCBCN13S3TC024333	SCBCN13S4TC024292
SCBCM13S7TC024435	SCBCN13S5TC024298	SCBCN13S8TC024215
SCBCM1ZG5TC024419	SCBCN13S5TC024320	SCBCP2ZG7TC024287
SCBCN13S3TC024297	SCBCN13S5TC024379	SCBCP2ZG9TC024386
SCBCN13S4TC024406	SCBCN13S7TC024335	SCBDM33S1TC024155
SCBCN13S6TC024245	SCBCR2ZG2TC024420	SCBDM33S1TC024365
SCBCN13S9TC024448	SCBDM33S4TC024392	SCBDP4ZG5TC024398
SCBCN1ZG4TC024344	SCBDM33S7TC024385	SCBCM13S0TC024356
SCBCN1ZG9TC024436	SCBDM33S7TC024418	SCBCM13S1TC024284
SCBCP2ZG8TC024119	SCBDM33S8TC024282	SCBCM13S1TC024348
SCBCR2ZG4TC024399	SCBDP4ZG1TC024303	SCBCM13S4TC024358
SCBDB33S6TC024383	SCBDP4ZG4TC024330	SCBCM13S7TC024368
SCBDN33S5TC024446	SCBDP4ZG4TC024408	SCBCM1ZGXTTC024156
SCBDN33S8TC024327	SCBDP4ZG9TC024422	SCBCN13S2TC024310
SCBDP4ZG0TC024437	SCBDR4ZG7TC024400	SCBCN13S4TC024342
SCBDP4ZG2TC024424	SCBCB13S2TC024364	SCBCP2ZG0TC024289
SCBDP4ZG5TC024000	SCBCJ1ZG7TC024351	SCBCP2ZG4TC024232
SCBDP4ZG7TC024449	SCBCM13S3TC024092	SCBDM33S4TC024182
SCBCB13S2TC024395	SCBCM13S7TC024337	SCBDM33S6TC024166
SCBCB13S4TC024396	SCBCN13SXTC024409	SCBDM33S6TC024300
SCBCB13S6TC024402	SCBDM33SXTC024378	SCBDM3ZG2TC024247
SCBCB13SXTC024421	SCBDN33S5TC024317	SCBDN33S3TC024204
SCBCD13S8TC024427	SCBCB13S0TC024346	SCBDN33S8TC024201
SCBCM13S1TC024382	SCBCB13S2TC024350	SCBDP4ZG0TC024325
SCBCM13S3TC024416	SCBCB13S5TC024133	SCBDP4ZG3TC024349
SCBCM13S4TC024294	SCBCB13S6TC024304	SCBDP4ZG9TC024338
SCBCM13S4TC024361	SCBCB13S7TC024375	SCBDR4ZG0TC024268
SCBCM13S5TC024255	SCBCG13S8TC024340	SCBCN13S1TC024315

SCBCN13S8TC024277	SCBCP2ZG1TC024107	SCBDM33S7TC024144
SCBCN13S9TC024160	SCBCP2ZG3TC024206	SCBDM33S7TC024161
SCBCN1ZG6TC024328	SCBCP2ZG5TC024241	SCBDM33S9TC024212
SCBCP2ZG4TC024229	SCBCP2ZG8TC024248	SCBDM33SXTTC024168
SCBCP2ZG4TC024280	SCBCP2ZG9TC024260	SCBDN33S0TC024158
SCBCP2ZG6TC024250	SCBCP2ZGXTTC024154	SCBDN33S7TC024223
SCBCP2ZG6TC024314	SCBDM33S8TC024170	SCBDP4ZG0TC024244
SCBCP2ZGXTTC024218	SCBDM33S9TC024226	SCBDP4ZG1TC024057
SCBCR2ZG3TC024295	SCBDN33S4TC024275	SCBDP4ZG5TC024059
SCBCR2ZG5TC024203	SCBDN33S5TC024219	SCBDP4ZG5TC024076
SCBDM33S0TC024261	SCBDN33S7TC024254	SCBDP4ZG6TC024233
SCBDM33S3TC024240	SCBDP4ZG4TC024196	SCBDR4ZG7TC024140
SCBDM33S8TC024279	SCBDP4ZG5TC024272	SCBCM13S2TC024181
SCBDP4ZG5TC024286	SCBDP4ZG6TC024152	SCBCM13S7TC024130
SCBDP4ZG8TC024265	SCBDP4ZG7TC024189	SCBCM13S9TC024176
SCBDR4ZG0TC024237	SCBDP4ZGXTTC024185	SCBCM13SXTTC024087
SCBDR4ZG4TC024323	SCBDR4ZG2TC024045	SCBCM13SXTTC024137
SCBDR4ZG5TC023973	SCBCM13S0TC024227	SCBCN13S4TC024180
SCBCM13S3TC023783	SCBCM13S1TC024236	SCBCN13S5TC024172
SCBCM13S4TC024263	SCBCM13S2TC024228	SCBCN13S6TC024097
SCBCM13S6TC024281	SCBCM13S3TC024190	SCBCP2ZG5TC024143
SCBCM13S7TC024239	SCBCM13S8TC024167	SCBCP2ZGXTTC024123
SCBCM13S9TC024257	SCBCM13SXTTC024171	SCBCP2ZGXTTC024199
SCBCN13S0TC024080	SCBCM13SXTTC024221	SCBCR2ZG8TC024177
SCBCN13S2TC024114	SCBCN13S1TC024184	SCBDN33S0TC024175
SCBCN13S2TC024243	SCBCN13S4TC024213	SCBDP4ZG6TC024216
SCBCN13S2TC024274	SCBCN13SXTTC024197	SCBDP4ZG9TC023707
SCBCN13S3TC024235	SCBCP2ZG0TC023921	SCBCM13S0TC024096
SCBCN13S3TC024266	SCBCR2ZG8TC023949	SCBCM13S2TC023824
SCBCN13S9TC024224	SCBDM33S2TC024178	SCBCM13S2TC024150
SCBCP2ZG0TC024194	SCBDM33S5TC024207	SCBCM13S3TC024111

SCBCM13S3TC024173	SCBDM33S3TC024027	SCBDN33S6TC023905
SCBCM13S6TC023860	SCBDM33S5TC024109	SCBDP4ZG3TC023993
SCBCM13S7TC023866	SCBDM33S6TC024104	SCBDP4ZG4TC024070
SCBCM13S7TC024113	SCBDM33S9TC024078	SCBDP4ZG5TC024112
SCBCN13S0TC024063	SCBDN33S4TC024082	SCBDP4ZG8TC023942
SCBCN13S5TC024141	SCBDP4ZG0TC024101	SCBDP4ZG9TC024050
SCBCN13S7TC024089	SCBDP4ZG4TC024148	SCBDR4ZG8TC024065
SCBCP2ZG0TC024146	SCBDP4ZG6TC024068	SCBCM13S6TC023969
SCBCP2ZG4TC024151	SCBDP4ZG6TC024135	SCBCM13S6TC024023
SCBCP2ZG6TC024054	SCBDP4ZG7TC024127	SCBCM13S7TC023897
SCBCR2ZG9TC024110	SCBDR4ZG9TC024091	SCBCM13SXTC024011
SCBDM33S9TC024131	SCBCM13S4TC023971	SCBCM13SXTC024042
SCBDN33SXTC024118	SCBCM13S7TC024029	SCBCN13S3TC024073
SCBDP4ZG4TC024098	SCBCM13SXTC024056	SCBCN13S5TC024009
SCBCM13S0TC024079	SCBCN13S0TC023995	SCBCP2ZG0TC024034
SCBCM13S1TC024088	SCBCN13S0TC024094	SCBCP2ZG1TC024060
SCBCM13S2TC024052	SCBCN13S2TC023979	SCBCP2ZG3TC023976
SCBCM13S2TC024116	SCBCN13S6TC024066	SCBCP2ZG3TC024075
SCBCM13S3TC023959	SCBCN13S8TC024005	SCBCR2ZG0TC024044
SCBCM13S4TC024036	SCBCN13S8TC024103	SCBCR2ZG7TC024039
SCBCM13S7TC023964	SCBCN13SXTC024085	SCBDM33S7TC023883
SCBCM13S7TC023981	SCBCP2ZG0TC023711	SCBDN33S3TC023859
SCBCM13S9TC023884	SCBCP2ZG5TC023798	SCBDN33S7TC024030
SCBCM13S9TC023951	SCBCP2ZG5TC024031	SCBDN33S8TC024053
SCBCM13S9TC024128	SCBCP2ZG8TC024069	SCBDP4ZG2TC023984
SCBCN13S1TC024105	SCBCP2ZG8TC024122	SCBDP4ZG5TC023719
SCBCN13S2TC024100	SCBCP2ZG9TC024016	SCBDP4ZG5TC023977
SCBCN13S2TC024145	SCBCP2ZGXTC024025	SCBDP4ZG5TC024014
SCBCP2ZG8TC024072	SCBDM33S2TC023970	SCBDP4ZG6TC024006
SCBCP2ZGXTC024008	SCBDM33S3TC024061	SCBDP4ZG6TC024037
SCBCR2ZG2TC024126	SCBDM33S9TC023786	SCBDP4ZG6TC024040

SCBDP4ZG8TC023987	SCBDP4ZG4TC023811	SCBCN13S6TC023791
SCBDP4ZG8TC024024	SCBDP4ZG4TC023940	SCBCP2ZG2TC023919
SCBDP4ZG9TC024047	SCBDP4ZG5TC023980	SCBCP2ZG2TC023936
SCBDR4ZG4TC023771	SCBDP4ZG7TC023902	SCBCP2ZG6TC023938
SCBCM13S8TC023827	SCBDP4ZG7TC023950	SCBCP2ZG8TC023911
SCBCM13S8TC023939	SCBDP4ZGXTTC023845	SCBCP2ZG9TC023822
SCBCN13S6TC024021	SCBDR4ZG2TC023932	SCBCR2ZG5TC023892
SCBCP2ZG4TC024019	SCBCM13S1TC023961	SCBDJ33S9TC023909
SCBCP2ZG7TC023835	SCBCM13S2TC023953	SCBDM33S2TC023886
SCBCP2ZG8TC024041	SCBCN13S5TC023829	SCBDM33S9TC023805
SCBDM33S0TC023840	SCBCN13S9TC023879	SCBDN33S6TC023838
SCBDP4ZG2TC024004	SCBCP2ZG1TC023846	SCBDP4ZG0TC023935
SCBDP4ZG5TC023946	SCBCP2ZG2TC023967	SCBDP4ZG3TC023802
SCBDP4ZG9TC023867	SCBCP2ZG3TC023864	SCBCM13S2TC023922
SCBDR4ZG6TC023996	SCBCP2ZG3TC023945	SCBCM13S5TC023901
SCBCM13S0TC023997	SCBCP2ZG3TC023962	SCBCM13S6TC023907
SCBCM13S2TC023872	SCBCP2ZG5TC023820	SCBCP2ZG2TC023760
SCBCM13S4TC023999	SCBCP2ZG6TC023941	SCBCP2ZG3TC023914
SCBCM13S8TC023889	SCBCP2ZG8TC023925	SCBCP2ZG4TC023887
SCBCM13S9TC024002	SCBCP2ZGXTTC023974	SCBCP2ZG6TC023874
SCBCN13S0TC023947	SCBDM33S4TC023937	SCBCP2ZG7TC023933
SCBCN13S3TC023957	SCBDM33S6TC023955	SCBCR2ZG2TC023882
SCBCN13S3TC023991	SCBDM33S9TC023920	SCBCR2ZG9TC023779
SCBCN13S4TC023904	SCBDN33S9TC023963	SCBDM33S2TC023855
SCBCN13S5TC023913	SCBDP4ZG1TC023944	SCBDM33S9TC023836
SCBCN13S7TC023900	SCBDP4ZG3TC023928	SCBDM33S9TC023898
SCBCN13SXTTC023986	SCBDP4ZG9TC023917	SCBDN33S0TC023799
SCBCP2ZG1TC023989	SCBDR4ZG1TC023873	SCBDP4ZG4TC023923
SCBCP2ZG7TC023916	SCBDR4ZG7TC023876	SCBDP4ZG5TC023896
SCBCR2ZG9TC023927	SCBCM13S1TC023877	SCBDP4ZG8TC023777
SCBDM33S6TC023714	SCBCM13S5TC023851	SCBDP4ZGXTTC023862

SCBDP4ZGXTC023893	SCBDP4ZG7TC023821	SCBCP2ZG5TC023736
SCBDP4ZGXTC023912	SCBDP4ZGXTC023795	SCBCP2ZG7TC023690
SCBDP4ZGXTC023926	SCBDP4ZGXTC023828	SCBCP2ZG7TC023706
SCBDR4ZG1TC023890	SCBDR4ZG0TC023833	SCBCP2ZG7TC023723
SCBDR4ZG5TC023746	SCBCM13S3TC023699	SCBCP2ZGXTC023764
SCBCN13S5TC023720	SCBCM13S4TC023842	SCBCP2ZGXTC023778
SCBCR2ZG0TC023895	SCBCM13S6TC023857	SCBCR2ZG0TC023718
SCBDM33S2TC023774	SCBCN13S7TC023816	SCBCR2ZG1TC023775
SCBCM13S0TC023854	SCBCN13S9TC023848	SCBCR2ZG3TC023695
SCBCM13S1TC023751	SCBCP2ZG2TC023788	SCBCR2ZG3TC023745
SCBCM13SXTTC023831	SCBCP2ZG6TC023762	SCBCR2ZG6TC023738
SCBCP2ZG0TC023806	SCBCP2ZG8TC023794	SCBCR2ZG7TC023702
SCBCP2ZG0TC023837	SCBCP2ZG9TC023769	SCBCR2ZG8TC023692
SCBCP2ZG0TC023868	SCBDM33S4TC023792	SCBCR2ZGXTC023709
SCBCP2ZG1TC023698	SCBDM33SXTTC023747	SCBDM33S0TC023742
SCBCP2ZG1TC023801	SCBDP4ZG1TC023703	SCBDM33S4TC023789
SCBCP2ZG5TC023834	SCBDP4ZG1TC023765	SCBDM33S9TC023691
SCBCP2ZG7TC023754	SCBDP4ZG3TC023735	SCBDN33S1TC023780
SCBCP2ZG8TC023813	SCBDP4ZG6TC023759	SCBDN33S7TC023752
SCBCR2ZG2TC023803	SCBDP4ZGXTC023733	SCBDP4ZG2TC023726
SCBCR2ZG3TC023812	SCBDR4ZG4TC023818	SCBDP4ZG6TC023700
SCBCR2ZG9TC023796	SCBCM13S5TC023767	SCBDP4ZG8TC023729
SCBDM33S1TC023815	SCBCM13S6TC023809	SCBDR4ZG1TC023694
SCBDM33S9TC023870	SCBCM13S7TC023785	SCBDR4ZG7TC023716
SCBDM33SXTTC023697	SCBCM13S9TC023772	SCBCM13S1TC023734
SCBDP4ZG1TC023880	SCBCN13S1TC023732	SCBCM13S6TC023731
SCBDP4ZG3TC023850	SCBCN13S3TC023781	SCBCM13S9TC023741
SCBDP4ZG4TC023808	SCBCN13S9TC023817	SCBCN13S4TC023708
SCBDP4ZG4TC023825	SCBCP2ZG2TC023743	SCBDP4ZG9TC023495
SCBDP4ZG5TC023722	SCBCP2ZG2TC023757	SCBCN13S4TC023725
SCBDP4ZG6TC023843	SCBCP2ZG3TC023704	SCBCN13S5TC023748

SCBCN13S8TC023727

SCBDM33S2TC023712

SCBDN33S4TC023739

SCBDM33S5TC023493