

# FS016: Eaton Endurant MTM Loose Rail Cap Screws

11/14/2025

[Edit](#) [Clone](#)

FS016

Eaton Endurant MTM Loose Rail Cap Screws

## Section

Transmission - 26

## Subject

Eaton Endurant MTM Loose Rail Cap Screws

## Condition

Certain chassis equipped with an Eaton Endurant 12-speed transmission have Mechatronic Transmission Module (MTM) rail cylinder cap screws that could become loose. This may cause the transmission not to shift and the transmission service lamp to illuminate.

Repair procedure is now available.

## Chassis Affected

495 US vehicles, model years 2022–2023, model T680 / W990, built from 05/11/2021 through 06/28/2022, and equipped with an Eaton Endurant 12-speed transmission that has an MTM serial number in which the five bolded digits are sequentially less than 22342. (12S**22342**145012)

## Action

### Campaign

Service all affected chassis that enter your dealership, even if the customer has no issue with the chassis.

1. In Service Management, select campaign **FS016** to add it to the case. If the unit is released back into service without performing the repair, make sure to also release the campaign in Service Management.
2. If you are not using Service Management to start repair orders, review SIR for “Complete” next to the **FS016** campaign code prior to performing this repair.
3. Refer to the Procedure and Links sections for detailed instructions on this repair.

## Warranty


Starting on **11/14/2025** and through standard Eaton Endurant HD warranty coverage of 5 years / 750,000 miles (excludes extended warranty), repairs must be completed before campaign expiration of

**12/01/2026.** Kenworth will pay for parts at dealer net plus applicable mark-up and labor.

**i** NOTE

If the Mechatronic Transmission Module has an Eaton/Cummins Joint Venture (ECJV) label, the repair has already been completed. Repairs should not be performed on a transmission that has the ECJV label.

If the Warranty Return Center receives an MTM with an ECJV label under this campaign, it will be denied.



The image shows a rectangular label with a QR code on the left. To the right of the QR code, the text reads: "EATON Cummins", "PA-10000715R", "VKA", and "S12518003162386". The serial number "S12518003162386" has the digits "22342" in bold. To the right of the label, there are two horizontal lines with numbers "1" and "2" next to them, pointing to the top and bottom edges of the label respectively.

- **0.1 hours** labor for inspecting the MTM label and finding that it is an ECJV label or the five bolded digits of the serial number are 22342 or sequentially higher (12S**22342**145012) and no repairs are

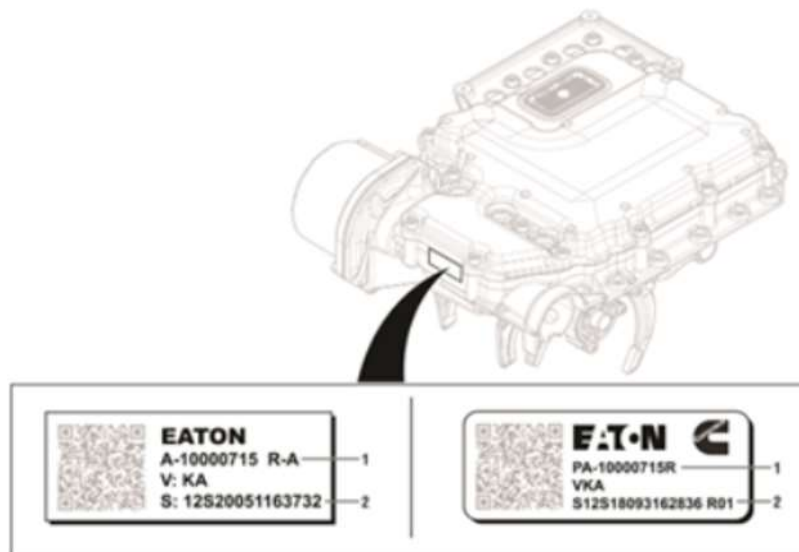
required. Use Recommended Repair Code **FS016A**.

- **6.2 hours** labor for generating a Service Activity Report, R&I Transmission, R&I MTM, perform MTM Rail Service Procedure, and perform road test. Use Recommended Repair Code **FS016B**.
- If any fault code diagnostics are required, they must be filed as a supplemental claim.
- File an additional claim for extraordinary circumstances. A recommended repair for standard labor must be filed first.
- File the claim within 14 days in accordance with the warranty policy.
- Cross division repairs are not allowed.

**Take-Off Parts Disposition:** Destroy take-off parts 30 days after claim is paid.

PRWS CLAIM CODING			
<b>Campaign Code:</b>	FS016	<b>Campaign Type:</b>	Field Repair
<b>Claim Category:</b>	Truck	<b>Repair Type:</b>	Proactive
<b>Customer Concern Code:</b>	062	<b>Causal Code:</b>	62
<b>Corrective Action Code:</b>	32	<b>Responsibility Code:</b>	CampSupp
<b>Failure Location:</b>	026-015-105	<b>Causal Part:</b>	E74-1020
<b>Supplier Code:</b>	21888AB	<b>SRT Code:</b>	<p><b>B25-29A</b>  <b>0.1 hours</b>                      Inspect the MTM label per the bulletin procedure.</p> <p><b>B25-29B</b>  <b>6.2 hours</b>                      Generate a Service Activity Report, R&amp;I Transmission, R&amp;I MTM, perform MTM Rail Service Procedure,</p>





*MTM Label Location*

- If it is an Eaton/Cummins Joint Venture label (pictured below) or the five bolded digits of the MTM serial number are 22342 or sequentially higher (12S**22342**145012), then no repairs are required. File a claim for inspecting the MTM label.



*Eaton/Cummins Joint Venture Label*

- If it is an Eaton label (pictured below) and the five bolded digits of the MTM serial number are sequentially lower than 22342 (12S**22342**145012), then proceed to step 2.



*Eaton Label*

2. Create an Eaton Service Activity Report.

3. Refer to the Eaton **TRSM0950** procedures in the Links section below.

Perform all of the following procedures:

- Transmission R&I Procedure.
- Mechatronic Transmission Module R&I Procedure.
- MTM Rail B C and D Cylinder Procedure.
  - Disregard Special Instructions that state “Perform this entire procedure only if guided here by MTM Rail B, C, and D Cylinder Inspection Procedure.” – **This is a proactive**

**repair procedure and is not dependent on inspection results.**

- Unless applicable fault codes are present, do not proceed past step 22 in the “Assemble Rail C and D” section of the procedure.
4. Fault code diagnostics are not covered under this bulletin unless the fault codes are specifically called out in **TAIB-0994**.
  5. Once all applicable procedural steps in **TRSM0950** are completed, perform a road test to verify the repair.

## Attachments

---

[TRSM0950: Transmission R&I Procedure](#)

[TRSM0950: Mechatronic Transmission Module R&I Procedure](#)

[TRSM: MTM Rail B C and D Cylinder Procedure](#)

Only reference TAIB 0994 to determine if applicable fault codes are present.

[Eaton TAIB 0994](#)

# FS016: Eaton Endurant MTM Loose Rail Cap Screws

11/14/2025

[Edit](#) [Clone](#)

FS016

Eaton Endurant MTM Loose Rail Cap Screws

## Section

Transmission - 26

## Subject

Eaton Endurant MTM Loose Rail Cap Screws

## Condition

Certain chassis equipped with an Eaton Endurant 12-speed transmission have Mechatronic Transmission Module (MTM) rail cylinder cap screws that could become loose. This may cause the transmission not to shift and the transmission service lamp to illuminate.

Repair procedure is now available.

## Chassis Affected

2,059 US vehicles, model years 2022–2023, models 567 and 579, built from 05/12/2021 through 06/30/2022, and equipped with an Eaton Endurant 12-speed transmission that has an MTM serial number in which the five bolded digits are sequentially less than 22342. (12S**22342**145012)

## Action

### Campaign

Service all affected chassis that enter your dealership, even if the customer has no issue with the chassis.

1. In Service Management, select campaign **FS016** to add it to the case. If the unit is released back into service without performing the repair, make sure to also release the campaign in Service Management.
2. If you are not using Service Management to start repair orders, review SIR for “Complete” next to the **FS016** campaign code prior to performing this repair.
3. Refer to the Procedure and Links sections for detailed instructions on this repair.

## Warranty


Starting on **11/14/2025** and through standard Eaton Endurant HD warranty coverage of 5 years / 750,000 miles (excludes extended warranty), repairs must be completed before campaign expiration of

**12/01/2026.** Peterbilt will pay for parts at dealer net plus applicable mark-up and labor.

**i** NOTE

If the Mechatronic Transmission Module has an Eaton/Cummins Joint Venture (ECJV) label, the repair has already been completed. Repairs should not be performed on a transmission that has the ECJV label.

If the Warranty Return Center receives an MTM with an ECJV label under this campaign, it will be denied.



PA-10000715R  
VKA  
S12518003162386

1  
2

- **0.1 hours** labor for inspecting the MTM label and finding that it is an ECJV label or the five bolded digits of the serial number are 22342 or sequentially higher (12S**22342**145012) and no repairs are

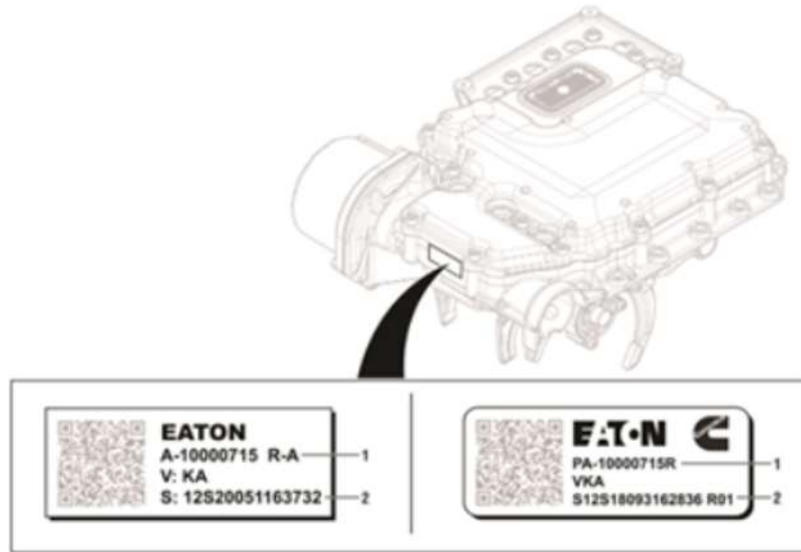
required. Use Recommended Repair Code **FS016A**.

- **6.2 hours** labor for generating a Service Activity Report, R&I Transmission, R&I MTM, perform MTM Rail Service Procedure, and perform road test. Use Recommended Repair Code **FS016B**.
- If any fault code diagnostics are required, they must be filed as a supplemental claim.
- File an additional claim for extraordinary circumstances. A recommended repair for standard labor must be filed first.
- File the claim within 14 days in accordance with the warranty policy.
- Cross division repairs are not allowed.

**Take-Off Parts Disposition:** Destroy take-off parts 30 days after claim is paid.

PRWS CLAIM CODING			
<b>Campaign Code:</b>	FS016	<b>Campaign Type:</b>	Field Repair
<b>Claim Category:</b>	Truck	<b>Repair Type:</b>	Proactive
<b>Customer Concern Code:</b>	062	<b>Causal Code:</b>	62
<b>Corrective Action Code:</b>	32	<b>Responsibility Code:</b>	SUP
<b>Failure Location:</b>	026-015-105	<b>Causal Part:</b>	E74-1020
<b>Supplier Code:</b>	21888AB	<b>SRT Code:</b>	<p><b>B25-29A</b>  <b>0.1 hours</b>                      Inspect the MTM label per the bulletin procedure.</p> <p><b>B25-29B</b>  <b>6.2 hours</b>                      Generate a Service Activity Report, R&amp;I Transmission, R&amp;I MTM, perform MTM Rail Service Procedure,</p>





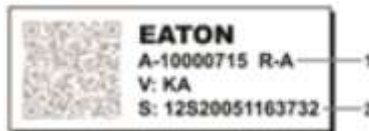
MTM Label Location

- If it is an Eaton/Cummins Joint Venture label (pictured below) or the five bolded digits of the MTM serial number are 22342 or sequentially higher (12S**22342**145012), then no repairs are required. File a claim for inspecting the MTM label.



Eaton/Cummins Joint Venture Label

- If it is an Eaton label (pictured below) and the five bolded digits of the MTM serial number are sequentially lower than 22342 (12S**22342**145012), then proceed to step 2.



Eaton Label

2. Create an Eaton Service Activity Report.

3. Refer to the Eaton **TRSM0950** procedures in the Links section below.

Perform all of the following procedures:

- Transmission R&I Procedure.
- Mechatronic Transmission Module R&I Procedure.
- MTM Rail B C and D Cylinder Procedure.
  - Disregard Special Instructions that state “Perform this entire procedure only if guided here by MTM Rail B, C, and D Cylinder Inspection Procedure.” – **This is a proactive**

**repair procedure and is not dependent on inspection results.**

- Unless applicable fault codes are present, do not proceed past step 22 in the “Assemble Rail C and D” section of the procedure.
4. Fault code diagnostics are not covered under this bulletin unless the fault codes are specifically called out in **TAIB-0994**.
  5. Once all applicable procedural steps in **TRSM0950** are completed, perform a road test to verify the repair.

## Attachments

---

[TRSM0950: Transmission R&I Procedure](#)

[TRSM0950: Mechatronic Transmission Module R&I Procedure](#)

[TRSM: MTM Rail B C and D Cylinder Procedure](#)

Only reference TAIB 0994 to determine if applicable fault codes are present.

[Eaton TAIB 0994](#)