

Field campaign

Topic	BiL 108.2 Software Update Continental GT/GTC 26MY (SC25/37)
Market area	Bentley: worldwide (2WBE),China 796 VW Import Comp. Ltd (Vico), Beijing (6796)
Brand	Bentley
Transaction No.	2078560/3
Campaign number	ED65
Note	
Type	
US code	

Vehicle data

26MY Continental GT/GTC

Sales types

Type	MY	Brand	Designation	Engine code	Gearbox code	Final drive code
Z23*	2026	E		*	*	*
Z24*	2026	E		*	*	*

Documents

Document name
master.xml
sc2537vinlist.pdf

Notes

▼ [Repair instructions](#)

Technical background

Software updates must be applied to update the vehicles front and rear door control modules.

An enhancement has been implemented to the front and rear window control module parameters to reduce the likelihood of sporadic window drops. This update targets improved stability and reliability in window operation.

Affected Diagnostic Addresses:

- Address 42,52 (Front)
- Address 00BB, 00BC (Rear)



CAUTION

If Campaign ED59 is marked as an outstanding Campaign in ElsaPro, it must be completed before starting this update.

Remedy

The instructions within the 'Work' section **must** be conducted to completion.

Customer notification

Please ensure all applicable instructions are conducted at the nearest opportunity.

Warranty

SVM Update Time

Claim type: 790 or 710

Service number: ED65

Damage code: 0066

Criteria:01

Labour Operation Code: 01 51 00 00

Time: As per ODIS log (Must not exceed 100 TU)

Additional Time Allowance

A 100TU allowance may be claimed only if a SVM update fails to complete successfully. This is intended to cover additional diagnostic or recovery work directly resulting from the failed update. It must not be used for unrelated delays or issues.

ODIS logs must be attached to a DISS ticket for evidence of failure. Claims without valid documentation will be rejected. Warranty Adjudicators will review associated ODIS logs and DISS queries to determine actual software update time.

Parts

Not Applicable

Parts supply

Not Applicable

Parts despatch control

Not Applicable

Repair instructions



Technical background

Software updates must be applied to update the vehicles front and rear door control modules.

An enhancement has been implemented to the front and rear window control module parameters to reduce the likelihood of sporadic window drops. This update targets improved stability and reliability in window operation.

Affected Diagnostic Addresses:

- Address 42,52 (Front)
- Address 00BB, 00BC (Rear)

CAUTION

If Campaign ED59 is marked as an outstanding Campaign in ElsaPro, it must be completed before starting this update.

Check

Check if the vehicle is already listed as repaired in "Repair history" (in ElsaPro).

Please also refer to the "Identification" section and check if a paint identification mark is evident in the vehicle.

If the vehicle is not shown in ElsaPro as repaired, and the identification mark is not present, please conduct the instructions within the 'Work' section to completion

Parts

Not Applicable

Work

CAUTION

The Bentley ODIS-S Brand Version MUST be at least 2.35.4 (or higher).

CAUTION

Before conducting the onward instructions, the operative **MUST** recheck the communication method in ODIS and ensure that DoIP is selected before proceeding. Within ODIS-S, perform the following:

- On the right hand side, select the "Admin" tile (Within 'Operating modes')
- Select "GFF sequence" (Within 'General information' section)
- Under the "Selection of Communication path" drop-down menu, select "Only permit DoIP communication".

CAUTION

DO NOT, UNDER ANY CIRCUMSTANCES, ATTEMPT TO CONDUCT THE SOFTWARE UPDATE VIA THE CAN NETWORK. ONLY DoIP SHOULD BE USED WHEN PERFORMING THE SVM UPDATE.

CAUTION

You **MUST ONLY** use the Diagnosis Interface VAS 6154 (WiFi Diagnostic Tool) in USB OPERATION or the CABLE-CONNECTED VAS 5055 for the reprogramming (updating) of the control units.

- If neither of these units are available, the VAS 5054 (A) may be used in USB MODE.
- **DO NOT** under any circumstances use a Bluetooth connection to conduct the reprogramming (updating) of any control units.

Battery Charger

CAUTION

ONLY Chargers that meet the approved specification on the Mandatory Equipment List (available on the Bentley Hub) **MUST** be used.

- The charger must be set to a mode where a **MINIMUM** of 90a is supplied to the battery during the process. Typically, this is known as 'Power Supply Mode' or 'DIAG+ Mode'.
- A voltage of exactly 14.8v must be set and maintained throughout the process.
- Please refer to the manual to ensure that these requirements are met before beginning any SVM update

Preparation Before Update



WARNING

Hybrid Vehicles use a High Voltage System and therefore **MUST ONLY** be worked on by suitable personnel

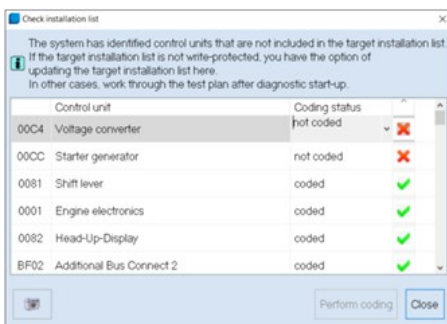


CAUTION

During the update, switch off all unnecessary consumers. For example, ventilation, seat heaters, interior illumination, exterior lights ect.

Conduct a full guided fault find of the vehicle.

If a 'Check Installation List' pop-up appears, select 'close' (see below image)



Referring to TPI 2075920, address any unknown faults **BEFORE** conducting any of the below updates.

Ensure that the correct battery charger is connected to the vehicle. – Refer to the "Battery Charger" Section above.

SVM Code Input

1. Navigate to 'SVM – Code Input' and enter the SVM Code: 372FRWN01
2. On the next screen, ensure that the SVM code displayed is correct.
3. You will be shown the communication type. **This MUST be set to "DoIP"**.
 - a. If "DoIP" is not selected, select option 3 until the communication type is set to "DoIP".
4. After ensuring DoIP is selected, and a suitable battery charger is connected, select Option 1 – "Yes".
 - a. From here, all control modules will be interrogated and the SVM action will take place.
5. Ensure that the diagnostic device remains connected for the duration of the update.
6. Follow all on-screen prompts until the program ends.

a. If you have a prompt stating there is no communication established with 00CC, select done/continue.

7. Follow the on-screen instructions to completion.

8. If you are presented with the following prompt “Control unit will not configure”. Select Option 1 cancel configuration of the control unit.

NOTICE

Do not execute the SVM code re-run test in verification mode.

9. If you are presented with this screen (Fig 3) at the end of the update, complete a readID of the following modules and check the ZDC Part Numbers on the ECU(s): 0042, 0052, 00BB, 00BC

- 0042 - V03935476EP
- 0052 - V03935476EQ
- 00BB - V03935476ET
- 00BC - V03935476EU

If the modules report the ZDCs above the update was successful. Please continue to step 11.

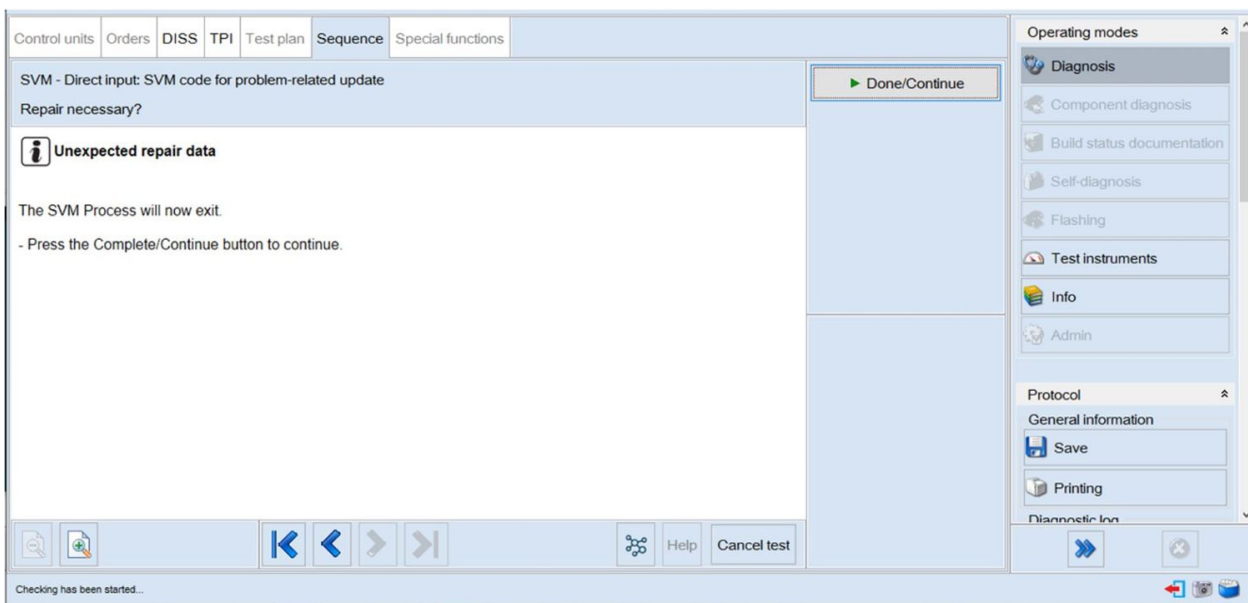


Fig 3

10. If you encounter any errors during the update, please refer to TPI 2078962 - 'ODIS Error Message – Best Practice When Performing Baseline (BiL) Updates'.

a. Please raise a FULL TECHNICAL DISS query.

b. Customer Statement: “ED65 Support”

c. Workshop Findings: Give a summary of the error encountered and ensure that the latest Guided Fault Finding log is submitted online.

11. After successful completion of the update, perform the following.

- a. Turn off the ignition.
- b. Remove all equipment from the car (Diagnostic tester/dongle, battery charger, keys).
- c. Close all doors, windows, bonnet and boot lid.
- d. Lock the vehicle to perform a CAN-BUS sleep (wait 15 minutes).

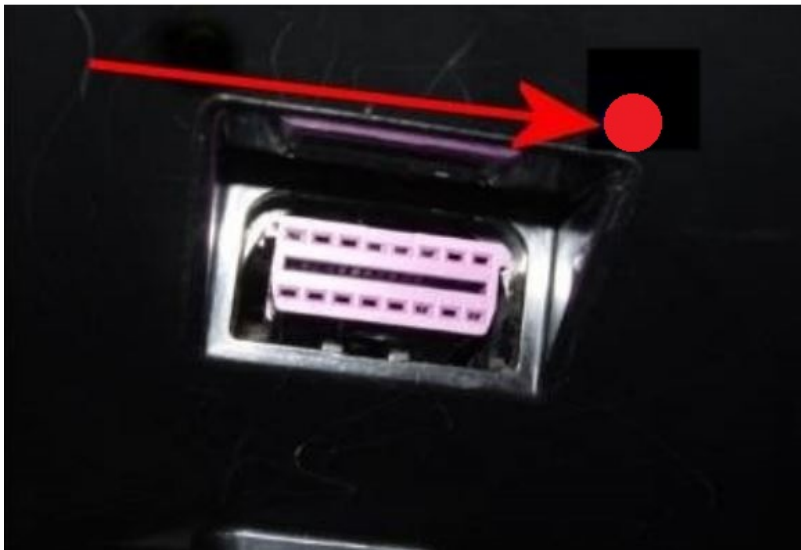
12. After 15 minutes, unlock and open the driver's door. Turn on the ignition, re-connect the battery charger and diagnostic dongle.

13. Re-run guided fault finding and clear DTCs. If any faults are present, refer to TPI 2075920. If any other faults are present, please raise a full DISS query with a full GFF log uploaded online stating the error encountered.

Identification

Once the applicable action has been conducted, the operative must submit a warranty claim as this will show the service campaign action as complete within Elsa Pro "Repair history".

You must also add a red paint mark adjacent to the OBD port



SCBCB13S0TC024332	SCBCB13S7TC024411	SCBCM13S1TC023751
SCBCB13S0TC024346	SCBCB13S7TC024425	SCBCM13S1TC023877
SCBCB13S0TC024444	SCBCB13S7TC024439	SCBCM13S1TC023961
SCBCB13S0TC024816	SCBCB13S8TC024322	SCBCM13S1TC024088
SCBCB13S1TC024467	SCBCB13S8TC024451	SCBCM13S1TC024236
SCBCB13S1TC024470	SCBCB13S8TC024837	SCBCM13S1TC024270
SCBCB13S1TC024579	SCBCB13S9TC024460	SCBCM13S1TC024284
SCBCB13S1TC024680	SCBCB13S9TC024779	SCBCM13S1TC024348
SCBCB13S1TC024856	SCBCB13SXTTC024421	SCBCM13S1TC024382
SCBCB13S2TC024350	SCBCB13SXTTC024483	SCBCM13S1TC024687
SCBCB13S2TC024364	SCBCB13SXTTC024757	SCBCM13S1TC024768
SCBCB13S2TC024395	SCBCD13S3TC024318	SCBCM13S2TC023824
SCBCB13S2TC024476	SCBCD13S3TC024724	SCBCM13S2TC023872
SCBCB13S2TC024526	SCBCD13S8TC024427	SCBCM13S2TC023922
SCBCB13S2TC024848	SCBCG13S1TC024521	SCBCM13S2TC023953
SCBCB13S3TC024728	SCBCG13S8TC024340	SCBCM13S2TC024052
SCBCB13S4TC024396	SCBCJ13S6TC024712	SCBCM13S2TC024116
SCBCB13S4TC024463	SCBCJ1ZG7TC024351	SCBCM13S2TC024150
SCBCB13S4TC024589	SCBCM13S0TC023854	SCBCM13S2TC024181
SCBCB13S4TC024592	SCBCM13S0TC023983	SCBCM13S2TC024228
SCBCB13S4TC024625	SCBCM13S0TC023997	SCBCM13S2TC024603
SCBCB13S4TC024804	SCBCM13S0TC024079	SCBCM13S2TC024777
SCBCB13S4TC024835	SCBCM13S0TC024096	SCBCM13S3TC023699
SCBCB13S5TC024133	SCBCM13S0TC024227	SCBCM13S3TC023783
SCBCB13S5TC024455	SCBCM13S0TC024356	SCBCM13S3TC023959
SCBCB13S5TC024472	SCBCM13S0TC024390	SCBCM13S3TC024092
SCBCB13S5TC024830	SCBCM13S0TC024714	SCBCM13S3TC024111
SCBCB13S6TC024304	SCBCM13S0TC024762	SCBCM13S3TC024173
SCBCB13S6TC024402	SCBCM13S0TC024793	SCBCM13S3TC024187
SCBCB13S6TC024786	SCBCM13S0TC024891	SCBCM13S3TC024190
SCBCB13S7TC024375	SCBCM13S1TC023734	SCBCM13S3TC024416

SCBCM13S4TC023842	SCBCM13S6TC024281	SCBCM13S9TC024176
SCBCM13S4TC023971	SCBCM13S6TC024491	SCBCM13S9TC024209
SCBCM13S4TC023999	SCBCM13S6TC024538	SCBCM13S9TC024257
SCBCM13S4TC024036	SCBCM13S6TC024653	SCBCM13S9TC024520
SCBCM13S4TC024263	SCBCM13S7TC023785	SCBCM13S9TC024825
SCBCM13S4TC024294	SCBCM13S7TC023866	SCBCM13S9TC024839
SCBCM13S4TC024358	SCBCM13S7TC023897	SCBCM13SXTC023831
SCBCM13S4TC024361	SCBCM13S7TC023964	SCBCM13SXTC024011
SCBCM13S4TC024747	SCBCM13S7TC023981	SCBCM13SXTC024042
SCBCM13S5TC023767	SCBCM13S7TC024029	SCBCM13SXTC024056
SCBCM13S5TC023851	SCBCM13S7TC024046	SCBCM13SXTC024087
SCBCM13S5TC023901	SCBCM13S7TC024113	SCBCM13SXTC024090
SCBCM13S5TC024191	SCBCM13S7TC024130	SCBCM13SXTC024137
SCBCM13S5TC024210	SCBCM13S7TC024239	SCBCM13SXTC024171
SCBCM13S5TC024255	SCBCM13S7TC024337	SCBCM13SXTC024221
SCBCM13S5TC024269	SCBCM13S7TC024368	SCBCM13SXTC024381
SCBCM13S5TC024532	SCBCM13S7TC024435	SCBCM13SXTC024431
SCBCM13S5TC024546	SCBCM13S7TC024516	SCBCM13SXTC024512
SCBCM13S5TC024563	SCBCM13S7TC024595	SCBCM13SXTC024722
SCBCM13S5TC024613	SCBCM13S7TC024631	SCBCM13SXTC024753
SCBCM13S5TC024644	SCBCM13S7TC024788	SCBCM1ZG0TC024733
SCBCM13S5TC024675	SCBCM13S8TC023827	SCBCM1ZG2TC024510
SCBCM13S5TC024756	SCBCM13S8TC023889	SCBCM1ZG2TC024541
SCBCM13S5TC024871	SCBCM13S8TC023939	SCBCM1ZG2TC024605
SCBCM13S6TC023731	SCBCM13S8TC024167	SCBCM1ZG2TC024751
SCBCM13S6TC023809	SCBCM13S9TC023741	SCBCM1ZG2TC024832
SCBCM13S6TC023857	SCBCM13S9TC023772	SCBCM1ZG3TC024533
SCBCM13S6TC023860	SCBCM13S9TC023884	SCBCM1ZG4TC024671
SCBCM13S6TC023907	SCBCM13S9TC023951	SCBCM1ZG4TC024704
SCBCM13S6TC023969	SCBCM13S9TC024002	SCBCM1ZG4TC024718
SCBCM13S6TC024023	SCBCM13S9TC024128	SCBCM1ZG4TC024735

SCBCM1ZG5TC024372	SCBCN13S1TC024508	SCBCN13S5TC023930
SCBCM1ZG5TC024419	SCBCN13S1TC024623	SCBCN13S5TC024009
SCBCM1ZG5TC024503	SCBCN13S2TC023979	SCBCN13S5TC024141
SCBCM1ZG5TC024629	SCBCN13S2TC024100	SCBCN13S5TC024172
SCBCM1ZG5TC024677	SCBCN13S2TC024114	SCBCN13S5TC024253
SCBCM1ZG5TC024730	SCBCN13S2TC024145	SCBCN13S5TC024298
SCBCM1ZG7TC024664	SCBCN13S2TC024243	SCBCN13S5TC024320
SCBCM1ZG7TC024809	SCBCN13S2TC024274	SCBCN13S5TC024379
SCBCM1ZG8TC024608	SCBCN13S2TC024310	SCBCN13S5TC024513
SCBCM1ZGXTC024156	SCBCN13S3TC023781	SCBCN13S5TC024706
SCBCM1ZGXTC024495	SCBCN13S3TC023957	SCBCN13S6TC023791
SCBCM1ZGXTC024528	SCBCN13S3TC023991	SCBCN13S6TC024021
SCBCM1ZGXTC024562	SCBCN13S3TC024073	SCBCN13S6TC024066
SCBCM1ZGXTC024643	SCBCN13S3TC024235	SCBCN13S6TC024097
SCBCM1ZGXTC024819	SCBCN13S3TC024266	SCBCN13S6TC024245
SCBCN13S0TC023947	SCBCN13S3TC024297	SCBCN13S6TC024827
SCBCN13S0TC023995	SCBCN13S3TC024333	SCBCN13S7TC023816
SCBCN13S0TC024063	SCBCN13S4TC023708	SCBCN13S7TC023900
SCBCN13S0TC024080	SCBCN13S4TC023725	SCBCN13S7TC024089
SCBCN13S0TC024094	SCBCN13S4TC023904	SCBCN13S7TC024335
SCBCN13S0TC024290	SCBCN13S4TC024163	SCBCN13S7TC024481
SCBCN13S0TC024404	SCBCN13S4TC024180	SCBCN13S8TC023727
SCBCN13S0TC024628	SCBCN13S4TC024213	SCBCN13S8TC024005
SCBCN13S0TC024659	SCBCN13S4TC024292	SCBCN13S8TC024103
SCBCN13S0TC024709	SCBCN13S4TC024342	SCBCN13S8TC024215
SCBCN13S0TC024743	SCBCN13S4TC024406	SCBCN13S8TC024277
SCBCN13S1TC023732	SCBCN13S4TC024650	SCBCN13S8TC024313
SCBCN13S1TC024105	SCBCN13S5TC023720	SCBCN13S8TC024568
SCBCN13S1TC024184	SCBCN13S5TC023748	SCBCN13S8TC024599
SCBCN13S1TC024315	SCBCN13S5TC023829	SCBCN13S9TC023817
SCBCN13S1TC024489	SCBCN13S5TC023913	SCBCN13S9TC023848

SCBCN13S9TC023879	SCBCP2ZG0TC024194	SCBCP2ZG4TC024229
SCBCN13S9TC024160	SCBCP2ZG0TC024289	SCBCP2ZG4TC024232
SCBCN13S9TC024224	SCBCP2ZG0TC024311	SCBCP2ZG4TC024280
SCBCN13S9TC024353	SCBCP2ZG0TC024633	SCBCP2ZG4TC024716
SCBCN13S9TC024448	SCBCP2ZG1TC023698	SCBCP2ZG5TC023736
SCBCN13S9TC024515	SCBCP2ZG1TC023801	SCBCP2ZG5TC023798
SCBCN13S9TC024773	SCBCP2ZG1TC023846	SCBCP2ZG5TC023820
SCBCN13SXTC023986	SCBCP2ZG1TC023989	SCBCP2ZG5TC023834
SCBCN13SXTC024085	SCBCP2ZG1TC024060	SCBCP2ZG5TC024031
SCBCN13SXTC024197	SCBCP2ZG1TC024107	SCBCP2ZG5TC024143
SCBCN13SXTC024376	SCBCP2ZG1TC024771	SCBCP2ZG5TC024241
SCBCN13SXTC024409	SCBCP2ZG1TC024799	SCBCP2ZG5TC024577
SCBCN13SXTC024474	SCBCP2ZG2TC023743	SCBCP2ZG6TC023762
SCBCN13SXTC024684	SCBCP2ZG2TC023757	SCBCP2ZG6TC023874
SCBCN13SXTC024720	SCBCP2ZG2TC023760	SCBCP2ZG6TC023938
SCBCN1ZG0TC024583	SCBCP2ZG2TC023788	SCBCP2ZG6TC023941
SCBCN1ZG1TC024432	SCBCP2ZG2TC023919	SCBCP2ZG6TC024054
SCBCN1ZG2TC024553	SCBCP2ZG2TC023936	SCBCP2ZG6TC024250
SCBCN1ZG3TC024545	SCBCP2ZG2TC023967	SCBCP2ZG6TC024314
SCBCN1ZG4TC024344	SCBCP2ZG3TC023704	SCBCP2ZG6TC024555
SCBCN1ZG4TC024604	SCBCP2ZG3TC023864	SCBCP2ZG6TC024667
SCBCN1ZG5TC024658	SCBCP2ZG3TC023914	SCBCP2ZG7TC023690
SCBCN1ZG6TC024328	SCBCP2ZG3TC023945	SCBCP2ZG7TC023706
SCBCN1ZG9TC024436	SCBCP2ZG3TC023962	SCBCP2ZG7TC023723
SCBCP2ZG0TC023711	SCBCP2ZG3TC023976	SCBCP2ZG7TC023754
SCBCP2ZG0TC023806	SCBCP2ZG3TC024075	SCBCP2ZG7TC023835
SCBCP2ZG0TC023837	SCBCP2ZG3TC024206	SCBCP2ZG7TC023916
SCBCP2ZG0TC023868	SCBCP2ZG3TC024691	SCBCP2ZG7TC023933
SCBCP2ZG0TC023921	SCBCP2ZG4TC023887	SCBCP2ZG7TC024287
SCBCP2ZG0TC024034	SCBCP2ZG4TC024019	SCBCP2ZG7TC024791
SCBCP2ZG0TC024146	SCBCP2ZG4TC024151	SCBCP2ZG8TC023794

SCBDM33S0TC023840	SCBDM33S4TC024585	SCBDM33S9TC023898
SCBDM33S0TC024230	SCBDM33S4TC024621	SCBDM33S9TC023920
SCBDM33S0TC024261	SCBDM33S4TC024666	SCBDM33S9TC024078
SCBDM33S0TC024518	SCBDM33S5TC023493	SCBDM33S9TC024131
SCBDM33S0TC024597	SCBDM33S5TC024109	SCBDM33S9TC024212
SCBDM33S0TC024602	SCBDM33S5TC024207	SCBDM33S9TC024226
SCBDM33S0TC024745	SCBDM33S6TC023714	SCBDM33S9TC024548
SCBDM33S1TC023815	SCBDM33S6TC023955	SCBDM33S9TC024565
SCBDM33S1TC024124	SCBDM33S6TC024104	SCBDM33SXTC023697
SCBDM33S1TC024155	SCBDM33S6TC024166	SCBDM33SXTC023747
SCBDM33S1TC024365	SCBDM33S6TC024300	SCBDM33SXTC024168
SCBDM33S1TC024611	SCBDM33S6TC024412	SCBDM33SXTC024378
SCBDM33S1TC024639	SCBDM33S6TC024443	SCBDM33SXTC024462
SCBDM33S2TC023712	SCBDM33S7TC023883	SCBDM3ZG2TC024247
SCBDM33S2TC023774	SCBDM33S7TC024144	SCBDM3ZG6TC024607
SCBDM33S2TC023855	SCBDM33S7TC024161	SCBDM3ZG8TC024480
SCBDM33S2TC023886	SCBDM33S7TC024385	SCBDM3ZG9TC024679
SCBDM33S2TC023970	SCBDM33S7TC024418	SCBDN33S0TC023799
SCBDM33S2TC024018	SCBDM33S7TC024497	SCBDN33S0TC024158
SCBDM33S2TC024035	SCBDM33S7TC024693	SCBDN33S0TC024175
SCBDM33S2TC024178	SCBDM33S8TC024170	SCBDN33S1TC023780
SCBDM33S2TC024388	SCBDM33S8TC024251	SCBDN33S3TC023859
SCBDM33S3TC023749	SCBDM33S8TC024279	SCBDN33S3TC024204
SCBDM33S3TC024027	SCBDM33S8TC024282	SCBDN33S3TC024493
SCBDM33S3TC024061	SCBDM33S8TC024363	SCBDN33S4TC023739
SCBDM33S3TC024240	SCBDM33S8TC024685	SCBDN33S4TC024082
SCBDM33S4TC023789	SCBDM33S9TC023691	SCBDN33S4TC024275
SCBDM33S4TC023792	SCBDM33S9TC023786	SCBDN33S4TC024454
SCBDM33S4TC023937	SCBDM33S9TC023805	SCBDN33S4TC024468
SCBDM33S4TC024182	SCBDM33S9TC023836	SCBDN33S4TC024485
SCBDM33S4TC024392	SCBDM33S9TC023870	SCBDN33S4TC024504

SCBDN33S5TC024219	SCBDP4ZG0TC024373	SCBDP4ZG4TC024196
SCBDN33S5TC024317	SCBDP4ZG0TC024437	SCBDP4ZG4TC024330
SCBDN33S5TC024446	SCBDP4ZG1TC023703	SCBDP4ZG4TC024408
SCBDN33S5TC024740	SCBDP4ZG1TC023765	SCBDP4ZG4TC024473
SCBDN33S6TC023838	SCBDP4ZG1TC023880	SCBDP4ZG4TC024487
SCBDN33S6TC023905	SCBDP4ZG1TC023944	SCBDP4ZG4TC024540
SCBDN33S6TC024536	SCBDP4ZG1TC024012	SCBDP4ZG4TC024697
SCBDN33S6TC024570	SCBDP4ZG1TC024057	SCBDP4ZG4TC024778
SCBDN33S6TC024701	SCBDP4ZG1TC024303	SCBDP4ZG4TC024814
SCBDN33S7TC023752	SCBDP4ZG1TC024429	SCBDP4ZG4TC024845
SCBDN33S7TC024030	SCBDP4ZG1TC024818	SCBDP4ZG5TC023719
SCBDN33S7TC024223	SCBDP4ZG2TC023726	SCBDP4ZG5TC023722
SCBDN33S7TC024254	SCBDP4ZG2TC023984	SCBDP4ZG5TC023896
SCBDN33S7TC024478	SCBDP4ZG2TC024004	SCBDP4ZG5TC023946
SCBDN33S7TC024660	SCBDP4ZG2TC024424	SCBDP4ZG5TC023977
SCBDN33S8TC024053	SCBDP4ZG2TC024794	SCBDP4ZG5TC023980
SCBDN33S8TC024201	SCBDP4ZG3TC023735	SCBDP4ZG5TC024000
SCBDN33S8TC024327	SCBDP4ZG3TC023802	SCBDP4ZG5TC024014
SCBDN33S9TC023963	SCBDP4ZG3TC023850	SCBDP4ZG5TC024059
SCBDN33S9TC024627	SCBDP4ZG3TC023928	SCBDP4ZG5TC024076
SCBDN33SXTTC024118	SCBDP4ZG3TC023993	SCBDP4ZG5TC024112
SCBDN33SXTTC024524	SCBDP4ZG3TC024349	SCBDP4ZG5TC024272
SCBDN33SXTTC024569	SCBDP4ZG3TC024769	SCBDP4ZG5TC024286
SCBDN3ZG5TC024689	SCBDP4ZG4TC023808	SCBDP4ZG5TC024398
SCBDN3ZG9TC024534	SCBDP4ZG4TC023811	SCBDP4ZG5TC024501
SCBDN3ZGXTTC024672	SCBDP4ZG4TC023825	SCBDP4ZG5TC024711
SCBDP4ZG0TC023935	SCBDP4ZG4TC023923	SCBDP4ZG5TC024806
SCBDP4ZG0TC023966	SCBDP4ZG4TC023940	SCBDP4ZG5TC024854
SCBDP4ZG0TC024101	SCBDP4ZG4TC024070	SCBDP4ZG6TC023700
SCBDP4ZG0TC024244	SCBDP4ZG4TC024098	SCBDP4ZG6TC023759
SCBDP4ZG0TC024325	SCBDP4ZG4TC024148	SCBDP4ZG6TC023843

SCBDP4ZG6TC024006	SCBDP4ZG9TC023917	SCBDR4ZG4TC023818
SCBDP4ZG6TC024037	SCBDP4ZG9TC024047	SCBDR4ZG4TC024323
SCBDP4ZG6TC024040	SCBDP4ZG9TC024050	SCBDR4ZG4TC024550
SCBDP4ZG6TC024068	SCBDP4ZG9TC024338	SCBDR4ZG5TC023746
SCBDP4ZG6TC024135	SCBDP4ZG9TC024355	SCBDR4ZG5TC023973
SCBDP4ZG6TC024152	SCBDP4ZG9TC024422	SCBDR4ZG6TC023996
SCBDP4ZG6TC024216	SCBDP4ZG9TC024615	SCBDR4ZG7TC023716
SCBDP4ZG6TC024233	SCBDP4ZG9TC023733	SCBDR4ZG7TC023876
SCBDP4ZG6TC024507	SCBDP4ZG9TC023795	SCBDR4ZG7TC024140
SCBDP4ZG6TC024572	SCBDP4ZG9TC023828	SCBDR4ZG7TC024400
SCBDP4ZG7TC023821	SCBDP4ZG9TC023845	SCBDR4ZG7TC024414
SCBDP4ZG7TC023902	SCBDP4ZG9TC023862	SCBDR4ZG8TC024065
SCBDP4ZG7TC023950	SCBDP4ZG9TC023893	SCBDR4ZG8TC024860
SCBDP4ZG7TC024127	SCBDP4ZG9TC023912	SCBDR4ZG9TC024091
SCBDP4ZG7TC024189	SCBDP4ZG9TC023926	SCBDR4ZG9TC024441
SCBDP4ZG7TC024449	SCBDP4ZG9TC024185	SCBDR4ZG9TC024522
SCBDP4ZG7TC024726	SCBDP4ZG9TC024560	SCBDR4ZG9TC024567
SCBDP4ZG8TC023729	SCBDP4ZG9TC024574	SCBDU33S1TC024530
SCBDP4ZG8TC023777	SCBDP4ZG9TC024719	SCBDU33S1TC024656
SCBDP4ZG8TC023942	SCBDP4ZG9TC024834	SCBDU33S2TC024360
SCBDP4ZG8TC023987	SCBDR33S0TC024715	SCBDU33S2TC024648
SCBDP4ZG8TC024024	SCBDR4ZG0TC023833	SCBDU33S2TC024732
SCBDP4ZG8TC024265	SCBDR4ZG0TC024237	SCBDU33S4TC024554
SCBDP4ZG8TC024511	SCBDR4ZG0TC024268	
SCBDP4ZG8TC024590	SCBDR4ZG1TC023694	
SCBDP4ZG8TC024749	SCBDR4ZG1TC023873	
SCBDP4ZG8TC024802	SCBDR4ZG1TC023890	
SCBDP4ZG8TC024850	SCBDR4ZG2TC023932	
SCBDP4ZG9TC023495	SCBDR4ZG2TC024045	
SCBDP4ZG9TC023707	SCBDR4ZG2TC024367	
SCBDP4ZG9TC023867	SCBDR4ZG4TC023771	