

Field campaign

Topic	Software Update BiL 5.3.1 v1 to v2 Flying Spur 25MY (SC25/11)
Market area	Bentley: worldwide (2WBE),China 796 VW Import Comp. Ltd (Vico), Beijing (6796)
Brand	Bentley
Transaction No.	2077583/7
Campaign number	ED42
Note	
Type	
US code	

Vehicle data

25MY Flying Spur

Sales types

Type	MY	Brand	Designation	Engine code	Gearbox code	Final drive code
Z32*	2025	E		*	*	*

Documents

Document name
master.xml
ed42vinlist.pdf

Notes

 [Repair instructions](#)

Technical background

Software updates must be applied to update the vehicles Baseline Integration Level (BiL).

The software update corrects the following Diagnostic trouble codes (DTCs):

- P060100: High Voltage Battery (Address 008C) Internal Control Module Memory Checksum Error
- P057F00: Battery "A" State of Charge Performance, B11B300 Igniter for high voltage battery interrupt
- P0A0B00: High Voltage System Interlock Circuit Performance (HVIL).



CAUTION

If the ED35 Campaign is showing as outstanding in ElsaPro, the ED35 campaign **MUST** be completed first.

- If ED35 is not completed first, this update will not succeed.

Remedy

The instructions within the 'Work' section **must** be conducted to completion.

Customer notification

Please ensure all applicable instructions are conducted at the nearest opportunity.

Warranty

SVM Update Time

Claim type: 790 or 710

Service number: ED42

Damage code: 0066

Criteria:01

Labour Operation Code: 01 51 00 00

Time: As per ODIS log (Must not exceed 200TU)

Additional Time Allowance

A 100TU allowance may be claimed only if a SVM update fails to complete successfully. This is intended to cover additional diagnostic or recovery work directly resulting from the failed update. It must not be used for unrelated delays or issues.

ODIS logs must be attached to a DISS ticket for evidence of failure. Claims without valid documentation will be rejected. Warranty Adjudicators will review associated ODIS logs and DISS queries to determine actual software update time.

Parts

Not Applicable

Parts supply

Not Applicable

Parts despatch control

Not Applicable

Repair instructions



Technical background

Software updates must be applied to update the vehicles Baseline Integration Level (BiL).

The software update corrects the following Diagnostic trouble codes (DTCs):

- P060100: High Voltage Battery (Address 008C) Internal Control Module Memory Checksum Error
- P057F00: Battery "A" State of Charge Performance, B11B300 Igniter for high voltage battery interrupt
- P0A0B00: High Voltage System Interlock Circuit Performance (HVIL).



CAUTION

If the ED35 Campaign is showing as outstanding in ElsaPro, the ED35 campaign **MUST** be completed first.
– If ED35 is not completed first, this update will not succeed.

Check

Check if the vehicle is already listed as repaired in "Repair history" (in ElsaPro).

Please also refer to the "Identification" section and check if a paint identification mark is evident in the vehicle.

If the vehicle is not shown in ElsaPro as repaired, and the identification mark is not present, please conduct the instructions within the 'Work' section to completion

Parts

Not Applicable

Work

 **CAUTION**

The Bentley ODIS-S Brand Version MUST be at least 2.35.1 (or higher)

 **CAUTION**

Before conducting the onward instructions, the operative **MUST** recheck the communication method in ODIS and ensure that DoIP is selected before proceeding. Within ODIS-S, perform the following:

- On the right hand side, select the “Admin” tile (Within ‘Operating modes’)
- Select “GFF sequence” (Within ‘General information’ section)
- Under the “Selection of Communication path” drop-down menu, select “Only permit DoIP communication”.

 **CAUTION**

DO NOT, UNDER ANY CIRCUMSTANCES, ATTEMPT TO CONDUCT THE SOFTWARE UPDATE VIA THE CAN NETWORK. ONLY DoIP SHOULD BE USED WHEN PERFORMING THE SVM UPDATE.

 **CAUTION**

You **MUST ONLY** use the Diagnosis Interface VAS 6154 (WiFi Diagnostic Tool) in USB OPERATION or the CABLE-CONNECTED VAS 5055 for the reprogramming (updating) of the control units.

- If neither of these units are available, the VAS 5054 (A) may be used in USB MODE.
- **DO NOT** under any circumstances use a Bluetooth connection to conduct the reprogramming (updating) of any control units.

Battery Charger

 **CAUTION**

ONLY Chargers that meet the approved specification on the Mandatory Equipment List (available on the Bentley Hub) **MUST** be used.

- The charger must be set to a mode where a **MINIMUM** of 90a is supplied to the battery during the process. Typically, this is known as ‘Power Supply Mode’ or ‘DIAG+ Mode’.
- A voltage of exactly 14.8v must be set and maintained throughout the process.
- Please refer to the manual to ensure that these requirements are met before beginning any SVM update

Preparation Before Update

 **WARNING**

Hybrid Vehicles use a High Voltage System and therefore **MUST ONLY** be worked on by suitable personnel

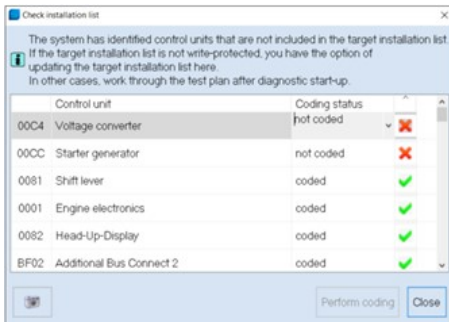


CAUTION

During the update, switch off all unnecessary consumers. For example, ventilation, seat heaters, interior illumination, exterior lights ect.

Conduct a full guided fault find of the vehicle.

If a 'Check Installation List' pop-up appears, select 'close' (see below image)



Referring to TPI 2075920, address any unknown faults **BEFORE** conducting any of the below updates.

Ensure that the correct battery charger is connected to the vehicle. – Refer to the "Battery Charger" Section above.

Obtaining Hotfix for ODIS-S

Visit <https://bentley.atheer.io/> and log in with the following case-sensitive account details.

- Username: bilupdate
- Password: Bentley123!



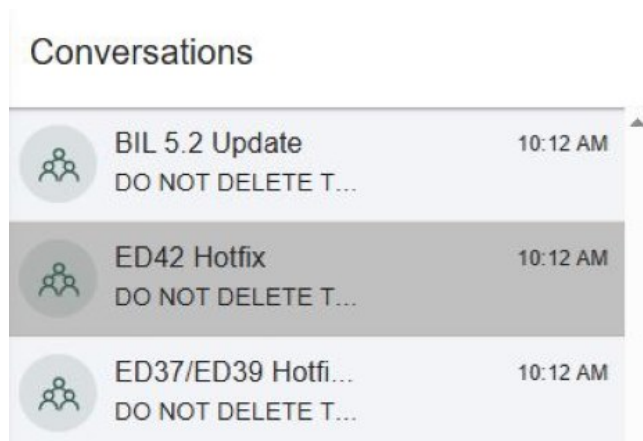
NOTICE

If you are already logged into your retailer account, you will need to logout first. To do this, click on your account initials (bottom left corner) and click "Sign Out".

After logging in, using the navigation bar on the left hand side, click on the 'conversations' tab



Next, click the conversation named “ED42 Hotfix”



NOTICE

You MUST NOT leave the conversation, remove users from the conversation, delete the conversation or alter the conversation in any way. The ONLY action you are permitted to perform is download the applicable file required for this campaign.

In this conversation, you will find a file named “ED42 _Hotfix” and “ED42_Local_Flash_Files”.

Left click each of the file names and download each folder.

After left-clicking the files to download them, the download will take circa 5-10 minutes, do not interrupt this process. You may need to wait a short period (internet speed dependent) for the files to download.

During/before the download commences, there may be a warning about a "pop-up" being blocked which will prevent the file from downloading, ensure to select option "Allow Pop-Ups from this website" to download the file. Wording may differ depending on web browser.

Locate the download file and extract it. To do this, right click the file, click “7 zip” and then “Extract here”

After successfully downloading the file, please logout of the account.

Loading ODIS-S Hotfix

With the hotfix you have downloaded from Atheer (ED42_Hotfix), load the hotfix “E_2.35.1_HF_BMC_BJB_204_207_V2_20250403-140521’ into ODIS-S.

The Bentley ODIS-S Brand Version MUST be at least 2.35.1 (or higher).

With the 'ED42_Local_Flash_Files', copy the content of the folder into your root c:/temp drive on your ODIS device.

- FL_4M0915249AN_0201_UPD0004T0005_V001_S.odx
- FL_4M0915249AM_0207_ABJB7A60590M1_V001_S.odx
- FL_4M0915231AH_0204_XHX15EV0421M6_V001_S.odx

First SVM Code Input



CAUTION

At this point, a suitable battery charger must be connected to the vehicle.

1. In ODIS-S, navigate to the "Special Functions" tab.
2. Navigate to 'SVM – Code Input', enter the SVM Code: "373ED4201".
3. On the next screen, ensure that the SVM code displayed is correct.
4. You will be shown the communication type. **This MUST be set to "DoIP"**.
 - a. If "DoIP" is not selected, select option 3 until the communication type is set to "DoIP".
5. After ensuring DoIP is selected, and a suitable battery charger is connected, select Option 1 – "Yes".
 - a. From here, all control modules will be interrogated and the SVM action will take place.
6. Ensure that the diagnostic device remains connected for the duration of the update.
7. Follow all on-screen prompts until the program ends.
 - a. If you have a prompt stating there is no communication established with 00CC, select done/continue.
8. Follow the on-screen instructions to completion. If you **do not** encounter any errors, please proceed to the "HIGH VOLTAGE SHUTDOWN" section.



NOTICE

If you receive an error code: 8088, you must follow the below instructions.

1. In ODIS-S, navigate to the "Special Functions" tab.
2. Navigate to 'SVM – Code Input' and enter the SVM code: "373A5CONFIG01"
3. On the next screen, ensure that the SVM code displayed is correct.

4. You will be shown the communication type. **This MUST be set to "DoIP"**.
 - a. If "DoIP" is not selected, select option 3 until the communication type is set to "DoIP".

5. After ensuring DoIP is selected, and a suitable battery charger is connected, select Option 1 – "Yes".
 - a. From here, all control modules will be interrogated and the SVM action will take place.

6. Ensure that the diagnostic device remains connected for the duration of the update.

7. Follow all on-screen prompts until the program ends.
 - a. If you have a prompt stating there is no communication established with 00CC, select done/continue.

8. You may or may not encounter an error after the update. Proceed regardless.

9. Refer back to the start of "First SVM Code Input" and repeat the process to input the SVM code "373ED4201".

10. Perform a whole vehicle DTC clear by exiting the current diagnostic session.

11. Perform a 15 minute CAN bus sleep.
 - a. Turn off the ignition.
 - b. Remove all equipment from the car (Diagnostic tester/dongle, battery charger, keys).
 - c. Close all doors, windows, bonnet and boot lid.
 - d. Lock the vehicle to perform a CAN-BUS sleep (wait 15 minutes).

12. Re-run guided fault finding and clear DTCs

High Voltage Shutdown

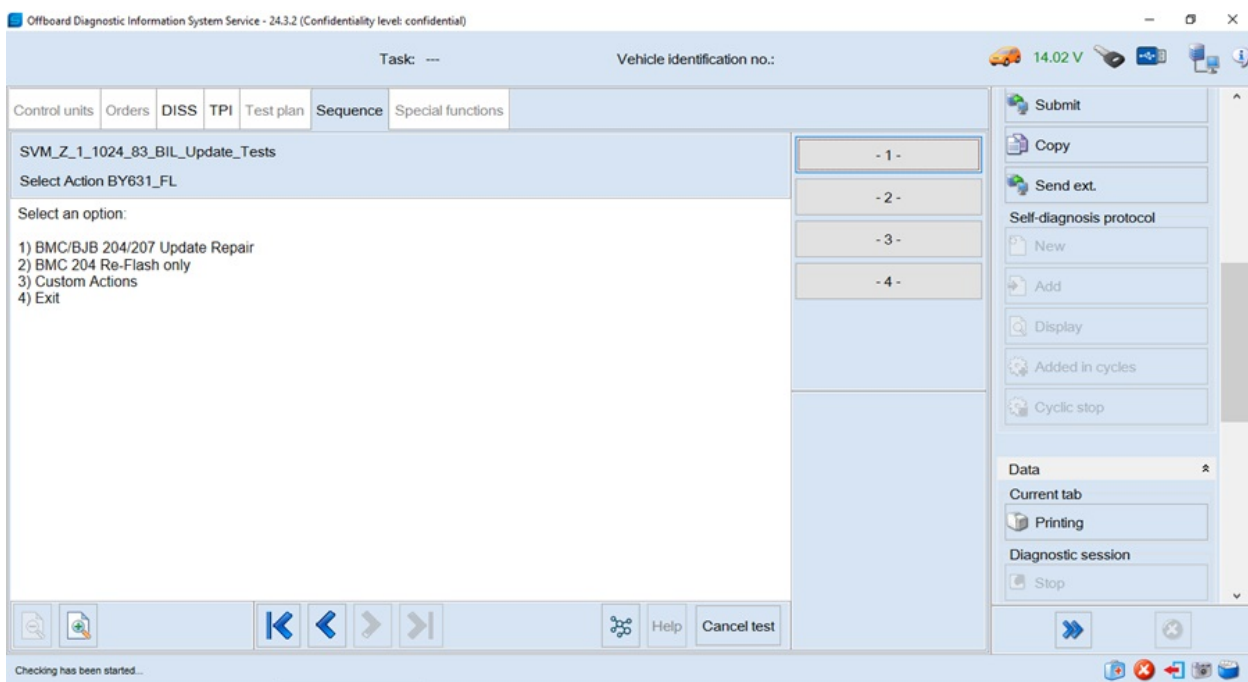


WARNING

De-energise the high-voltage system via ODIS-S. Refer to ElsaPro, Repair Group 93 – "De-energising high-voltage system" to do so.

1. After de-energisation, Refer to ElsaPro Repair Group 70 'Boot carpet – To remove and fit'. Remove the boot floor and gain access to the earth cable from the 12v battery negative and the body in white (This access will be required later in the test plan).

2. Navigate to 'Special functions' and select 'SVM – Pre 372BIL5201 Hotfix Routines', then 'Perform test'.
3. Switch to 'DoIP' when prompted.
4. Select '1) BMC/BJB 204/207 Update Repair' and follow the on-screen instructions.
 - When the tester attempts to flash '008C - Battery regulation control module' you may receive a message informing you that the pre-conditions have not been met. Select 'done/continue'.
 - On the following screen (shown below) select option 2 to attempt to flash the ECU – this should allow the '008C - Battery regulation control module' to flash successfully.



- If the flash fails, perform the below actions.

1. Exit the test.
2. Allow the car to sleep for 5 minutes.
 - a. Turn off the ignition.
 - b. Remove all equipment from the car (Diagnostic tester/dongle, battery charger, keys).
 - c. Close all doors, windows, bonnet and boot lid.
 - d. Lock the vehicle to perform a CAN-BUS sleep (wait 5 minutes).

3. Clear DTCs from '008C - Battery regulation control module'.
 - 3a. To do this, right click on control unit 008C, click Guided Functions and then click 'Clear Fault Memory'.
4. Return to 'Special functions' and run the test plan 'SVM – Pre 372BIL5201 Hotfix Routines'.
5. Within this test plan, select option 2 and run until completion.
6. Once the test has been completed, right click on control unit 008C and select guided functions. Then, read ECU Identification and ensure that the 06D0 (Battery Junction Box) appears as a subsystem within the read identification test plan.
7. Continue to the next SVM update.

Final SVM Code Input



WARNING

Re-energise the high-voltage system via ODIS-S. Refer to ElsaPro, Repair Group 93 – “Re-energising high-voltage system” to do so.

1. After re-energising the High Voltage System, navigate to the “Special Functions” tab in ODIS-S.
2. Navigate to 'SVM – Code Input' and enter the SVM Code: “373531COM02”.
3. On the next screen, ensure that the SVM code displayed is correct.
4. You will be shown the communication type. **This MUST be set to “DoIP”.**
 - a. If “DoIP” is not selected, select option 3 until the communication type is set to “DoIP”.
5. After ensuring DoIP is selected, and a suitable battery charger is connected, select Option 1 – “Yes”.
 - a. From here, all control modules will be interrogated and the SVM action will take place.
6. Ensure that the diagnostic device remains connected for the duration of the update.
7. Follow all on-screen prompts until the program ends.
 - a. If you have a prompt stating there is no communication established with 00CC, select done/continue.

8. Follow the on-screen instructions to completion.

9. If you are presented with this screen (Fig 3) at the end of the update, the update was successful. Please continue to step 11.

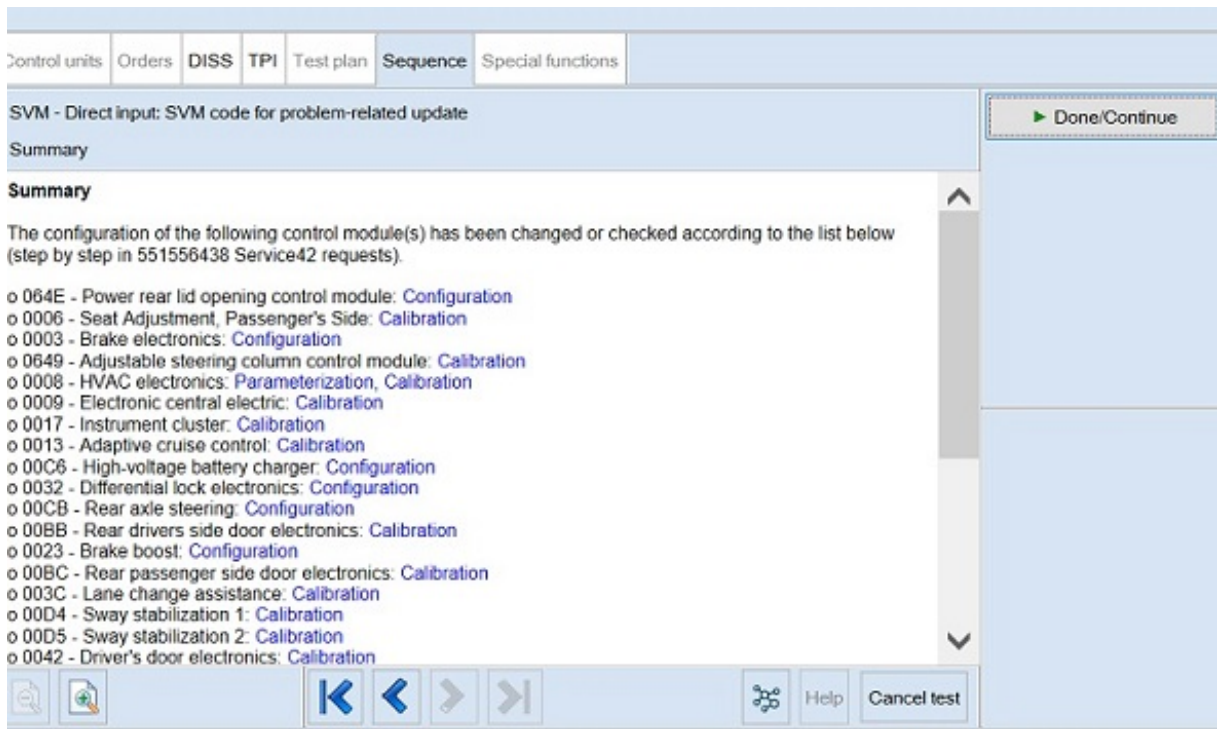


Fig 3

10. If you encounter any errors during the update, please refer to TPI 2078962 - 'ODIS Error Message – Best Practice When Performing Baseline (BiL) Updates'.

a. Please raise a FULL TECHNICAL DISS query.

b. Customer Statement: "ED42 Support"

c. Workshop Findings: Give a summary of the error encountered and ensure that the latest Guided Fault Finding log is submitted online.

11. After successful completion of the update, perform the following.

a. Turn off the ignition.

b. Remove all equipment from the car (Diagnostic tester/dongle, battery charger, keys).

c. Close all doors, windows, bonnet and boot lid.

d. Lock the vehicle to perform a CAN-BUS sleep (wait 15 minutes).

12. After 15 minutes, unlock and open the driver's door. Turn on the ignition, re-connect the battery charger and diagnostic dongle.

13. Re-run guided fault finding and clear DTCs. If any faults are present, refer to TPI 2075920. If any other faults are present, please raise a full DISS query with a fill GFF log uploaded online stating the error encountered.

Identification

Once the applicable action has been conducted, the operative must submit a warranty claim as this will show the service campaign action as complete within Elsa Pro "Repair history".

You must also add a blue paint mark as per the picture below.



[▲ Repair instructions](#) [▲ Notes](#)

INTERNAL

AMERICAS	ASIA PACIFIC	CHINESE MAINLAND HK AND MACAO
SCBBR6ZG0SC020013	SCBBF53S0SC021579	SCBBF53S1SC021557
SCBBR6ZG0SC020030	SCBBF53S0SC021811	SCBBF53S1SC021588
SCBBR6ZG0SC020111	SCBBF53S1SC021543	SCBBF53S1SC021669
SCBBR6ZG0SC020657	SCBBF53S1SC021977	SCBBF53S4SC021598
SCBBR6ZG0SC021209	SCBBF53S4SC021472	SCBBF53S6SC021571
SCBBR6ZG0SC021212	SCBBF53S6SC021926	SCBBF53S9SC021628
SCBBR6ZG0SC021498	SCBBF53S6SC022249	SCBBG53S0SC021269
SCBBR6ZG0SC021534	SCBBF53S7SC021949	SCBBG53S0SC021286
SCBBR6ZG0SC021596	SCBBF53S9SC021886	SCBBG53S0SC021305
SCBBR6ZG0SC021758	SCBBF53SXSC021959	SCBBG53S0SC021319
SCBBR6ZG0SC022084	SCBBJ53S3SC021896	SCBBG53S0SC021417
SCBBR6ZG0SC022232	SCBBJ53S7SC021349	SCBBG53S0SC021451
SCBBR6ZG0SC022313	SCBBJ53S7SC022338	SCBBG53S0SC021529
SCBBR6ZG0SC022327	SCBBJ53S9SC022230	SCBBG53S0SC021787
SCBBR6ZG1SC019940	SCBBR53S0SC021718	SCBBG53S0SC021918
SCBBR6ZG1SC019954	SCBBR53S0SC022268	SCBBG53S0SC021966
SCBBR6ZG1SC019985	SCBBR53S3SC021695	SCBBG53S0SC022065
SCBBR6ZG1SC019999	SCBBR53S4SC021592	SCBBG53S0SC022115
SCBBR6ZG1SC020036	SCBBR53S4SC021995	SCBBG53S0SC022180
SCBBR6ZG1SC020070	SCBBR53S6SC021321	SCBBG53S0SC022194
SCBBR6ZG1SC020098	SCBBR53S6SC021657	SCBBG53S0SC022244
SCBBR6ZG1SC020117	SCBBR53S6SC021738	SCBBG53S0SC022308
SCBBR6ZG1SC020179	SCBBR53S6SC021755	SCBBG53S1SC021281
SCBBR6ZG1SC020358	SCBBR53S6SC021853	SCBBG53S1SC021443
SCBBR6ZG1SC020781	SCBBR53S6SC022288	SCBBG53S1SC021491
SCBBR6ZG1SC021526	SCBBR53S7SC021361	SCBBG53S1SC021507
SCBBR6ZG1SC021882	SCBBR53S7SC021716	SCBBG53S1SC021541
SCBBR6ZG1SC022160	SCBBR53S8SC021613	SCBBG53S1SC021751
SCBBR6ZG1SC022238	SCBBR53S8SC021725	SCBBG53S1SC021815
SCBBR6ZG1SC022255	SCBBR53S8SC021871	SCBBG53S1SC021989
SCBBR6ZG1SC022319	SCBBR53S8SC022020	SCBBG53S1SC022043
SCBBR6ZG2SC019901	SCBBR53S9SC021667	SCBBG53S1SC022057
SCBBR6ZG2SC019915	SCBBR53S9SC021765	SCBBG53S1SC022091
SCBBR6ZG2SC020028	SCBBR53S9SC021880	SCBBG53S1SC022107
SCBBR6ZG2SC020160	SCBBR53SXSC021922	SCBBG53S1SC022141
SCBBR6ZG2SC020188	SCBBR53SXSC021953	SCBBG53S1SC022172
SCBBR6ZG2SC020191		SCBBG53S1SC022205
SCBBR6ZG2SC021180		SCBBG53S1SC022219
SCBBR6ZG2SC021423		SCBBG53S1SC022270
SCBBR6ZG2SC021437		SCBBG53S1SC022303
SCBBR6ZG2SC021907		SCBBG53S1SC022334
SCBBR6ZG2SC022152		SCBBG53S2SC021273
SCBBR6ZG2SC022183		SCBBG53S2SC021290

SCBBR6ZG2SC022331
SCBBR6ZG3SC019907
SCBBR6ZG3SC019924
SCBBR6ZG3SC020023
SCBBR6ZG3SC020054
SCBBR6ZG3SC020085
SCBBR6ZG3SC020135
SCBBR6ZG3SC020149
SCBBR6ZG3SC021169
SCBBR6ZG3SC021303
SCBBR6ZG3SC021317
SCBBR6ZG3SC021415
SCBBR6ZG3SC021429
SCBBR6ZG3SC021608
SCBBR6ZG3SC021639
SCBBR6ZG3SC021687
SCBBR6ZG3SC021768
SCBBR6ZG3SC021902
SCBBR6ZG3SC021947
SCBBR6ZG3SC022063
SCBBR6ZG3SC022127
SCBBR6ZG3SC022189
SCBBR6ZG3SC022192
SCBBR6ZG3SC022242
SCBBR6ZG3SC022306
SCBBR6ZG3SC022340
SCBBR6ZG3SC022354
SCBBR6ZG4SC019947
SCBBR6ZG4SC019950
SCBBR6ZG4SC019964
SCBBR6ZG4SC019978
SCBBR6ZG4SC020077
SCBBR6ZG4SC020659
SCBBR6ZG4SC021133
SCBBR6ZG4SC021150
SCBBR6ZG4SC021343
SCBBR6ZG4SC021374
SCBBR6ZG4SC021486
SCBBR6ZG4SC021519
SCBBR6ZG4SC021584
SCBBR6ZG4SC021603
SCBBR6ZG4SC021648
SCBBR6ZG4SC021732
SCBBR6ZG4SC021746

SCBBG53S2SC021323
SCBBG53S2SC021337
SCBBG53S2SC021385
SCBBG53S2SC021435
SCBBG53S2SC021449
SCBBG53S2SC021533
SCBBG53S2SC021581
SCBBG53S2SC021659
SCBBG53S2SC021726
SCBBG53S2SC021807
SCBBG53S2SC021824
SCBBG53S2SC022018
SCBBG53S2SC022049
SCBBG53S2SC022133
SCBBG53S2SC022228
SCBBG53S3SC021265
SCBBG53S3SC021301
SCBBG53S3SC021315
SCBBG53S3SC021329
SCBBG53S3SC021346
SCBBG53S3SC021380
SCBBG53S3SC021413
SCBBG53S3SC021427
SCBBG53S3SC021511
SCBBG53S3SC021606
SCBBG53S3SC021637
SCBBG53S3SC021721
SCBBG53S3SC021735
SCBBG53S3SC021833
SCBBG53S3SC021847
SCBBG53S3SC021878
SCBBG53S3SC021993
SCBBG53S3SC022013
SCBBG53S3SC022061
SCBBG53S3SC022111
SCBBG53S3SC022223
SCBBG53S3SC022240
SCBBG53S3SC022299
SCBBG53S4SC021257
SCBBG53S4SC021307
SCBBG53S4SC021341
SCBBG53S4SC021369
SCBBG53S4SC021372
SCBBG53S4SC021405

SCBBR6ZG4SC021939
SCBBR6ZG4SC022105
SCBBR6ZG4SC022170
SCBBR6ZG4SC022203
SCBBR6ZG4SC022282
SCBBR6ZG4SC022315
SCBBR6ZG5SC019911
SCBBR6ZG5SC019973
SCBBR6ZG5SC020010
SCBBR6ZG5SC020105
SCBBR6ZG5SC021237
SCBBR6ZG5SC021271
SCBBR6ZG5SC021447
SCBBR6ZG5SC021528
SCBBR6ZG5SC021898
SCBBR6ZG5SC021951
SCBBR6ZG5SC022226
SCBBR6ZG5SC022260
SCBBR6ZG5SC022274
SCBBR6ZG5SC022369
SCBBR6ZG6SC019903
SCBBR6ZG6SC019934
SCBBR6ZG6SC019982
SCBBR6ZG6SC019996
SCBBR6ZG6SC020002
SCBBR6ZG6SC020047
SCBBR6ZG6SC020064
SCBBR6ZG6SC020128
SCBBR6ZG6SC020713
SCBBR6ZG6SC021036
SCBBR6ZG6SC021196
SCBBR6ZG6SC021232
SCBBR6ZG6SC021263
SCBBR6ZG6SC021327
SCBBR6ZG6SC021523
SCBBR6ZG6SC021652
SCBBR6ZG6SC021795
SCBBR6ZG6SC022008
SCBBR6ZG6SC022123
SCBBR6ZG6SC022221
SCBBR6ZG6SC022266
SCBBR6ZG6SC022297
SCBBR6ZG7SC019909
SCBBR6ZG7SC019943

SCBBG53S4SC021453
SCBBG53S4SC021484
SCBBG53S4SC021503
SCBBG53S4SC021517
SCBBG53S4SC021694
SCBBG53S4SC021842
SCBBG53S4SC021985
SCBBG53S4SC022005
SCBBG53S4SC022036
SCBBG53S4SC022053
SCBBG53S4SC022215
SCBBG53S4SC022358
SCBBG53S5SC021333
SCBBG53S5SC021364
SCBBG53S5SC021378
SCBBG53S5SC021395
SCBBG53S5SC021459
SCBBG53S5SC021641
SCBBG53S5SC021655
SCBBG53S5SC021803
SCBBG53S5SC021851
SCBBG53S5SC021865
SCBBG53S5SC021929
SCBBG53S5SC022028
SCBBG53S5SC022076
SCBBG53S5SC022210
SCBBG53S5SC022286
SCBBG53S6SC021261
SCBBG53S6SC021311
SCBBG53S6SC021325
SCBBG53S6SC021499
SCBBG53S6SC021521
SCBBG53S6SC021566
SCBBG53S6SC021616
SCBBG53S6SC021650
SCBBG53S6SC021664
SCBBG53S6SC021678
SCBBG53S6SC021731
SCBBG53S6SC021745
SCBBG53S6SC021860
SCBBG53S6SC021924
SCBBG53S6SC022099
SCBBG53S6SC022121
SCBBG53S6SC022149

INTERNAL

SCBBR6ZG7SC019988
SCBBR6ZG7SC020008
SCBBR6ZG7SC020056
SCBBR6ZG7SC020140
SCBBR6ZG7SC020171
SCBBR6ZG7SC020753
SCBBR6ZG7SC021157
SCBBR6ZG7SC021191
SCBBR6ZG7SC021241
SCBBR6ZG7SC021403
SCBBR6ZG7SC021479
SCBBR6ZG7SC021563
SCBBR6ZG7SC021594
SCBBR6ZG7SC021630
SCBBR6ZG7SC021708
SCBBR6ZG7SC022213
SCBBR6ZG7SC022258
SCBBR6ZG7SC022292
SCBBR6ZG7SC022325
SCBBR6ZG8SC019921
SCBBR6ZG8SC019952
SCBBR6ZG8SC019966
SCBBR6ZG8SC020017
SCBBR6ZG8SC020020
SCBBR6ZG8SC020034
SCBBR6ZG8SC020079
SCBBR6ZG8SC020163
SCBBR6ZG8SC020177
SCBBR6ZG8SC020406
SCBBR6ZG8SC021202
SCBBR6ZG8SC021295
SCBBR6ZG8SC021779
SCBBR6ZG8SC021782
SCBBR6ZG8SC022026
SCBBR6ZG8SC022253
SCBBR6ZG8SC022317
SCBBR6ZG8SC022348
SCBBR6ZG9SC019927
SCBBR6ZG9SC019930
SCBBR6ZG9SC019944
SCBBR6ZG9SC019961
SCBBR6ZG9SC019989
SCBBR6ZG9SC019992
SCBBR6ZG9SC020091

SCBBG53S6SC022295
SCBBG53S6SC022362
SCBBG53S7SC021253
SCBBG53S7SC021351
SCBBG53S7SC021382
SCBBG53S7SC021401
SCBBG53S7SC021432
SCBBG53S7SC021561
SCBBG53S7SC021706
SCBBG53S7SC021799
SCBBG53S7SC021933
SCBBG53S7SC022001
SCBBG53S7SC022032
SCBBG53S7SC022290
SCBBG53S7SC022368
SCBBG53S8SC021293
SCBBG53S8SC021357
SCBBG53S8SC021391
SCBBG53S8SC021407
SCBBG53S8SC021441
SCBBG53S8SC021455
SCBBG53S8SC021469
SCBBG53S8SC021715
SCBBG53S8SC021777
SCBBG53S8SC021892
SCBBG53S8SC021911
SCBBG53S8SC021973
SCBBG53S8SC022024
SCBBG53S8SC022072
SCBBG53S8SC022086
SCBBG53S8SC022119
SCBBG53S8SC022136
SCBBG53S8SC022167
SCBBG53S8SC022198
SCBBG53S8SC022329
SCBBG53S8SC022346
SCBBG53S9SC021397
SCBBG53S9SC021464
SCBBG53S9SC021478
SCBBG53S9SC021481
SCBBG53S9SC021495
SCBBG53S9SC021514
SCBBG53S9SC021545
SCBBG53S9SC021576

INTERNAL

SCBBR6ZG9SC020320
SCBBR6ZG9SC020785
SCBBR6ZG9SC021130
SCBBR6ZG9SC021189
SCBBR6ZG9SC021399
SCBBR6ZG9SC021421
SCBBR6ZG9SC021466
SCBBR6ZG9SC021483
SCBBR6ZG9SC021600
SCBBR6ZG9SC021645
SCBBR6ZG9SC021676
SCBBR6ZG9SC021838
SCBBR6ZG9SC021855
SCBBR6ZG9SC021869
SCBBR6ZG9SC022147
SCBBR6ZG9SC022178
SCBBR6ZG9SC022262
SCBBR6ZG9SC022360
SCBBR6ZGXSC019905
SCBBR6ZGXSC019936
SCBBR6ZGXSC019970
SCBBR6ZGXSC020004
SCBBR6ZGXSC020617
SCBBR6ZGXSC021217
SCBBR6ZGXSC021234
SCBBR6ZGXSC021492
SCBBR6ZGXSC021590
SCBBR6ZGXSC021962
SCBBR6ZGXSC022352

SCBBG53S9SC021674
SCBBG53S9SC021741
SCBBG53S9SC021772
SCBBG53S9SC021979
SCBBG53S9SC022081
SCBBG53S9SC022095
SCBBG53S9SC022145
SCBBG53S9SC022162
SCBBG53S9SC022176
SCBBG53SXSC021389
SCBBG53SXSC021411
SCBBG53SXSC021425
SCBBG53SXSC021439
SCBBG53SXSC021456
SCBBG53SXSC021702
SCBBG53SXSC021828
SCBBG53SXSC021862
SCBBG53SXSC022039
SCBBG53SXSC022154
SCBBG53SXSC022185
SCBBG53SXSC022235
SCBBG53SXSC022350

INTERNAL

EUROPE	INTERNAL	MIDDLE EAST AFRICA & INDIA	UNITED KINGDOM
SCBBF53S0SC021632	SCBBF53S3SC021284	SCBBF53S8SC021409	SCBBF53S0SC021548
SCBBF53S0SC022196	SCBBF53S6SC021683	SCBBF5ZG1SC021299	SCBBF53S2SC021387
SCBBF53S1SC021297		SCBBF5ZG1SC021335	SCBBF53S2SC021762
SCBBF53S2SC022264		SCBBF5ZG1SC021366	SCBBF53S2SC021955
SCBBF53S3SC021611		SCBBF5ZG1SC021836	SCBBF53S2SC022278
SCBBF53S6SC021537		SCBBF5ZG1SC022310	SCBBF53S3SC021625
SCBBF53S7SC021997		SCBBF5ZG1SC022372	SCBBF53S3SC022158
SCBBF53S8SC021376		SCBBF5ZG2SC021277	SCBBF53S4SC022010
SCBBF53S8SC021474		SCBBF5ZG2SC021697	SCBBF53S5SC021559
SCBBF53S8SC021586		SCBBF5ZG3SC022342	SCBBF53S5SC021710
SCBBF53S8SC022284		SCBBF5ZG4SC021359	SCBBF53S5SC021819
SCBBF53S9SC021354		SCBBF5ZG4SC021555	SCBBF53S8SC021698
SCBBF53S9SC022276		SCBBF5ZG4SC021703	SCBBF53S9SC022200
SCBBF53SXSC021251		SCBBF5ZG4SC022365	SCBBF53SXSC021640
SCBBF53SXSC021525		SCBBF5ZG6SC021671	
SCBBF53SXSC022125		SCBBF5ZG7SC021288	
SCBBF53SXSC022139		SCBBF5ZG7SC021873	
SCBBJ53S4SC021602		SCBBF5ZG7SC022067	
SCBBJ53S8SC021506		SCBBF5ZG7SC022103	
SCBBJ53S9SC021515		SCBBF5ZG7SC022165	
		SCBBF5ZG8SC021574	
		SCBBF5ZG8SC021686	
		SCBBF5ZG9SC021275	
		SCBBF5ZG9SC021681	
		SCBBF5ZGXSC021690	
		SCBBF5ZGXSC022046	
		SCBBF5ZGXSC022144	
		SCBBH53S0SC022208	
		SCBBH53S3SC021568	
		SCBBJ53S1SC021749	
		SCBBJ53S9SC022129	