

Technical Service Bulletin

Mazda North American Operations
Irvine, CA 92618-2922

**Subject:**

**LIGHT RESISTANCE AND/OR UNUSUAL NOISE WHEN TURNING
STEERING WHEEL LEFT OR RIGHT**

Bulletin No.: 06-002/25

Last Issued : 11/13/2025

BULLETIN NOTES

This bulletin supersedes the previously issued bulletin(s) listed below. The changes are noted in Red text.

Previous TSBs:	Date(s) Issued:
06-002/23	05/03/23
06-001/21	01/20/21 and 09/16/21
06-001/20	02/05/20
06-005/19	7/22/19
06-002/18	09/14/18

APPLICABLE MODEL(S)/VINS**US Spec.:**

2016-2022 CX-3 (Japan built) vehicles with VINs lower than JM1 DK**** ** 606638 (Produced before Jul. 11, 2022)

Mexico Spec.:

2023-2025 CX-3 (Mexico built) vehicles with VINs lower than 3MJ DK **** ** 760130 (Produced before Jul. 28, 2025)

2016-2026 Mazda2 (Mexico built) (without Lane-keep assist) vehicles with VINs lower than 3MD DJ **** ** 550193 (Produced before Sep. 29, 2025)

NOTE: Mazda2 equipped with Lane-keep assist system is not applicable to this service bulletin due to a difference of part supplier.

DESCRIPTION

Some vehicles may exhibit a light resistance and/or an unusual noise when turning the steering wheel in either direction.

Page 1 of 6

CONSUMER NOTICE: The information and instructions in this bulletin are intended for use by skilled technicians. Mazda technicians utilize the proper tools/ equipment and take training to correctly and safely maintain Mazda vehicles. These instructions should not be performed by "do-it-yourselfers." Customers should not assume this bulletin applies to their vehicle or that their vehicle will develop the described concern. To determine if the information applies, customers should contact their nearest authorized Mazda dealership. Mazda North American Operations reserves the right to alter the specifications and contents of this bulletin without obligation or advance notice. All rights reserved. No part of this bulletin may be reproduced in any form or by any means, electronic or mechanical---including photocopying and recording and the use of any kind of information storage and retrieval system ---without permission in writing.



This concern may be caused by insufficient lubrication between the worm wheel gear and worm shaft. To eliminate this concern, the amount of grease between the worm wheel gear and worm shaft was increased and the housing end cover shape was modified.

Customers having this concern should have their vehicle repaired using the following repair procedure.

REPAIR PROCEDURE

Verify the customer concern. Add grease to the steering column according to following steps:

NOTE:

- In the previous TSB (06-002/23), the procedure specified two (2) grease injections. In this revision, the number of injections has been increased to (4) four.
- For vehicles in which the procedure was already completed under TSB 06-002/23, only (2) two injections should be used this time, not (4) four.

1. Place paper on floor mat of driver seat to prevent it from getting dirty.
2. Adjust the driver seat to the rear most position and adjust the steering wheel to the highest position.
3. Remove the housing cover (1) if equipped.

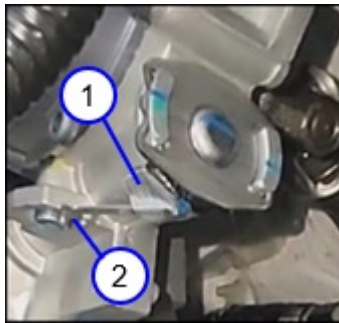


4. Remove the aluminum tape (1). Remove the anti-rattle spring (2) using a T25 wrench.

NOTE:

CONSUMER NOTICE: The information and instructions in this bulletin are intended for use by skilled technicians. Mazda technicians utilize the proper tools/ equipment and take training to correctly and safely maintain Mazda vehicles. These instructions should not be performed by "do-it-yourselfers." Customers should not assume this bulletin applies to their vehicle or that their vehicle will develop the described concern. To determine if the information applies, customers should contact their nearest authorized Mazda dealership. Mazda North American Operations reserves the right to alter the specifications and contents of this bulletin without obligation or advance notice. All rights reserved. No part of this bulletin may be reproduced in any form or by any means, electronic or mechanical---including photocopying and recording and the use of any kind of information storage and retrieval system ---without permission in writing.

- When the aluminum tape is removed, a hole will appear.
- The old sealant (butyl rubber) can be left as is.



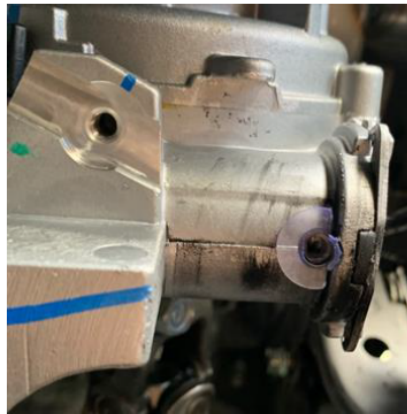
5. Prepare the grease tube, **guide cap and tube wringer**.

6. Start the engine.

7. Turn the steering wheel to the LEFT lock position.

8. Install the rubber cap in the hole. The circumferential direction is determined by the shape of the rubber cap.

NOTE: The rubber cap in the photo is clear, but it is actually black in color.



9. Cut 6 mm off the tip of the grease tube.



10. Set the grease tube into the rubber cap. Insert the grease tube into the rubber cap lightly until it bottoms out.

CONSUMER NOTICE: The information and instructions in this bulletin are intended for use by skilled technicians. Mazda technicians utilize the proper tools/ equipment and take training to correctly and safely maintain Mazda vehicles. These instructions should not be performed by "do-it-yourselfers." Customers should not assume this bulletin applies to their vehicle or that their vehicle will develop the described concern. To determine if the information applies, customers should contact their nearest authorized Mazda dealership. Mazda North American Operations reserves the right to alter the specifications and contents of this bulletin without obligation or advance notice. All rights reserved. No part of this bulletin may be reproduced in any form or by any means, electronic or mechanical---including photocopying and recording and the use of any kind of information storage and retrieval system ---without permission in writing.



11. Set the tube wringer on the end of the grease tube, then rotate the squeegee to inject all of the grease into the EPAS.
12. This completes (1) one grease tube.
13. Prepare another grease tube.
14. Turn the steering wheel 180 degrees to the **RIGHT**.

NOTE: This work must be performed before next grease application. This will create space for new grease to be applied to the gear section of the EPAS column.

15. Repeat step 9 through 14 three times.

16. Turning the steering wheel from lock to lock 5 times, check if the concern is resolved as the grease spreads on the entire worm gear.

17. Install the anti-rattle spring and the aluminum tape.

NOTE: Tightening torque of anti-rattle spring bolt using T25 wrench: {5.5-6.5 N-m, 56-66 kgf-cm, 48-57 in-lbf}

NOTE:

- Wipe off excess grease around the hole.
- **DO NOT** spray parts cleaner directly around the hole. Apply cleaner to a shop towel to wipe off the grease.

18. Install the housing cover **with a new one included in the kit**.
 - a. Attach the band part of the cover.
 - b. Press it from both sides to fit.
 - c. Shake the cover lightly to confirm proper fit.

CONSUMER NOTICE: The information and instructions in this bulletin are intended for use by skilled technicians. Mazda technicians utilize the proper tools/ equipment and take training to correctly and safely maintain Mazda vehicles. These instructions should not be performed by "do-it-yourselfers." Customers should not assume this bulletin applies to their vehicle or that their vehicle will develop the described concern. To determine if the information applies, customers should contact their nearest authorized Mazda dealership. Mazda North American Operations reserves the right to alter the specifications and contents of this bulletin without obligation or advance notice. All rights reserved. No part of this bulletin may be reproduced in any form or by any means, electronic or mechanical---including photocopying and recording and the use of any kind of information storage and retrieval system ---without permission in writing.



19. Return the driver seat and the steering wheel to the original position.
20. Verify the repair.

PARTS INFORMATION

NOTE: Mazda2 equipped with Lane-keep assist system is not applicable since the part supplier is different.

Parts Number	Description	Qty.	Notes
D0Y0-32-GR1B	Steering Grease	1	Includes parts listed below

	Description	Qty.	
(1)	Grease tube (10ml)	4	
	Aluminum tape	1	
	Anti-rattle spring	1	
	Anti-rattle spring bolt	1	
(2)	Rubber cap	1	
(3)	Tube wringer	1	
(4)	Cover end-housing	1	

WARRANTY INFORMATION

NOTE:

- This warranty information applies only to verified customer complaints on vehicles eligible for warranty repair.
- This repair will be covered under Mazda's New Vehicle Limited Warranty term.
- Additional diagnostic time cannot be claimed for this repair.

CONSUMER NOTICE: The information and instructions in this bulletin are intended for use by skilled technicians. Mazda technicians utilize the proper tools/ equipment and take training to correctly and safely maintain Mazda vehicles. These instructions should not be performed by "do-it-yourselfers." Customers should not assume this bulletin applies to their vehicle or that their vehicle will develop the described concern. To determine if the information applies, customers should contact their nearest authorized Mazda dealership. Mazda North American Operations reserves the right to alter the specifications and contents of this bulletin without obligation or advance notice. All rights reserved. No part of this bulletin may be reproduced in any form or by any means, electronic or mechanical---including photocopying and recording and the use of any kind of information storage and retrieval system ---without permission in writing.

Warranty Type	A
Symptom Code	31
Damage Code	99
Part Number Main Cause	D0Y0-32-GR1
Quantity	1
Operation Number / Labor Hours:	XXX3NXAX / 0.4 Hr.

CONSUMER NOTICE: The information and instructions in this bulletin are intended for use by skilled technicians. Mazda technicians utilize the proper tools/ equipment and take training to correctly and safely maintain Mazda vehicles. These instructions should not be performed by "do-it-yourselfers." Customers should not assume this bulletin applies to their vehicle or that their vehicle will develop the described concern. To determine if the information applies, customers should contact their nearest authorized Mazda dealership. Mazda North American Operations reserves the right to alter the specifications and contents of this bulletin without obligation or advance notice. All rights reserved. No part of this bulletin may be reproduced in any form or by any means, electronic or mechanical---including photocopying and recording and the use of any kind of information storage and retrieval system ---without permission in writing.