

**TECHNICAL SERVICE BULLETIN, VIN:
WSB-05 Open Trail Active Radar Cruise Control Sensor Correction**

November 6, 2025

Dear Tiffin Motorhome Owner,

It has come to our attention that on certain 2026 Open Trail Motorhomes, the radar sensor for the active radar cruise control is not correctly orientated. If the sensor's aim is not corrected, this may cause the motorhome to travel at a lower speed when trying to pass a vehicle.

Tiffin Motorhomes will replace the existing bracket for the sensor with a new bracket that will hold the sensor in the correct orientation.

Please take your motorhome to a service center of your choice to have the correction completed. This repair should take **30 minutes** or less and will be completed at no charge to you. Please note that the sensor will have to be recalibrated at a Mercedes Benz authorized service center.

NOTE: Some Mercedes Benz authorized service centers may be able to complete the sensor bracket correction and the recalibration of the sensor *if they choose to do so*.

A list of Tiffin Motorhomes authorized dealers is available online at <https://tiffinmotorhomes.com/service-center-locations>. If you are using a service center that is not a Tiffin Motorhomes authorized repair facility, please make sure that they contact Tiffin Motorhomes at 256-356-0261 or service@tiffinmotorhomes.com for the required instructions and time allowed for the repair. Tiffin Motorhomes will not pay over the allowed time unless the repair facility receives prior authorization. For authorization, contact Tiffin Motorhomes at 256-356-0261 or service@tiffinmotorhomes.com.

This technical service bulletin will expire January 1, 2027. Please make sure that the repair is completed prior to this date. Work completed after this date will be done at the customer's expense.

You may be liable for any progressive damage that results from your failure to complete this technical service bulletin within a reasonable time after receiving notification.

We regret any inconvenience this action may cause but feel certain you understand our interest in your continued use and enjoyment of your coach.

Tiffin Motorhomes

Technical Service Bulletin WSB-05 Repair Instructions

Purpose: Replace front active radar cruise control bracket to correct sensor orientation.

Models: 2026 Open Trail Motorhomes

FLAT RATE CODE & TIME ALLOWED To file the warranty claim for payment, please use the following flat rate code.

Involved and repaired - 8905SB00 for 0.50 hours, plus programming time.

Inspected and not involved - 890FSB00 for 0.10 hours.

No authorization is required for work completed at the flat rate times stated on the work instructions. Use "WSB-05" as the authorization on claim for payment.

NOTE: Mercedes-Benz PSM must be updated by an authorized Mercedes-Benz dealer or service provider.

Tools Needed:

SAE Allen Wrench or SAE Allen socket set
1/4" or 3/8" ratchet
7/16" SAE box end wrench
Torque Wrench

Parts Needed:

5180339 - Cover Radar Front Bumper

Inspection Instructions:

1. Verify the orientation of the current sensor and bracket hole pattern. The correct bracket orientation has two bolt holes on the top side and one bolt hole on the bottom side of the bracket, as seen in figure 1. The incorrect bracket orientation has two bolt holes on the driver's side and one bolt hole on the passenger's side (not shown).



Figure 1, correct bracket shown.

2. If the sensor orientation is correct, no further work needs to be done. File a claim using the inspection flat rate code above to clear the technical service bulletin from the motorhome.

Work instructions:

1. Remove the radar bracket from bumper housing by removing the three bolts that fasten the bracket and sensor to the bumper housing using 3/16" Allen wrench and a 7/16" box end wrench for the nuts. See figure 2. **NOTE:** Keep bolts for reinstalling new bracket.

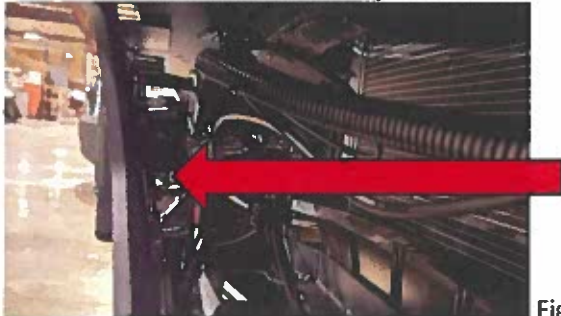


Figure 2

2. Remove the radar sensor from the radar bracket by locating and then removing the 3 bolts, using 3/16" Allen wrench and a 7/16" box end wrench for the nuts. **NOTE:** Keep bolts for reinstalling new bracket.
3. Install the radar sensor into the new bracket, lining the three-hole pattern up with the hole pattern on the new bracket. Use the bolts previously removed in step 2 to secure the sensor to the bracket and tighten all bolts to 25-in. lbs.
4. Install the radar bracket back to the bumper housing, making sure to orient the radar sensor as shown below in figure 3. Reinstall using the bolts removed in step 1 and tighten to 25 in. lbs.

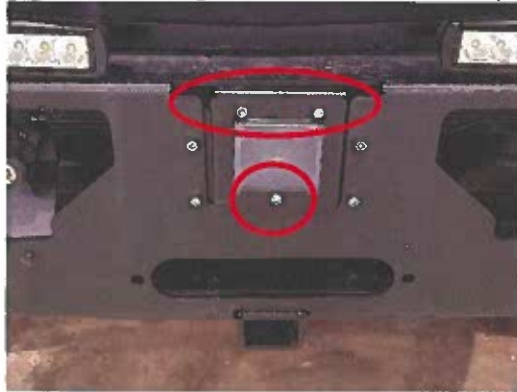


Figure 3

5. At a Mercedes Benz certified service center, properly program the chassis to ensure proper re-calibration of the active radar cruise control. **NOTE:** If needed, please see Xentry B92/! Commission, see Figure 4.

SCN code Active Brake Assist – B92 or Distronic – B92/1

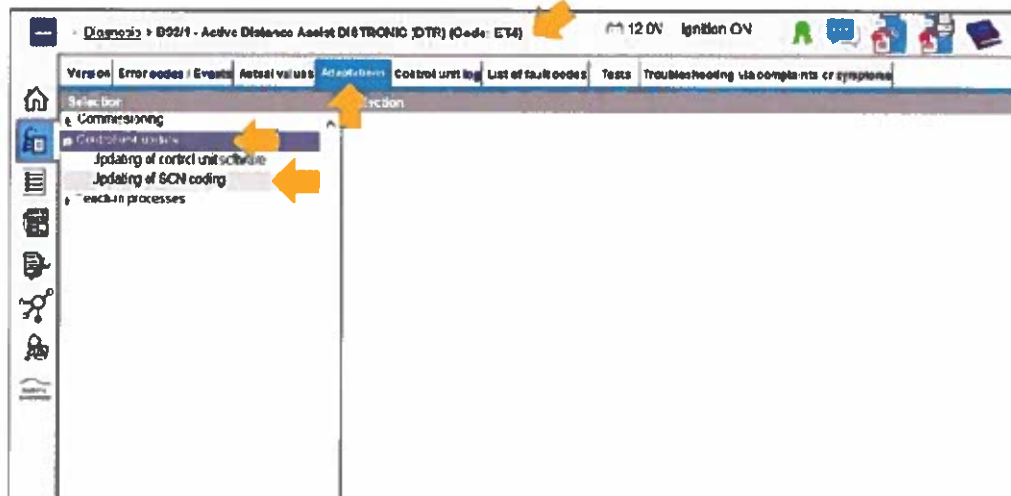


Figure 4

