

ATTENTION:

- GENERAL MANAGER
- PARTS MANAGER
- CLAIMS PERSONNEL
- SERVICE MANAGER

IMPORTANT - All Service Personnel Should Read and Initial in the boxes provided, right.

© 2024 Subaru of America, Inc. All rights reserved.



QUALITY DRIVEN® SERVICE

SERVICE BULLETIN

APPLICABILITY: 2025-26MY Forester Including Wilderness

NUMBER: 07-229-24R

SUBJECT: Genuine Battery Replacement

DATE: 06/19/24

REVISED: 11/13/25

INTRODUCTION:

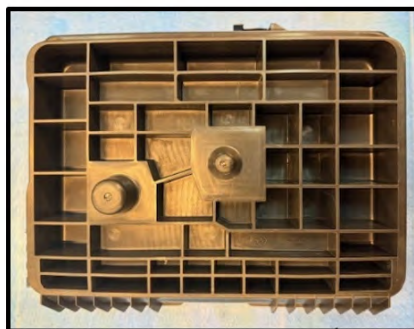
This bulletin announces the service procedure for battery replacement on 2025MY Forester in the event of battery replacement. **SOA821B700** is the replacement battery to be used in conjunction with a new battery tray when replacing an original battery. The tray has been supplied in all 2025MY Foresters and is located in the cargo area above the spare tire. Understanding past supply chain concerns, this replacement battery tray is being included to allow customers the flexibility to utilize either an imported or domestically sourced replacement battery as a replacement service part. Please refer to the service procedures outlined below when performing battery replacement.

PART INFORMATION:

The replacement battery tray is required when installing the **SOA821B700** replacement battery. This new tray fits the dimensions of the replacement battery. There are no other additional parts required. The tray is included with the vehicle and does not need to be purchased separately. If needed, the tray can be ordered using **p.n. 82122SL000**. Cases when a **SOA821B700** replacement battery is already fitted to the vehicle, the battery tray will also be installed.



Location



Bottom View



Top View

CAUTION: VEHICLE SERVICING PERFORMED BY UNTRAINED PERSONS COULD RESULT IN SERIOUS INJURY TO THOSE PERSONS OR TO OTHERS.

Subaru Service Bulletins are intended for use by professional technicians ONLY. They are written to inform those technicians of conditions that may occur in some vehicles, or to provide information that could assist in the proper servicing of the vehicle. Properly trained technicians have the equipment, tools, safety instructions, and know-how to do the job correctly and safely. If a condition is described, DO NOT assume that this Service Bulletin applies to your vehicle, or that your vehicle will have that condition.

Subaru of America, Inc. is ISO 14001 Compliant

ISO 14001 is the international standard for excellence in Environmental Management Systems. Please recycle or dispose of automotive products in a manner that is friendly to our environment and in accordance with all local, state and federal laws and regulations.

Continued...

SERVICE PROCEDURE / INFORMATION:

Please review the battery identification, charging, and testing information provided in Service Bulletin **07-178-21** prior to performing any battery testing and/or charging. **ALWAYS** confirm Midtronics equipment has the latest software available.

IMPORTANT: DO NOT discard the original battery tray. This part must be returned to the customer.

STEP 1: Refer to the applicable Service Manual and review: General Description > Repair Contents > Action required before & after Battery Disconnect. Additionally, record any stored seat position(s) before proceeding. Relearn any seat position memory after work is complete. If the power rear gate (PRG) height has been customized, that position must also be noted and relearned.

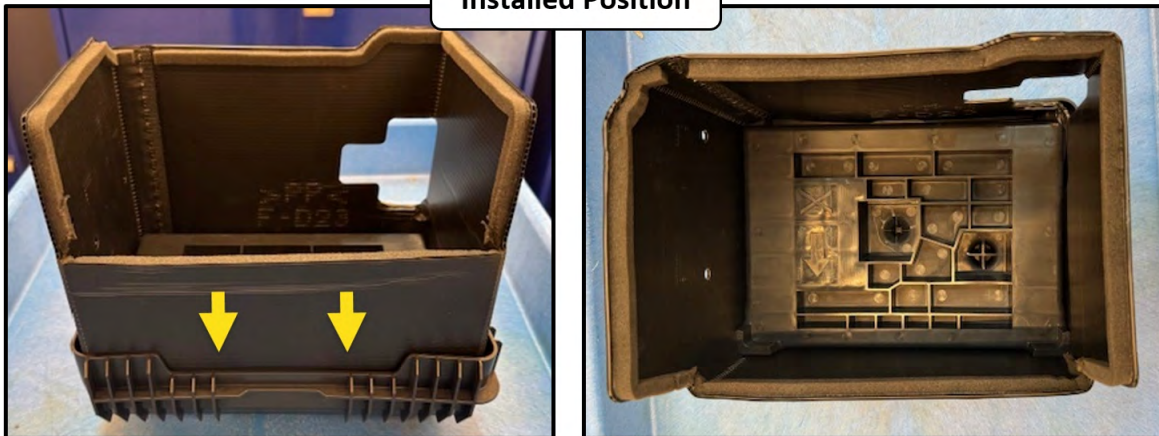
STEP 2: Remove the battery as per the applicable Service Manual: Engine > STARTING/CHARGING SYSTEMS > Battery > Removal

STEP 3: The battery tray is fitted with a surrounding groove allowing the battery cover sufficient clearance when installed. Install the battery cover on to the battery tray as shown.

Grooved Area

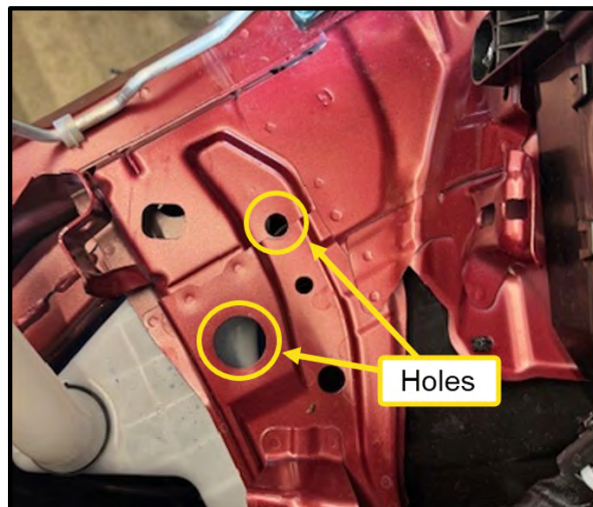
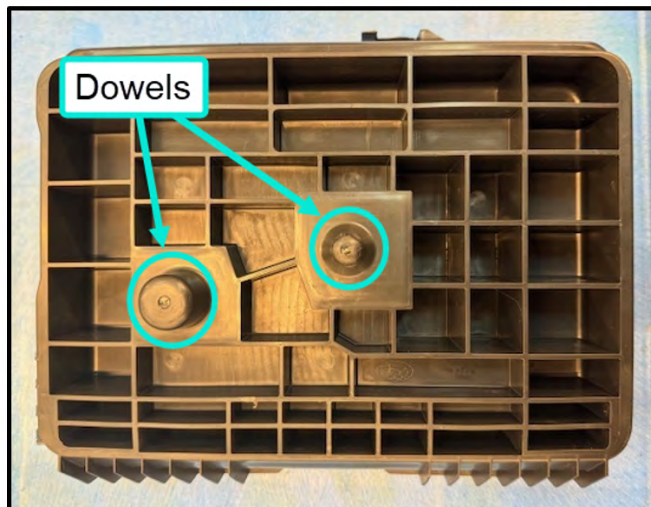


Installed Position

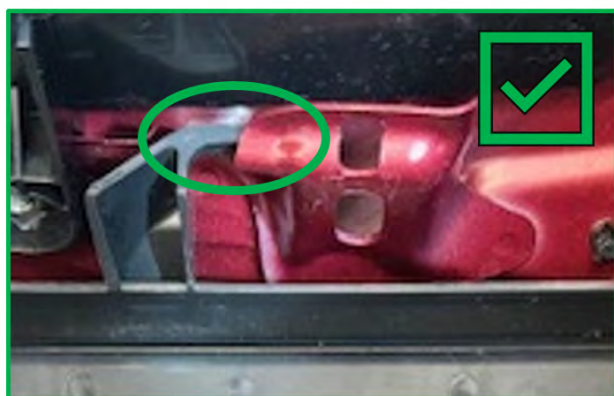


Continued...

STEP 4: Install the battery and tray cover aligning the lower tray dowels with the mounting holes located on the body as shown.

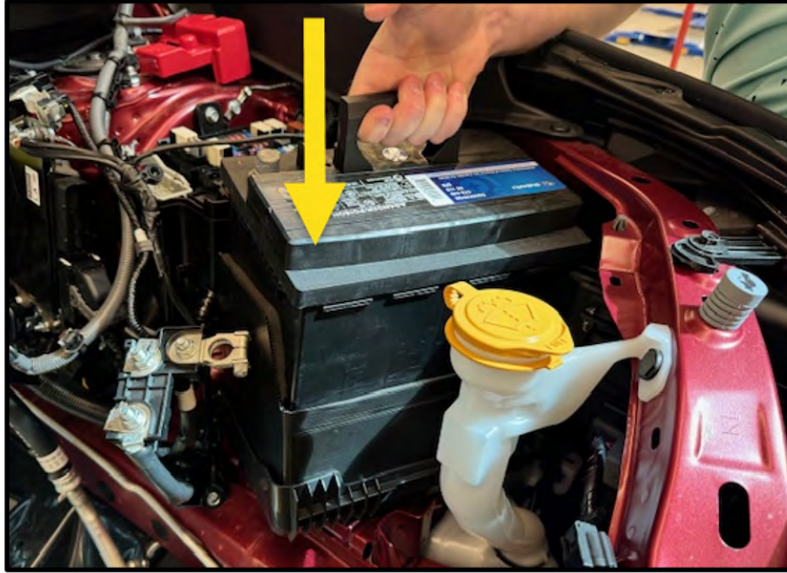


IMPORTANT: Align the rear tray hook behind the battery rod mount.



Continued...

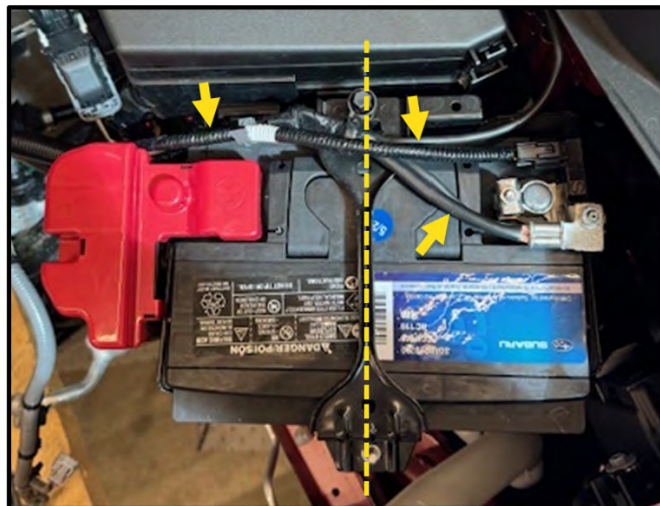
STEP 5: CAREFULLY lower the replacement battery into the battery cover and tray. Confirm the battery sits flush on the tray.



STEP 6: Install the original battery holder and holding rods on to the battery.

- A. Torque the two holding rod mounting nuts to **3.5 N·m (2.6ft.-lbs. or 31inch.-lbs.)**.
- B. Torque the positive terminal to **6 N·m (4.4ft.-lbs. or 53inch.-lbs.)**.
- C. Torque the negative terminal to **7.5Nm (5.5ft.-lbs. or 66inch.-lbs.)**.
- D. If the battery sensor is removed or disconnected torque to 7.5Nm (5.5ft.-lbs. or 66inchlbs.) while supporting the sensor with the other hand as outlined in the applicable Service Manual under: STARTING/CHARGING SYSTEMS > Battery Sensor.

NOTE: Confirm the battery holder is center mounted with the battery cables secured and routed correctly.



Continued...

STEP 7: Place the original battery tray into the cargo area where the replacement battery tray was stored.



WARRANTY / CLAIM INFORMATION:

For vehicles within the Basic New Car Limited Warranty period, this repair may be submitted using the following claim information:

Labor Description	Labor Operation #	Labor Time	Fail Code
START-STOP BATTERY TEST & REPLACE*	A800-002	0.5	FFF-42
CVT TORQ CONV RELEARN AFTER BATTERY DISCONNECT	C303-708	0.1	

*Battery Test Code entry is required for claim submission. Leaking battery concerns require pre-authorization.

IMPORTANT REMINDERS:

- SOA strongly discourages the printing and/or local storage of service information as previously released information and electronic publications may be updated at any time.
- Always check for any open recalls or campaigns anytime a vehicle is in for servicing.
- Always refer to STIS for the latest service information before performing any repairs.