



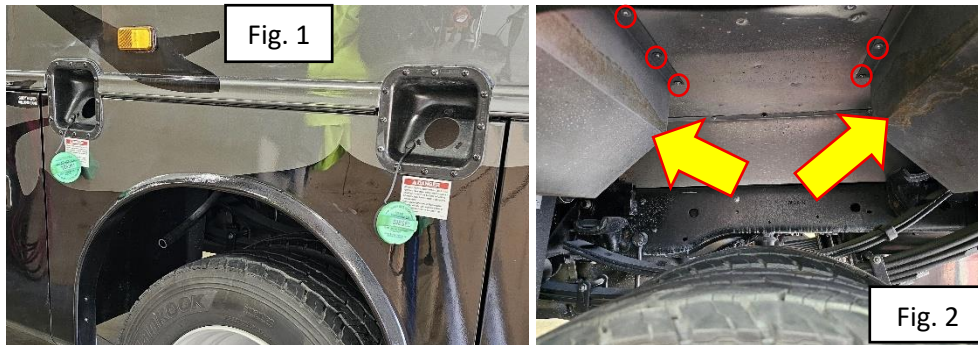
Generator Fuel Return Line

Bulletin Type:	SRP	Publication Date:	November 2025
Bulletin #(s):	25-023	Make(s):	Jayco & Entegra Coach
Job Code(s):	<i>**If affected unit has a warranty remaining, submit your claim following the normal process.</i>	Model(s):	Seneca XT, Accolade XT
Flat Rate(s):		Model Year(s):	2023 - 2026

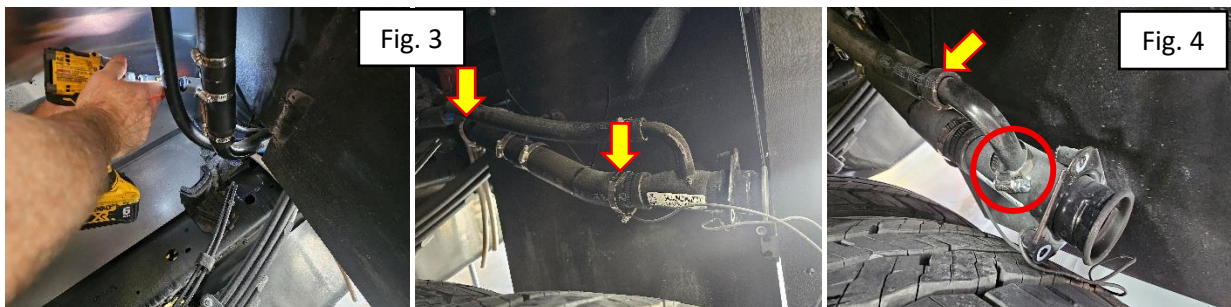
Incident:	Generator Fuel Return Line Routed to Rear Fuel Tank Instead of Front Fuel Tank
Affected Units:	2023- 2026 Jayco Seneca XT & 2023 – 2026 Entegra Coach Accolade XT
Parts List:	6 FT - HOSE,FUEL FILL 1.50ID F/GAS CHAS (Jayco Part #0230310) 16 FT - TUBE,.25 CARB LVL FUEL LN SAE30R14 250 FT (Jayco Part #2023172) 8 Qty- CLAMP,HOSE WMGR 1.31 TO 2.25 .63 BAND #28 SAE (Jayco Part #0170660)
Misc. Tools & Supplies:	Screw Gun with Square Head bit 90° Bit 5/16" & 3/8" Hex Head Driver Bit 7MM Socket Cutter/Utility Knife
Parts Return Information:	N/A

GENERATOR FUEL FILL REPAIR INSTRUCTIONS

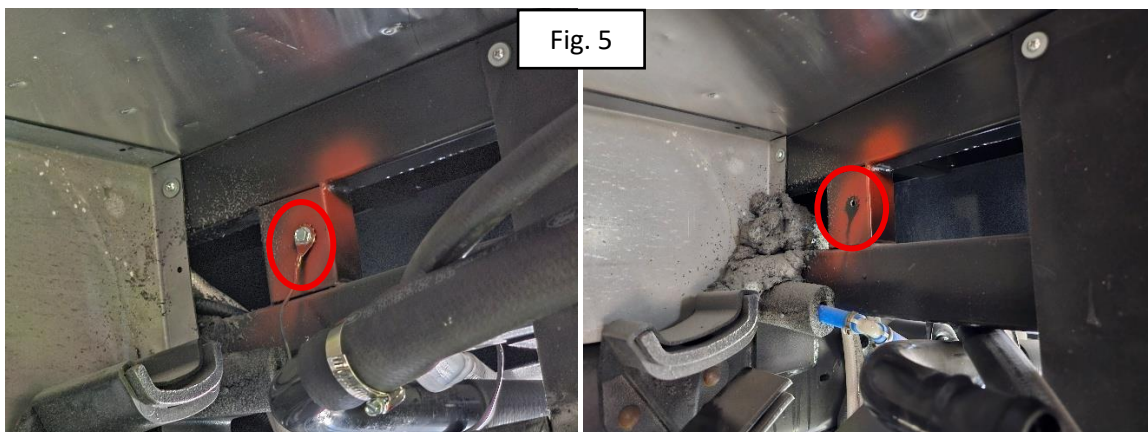
1. Use the leveling legs to lift and stabilize the coach.
2. Locate the wheel well, on the driver's side of the coach, between the fuel fill locations. (Figure 1)
3. Remove the heat shield on each side of the inner portion of the wheel well.
 - a. **Note: There should be 5 fasteners in the bottom of the heat shield and 5 in the top securing it to the coach.** (Figure 2)



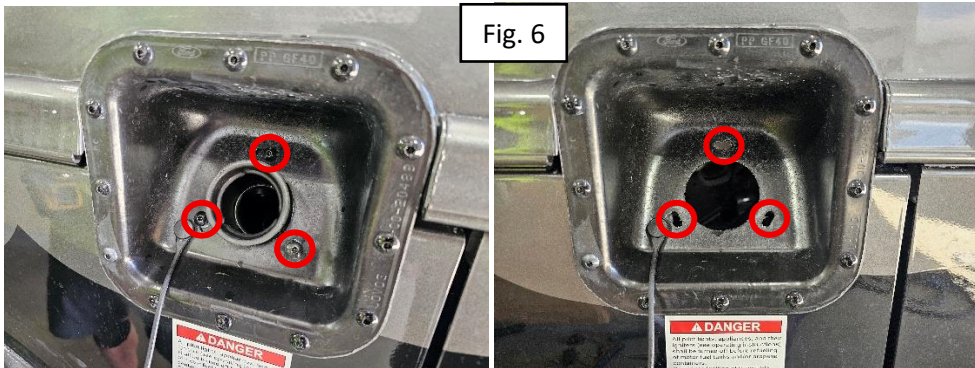
4. Starting with the rear fill assembly, use a 5/16" drive head bit to loosen the clamps securing the main fill hose to the fill neck. (Figure 3)
5. Using a 7MM socket, loosen the clamp securing the non-pressurized hose to the top of the fill. (Figure 4)



6. Use a 3/8" hex head driver bit to remove the ground wire from the chassis frame. (Figure 5)



7. Using a Screw Gun and square head bit, remove the 3 screws in the fuel fill compartment holding the assembly to the fuel fill. (Figure 6)
 - a. **Note: You will want to keep the fuel fill attached to the fill compartment while loosening the clamps. This will help keep the assembly rigid and make loosening the clamps easier.**



8. The rear assembly can now be removed from the coach.
9. Repeat steps 4 through 8 for the front fuel fill assembly.
10. Use the original fuel fill assemblies, that were removed from the coach, to create the new assemblies.
 - a. **Note: Make sure the new clamps have the fastener facing you and at the bottom of the assembly. This will give you the best access to the clamps to fully tighten them.** (Figure 7)



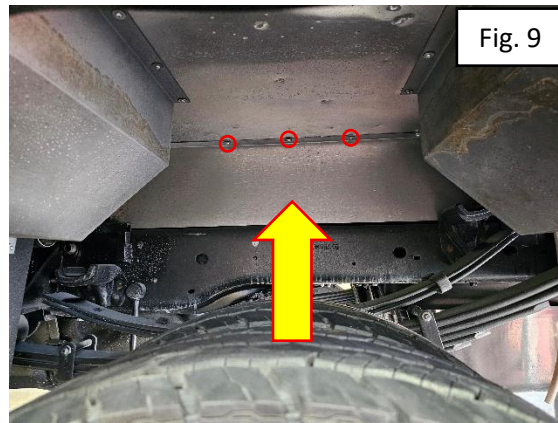
- A. Cut the zip tie securing the ground wire to the fuel assembly. (Figure 8A)



- B. Loosen clamps and remove the fill neck. Attach it to the new fill assembly. (Figure 8B)

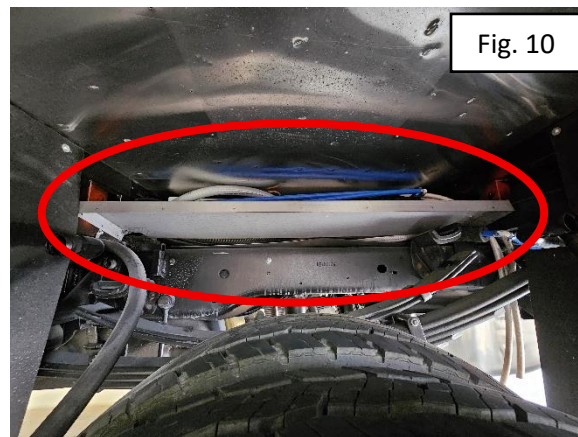


11. Remove the fasteners securing the rear heat shield to the chassis. (Figure 9)



12. Pull the heat shield down and towards you, but do not remove it from the coach. (Figure 10)

- a. **Note: This will make reinstallation of the heat shield simpler and will help avoid getting cut on the sharp edges.**



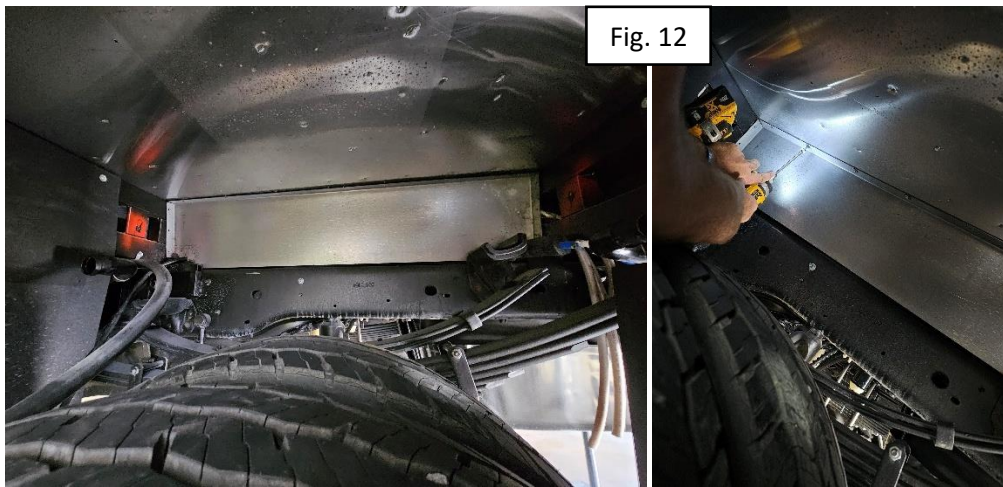
13. Work the original return hose through the chassis rails and out towards the generator at the rear of the coach.

14. Using Approx. 15' of return hose, bring the hose in from the rear of the coach. Follow the figures below (11.1, 11.2, & 11.3) to ensure the hose is routed behind the heat shield properly and exits via the notch in the bottom corner.

- a. **Please note: Failure to run the hose properly or in the correct location could result in additional damage being caused to the coach.**

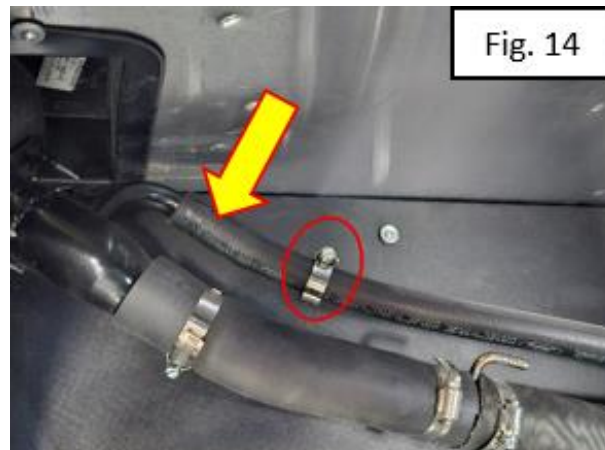
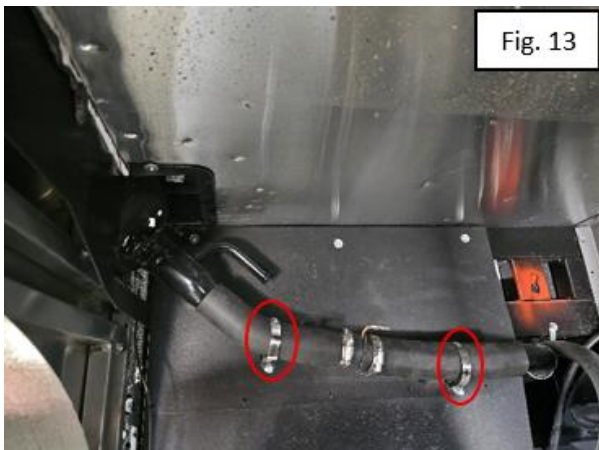


15. Re-secure the rear heat shield to the chassis using the same fasteners that were removed from the heat shield. (Figure 12)



16. Start by re-installing the front fuel fill assembly. Attach the main feed line to the adapter and secure with a clamp using a 5/16" hex head driver bit. (Figure 13)

17. Reconnect the top fill line using a clamp with a 5/16" Hex Head driver bit. (Figure 14)



18. Reinstall the 3 screws securing the fuel fill neck to the fuel fill box.
19. Using a screw gun and 3/8" hex head driver bit, reinstall the ground wire to the chassis.
20. Connect the return line to the barbed return elbow and secure it to the barbed elbow using a clamp with 7MM socket. (Figure 15)

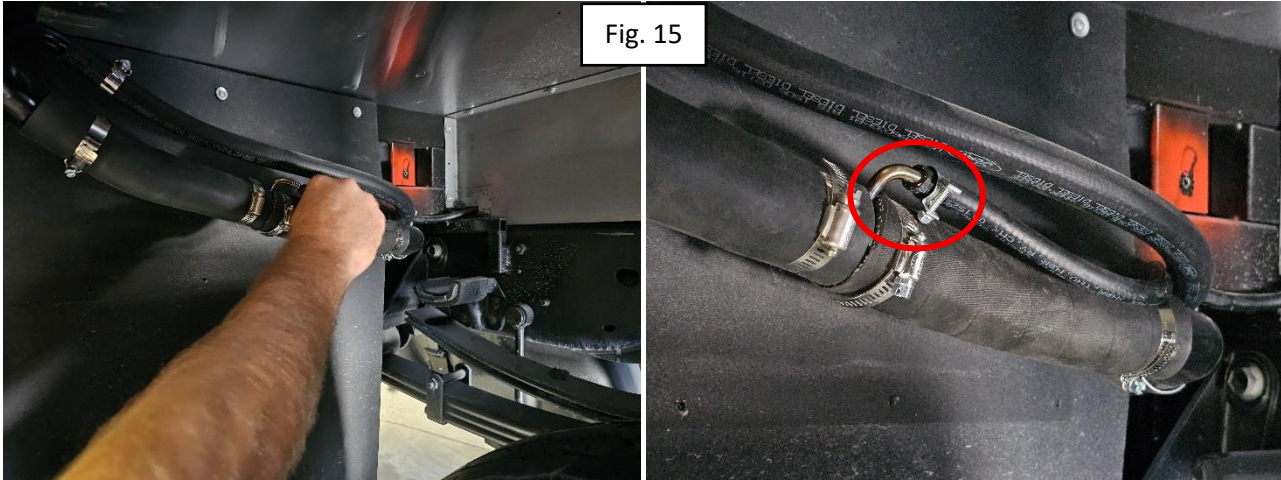


Fig. 15

21. Repeat steps 16 through 19 for the rear fuel fill assembly.
22. Connect the new return line to the generator using a 7MM socket. (Figure 16)

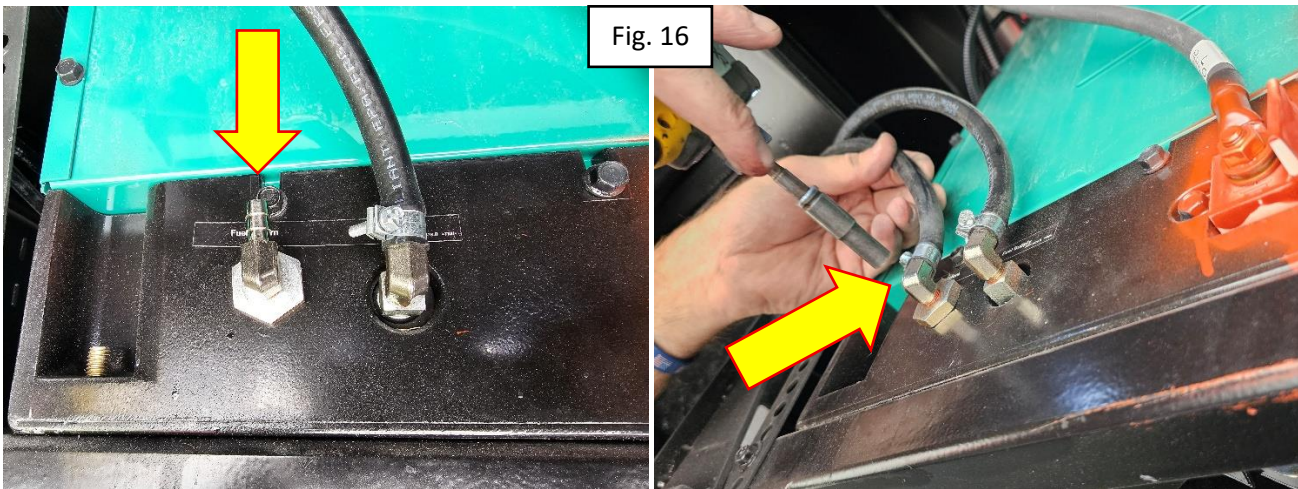


Fig. 16

Jayco's sole obligation under our limited warranty is to repair or replace defective materials and/or workmanship deemed our responsibility as determined by Jayco in our sole discretion. Jayco reserves the right to use new and/or remanufactured parts or materials of similar quality to complete any work, and to make parts and/or design changes as appropriate without notice to anyone. Jayco designs and/or materials changes are done without obligation to incorporate such changes in previously manufactured product. Jayco makes every reasonable effort to ensure field remedies will not adversely affect performance and/or safety of the unit. This field remedy is not intended to extend to future performance of this RV, or any of its materials, components or parts beyond the standard warranty period. The RV owner's obligation to notify Jayco, or one of its independent, authorized dealers, of a claimed defect does not modify any obligation placed on the RV owner to contact Jayco directly when attempting to pursue remedies under state or federal law.

903 South Main Street • P.O. Box 460 • Middlebury, IN 46540