



Technical Service Bulletin

GROUP	NUMBER
CAMPAIGN	25-01-084G
DATE	MODEL(S)
NOVEMBER 2025	GV60 (JW1 EV)

SUBJECT: REAR TRANSVERSE TRIM INSPECTION & REPLACEMENT
(LIMITED COVERAGE CAMPAIGN L06G)

* IMPORTANT

Retailers must perform this field action on all affected vehicles within 5 / 60,000 New Vehicle Limited Warranty (NVLW) prior to customer retail delivery and whenever an affected vehicle is in the shop for any maintenance or repair. See Warranty Information section for more details. Access the “Vehicle Information” screen via WebDCS to verify “Warranty Start Date” and ensure the vehicle is within NVLW, observing mileage prior to any repair work.

Description: Certain GV60 (JW1 EV) vehicles may have damaged stopper ribs on the transverse trim which may cause the spring-loaded striker cover to be stuck in a downward position. This bulletin provides instructions to inspect, and if necessary, replace the rear transverse trim.



Applicable Vehicles (Certain):

Model Year	Model	Production Dates
2025 – 2026	GV60 (JW1 EV)	04/24/2025 – 07/17/2025

NOTICE

To avoid any potential damage to Genesis EVs, this service campaign can only be performed by EV certified Genesis retailers.

Circulate To: General Manager, Service Manager, Parts Manager, Warranty Manager, Service Advisors, Technicians, Body Shop Manager, Fleet Repair

Parts Information:

Model	Part Name	Part Number	Color	Figure	Remarks
GV60 (JW1 EV)	TRIM ASSY-RR TRANSVERSE	85770- CU500GYAQH	Ash Gray		Qty: 1 Verify the correct part number for the VIN in the electronic parts catalog and add 'QH' for the part to order. Example: If part number for VIN is 85770-CU500NNB in the parts catalog, order part number 85770-CU500NNBQH.
		85770- CU500NNBQH	Obsidian Black		
		85770- CU500GLWQH	Glacier White		
	FASTENER-DR TRIM	82315-2W000	N/A		Replace if damaged

NOTE 1: Retailers will be reimbursed via sublet as noted below for any clips, regardless of replacement or **NOT**.

Warranty Information:

Model	Op. Code	Operation	Op. Time	Causal Part	Nature Code	Cause Code
GV60 (JW1 EV)	50D225R0	Rear Transverse Trim Inspection	0.3 M/H	85770-CU500NNB	B31	ZZ7
	50D225R1	Rear Transverse Trim Inspection & Replacement (P/N 85770-CU500NNBQH)		85770-CU500NNB		
	50D225R2	Rear Transverse Trim Inspection & Replacement (P/N 85770-CU500GYAQQH)		85770-CU500GYA		
	50D225R4	Rear Transverse Trim Inspection & Replacement (P/N 85770-CU500GLWQQH)		85770-CU500GLW		

NOTE 1: Submit claim on Claim Entry Screen as “Campaign” type.

NOTE 2: 5 / 60,000 New Vehicle Limited Warranty (NVLW) applies to the part(s) and repair procedure(s) outlined in this TSB. Prior to beginning any repair work, ensure the part(s) associated with the repair procedure are within NVLW, observing mileage and Warranty Start Date or date of first use. If the subject part(s) are out of warranty coverage, the retailer has the option to submit a PA Request for goodwill consideration on a case-by-case basis.

NOTE 3: If any part(s) not subject to this TSB are found in need of replacement while performing the repair procedure, and the affected part(s) are still under warranty, the dealer may submit a separate claim using the same repair order. If the part(s) not subject to this TSB are out of warranty coverage, the retailer has the option to submit a PA Request for goodwill consideration on a case-by-case basis.

NOTE 4: This TSB includes repair validation photos. Op times include VIN, Mileage, and Repair validation photo(s) as outlined in the Digital Documentation Policy.

NOTE 5: The incident parts are subject to callback through the normal Warranty Technical Center (WTC) parts return process. Claim is subject to debit if the part is not returned.

NOTE 6: Retailers will be reimbursed \$4.00 in sublet for any clips that need to be replaced.

Service Procedure:

DIGITAL DOCUMENTATION



This TSB includes repair validation photos. Refer to the latest Warranty Digital Documentation Policy for requirements.

Inspection Procedure

1. Open the tailgate.

CAUTION

Wear gloves to avoid hand injuries.

NOTICE

Do **NOT** bend or scratch the trim or panels.



2. Pull up the luggage board (A).



3. Use a plastic trim tool to pry under the rear transverse trim (B) to disengage 6 clips.

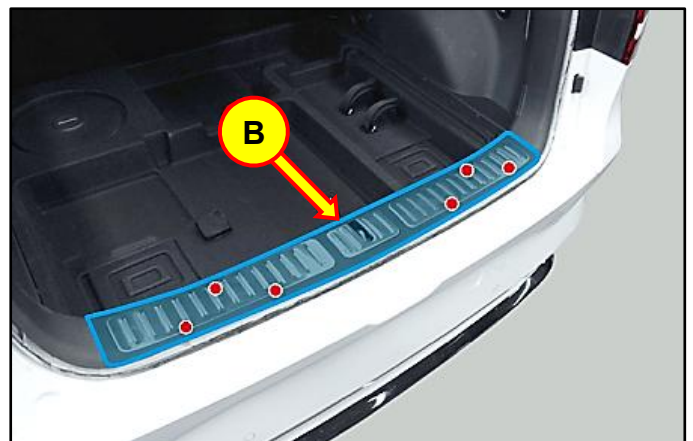
Remove the rear transverse trim.

NOTICE

Use a plastic trim tool to prevent damage.

i Information

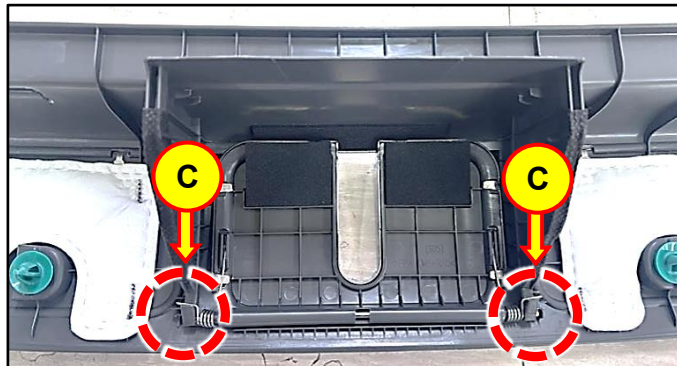
Replace any damaged or broken clips (PN: **82315-2W000**).



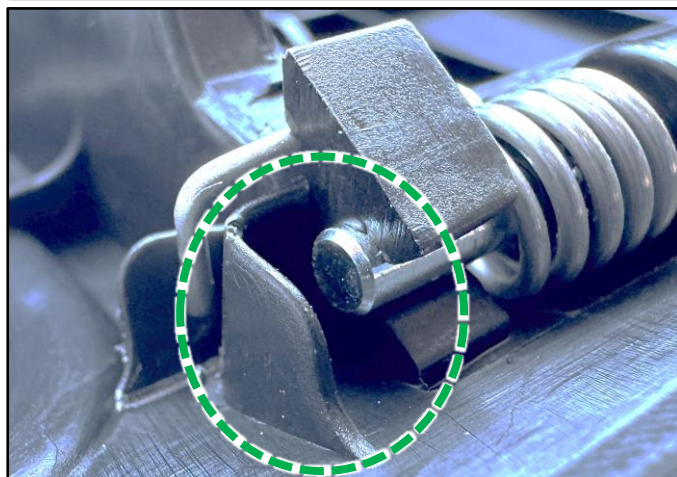
4. Visually inspect the stopper ribs (C) for damage:
- **NOT DAMAGED:** If **BOTH** stopper ribs are **NOT** damaged, complete **step 5** then proceed to **step 7**.
 - **DAMAGED:** If one or both stopper ribs are damaged, proceed to **step 5**.

i Information

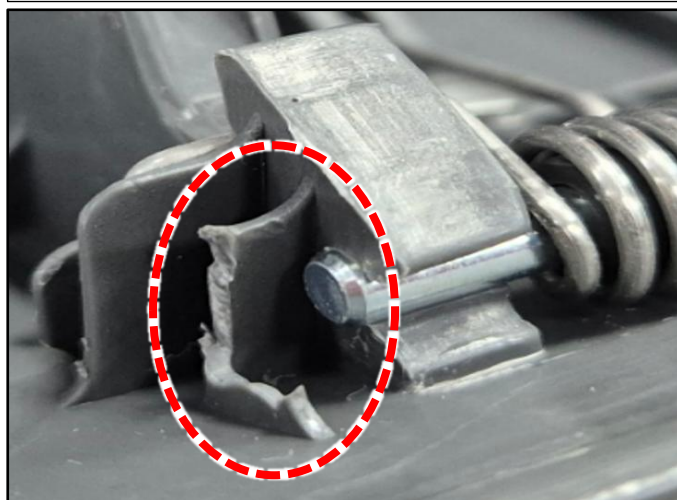
Refer to the parts table to order the correct replacement part.



NOT DAMAGED



DAMAGED



5.

**DIGITAL
DOCUMENTATION**



Using the STUI camera function, take a photo of the undamaged stopper ribs or the stopper ribs of the new rear transverse trim before installing.

Upload the photo to STUI.

NOTE: If the STUI camera function is **NOT** used, write the last 6 digits of the VIN and date of repair on a piece of paper to include in the photo.



6. Install the new rear transverse trim.

i Information

This step is **ONLY** applicable to **damaged** stopper rib(s). **Undamaged** stopper rib(s) should proceed to **step 7**.

7. Reassemble all parts in reverse order of removal.

NOTICE

Ensure the trim is properly secured.

8. Close the tailgate.

9. The service procedure is now complete.