



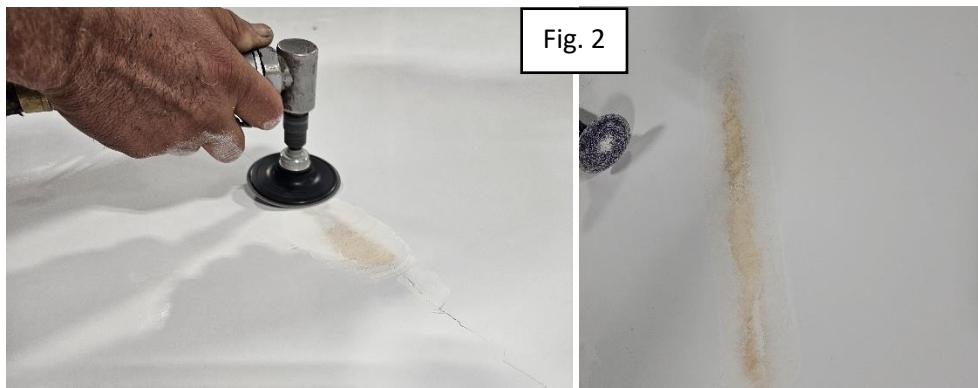
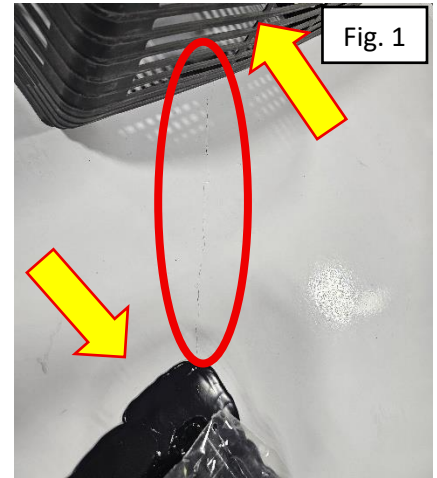
Filon Roof Crack Repair

Bulletin Type:	SRP	Publication Date:	November 2025
Bulletin #(s):	25-017	Make(s):	Jayco & Entegra Coach
Job Code(s):	<i>If affected unit has warranty remaining, submit your claim following the normal process</i>	Model(s):	Cornerstone, Anthem, Aspire, Reatta XL, Reatta, Embark
Flat Rate(s):		Model Year(s):	2012-2026

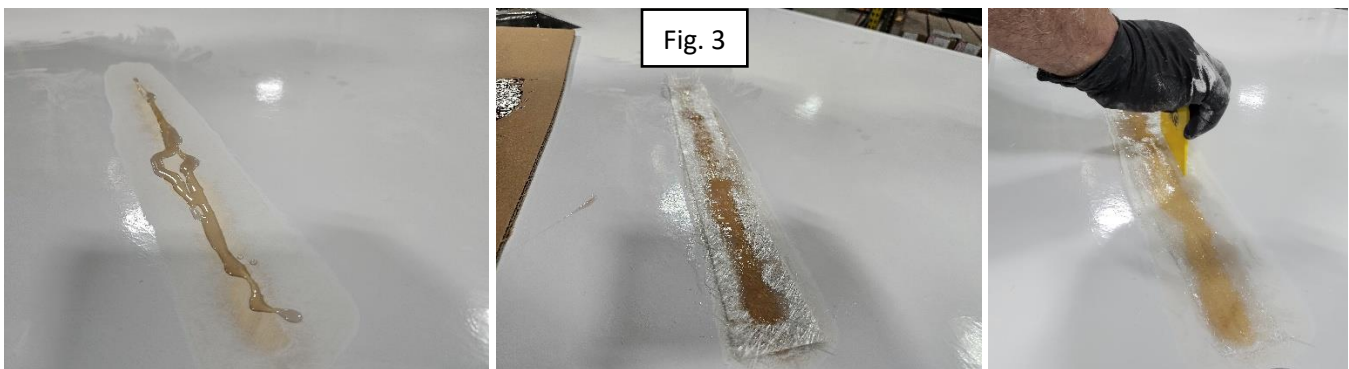
Incident:	The filon roof develops a stress crack (18" - 30").
Affected Units:	Certain 2012-2026 Jayco Embark; Certain 2012- 2026 Entegra Coach Anthem, Aspire, Cornerstone, Reatta XL, and Reatta
Parts List:	N/A
Misc. Tools & Supplies:	Latex/Neoprene Gloves Grinder Sandpaper Fiberglass Mat (Fiber Mat) Resin Body Filler Gelcoat Self-level Sealant Paint brush (or spreader) & Mat Roller. (Purchase all supplies locally).

FILON ROOF REPAIR INSTRUCTIONS

1. Locate the crack in the Filon. (Figure 1)
2. Cover coach for dust and overspray.
3. Remove any roof mounted components and sealant that the crack runs too. (Figure 1)
4. Grind ONLY the top of the filon crack and a couple inches on both sides without going all the way through. The decking below should be just visible. (Figure 2)
 - a. **Note: This is to confirm there is no water damage to the decking and will help adhere the fiberglass mat to the cracked Filon area.**



5. Use a rag or blower to remove any excess dust/debris from the area of the crack.
6. Apply resin to the filon crack and 2 layers of resin coated fiberglass mat (cut to fit) to the cracked area. Spread the resin evenly across both pieces of the fiber mat and the crack. Let them fully cure.
 - a. **Note: The time of the curing process could vary depending on the mixture of resin being used and the ambient temperature/humidity.** (Figure 3)



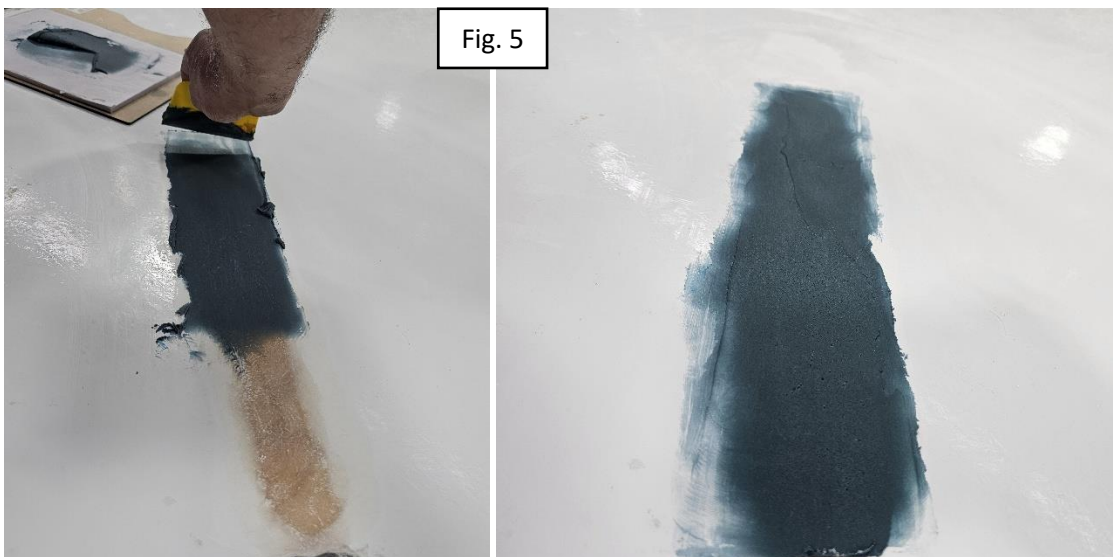
7. Once fully cured, sand the fiberglass mat, lightly, to be flush with the original filon. (Figure 4)



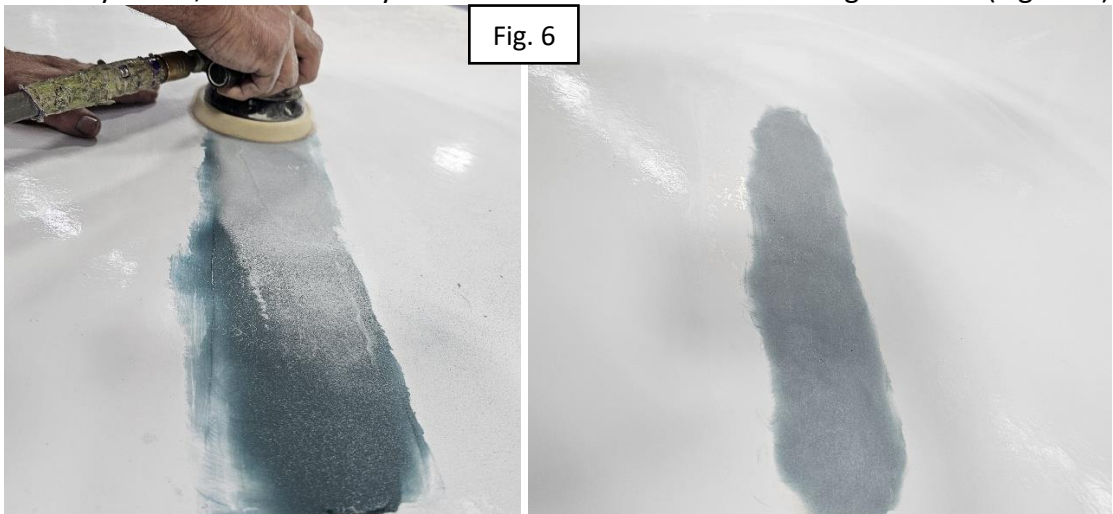
8. Use a rag or blower to remove any excess dust/debris from the area.

9. Mix and apply body filler evenly across the fiber mat and cracked area of the filon, then let fully cure.

- a. **Note: The time of the curing process could vary depending on the mixture of body filler being used and the ambient temperature/humidity.** (Figure 5)



10. Once fully cured, sand the body filler down to be flush with the original filon. (Figure 6)



11. Use a rag or blower to remove and excess dust/debris from the area.
12. Apply a final layer of the fiber mat over the body filler. Cover the fiber mat and area with gelcoat, spreading it evenly across the entire surface. (Figure 7)
 - a. **Note: You will want to remove some of the fiber from the fiber mat to make the top layer thinner than the first two layers applied. This will help give a clean finished look that better matches the fiber in the rest of the existing roof.**



13. Once fully cured, buff the area.
14. Re-install any removed roof components and re-seal the roof components.

Jayco's sole obligation under our limited warranty is to repair or replace defective materials and/or workmanship deemed our responsibility as determined by Jayco in our sole discretion. Jayco reserves the right to use new and/or remanufactured parts or materials of similar quality to complete any work, and to make parts and/or design changes as appropriate without notice to anyone. Jayco designs and/or materials changes are done without obligation to incorporate such changes in previously manufactured product. Jayco makes every reasonable effort to ensure field remedies will not adversely affect performance and/or safety of the unit. This field remedy is not intended to extend to future performance of this RV, or any of its materials, components or parts beyond the standard warranty period. The RV owner's obligation to notify Jayco, or one of its independent, authorized dealers, of a claimed defect does not modify any obligation placed on the RV owner to contact Jayco directly when attempting to pursue remedies under state or federal law.

903 South Main Street • P.O. Box 460 • Middlebury, IN 46540