

Technical Service Bulletin

Topic	35 Gearbox Malfunction Warning, DTC P0C2900 in the TCM
Market area	United States 444 Volkswagen of America, Inc. (6444)
Brand	Audi
Transaction No.	2050723/8
Level	EH
Status	Released for publishing
Release date	Oct 17, 2025

Diagnostic trouble codes

Diagnostic address	Diagnostic trouble code	Fault symptom	Storage state
0002 - Transmission electronics	P0C2900: Auxiliary Transmission Fluid Pump Driver Circuit Performance		static

New customer code

Object of complaint	Complaint type	Position
transmission -> transmission control operation	functionality	
transmission -> power distribution, transmission of power	functionality	
information, navigation, communication, entertainment -> malfunction display symbols -> transmission malfunction display	functionality -> activates	
transmission -> operation, shift and power distribution control	functionality	
information, navigation, communication, entertainment -> driver information system (DIS, MFI, MMI) -> text display	functionality -> activates	
transmission -> power distribution, transmission of power -> transmission of power -> transmission of power in transmission	functionality -> operation sequence incorrect	

Vehicle data

A3 USA MY17-18 with DQ381, PR Code 0IJ

Sales types

Type	MY	Brand	Designation	Engine code	Gearbox code	Final drive code
8V*	2017	A		*	*	*
8V*	2018	A		*	*	*

Chassis numbers

Manufacturer	Filler	Type	Filler	MY	Factory	From	To	Prod from	Prod to
WAU	*	FF	*	H	*	000001	999999		
WAU	*	FF	*	J	*	000001	030111		

PR numbers

PR numbers

?:with OIJ

Documents

Document name

master.xml

repair_instructions.pdf

Condition

REVISION HISTORY		
Revision	Date	Purpose
8	-	Revised <i>Condition</i> (Corrected typo in Revision History)
7	03/21/2025	Revised <i>Condition</i> (Added DTC)
6	05/22/2024	Revised header (Added VIN break)

You should not use the Guided Fault Finding test plan to complete this TSB. It is therefore not necessary to charge the battery.

Customer states:

- The “Gearbox Malfunction”/”Gearbox Fault” message has appeared in the Drivers Information Screen (DIS).

and/or

- The gearbox warning lamp is lit up in the driver information system.

and/or

- The gearbox is in emergency running mode; it is only possible to use gears 1-3-5-7 or only possible to use gears 2-4-6.

Workshop findings:

- One or more of the customer statements can be reproduced.

One or more of the following DTC may be logged (intermittent/static) in the transmission control module (TCM), - J217- (address word 0002):

- **DTC P0C2900** (Auxiliary Transmission Fluid Pump Driver Circuit Performance)

and/or

- **DTC P175E00** – Clutch 1 closes unintentionally

and/or

- **DTC P176F00** – Clutch 2 closes unintentionally

and/or

- **DTC P175D00** – Clutch 1 opens unintentionally

and/or

- **DTC P176E00** – Clutch 2 opens unintentionally

and/or

- **DTC P072C00** – Gear 1 not adjustable

and/or

- **DTC P176A00** – Gear positioner 1 cannot be regulated

and/or

- **DTC P176B00** – Gear positioner 2 cannot be regulated

and/or

- **DTC P176C00** – Gear positioner 3 cannot be regulated

and/or

- **DTC P176D00** – Gear positioner 4 cannot be regulated

and/or

- **DTC P072B00** – Gear R cannot be regulated

and/or

- **DTC P081000** – Clutch control malfunction

and/or

- **DTC P060700** – Control module implausible

and/or

- **DTC P189900** – Clutch 2 function restriction

In addition to the event memory entries listed, various other event memory entries may also be logged in diagnostic address 0002 – Transmission control module.

Technical Background

Component related issue of auxiliary hydraulic pump 1 (-V475-) for gear oil (Figure 1, item 1).

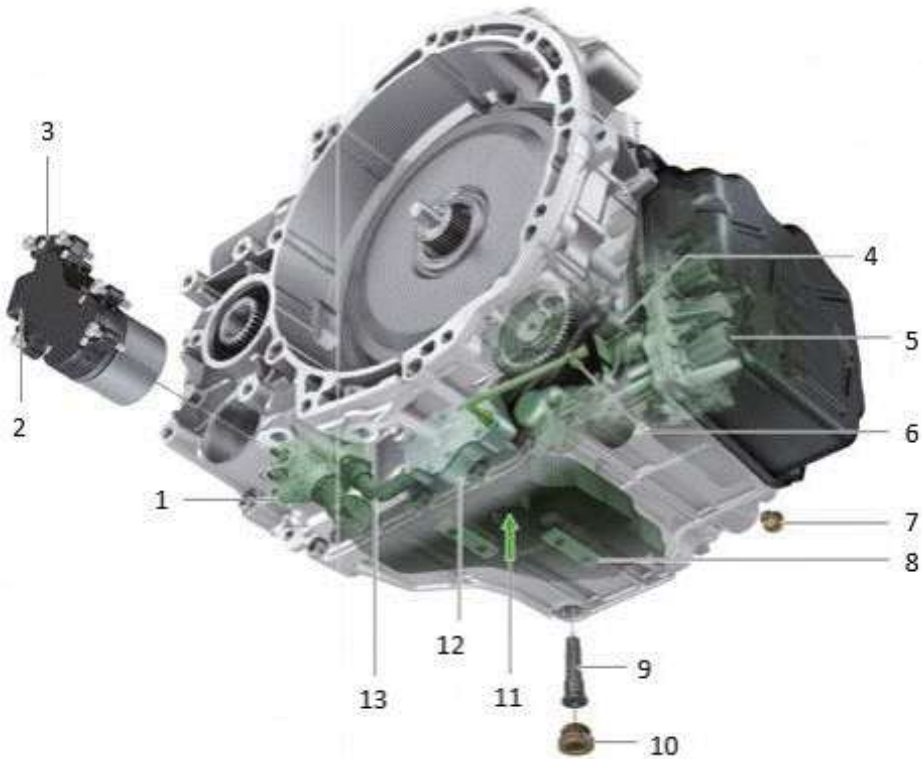


Figure 1. OGC Gearbox Components.

Legend for figure 1:

- Item 1:** auxiliary hydraulic pump 1 for gearbox oil (V475)
- Item 2:** electrical connection for auxiliary hydraulic pump 1 for gearbox oil (V475)
- Item 3:** electric motor for auxiliary hydraulic pump 1 for gearbox oil (V475)
- Item 4:** main ATF pump

Production Solution

Optimized auxiliary hydraulic pump 1 for gearbox oil (-V475-) introduced to production:

- From transmission production date 09/27/2017 onwards

! NOTICE

Before starting any checks, please find out the production date of the transmission and determine whether this TSB applies based on the production date.

Service

Before performing the following work, check whether there are any other TSBs for the event memory entries. If so, complete those TSBs first.

Test step – checking transmission production date:

Obtain the transmission identification information from the bell housing (Figure 2).

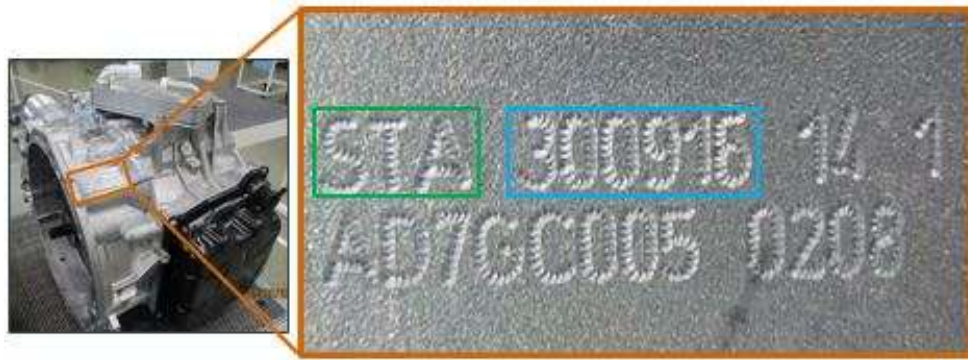


Figure 2. Transmission identification example.

Explanation of data on gearbox:

Gearbox code: STA (green box)

Gearbox Production Date: 300916 = 30.09.2016 (blue box). Date format: Day/Month/Year.

- If the gearbox production date is after 26.09.2017, this TSB does not apply. Proceed according to Guided Fault Finding. Please note that in this case, the costs for the repair cannot be billed under this TSB.
- If the gearbox production date is on or before 26.09.2017, continue as described below.

Scenario 1: Only required for vehicles on which the 34L4 Service Action has **not** been performed.

- Replace the auxiliary hydraulic pump according to the instructions in the attachment.

Scenario 2: Only required for vehicles on which the 34L4 Service Action has already been performed and no parts were replaced as a part of the campaign.

The 34L4 Service Action has been performed on the vehicle, and the auxiliary hydraulic pump was not replaced, and only the DTC “P0C2900 – Auxiliary Transmission Fluid Pump Driver Circuit Performance” is logged in the transmission control module (TCM), J217 (address word 0002).

Replace the auxiliary hydraulic pump according to the instructions attached to this TSB (Figure 3 or Figure 4), and the parts information listed below. The event memory of the gearbox electronics (diagnostic address 002) must then be erased according to the attached instructions.



Figure 3. Attachments tab in ElsaPro.

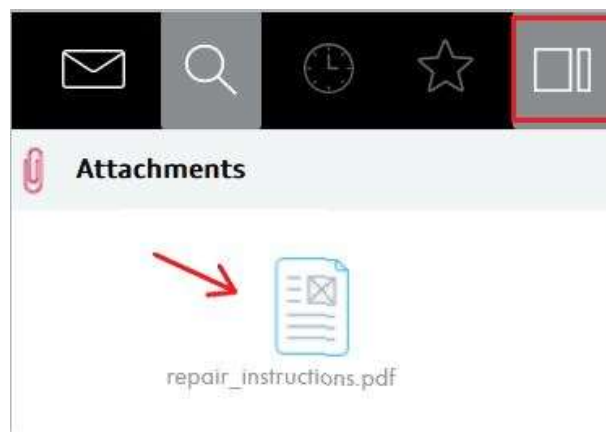


Figure 4. Attachments slide in Elsa2Go.

For an example of the repair procedure, see the video located at:

<https://audi-external.kzoplatform.com/player/medium/2535675175601443997>

This video is also attached to this TSB under the attachments tab in the workshop manual and can be accessed with the QR code shown here (Figure 4).



Figure 4. Please scan this QR code to view the supporting video on your phone or tablet.

Scenario 3: Only applies if the 34L4 Service Action has been performed and the auxiliary hydraulic pump was replaced as a part of the campaign.

- If the 34L4 Service Action has been performed on the vehicle and the auxiliary hydraulic pump was replaced as a part of the campaign, this TSB **does not apply**, and you should proceed according to Guided Fault Finding.

! NOTICE

If you find secondary damage on the dismantled transmission or damage to adjacent components, follow the instructions in the Workshop Manual which apply at this time. To invoice the extended repair (including component replacement if applicable) via this TSB, upload relevant photos to Doc-IT.

When billing, please always attach photos/videos that clearly shows the complaint to DOC-IT. To ensure a reference to the vehicle, the image/video must:

- Include the VIN and date.
- Must not be edited.
- Should be in focus and taken with sufficient light. A high resolution is not necessary.

If appropriate, please mark the location of the problem so that parts analysis has a clear reference to the complaint. Please ensure that the photo documentation does not show any persons and/or face, license plates, or customer data.

Warranty

Claim Type:	<ul style="list-style-type: none">• 1GW up to 10 years or 120,000 miles – see AWA-23-08.• If the vehicle is outside any warranty, this Technical Service Bulletin is informational only.
Service Number:	3479

Damage Code:	0010		
Labor Operations:	Remove and install gearbox	3435 19 xx	See SRT with associated operations
	Replace hydraulic pump (Front Wheel Drive Only)	3479 5599	350 TU
	Replace hydraulic pump (All Wheel Drive Only)	3479 5599	380 TU
	GFF	0150 0000	Time stated on the diagnostic protocol
	Charge Battery	2706 8950	See SRT with associated operations
Claim Comment:	As per TSB 2050723/7		

All warranty claims submitted for payment must be in accordance with the *Audi Warranty Policies and Procedures Manual*. Claims are subject to review or audit by Audi Warranty.

Required Parts and Tools

The part numbers published in this TSB are correct at the time of publication. Interim updates made in ETKA can cause a listed part number to become unavailable. In this case, the new part number specified in ETKA should be used.

Part Number	Part Description	Quantity
See ETKA	Fasteners, Bolts, Nuts and Screws as needed per the Repair Manual	See ETKA/ELSA
D 174 003 M2	Sealant	1
G 055 529 S0	Dual clutch gearbox oil	7
WHT 000 729 A	Bolt (For noise insulation)	5
N 103 320 02	Nut (For transverse link)	6
N 015 081 6	Nut (For coupling rod)	2
N 912 010 01	Bolt (For pendulum support)	1
N 107 848 01	Bolt (For pendulum support)	1
N 107 847 01	Bolt (For pendulum support)	1
N 105 524 02	Bolt (For steering rack)	2
N 908 461 02	Bolt (For front propeller shaft) only for vehicles with all-wheel drive	3
N 910 669 01	Bolt (For center propeller shaft) only for vehicles with all-wheel drive	4

WHT 005 179	Bolt (For rear propeller shaft) only for vehicles with all-wheel drive	3
N 911 082 01 Or N 909 910 02	Bolt For drive shaft (For gearbox mounting)	6 or 12
N 105 524 04	Bolt (For gearbox mounting)	3
N 107 854 01	Bolt (For assembly mounting)	6
N 912 312 01	Bolt (For assembly mounting)	4
N 910 889 01	Bolt (For bevel box) only for vehicles with all-wheel drive	4
0BH 325 147	Retaining clip (For mechatronics unit cover)	1
0GC 927 377	Gasket (mechatronics unit connector – only required in the event of damage)	1
0GC 398 008 D	Repair kit (For auxiliary hydraulic pump)	1
06B 105 313 C or 06B 105 313 D	Needle bearing (order to VIN)	1

Additional Information

All parts and service references provided in this TSB (**2070723**) are subject to change and/or removal.

©2025 Audi of America, Inc. All rights reserved. The information contained in this document is based on the latest information available at the time of printing and is subject to the copyright and other intellectual property rights of Audi of America, Inc., its affiliated companies, and its licensors. All rights are reserved to make changes at any time without notice. No part of this document may be reproduced, stored in a retrieval system, or transmitted in any form or by any means, electronic, mechanical, photocopying, recording, or otherwise, nor may these materials be modified or reposted to other sites without the prior expressed written permission of the publisher.