

# Technical Service Bulletin

<b>Topic</b>	Rotating display/screen - Fault diagnosis - Mechanical malfunction DTC B140107 is evident within 005F
<b>Market area</b>	Bentley: worldwide (2WBE), China 796 VW Import Comp. Ltd (Vico), Beijing (6796)
<b>Brand</b>	Bentley
<b>Transaction No.</b>	2075532/3
<b>Level</b>	EH
<b>Status</b>	Released for publishing
<b>Release date</b>	Sep 24, 2025

## Diagnostic trouble codes

Diagnostic address	Diagnostic trouble code	Fault symptom	Storage state
005F - Information electronics 1	B140107: Mechanics of display unit 1 for multimedia system mechanical malfunction		static
005F - Information electronics 1	B140107: Mechanics of display unit 1 for multimedia system mechanical malfunction		Intermittent

## New customer code

Object of complaint	Complaint type	Position
information, navigation, communication, entertainment -> radio, navigation, MMI and drive device functions -> extend screen	functionality -> no function	
information, navigation, communication, entertainment -> radio, navigation, MMI and drive device functions -> retract screen	functionality -> operation sequence incorrect	

# Vehicle data

## New Continental GT / C and New Flying Spur

### Sales types

Type	MY	Brand	Designation	Engine code	Gearbox code	Final drive code
Z23*	2025	E		*	*	*
Z23*	2026	E		*	*	*
Z24*	2025	E		*	*	*
Z24*	2026	E		*	*	*
Z32*	2025	E		*	*	*

Z32*	2026	E		*	*	*
------	------	---	--	---	---	---

## Documents

Document name
<a href="#">master.xml</a>
<a href="#">brdflowchart.pdf</a>

## Condition

- Bentley Rotational Display (BRD) operational issues
- Mechanical malfunction DTC B140107 evident within 005F

## Technical Background

### Revision history

TPI 2067955/4 - Attached flow chart process has been revised, the process now confirms what the operative must do if the VIN is later than SCBCA13S3KC073865 or if TPI 2065897/- was conducted and the issue is still evident



**Depending on the symptom the operative must ensure the TPI's below have been referred to and conducted as required**

- 2065895/- Rotating display/screen noise - Diagnosis for complaints relating to noise during operation and/or during a drive cycle
- 2065896/- Rotating screen alignment - Minimum standards could not be achieved
- 2065897/- Rotating display inoperative - Rotating display may fail to function or stick in one position DTC B140107 within 005F (Up to VIN SCBCA13S3KC073865)

### CAUTION

In the event the BRD is unresponsive (BRD will not rotate), the BRD unlock procedure within Rep.Gr 91 (Rotating display - Manual unlock) should be referred to and conducted to remove the Veneer, dials

### WARNING

The operative should follow the process to unlock the BRD, attempting to rotate the BRD manually can cause damage to the drive belt

### CAUTION

CAUTION: In the event that damage was caused by attempting to rotate the BRD manually without following the unlock procedure within Rep.Gr 91 (Rotating display - Manual unlock) the applicable warranty claim may be cancelled

## Production Solution

Not applicable

## Service



### NOTICE

**"VERY IMPORTANT: The following steps MUST only be conducted if instructed via the attached flowchart"**

1) Using ODIS carry out Guided Fault Finding (GFF) to check for the presence of DTC B140107 or any other applicable BRD related DTC's (Static or Intermittent)

- Save an online protocol (First log)
- Attempt to clear all fault codes
- Exit GFF
- Cycle the ignition (x3) times
- The diagnostic log should be attached to a new or existing open DISS query



**IMPORTANT: If the complaint is still evident and DTC B140107 is still present, complete the applicable test plan using ODIS ensuring all instructions are completed**

2) Carry out a 12 volt battery test - Rep.Gr 27 - Save the print out results as these may be required to be uploaded to a new or existing DISS query



**In the event the 12 volt battery voltage is not to specification, please ensure this is rectified first as this could be the contributing factor to BRD functionality issue(s)**

3) Initialise the rotating display - Refer to Rep.Gr 91 - Rotating display - To initialise

- Recheck the functionality of the BRD unit

In the event the issue is now resolved after the battery issue has been rectified, no further action is required

Or

In the event the issue is still evident continue with the remaining instructions as detailed within the attached flowchart

4) Figures 1 and 2 show an example of the display clocks and/or dials fascia unclipped)



**Please note: The BRD must be removed (Rep.Gr 91) to allow visual inspection of the panel at the back of the BRD for signs of unclipping (Figure 2)**



Figure 1

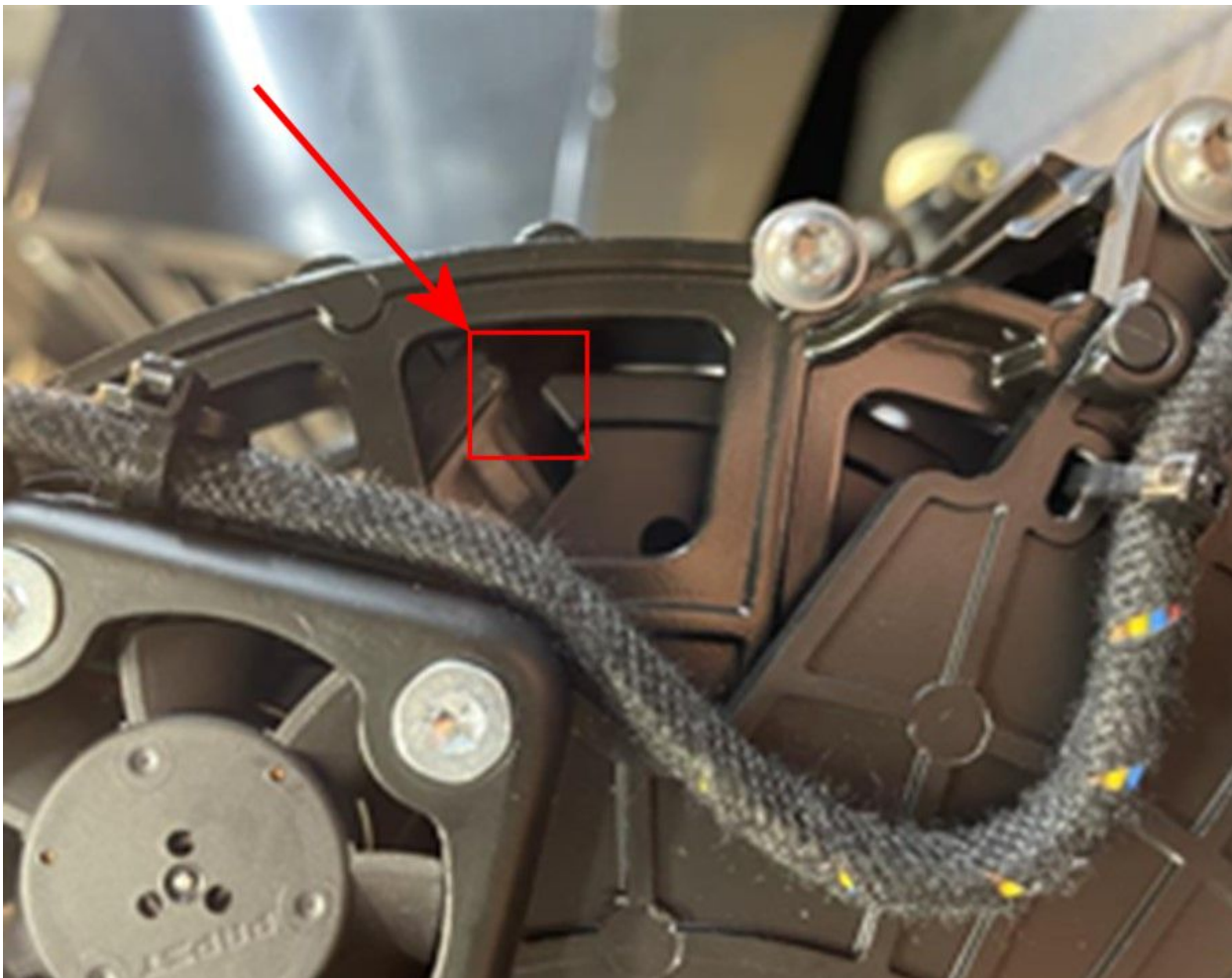


Figure 2

**NOTICE**  
"VERY IMPORTANT: The following steps MUST only be conducted if instructed via the attached flowchart"

5) Remove **All** anti creak tape from the (x4) locations shown for the Display clocks and dials fascia and Veneer fascia) as shown in Figure 3

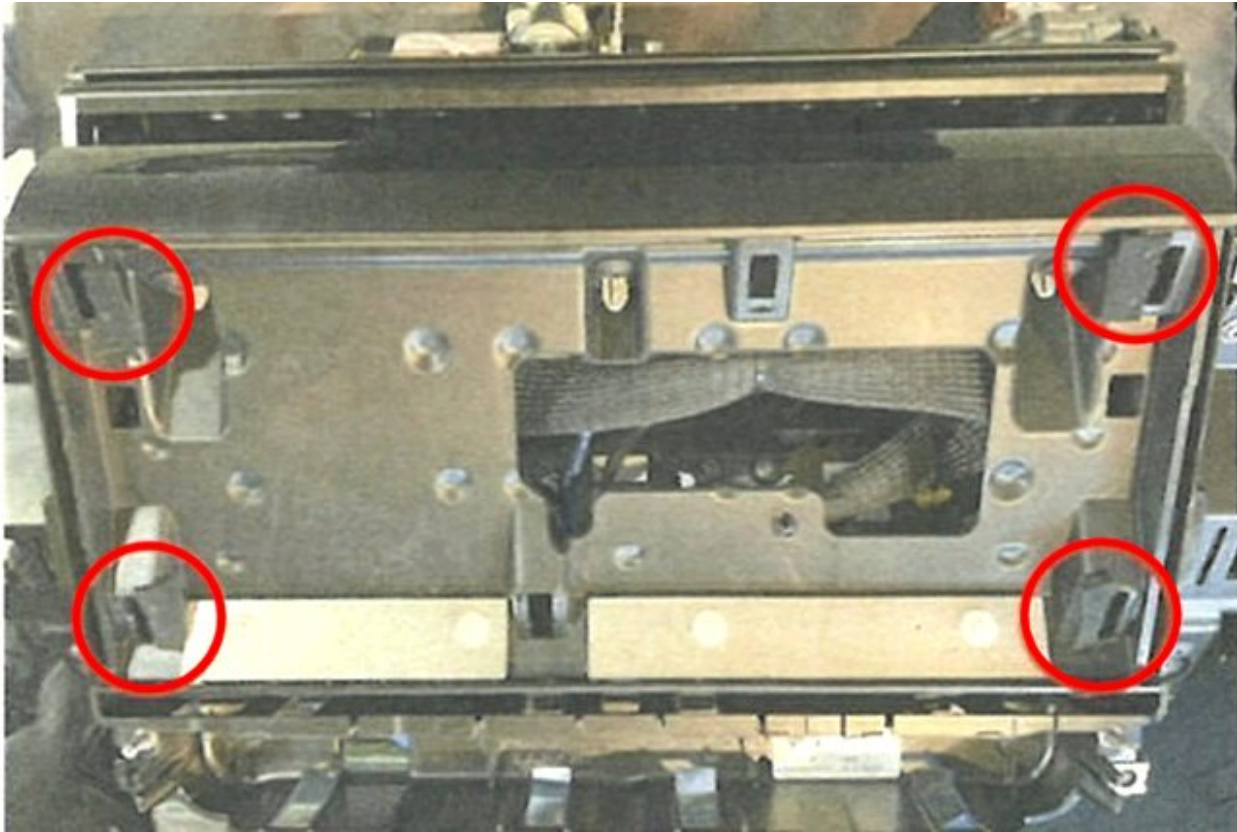


Figure 3

6) Adjust the plain veneer fascia and the dial veneer fascia as required - Refer to Rep.Gr 70 and Rep.Gr 91

7) Bearing displacement check

- **HINT: Referring to Figures 4 and 5, if there is a large gap on one side of the fascia panel and a small gap on the opposing side or a report of clashing with driver fascia or clunking the operative should check to confirm the bearings of the unit have not displaced as shown in Figure 6**

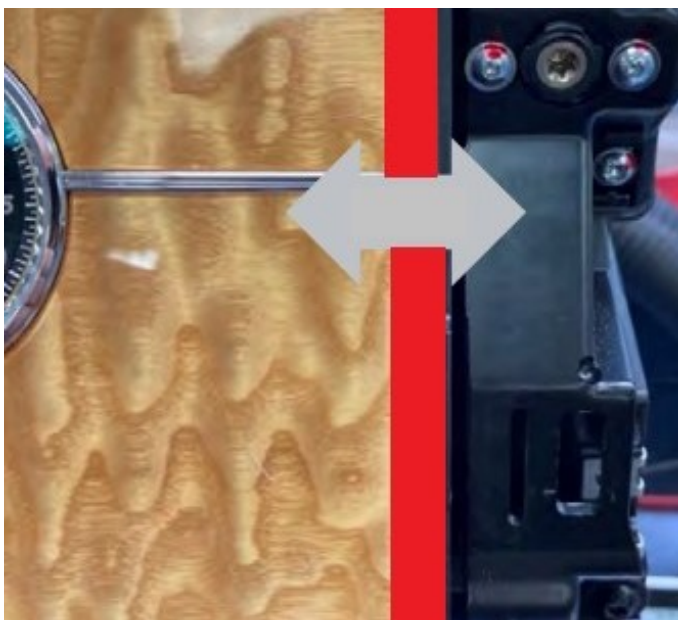


Figure 4

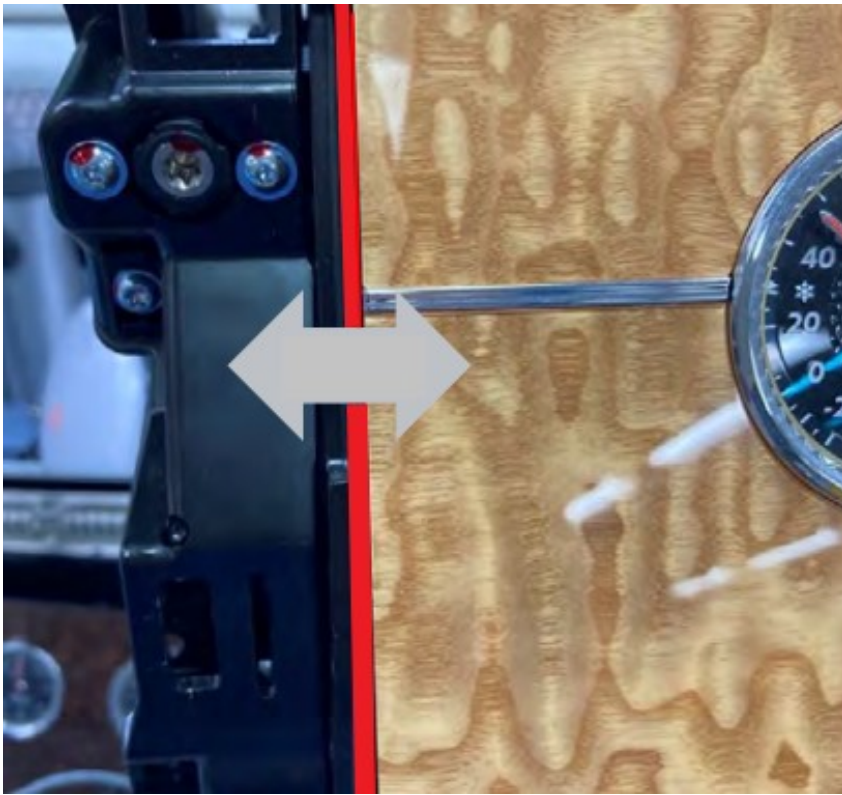


Figure 5



Figure 6

8) Belt drive check (Figure 7)

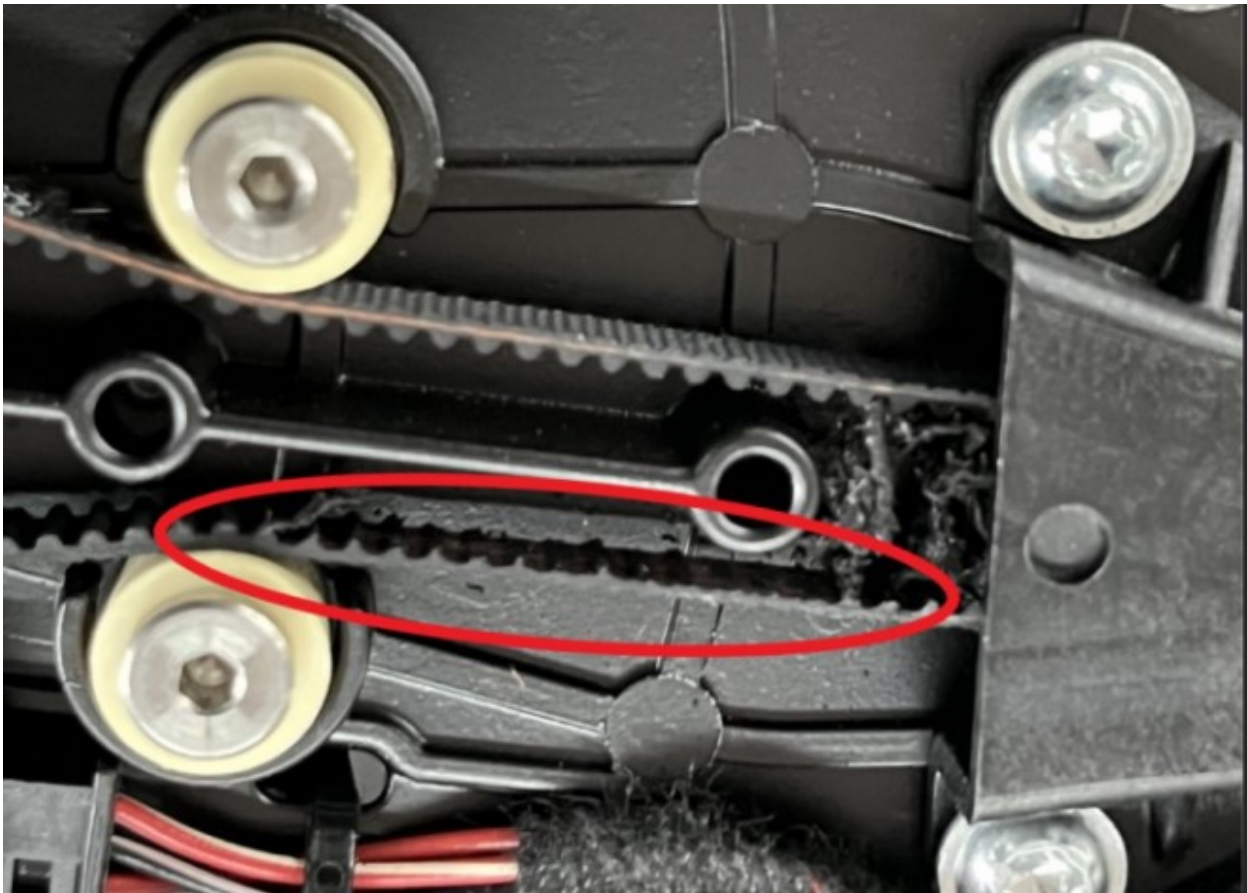


Figure 7

**NOTICE**

In the event the issue is still evident please respond via the existing DISS query or raise a new technical DISS query

## Warranty

Warranty type 110 or 910

Damage service number 91 32

Damage code 00 10

### Removal and refitting of the rotating display

Labour operation code 91 32 19 01

Time 110 Time units

### Diagnosis time using ODIS

Labour operation code 01 50 00 00

Time As per ODIS log (must not exceed 50 Time units)

### Battery test

Labour operation code 27 06 01 00

Time 10 Time units

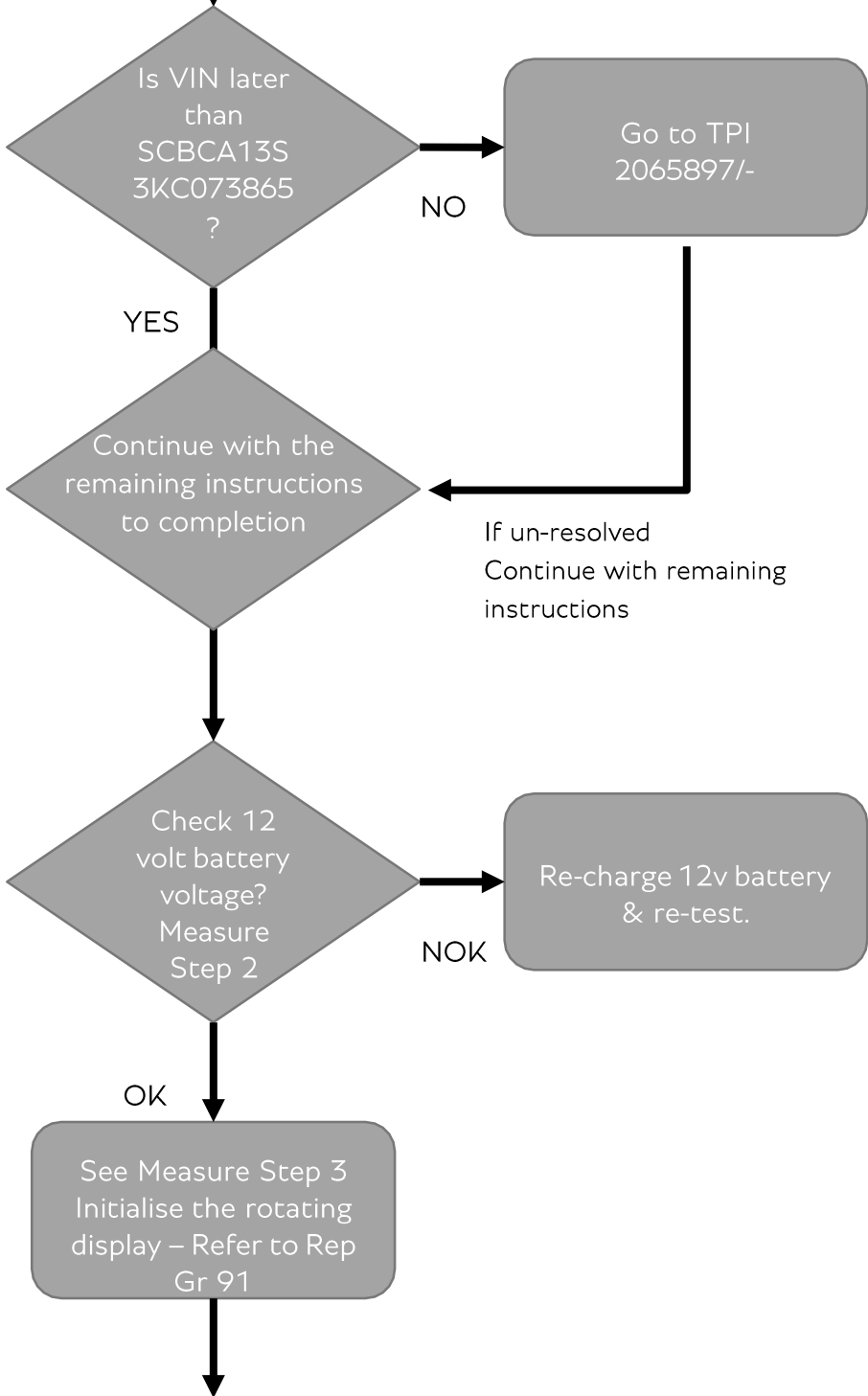
## Required Parts and Tools

In the event that the rotating display and control module were replaced within the applicable warranty period, please ensure that both parts are returned for analysis

However

In the event that only the control module was replaced please return the control module only for analysis

Confirm symptom is relevant for TPI.  
DTC B140107 Mechanics of display unit 1 for multimedia system  
mechanical malfunction is evident within 005F.  
  
AND/OR  
  
Bentley Rotational Display (BRD) operational issues.  
  
See Measure Step 1



Note: for the BRD to rotate it must be correctly balanced.  
For example screen, plain & gauge fascia's fitted.  
x1 Balance weight removed for E revision screen & chrome pinstripe fascia's.

