

Technical Service Bulletin

Topic	Grease evident at the front lower ball joint bellows
Market area	Bentley: worldwide (2WBE),China 796 VW Import Comp. Ltd (Vico), Beijing (6796)
Brand	Bentley
Transaction No.	2074957/3
Level	EH
Status	Released for publishing
Release date	Sep 24, 2025

New customer code

Object of complaint	Complaint type	Position
chassis -> steering, steering assist	component, automotive fluids	
chassis -> level control system, pitch and roll compensation	leaks	
vehicle service -> inspection, maintenance -> performing a service	service: process -> with complaint confirmation	
chassis -> wheel suspension, suspension, damping	leaks	

Vehicle data

New Continental GT / C and New Flying Spur

Sales types

Type	MY	Brand	Designation	Engine code	Gearbox code	Final drive code
Z23*	2025	E		*	*	*
Z23*	2026	E		*	*	*
Z24*	2025	E		*	*	*
Z24*	2026	E		*	*	*
Z32*	2025	E		*	*	*
Z32*	2026	E		*	*	*

Documents

Document name
master.xml

Condition

Grease evident on or around the front axle lower ball joint bellows

In the event the symptom is as described, the operative should carry out the instructions within the Measure section

Technical Background

During service work and/or other repairs, a loss of grease can be detected from the front axle lower ball joint on one or both lower ball joint bellows

Production Solution

Not applicable

Service



Findings performed on supposedly damaged components have shown that they were of good quality, no damage was found to the ball joint bellows which could of resulted in the leak

Grease may leak during the initial assembly of the front lower levers. This due to a maximum deflection of the conical spigot before the lower lever is assembled into the wheel carrier. Over the service life, additional foreign bodies can collect in the corresponding area and stick to the excess grease, which can then be distributed over a larger area

If there is no customer complaint about noises (rattling, pinching, creaking) from the area of the front axle and the lower levers have clearance, the operative must remove any excess grease and check the ball joint and bellows for damage

If the ball joint/bellows is not damaged, the lower lever does not need to be replaced

The level of grease on or around the lower ball joint boot/wheel bearing housing (Figures 1,2 and 3) is deemed as a normal characteristic

“Normal” Characteristic:



Figure 1



Figure 2



Figure 3



If the ball joint is worn/damaged or the ball joint bellows is split/damaged (as shown in Figures 4 and 5) the lower front lever must be replaced – Refer to Rep.Gr 40

IMPORTANT: Prior to replacing the lower lever the operative **MUST** raise a Technical DISS query requesting permission to replace the front lower lever

“Torn/split bellows” - Replacement necessary

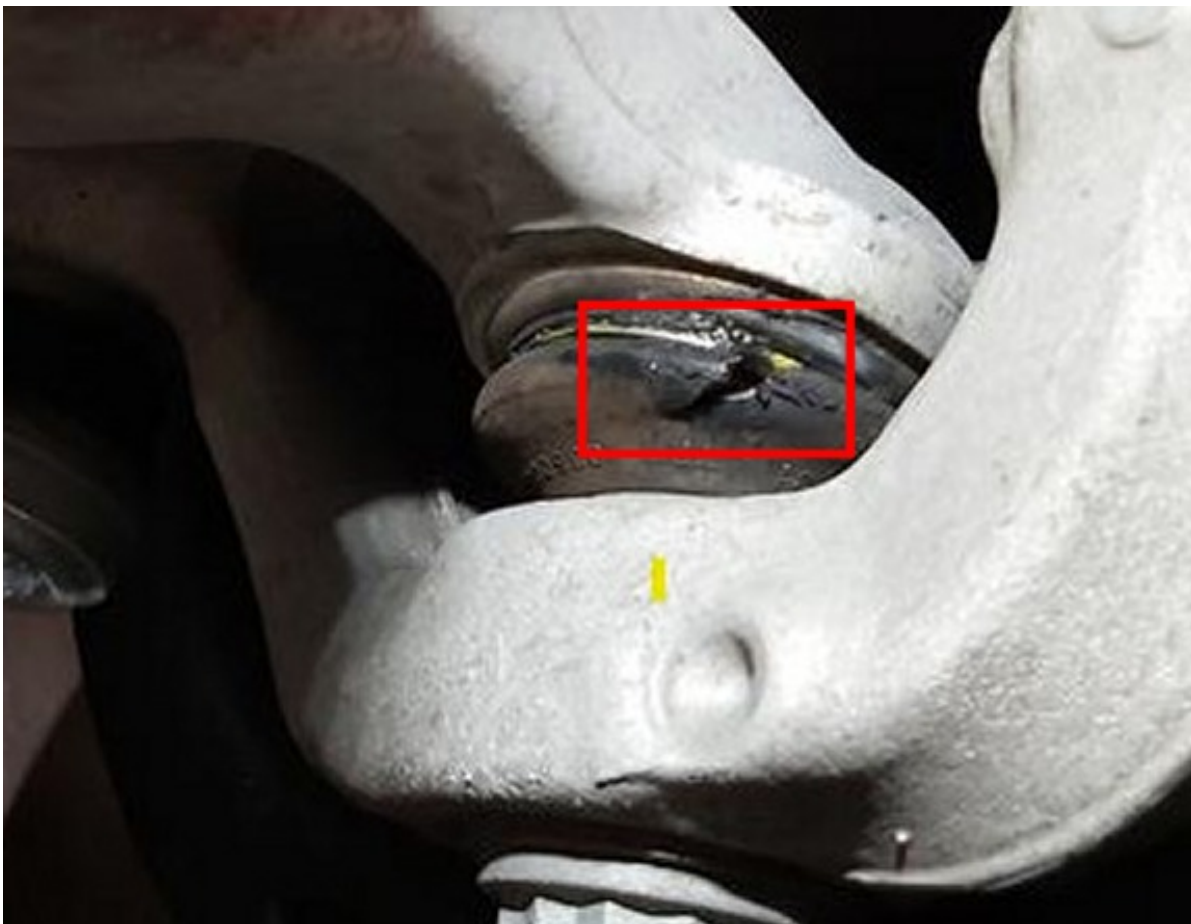


Figure 4



Figure 5