

Technical Service Bulletin

Topic	Bentley Rotational Display (BRD) clashing with the switch pack during rotation
Market area	Bentley: worldwide (2WBE),China 796 VW Import Comp. Ltd (Vico), Beijing (6796)
Brand	Bentley
Transaction No.	2075740/2
Level	EH
Status	Released for publishing
Release date	Sep 24, 2025

New customer code

Object of complaint	Complaint type	Position
information, navigation, communication, entertainment -> radio, navigation, MMI and drive device functions -> extend screen	functionality -> no function	
information, navigation, communication, entertainment -> radio, navigation, MMI and drive device functions -> retract screen	functionality -> operation sequence incorrect	

Vehicle data

New Continental GT / C and New Flying Spur

Sales types

Type	MY	Brand	Designation	Engine code	Gearbox code	Final drive code
Z23*	2025	E		*	*	*
Z23*	2026	E		*	*	*
Z24*	2025	E		*	*	*
Z24*	2026	E		*	*	*
Z32*	2025	E		*	*	*
Z32*	2026	E		*	*	*

Documents

Document name
master.xml

Condition

Bentley Rotational Display (BRD) clashing with the MMI switch pack during rotation

Technical Background

Refer to the Measure section of this TPI

Production Solution

Not applicable

Service

1) Conduct a visual inspection of all (3) BRD faces checking for any signs of clashing / damage at the locations shown in Figure 1 (POINT 1 and POINT 2)



Figure 1



Should any issues be evident with the BRD faces or MMI switch pack the operative must raise a technical DISS query and await feedback before conducting any further work

Or

- Should no issues be evident please continue with the remaining instructions

2) Referring to Rep.Gr 96 - Remove the MMI switch pack

3) Referring to Figure 2 - Cut (x2) of 3W0 800 865 1DJ (Brown tape)

- Ensure the surface of the BRD frame is clean - Apply the tape at the locations shown on left and right hand side of BRD frame (next to the switch pack locating pins)

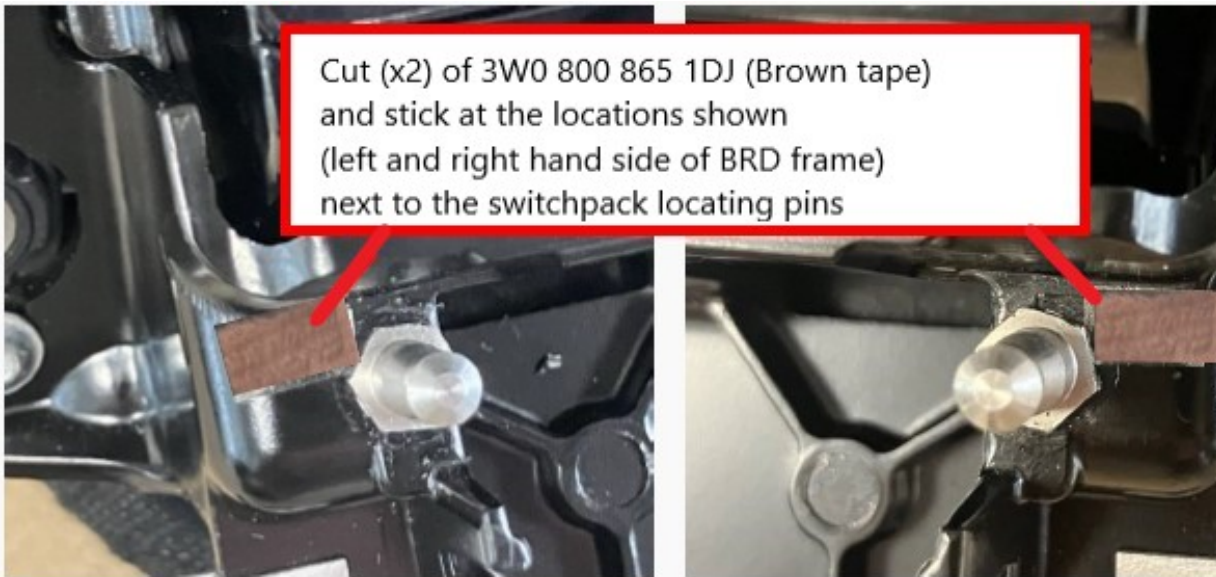


Figure 2

4) Refit the switch pack

5) Referring to Figure 3 - Measure the profile of the switch pack to confirm the correct tolerance has been achieved

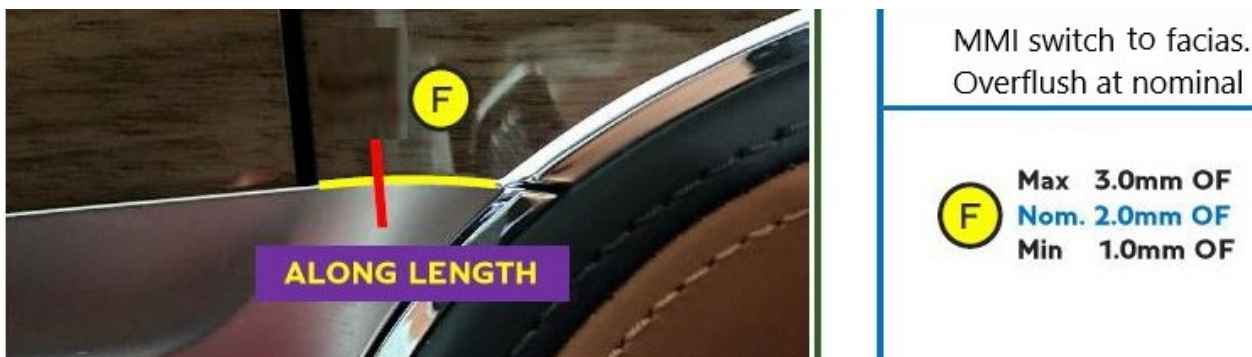


Figure 3

- Should the required tolerance be achieved - Rotate the BRD with care to confirm the issue is resolved
- If resolved no further action is required

NOTICE

In the event the issue is still evident or the required tolerance cannot be achieved please respond via the existing DISS query or raise a new technical DISS query

Warranty

Warranty type 110 or 910

Damage service number 91 10

Damage code 00 10

Time to remove and refit the switch pack

Labour operation code 91 10 19 01

Time 10 TU

Time to cut and apply the tape

Labour operation code 91 10 49 95

Time 10 TU

Required Parts and Tools

x1 roll - 3W0 800 865 1DJ (Brown tape)