

M2 Terminating Resistor Missing

Date: October 08, 2025
Bulletin Name: REL-IB-026
Model: Rear Loader M2
Model Year: 2025
Units Affected: M2

Purpose

McNeilus Truck and Manufacturing, Inc. offers these instructions for the installation of a terminating resistor on the J1939 plug.

Please review all aspects of this communication carefully. If you have any questions or concerns about these product update actions, contact your McNeilus refuse vehicle service network at 1-888-686-7278.

SAFETY NOTICE

Perform your company's Lockout/Tagout procedure. If your company does not have a Lockout/Tagout procedure, follow OSHA 1910.147 and 1910.146 Confined Space as appropriate.

SAFETY NOTICE

Use appropriate Personal Protective Equipment (PPE) as required by your company.

Tools and Equipment Required

Technician to supply

- 9/16 socket
- Deutsch Terminal removal tools

Parts Required

Purchase from McNeilus

Item	PN	Description	Qty.
1	1449230	Wire Harness, CAN T Jumper	1
2	3065419	Terminator, 1939 Plug	1

Procedure:

1. Perform your company's Lockout/Tagout procedure. If your company does not have a Lockout/Tagout procedure, follow OSHA 1910.147 and 1910.146 Confined Space as appropriate. Chock wheels and engage the service brake.
2. Locate the Power Distribution Module (PDM)/5-Port Body Module/Fuse Panel on the streetside front of body of the vehicle.
3. Remove and retain the bottom nuts (x2) and loosen the top nuts (x2) of the cover (Figure 1).



Figure 1

4. Remove and retain the cover.
5. On the new PN 1449230 CAN T jumper wire harness, remove the Deutsch 3-socket plug from the end (Figure 2).
6. The removed plug will be attached to the Data Link Cables from MCB in a later step.



Figure 2

7. On the 5-Port Body Module, locate the plug labeled MCB (on the top left side of the 5-Port module) (Figure 3).
8. Remove wires from position 7 and position 8.

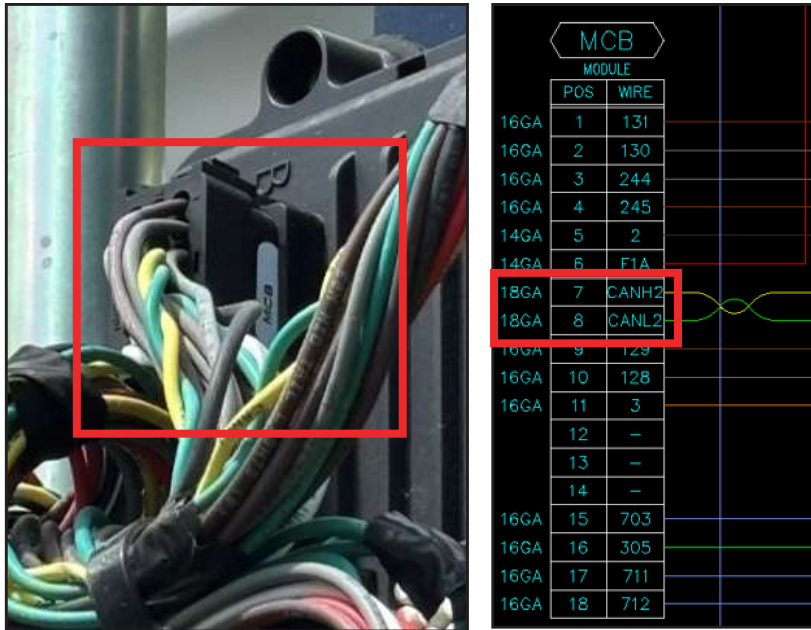


Figure 3

9. Insert the two wires from PN 1449230 into the MCB connector (Figure 4).

- Yellow wire into position 7
- Green wire into position 8

10. Insert the wires from PN 1673284 into the Deutsch 3-socket plug (Figure 4).

11. Reinsert MCB in B socket in 5-port module (Figure 4).

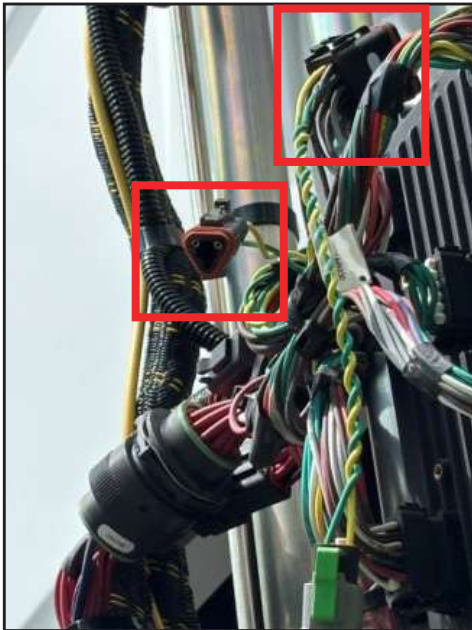


Figure 4

12. Insert PN 3065419 terminating resistor into Y socket of PN 1449230 (Figure 5).

13. Insert the Deutsch 3-socket plug with two wires from PN 1673284 into Y socket of PN 1449230 (Figure 5).

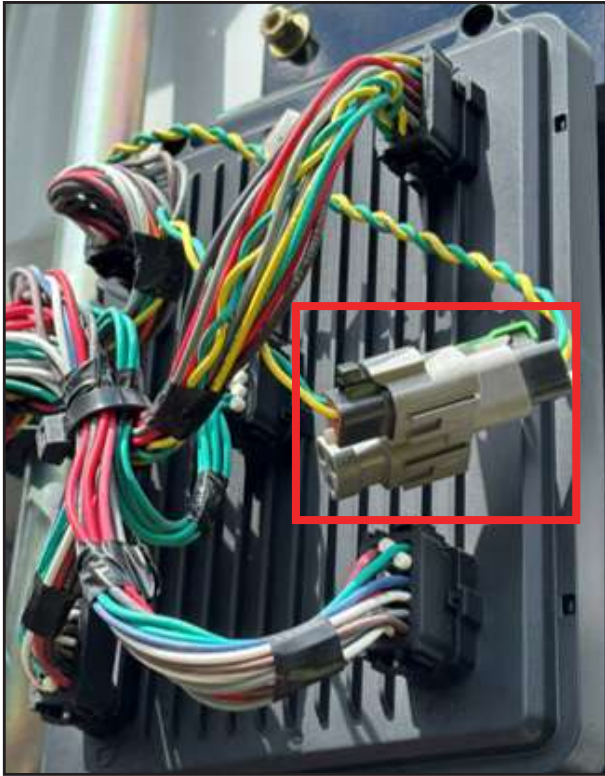


Figure 5

14. Reattach the cover and install/tighten the four nuts.
15. Installation of terminating resistor is complete.
16. Remove your company's Lockout/Tagout procedure. If your company does not have a Lockout/Tagout procedure, follow OSHA 1910.147 and 1910.146 Confined Space as appropriate. Remove wheel chocks and disengage the service brake.
17. Return the vehicle to service.

Continuous Improvement:

The change included in this document is part of the McNeilus Continuous Improvement Process.

McNeilus's quality policy is providing customer satisfaction through innovative products, dedicated service, and a constant focus on continuous improvement.

McNeilus[®]

(888) 686-7278

www.streetsmartparts.com