

GENERAL MOTORS
DCS7367
URGENT - DISTRIBUTE IMMEDIATELY

Date: November 4, 2025

Subject: N252526151 – Service Update
Fuel Pump Power Control

Models: 2025 Chevrolet Express
2025 GMC Savana

General Motors is releasing Service Update N252526151 today.

What Should Dealers Do: Dealers should review IVH, or the Dealer Maxis reports for open VINs in their inventory. Dealers can view the attached bulletin, and it will also be displayed in Service Information tomorrow.

The Stock VIN list of vehicles in dealer inventory or in-transit is attached to this message. Note: this list is only accurate at the time of report creation and all VINs should be validated in IVH prior to repair.

The Inventory tab of the Open Vehicle Report will contain Service Update Bulletin VINs that apply to this field action. This information is intended to assist dealers with the **PROMPT COMPLETION** of these vehicles. The Customer In-Service tab will not contain Service Update Bulletin VIN data because the intent of a Service Update Bulletin is to not inconvenience a customer with a special trip for service. Service Update Bulletins are to be completed when the customer is in for a regularly scheduled visit.

END OF MESSAGE

Service Update

N252526151 Fuel Pump Power Control Module



Release Date: November 2025

Revision: 00

Attention: This service update includes vehicles in dealer inventory and customer vehicles that return to the dealership for any reason. This bulletin will expire November 30, 2040.

Investigate Vehicle History (IVH) in the GM Global Warranty Management system MUST always be checked to confirm vehicle involvement and MUST be in OPEN status prior to beginning any required inspections and/or repairs. DO NOT use Service Information with VIN search, as it will not verify the VIN eligibility for field actions.

Make	Model	Model Year	
		From	To
Chevrolet	Express	2025	2025
GMC	Savana	2025	2025

Investigate Vehicle History (IVH) in the GM Global Warranty Management system MUST always be checked to confirm vehicle involvement and MUST be in OPEN status prior to beginning any required inspections and/or repairs. DO NOT use Service Information with VIN search, as it will not verify the VIN eligibility for field actions.

Condition	Certain vehicles listed above may have a condition which can cause the fuel pump power control module to fail. If this were to occur, fuel flow to the engine could be interrupted.
Correction	Dealers will inspect, and if necessary, replace the fuel pump power control module.

Parts

Quantity	Part Name	Part No.
1	Fuel Pump Power Control Module	13554821

Reminder: Parts may be removed from SPRINT and Retail Inventory Management (RIM) and be non-returnable. Dealers should review the affected parts to confirm RIM managed status. Parts may have quantity limiters in effect. There are a small number of vehicles anticipated that will need this fix. Due to the limited initial parts availability, dealers are encouraged not to order these parts for use as shelf stock.

Warranty Information

Labor Operation	Description	Labor Time	Trans. Type	Net Item
9108180	Fuel Pump Power Control Module - Inspection Only	0.3	ZFAT	N/A
9108181	Fuel Pump Power Control Module Replacement (includes inspection)	0.4	ZFAT	N/A

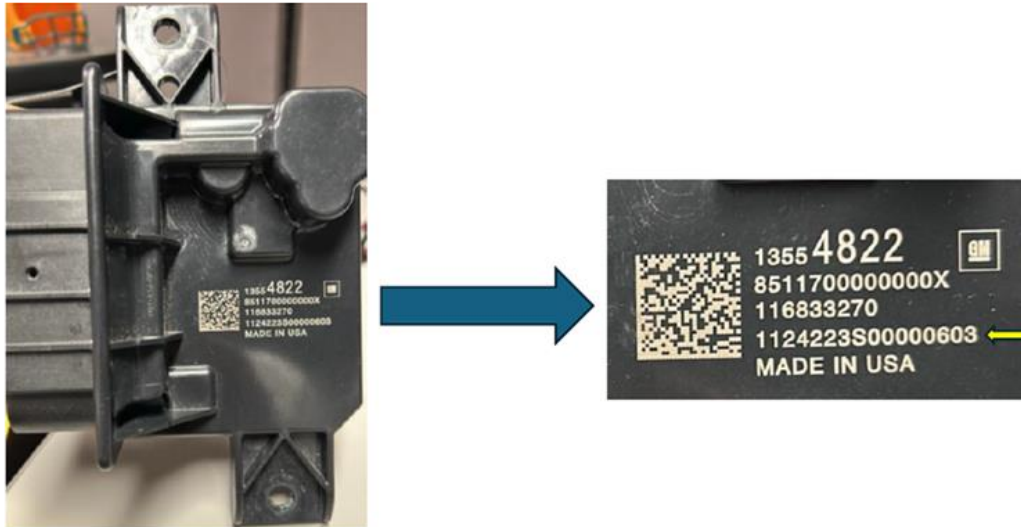
Service Procedure

Important: Service agents must comply with all International, Federal, State, Provincial, and/or Local laws applicable to the activities it performs under this bulletin, including but not limited to handling, deploying, preparing, classifying, packaging, marking, labeling, and shipping dangerous goods. In the event of a conflict between the procedures set forth in this bulletin and the laws that apply to your dealership, you must follow those applicable laws.

1. Lift the vehicle. Refer to *Lifting and Jacking the Vehicle* in SI.
2. Remove the Fuel Pump Power Control Module. Refer to *Fuel Pump Power Control Module Replacement* in SI.

Service Update

N252526151 Fuel Pump Power Control Module



7015317

- a. Inspect the Fuel Pump Power Control Module serial number as shown above.

8125208S00099304	8125208S00098404	8125208S00099203
8125208S00098001	8125208S00098901	8125208S00099301
8125208S00098002	8125208S00098902	8125208S00099303
8125208S00098003	8125208S00098903	8125208S00098201
8125208S00098004	8125208S00098904	8125208S00098202
8125208S00098101	8125208S00099202	8125208S00098204
8125208S00098103	8125208S00099302	8125208S00098301
8125208S00098304	8125208S00104502	8125208S00098302
8125208S00099001	8125208S00104601	8125208S00098303
8125208S00099003	8125208S00104602	8125208S00098401
8125208S00099004	8125208S00104603	8125208S00098403
8125208S00099103	8125208S00104604	

- b. Use the Find feature (CTRL+F) to search this document, type in the last six numbers of the number indicated above from your Fuel Pump Power Control Module to see if it is included in the above table.
 - c. If your Fuel Pump Power Control Module IS one of the ones included in this table, replace it. Refer to *Fuel Pump Power Control Module Replacement* in SI.
 - d. If your Fuel Pump Power Control Module IS NOT one of the ones included in this table, reinstall it.
3. Lower the vehicle. Refer to *Lifting and Jacking the Vehicle* in SI.

Dealer Responsibility

Whenever a vehicle subject to this service update enters your vehicle inventory or is in your facility for service through the end date as noted in the Attention box, you must take the steps necessary to be sure the service update correction has been made before selling or releasing the vehicle.

Service Update

N252526151 Fuel Pump Power Control Module



All new, used, GM Certified Pre-Owned (CPO), courtesy transportation vehicles, dealer shuttle vehicles, CarBravo, etc. in dealers' possession and subject to this field action must be held and inspected/repaired per the service procedure of this bulletin before customers take possession of these vehicles. Involved vehicles must be held and not delivered to customers, dealer-traded, released to auction, used for demonstration, or any other purpose.

All GM Certified Pre-Owned (CPO) vehicles currently in the dealers' inventory within the SHIFT Digital system will be de-certified and must be held and remedied per the service procedure in this bulletin. Upon submitting an accepted/paid warranty transaction in the Global Warranty Management (GWM) system, the vehicle can be re-certified for sale within the SHIFT Digital system, or once again be used in the Courtesy Transportation Program.

Dealer Reports – For USA and Export

The Inventory tab of the Open Vehicle Report will contain Service Update Bulletin VINs that apply to this field action. This information is intended to assist dealers with the **PROMPT COMPLETION** of these vehicles. The Customer In-Service tab will not contain Service Update Bulletin VIN data because the intent of a Service Update Bulletin is to not inconvenience a customer with a special trip for service. Service Update Bulletins are to be completed when the customer is in for a regularly scheduled visit.

GM bulletins are intended for use by professional technicians, NOT a "do-it-yourselfer". They are written to inform these technicians of conditions that may occur on some vehicles, or to provide information that could assist in the proper service of a vehicle. Properly trained technicians have the tools, equipment, safety instructions, and know-how to do a job properly and safely. If a condition is described, DO NOT assume that the bulletin applies to your vehicle, or that your vehicle will have that condition. See your dealer for information on whether your vehicle may benefit from the information.



**We Support
Voluntary Technician
Certification**