

ATTENTION:

- GENERAL MANAGER
- PARTS MANAGER
- CLAIMS PERSONNEL
- SERVICE MANAGER

IMPORTANT - All Service Personnel Should Read and Initial in the boxes provided, right.

© 2020 Subaru of America, Inc. All rights reserved.



QUALITY DRIVEN® SERVICE

SERVICE BULLETIN

APPLICABILITY: 2020-22MY Outback & Legacy
 2022-25MY BRZ
 2022-23MY WRX

NUMBER: 15-270-20R
DATE: 8/19/2020
REVISED: 10/10/25

SUBJECT: FOTA (Firmware Over-The-Air) Reprogramming for DENSO Gen 4 Audio / Navigation Infotainment Systems

INTRODUCTION:

This bulletin provides instruction for use of a new reprogramming procedure to optimize the Denso Gen 4 Audio and Navigation system utilized in the models listed above. Firmware-over-the-air (FOTA) is a process where remote devices can receive updates to their operating firmware. This process has become second nature with smartphones, tablets and many other connected devices. FOTA for automotive infotainment systems was designed with an emphasis on customer convenience. FOTA updates provide regular enhancements along with software patches as needed to enhance the customer experience. The convenience factor comes not only with the supply of regular updates and the enhancements they provide, but through customer control of when these updates are downloaded and installed. The only requirement is a secure Wi-Fi connection through a home network or the use of a secure Wi-Fi hotspot to create a connection to the update server. Once connected, customers can easily obtain and install any available FOTA update to their infotainment system. FOTA operation is conducted in two steps: download (from the server to the vehicle via Wi-Fi) and installation (internal to CP1 system in the vehicle). This bulletin will focus on FOTA for Denso Gen 4 audio systems (MID) and audio-navigation systems (HIGH) which utilize the 11.6-inch touch-screen display. Models with 7-inch dual screen display (Base) are not FOTA capable.

This bulletin outlines the procedure for performing FOTA updates successfully. These procedures involve:

- Assisting customers with FOTA -related concerns if they have been unsuccessful in performing the FOTA by themselves. (Possible vehicle or system concern.) *
- Performing the FOTA update for customers who are not comfortable or need assistance with performing it themselves but have requested the Retailer install it*
- Updating the firmware using a USB flash drive by following the steps outlined in TSB 15-261-20R “Reprogramming File Availability for Optimization of Gen 4 Denso CP1 Infotainment Systems” when FOTA cannot be performed due to the setup difficulties*.

CAUTION: VEHICLE SERVICING PERFORMED BY UNTRAINED PERSONS COULD RESULT IN SERIOUS INJURY TO THOSE PERSONS OR TO OTHERS.

Subaru Service Bulletins are intended for use by professional technicians ONLY. They are written to inform those technicians of conditions that may occur in some vehicles, or to provide information that could assist in the proper servicing of the vehicle. Properly trained technicians have the equipment, tools, safety instructions, and know-how to do the job correctly and safely. If a condition is described, DO NOT assume that this Service Bulletin applies to your vehicle, or that your vehicle will have that condition.

Subaru of America, Inc. is ISO 14001 Compliant

ISO 14001 is the international standard for excellence in Environmental Management Systems. Please recycle or dispose of automotive products in a manner that is friendly to our environment and in accordance with all local, state and federal laws and regulations.

Continued...

* **NOTE:** If a customer is simply requesting help with how to perform FOTA, NEVER share a copy of this bulletin. Instead, provide a copy of the appropriate customer instructions for FOTA available on Subarunet: Service Operations & Technical > Forms/Downloads page. See **Appendix A** later in this bulletin for more information.

It is **VERY IMPORTANT** to read and understand this information completely **before** proceeding.

NOTES:

- **REMINDER:** FOTA is available for MID and HIGH (Navi) systems with 11.6-inch display only.
- The currently available FOTA firmware version is not the same version available to Retailers for USB updating use. However, a system updated using FOTA can be further updated by using the USB update procedure. For additional details clarifying the scope of FOTA updates, review the 20MY Legacy/Outback Owner’s Manual Supplement’s additional information for the Center Information Display. The information is also be downloadable from: <https://www.subaru.com/owners/index.html> See **Appendix B** below for more information.
- FOTA updates are for the system firmware ONLY. Map updates are a separate function which the customer may update on their own by using either USB download or Map Over the Air Update (MOTA). Go to: subaru-maps.com for more information.

Reference photos of each system faceplate are supplied below:



SERVICE PROCEDURE / INFORMATION:

REMINDER: Customer satisfaction and retention starts with performing quality repairs.

The FOTA update process involves downloading and installing the update firmware therefore, time duration depends on signal strength and transfer rate performance. During installation, the infotainment system’s functionality will be restricted.

Continued...

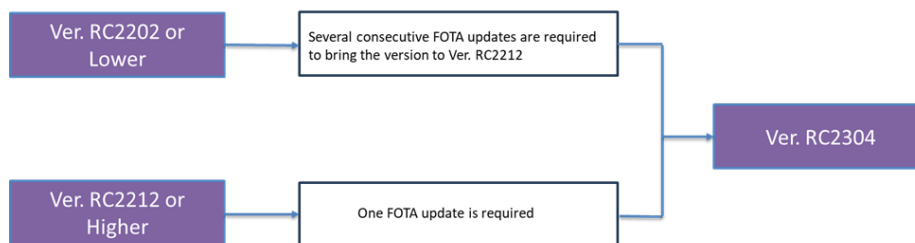
Set-Up Instructions and CAUTIONS:

- Move the vehicle to an outside location where the engine can be safely started and kept idling during the update process.
- Never idle the vehicle in a closed space such as a garage, even if the garage door is kept open.
- Once the vehicle is in a safe location, be sure the vehicle is in Park (CVT) or Neutral (MT) and the parking brake is fully engaged.
- Open one or more windows to ensure fresh air is available.
- **Stay with the vehicle** until the update is completed.
- We suggest adjusting the climate controls to your desired settings in case they become unavailable during the update process.
- Unplug any devices, chargers, cables or other USB drives from the vehicle's USB and power ports.

VERY IMPORTANT: Before proceeding with the updating procedure, the currently installed version ID **MUST** be confirmed (Firmware Version Check) by following the steps below:

For vehicles on software versions prior to Ver. RC2212 (i.e., RC2202 or lower), achieving a final target version of RC2304 via FOTA may require an additional FOTA software update. Due to limitations in the RC2304 FOTA's upgrade path, two or more consecutive FOTA updates will be prompted.

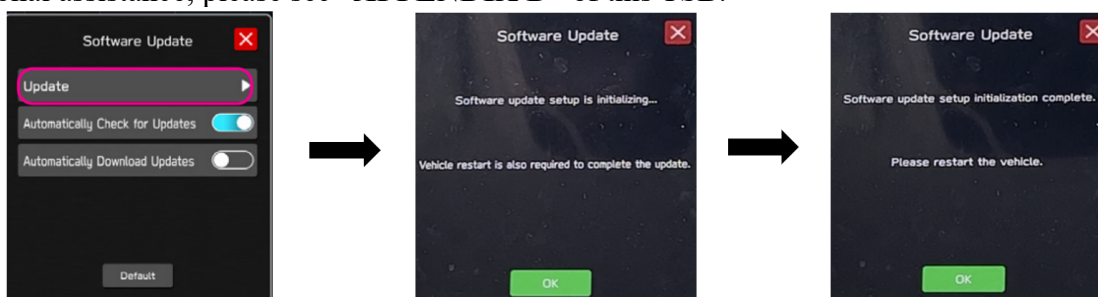
- The first FOTA update will bring the vehicle software to a compatible intermediate version RC2202/lower and RC2212 (likely RC2202 or RC2208).
- Upon completion of the first FOTA, the system will automatically prompt for the next FOTA (leading to version RC2403) during the next ignition cycle (engine -off to -on transition).



Please reference Software Version Table below for additional information.

Also please find all applicable data pertaining to software version numbers and conventions in **Appendix E**

Please take note: If you are required to perform another FOTA update as outlined above, the following pop-up will appear if the Second FOTA is Performed after the first step FOTA . For additional assistance, please see “**APPENDIX D**” of this TSB.



Continued...

1) After starting the engine and system boot-up completes, from the HOME screen, touch the Settings button.



2) Press the **General** button. Use the down arrow to scroll to **System Information** then press to display the System Information / Version information.



Please note the last six digits of the software version (XXX-XXX) would determine an eligibility for the software update. If the last six digits of the software version are not listed in the table below for an applicable carline/model year combination proceed to **STEP 2** below. Otherwise the unit already has the latest software version installed. No update is required at this time.

Continued...

Carline	Model Year	FOTA Update Available Software Version
Outback/Legacy	2020	162-370
		162-570
		162-670
		162-770
		162-870
		162-970
	2021	163-070
		160-970
		161-170
		161-270
		161-370
		161-470
	2022	161-570
		161-670
		160-770
		160-870
		160-970
		161-070
		161-170
		161-270
		161-370
		161-470
		161-570

Carline	Model Year	FOTA Update Available Software Version
WRX	2022-2023	161-770 161-970 162-070 162-170 162-270

Carline	Model Year	FOTA Update Available Software Version
BRZ	2022	161-770
		161-870
	2023-2024	162-070
		162-170
		162-270
		162-370
		160-570
	2025	160-670
		160-770
		160-870
		040-370

If the vehicle is eligible to FOTA software update based on the software version, please follow the steps outlined in the section “**FOTA REPROGRAMMING PROCEDURE**”. If the software version is up to date please proceed to the WARRANTY / CLAIM INFORMATION section of the TSB and process a claim for Version Check Only.

Continued...

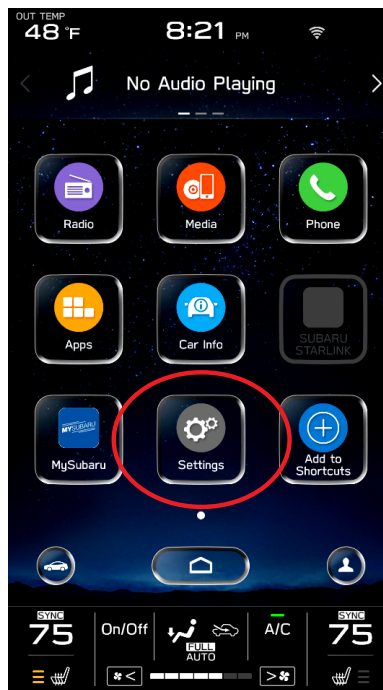
FOTA REPROGRAMMING PROCEDURE

Step 1- Connect the vehicle Subaru to an active, secure Wi-Fi connection:

- You can use one of two Wi-Fi sources:
 - The retailer's secure Wi-Fi (if it reaches the vehicle)
 - A cellphone's Wi-Fi hotspot (if the phone and data plan are capable).

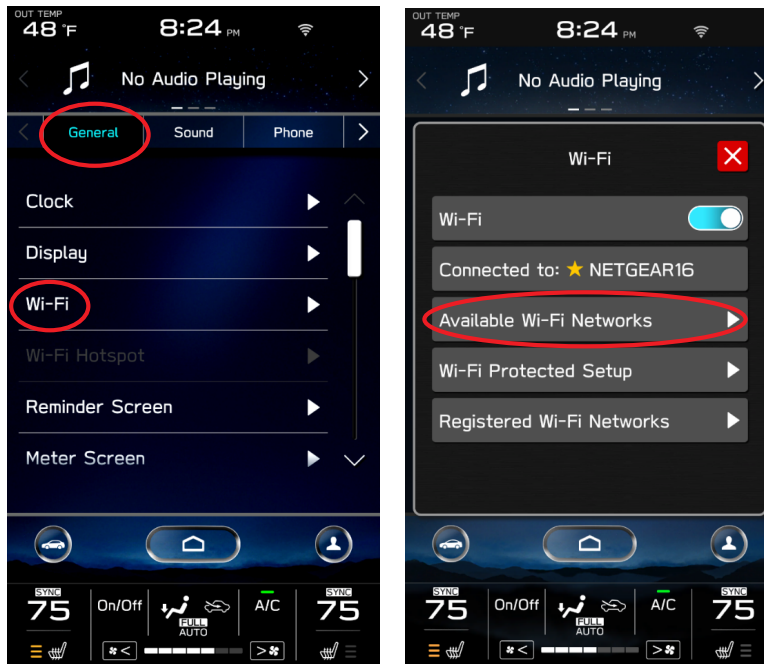
NOTE: This update uses at least 100MB of data so, choose a Wi-Fi connection with no data restrictions. Wi-Fi connections requiring acceptance or login to a web page (such as a coffee shop or hotel) cannot be used.

- To connect to the preferred Wi-Fi source, follow these steps:
 - Go to **Settings** on vehicle display screen.



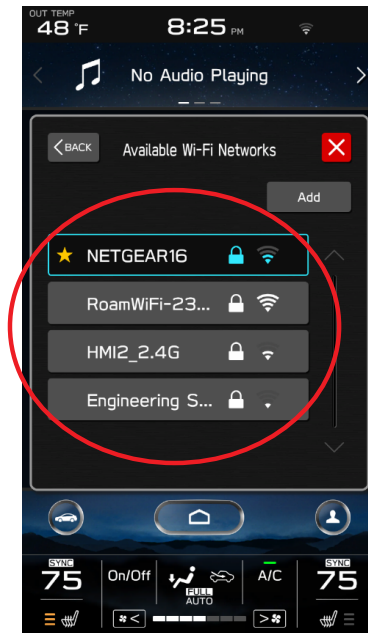
- Select **General**.
- Select **Wi-Fi**.
- Ensure Wi-Fi is turned on and then select **Available Wi-Fi Networks**.

Continued...



5. Select the Wi-Fi network of choice (and enter the password if required).

NOTE: Take note of the Wi-Fi signal strength in the top right corner of the screen. If only 1-2 bars are displayed with the selected network, download speeds will likely be slow. Choose a stronger network if possible or move the vehicle closer to the Wi-Fi source.



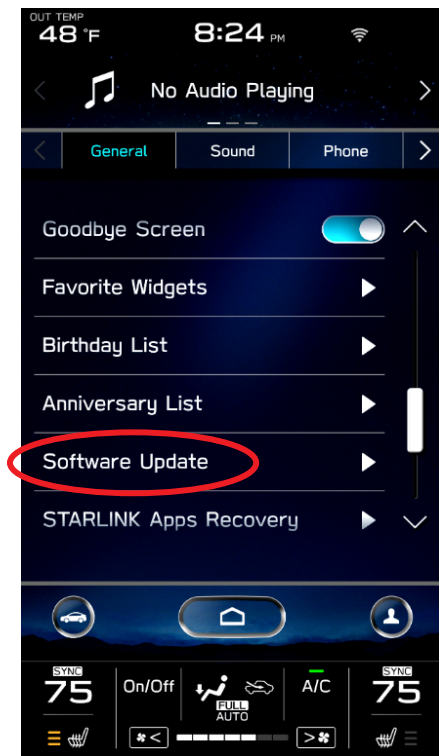
NOTE: See **Appendix C** for troubleshooting tips in case an error is displayed.

STEP 2– DOWNLOADING AND INSTALLING UPDATES

1. Next, update the STARLINK system.
2. Go back to the **General** screen under **Settings**,

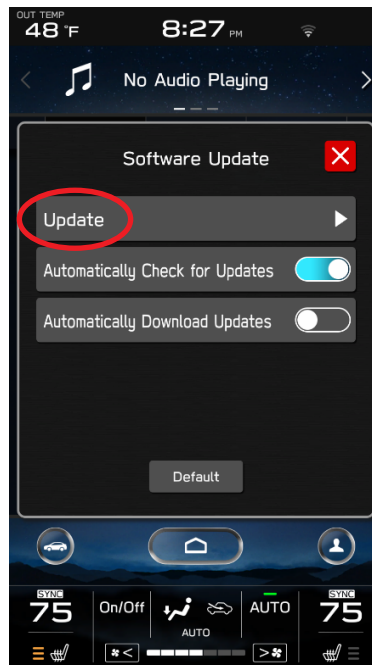
Continued...

3. Scroll down and select **Software Update**.



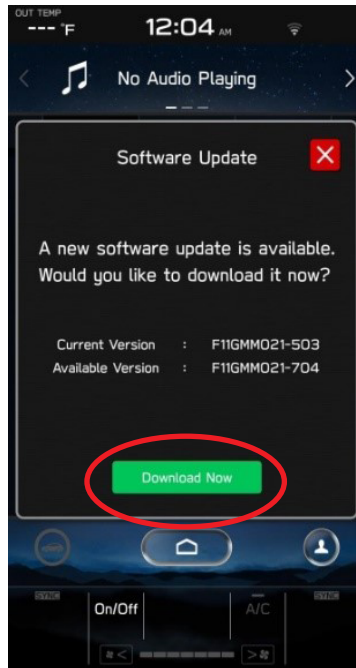
NOTE: At this point, the user can choose to enable “**Automatically Check for Updates**” and “**Automatically Download Updates**” so in the future, the vehicle will advise the customer when an update is available.

4. For this update procedure, select **Update**.



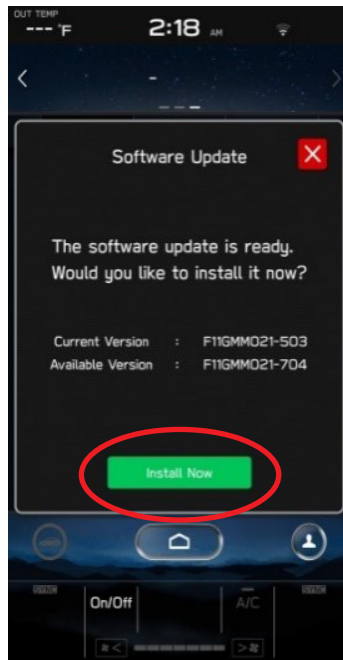
5. If an update is available, select **Download Now**.

Continued...



Once the download is complete, **it is recommended to adjust the climate controls to the desired settings** in case they become unavailable during the update process.

6. When ready, select **Install Now**.

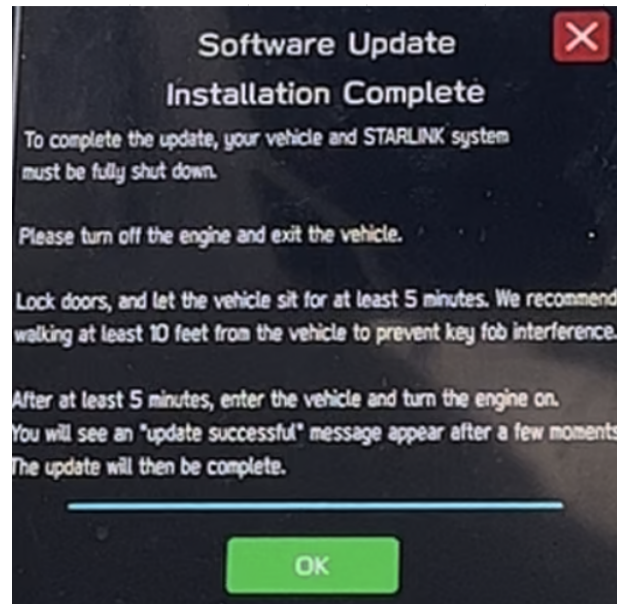


7. The install process can take up to 40 minutes.

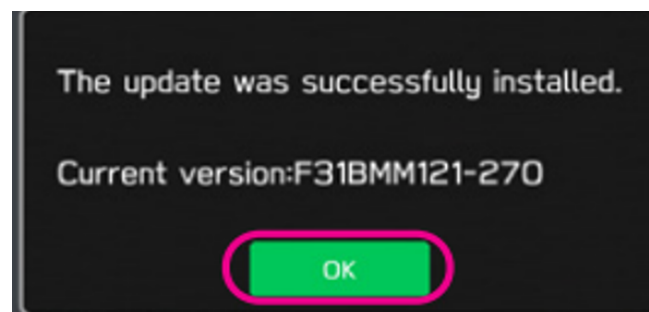
If the display screen goes blank during the installation process, leave the vehicle on, and allow the system to restart. After up to two minutes, you will receive the message: “The software update is ready. Would you like to install it now?”. Press OK to continue.

Continued...

IMPORTANT: Once complete, the below pop up will be displayed. Press OK then, switch the vehicle OFF, exit the vehicle, lock all doors including the rear gate (if equipped) and **move the key fob away from the vehicle at least 10 feet to enable affected systems to go to sleep. WAIT AT LEAST 5 MINUTES** before proceeding to 8. below.



8. After 5 minutes, restart the vehicle. A “**software update complete**” message should be displayed signifying the successful update is now complete. If this message is not displayed, try switch the car OFF again and waiting another 5 minutes before restarting.



9. Switch the engine OFF then open the driver’s door to turn the system off and complete the procedure.

NOTE: See **Appendix C** below for troubleshooting tips if any errors are encountered.

Continued...

WARRANTY / CLAIM INFORMATION:

For vehicles within the Basic New Car Limited Warranty period or covered by an active Subaru Added Security Gold plan, this repair may be submitted using the following claim information:

Labor Description	Labor Operation #	Labor Time	Fail Code
DENSO CP1 VERSION CHECK ONLY	A031-178	0.2h	ZTZ-48
VERSION CHECK & CP1 REPROGRAMMING VIA USB	A832-286	0.6h	

BRZ			
Labor Description	Labor Operation #	Labor Time	Fail Code
DENSO CP1 VERSION CHECK ONLY	A031-178	0.2h	ZTZ-48
VERSION CHECK & CP1 LITE REPROGRAMMING USB	A832-386	0.5h	

REMINDER: The new Software Version number must be entered when prompted at claim entry.

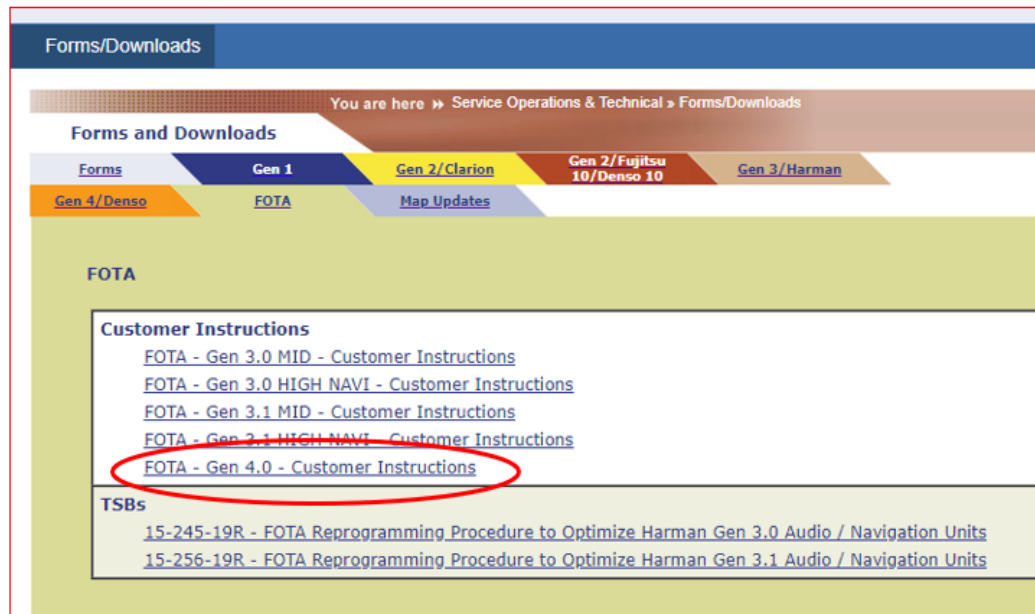
IMPORTANT REMINDERS:

- SOA strongly discourages the printing and/or local storage of service information as previously released information and electronic publications may be updated at any time.
- Always check for any open recalls or campaigns anytime a vehicle is in for servicing.
- Always refer to STIS for the latest service information before performing any repairs.

Continued...

Appendix A

Links to Customer self-install instructions for FOTA Customer Instructions will be added to the Subarunet Service Operations & Technical > Forms/Downloads page when they become available. Once the links are available and to enhance customer satisfaction, consider providing customers with a copy of the appropriate instructions for their specific system along with access to the retailer's secure customer Wi-Fi network. Doing so will enable customers to try performing the FOTA update on their own while at the retailer.



REMINDER: Retailers performing these updates are to follow the Service Procedures outlined in this bulletin ONLY. Always follow the applicable service procedures as outlined in this and other Service Bulletins. The additional steps and requirements supplied in Service Bulletins support a Subaru Technician's proper diagnosis and repair of any customer concern.

Continued...

Appendix B

The currently available FOTA software version is not the same version available to Retailers for USB updating use. However, the system which has been updated via the FOTA can be further updated using USB update. Update the firmware using a USB flash drive by following the steps outlined in the TSB applicable to the carline: TSB 15-261-20R “Reprogramming File Availability for Optimization of Gen 4 Denso CP1 Infotainment Systems” for 20-22MY Outback/Legacy or TSB 15-301-22R “Reprogramming File Availability for Optimization of Gen 4 Denso CP1 Infotainment Systems” for 22-23MY WRX or TSB 15-297-22R “Reprogramming File Availability for Optimization of Gen 4 Denso CP1 Infotainment Systems” for 22-25MY BRZ.

See Appendix E in TSB 15-261-20R or TSB 15-301-22R or TSB 15-297-22R as applicable for the list of improvements for the software version update.

Continued...

Appendix C

TROUBLESHOOTING:

1. What if a secure Wi-Fi connection cannot be established?

Tips:

- a. Go back to **Step 1** instructions in this document and confirm correct information is being used for the following items:
 - i. Wi-Fi device name (SSID)
 - ii. Wi-Fi password
- b. Confirm user has not reached the maximum allowance for the number of connected devices
- c. Confirm Wi-Fi signal is strong
- d. Confirm other devices can be connected to the Wi-Fi network being used.

2. If you receive one of the following two messages during the update process:



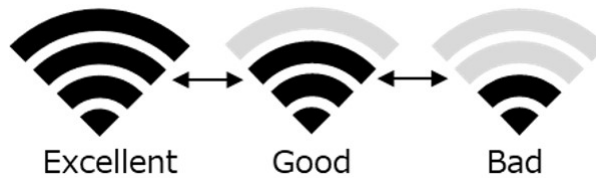
Tips:

- a. Check the internet connection to ensure it is active and shows full signal strength.
 - i. Select General tab under “Setting” screen and change the “Wi-Fi” to Off once then turn it back to On again.

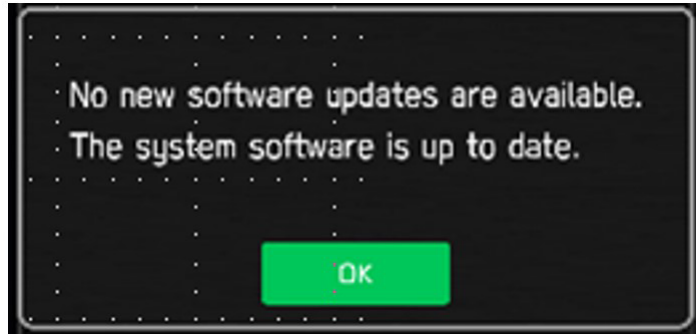


Continued...

- b. Try moving the vehicle closer to the WiFi source or if not possible, try a different WiFi connection such as a mobile hotspot.

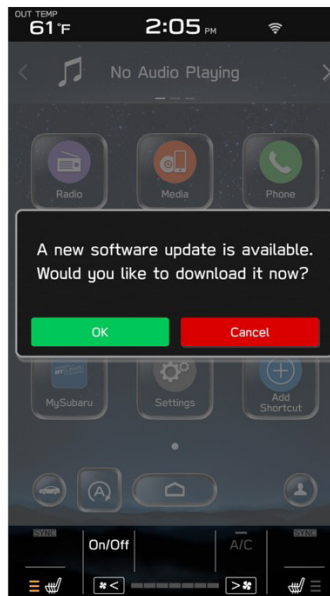


3. If the system says I'm up to date when checking for updates:



Tips:

- a. If current software version is the latest, you don't need an update and no action is necessary.
- b. If the software version is not the latest, you are likely not eligible for FOTA update at this time. Please proceed with USB update following TSB 15-261-20.
4. If the "OK" button does not respond when I begin the update process:

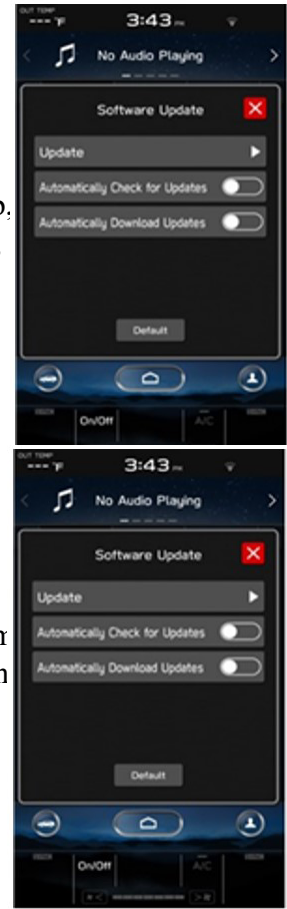


Continued...

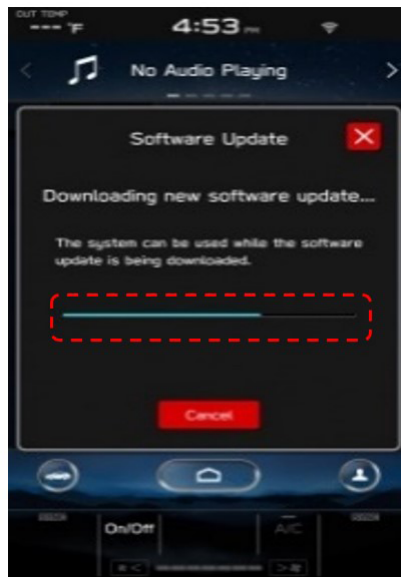
Tips:

- a. If CarPlay application is running at the time the pop-up screen comes up, disabled for OK operation. Please press the home button on the display, Software Updates, Update, and begin again.

- b. If this version is not shown, ensure the clock time is correct. b) The same for other cases. Please press the home button on the display, go to Settings Update, and begin again.



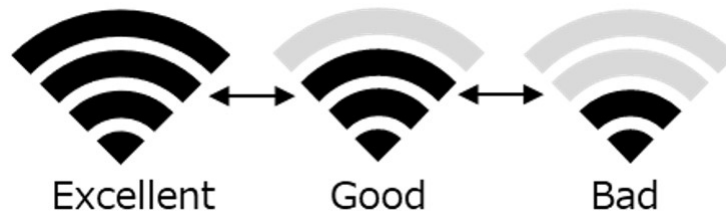
- 5. If the “progress bar” does not progress after selecting “Download” or, if you receive a “Connect to Wi-Fi” popup while downloading:



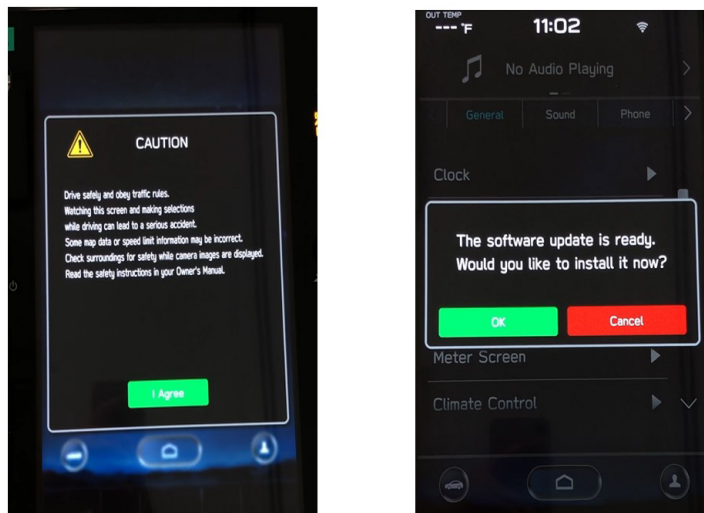
Continued...

Tips:

- a. Check your internet connection to ensure its active and shows full bars of connectivity.
- b. Try moving the vehicle closer to the Wi-Fi source. If that is not possible, try a different Wi-Fi connection such as a phone hotspot.



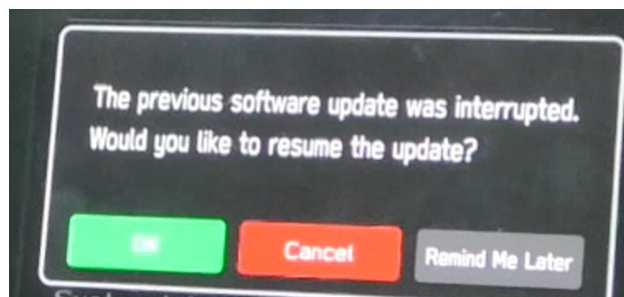
6. If you encounter a blank screen and the update restarts during the installation process:



Tips:

- a. If the display screen goes blank during the installation process, leave the vehicle on and allow the system to restart. After up to two minutes, you will receive the message: “The software update is ready. Would you like to install it now?”. Press OK to continue.

7. If you receive the following message during the update:



Tips:

- a. The above message will display if the vehicle is turned off during the software update process. Select “OK” to resume the process.

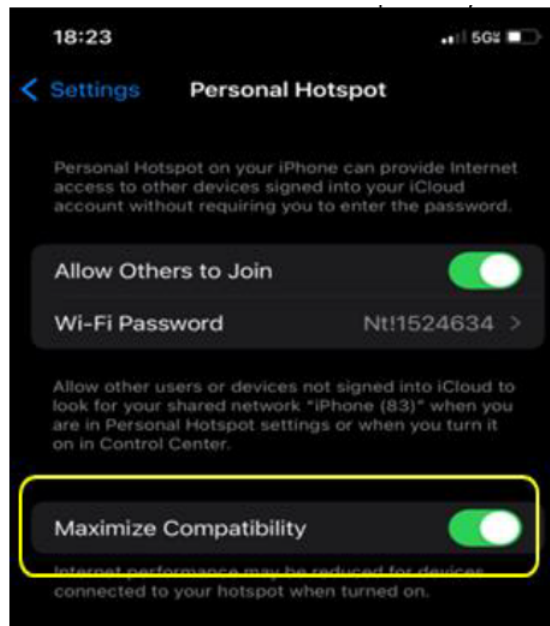
8. CP1 connectivity issues observed when tethered via iPhone hotspot (Phone as Modem/ Wi-Fi Hotspot).

iPhone hotspot, particularly in iPhone 12 and later models, prioritizes 5 GHz Wi-Fi connections, while CP1 is designed for 2.4 GHz networks. This mismatch can lead to connectivity problems.

Resolution:

1. iPhone Settings: Advise the customer to adjust their iPhone hotspot settings as follows:

- Navigate to Settings > Personal Hotspot.
- Enable Maximize Compatibility.



2. Frequency Confirmation: Verify the connected network on the CP1. Ensure it's operating on the 2.4 GHz band. If not, manually select the 2.4 GHz network option on the CP1, if available.

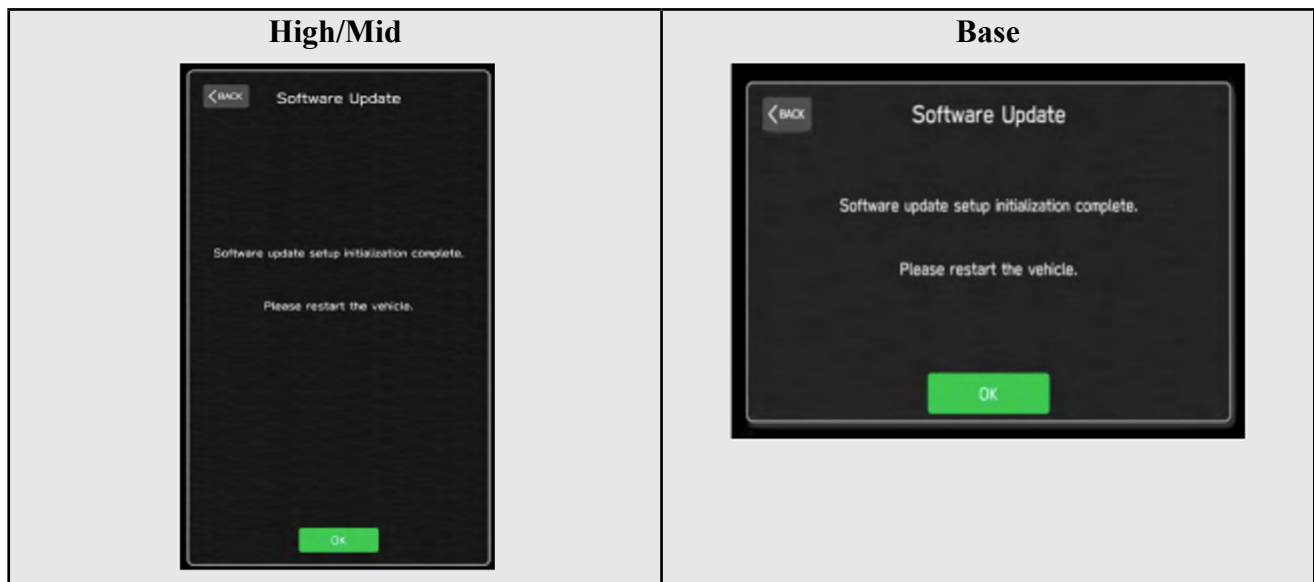
Continued...

Appendix D

Follow this procedure in the RARE case of “Software update setup is initializing...” message is displayed: • If the screen shown below appears, WAIT for approximately 30 minutes or as long as necessary (waiting for longer than 60 minutes might indicate system malfunction).



The screens shown below will be displayed when the process completes.



1. Turn the ignition OFF, open the driver's door, close the driver's door and **WAIT** for 3 or more minutes before proceeding further.
2. Open the driver's door again and either turn the ignition ON (if a charger is connected) or start the engine.
3. Please proceed with USB Update following TSB 15-261-20.

IMPORTANT NOTE: If this procedure is required, contact Techline as additional action may be necessary

Continued...

Appendix E

Denso Gen 4 Software Update Chronology

Denso Gen 4 Software Update Chronology 20-22MY Outback/Legacy (per TSB Number: 15-261-20)

Update #	Model Year:	Version	Release Date:	NEW Software Version ID #:
0	2020	0	9/1/2019	F11GHM020-501/502 (High model software) F11GMM020-501/502 (Mid model software) F11GBM020-501/502 (Base model software)
1	2020	RC1912	2/24/2020	F11GHM020-503 (High model software) F11GMM020-503 (Mid model software) F11GBM020-503 (Base model software)
2	2020	RC2003	6/24/2020	F11GHM020-504 (High model software) F11GMM020-504 (Mid model software) F11GBM020-504 (Base model software)
3	2020	RC2011	12/14/2020	F11GHM042-380 (High model software) F11GMM042-380 (Mid model software) F11GBM032-280 (Base model software)
	2021	RC2011	12/14/2020	F31BHM040-980 (High model software) F31BMM040-980 (Mid model software) F31BBM030-880 (Base model software)
4	2020	RC2105	10/15/2021	F11GHM072-582 (High model software) F11GMM072-582 (Mid model software) F11GBM072-582 (Base model software)
	2021	RC2105	10/15/2021	F31BHM071-182 (High model software) F31BMM071-182 (Mid model software) F31BBM071-182 (Base model software)
	2022	RC2105	10/15/2021	FB1SHM070-882 (High model software) FB1SMM070-882 (Mid model software) FB1SBM070-882 (Base model software)
	2022 Wilderness	RC2105	10/15/2021	F51XHM071-082 (High model software) F51XMM071-082 (Mid model software)

Continued...

Denso Gen 4 Software Update Chronology 20-22MY Outback/Legacy (per TSB Number: 15-261-20)

Update #	Model Year:	Version	Release Date:	NEW Software Version ID #:
5	2020	RC2111	1/28/2022	F11GHM112-680 (High model software) F11GMM112-680 (Mid model software) F11GBM112-680 (Base model software)
	2021	RC2111	1/28/2022	F31BHM111-280 (High model software) F31BMM111-280 (Mid model software) F31BBM111-280 (Base model software)
	2022	RC2111	1/28/2022	FB1SHM110-980 (High model software) FB1SMM110-980 (Mid model software) FB1SBM110-980 (Base model software)
	2022 Wilderness	RC2111	1/28/2022	F51XHM111-180 (High model software) F51XMM111-180 (Mid model software)
6	2020	RC2202	4/22/2022	F11GHM122-780 (High model software) F11GMM122-780 (Mid model software) F11GBM122-780 (Base model software) F51XMM120-970 (MID FOTA SOFTWARE) F51XMM121-070 (MID FOTA SOFTWARE) F51XMM121-170 (MID FOTA SOFTWARE) F51XHM120-970 (HIGH FOTA SOFTWARE) F51XHM121-070 (HIGH FOTA SOFTWARE) F51XHM121-170 (HIGH FOTA SOFTWARE)
	2021	RC2202	4/22/2022	F31BHM121-380 (High model software) F31BMM121-380 (Mid model software) F31BBM121-380 (Base model software) F51XMM120-970 (MID FOTA SOFTWARE) F51XMM121-070 (MID FOTA SOFTWARE) F51XMM121-170 (MID FOTA SOFTWARE) F51XHM120-970 (HIGH FOTA SOFTWARE) F51XHM121-070 (HIGH FOTA SOFTWARE) F51XHM121-170 (HIGH FOTA SOFTWARE)
	2022	RC2202	4/22/2022	FB1SHM121-080 (High model software) FB1SMM121-080 (Mid model software) FB1SBM121-080 (Base model software) F51XMM120-970 (MID FOTA SOFTWARE) F51XMM121-070 (MID FOTA SOFTWARE) F51XMM121-170 (MID FOTA SOFTWARE) F51XHM120-970 (HIGH FOTA SOFTWARE) F51XHM121-070 (HIGH FOTA SOFTWARE) F51XHM121-170 (HIGH FOTA SOFTWARE)
	2022 Wilderness	RC2202	4/22/2022	F51XHM121-280 (High model software) F51XMM121-280 (Mid model software) F51XMM120-970 (MID FOTA SOFTWARE) F51XMM121-070 (MID FOTA SOFTWARE) F51XMM121-170 (MID FOTA SOFTWARE) F51XHM120-970 (HIGH FOTA SOFTWARE) F51XHM121-070 (HIGH FOTA SOFTWARE) F51XHM121-170 (HIGH FOTA SOFTWARE)

Continued...

Denso Gen 4 Software Update Chronology 20-22MY Outback/Legacy (per TSB Number: 15-261-20)

Update #	Model Year:	Version	Release Date:	NEW Software Version ID #:
7	2020	RC2208	10/28/2022	F11GHM132-880 (High model software) F11GMM132-880 (Mid model software) F11GBM132-880 (Base model software)
	2021	RC2208	10/28/2022	F31BHM131-480 (High model software) F31BMM131-480 (Mid model software) F31BBM131-480 (Base model software)
	2022	RC2208	10/28/2022	FB1SHM131-180 (High model software) FB1SMM131-180 (Mid model software) FB1SBM131-180 (Base model software)
	2022 Wilderness	RC2208	10/28/2022	F51XHM131-380 (High model software) F51XMM131-380 (Mid model software)
8	2020	RC2212	3/10/2023	F11GHM142-980 (High model software) F11GMM142-980 (Mid model software) F11GBM142-980 (Base model software)
	2021	RC2212	3/10/2023	F31BHM141-580 (High model software) F31BMM141-580 (Mid model software) F31BBM141-580 (Base model software)
	2022	RC2212	3/10/2023	FB1SHM141-280 (High model software) FB1SMM141-280 (Mid model software) FB1SBM141-280 (Base model software)
	2022 Wilderness	RC2212	3/10/2023	F51XHM141-480 (High model software) F51XMM141-480 (Mid model software)
9	2020	RC2304	11/10/2023	F11GHM153-080 (High model software) F11GMM153-080 (Mid model software) F11GBM153-080 (Base model software)
	2021	RC2304	11/10/2023	F31BHM151-680 (High model software) F31BMM151-680 (Mid model software) F31BBM151-680 (Base model software)
	2022	RC2304	11/10/2023	FB1SHM151-380 (High model software) FB1SMM151-380 (Mid model software) FB1SBM151-380 (Base model software)
	2022 Wilderness	RC2304	11/10/2023	F51XHM151-580 (High model software) F51XMM151-580 (Mid model software)

Continued...

Denso Gen 4 Software Update Chronology 20-22MY Outback/Legacy (per TSB Number: 15-261-20)

Update #	Model Year:	Version	Release Date:	NEW Software Version ID #:
10	2020	RC2404	10/1/2024	F11GHM163-180 (High model software) F11GMM163-180 (Mid model software) F11GBM163-180 (Base model software)
	2021	RC2404	10/1/2024	F31BHM161-780 (High model software) F31BMM161-780 (Mid model software) F31BBM161-780 (Base model software)
	2022	RC2404	10/1/2024	FB1SHM161-480 (High model software) FB1SMM161-480 (Mid model software) FB1SBM161-480 (Base model software)
	2022 Wilderness	RC2404	10/1/2024	F51XHM161-680 (High model software) F51XMM161-680 (Mid model software)

Denso Gen 4 Software Update Chronology 22-23MY WRX (per TSB Number: 15-301-22)

Update #	Model Year:	Version	Release Date:	NEW Software Version ID #:
0	2022	RC2202	2/1/2022	F21SHM101-780 F21SMM101-780 F21SBM101-780
1	2022	RC2202	8/26/2022	F21SHM121-980 F21SMM121-980 F21SBM121-980
2	2022	RC2208	11/25/2022	F21SHM132-980 F21SMM132-980 F21SBM132-980
3	2022	RC2212	5/19/2022	F21SHM142-180 F21SMM142-180 F21SBM142-180
4	2022	RC2304	3/18/2022	F21SHM152-280 F21SMM152-280 F21SBM152-280
5	2022-2023	RC2404	11/25/24	F21SHM162-380 F21SMM162-380 F21SBM162-380

Continued...

Denso Gen 4 Software Update Chronology 22-23MY BRZ (per TSB Number: 15-297-22)

Update #	Model Year:	Version	Release Date:	NEW Software Version ID #:
0	2022	RC2202	10/1/2021	F41CMM091-781 F41CMM101-880
1	2022	RC2202	6/10/2022	F41CMM122-080
2	2022 2023	RC2208	12/29/2022	F41CMM132-180 FG1CMM130-680
3	2022 2023	RC2212	6/30/2023	F41CMM142-280 FG1CMM140-780
4	2022 2023-2024	RC2304	4/12/2024	F41CMM152-380 FG1CMM150-880
5	2022 2023-2024 2025	RC2404	1/17/2025	F41CMM162-380 FG1CMM160-980 FJ1CMM040-480