



## SIB 77 04 25

SERVICE SOLUTION: Rework MY25 or Newer C 400 GT, C 400 X Top Case  
2025-10-13

## MODEL

Part Number	Part Description	For Model Year 25 or newer
77 43 8 829 760	43.5 Liter Top Case	C 400 GT, C 400 X

The affected top cases are not marked in AIR because AIR uses VIN for tracking and no vin list was issued. In order to determine if a specific top case is affected by this Service Information Bulletin, it is the due diligence of the Dealer to cross reference; previous repair (if the unit is already installed on customer unit), Part Number and Revision Index, before performing any rework.

The following information will address the situation, how to identify the revision index, what repair (if necessary) and if a unit has been repaired by the factory.

## SITUATION

Due to a manufacturing process error, the electrical functions of the 43.5-liter top case (part number 77 43 8 829 760) may not work.

The lighting in the interior of the top case and the USB-C charging option are inoperable. The cause is a faulty pin assignment of the wiring harness connector in the top case.

For top cases that have not yet been delivered (retailer inventory), the top cases must be checked and the service solution completed **prior to delivery to the customer**.

For top cases that have already been delivered to customers, the top cases must be checked and completed upon **customer complaint relating to the specified fault pattern in the lighting and USB-C charging**.

### Where to find the Revision Index:

The affected top cases are identifiable by a Revision Index near the part number sticker inside the top case and on the outside of the top case packaging (cardboard box).

#### Picture on the Left:

Shows an example of inside the top case, the revision index can be found next to the part number on the data matrix code (QR code) sticker the example below being (02 revision index).

#### Picture on the Right:

Shows the example on the product packaging. The revision index can be found on the part number sticker below the bar code the example being (02 revision index).



### How to determine the work to perform (if necessary) based on the Revision Index:

Check for the Revision Index (in either location) only one location is required for knowing the revision index.

If a top case has a revision index of **01, 02, or 03**, you need to check for a clearly visible **green dot** on the sticker location as seen in the figure on the right above.

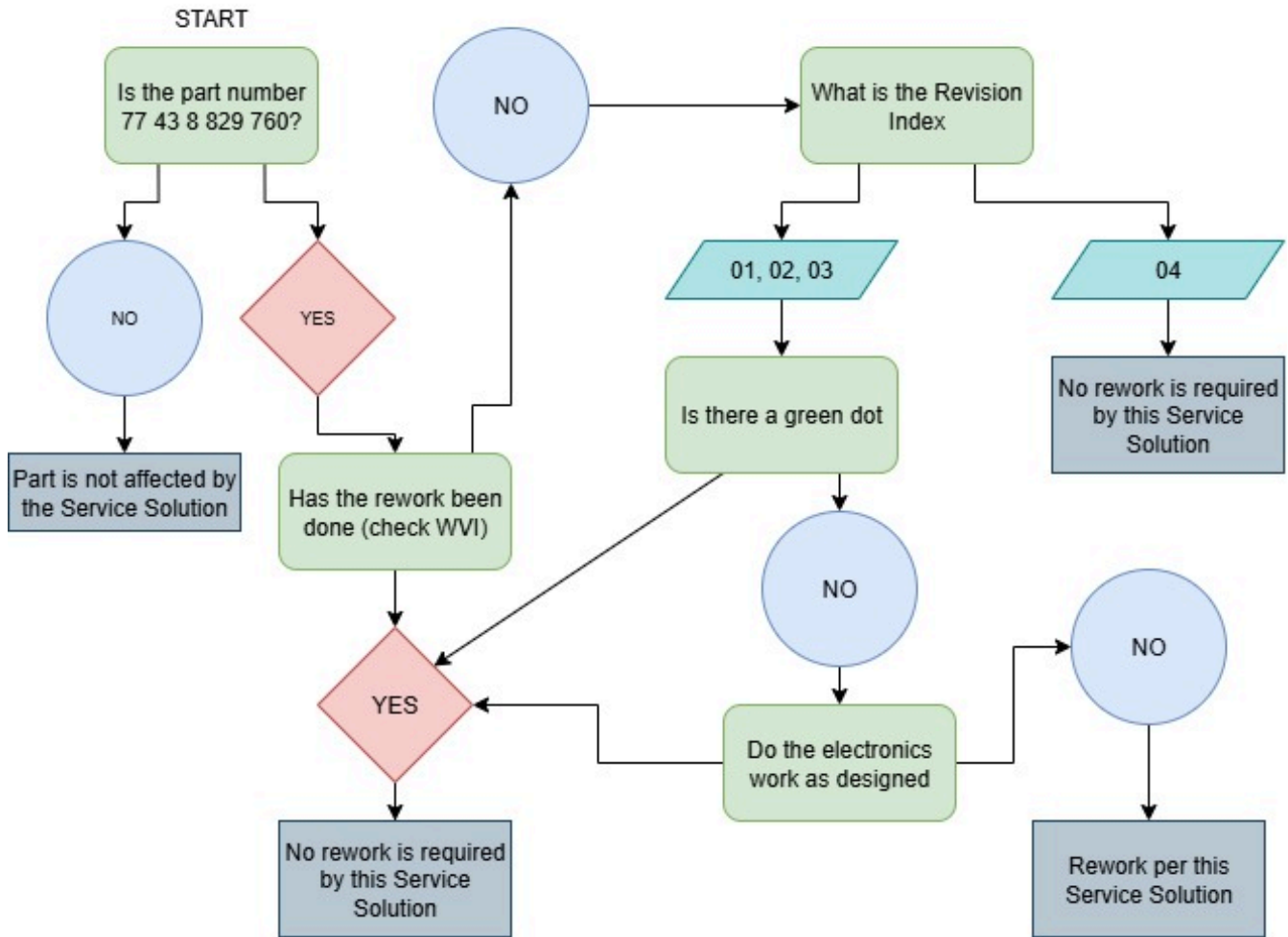
NOTE: The **green dot** indicates the top case was reworked at the factory and does not need any rework performed in this SIB and the dealer can disregard this service solution.

If you have a top case with a Revision Index of **01, 02, or 03 without** a green dot then the dealer must check that the electronics are operating as designed by performing a function check before handing them over to the customer. When installed in the vehicle, the lighting must be active with the ignition switched selected to “on” and a USB load such as a smartphone or tablet must charge at the USB-C charging port.

If the functional check is unsuccessful, the service solution must be carried out.

For top cases with the Revision Index of **04** with or without a green dot the case is correct and does not need any rework per this Service Solution.

### Visual Diagram for Clarification:



**PROCEDURE**

For affected top cases, the pin re-assignment must be carried out per repair instructions "00 61 004 – Reworking wiring harness in top case", provided that the special tools 83 30 0 495 406 and 83 30 0 495 404 are available.

If the special tools are not available, complete the service solution per repair manual "46 54 046 – Replacing wiring harness in top case".

Note: Special tools required to perform work on a Service Solution are not reimbursable.

**PARTS INFORMATION**

Obtain and confirm the part numbers for your specific vehicle by entering the chassis number in ETK which takes into account specific equipment and/or options.

Additional parts like gaskets, hardware, and chemicals may be required for the complete repair.

**Part Number (Only for repair instructions 46 54 046 – replace the wiring harness in the top case)**

61 12 5 B51 1B6	Top case connecting cable
-----------------	---------------------------

**CLAIM INFORMATION**

Please submit claims via the normal claim process using the information below:

**Defect code**

77 43 00 01 00	Reworking top case (43 5 1)
----------------	-----------------------------

**Labor Operation**

00 60 426	Technical campaign standard 4	6 FRU
+00 60 927	Technical campaign standard 4	5 FRU

FRUs includes all repair procedures to complete the task with allowance for necessary ancillary tasks (e.g., visual inspection, lubrication, cleaning parts etc.) and administrative tasks.

Labor operation code 00 60 426 is a Main labor operation. If you are using a Main labor code for another repair, use the Plus code labor operation instead.

**QUESTIONS REGARDING THIS BULLETIN**

Technical inquiries	Contact the BMW Technical Support Group via TSARA
Warranty inquiries	Submit an IDS ticket to the Warranty Department
Parts inquiries	Submit an IDS ticket to the Motorrad Parts Department

Powered by [Froala Editor](#)

**Supporting Materials**

[picture\\_as\\_pdf 77 04 25 - SESO - Reworking Top Case.pdf](#)

[picture\\_as\\_pdf RM\\_0061004\\_0S01\\_EN\(1\).pdf](#)

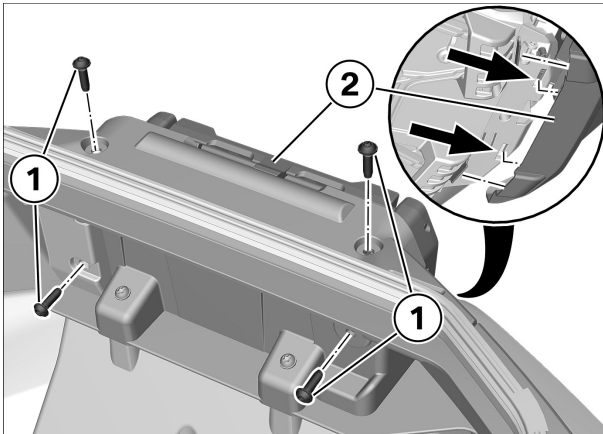
[picture\\_as\\_pdf RM\\_4654046\\_0S10\\_EN\(1\).pdf](#)



## OS01 - C 400 GT

### 00 61 004 Reworking wiring harness in topcase

# 1

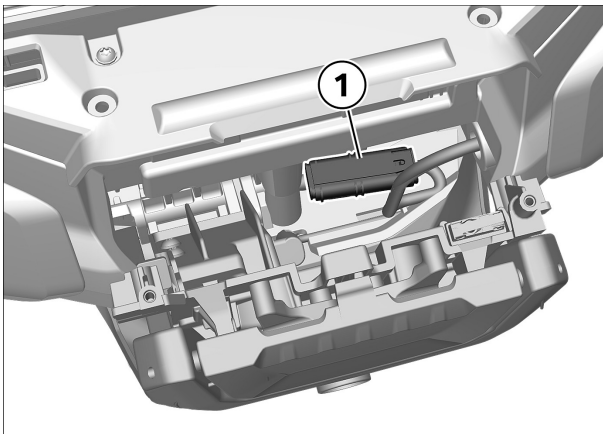


#### ► Detach topcase locking unit

- Open the topcase.
- Remove screws **(1)**.
- Carefully detach locking unit **(2)** from base plate.  
Pry apart at lugs **((arrows))**.  
Do not pull on cable or connector!

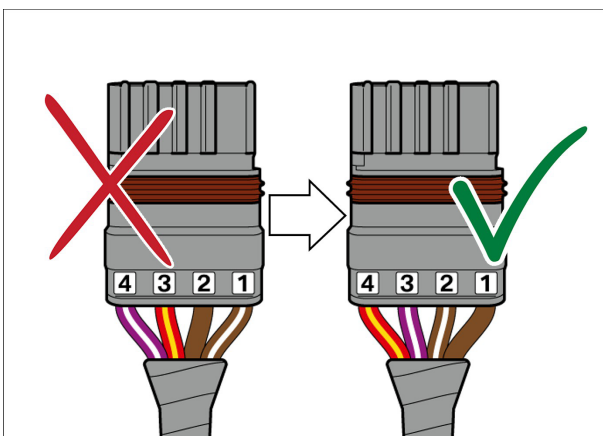


# 2



#### ► Disconnecting wiring harness in topcase and correcting pin assignment on connector

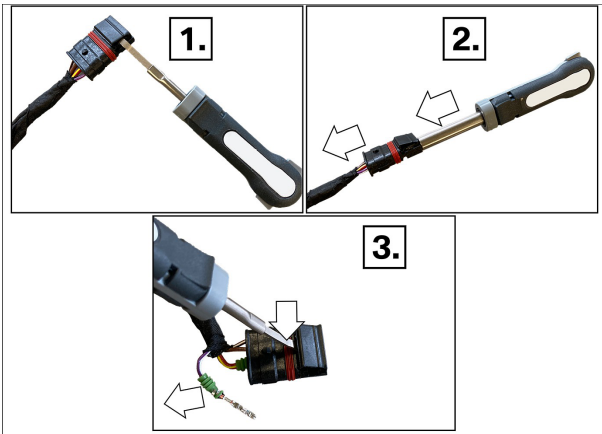
- Disconnect connector **(1)**.



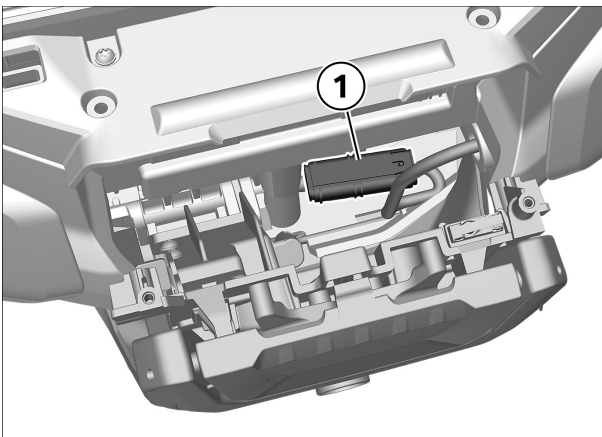
- Correct pin assignment in connector housing according to the figure.

#### • **Correct** assignment:

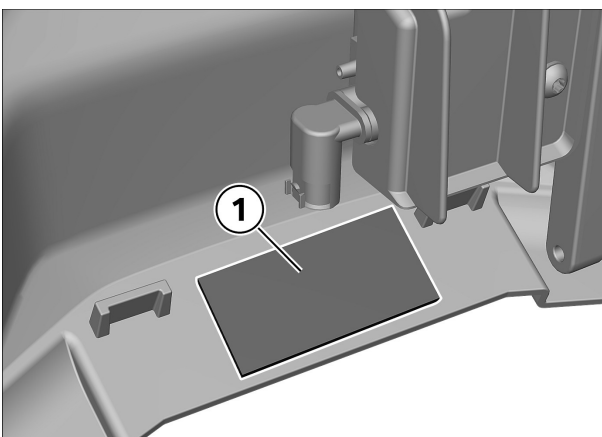
- 4 - red/yellow
- 3 - purple/white
- 2 - brown/white
- 1 - brown



- Unpin each pin from the connector side using tool 83 30 0 495 **404** and 83 30 0 495 **406**:  
Lift connector flap using 0 495 406 (**do not fold up completely**).  
Push pin backwards using 0 495 404, **gently pull cable up to first detent**.  
Press pin down from above using 0 495 406 and release it from **second detent**.  
Remove pin completely from connector housing.  
Remove remaining pins from connector housing in the same way.
- Insert pins into the correct receptacle, pins must lock in connector housing.  
Green seal must be slightly inserted in the connector housing.
- Close the connector flap.
- Reconnect connector **(1)**.

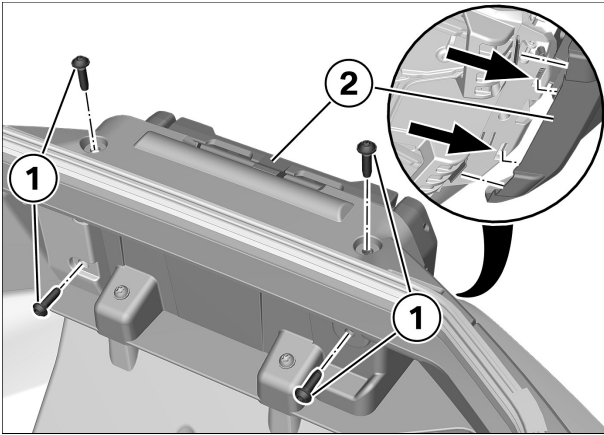


**3**



► **Attaching topcase locking unit**

- Renew adhesive tape **(1)** if damaged.  
Rattle prevention: use standard, double-sided adhesive tape (cut to size as required).



- Attach locking unit **(2)** to base plate.  
Engage hooks **((arrows))**.
- Install screws **(1)**.  
2.4 x 14



## 4

### ► Functional check of topcase electrics

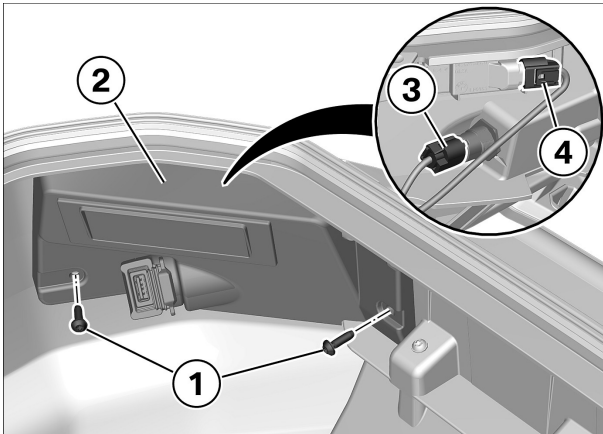
- Mount topcase on vehicle.
- Perform functional check:
  - Ignition on
  - Interior lamp must light up
  - Socket must charge connected smartphone or similar



## OS01 - C 400 GT

### 46 54 046 Replacing wiring harness in topcase

# 1

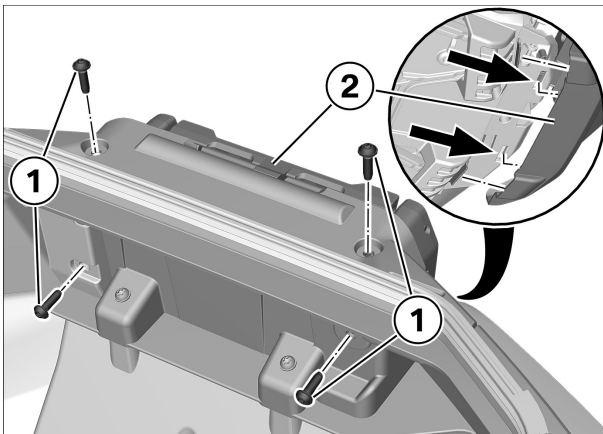


#### ► Removing cover for topcase socket

- Open the topcase.
- Remove screws **(1)** and detach cover **(2)**.
- Disconnect connector for socket **(3)** and interior light **(4)**, remove cover **(2)**.



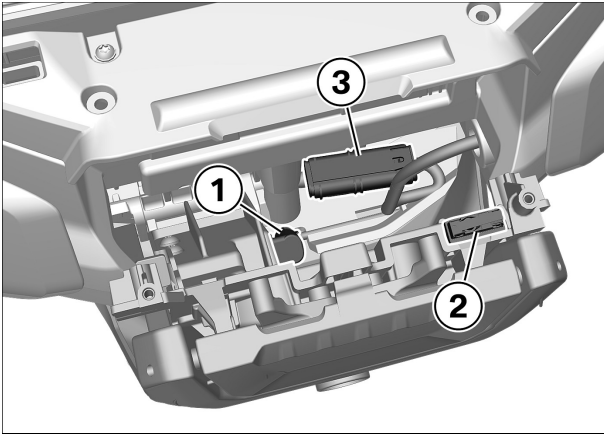
# 2



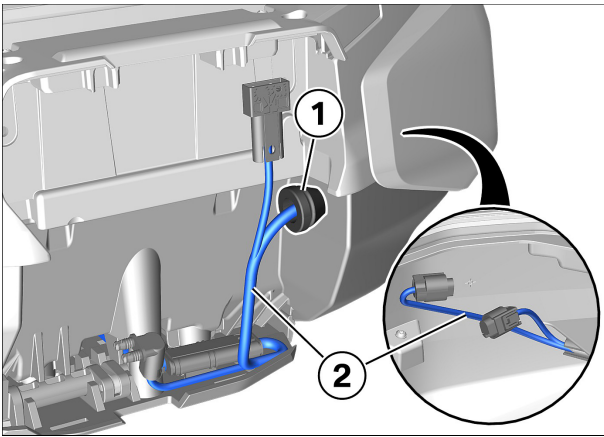
#### ► Detach topcase locking unit

- Open the topcase.
- Remove screws **(1)**.
- Carefully detach locking unit **(2)** from base plate.  
Pry apart at lugs **((arrows))**.  
Do not pull on cable or connector!

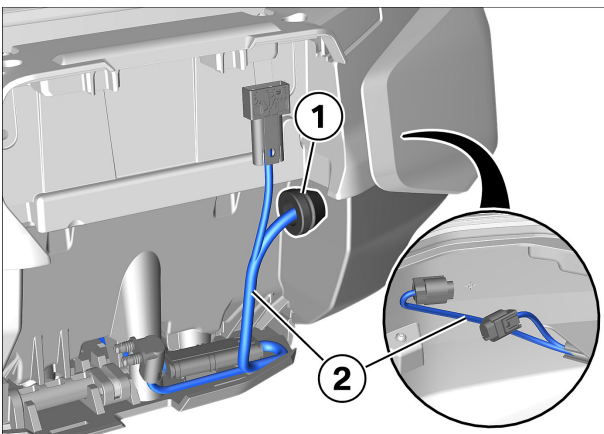


**3****▶ Removing wiring harness in topcase**

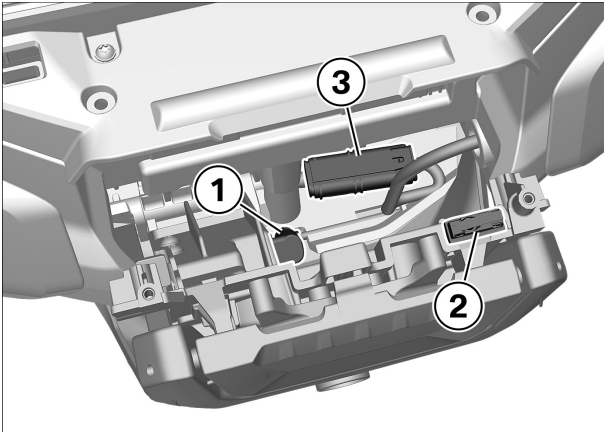
- Disconnect connector **(1)** for servomotor if necessary.
- Disconnect connector **(2)** for microswitch.
- Disconnect connector **(3)**.



- Detach rubber grommet **(1)** and remove together with wiring harness **(2)**.

**4****▶ Installing wiring harness in topcase**

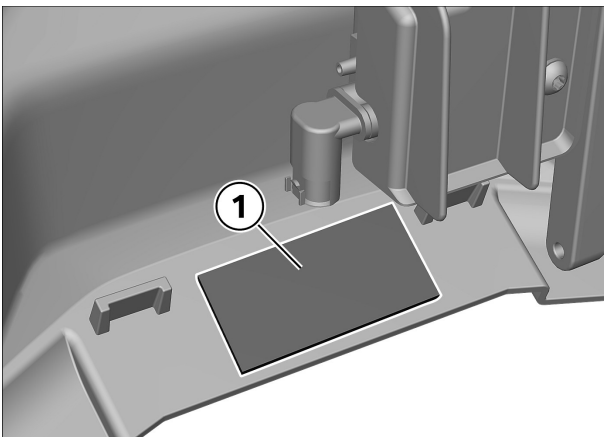
- Install wiring harness **(2)**, attach rubber grommet **(1)** to topcase.



- Connect connector **(1)** for servomotor if necessary.
- Connect connector **(2)** for microswitch.
- Connect connector **(3)**.



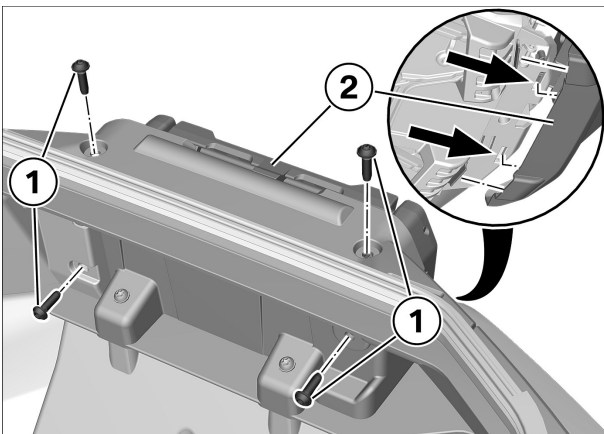
**5**



► **Attaching topcase locking unit**

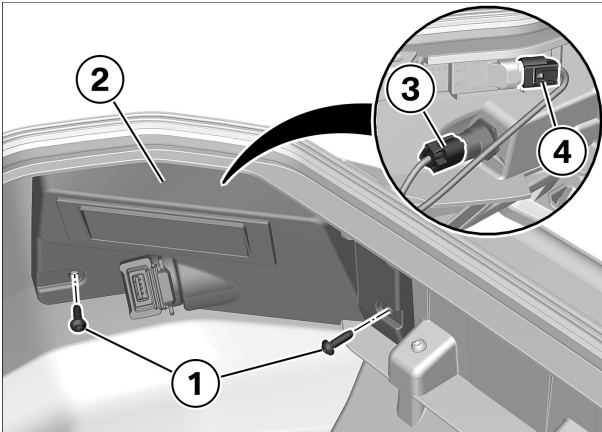
- Renew adhesive tape **(1)** if damaged.

Rattle prevention: use standard, double-sided adhesive tape (cut to size as required).



- Attach locking unit **(2)** to base plate.  
Engage hooks **((arrows))**.
- Install screws **(1)**.  
2.4 x 14



**6****▶ Installing cover for topcase socket**

- Connect connector for socket (3) and interior light (4).
- Position cover (2) and install screws (1).

**7****▶ Functional check of topcase electrics**

- Mount topcase on vehicle.
- Perform functional check:
  - Ignition on
  - Interior lamp must light up
  - Socket must charge connected smartphone or similar