



SIB 23 01 25

SERVICE ACTION: check ASA Clutch Release Lever And Replace If Necessary  
2025-10-24

## MODEL

Model	Model Description	Model Code
KA1	R 1300 GS (With option 22A ASA)	0M23
KA2	R 1300 GS Adventure (With option 22A ASA)	0M33

The affected vehicles have been marked with campaign number **0023220000** in AIR.

In order to determine if a specific motorcycle is affected by this campaign, it will be necessary to verify the vehicle VIN in AIR (Aftersales Information Research). Based on the response of the system, either proceed with the repair or take no further action. Please note, open campaigns or vehicle stops may not appear in DCS Warranty Vehicle Inquiry or sales systems until 24-72 hours after they are announced, therefore AIR is always the recommended method for determining open campaigns and vehicle stops.

## SITUATION

In affected vehicles, an incorrect bolt may be installed in the clutch release lever of the ASA (Automated Shift Assistant, SA 022A) transmission. This may result in premature wear to the bolt. At an advanced stage, this wear typically leads to noise concerns and may also cause clutch malfunctions.

The affected vehicles have been placed under the delivery stop **STOP230007** associated with campaign number 0023220000, which will be lifted upon completion of this technical campaign.

## PROCEDURE

For vehicles that have not yet been delivered, the ASA clutch release lever must be replaced (without prior inspection) per repair procedures "11 00 050 Remove / Installing engine and 23 41 006 Replacing ASA clutch operation lever (engine removed)".

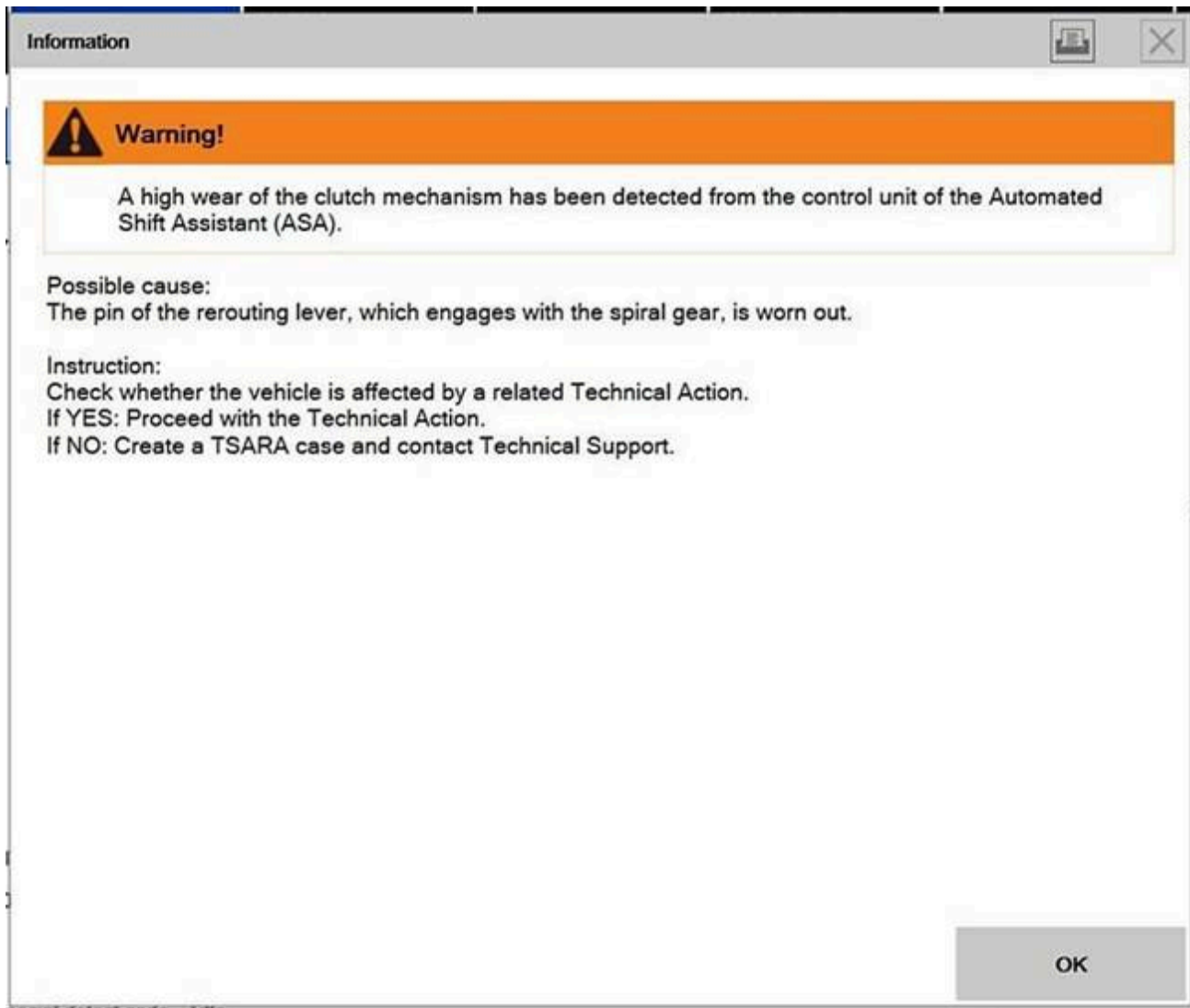
In all instances in which the vehicles have already been handed over to customers, the repair must be performed at the next workshop visit if mileage requirements are met.

**NOTE: Premature wear is identified in ISTA Version 4.55.30 and newer after a specific mileage. The specific mileage must be met before the check can be performed. It is the dealer's due diligence to make sure the ISTA software level is correct, and the motorcycle is at or surpassed (not before) the required mileage before performing any checks and or repairs.**

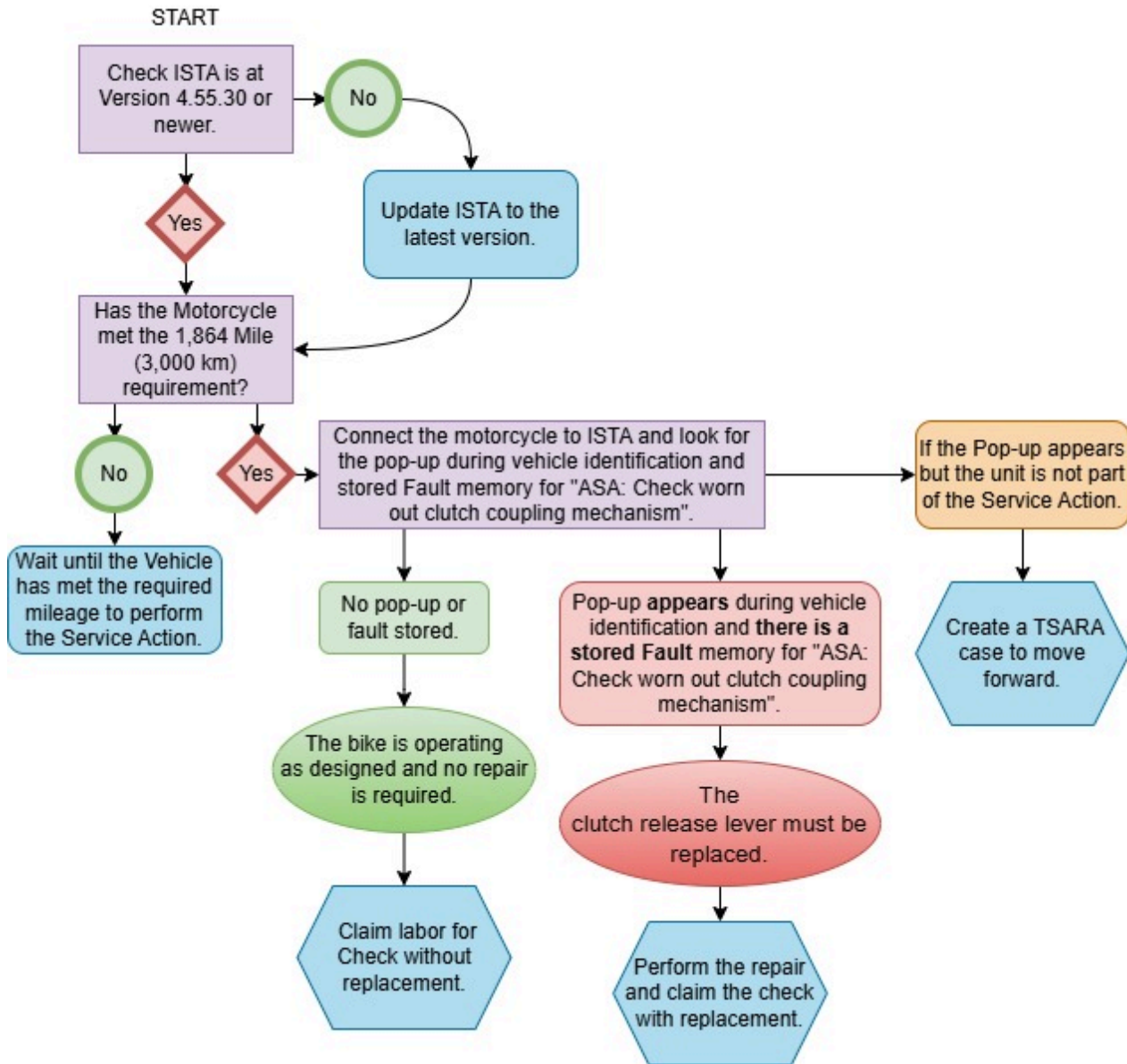
1. Check Total Distance of the Motorcycle. Has 1,864 miles (3,000 km) been reached?
  - a. If **NO** – The milage has not been met in order for ISTA to identify premature wear and must wait until the milage is met to perform and complete this campaign at the next workshop visit.
  - b. If **YES** – The Milage has been met, move to step 2.
2. Connect the Motorcycle to ISTA and Identify the vehicle and look for the relevant POP-UP screen (example below) and check for specific fault memory "S 1038 – ASA worn out coupling mechanism" is stored

- a. If **NO** pop-up screen appeared and the fault S 1038 ASA is **NOT** stored, then the motorcycle is operating as designed and you can claim "The Check" labor below only.
- b. If the pop-up screen **appeared** and the S 1038 ASA fault **is stored**. Then the ASA clutch release lever needs replaced per repair procedures "11 00 050 Remove / Installing engine and then 23 41 006 Replacing ASA clutch operation lever (engine removed)".
- c. If the pop-up screen appeared and the unit is not part of this campaign a TSARA case is required to progress.

### Pop-Up Example:



### Workflow For Clarification:



## PARTS INFORMATION

Obtain and confirm the part numbers for your specific vehicle by entering the chassis number in ETK which takes into account specific equipment and/or options.

Additional parts like gaskets, hardware and chemicals may be required for the complete repair.

### Part Number (If replacement is necessary)

23 00 7 105 444	Clutch release lever	1×
07 12 9 908 404	Screw M6×16-8.8 MK	2×
07 12 9 909 660	Screw M6×35-10.9-MKL	3×
07 11 9 963 073	Sealing ring	1×
07 14 7 923 170	Cheese head screw, micro-encapsulated (M12×50)	2×
07 14 7 923 169	Cheese head screw, micro-encapsulated (M14×1.5×265)	2×
07 14 7 109 290	Cheese head screw, micro-encapsulated (M14×1.5×85 MKL)	2×
07 12 9 909 651	Cheese head screw, M10×70-10.9	2×
18 51 9 445 093	Exhaust manifold seal	2×

18 51 8 405 432	Rear silencer clamp	1×
16 11 7 105 878	Fuel tank bolt, front	2×
61 31 8 547 664	Body screw without collar (M6 × 16 MK)	6×
07 12 9 909 938	Cheese head screw, M8x50-U2-10.9	6×

## CLAIM INFORMATION

Please submit claims via the normal claim process using the information below:

### Defect code

00 23 22 00 00	Check ASA clutch release lever, replace if necessary
----------------	--

### Labor Operation Check Only:

61 00 002	Checking Software	3 FRU
+61 00 502	Checking Software	2 FRU

### Labor Operation Check and Replace:

61 00 002	Checking Software	3 FRU
+61 00 502	Checking Software	2 FRU
+11 00 541	<b>R 1300 GS</b> Removing/Installing engine	58 FRU
+11 00 541	<b>R 1300 GS Adventure</b> Removing/Installing Engine	62 FRU
+23 41 506	Replace lever for automated shift assistant clutch control (engine removed)	8 FRU
46 52 510	Mounting and dismounting the rear-wheel stand with special tools (for motorbikes without a center stand)	1 FRU

FRUs includes all repair procedures to complete the task with allowance for necessary ancillary tasks (e.g., visual inspection, lubrication, cleaning parts etc.) and administrative tasks.

Labor operation code 61 00 002 is a Main labor operation. If you are using a Main labor code for another repair, use the Plus code labor operation instead.

## QUESTIONS REGARDING THIS BULLETIN

Technical inquiries	Contact the BMW Technical Support Group via TSARA
Warranty inquiries	Submit an IDS ticket to the Warranty Department
Parts inquiries	Submit an IDS ticket to the Motorrad Parts Department

Powered by [Froala Editor](#)

Supporting Materials

[picture\\_as\\_pdf 23 01 25 - SA - Check Clutch Release Lever.pdf](#)

