



Maserati

PERSONAL SERVICE LAB

MASTERS OF CARE

Low Pressure Fuel Pump Diagnosis

IMPORTANT NOTICE This bulletin supersedes MAS004819 DS 25-22 released on July 30, 2025. It contains updated information, please ensure all previous versions are discarded.

DATE: OCTOBER 23, 2025

This bulletin provides updated diagnostic and repair instructions for identifying and addressing corrosion-related concerns in the low-pressure fuel pump on all Maserati models equipped with internal combustion engines (ICE).

Affected Models: All Models (All MY) equipped with ICE.

TechDocs Section 01.43 - 1 FUEL PUMPS AND CONNECTION LINES

Concern:

No fuel delivery from the low-pressure fuel pump, possibly accompanied by one or more of the following DTCs:

- **P008A00** – Low Pressure Fuel System Pressure Too Low
- **P263500** – Fuel Pump 1 Low Flow/Performance

Diagnostic and Repair Steps:

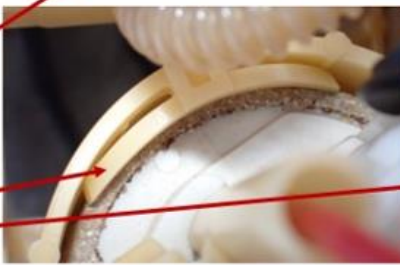
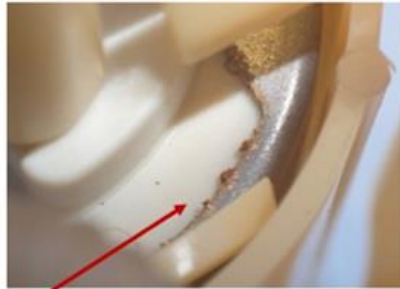
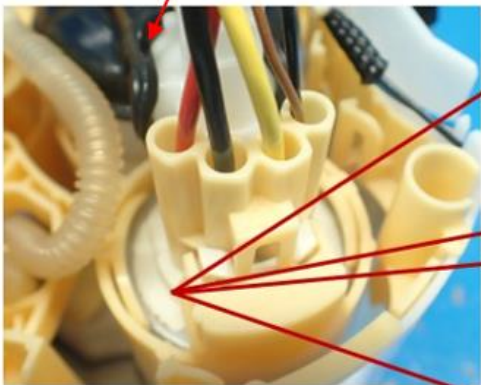
Step 1 – Customer Fueling History

Gather the following information:

- Volume of fuel added during last refueling
- Date of last refueling
- Brand and full address of the fuel station
- Whether this station is used regularly
- If not, provide details of the most frequently used station

Step 2 – Fuel Pump Inspection

- Remove the fuel pump following the procedure in the Technical Documentation
- Inspect the pump for signs of corrosion (refer to below image)



Step 3 – Documentation and Reporting

- If corrosion is found:
 - Take clear photos of the affected pump
 - Open a **Blue On Line case for Technical Support** and attach the photos
 - Replace the fuel pump
 - **Note:** Fuel pump replacement due to corrosion is **not covered under warranty** (considered external influence)
- If no corrosion is found:
 - Open a **Blue On Line case for Technical Support**
 - Attach inspection photos so that TSO may assist with root cause analysis

Step 4 – Fuel Tank Cleaning Procedure

Follow these steps:

1. Remove the fuel tank according to the Technical Documentation
2. Empty the **primary reservoir chamber**
3. Tilt the tank 90° to transfer fuel from the **secondary to the primary reservoir**, then empty again
4. Allow the tank to dry for **at least 24 hours** in a ventilated area
 - Protect all openings to prevent contamination

Step 5 – Reinstallation

- Reinstall the fuel tank and a **new fuel pump** as per TechDocs (Workshop Manual).

Warranty Claim Information (Only if No Corrosion Found):

Description	Code
Component Code	1.43.002
Bulletin Topic – Checks (Steps 1, 2, 3)	1.43.002.A (0.60 h)
Remove/Refit Fuel Tank and Pump (Steps 4, 5)	Refer to TechDocs (Workshop Manual)

Note: Only the operations described in this bulletin will be approved under warranty. Additional requests will not be accepted.

Important Notes:

- The information requested in this bulletin is **mandatory** and must be attached to the related Blue On Line report
- Maserati reserves the right to modify or cancel claims that do not meet the criteria outlined in this communication.

For any questions, please contact **Technical Service Operations**