



PERSONAL SERVICE LAB

MASTERS OF CARE

Grecale (MHEV) Momentary Coolant Leak

DATE: October 15, 2025

This bulletin explains how to identify and handle momentary coolant leaks from the water pump's weeper chamber on Maserati MHEV engines. It helps technicians understand what is normal during initial operation, what needs attention, and how to decide if the pump should be replaced.

MODELS INVOLVED: Grecale MHEV (M182) (All MY).

Customer Concern:

Coolant may be seen around the water pump, especially near the weeper chamber. In some cases, coolant may drip from the chamber.

Important Clarification:

Do **not** confuse this anomaly with:

- Leaks from the **rubber gasket** between the water pump and engine block
- Leaks from the **inlet pipe nipples**

This bulletin only applies to leaks from the weeper chamber.

Operational Description:

The weeper chamber is designed to collect a small amount of coolant (less than 3ml/hour) that may pass through the dynamic seal of the water pump.

- This is normal during the first hours of engine operation.
- It may leave a red stain or shadow around the chamber.
- This process allows the seal's mating surfaces to self-adapt and helps drain vapor condensation.
- This momentary leakage does not affect pump performance and does not require replacement.

If the situation does not match the conditions described in this bulletin:

- Open a **BOL Support Request** and include all relevant details and documentation.
- This ensures Technical Support can review the case and provide further guidance.

Diagnostic Procedure

1. Initial Inspection:

- Check the **coolant level** before starting any test.

2. Check if coolant is actively dripping from the weeper chamber:

- Proceed with the following steps:
 - Raise the vehicle and **remove the under-engine cover** to access the water pump area.

NOTE: If you see **red stains or traces** of coolant around the weeper chamber of the water pump, **do not** consider it a confirmed leak. These marks are common during early operation and do not require repair or replacement. Clean the area and continue with the inspection.

- Start the engine and let it idle.
- Vary engine speed between **2000–4000 rpm** for 1–2 minutes.
- Closely observe the weeper chamber during this test.

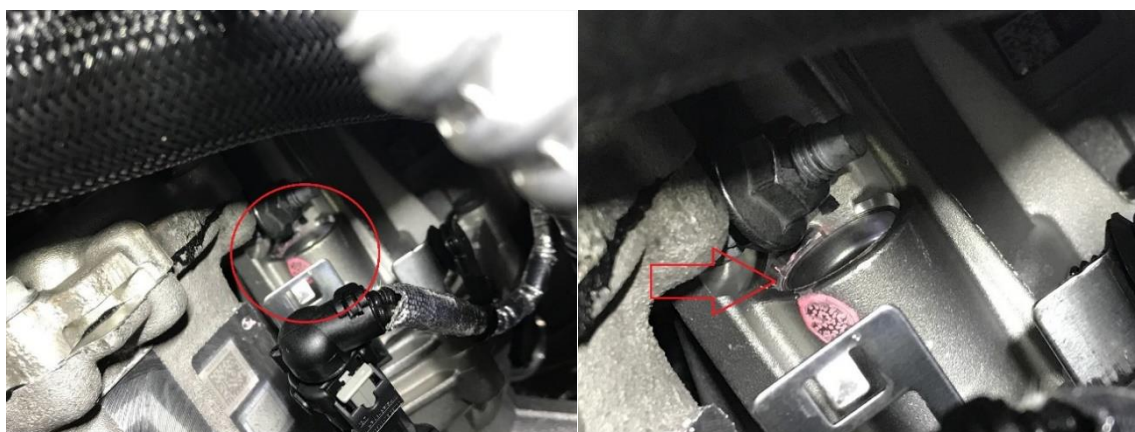
3. Evaluate the result:

- If coolant **continues to drip** after the test:
This may indicate that debris is trapped in the dynamic seal or the seal is not functioning properly.
 - Replace the water pump (possible permanent damage to the dynamic seal).
 - Take **clear photos and a video** of the leak and attach them to your warranty claim.
- If the leak **stops**:
 - No further action is needed.
 - Clean all accessible surfaces around the water pump (without removing other components).

4. Final Check:

- Recheck the **coolant level** after the test to confirm whether any loss occurred.
- Return the vehicle to the customer.

Refer to the pictures below for an example of **the weeping chamber**:



Warranty Claim Info:

For the operations described in this publication, only the operations listed here will be approved under warranty.

Description	Code
Component Code	1.72.001
Check (including the removal of the under-engine cover) Pump replacement	1.72.001.A (0,30 h) Refer to Technical Documentation

NOTE: Maserati reserves the right to change or cancel claims that do not meet the criteria set out in this communication.

Please do not hesitate to contact us for any questions you may have.

Kind regards,

TECHNICAL SERVICE OPERATIONS