



## STAR ONLINE PUBLICATION



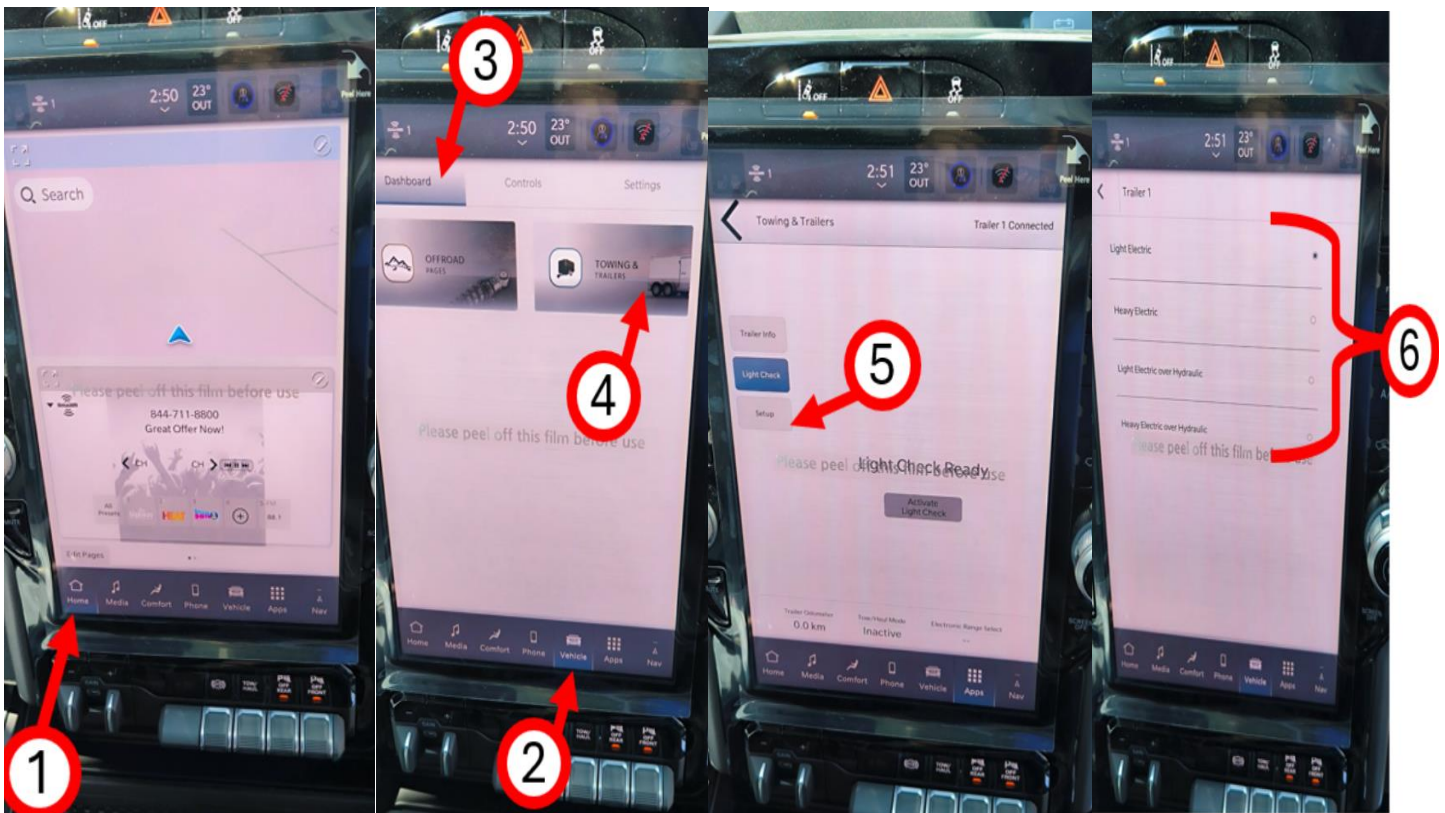
**Case Number:** S2508000090

**Release Date:** October 2025

**Symptom/Vehicle Issue:** Brakes Appear to Drag After Setting Trailer Brake Feature in the Radio Settings

**Customer Complaint/Technician Observation:** The owner says the brakes feel like they are staying applied when they are towing, this may have occurred after altering the trailer settings within the radio. The technician may or may not be able to duplicate.

**Discussion:** If the owner is complaining of a brake drag condition during towing, see the below images to ensure the system selection seen in step #6 matches the trailer system brakes.



This document does not authorize warranty repairs. This communication documents a record of past experiences. STAR Online does not provide any conclusions about what is wrong with the vehicle. Rather, it captures all previous cases known that appear to be similar or related to the vehicle symptom / condition. You are the expert, and you are responsible for deciding on the appropriate course of action.

**Contact STAR Center, or your Technical Assistance Center Via TechConnect, eCONTACT or Service Library entry if no solution is found.**