

Technical Service Bulletin (TSB)
Radio USB Software Update to U40.20

REFERENCE:	TSB: 08-349-25 GROUP: 08 - Electrical	Date:	October 22, 2025	REVISION:	–
VEHICLES AFFECTED:	2026 (RU) Chrysler Pacifica This bulletin applies to vehicles built on or before September 05, 2025 (MDH 0905XX) equipped with: <ul style="list-style-type: none"> • Uconnect 5 Nav w/10.1" Display (Sales Code UBN). • Uconnect 5 Nav w/10.1" Display (Sales Code UEN). • Uconnect 5 w/10.1" Display (Sales Code UBG). • Uconnect 5 w/10.1" Display (Sales Code UEG). 			MARKET APPLICABILITY: <input checked="" type="checkbox"/> NA <input type="checkbox"/> MEA <input type="checkbox"/> SA <input type="checkbox"/> IAP <input type="checkbox"/> EE <input type="checkbox"/> CH NOTE: This bulletin applies to North America markets.	
CUSTOMER SYMPTOM:	The customer may comment on one or more of the following: <ul style="list-style-type: none"> • Compass is not working. • Navigation screen intermittently freezes. • Black bar appears over the media screen as if the radio is in night mode (Rearview Camera (RVC) Functions Normally). 				
CAUSE:	Software improvements				

REPAIR SUMMARY:

This bulletin involves inspecting the software level and updating the software to U40.20.

CLAIMS DATA:

Labor Operation No:	Labor Description	Skill Category	Labor Time
18-60-F2-CW	Radio, Software - Create USB Jump Drive from Uconnect Website U40.20 (One Time Only) (0 - Introduction)	6 - Electrical and Body Systems	0.2 Hrs.
18-60-F2-CX	Radio, Check Software Level and Perform Software Update U40.20 (0 - Introduction)	6 - Electrical and Body Systems	0.5 Hrs.
Failure Code	CC	Customer Concern	

The dealer must use failure code CC with this Technical Service Bulletin.

- If the customer's concern matches the SYMPTOM identified in the Technical Service Bulletin, failure code CC is to be used.
- When utilizing this failure code, the 3C's (customer's concern, cause and correction) must be provided for processing Technical Service Bulletin flash/reprogramming conditions.

DIAGNOSIS:

Using a Scan Tool (wiTECH) with the appropriate Diagnostic Procedures available in DealerCONNECT/ Service Library, verify all related systems are functioning as designed. If Diagnostic Trouble Codes (DTCs) or symptom conditions, other than the ones listed above are present, record the issues on the repair order and repair as necessary before proceeding further with this bulletin.

If the customer describes any of the symptoms listed above in the customer symptom section, perform the Repair Procedure.

SPECIAL TOOLS/EQUIPMENT:

Description	Ref. No.	Notes
wiTECH or Equivalent	–	–

REPAIR PROCEDURE:

NOTE: Install a battery charger to ensure battery voltage does not drop below 13.2 volts. Do not allow the charging voltage to climb above 13.5 volts during the flash process.

NOTE: If this flash process is interrupted/aborted, the flash should be restarted.

1. Check if the radio software has been updated. Go to “Vehicle Settings” then select “ System Information” and look for “Radio Version”.
2. Was the radio updated to U40.20?
 - YES >>> This bulletin does not apply. Additional diagnostics may be needed.
 - NO >>> Proceed to [Step 3](#).
3. Has a **4GB** USB flash drive been created?
 - YES >>> Proceed to [Step 11](#).
 - NO >>> Proceed to [Step 4](#).
4. Go to DealerCONNECT>Service>Uconnect Command Center>Uconnect>More Information>Dealer software downloads to download the files.
5. Use a blank USB-C flash drive with at least **4GB** of space. Follow the on-screen instructions to download the software files.

NOTE: When downloading the software file, always select the MAC version, regardless of the computer being used.

- Download the software update file to your local PC's desktop. Make sure to select the "MAC" radial button for all downloads Fig. 1.

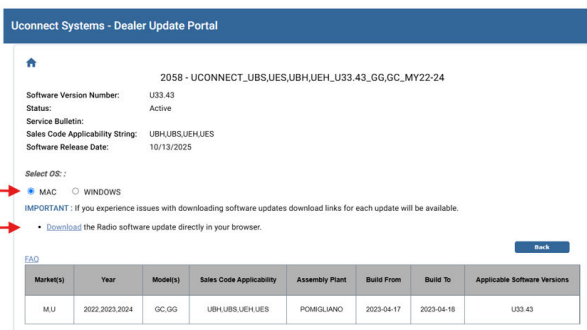


Fig. 1
MAC Download Steps

- Download the radio SW from DealerCONNECT to a blank USB flash drive. The USB flash drive should be at least **4GB** and formatted to **NTFS**.
- Do not unzip** the folder/file and move all contents to the root directory of the USB.
- There should only be one file on the USB root directory labeled as a zip folder.
- Once the USB flash drive have been created, it is recommended to label the USB flash drive with the bulletin number and proper radio Sales Codes.
- Start the vehicle and insert the correct USB flash drive with new software into the USB port.

CAUTION!

Make sure no other device is plugged into any of the USB ports while performing this re-program. If other devices are connected to USB ports during re-programming, it may cause failure of files to be loaded which may cause the radio to need replacement.

- Once the system has verified there is an available update, press the "Update Now" button. Make sure the vehicle is in park. Do NOT turn the ignition off until the two minute timer has expired. The ignition doesn't have to be turned off to update the radio's software Fig. 2.

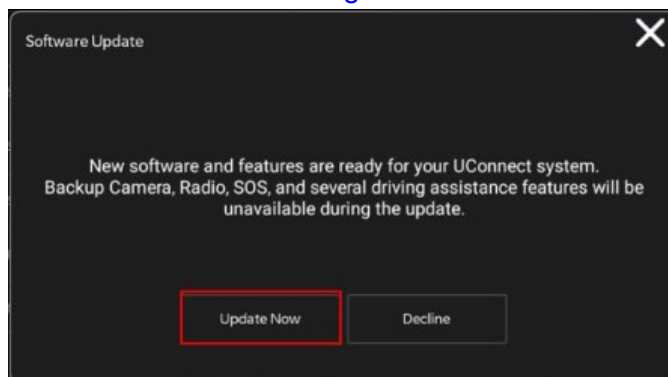


Fig. 2
Software Update Is Available

13. Press the “Continue” on the display screen [Fig.3](#).

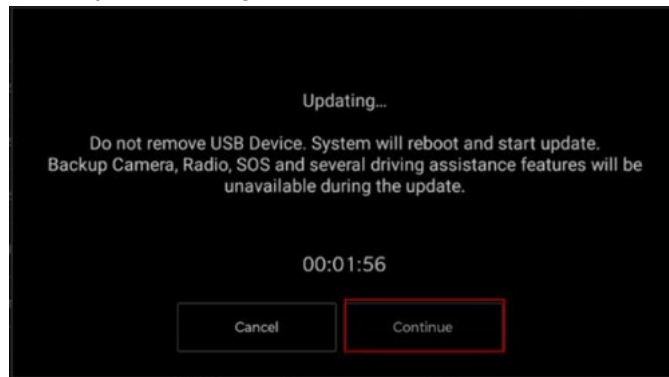


Fig. 3

Continue Display Screen

14. The radio will reboot and the update will begin. The update should only take 30 minutes [Fig. 4](#).

NOTE: Do NOT turn off the vehicle when the software update is completed and directed to remove the USB flash drive.



Fig. 4

Software Update Completed

15. **Do Not** turn off the ignition at this point. The update is still in process, wait until the radio restarts and the home screen is displayed. This should take around five minutes

16. Sometimes the radio will display an error pop up “SWITCH- INVALID_BINARY “ after successful radio update. Please ignore this error message and press “OK” to continue [Fig. 5](#).

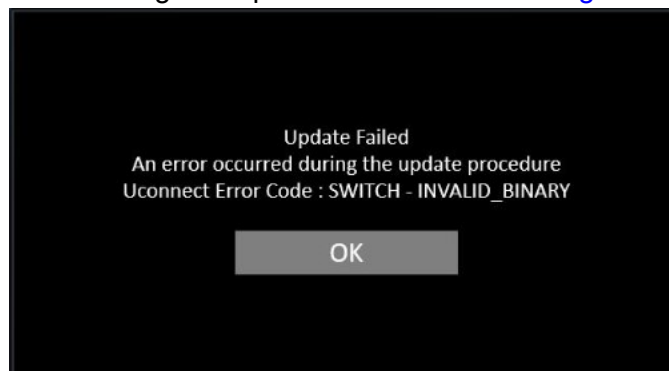


Fig. 5

Error Message

17. Press “OK” to continue [Fig. 6](#).

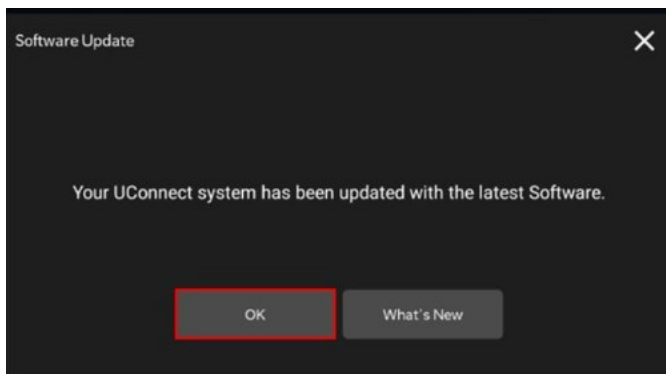


Fig. 6

Radio Software Has Been Updated

18. Check if the radio software has been updated. Go to “Vehicle Settings” then select “ System Information” and look for “Radio Version”.
19. Was the radio updated to U40.20?
 - YES>>> Proceed to [Step 20](#).
 - NO>>> Perform the update one more time. Proceed to [Step 11](#).
20. Perform a Factory Reset. This can be found in the radio under Vehicle Setting > Reset >Perform Factory Reset.
21. Once the reset is completed turn off the ignition open and closed the drivers door and let all modules go to sleep. Make sure the scan tool is not connected at this point.
22. After all the modules have been a sleep mode for five minutes, turn the ignition back on.
23. Before clearing all DTCs, cycle the ignition Off and back to “Run” quickly (within two seconds).
24. Using wiTECH, clear all DTCs that may have been set in any module due to reprogramming.

POLICY:

Reimbursable within the provisions of the warranty.

This bulletin is supplied as technical information only and is not an authorization for repair. No part of this publication may be reproduced, stored in a retrieval system, or transmitted, in any form or by any means, electronic, mechanical, photocopying, or otherwise, without written permission of FCA US LLC.