



# Service Bulletin

Bulletin No.: 24-NA-170

Date: May, 2025

## TECHNICAL

**Subject: Check Engine Lamp Illuminated with HVAC Related DTC**

Brand:	Model:	Model Year:		Break Point:		Engine:	Transmission:
		from	to	from	to		
Chevrolet	Colorado	2023	2024	SOP	August 6, 2024	—	—
GMC	Canyon	2023	2024				

<b>Involved Region or Country</b>	North America, Middle East, GM Korea Company
<b>Additional Options (RPOs):</b>	HVAC SYSTEM-AIR CONDITIONER FRT, AUTO TEMP CONT, AUX TEMP CONT (RPO CJ2)
<b>Condition</b>	Some customers may comment on a Check Engine Lamp illuminated. Technicians may find an HVAC related DTC- B2A87, B2A8A, B2A8B, B2A93, B2A94, B2A96, or B2A97.
<b>Cause</b>	The cause of the condition may be software anomalies, and that the HVAC module was not previously reprogrammable.
<b>Correction</b>	If the vehicle has an HVAC DTC, then reprogram the Heater and Air Conditioning User Interface to the latest software and verify if condition can be duplicated. If the DTC does not reset, then the issue has been corrected. If the DTC does reset, then refer to SI for further diagnostics.

### Service Procedure

**Important:** Service agents must comply with all International, Federal, State, Provincial, and/or Local laws applicable to the activities it performs under this bulletin, including but not limited to handling, deploying, preparing, classifying, packaging, marking, labeling, and shipping dangerous goods. In the event of a conflict between the procedures set forth in this bulletin and the laws that apply to your dealership, you must follow those applicable laws.

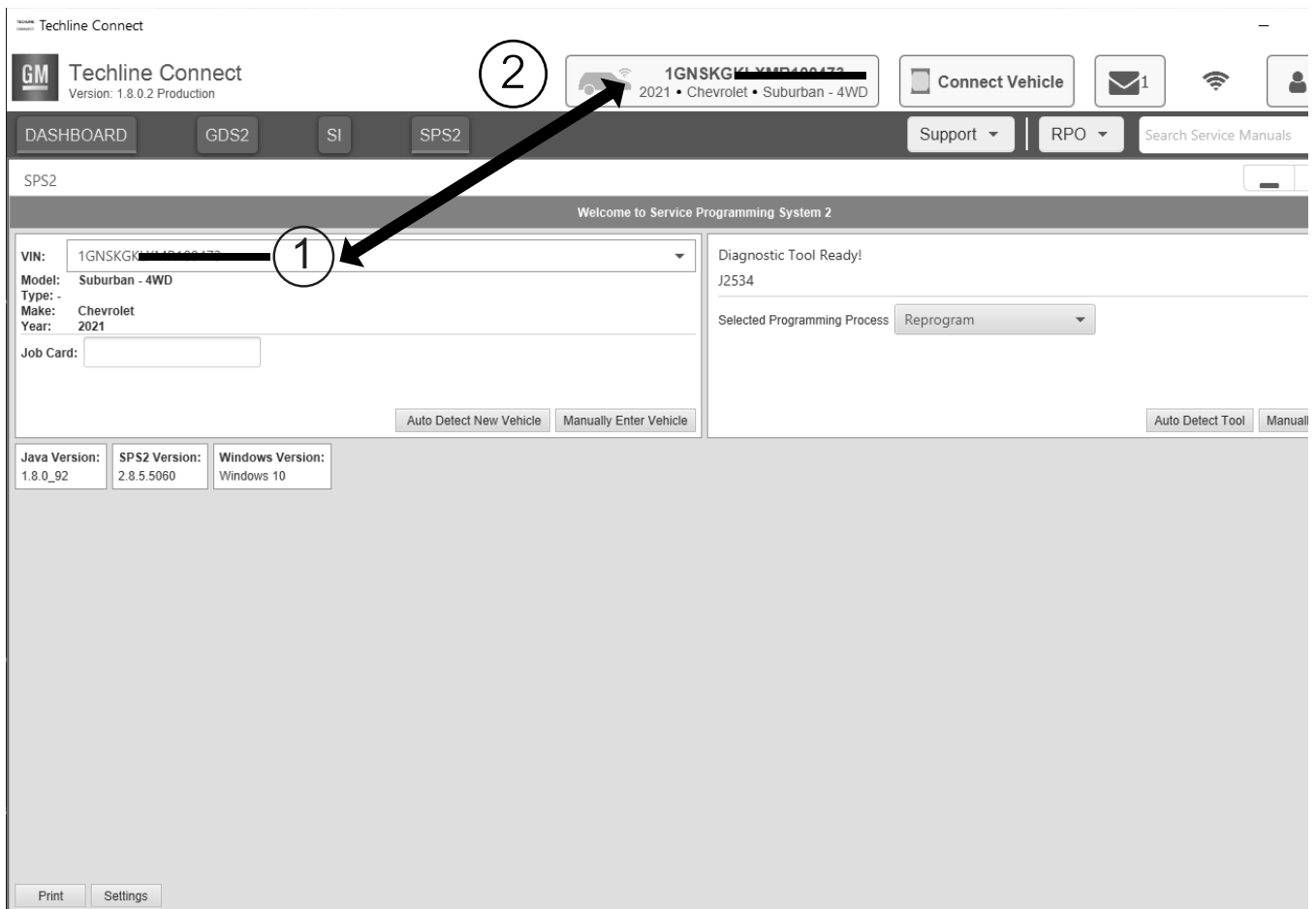
**Caution:** Before downloading the update files, be sure the computer is connected to the internet through a network cable (hardwired). DO NOT DOWNLOAD or install the files wirelessly. If there is an interruption during programming, programming failure or control module damage may occur.

- Ensure the programming tool is equipped with the latest software and is securely connected to the data link connector. If there is an interruption during programming, programming failure or control module damage may occur.
- Stable battery voltage is critical during programming. Any fluctuation, spiking, over voltage or loss of voltage will interrupt programming. Install a GM Authorized Programming Support Tool to maintain system voltage. Refer to [www.gmdesolutions.com](http://www.gmdesolutions.com) for further information. If not available, connect a fully charged 12V jumper or booster pack disconnected from the AC voltage supply. DO NOT connect a battery charger.
- Follow the on-screen prompts regarding ignition power mode but ensure that anything that drains excessive power (exterior lights, HVAC blower motor, etc.) is off.
- Clear DTCs after programming is complete. Clearing powertrain DTCs will set the Inspection/Maintenance (I/M) system status indicators to NO.

**Important:** The service technician always needs to verify that the VIN displayed in the TLC left side drop down menu and the top center window match the VIN plate of the vehicle to be programmed prior to using Service Programming System 2 (SPS2) for programming or reprogramming a module.

- For the TLC application, service technicians need to always ensure that the power mode (ignition) is “ON” before reading the VIN from the vehicle’s VIN master module and that they do not select a VIN that is already in the TLC application memory from a previous vehicle.
- If the VIN that shows up in the TLC top center window after correctly reading the VIN from the vehicle does not match the VIN plate of the vehicle, manually type in the VIN characters from the vehicle VIN plate into the TLC top center window and use these for programming or reprogramming the subject module with the correct vehicle VIN and software and/or calibrations.
- The Engine Control Module (ECM) is the master module (for VIP vehicles) that TLC reads to determine the VIN of the vehicle. If the VIN read from the vehicle by TLC does not match the VIN plate of the vehicle, the ECM also needs to be reprogrammed with the correct VIN, software and calibrations that match the vehicle’s VIN plate.
- The Body Control Module (BCM) is the master module (for GEM vehicles) that TLC reads to determine the VIN of the vehicle. If the VIN read from the vehicle by TLC does not match the VIN plate of the vehicle, the BCM also needs to be reprogrammed with the correct VIN, software and calibrations that match the vehicle’s VIN plate.

**Caution:** Be sure the VIN selected in the drop-down menu (1) is the same as the vehicle connected (2) before beginning programming.

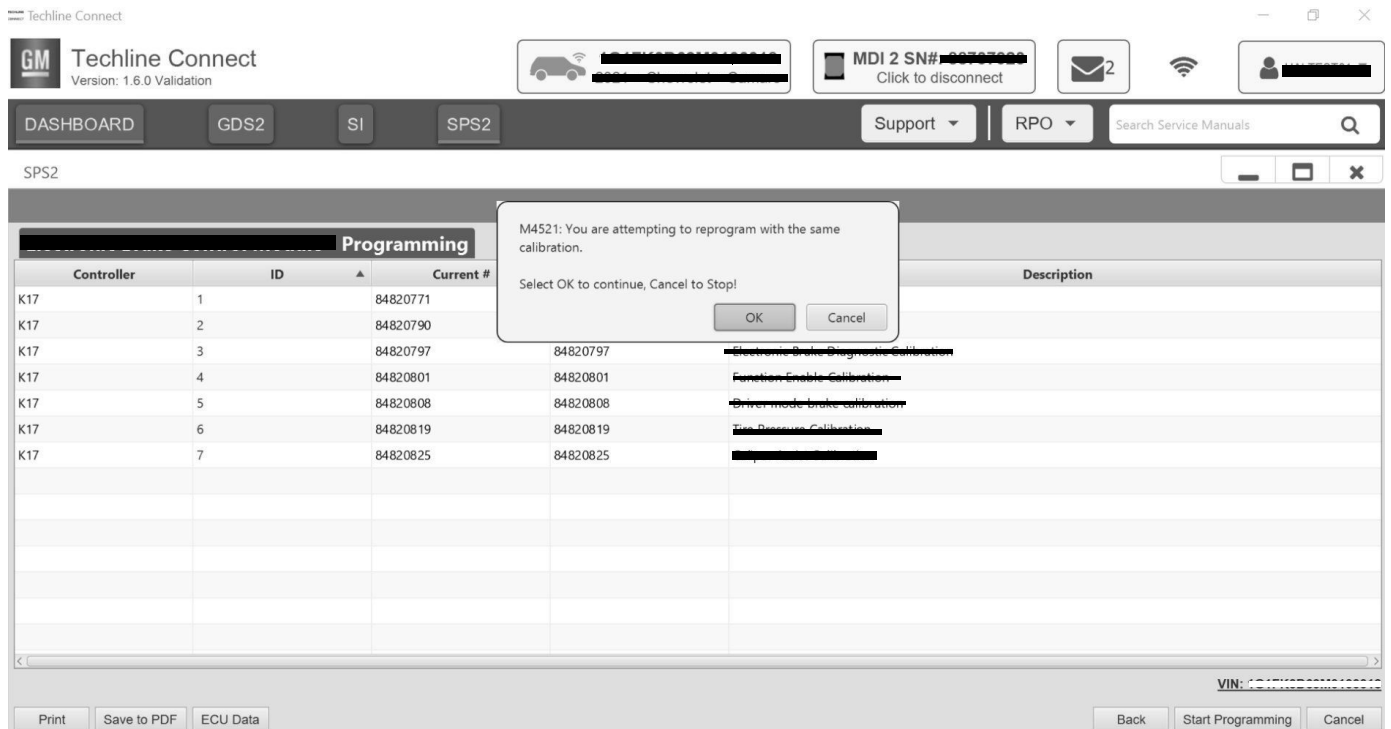


5743643

**Important:** If the vehicle VIN DOES NOT match, the message below will be shown.



5877000



5644477

**Important:** Techline Connect screen shown above.

**Important:** If the same calibration/software warning is noted on the TLC Summary screen, select OK and follow screen instructions. After a successful programming event, the WCC is located in the Service Programming System dialogue box of the SPS Summary screen. Record the WCC on the job card. No further action is required. Refer to the Warranty Information section of this bulletin.

1. Reprogram the Heater and Air Conditioning User Interface Control by performing the following procedure:

Step 1: Ignition OFF, Vehicle OFF

Step 2: Access the Service Programming System (SPS) and follow the on-screen instructions.

Step 3: On the SPS Supported Controllers screen, select A26 Heater and Air Conditioning User Interface Control- Front: Programming and follow the on-screen instructions.

Step 4: Clear DTCs.

In the event of an interrupted or unsuccessful programming event, perform the following steps:

Step 1: Ignition ON. Ensure the control module, DLC and programming tool connections are secure and the SPS software is up to date.

Step 2: Verify the Control Module can be reprogrammed.

If the control module cannot be reprogrammed:

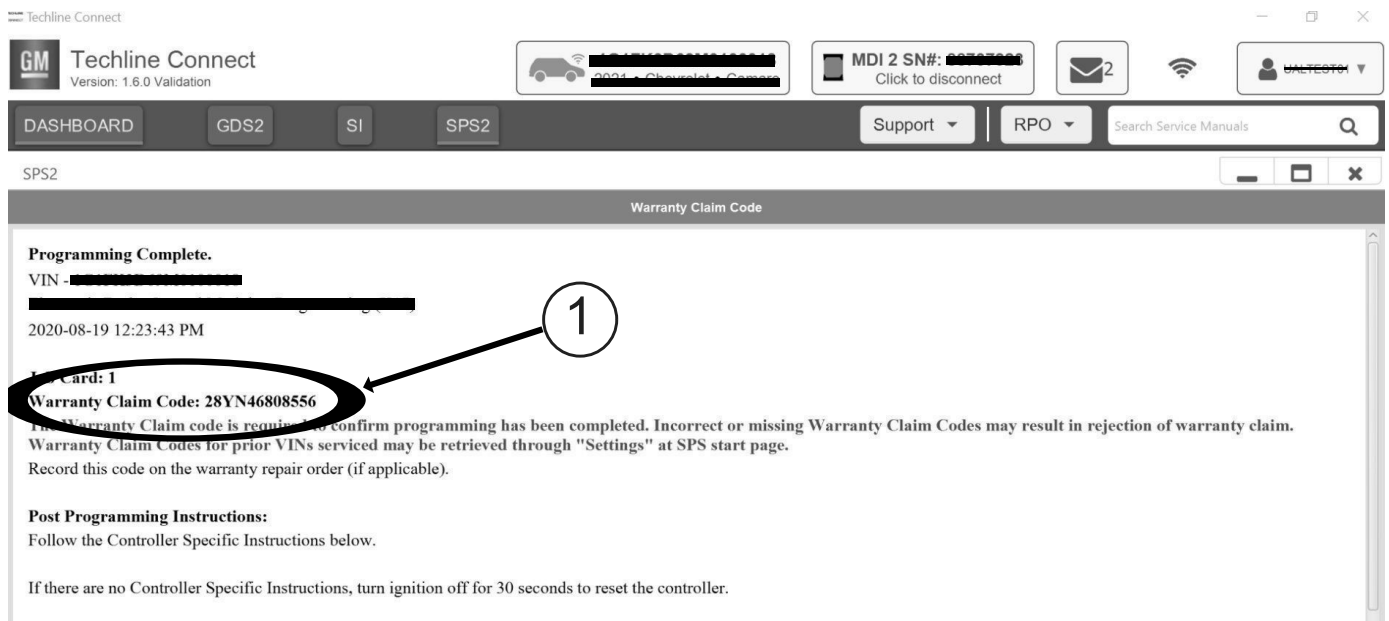
Step 2.1: Ignition OFF for one minute, ignition ON.

Step 2.2: Verify the control module can be reprogrammed.

If the control module cannot be reprogrammed, replace the control module.

If the control module can be reprogrammed.

Step 2.3: All OK.



5644478

**Note:** The screenshot above is an example of module programming and may not be indicative of the specific module that is being programmed. Module selection and VIN information have been blacked out.

**Important:** To avoid warranty transaction rejections, you MUST record the warranty claim code provided on the Warranty Claim Code (WCC) screen shown above on the job card. Refer to callout 1 above for the location of the WCC on the screen.

2. Record the SPS Warranty Claim Code on the job card for warranty transaction submission.

**Warranty Information**

For vehicles repaired under the Bumper-to-Bumper coverage (Canada Base Warranty coverage), use the following labor operation. Reference the Applicable Warranties section of Investigate Vehicle History (IVH) for coverage information.

Labor Operation	Description	Labor Time
2887888*	HVAC User Interface Control Reprogramming for HVAC DTCs and Check Engine Lamp	0.3 hr

\*This is a unique Labor Operation for bulletin use only.

**Important:** To avoid warranty transaction rejections, carefully read and follow the instructions below:

Labour Time [Top]

---

Labour Operation Code:

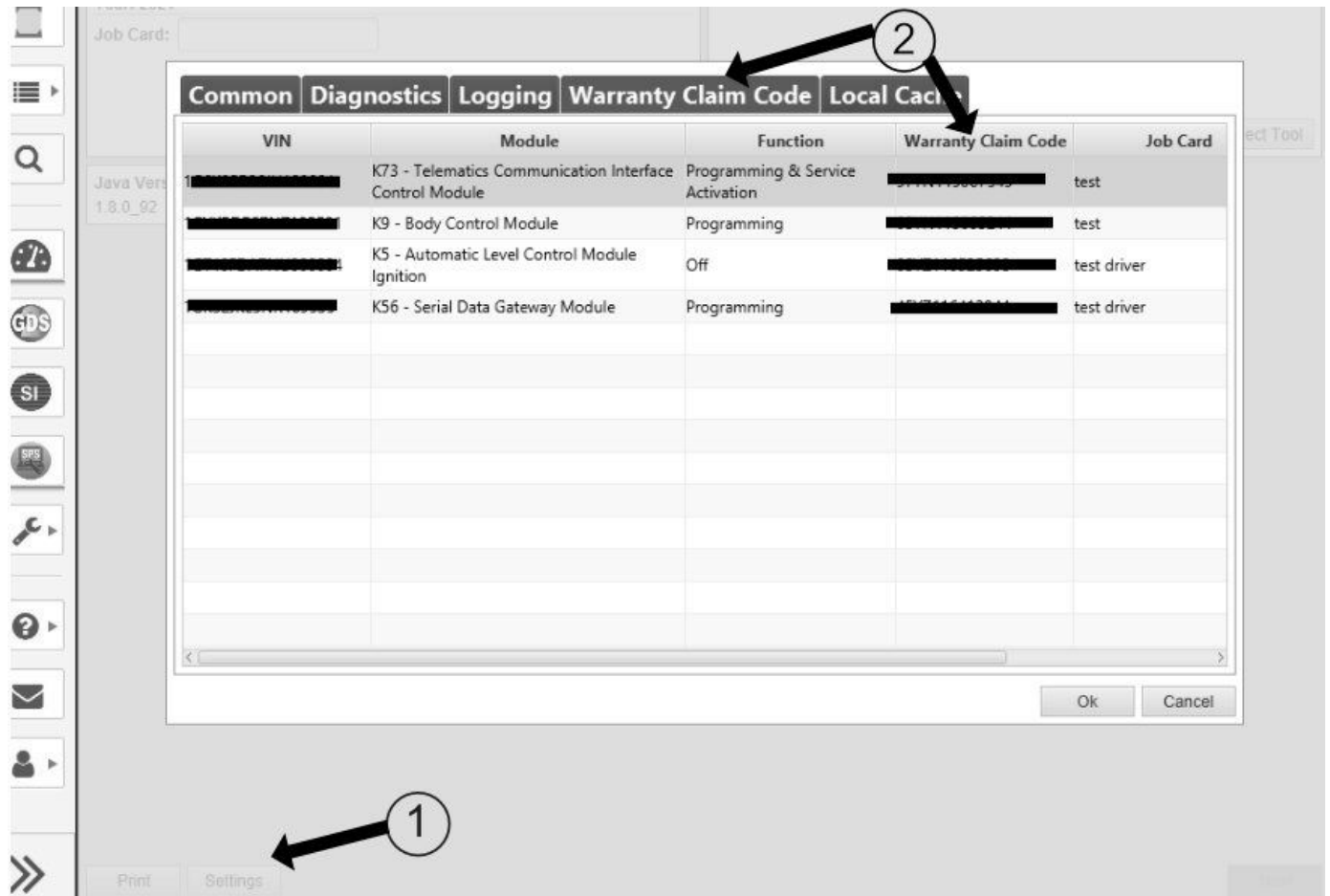
Additional labour op code information:

SPS Warranty Claim Code:

6125814

- The Warranty Claim Code must be accurately entered in the "Warranty Claim Code" field of the transaction.
- When more than one Warranty Claim Code is generated for a programming event, it is required to document all Warranty Claim Codes in the "Correction" field on the job card. Dealers must also enter one of the codes in the "Warranty Claim Code" field of the transaction, otherwise the transaction will reject. It is best practice to enter the FINAL code provided by SPS2.

**Warranty Claim Code Information Retrieval**



6125774

If the Warranty Claim Code was not recorded on the Job Card, the code can be retrieved in the SPS2 system as follows:

1. Open TLC on the computer used to program the vehicle.
2. Select and start SPS2.
3. Select Settings (1).
4. Select the Warranty Claim Code tab (2).

The VIN, Warranty Claim Code and Date/Time will be listed on a roster of recent programming events. If the code is retrievable, dealers should resubmit the transaction making sure to include the code in the SPS Warranty Claim Code field.

<b>Version</b>	3
<b>Modified</b>	Released August 23, 2024 Revised January 09, 2025 - Added the 2023 Model Year Revised May 14, 2025– Added Break Point, added RPO CJ2, updated the concern section, and Service Procedure.

