

Technical Service Bulletin

Topic	Infotainment System - Implementation of Revised Advanced Settings Update Menu Access Procedure
Market area	Bentley: worldwide (2WBE),China 796 VW Import Comp. Ltd (Vico), Beijing (6796)
Brand	Bentley
Transaction No.	2079390/1
Level	EH
Status	Released for publishing
Release date	Oct 20, 2025

New customer code

Object of complaint	Complaint type	Position
vehicle service -> vehicle diagnosis	control modules, services	

Vehicle data

23MY Bentayga Series | 26MY Continental GT/GTC/Flying Spur

Sales types

Type	MY	Brand	Designation	Engine code	Gearbox code	Final drive code
4V1*	2023	E		*	*	*
Z23*	2026	E		*	*	*
Z24*	2026	E		*	*	*
Z32*	2026	E		*	*	*
ZV1*	2023	E		*	*	*

Documents

Document name
master.xml

Condition

This Technical Product Information (TPI) applies to vehicles equipped with infotainment control module 005F operating under specific software configurations.

Affected Software Versions:

23MY Bentayga Series:

SW 4399 (Control Module 005F – Information Electronics 1)

SW 4430 (Control Module 005F – Information Electronics 1)

26MY Continental GT/GTC:

All software versions associated with Control Module 005F – Information Electronics 1.

The revised access procedure is applicable to all vehicles operating the above software configurations.

Technical Background

A revised procedure for accessing the advanced settings (Red) 'update' menu has been introduced. This update enhances cyber security and streamlines diagnostic workflows by replacing the legacy method with a structured approach via Guided Fault Finding.

Refer to the *Measure* section for updated procedure on accessing the menu.

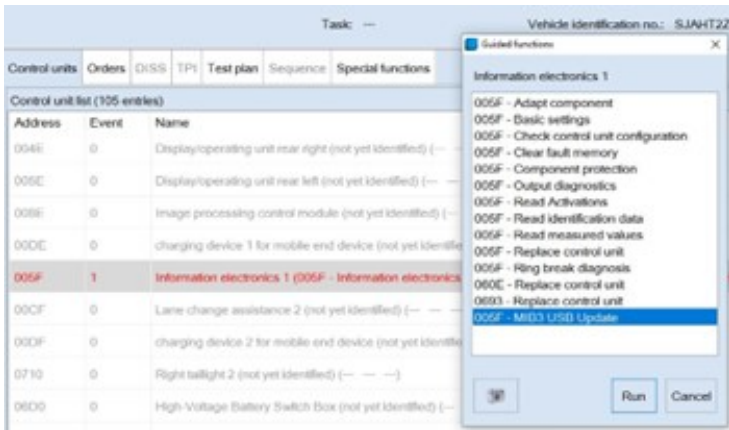
Production Solution

Not applicable

Service

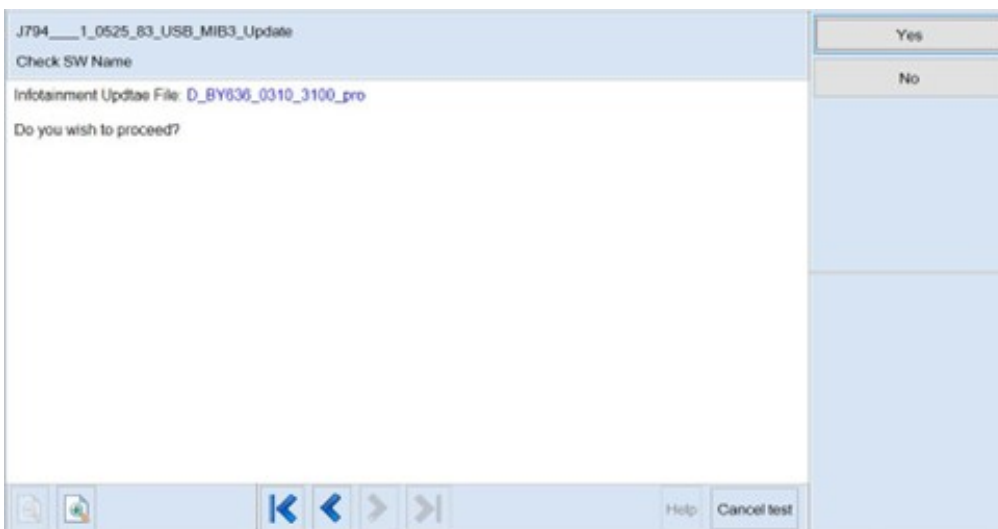
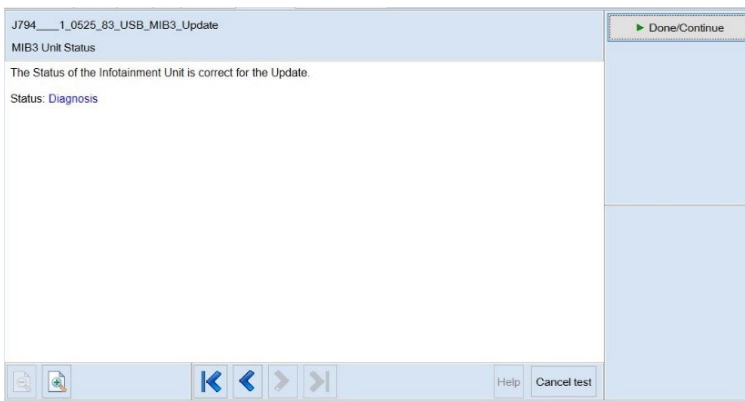
To access the RED update menu under the new procedure:

1. Using the VAS diagnostic tool with the latest ODIS updates, connect to the vehicle and navigate to the control module 005F – Information Electronics 1.
2. Right-click on 005F and select Guided Functions.



3. Initiate the MIB 3 USB Update guided routine.

4. Follow all on-screen instructions referenced below to complete the update process.



Warranty

This is an information-only TPI. No warranty claim or accounting action is required.

Required Parts and Tools

Not applicable