

## Field campaign

<b>Topic</b>	Software Update   Window Short Drop Deletion   Continental GT/GTC   26MY (SC25 /31)
<b>Market area</b>	Bentley: worldwide (2WBE),China 796 VW Import Comp. Ltd (Vico), Beijing (6796)
<b>Brand</b>	Bentley
<b>Transaction No.</b>	2078277/14
<b>Campaign number</b>	ED59
<b>Note</b>	
<b>Type</b>	
<b>US code</b>	

## Vehicle data

### 26MY Continental GT / GTC

#### Sales types

Type	MY	Brand	Designation	Engine code	Gearbox code	Final drive code
Z23*	2026	E		*	*	*
Z24*	2026	E		*	*	*

## Documents

<b>Document name</b>
<a href="#">master.xml</a>
<a href="#">gt_glass_set_measurement_sheet.pdf</a>
<a href="#">gtc_glass_set_measurement_sheet.pdf</a>
<a href="#">v14sc2531vinlist.pdf</a>

ED59

Transaction No.: 2078277  
/14

Software Update | Window Short Drop Deletion | Continental GT/GTC | 26MY  
(SC25/31)

Release date: Oct 20, 2025

## Notes

▼ **Repair instructions**

## Technical background

### CAUTION

Please refer to all of the instructions within the Work section. The instructions MUST be followed in the exact order as detailed

## Remedy

All instructions within the Work section must be conducted as detailed

Software update is available for the left and right hand rear door control modules - Diagnostic address 00BB Driver side and 00BC Passenger side

The software eliminates the rear window short drop function

## Customer notification

Please ensure the software instructions within the Service campaign must be conducted at the nearest opportunity

## Warranty

Warranty type 710 or 790

Damage service number ED59

Damage code 00 66

Criterion ID 01

### Time to conduct the Software Version Management (SVM) update - Rear door control modules

Labour operation code 01 51 00 00

Time As per ODIS log Must not exceed 50 TU

### Time to conduct initial measurement checks Profile (Y-Axis) and Interlock (X-Axis)

Labour operation code 64 38 02 99

Time 15 TU

### CAUTION

**The labour codes below must only be claimed if the Profile (Y-Axis) and Interlock (X-Axis) were out of specification (before and / or after the software update was conducted)**

### Time to conduct the front glass adjustment procedure

Labour operation code 64 40 15 00

Time 140 TU (per side)

### Time to conduct the rear glass adjustment procedure

Labour operation code 64 75 15 00

Time 170 TU (per side)

### Water leak test

Labour operation code 64 38 01 99 (Use this code when conducting the water leak test)

Time 20 TU

### Additional Time Allowance

A 100TU allowance may be claimed only if a SVM update fails to complete successfully. This is intended to cover additional diagnostic or recovery work directly resulting from the failed update. It must not be used for unrelated delays or issues.

ODIS logs must be attached to a DISS ticket for evidence of failure. Claims without valid documentation will be rejected. Warranty Adjudicators will review associated ODIS logs and DISS queries to determine actual software update time.

## Parts

Not applicable

## Parts supply

### NOTICE

Should one or both of the measurements not be within specification the operative must refer to Rep.Gr 64 - Rear door drop glass - To adjust and conduct the front and rear glass adjustment procedure for the affected side left and / or right hand side to completion (all steps)

### NOTICE

Adjustment of all side glass requires the interior trim to be removed. Refer to "Rear quarter trim – To remove and fit". Rep. Gr. 70



To carry out the "Rear quarter trim – To remove and fit". Rep. Gr. 70 procedure, the following one-time-use parts must be replaced during the reinstallation:

N 989 244 01 x4 (Front seat belt slider bar fixing x2 each side)

N 989 244 01 x2 (Rear seat belt fixing x1 each side)

Refer to ETKA parts catalogue

## Parts despatch control

Not applicable

---

## Technical background

### CAUTION

Please refer to all of the instructions within the Work section. The instructions MUST be followed in the exact order as detailed

## Check

If the vehicle is not already listed as repaired in "Repair history" (in Elsa pro), check for the presence of the blue paint completion mark as shown within the Identification section

If neither are evident please conduct the instructions within the Work section to completion.

## Parts

Not applicable

## Work

### CAUTION

Ensure the vehicle is connected to a suitable 12V Lithium Ion battery charger before conducting any work

## Section 1 – Initial Glass Set Measurements

### NOTICE

Conduct initial glass set measurements and record the results in the model specific measurement document attached (see documents section). After completing the initial measurements, DO NOT make any adjustments until after the software update has been completed

### CAUTION

When completing the initial glass set measurements strictly adhere to the instructions in section 2



When completing measurements on Continental GTC models, complete a set of measurements with both the roof up and the roof down, as per the attached glass set measurement sheet

## Section 2 – Glass Set Measurement Instructions

### CAUTION

When completing the glass set measurement procedure, strictly adhere to the instructions below

If unsure about the measurement process follow the video on eAcademy or raise a full technical DISS query.

To eliminate confusion about the usage of WT10549/3 and the Y axis profile measurement between the front and rear windows and how to correctly read/enter the measurements in the tables, please refer to the below images to aid with accurate reading of the Y axis profile when using WT10549/3.

## Window Parallel

When the window is parallel take the 2mm step from the tool and minus the 2mm gap between front window and tool = -0mm (as shown in figure 1)

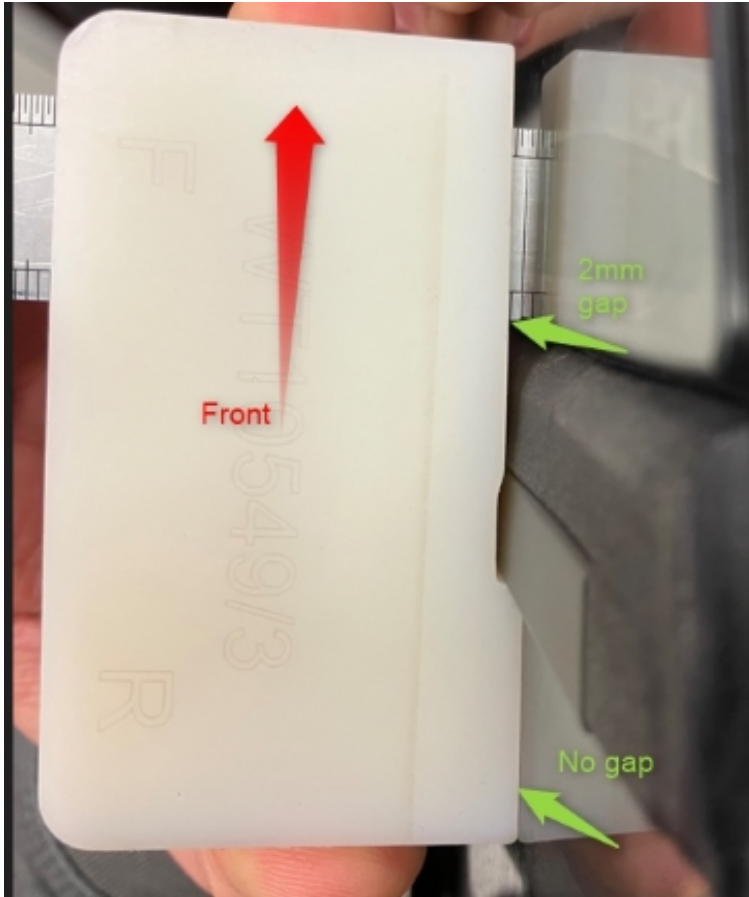


Figure 1

When the rear window is 0mm inboard from the front glass and the windows are parallel, the measurement written as 0mm (figure 2)

Profile (Y-Axis) Roof Down	Vehicle Position	Dimension -X-	Before adjustment
4 50mm from top of division bar	Front drop glass to rear quarter glass	+0 mm / - 2 mm	0mm

Figure 2

**Rear Window Inboard**

When the rear window is inboard and there is a 2mm step from the tool, when there is no gap between either window and tool (figure 3), the recorded measurement should be -2mm (figure 4)

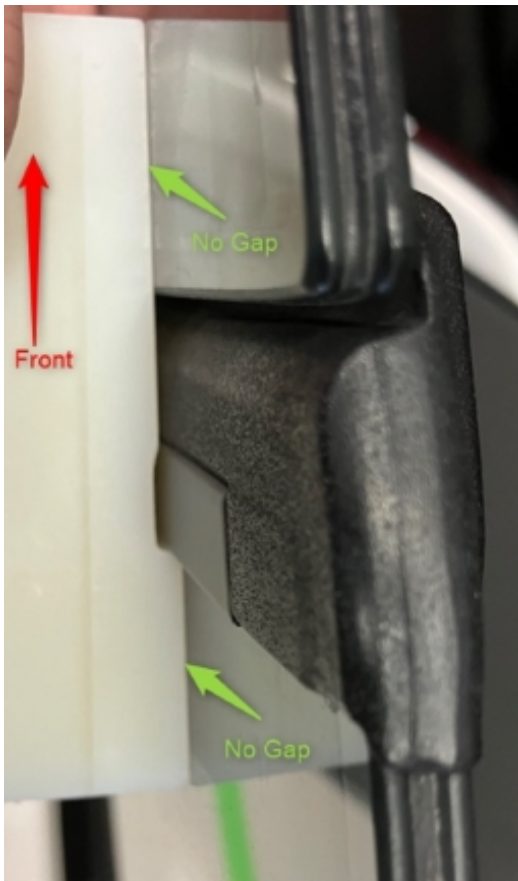


Figure 3

Profile (Y-Axis) Roof Down	Vehicle Position	Dimension -X-	Before adjustment
4 50mm from top of division bar	Front drop glass to rear quarter glass	+0 mm / - 2 mm	-2mm

Figure 4

**Rear Window Too Far Inboard**

When the rear window is inboard and there is a 2mm step from the tool as well as an additional 1.5mm gap to the window (figure 5), the recorded measurement should be -3.5mm (figure 6).

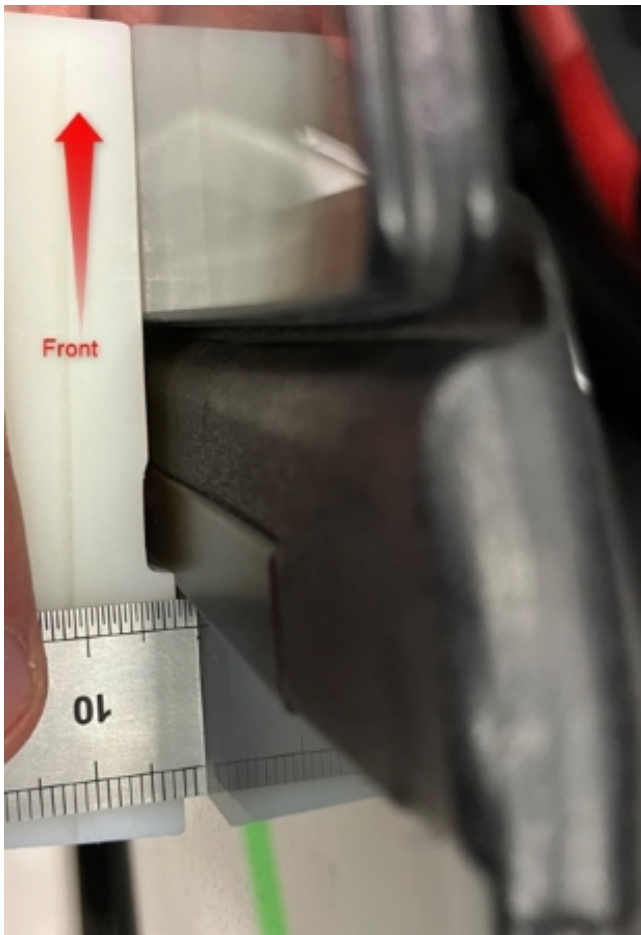


Figure 5

Profile (Y-Axis) Roof Down	Vehicle Position	Dimension -X-	Before adjustment
4 50mm from top of division bar	Front drop glass to rear quarter glass	+0 mm / - 2 mm	-3.5mm

Figure 6

If the tool (WT10549/3) does not sit flush against the rear window then this shows rear window is more than 2mm inboard (more than -2mm), check this by holding the tool on the front window and measuring gap between the rear glass and the tool (as shown in figure 7)

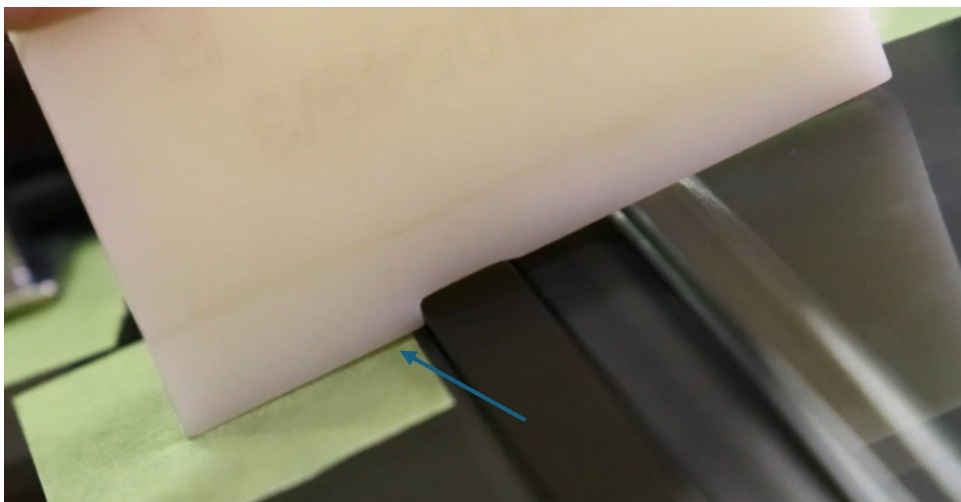


Figure 7

Further explanation can be found in the videos shown in Figure 8, which can be found on eAcademy Digital Learning Hub.

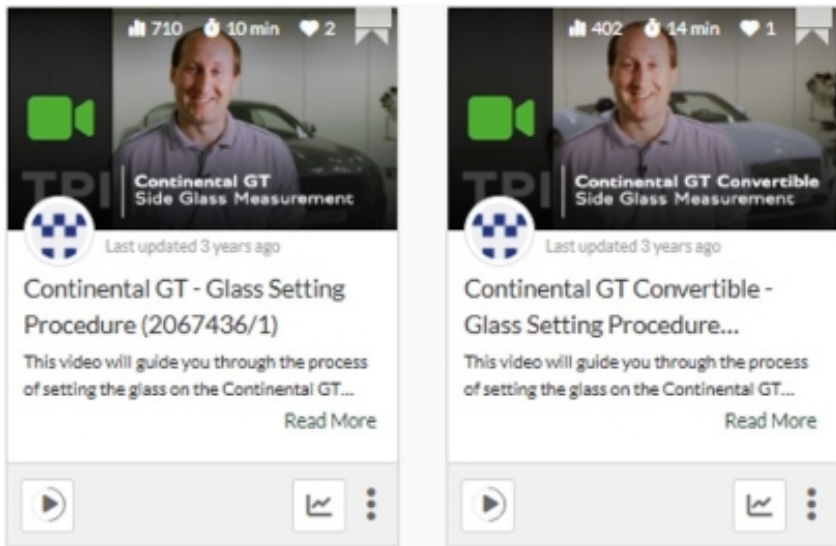


Figure 8

### Section 3 - Software update to the rear door control modules 00BB and 00BC - Short drop function elimination

**CAUTION**

**ONLY** Chargers that meet the approved specification on the Mandatory Equipment List (available on the Bentley Hub) **MUST** be used.

- The charger must be set to a mode where a **MINIMUM** of 90a is supplied to the battery during the process. Typically, this is known as 'Power Supply Mode' or 'DIAG+ Mode'.
- A voltage of exactly 14.8v must be set and maintained throughout the process.
- Please refer to the manual to ensure that these requirements are met before beginning any SVM update



The following software update eliminates the rear window short drop function

#### 1) Preparation before update

- Conduct a full guided fault find of the vehicle.



If a 'Check installation list' pop-up appears, select 'close' (Figure 9)



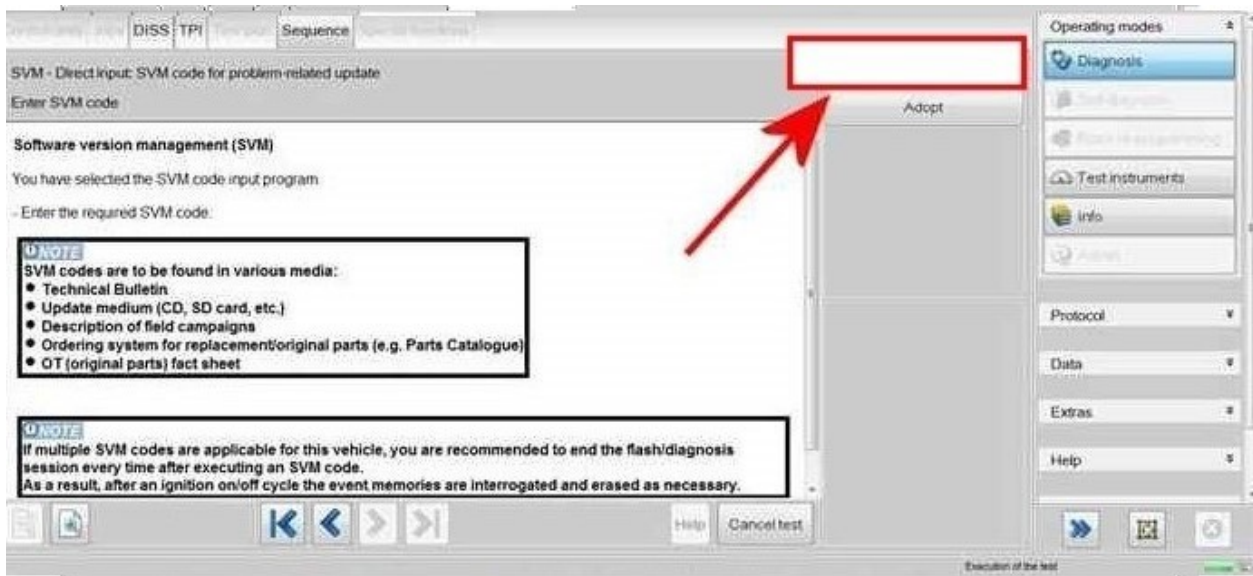


Figure 11

4) The control modules will automatically be updated one by one, starting with 00BB (Driver rear) and then 00BC (passenger rear)



Upon successful completion you will get a failure message of 8113 SVM Error

**NOTICE**

If you get any other error code, such as 8118, please refer to TPI 2078962

5) On completion open the doors and ensure that the rear windows no longer drop.

6) Switch off the ignition

- Remove the diagnostic interface from the OBD port
- Switch off and remove the battery charger from the vehicle
- Close the bonnet, boot and all doors
- Lock the vehicle
- Wait 5 minutes to allow the vehicle to go into bus silence
- When 5 minutes has elapsed, unlock the vehicle and open the driver's door
- Switch on the ignition

7) Once the software update has been conducted continue with the remaining instructions

**Hint:** The remaining instructions MUST be conducted regardless if adjustments were conducted or not

8) Referring to Rep.Gr 64 - Measure and record the points as detailed below on the left and right hand side Profile (Y-Axis) and Interlock (X-Axis).

**CAUTION**

Strictly adhere to the instructions in section 2 when completing the glass set measurements after the

software update has been completed.

Note: Should the measurements for the left and right hand side be within specification please go to step 11 and follow all remaining steps until completion

Or

 NOTICE

Should one or both of the measurements not be within specification the operative must refer to Rep.Gr 64 - Rear door drop glass - To adjust and conduct the front and rear glass adjustment procedure for the affected side left and / or right hand side to completion (all steps) and record a final measurement in the attached document

 CAUTION


All measurements must be recorded in the attached measurement documentation and saved as they will be required to be attached to a non-technical DISS query at the end of the procedure



**FAILURE TO ATTACH THE MEASUREMENTS TO THE DISS WILL RESULT IN NON PAYMENT OF THE WARRANTY CLAIM**

Note: Once the adjustment has been conducted please go to step 10 and follow all remaining steps until completion

9) VERY IMPORTANT - Referring to Rep.Gr 64 - Side glass - To initialise

 CAUTION

When conducting step 11 extra care must be taken to ensure the interior trim is suitably protected, any water which enters the vehicle due to a leak must be dried / cleaned immediately. Ensure all windows, sunroof and convertible roof (where applicable) are fully closed before conducting step 11

10) Conduct a water leak check to ensure that water is not leaking into the vehicles interior - Water leaks must be resolved before handing over the vehicle to the customer

11) Conduct the PDI road test to check for any wind noise related issues

 NOTICE

Should the vehicle fail the water leak check or a wind noise check, please raise a full technical DISS query

12) Upon successful completion of the PDI road test, raise a non-technical DISS query titled SC25/30 X and Y Axis measurement feedback ensuring the following is attached

- Online ODIS log
- A completed model specific measurement table

13) Referring to the Identification section - Apply a blue paint completion mark on the engine partition brace (Figure 12)

## Identification

Blue paint completion mark on the engine partition brace



Figure 12

---

▲ Repair instructions ▲ Notes

Side glass measurements GTC 25/26MY					
Interlock (Z-Axis)	Vehicle Position	Dimension -X-	Before SVM	After SVM	After adjustment (if required)
1 50 mm from division bar	Front quarter glass	7.5 mm ± 1 mm			
2 100 mm from division bar	Front of door drop glass	8.5 mm ± 1 mm			
3 50 mm from rear of door drop glass	Rear of door drop glass	8.5 mm ± 1 mm			
6 50 mm from rear drop glass division bar	Front of rear quarter glass	8.5 mm ± 1 mm			
7 100 mm from where the hood meets the brightware	Rear of rear quarter glass	10 — 16mm			
Interlock (X-Axis) Roof Up	Vehicle Position	Dimension -X-	Before SVM	After SVM	After adjustment (if required)
4 50 mm from the top of the window	Rear door quarter glass strip to front door drop glass edge	11 mm ± 1 mm			
5 50 mm from the waistrail seal	Rear door quarter glass strip to front door drop glass edge	11 mm ± 1 mm			
Interlock (X-Axis) Roof Down	Vehicle Position	Dimension -X-	Before SVM	After SVM	After adjustment (if required)
4 50 mm from the top of the window	Rear door quarter glass strip to front door drop glass edge	11 mm ± 1 mm			
5 50 mm from the waistrail seal	Rear door quarter glass strip to front door drop glass edge	11 mm ± 1 mm			
Profile (Y-Axis)	Vehicle Position	Dimension -X-	Before SVM	After SVM	After adjustment (if required)
1 50 mm from division bar	Front quarter glass	10 mm ± 1 mm			
2 100 mm from division bar	Front of door drop glass	14 mm ± 2 mm			
8 50mm forwards of rear of front drop glass (waist rail gap)	Rear of door drop glass	5mm ± 1mm			
9 50mm rearward of front of rear drop glass (waist rail gap)	Front of rear quarter glass	5mm ± 1mm			
Profile (Y-Axis) Roof Up	Vehicle Position	Dimension -X-	Before SVM	After SVM	After adjustment (if required)
4 50mm from top of division bar	Front drop glass to rear quarter glass	+0 mm / - 2.5 mm			
5 50mm from bottom of division bar	Front drop glass to rear quarter glass	+0 mm / - 2 mm			
Profile (Y-Axis) Roof Down	Vehicle Position	Dimension -X-	Before SVM	After SVM	After adjustment (if required)
4 50mm from top of division bar	Front drop glass to rear quarter glass	+0 mm / - 2.5 mm			
5 50mm from bottom of division bar	Front drop glass to rear quarter glass	+0 mm / - 2 mm			

Side glass measurements GT 25/26MY					
Interlock (Z-Axis)	Vehicle Position	Dimension -X-	Before SVM	After SVM	After adjustment (if required)
A 50 mm from division bar	Front quarter glass	7.5 mm $\pm$ 1 mm			
B 150 mm from division bar	Front of door drop glass	8 mm $\pm$ 1 mm			
C 50 mm from rear of door drop glass	Rear of door drop glass	8 mm $\pm$ 1 mm			
D 50 mm from rear drop glass division bar	Front of rear quarter glass	8 mm $\pm$ 1 mm			
E 50 mm from rearmost section of rear drop glass	Rear of rear quarter glass	8 mm $\pm$ 1 mm			
Interlock (X-Axis)	Vehicle Position	Dimension -X-	Before SVM	After SVM	After adjustment (if required)
4 50 mm from the top of the window	Rear door quarter glass strip to front door drop glass edge	11 mm $\pm$ 1 mm			
5 50 mm from the waistrail seal	Rear door quarter glass strip to front door drop glass edge	11 mm $\pm$ 1 mm			
Profile (Y-Axis)	Vehicle Position	Dimension -X-	Before SVM	After SVM	After adjustment (if required)
1 50 mm from division bar	Front quarter glass	10 mm $\pm$ 1 mm			
2 150 mm from division bar	Front of door drop glass	10 mm $\pm$ 2 mm			
3 50 mm from rear of door drop glass	Rear of door drop glass	10 mm $\pm$ 2 mm			
6 50 mm from rear drop glass division bar	Front of rear quarter glass	10 mm $\pm$ 2 mm			
7 50 mm from rearmost section of rear drop glass	Rear of rear quarter glass	10 mm $\pm$ 2 mm			
8 50mm forwards of rear of front drop glass (waist rail gap)	Rear of door drop glass	5mm $\pm$ 1mm			
9 50mm rearward of front of rear drop glass (waist rail gap)	Front of rear quarter glass	5mm $\pm$ 1mm			
Profile (Y-Axis)	Vehicle Position	Dimension -X-	Before SVM	After SVM	After adjustment (if required)
4 50mm from top of division bar	Front drop glass to rear quarter glass	+0 mm / - 2.5 mm			
5 50mm from bottom of division bar	Front drop glass to rear quarter glass	+0 mm / - 2 mm			

SCBCM13S0TC026835	SCBCP2ZG5TC026796	SCBCP2ZG0TC026723
SCBCM13S3TC026098	SCBCP2ZG8TC026744	SCBCP2ZG0TC026754
SCBCM13S5TC026832	SCBCP2ZG9TC026736	SCBCP2ZG4TC026739
SCBCM13S6TC026791	SCBCP2ZGXTTC026731	SCBCP2ZG5TC026720
SCBCM13S8TC026792	SCBCU13S1TC026780	SCBCP2ZG6TC026726
SCBCN13S1TC026274	SCBDM33S8TC026369	SCBCP2ZG8TC026758
SCBCN13S2TC026638	SCBDM3ZG5TC026722	SCBCR2ZG6TC025814
SCBCP2ZG2TC026805	SCBDP43S3TC026714	SCBCU13S2TC026318
SCBCP2ZG6TC026757	SCBDP4ZG2TC026755	SCBDJ33S9TC026017
SCBCP2ZG6TC026760	SCBDP4ZG5TC026765	SCBDM33S7TC026640
SCBCP2ZG6TC026824	SCBDP4ZG6TC026483	SCBDN33S7TC026666
SCBDM33S6TC026466	SCBDP4ZG7TC026735	SCBDP4ZG2TC026710
SCBDM33S9TC025960	SCBDP4ZG8TC026694	SCBDP4ZG2TC026741
SCBDP4ZG1TC026830	SCBDP4ZG8TC026775	SCBDP4ZG2TC026769
SCBDP4ZG2TC026772	SCBDP4ZGXTTC026745	SCBDP4ZG5TC026670
SCBDP4ZG5TC026779	SCBDR4ZG6TC026266	SCBDP4ZG7TC026282
SCBDP4ZG7TC026752	SCBDR4ZG9TC026620	SCBDP4ZG8TC026730
SCBDP4ZG7TC026802	SCBDR4ZGXTTC026738	SCBDP4ZG9TC026655
SCBDP4ZG9TC026784	SCBCJ13S6TC026332	SCBDP4ZGXTTC026647
SCBDP4ZGXTTC026504	SCBCM13S1TC026603	SCBDR4ZG1TC026725
SCBDR4ZG0TC026313	SCBCM13S3TC026733	SCBDR4ZG7TC026728
SCBDR4ZG7TC026762	SCBCM13S4TC026305	SCBCM13S2TC026562
SCBCD13S3TC026764	SCBCM13S4TC026742	SCBCM13S3TC026716
SCBCM13S3TC026795	SCBCM13S8TC026713	SCBCM13S6TC026645
SCBCN13S8TC026272	SCBCM13SXTTC026664	SCBCM13S7TC026704
SCBCN13S8TC026658	SCBCN13S2TC026610	SCBCM1ZG0TC026711
SCBCN13S9TC026524	SCBCN13S3TC025899	SCBCM1ZG6TC026616
SCBCN13S9TC026751	SCBCN13S7TC026697	SCBCN13S5TC026651
SCBCN13SXTTC026662	SCBCN1ZG2TC026657	SCBCN13S6TC026688
SCBCN13SXTTC026788	SCBCP2ZG0TC026611	SCBCN13S7TC025341
SCBCP2ZG0TC026768	SCBCP2ZG0TC026690	SCBCN13S7TC026683

SCBCP2ZG2TC026660	SCBCN13S8TC026675	SCBCM1ZG5TC026543
SCBCP2ZG5TC026717	SCBCP2ZG3TC026635	SCBCN13S1TC026193
SCBCP2ZG7TC026654	SCBCR2ZG1TC026126	SCBCN13S2TC026560
SCBCP2ZG7TC026685	SCBDM33S5TC025843	SCBCN13S3TC026454
SCBCU13S7TC026606	SCBDN33S0TC026492	SCBCP2ZG5TC026622
SCBDN33S2TC026641	SCBDP4ZG1TC026407	SCBCP2ZGXTTC026602
SCBDP4ZG0TC026687	SCBDP4ZG1TC026617	SCBCR2ZG7TC026521
SCBDP4ZG0TC026706	SCBDP4ZG2TC026674	SCBDB33S7TC026384
SCBDP4ZG1TC026682	SCBDP4ZG3TC026473	SCBDM33S9TC026333
SCBDP4ZG3TC026652	SCBDP4ZG5TC026586	SCBDM33SXTTC026597
SCBDP4ZG5TC026541	SCBDP4ZG5TC026605	SCBDN33S4TC026513
SCBDP4ZG5TC026703	SCBDP4ZG6TC026614	SCBDN33S4TC026558
SCBDP4ZG6TC026600	SCBDP4ZG8TC026632	SCBDN33S7TC026554
SCBDP4ZG6TC026659	SCBDP4ZG8TC026663	SCBDN33S8TC026403
SCBDR4ZG6TC026719	SCBDR4ZG4TC026296	SCBDN33S8TC026577
SCBDR4ZG7TC026678	SCBCM1ZG0TC026613	SCBDP4ZG0TC026527
SCBDR4ZG7TC026700	SCBCN13S5TC026598	SCBDP4ZG2TC026447
SCBCB13S0TC026680	SCBCN13S6TC026643	SCBDP4ZG4TC026109
SCBCM13S1TC026231	SCBCN13S8TC026515	SCBDP4ZG6TC025947
SCBCM13S1TC026519	SCBCP2ZG2TC026593	SCBDP4ZG7TC026573
SCBCM13S2TC026626	SCBCP2ZG9TC026557	SCBDP4ZG8TC026579
SCBCM13S3TC026618	SCBDM33S0TC026608	SCBDP4ZG8TC026582
SCBCM13S4TC026630	SCBDM33S6TC026595	SCBDR4ZG2TC026507
SCBCM13S5TC026555	SCBDM33S8TC026565	SCBCM13S2TC026464
SCBCM13S7TC026668	SCBDP4ZG6TC026516	SCBCM13S3TC026540
SCBCM13S8TC026677	SCBDP4ZG6TC026628	SCBCM13S4TC026546
SCBCN13S1TC026467	SCBDP4ZG7TC026637	SCBCN13S2TC026431
SCBCN13S2TC026588	SCBDR4ZG8TC026589	SCBCN13S8TC026532
SCBCN13S2TC026672	SCBCM13S2TC026576	SCBCN13S9TC026359
SCBCN13S4TC026043	SCBCM13S3TC026585	SCBCN13S9TC026538
SCBCN13S4TC026575	SCBCM13S6TC026578	SCBCP2ZG3TC026571

SCBCR2ZGXTC026500	SCBCP2ZG8TC026517	SCBDP4ZG7TC026489
SCBDN33S1TC026257	SCBDB33S7TC026238	SCBDR4ZG1TC026451
SCBDN33S7TC026358	SCBDM33S0TC026544	SCBCM13S6TC026449
SCBDP4ZG0TC026432	SCBDN33S4TC026530	SCBCR2ZG3TC026452
SCBDP4ZG0TC026477	SCBDP4ZG4TC026501	SCBCN13S7TC026389
SCBDP4ZG1TC026438	SCBDP4ZG5TC026510	SCBCN13S7TC026442
SCBDP4ZG1TC026455	SCBDP4ZG6TC026435	SCBDM33S7TC026377
SCBDP4ZG1TC026486	SCBDP4ZG8TC026534	SCBDM3ZG8TC026360
SCBDP4ZG2TC026495	SCBDP4ZGXTC026552	SCBDN33S2TC026462
SCBDP4ZG3TC026523	SCBDR4ZG8TC026480	SCBDR4ZG4TC026136
SCBDP4ZG7TC026430	SCBCM13S2TC026335	SCBCB13S7TC026367
SCBDP4ZG7TC026444	SCBCM13S3TC026375	SCBCJ13S3TC026417
SCBDP4ZG8TC026520	SCBCM13S4TC026434	SCBCN13S3TC026437
SCBDR4ZG5TC026548	SCBCM13S8TC026503	SCBCN13S3TC026440
SCBDR4ZG9TC026469	SCBCM13S9TC026459	SCBCN1ZG6TC026337
SCBCB13S8TC026457	SCBCM1ZG6TC026339	SCBCP2ZG5TC026295
SCBCH13S1TC025875	SCBCN13S1TC026484	SCBCP2ZG8TC026386
SCBCJ13S8TC026509	SCBCN13S8TC026482	SCBCR13S6TC026470
SCBCM13S0TC026494	SCBCN13S9TC026412	SCBDM33S9TC026414
SCBCM13S1TC026536	SCBCP2ZG1TC026018	SCBDM3ZG6TC026325
SCBCM13S2TC026478	SCBCP2ZG1TC026472	SCBDN33S4TC026382
SCBCM13S7TC026475	SCBCP2ZG5TC026491	SCBDP4ZG1TC026441
SCBCN13S2TC026512	SCBCP2ZG9TC026364	SCBDP4ZG2TC026416
SCBCN13S2TC026526	SCBCP2ZG9TC026400	SCBDP4ZG8TC026419
SCBCN13S7TC026506	SCBCR2ZG8TC026379	SCBCM13S1TC026424
SCBCN13S8TC026370	SCBCU13S7TC026461	SCBCM13S9TC026350
SCBCN13S8TC026465	SCBDB33S3TC026186	SCBCM13S9TC026428
SCBCN13S8TC026529	SCBDM33S0TC026303	SCBCM1ZG3TC026380
SCBCN13SXTTC026354	SCBDM33S7TC026251	SCBCN13S1TC026405
SCBCN13SXTTC026497	SCBDM33S8TC026498	SCBCP2ZG3TC026330
SCBCP2ZG6TC026306	SCBDN33S0TC026427	SCBCP2ZG4TC026420

SCBCP2ZG7TC026394	SCBCN13S7TC026327	SCBDP4ZG7TC026198
SCBDM33S0TC026401	SCBCN13S8TC026255	SCBDP4ZG7TC026248
SCBDM33S7TC025746	SCBCP2ZGXTTC026311	SCBDP4ZG8TC026288
SCBDN33S7TC025677	SCBCR2ZG3TC026323	SCBDP4ZG9TC026218
SCBDP4ZG1TC026343	SCBDH33S7TC025590	SCBDR4ZG3TC026340
SCBDP4ZG1TC026410	SCBDM33S4TC026353	SCBCB13S8TC026264
SCBDP4ZG3TC026425	SCBDM33S5TC026233	SCBCB13S9TC025589
SCBDP4ZG5TC026314	SCBDM33S9TC026235	SCBCB13SXTTC026153
SCBDR4ZG9TC026388	SCBDM33SXTTC026227	SCBCM13S1TC026293
SCBDR4ZG9TC026391	SCBDN33S4TC026320	SCBCM13S2TC026268
SCBDU33SXTTC026406	SCBDN3ZG9TC026042	SCBCM13S5TC026250
SCBCM13S8TC026341	SCBDP4ZG2TC026271	SCBCM13S9TC026283
SCBCM13S9TC026039	SCBDP4ZG7TC026329	SCBCM1ZG4TC026131
SCBCN13S7TC026280	SCBDP4ZGXTTC026356	SCBCN13S6TC025850
SCBCN13S9TC026409	SCBDR4ZG7TC026308	SCBCP2ZG2TC026142
SCBCN1ZG0TC026396	SCBDR4ZG9TC026262	SCBCP2ZG6TC026242
SCBCP2ZG3TC026392	SCBCB13S5TC025654	SCBCP2ZG6TC026287
SCBCR2ZG0TC026361	SCBCM13S2TC026030	SCBDM33S9TC026252
SCBCR2ZG7TC026289	SCBCM13S2TC026285	SCBCJ13S3TC026188
SCBDM33S8TC026209	SCBCM13S3TC026277	SCBCM13S2TC026206
SCBDN33S3TC026373	SCBCM13S4TC026322	SCBCM13SXTTC026163
SCBDN33S6TC026299	SCBCM13S7TC026007	SCBCN13S6TC026187
SCBDP4ZG4TC026336	SCBCN13S0TC026301	SCBCN1ZG7TC026234
SCBDP4ZG7TC026363	SCBCN13S1TC026260	SCBCP2ZG0TC026253
SCBDP4ZG8TC026291	SCBCP2ZG0TC026298	SCBCP2ZG1TC026181
SCBCJ13SXTTC026270	SCBCP2ZG3TC026246	SCBCP2ZG1TC026259
SCBCM13S0TC026351	SCBCR2ZG5TC026310	SCBCP2ZG2TC026240
SCBCM1ZG1TC025891	SCBDN33S9TC026278	SCBCP2ZG6TC026225
SCBCN13S0TC026346	SCBDP4ZG0TC026284	SCBCP2ZG8TC026243
SCBCN13S6TC026223	SCBDP4ZG1TC026245	SCBCR13S4TC025902
SCBCN13S7TC026117	SCBDP4ZG4TC026286	SCBCU13S1TC026228

SCBDM33S4TC026207	SCBDR4ZG1TC026112	SCBCM13S3TC026103
SCBDM3ZGXTTC026022	SCBDR4ZG6TC026171	SCBCM13S5TC025485
SCBDN33S2TC026168	SCBDR4ZG8TC026138	SCBCM13S5TC026135
SCBDN33S7TC026179	SCBDR4ZG9TC026164	SCBCM13S6TC025995
SCBDP4ZG3TC026151	SCBCB13S2TC025188	SCBCM13S7TC026055
SCBDP4ZG9TC026204	SCBCJ13S5TC026130	SCBCM13S8TC025903
SCBDP4ZGXTTC026230	SCBCM13S0TC026060	SCBCM13SXTTC025997
SCBCD13S7TC026184	SCBCM13S0TC026169	SCBCM13SXTTC026146
SCBCM13S0TC025586	SCBCM13S2TC026173	SCBCN13S7TC026019
SCBCM13S0TC026219	SCBCM13S3TC026148	SCBCN13S9TC026071
SCBCM13S5TC026149	SCBCM13S4TC026160	SCBCN1ZG0TC026124
SCBCM13S5TC026202	SCBCM13S4TC026174	SCBCP2ZG0TC025801
SCBCM1ZG1TC026216	SCBCM13S5TC026166	SCBCP2ZG9TC026087
SCBCM1ZGXTTC026201	SCBCN13S0TC025598	SCBCR2ZG5TC026114
SCBCN13S3TC026096	SCBCN13S1TC026162	SCBCU13S2TC026111
SCBCN13S5TC026195	SCBCN13S3TC026177	SCBCU13S7TC025942
SCBCN13S9TC026183	SCBCN13S8TC026157	SCBCU13S7TC026069
SCBCN13SXTTC026211	SCBCN1ZG0TC026172	SCBCU13S8TC026100
SCBCN1ZG8TC025951	SCBCP2ZG6TC026127	SCBDM33S6TC025771
SCBCP2ZG0TC025992	SCBCR13S4TC026144	SCBDM33S6TC026094
SCBCR2ZG6TC026199	SCBCR2ZG4TC026122	SCBDM33S7TC026038
SCBCR2ZG9TC026214	SCBCU13S2TC026139	SCBDP4ZG0TC026091
SCBCU13SXTTC026034	SCBCU13S9TC025750	SCBDP4ZG3TC026053
SCBDM33SXTTC026132	SCBDM33S4TC026059	SCBDP4ZG4TC025929
SCBDN33S2TC026221	SCBDP4ZG0TC026141	SCBDP4ZG4TC026031
SCBDN33S6TC026190	SCBDP4ZG3TC026036	SCBDP4ZG4TC026143
SCBDP4ZG5TC026118	SCBDP4ZG3TC026134	SCBDP4ZG5TC026040
SCBDP4ZG7TC025973	SCBDR4ZG5TC026159	SCBDP4ZG5TC026068
SCBDP4ZG8TC026047	SCBDR4ZG6TC026106	SCBDP4ZG9TC025327
SCBDP4ZG8TC026176	SCBDR4ZG8TC026155	SCBDP4ZGXTTC026129
SCBDP4ZGXTTC025580	SCBCM13S1TC026083	SCBCM1ZG6TC026115

SCBDP4ZGXTC026101	SCBCP2ZG9TC026090	SCBDP4ZG4TC025994
SCBCM13S0TC026088	SCBDM33S4TC026028	SCBDP4ZG8TC025870
SCBCM13S5TC026121	SCBDM33S8TC026064	SCBDR4ZG2TC025972
SCBCM13S7TC025584	SCBDP4ZG0TC025927	SCBDR4ZGXTC025878
SCBCN13S0TC026010	SCBDP4ZG4TC025722	SCBCC13S3TC025990
SCBCN13S6TC025931	SCBDP4ZG9TC026056	SCBCJ13S0TC025984
SCBCP2ZG0TC026012	SCBDP4ZGXTC026079	SCBCM13S4TC026000
SCBCP2ZG0TC026057	SCBDR4ZG7TC026020	SCBCM1ZGXTC025937
SCBCP2ZG2TC026108	SCBCB13S5TC025752	SCBCN13S4TC025958
SCBCP2ZG3TC026120	SCBCM13S2TC025976	SCBCN13S6TC025864
SCBDC33S9TC026013	SCBCM13S3TC025968	SCBCN13S6TC025945
SCBDM33S5TC026085	SCBCM13S6TC026046	SCBCN13S6TC025962
SCBDN33S8TC026076	SCBCM13S8TC026002	SCBCP2ZG7TC025794
SCBDP4ZG5TC025776	SCBCM13SXTTC025871	SCBCP2ZG9TC025957
SCBDP4ZGXTC026082	SCBCN13S0TC026024	SCBCR2ZG0TC025923
SCBDR4ZG5TC025920	SCBCN13S1TC025934	SCBCR2ZG9TC025872
SCBCM13S0TC026026	SCBCN13S1TC026033	SCBCU13S9TC025988
SCBCM13S1TC026066	SCBCN13S5TC026052	SCBDG33S9TC025559
SCBCM13S3TC025954	SCBCN13S7TC025839	SCBDM33S1TC025953
SCBCM13S4TC025977	SCBCP2ZG1TC026004	SCBDM33S5TC025924
SCBCM13S6TC026063	SCBCP2ZG5TC026037	SCBDN33S1TC025884
SCBCM13S6TC026080	SCBCP2ZG6TC025737	SCBDN33S4TC025622
SCBCN13S0TC026041	SCBCP2ZG6TC026015	SCBDN33S4TC025975
SCBCN13S0TC026072	SCBCP2ZG8TC026050	SCBDP4ZG1TC025936
SCBCN13S4TC026009	SCBCR2ZG5TC025979	SCBDP4ZG6TC026001
SCBCN13S5TC026049	SCBCR2ZGXTC026027	SCBDP4ZG7TC025682
SCBCN13S6TC026061	SCBCR2ZGXTC026044	SCBDP4ZGXTC025742
SCBCN1ZG6TC026077	SCBCU13S4TC025980	SCBDR4ZG0TC026005
SCBCP2ZG0TC026074	SCBDN33SXTTC025978	SCBDR4ZG8TC025944
SCBCP2ZG4TC026093	SCBDP4ZG3TC025999	SCBDR4ZG9TC025970
SCBCP2ZG5TC025986	SCBDP4ZG4TC025896	SCBCM13S0TC025894

SCBCM13S1TC025869	SCBDP4ZG6TC025950	SCBCN13SXTC025883
SCBCM13S1TC025919	SCBDP4ZG8TC025867	SCBCP2ZG4TC025820
SCBCM13S1TC025922	SCBDP4ZG8TC025917	SCBCP2ZG7TC025651
SCBCM13S6TC025866	SCBDP4ZGXTC025966	SCBCU13S8TC025898
SCBCM13S8TC025769	SCBDR43S1TC025815	SCBCU13S9TC025876
SCBCM13S9TC025716	SCBCH13S3TC025912	SCBDN33S2TC025845
SCBCM1ZG4TC025772	SCBCM13S0TC025748	SCBDP4ZG9TC025859
SCBCM1ZG7TC025880	SCBCM13S1TC025886	SCBDP4ZGXTC025904
SCBCN13S4TC025376	SCBCM13S3TC025906	SCBCB13S6TC025825
SCBCN13S5TC025905	SCBCM13S4TC025882	SCBCB13SXTC025813
SCBCN13S9TC025938	SCBCM13S6TC025821	SCBCM13S4TC025798
SCBCP2ZG0TC025913	SCBCM13S7TC025908	SCBCM13S5TC025602
SCBCP2ZG0TC025961	SCBCM1ZG2TC025706	SCBCM13S8TC025741
SCBCR2ZG1TC025834	SCBCM1ZG2TC025916	SCBCM13S9TC025067
SCBCR2ZG1TC025915	SCBCN13S4TC025930	SCBCM13SXTC025854
SCBCR2ZG3TC025835	SCBCP2ZG0TC025846	SCBCN13S3TC025840
SCBCR2ZG6TC025926	SCBCP2ZG4TC025848	SCBCN13S3TC025868
SCBCU13S5TC025955	SCBCP2ZG5TC025941	SCBCP2ZG4TC025851
SCBCU13S5TC025969	SCBCR2ZG6TC025909	SCBCP2ZG7TC025858
SCBCU13S6TC025785	SCBDN33SXTC025849	SCBCP2ZG7TC025861
SCBCU13S6TC025964	SCBDP4ZG2TC025587	SCBCP2ZG8TC025691
SCBCU13SXTC025949	SCBDP4ZG3TC025940	SCBCP2ZG8TC025805
SCBDB33S8TC025017	SCBDP4ZG4TC025767	SCBCP2ZG8TC025853
SCBDN33S0TC025732	SCBDP4ZG4TC025932	SCBCR2ZG2TC025857
SCBDN33S4TC025863	SCBCB13S2TC025806	SCBDM33S7TC025438
SCBDP4ZG2TC025833	SCBCB13S9TC025382	SCBDM33S8TC025822
SCBDP4ZG2TC025881	SCBCM13S4TC025817	SCBDM3ZG8TC025760
SCBDP4ZG2TC025900	SCBCM13S4TC025879	SCBDP4ZG2TC025718
SCBDP4ZG3TC025890	SCBCM13S7TC025505	SCBDP4ZG2TC025847
SCBDP4ZG5TC025874	SCBCN13S2TC025893	SCBDP4ZG3TC025856
SCBDP4ZG5TC025910	SCBCN13S9TC025888	SCBDP4ZG6TC025818

SCBDP4ZG8TC025836	SCBDP4ZG6TC025804	SCBDR4ZG9TC025788
SCBDR4ZG0TC025792	SCBCB13S1TC025778	SCBCB13S2TC025658
SCBDR4ZG8TC025782	SCBCB13S2TC025725	SCBCB13S8TC025695
SCBCB13S8TC025809	SCBCB13S6TC025758	SCBCM13S0TC025720
SCBCB13SXTTC025777	SCBCB13S6TC025761	SCBCM13S3TC025775
SCBCD13SXTTC025823	SCBCB13S8TC025762	SCBCM13S7TC025729
SCBCM13S3TC025744	SCBCM13S0TC025698	SCBCM1ZG4TC025755
SCBCM13S7TC025715	SCBCM13S1TC025709	SCBCM1ZGXTTC025646
SCBCM13S7TC025830	SCBCM13S1TC025757	SCBCN13S0TC025780
SCBCM13SXTTC025790	SCBCM13S3TC025808	SCBCN13S7TC025730
SCBCN13S0TC025844	SCBCM13S4TC025784	SCBCP2ZG6TC025673
SCBCN13S3TC025403	SCBCM13S8TC025738	SCBCP2ZG6TC025768
SCBCN13S5TC025676	SCBCM13S9TC025697	SCBDM33SXTTC025644
SCBCP2ZG0TC025605	SCBCN13S2TC025764	SCBDP4ZG2TC025699
SCBCP2ZG1TC025824	SCBCN13S2TC025781	SCBDP4ZG3TC025632
SCBCP2ZG3TC025842	SCBCN13S4TC025734	SCBDP4ZG5TC025714
SCBCP2ZG5TC025812	SCBCN13S5TC025726	SCBDP4ZG7TC025648
SCBCP2ZG7TC025827	SCBCN13S7TC025467	SCBDR4ZGXTTC025704
SCBCP2ZG9TC025831	SCBCN13S8TC025753	SCBCB13S0TC025612
SCBCP2ZGXTTC025787	SCBCP2ZG0TC025765	SCBCB13S1TC025702
SCBCR13S0TC025802	SCBCP2ZG1TC025774	SCBCB13S7TC025705
SCBCU13S2TC025797	SCBCP2ZG4TC025249	SCBCB13S9TC025690
SCBDC33S6TC025160	SCBCP2ZG5TC025745	SCBCC13S8TC025130
SCBDM33S0TC025796	SCBCU13S0TC025717	SCBCD13S4TC025686
SCBDM33S5TC025390	SCBCU13SXTTC025711	SCBCH13S1TC025701
SCBDM33S9TC025800	SCBDP4ZG1TC025693	SCBCM13S0TC025684
SCBDM3ZG8TC025838	SCBDP4ZG1TC025810	SCBCM13S6TC025723
SCBDN33S1TC025710	SCBDP4ZG4TC025445	SCBCM13S9TC025666
SCBDN33S3TC025756	SCBDP4ZG5TC025728	SCBCM13SXTTC025708
SCBDP4ZG0TC025829	SCBDP4ZG6TC025575	SCBCM1ZG3TC025679
SCBDP4ZG3TC025596	SCBDP4ZG8TC025688	SCBCN13S5TC025323

SCBCN13S8TC025364	SCBCU13S8TC025657	SCBCP2ZGXTC025627
SCBCN13SXTC025687	SCBDM33S3TC025663	SCBCU13S3TC025601
SCBCN13SXTC025740	SCBDM33S5TC025583	SCBCU13S4TC025624
SCBCP2ZG0TC025670	SCBDM33S8TC025609	SCBCU13S6TC025642
SCBCP2ZG1TC025712	SCBDN33S2TC025652	SCBDB33S9TC025396
SCBCP2ZG2TC025668	SCBDP4ZG0TC025636	SCBDM33S2TC025413
SCBCR2ZG1TC025719	SCBDP4ZG3TC025517	SCBDM33S8TC025593
SCBCU13S9TC025733	SCBDP4ZG6TC025656	SCBDM33SXTC025546
SCBDM33S4TC025672	SCBDP4ZGXTC025613	SCBDP4ZG0TC025538
SCBDN33S0TC024810	SCBCB13S0TC025366	SCBDP4ZG3TC025405
SCBDN33S2TC025599	SCBCB13S1TC025361	SCBDP4ZG6TC025639
SCBDP4ZG3TC025629	SCBCB13S2TC025529	SCBDP4ZG7TC025603
SCBDP4ZG4TC025736	SCBCB13S4TC025631	SCBDR4ZG1TC025607
SCBCB13S1TC025618	SCBCB13S5TC025556	SCBDR4ZG3TC025625
SCBCD13S7TC025620	SCBCB13S7TC025509	SCBCB13S3TC025457
SCBCJ13S7TC025643	SCBCB13S8TC025616	SCBCB13S4TC025595
SCBCM13S2TC025637	SCBCB13S9TC025334	SCBCB13S7TC025560
SCBCM1ZGXTC025680	SCBCM13S4TC025641	SCBCM13S1TC025564
SCBCN13S0TC025519	SCBCM13S5TC025650	SCBCM13S1TC025581
SCBCN13S9TC025664	SCBCM13SXTC025563	SCBCM13S2TC025203
SCBCP2ZG0TC025667	SCBCM13SXTC025630	SCBCM13S2TC025606
SCBCP2ZG3TC025694	SCBCM1ZG6TC025210	SCBCM13S3TC025579
SCBCP2ZG4TC025297	SCBCN13S1TC025626	SCBCM13S5TC025356
SCBCP2ZG4TC025462	SCBCN13S3TC025577	SCBCM13S7TC025567
SCBCP2ZG4TC025638	SCBCN13S7TC025615	SCBCM13S8TC025187
SCBCP2ZG6TC025494	SCBCN13S8TC025591	SCBCM13S8TC025576
SCBCP2ZG6TC025611	SCBCP2ZG5TC025647	SCBCN13S4TC025507
SCBCP2ZG8TC025660	SCBCP2ZG6TC025592	SCBCN13S7TC024433
SCBCP2ZGXTC025661	SCBCP2ZG6TC025608	SCBCN13S7TC025582
SCBCP2ZGXTC025675	SCBCP2ZG7TC025634	SCBCN13S9TC025552
SCBCU13S1TC025354	SCBCP2ZG9TC025585	SCBCN13S9TC025566

SCBCP2ZG2TC025525	SCBCB13S3TC025216	SCBCB13S6TC025498
SCBCP2ZG4TC025588	SCBCB13S9TC025530	SCBCD13S9TC025439
SCBCP2ZG5TC025597	SCBCH13S4TC025515	SCBCJ1ZG3TC025481
SCBCP2ZG6TC025561	SCBCJ13S1TC024780	SCBCM13S0TC025491
SCBCP2ZG7TC025553	SCBCN13S0TC025536	SCBCM13S2TC025511
SCBCP2ZGXTC025594	SCBCN13S6TC025475	SCBCM13S3TC025369
SCBCR2ZG1TC025557	SCBCN13S7TC025520	SCBCM13S3TC025453
SCBCR2ZG6TC025537	SCBCN13S9TC025311	SCBCM13S3TC025484
SCBCU13S9TC025540	SCBCP2ZG0TC025510	SCBCM13S5TC025454
SCBDM33S1TC025550	SCBCP2ZG1TC025337	SCBCM13S7TC025469
SCBDN33S6TC025508	SCBCP2ZG1TC025418	SCBCM1ZG4TC025478
SCBDN33S7TC025470	SCBCP2ZG1TC025516	SCBCN13S6TC025458
SCBDN33S9TC025292	SCBCP2ZG8TC025495	SCBCP2ZG4TC025476
SCBDP4ZG1TC025483	SCBCP2ZG9TC025473	SCBCP2ZG5TC025471
SCBDP4ZG4TC025574	SCBCU13S0TC025541	SCBCP2ZG9TC025487
SCBDP4ZG9TC025554	SCBCU13S4TC025512	SCBCP2ZGXTC025482
SCBDR4ZG2TC025499	SCBCU13S9TC024744	SCBCR2ZG7TC025501
SCBDR4ZG8TC025460	SCBDC33S6TC025496	SCBCU13SXTC025465
SCBCB13S0TC025545	SCBDM33S4TC025493	SCBDB33S9TC025253
SCBCB13S6TC025548	SCBDM33S6TC025527	SCBDM33S8TC025464
SCBCM13SXTC025451	SCBDN33S2TC025344	SCBDN33S0TC025455
SCBCN13S2TC025523	SCBDN33S7TC025503	SCBDN33S3TC025479
SCBCN13S5TC025533	SCBDP4ZG2TC025542	SCBDP4ZG6TC025401
SCBCN13SXTC025544	SCBDP4ZG5TC025521	SCBCB13S0TC025450
SCBCP2ZGXTC025532	SCBDR4ZG7TC025448	SCBCB13S2TC025420
SCBCU13S1TC025502	SCBDR4ZG8TC025426	SCBCB13S5TC025251
SCBCU13S5TC025504	SCBCB13S1TC025215	SCBCB13S9TC025379
SCBDM33S6TC025513	SCBCB13S2TC025417	SCBCC13S6TC025093
SCBDN33S7TC025534	SCBCB13S3TC025488	SCBCM13S0TC025443
SCBDP4ZG2TC025489	SCBCB13S5TC025346	SCBCM13S1TC024950
SCBCB13S0TC025433	SCBCB13S5TC025492	SCBCM13S6TC025415

SCBCM13S7TC025441	SCBCM13S7TC025388	SCBDP4ZG7TC025164
SCBCM13S8TC025352	SCBCM13SXTTC025269	SCBDP4ZG9TC025246
SCBCM1ZG6TC024610	SCBCM13SXTTC025305	SCBDP4ZGXTTC024932
SCBCM1ZG8TC025435	SCBCN13S0TC025150	SCBDP4ZGXTTC025322
SCBCP2ZG6TC025446	SCBCN13S0TC025391	SCBCB13S1TC025280
SCBCR2ZG2TC025437	SCBCN13S2TC025389	SCBCB13S7TC024988
SCBDM33S1TC025421	SCBCN13S2TC025411	SCBCB13S8TC025308
SCBDM33S7TC025407	SCBCN13S8TC025235	SCBCM13S7TC025228
SCBDM33S7TC025410	SCBCN13S9TC025177	SCBCM13S9TC025201
SCBDP4ZG3TC025288	SCBCN1ZG0TC025278	SCBCM13S9TC025263
SCBDP4ZG3TC025372	SCBCN1ZGXTTC025398	SCBCM13S9TC025294
SCBDP4ZG6TC025432	SCBCP2ZG1TC025399	SCBCM1ZG2TC025320
SCBDR4ZG1TC025381	SCBCR2ZG7TC025384	SCBCN13S4TC025247
SCBCB13S6TC025422	SCBDP4ZG5TC025339	SCBCN13S4TC025295
SCBCB13S7TC025414	SCBDP4ZGXTTC025367	SCBCN13S7TC025291
SCBCM13S0TC025233	SCBDR4ZG1TC025350	SCBCN13S9TC025325
SCBCM13S4TC025428	SCBDR4ZGXTTC025332	SCBCN13SXTTC024863
SCBCM13S7TC025424	SCBCB13S0TC025318	SCBCN13SXTTC025141
SCBCM13S9TC025408	SCBCB13S1TC025330	SCBCP2ZG3TC025310
SCBCN13S6TC025430	SCBCB13S5TC025315	SCBCP2ZG7TC025276
SCBCN13S8TC025395	SCBCD13S7TC025360	SCBCU13S3TC025243
SCBCP2ZG2TC025377	SCBCM13S2TC025301	SCBCU13S8TC025237
SCBDM33S9TC025375	SCBCM13S8TC025285	SCBDM33S2TC025265
SCBDN33S3TC024879	SCBCN13S1TC025299	SCBDM33S3TC025307
SCBDN33S4TC025362	SCBCN13S5TC025371	SCBDN33S9TC025115
SCBDN33SXTTC025091	SCBCN13SXTTC025348	SCBDN33SXTTC025284
SCBDR4ZG6TC025358	SCBCP2ZG5TC025373	SCBDP4ZG2TC025279
SCBCC13S7TC025393	SCBCP2ZG7TC025259	SCBDP4ZG6TC025205
SCBCM13S0TC025328	SCBCR2ZG2TC025342	SCBDP4ZG6TC025317
SCBCM13S3TC025386	SCBDP4ZG6TC025172	SCBDP4ZG8TC025268
SCBCM13S7TC025312	SCBDP4ZG6TC025219	SCBDP4ZG9TC025313

SCBDR4ZG0TC025033	SCBDN33S2TC024906	SCBDM33SXTC024946
SCBDR4ZG3TC025303	SCBDP4ZG0TC025250	SCBDN33S0TC025214
SCBCB13S4TC025287	SCBDP4ZG4TC025168	SCBDN33S2TC025179
SCBCB13S5TC025282	SCBDP4ZG5TC025261	SCBDP4ZG5TC025065
SCBCB13S6TC024822	SCBDP4ZG5TC025275	SCBDP4ZG7TC025052
SCBCB13S8TC025258	SCBDP4ZG8TC025044	SCBDP4ZG7TC025147
SCBCC13S6TC024977	SCBDP4ZG8TC025223	SCBCB13SXTTC025133
SCBCD13S7TC024922	SCBDR43S4TC025145	SCBCD13S6TC024944
SCBCG13S5TC024926	SCBDR4ZG0TC025212	SCBCM13S2TC025167
SCBCM13S4TC025218	SCBDR4ZG6TC025229	SCBCM13S4TC025171
SCBCM13S4TC025266	SCBDR4ZG7TC025241	SCBCM13S9TC025165
SCBCM13S8TC025254	SCBCM13S5TC025230	SCBCN13S0TC024967
SCBCM13SXTTC025031	SCBCM13S9TC025196	SCBCN13S0TC025181
SCBCM1ZG0TC024764	SCBCN13S1TC025125	SCBCN13S1TC025173
SCBCN13S2TC024646	SCBCN13S3TC024896	SCBCN13S4TC025006
SCBCN13S2TC024887	SCBCP2ZG0TC024843	SCBCN13S5TC024477
SCBCN13S4TC025152	SCBCR2ZG9TC025208	SCBCN13SXTTC025138
SCBCN13S4TC025264	SCBCU13S6TC025012	SCBCN13SXTTC025155
SCBCN13S5TC025256	SCBDM33S1TC025189	SCBCP2ZG9TC025148
SCBCN13SXTTC024619	SCBDM33S3TC025226	SCBCP2ZGXTTC025143
SCBCP2ZG1TC025225	SCBCB13SXTTC025245	SCBDB33SXTTC024581
SCBCP2ZG3TC025274	SCBCM13S1TC025192	SCBDM33S2TC025153
SCBCP2ZG4TC025039	SCBCM13S4TC025199	SCBDM33S8TC025013
SCBCR23S6TC025079	SCBCM13S4TC025204	SCBDN33S4TC024986
SCBCR23S9TC025206	SCBCM13S4TC025221	SCBDN33S9TC025194
SCBCR2ZG2TC025289	SCBCM13S9TC025120	SCBDP4ZG0TC025197
SCBCR2ZG7TC025191	SCBCN13S1TC025240	SCBDP4ZG6TC025186
SCBDM33S1TC025273	SCBCP2ZG2TC025184	SCBDR4ZG7TC024784
SCBDM33S4TC024652	SCBCP2ZG8TC024881	SCBCB13S3TC025135
SCBDN33S1TC025061	SCBCP2ZG9TC025232	SCBCB13S4TC025144
SCBDN33S1TC025271	SCBDM33S9TC025182	SCBCB13S8TC024983

SCBCD13S8TC023908	SCBCN13S3TC025126	SCBCB13S5TC025024
SCBCM13S2TC025086	SCBCN13S5TC024916	SCBCB13S6TC025016
SCBCM13S3TC025162	SCBCN13S7TC025081	SCBCB13S8TC024966
SCBCM13S7TC024824	SCBCN13S8TC024960	SCBCB13SXTC024919
SCBCM13S7TC025083	SCBCN13S9TC024921	SCBCB13SXTC024970
SCBCM13S7TC025116	SCBCP2ZG2TC025119	SCBCJ1ZG0TC024370
SCBCM13S9TC025103	SCBCP2ZG6TC025043	SCBCM13S3TC024979
SCBCM13SXTC025076	SCBCP2ZG9TC025036	SCBCM13S3TC024996
SCBCN13S7TC025128	SCBCR2ZG9TC025113	SCBCM13S5TC024465
SCBCN13SXTC025088	SCBDB33S5TC024763	SCBCM13S6TC025060
SCBCN1ZG9TC025070	SCBDG33S1TC024938	SCBCM13S7TC024936
SCBCP2ZG1TC025175	SCBDJ33SXTC025085	SCBCM13S9TC025005
SCBCP2ZG3TC025159	SCBDM33S0TC025099	SCBCM13SXTC025028
SCBCR2ZG6TC025053	SCBDM33S4TC024893	SCBCM1ZG2TC024992
SCBCU13SXTC025157	SCBDM33S6TC024958	SCBCM1ZG4TC024797
SCBDN33S0TC025021	SCBDN33S2TC024968	SCBCN13S1TC024573
SCBDN33S1TC025058	SCBDN33S4TC024759	SCBCN13S2TC024985
SCBDP4ZG0TC025037	SCBDN33S9TC024840	SCBCN13S3TC025045
SCBDP4ZG2TC025122	SCBDP4ZG0TC025068	SCBCN13S6TC024617
SCBDP4ZG3TC025095	SCBDP4ZG0TC025071	SCBCN13SXTC025026
SCBDR4ZG0TC025131	SCBDP4ZG0TC025118	SCBCP2ZG5TC025048
SCBDR4ZG1TC025137	SCBDP4ZG1TC025046	SCBCP2ZG6TC024703
SCBDR4ZG4TC025049	SCBDP4ZG2TC025041	SCBCP2ZG7TC025035
SCBCB13S4TC025001	SCBDR4ZG9TC025077	SCBCP2ZG9TC024307
SCBCB13S7TC025090	SCBDR4ZG9TC025080	SCBCR2ZG1TC025042
SCBCB13S8TC024952	SCBCP2ZG5TC025101	SCBCR2ZG3TC025057
SCBCJ13S1TC024858	SCBCP2ZG1TC025063	SCBDB33S5TC024889
SCBCM13S3TC024870	SCBCP2ZG4TC025073	SCBDM33S0TC024115
SCBCM13S7TC025097	SCBDM33S1TC025029	SCBDM33S3TC025002
SCBCM1ZG8TC024575	SCBDM33S4TC025025	SCBDM33S6TC024829
SCBCN13S0TC024760	SCBDP4ZG6TC025074	SCBDM33S6TC025009

SCBDM33S7TC024998	SCBDR4ZG2TC024885	SCBCN13S5TC024866
SCBDP4ZG2TC025055	SCBDR4ZG4TC024032	SCBCN13S6TC024956
SCBDP4ZG8TC024928	SCBCB13S0TC024878	SCBCN13S7TC024898
SCBDR4ZG4TC024192	SCBCB13S2TC024963	SCBDM33S1TC024334
SCBCB13S6TC024948	SCBCB13S7TC024912	SCBDM33S4TC024456
SCBCB13S8TC024918	SCBCB13S7TC025008	SCBDN33S0TC024872
SCBCB13S8TC025020	SCBCM13S0TC024874	SCBDN33S8TC024635
SCBCM13S1TC024883	SCBCM13S0TC024924	SCBDR4ZG3TC024121
SCBCM13S2TC025010	SCBCM13S2TC024908	SCBCB13S2TC024848
SCBCM13S3TC024965	SCBCM13S2TC024942	SCBCM13S0TC024891
SCBCM13S5TC025003	SCBCM13S4TC024974	SCBCR13S5TC024807
SCBCM13S7TC025004	SCBCM13S5TC024904	SCBCR2ZG8TC024812
SCBCM13S8TC024914	SCBCM13S6TC024961	SCBCU13S9TC024842
SCBCM13S9TC024954	SCBCN13S4TC024972	SCBDM33S8TC024251
SCBCM13S9TC025019	SCBCN13S5TC024821	SCBDP4ZG8TC024850
SCBCM1ZG7TC024700	SCBCN13S6TC024844	SCBDR4ZG8TC024860
SCBCN13S2TC024999	SCBCN13S8TC024876	SCBCB13S1TC024856
SCBCN13S2TC025022	SCBCU13S0TC024969	SCBCB13S3TC024728
SCBCN13S5TC024981	SCBCU13S1TC024902	SCBCB13SXTTC024757
SCBCP2ZG2TC024861	SCBCU13S8TC024766	SCBCD13S3TC024318
SCBCP2ZG8TC024931	SCBDM33S8TC024864	SCBCM13S0TC024390
SCBCR13SXTTC025015	SCBDN33S4TC024910	SCBCM13S5TC024871
SCBCR2ZG0TC024934	SCBCB13S0TC024900	SCBCM13S7TC024788
SCBCR2ZG7TC024929	SCBCB13S1TC024940	SCBCM1ZG4TC024735
SCBCR2ZGXTC024326	SCBCB13S5TC024682	SCBCM1ZG5TC024629
SCBCU13S8TC024587	SCBCM13S5TC024739	SCBCN13S0TC024709
SCBDM33S5TC024790	SCBCM13S6TC024698	SCBCN13S0TC024743
SCBDM33S6TC024975	SCBCM13S6TC024894	SCBCN13S6TC024827
SCBDN33S3TC024994	SCBCM1ZG4TC024637	SCBCN13SXTTC024684
SCBDN33S6TC024990	SCBCM1ZG7TC024695	SCBCN1ZG5TC024658
SCBDP4ZG3TC024755	SCBCM1ZG8TC024852	SCBCP2ZG1TC024799

SCBCR2ZG3TC024846	SCBCN13SXTC024376	SCBCJ13S6TC024712
SCBCR2ZG4TC024855	SCBCP2ZG4TC024716	SCBCM13S1TC024270
SCBCR2ZG9TC024673	SCBCP2ZG7TC024791	SCBCM13S1TC024768
SCBCU13S9TC024811	SCBCR2ZG2TC024305	SCBCM13S5TC024675
SCBDB33S8TC024868	SCBDM33S0TC024745	SCBCM13S5TC024756
SCBDP4ZG1TC024818	SCBDM33S4TC024621	SCBCM13S6TC024653
SCBDP4ZG2TC024794	SCBDN33S5TC024740	SCBCM13SXTTC024753
SCBDP4ZG3TC024769	SCBDP4ZG4TC024814	SCBCM1ZG4TC024671
SCBDP4ZG4TC024697	SCBCB13S4TC024804	SCBCM1ZG4TC024704
SCBDP4ZG4TC024778	SCBCB13S6TC024786	SCBCM1ZG7TC024664
SCBDP4ZG4TC024845	SCBCB13S9TC024779	SCBCM1ZG8TC024608
SCBDP4ZG5TC024806	SCBCM13S0TC024762	SCBCM1ZGXTTC024495
SCBDP4ZG5TC024854	SCBCM13S0TC024793	SCBCM1ZGXTTC024643
SCBDP4ZGXTTC024834	SCBCM13S2TC024777	SCBCN13S0TC024659
SCBCB13S0TC024816	SCBCM1ZG2TC024751	SCBCN13S9TC024773
SCBCB13S2TC024476	SCBCM1ZG5TC024730	SCBCP2ZG8TC024301
SCBCB13S4TC024835	SCBCM1ZG7TC024809	SCBCR13S1TC024710
SCBCB13S5TC024830	SCBCN13S5TC024253	SCBCR13S8TC024669
SCBCB13S8TC024837	SCBCN13SXTTC024720	SCBCU13S6TC024782
SCBCM13S0TC024714	SCBCN1ZG0TC024583	SCBCU13SXTTC024655
SCBCM13S1TC024687	SCBCP2ZG1TC024771	SCBDM33S0TC024597
SCBCM13S4TC024747	SCBCU13S4TC024795	SCBDM33S1TC024639
SCBCM13S9TC024825	SCBCU13S6TC024801	SCBDM33S4TC024666
SCBCM13S9TC024839	SCBCU13S9TC024775	SCBDM3ZG9TC024679
SCBCM13SXTTC024722	SCBDM33S0TC024602	SCBDN33S6TC024701
SCBCM1ZG2TC024832	SCBDM33S2TC024388	SCBDP4ZG4TC024473
SCBCM1ZG5TC024503	SCBDP4ZG1TC024012	SCBDP4ZG5TC024711
SCBCM1ZG5TC024677	SCBDP4ZG6TC024507	SCBDP4ZG7TC024726
SCBCM1ZGXTTC024819	SCBDP4ZG8TC024802	SCBDP4ZG8TC024749
SCBCN13S1TC024623	SCBDU33S2TC024732	SCBDU33S1TC024530
SCBCN13S4TC024163	SCBCD13S3TC024724	SCBCB13S2TC024526

SCBCB13SXTC024483	SCBDN33S9TC024627	SCBCB13S4TC024589
SCBCM13S3TC024187	SCBDN3ZG5TC024689	SCBCB13S7TC024425
SCBCM13S7TC024631	SCBDN3ZGXTTC024672	SCBCM13S5TC024613
SCBCM1ZG0TC024733	SCBDP4ZG9TC024615	SCBCM13S7TC024595
SCBCM1ZG2TC024510	SCBDR4ZG7TC024414	SCBCM1ZG2TC024605
SCBCP2ZG3TC024691	SCBDU33S1TC024656	SCBCM1ZG5TC024372
SCBCP2ZG6TC024667	SCBDU33S4TC024554	SCBCN13S0TC024628
SCBCR2ZG0TC024741	SCBCB13S4TC024592	SCBCN13S5TC023930
SCBCR2ZG9TC024737	SCBCB13S8TC024322	SCBCN13S8TC024568
SCBDM33S1TC024611	SCBCM13S2TC024603	SCBCN1ZG3TC024545
SCBDM33S7TC024693	SCBCM13S5TC024563	SCBCN1ZG4TC024604
SCBDM33S8TC024685	SCBCM13S5TC024644	SCBCP2ZG5TC024577
SCBDM3ZG8TC024480	SCBCM1ZG2TC024541	SCBCP2ZGXTTC024543
SCBDP4ZGXTTC024719	SCBCM1ZGXTTC024528	SCBCU13S2TC024620
SCBDR33S0TC024715	SCBCM1ZGXTTC024562	SCBCU13S5TC024594
SCBCB13S1TC024680	SCBCN13S4TC024650	SCBCU13S9TC024601
SCBCB13S4TC024625	SCBCP2ZG0TC024633	SCBDM33S2TC024018
SCBCM13S6TC024491	SCBCU13S1TC024558	SCBDN3ZG9TC024534
SCBCM13S9TC024209	SCBCU13S2TC024505	SCBDP4ZG6TC024572
SCBCM1ZG4TC024718	SCBCU13S4TC024571	SCBDP4ZG8TC024511
SCBCN13S5TC024706	SCBDM33S0TC024230	SCBCB13S1TC024579
SCBCN13S8TC024313	SCBDM33S1TC024124	SCBCB13S5TC024472
SCBCN13S8TC024599	SCBDM33S4TC024585	SCBCM13S5TC024532
SCBCR2ZG4TC024662	SCBDM33S9TC024548	SCBCM13S7TC024516
SCBCU13S0TC024616	SCBDN33S7TC024478	SCBCM1ZG3TC024533
SCBCU13S3TC024707	SCBDN33S7TC024660	SCBCN1ZG2TC024553
SCBCU13SXTTC024641	SCBDP4ZG8TC024590	SCBCP2ZG0TC024311
SCBDB33S6TC024321	SCBDP4ZG9TC024355	SCBDB33S3TC024258
SCBDM33S7TC024497	SCBDP4ZGXTTC024560	SCBDN33S6TC024570
SCBDM33S9TC024565	SCBDP4ZGXTTC024574	SCBDP4ZG4TC024540
SCBDM3ZG6TC024607	SCBDU33S2TC024648	SCBDR4ZGXTTC024567

SCBCM13S5TC024546	SCBDM33S8TC024363	SCBCM13S7TC024435
SCBCM13S6TC024538	SCBDN33S3TC024493	SCBCM1ZG5TC024419
SCBCM13SXTC024512	SCBDN33S4TC024504	SCBCN13S3TC024297
SCBCN13S1TC024508	SCBDN33SXTC024524	SCBCN13S4TC024406
SCBCN13S5TC024513	SCBDP4ZG0TC023966	SCBCN13S6TC024245
SCBCN13S9TC024353	SCBDP4ZG0TC024373	SCBCN13S9TC024448
SCBCP2ZG6TC024555	SCBDP4ZG1TC024429	SCBCN1ZG4TC024344
SCBCP2ZG9TC024551	SCBCB13S0TC024332	SCBCN1ZG9TC024436
SCBCR2ZG5TC024458	SCBCB13S1TC024467	SCBCP2ZG8TC024119
SCBCU13S0TC024499	SCBCB13S1TC024470	SCBCR2ZG4TC024399
SCBCU13S8TC024525	SCBCB13S5TC024455	SCBDB33S6TC024383
SCBCU13S8TC024556	SCBCB13S8TC024451	SCBDN33S5TC024446
SCBDN33S6TC024536	SCBCB13S9TC024460	SCBDN33S8TC024327
SCBDN33SXTC024569	SCBCM13S5TC024191	SCBDP4ZG0TC024437
SCBDP4ZG4TC024487	SCBCN13S7TC024481	SCBDP4ZG2TC024424
SCBDP4ZG5TC024501	SCBCN1ZG1TC024432	SCBDP4ZG5TC024000
SCBDR4ZG4TC024550	SCBCR2ZG0TC024271	SCBDP4ZG7TC024449
SCBDR4ZGXTC024522	SCBCR2ZG6TC024453	SCBCB13S2TC024395
SCBDU33S2TC024360	SCBDB33S5TC024309	SCBCB13S4TC024396
SCBCB13S4TC024463	SCBDM33S2TC024035	SCBCB13S6TC024402
SCBCG13S1TC024521	SCBDM33S6TC024443	SCBCB13SXTC024421
SCBCM13S0TC023983	SCBDM33SXTC024462	SCBCD13S8TC024427
SCBCM13S9TC024520	SCBDN33S4TC024454	SCBCM13S1TC024382
SCBCN13S0TC024404	SCBDN33S4TC024468	SCBCM13S3TC024416
SCBCN13S1TC024489	SCBDN33S4TC024485	SCBCM13S4TC024294
SCBCN13S9TC024515	SCBDR4ZG2TC024367	SCBCM13S4TC024361
SCBCN13SXTC024474	SCBDR4ZGXTC024441	SCBCM13S5TC024255
SCBCR2ZG6TC024484	SCBCB13S0TC024444	SCBCM13S5TC024269
SCBDM33S0TC024518	SCBCB13S7TC024411	SCBCM13SXTC024381
SCBDM33S3TC023749	SCBCB13S7TC024439	SCBCM13SXTC024431
SCBDM33S6TC024412	SCBCM13S7TC024046	SCBCN13S3TC024333

SCBCN13S5TC024298	SCBCN13S8TC024215	SCBCP2ZG4TC024280
SCBCN13S5TC024320	SCBCP2ZG7TC024287	SCBCP2ZG6TC024250
SCBCN13S5TC024379	SCBCP2ZG9TC024386	SCBCP2ZG6TC024314
SCBCN13S7TC024335	SCBDM33S1TC024155	SCBCP2ZGXTTC024218
SCBCR2ZG2TC024420	SCBDM33S1TC024365	SCBCR2ZG3TC024295
SCBDM33S4TC024392	SCBDP4ZG5TC024398	SCBCR2ZG5TC024203
SCBDM33S7TC024385	SCBCM13S0TC024356	SCBDM33S0TC024261
SCBDM33S7TC024418	SCBCM13S1TC024284	SCBDM33S3TC024240
SCBDM33S8TC024282	SCBCM13S1TC024348	SCBDM33S8TC024279
SCBDP4ZG1TC024303	SCBCM13S4TC024358	SCBDP4ZG5TC024286
SCBDP4ZG4TC024330	SCBCM13S7TC024368	SCBDP4ZG8TC024265
SCBDP4ZG4TC024408	SCBCM1ZGXTTC024156	SCBDR4ZG0TC024237
SCBDP4ZG9TC024422	SCBCN13S2TC024310	SCBDR4ZG4TC024323
SCBDR4ZG7TC024400	SCBCN13S4TC024342	SCBDR4ZG5TC023973
SCBCB13S2TC024364	SCBCP2ZG0TC024289	SCBCM13S3TC023783
SCBCJ1ZG7TC024351	SCBCP2ZG4TC024232	SCBCM13S4TC024263
SCBCM13S3TC024092	SCBDM33S4TC024182	SCBCM13S6TC024281
SCBCM13S7TC024337	SCBDM33S6TC024166	SCBCM13S7TC024239
SCBCN13SXTTC024409	SCBDM33S6TC024300	SCBCM13S9TC024257
SCBDM33SXTTC024378	SCBDM3ZG2TC024247	SCBCN13S0TC024080
SCBDN33S5TC024317	SCBDN33S3TC024204	SCBCN13S2TC024114
SCBCB13S0TC024346	SCBDN33S8TC024201	SCBCN13S2TC024243
SCBCB13S2TC024350	SCBDP4ZG0TC024325	SCBCN13S2TC024274
SCBCB13S5TC024133	SCBDP4ZG3TC024349	SCBCN13S3TC024235
SCBCB13S6TC024304	SCBDP4ZG9TC024338	SCBCN13S3TC024266
SCBCB13S7TC024375	SCBDR4ZG0TC024268	SCBCN13S9TC024224
SCBCG13S8TC024340	SCBCN13S1TC024315	SCBCP2ZG0TC024194
SCBCM13S5TC024210	SCBCN13S8TC024277	SCBCP2ZG1TC024107
SCBCM13SXTTC024090	SCBCN13S9TC024160	SCBCP2ZG3TC024206
SCBCN13S0TC024290	SCBCN1ZG6TC024328	SCBCP2ZG5TC024241
SCBCN13S4TC024292	SCBCP2ZG4TC024229	SCBCP2ZG8TC024248

SCBCP2ZG9TC024260	SCBDN33S0TC024158	SCBCN13S0TC024063
SCBCP2ZGXT024154	SCBDN33S7TC024223	SCBCN13S5TC024141
SCBDM33S8TC024170	SCBDP4ZG0TC024244	SCBCN13S7TC024089
SCBDM33S9TC024226	SCBDP4ZG1TC024057	SCBCP2ZG0TC024146
SCBDN33S4TC024275	SCBDP4ZG5TC024059	SCBCP2ZG4TC024151
SCBDN33S5TC024219	SCBDP4ZG5TC024076	SCBCP2ZG6TC024054
SCBDN33S7TC024254	SCBDP4ZG6TC024233	SCBCR2ZG9TC024110
SCBDP4ZG4TC024196	SCBDR4ZG7TC024140	SCBDM33S9TC024131
SCBDP4ZG5TC024272	SCBCM13S2TC024181	SCBDN33SXT024118
SCBDP4ZG6TC024152	SCBCM13S7TC024130	SCBDP4ZG4TC024098
SCBDP4ZG7TC024189	SCBCM13S9TC024176	SCBCM13S0TC024079
SCBDP4ZGXT024185	SCBCM13SXT024087	SCBCM13S1TC024088
SCBDR4ZG2TC024045	SCBCM13SXT024137	SCBCM13S2TC024052
SCBCM13S0TC024227	SCBCN13S4TC024180	SCBCM13S2TC024116
SCBCM13S1TC024236	SCBCN13S5TC024172	SCBCM13S3TC023959
SCBCM13S2TC024228	SCBCN13S6TC024097	SCBCM13S4TC024036
SCBCM13S3TC024190	SCBCP2ZG5TC024143	SCBCM13S7TC023964
SCBCM13S8TC024167	SCBCP2ZGXT024123	SCBCM13S7TC023981
SCBCM13SXT024171	SCBCP2ZGXT024199	SCBCM13S9TC023884
SCBCM13SXT024221	SCBCR2ZG8TC024177	SCBCM13S9TC023951
SCBCN13S1TC024184	SCBDN33S0TC024175	SCBCM13S9TC024128
SCBCN13S4TC024213	SCBDP4ZG6TC024216	SCBCN13S1TC024105
SCBCN13SXT024197	SCBDP4ZG9TC023707	SCBCN13S2TC024100
SCBCP2ZG0TC023921	SCBCM13S0TC024096	SCBCN13S2TC024145
SCBCR2ZG8TC023949	SCBCM13S2TC023824	SCBCP2ZG8TC024072
SCBDM33S2TC024178	SCBCM13S2TC024150	SCBCP2ZGXT024008
SCBDM33S5TC024207	SCBCM13S3TC024111	SCBCR2ZG2TC024126
SCBDM33S7TC024144	SCBCM13S3TC024173	SCBDM33S3TC024027
SCBDM33S7TC024161	SCBCM13S6TC023860	SCBDM33S5TC024109
SCBDM33S9TC024212	SCBCM13S7TC023866	SCBDM33S6TC024104
SCBDM33SXT024168	SCBCM13S7TC024113	SCBDM33S9TC024078

SCBDN33S4TC024082	SCBDP4ZG8TC023942	SCBCM13S8TC023827
SCBDP4ZG0TC024101	SCBDP4ZG9TC024050	SCBCM13S8TC023939
SCBDP4ZG4TC024148	SCBDR4ZG8TC024065	SCBCN13S6TC024021
SCBDP4ZG6TC024068	SCBCM13S6TC023969	SCBCP2ZG4TC024019
SCBDP4ZG6TC024135	SCBCM13S6TC024023	SCBCP2ZG7TC023835
SCBDP4ZG7TC024127	SCBCM13S7TC023897	SCBCP2ZG8TC024041
SCBDR4ZG9TC024091	SCBCM13SXTTC024011	SCBDM33S0TC023840
SCBCM13S4TC023971	SCBCM13SXTTC024042	SCBDP4ZG2TC024004
SCBCM13S7TC024029	SCBCN13S3TC024073	SCBDP4ZG5TC023946
SCBCM13SXTTC024056	SCBCN13S5TC024009	SCBDP4ZG9TC023867
SCBCN13S0TC023995	SCBCP2ZG0TC024034	SCBDR4ZG6TC023996
SCBCN13S0TC024094	SCBCP2ZG1TC024060	SCBCM13S0TC023997
SCBCN13S2TC023979	SCBCP2ZG3TC023976	SCBCM13S2TC023872
SCBCN13S6TC024066	SCBCP2ZG3TC024075	SCBCM13S4TC023999
SCBCN13S8TC024005	SCBCR2ZG0TC024044	SCBCM13S8TC023889
SCBCN13S8TC024103	SCBCR2ZG7TC024039	SCBCM13S9TC024002
SCBCN13SXTTC024085	SCBDM33S7TC023883	SCBCN13S0TC023947
SCBCP2ZG0TC023711	SCBDN33S3TC023859	SCBCN13S3TC023957
SCBCP2ZG5TC023798	SCBDN33S7TC024030	SCBCN13S3TC023991
SCBCP2ZG5TC024031	SCBDN33S8TC024053	SCBCN13S4TC023904
SCBCP2ZG8TC024069	SCBDP4ZG2TC023984	SCBCN13S5TC023913
SCBCP2ZG8TC024122	SCBDP4ZG5TC023719	SCBCN13S7TC023900
SCBCP2ZG9TC024016	SCBDP4ZG5TC023977	SCBCN13SXTTC023986
SCBCP2ZGXTTC024025	SCBDP4ZG5TC024014	SCBCP2ZG1TC023989
SCBDM33S2TC023970	SCBDP4ZG6TC024006	SCBCP2ZG7TC023916
SCBDM33S3TC024061	SCBDP4ZG6TC024037	SCBCR2ZG9TC023927
SCBDM33S9TC023786	SCBDP4ZG6TC024040	SCBDM33S6TC023714
SCBDN33S6TC023905	SCBDP4ZG8TC023987	SCBDP4ZG4TC023811
SCBDP4ZG3TC023993	SCBDP4ZG8TC024024	SCBDP4ZG4TC023940
SCBDP4ZG4TC024070	SCBDP4ZG9TC024047	SCBDP4ZG5TC023980
SCBDP4ZG5TC024112	SCBDR4ZG4TC023771	SCBDP4ZG7TC023902

SCBDP4ZG7TC023950	SCBCP2ZG8TC023911	SCBDR4ZG5TC023746
SCBDP4ZGXTC023845	SCBCP2ZG9TC023822	SCBCN13S5TC023720
SCBDR4ZG2TC023932	SCBCR2ZG5TC023892	SCBCR2ZG0TC023895
SCBCM13S1TC023961	SCBDJ33S9TC023909	SCBDM33S2TC023774
SCBCM13S2TC023953	SCBDM33S2TC023886	SCBCM13S0TC023854
SCBCN13S5TC023829	SCBDM33S9TC023805	SCBCM13S1TC023751
SCBCN13S9TC023879	SCBDN33S6TC023838	SCBCM13SXTC023831
SCBCP2ZG1TC023846	SCBDP4ZG0TC023935	SCBCP2ZG0TC023806
SCBCP2ZG2TC023967	SCBDP4ZG3TC023802	SCBCP2ZG0TC023837
SCBCP2ZG3TC023864	SCBCM13S2TC023922	SCBCP2ZG0TC023868
SCBCP2ZG3TC023945	SCBCM13S5TC023901	SCBCP2ZG1TC023698
SCBCP2ZG3TC023962	SCBCM13S6TC023907	SCBCP2ZG1TC023801
SCBCP2ZG5TC023820	SCBCP2ZG2TC023760	SCBCP2ZG5TC023834
SCBCP2ZG6TC023941	SCBCP2ZG3TC023914	SCBCP2ZG7TC023754
SCBCP2ZG8TC023925	SCBCP2ZG4TC023887	SCBCP2ZG8TC023813
SCBCP2ZGXTC023974	SCBCP2ZG6TC023874	SCBCR2ZG2TC023803
SCBDM33S4TC023937	SCBCP2ZG7TC023933	SCBCR2ZG3TC023812
SCBDM33S6TC023955	SCBCR2ZG2TC023882	SCBCR2ZG9TC023796
SCBDM33S9TC023920	SCBCR2ZG9TC023779	SCBDM33S1TC023815
SCBDN33S9TC023963	SCBDM33S2TC023855	SCBDM33S9TC023870
SCBDP4ZG1TC023944	SCBDM33S9TC023836	SCBDM33SXTC023697
SCBDP4ZG3TC023928	SCBDM33S9TC023898	SCBDP4ZG1TC023880
SCBDP4ZG9TC023917	SCBDN33S0TC023799	SCBDP4ZG3TC023850
SCBDR4ZG1TC023873	SCBDP4ZG4TC023923	SCBDP4ZG4TC023808
SCBDR4ZG7TC023876	SCBDP4ZG5TC023896	SCBDP4ZG4TC023825
SCBCM13S1TC023877	SCBDP4ZG8TC023777	SCBDP4ZG5TC023722
SCBCM13S5TC023851	SCBDP4ZGXTC023862	SCBDP4ZG6TC023843
SCBCN13S6TC023791	SCBDP4ZGXTC023893	SCBDP4ZG7TC023821
SCBCP2ZG2TC023919	SCBDP4ZGXTC023912	SCBDP4ZGXTC023795
SCBCP2ZG2TC023936	SCBDP4ZGXTC023926	SCBDP4ZGXTC023828
SCBCP2ZG6TC023938	SCBDR4ZG1TC023890	SCBDR4ZG0TC023833

SCBCM13S3TC023699	SCBCP2ZGXTC023764
SCBCM13S4TC023842	SCBCP2ZGXTC023778
SCBCM13S6TC023857	SCBCR2ZG0TC023718
SCBCN13S7TC023816	SCBCR2ZG1TC023775
SCBCN13S9TC023848	SCBCR2ZG3TC023695
SCBCP2ZG2TC023788	SCBCR2ZG3TC023745
SCBCP2ZG6TC023762	SCBCR2ZG6TC023738
SCBCP2ZG8TC023794	SCBCR2ZG7TC023702
SCBCP2ZG9TC023769	SCBCR2ZG8TC023692
SCBDM33S4TC023792	SCBCR2ZGXTC023709
SCBDM33SXTTC023747	SCBDM33S0TC023742
SCBDP4ZG1TC023703	SCBDM33S4TC023789
SCBDP4ZG1TC023765	SCBDM33S9TC023691
SCBDP4ZG3TC023735	SCBDN33S1TC023780
SCBDP4ZG6TC023759	SCBDN33S7TC023752
SCBDP4ZGXTTC023733	SCBDP4ZG2TC023726
SCBDR4ZG4TC023818	SCBDP4ZG6TC023700
SCBCM13S5TC023767	SCBDP4ZG8TC023729
SCBCM13S6TC023809	SCBDR4ZG1TC023694
SCBCM13S7TC023785	SCBDR4ZG7TC023716
SCBCM13S9TC023772	SCBCM13S1TC023734
SCBCN13S1TC023732	SCBCM13S6TC023731
SCBCN13S3TC023781	SCBCM13S9TC023741
SCBCN13S9TC023817	SCBCN13S4TC023708
SCBCP2ZG2TC023743	SCBDP4ZG9TC023495
SCBCP2ZG2TC023757	SCBCN13S4TC023725
SCBCP2ZG3TC023704	SCBCN13S5TC023748
SCBCP2ZG5TC023736	SCBCN13S8TC023727
SCBCP2ZG7TC023690	SCBDM33S2TC023712
SCBCP2ZG7TC023706	SCBDN33S4TC023739
SCBCP2ZG7TC023723	SCBDM33S5TC023493