



# TECHNICAL SERVICE BULLETIN

Classification: EL25-001A	Reference: NTB25-030A	Date: October 1, 2025
------------------------------	--------------------------	--------------------------

## STEERING WHEEL SWITCH BUTTONS INOPERATIVE, STICKING, OR NOT CLICKING WHEN PRESSED

This bulletin has been amended. See **AMENDMENT HISTORY** on the last page.  
Please discard previous versions of this bulletin.

**APPLIED VEHICLES:** 2022-2025 Pathfinder (R53)  
2021-2025 Rogue (T33)

**APPLIED DATES:** Pathfinder: Built on or before March 19, 2025  
Rogue:  
VINs starting with 5N1 - built on or before May 13, 2025  
VINs starting with JN8 - built on or before November 27, 2024

### IF YOU CONFIRM

The customer states that any of the steering wheel switch buttons are inoperative, sticking, or not clicking when pressed.

### ACTION

Follow the **SERVICE PROCEDURE** to:

1. Remove the steering wheel assembly.
2. Replace the switch assembly on the steering wheel assembly.

**HINT:** The switch assembly includes switches for both sides of the steering wheel.

3. Reinstall the steering wheel assembly.

**IMPORTANT:** The purpose of **ACTION** (above) is to give you a quick idea of the work you will be performing. You **MUST** closely follow the entire **SERVICE PROCEDURE** as it contains information that is essential to successfully completing this repair.

Bulletins are intended for use by qualified technicians, not 'do-it-yourselfers'. Qualified technicians are properly trained individuals who have the equipment, tools, safety instruction, and know-how to do a job properly and safely. **NOTE:** If you believe that a described condition may apply to a particular vehicle, **DO NOT** assume that it does. See your Nissan dealer to determine if this applies to your vehicle.

## SERVICE PROCEDURE

### **⚠ WARNING** **⚠ CAUTION** **NOTICE**

To avoid severe personal injury or death, follow all cautions, warnings, and notes in the ESM when working on or near a Supplemental Restraint System (SRS), such as an air bag.

- Refer to the ESM: **RESTRAINTS > SRS AIR BAG > REMOVAL AND INSTALLATION > DRIVER AIR BAG MODULE > Removal and Installation**

1. Prepare the tools, as shown in Figure 1.

- The Putty knife blade must have an appropriate width and rigidity. A Putty knife blade equivalent to TRUSCO TS-211 is recommended.
- The recommended Putty knife blade width = 50 mm (**2.0 in**) and blade thickness = 1.1 mm (**0.04 in**).



Figure 1

2. Remove the steering wheel assembly.

- Refer to the ESM: **STEERING > STEERING SYSTEM > REMOVAL AND INSTALLATION > STEERING WHEEL > Removal and Installation**

3. Apply Cloth tape to the Putty knife blade tip (both sides), as shown in Figure 2.

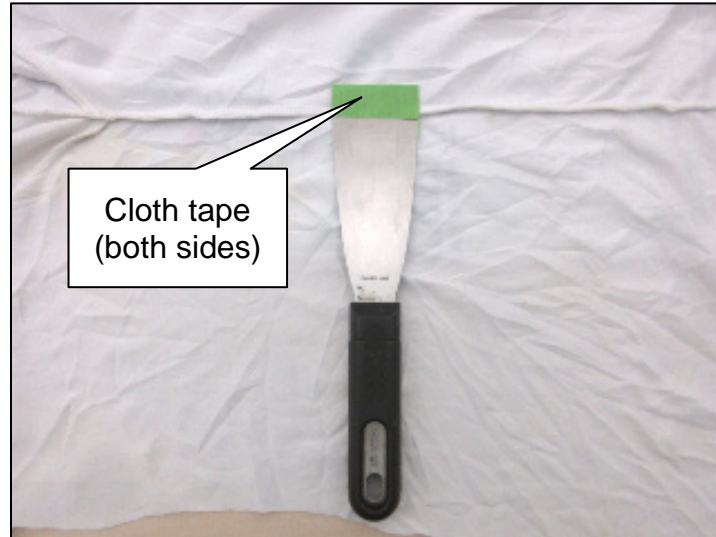


Figure 2

4. Place the steering wheel on a clean shop rag on a work bench to prevent damage to the steering wheel and apply Cloth tape to the finishers, as shown in Figure 3.

**HINT:** The Cloth tape is applied to protect the steering wheel finisher from damage.

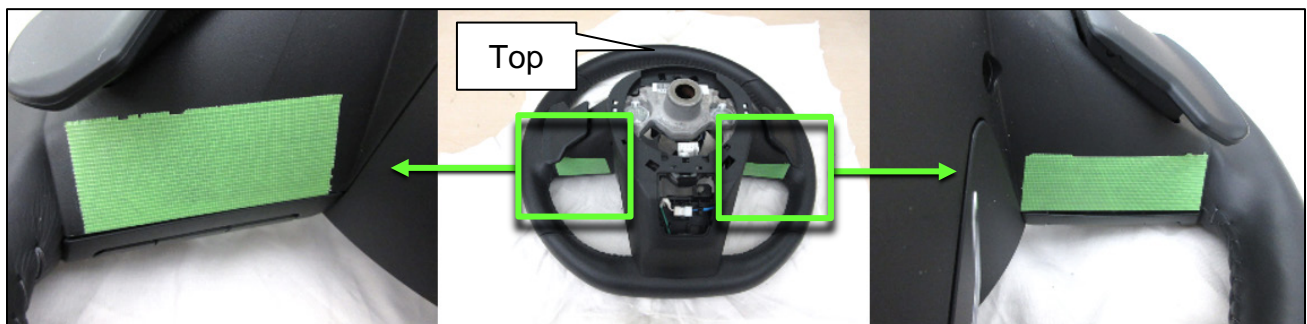


Figure 3

5. Insert the Putty knife blade into the gap between the switch and the finisher, as shown in Figure 4.



Figure 4

6. Hold the Putty knife vertically with the tip perpendicular to the bench and remove the switch by gently tapping the Putty knife with a Hammer from the back side, as shown in Figure 5. Repeat this step to remove the switch on the opposite side.



Figure 5

7. From the front side of the steering wheel, press the connector locking tab with the Slotted screwdriver to remove the switch connector, as shown in Figure 6.

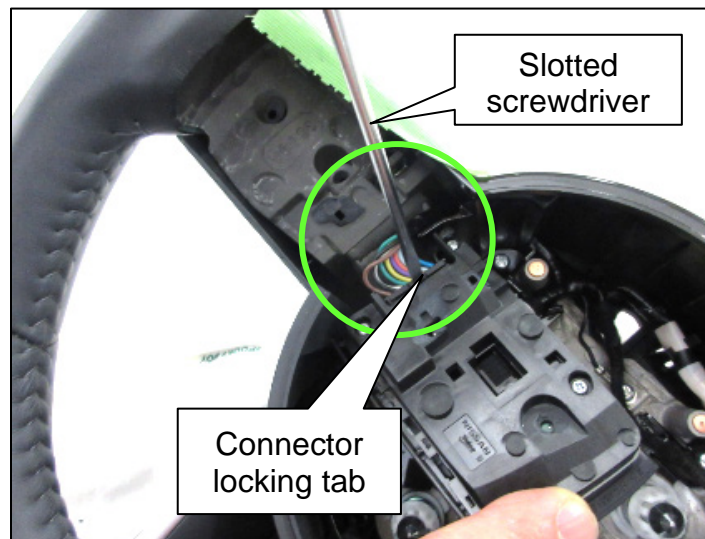


Figure 6

- Using the #2 Cross-head screwdriver, remove the one (1) Paddle shifter retaining screw from the front side of the steering wheel, as shown in Figure 7.

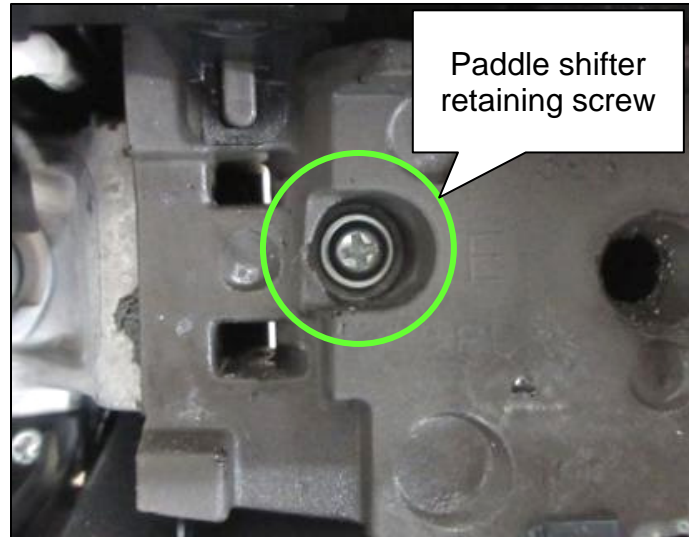


Figure 7

- After removing the paddle shifter, cover the three (3) holes of the steering wheel with Cloth tape on the back side, as shown in Figure 8 and Figure 9. Repeat this step for the opposite side paddle shifter.

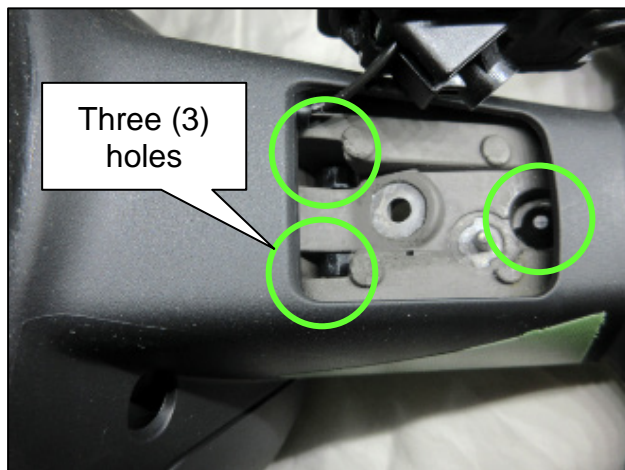


Figure 8



Figure 9

10. From the front side of the steering wheel, remove the plastic burrs from the steering wheel switch pins with a pair of Side cutters at three (3) locations, as shown in Figure 10 and Figure 11. Repeat this step for the opposite side switch.

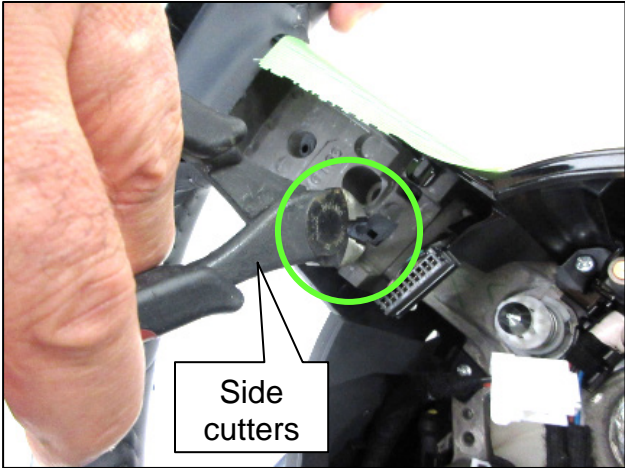


Figure 10

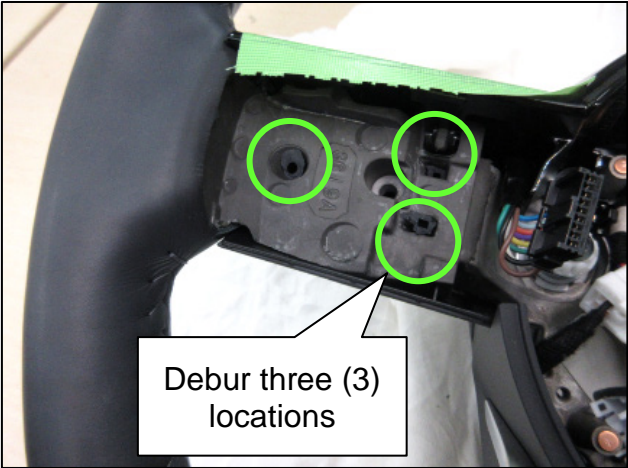


Figure 11

11. From the top side, push the plastic pins in with the Slotted screwdriver at the three (3) locations, as shown in Figure 12 and Figure 13 to drop the pins into the back of the switch. Repeat this step for the opposite side switch.

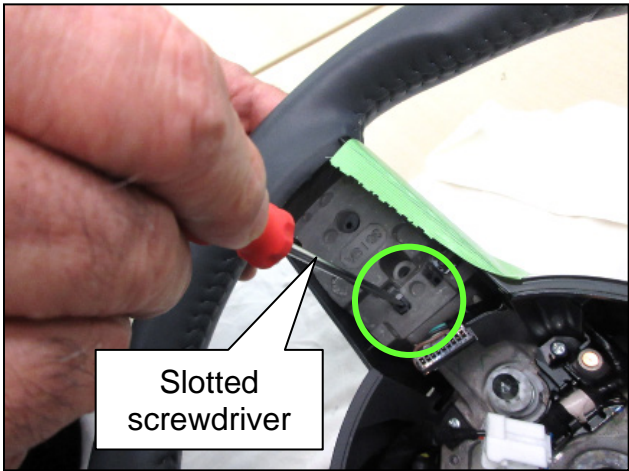


Figure 12

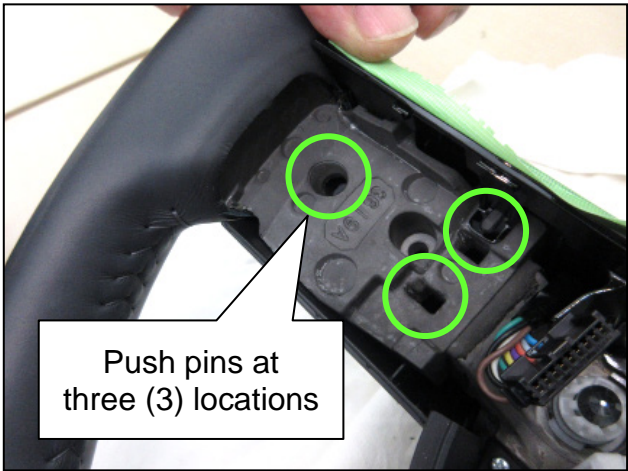


Figure 13

12. Use a Flashlight to carefully inspect the outboard insertion hole shape, as shown in Figure 14 and Figure 15. Repeat this step for the opposite side switch.
- If the insertion hole is circular, as shown in Figure 16, continue to step 13 on page 9.
  - If the insertion hole is not circular, as shown in Figure 17, there is a possibility that the urethane is chipped. Stop and replace the complete steering wheel assembly.
    - Refer to the **ESM: STEERING > STEERING SYSTEM > REMOVAL AND INSTALLATION > STEERING WHEEL > Removal and Installation**



Figure 14

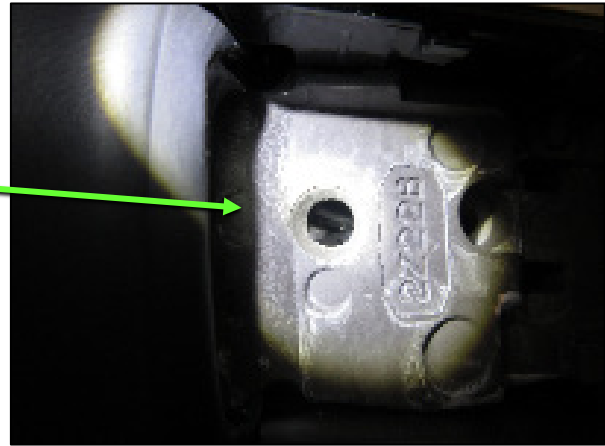


Figure 15

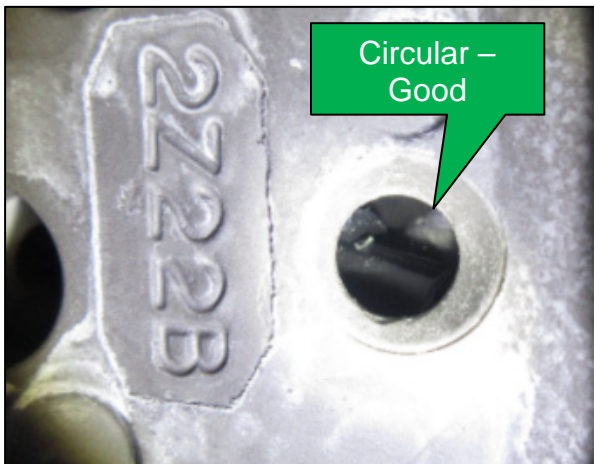


Figure 16

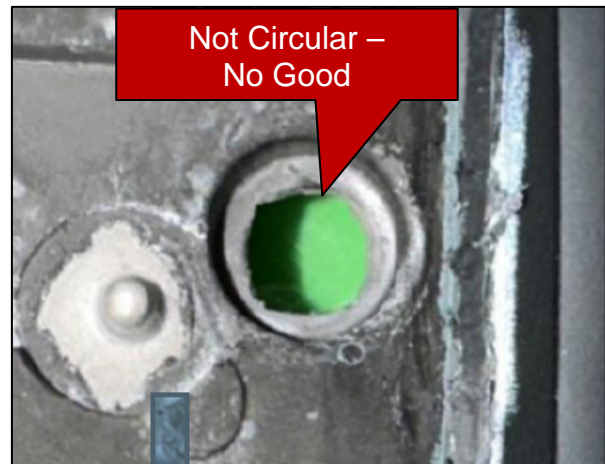


Figure 17

- 13. Remove the Cloth tape from the back side of the steering wheel to remove the dislodged pins, as shown in Figure 18. Repeat this step for the opposite side switch.
  - Verify the three (3) pins are removed from each side of the steering wheel for a total of six (6) pins, as shown in Figure 19.



Figure 18



Figure 19

- 14. Reinstall the Paddle shifters in the reverse order of removal. Torque the Paddle shifter retaining screw to 1.5 N•m (0.2 kg-m, 13.3 in-lb), as shown in Figure 20 and Figure 21. Repeat this step for the opposite side switch.

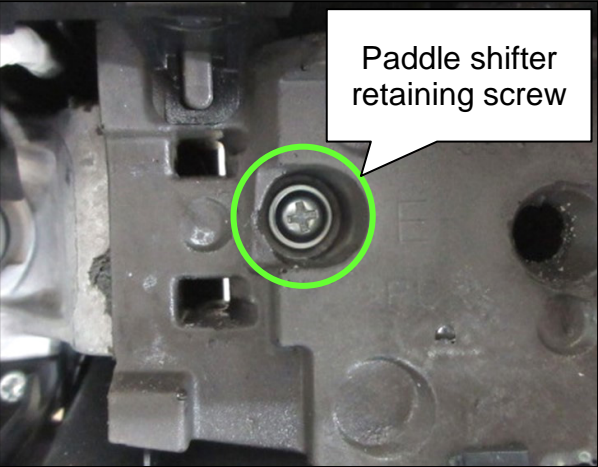


Figure 20



Figure 21

15. Install the connector for the replacement switch assembly until it clicks and is secure, as shown in Figure 22.

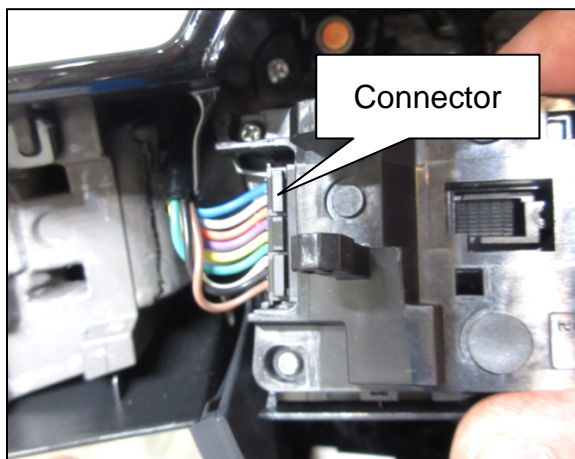


Figure 22

16. Install the replacement switch assembly by inserting the pins into the holes in the steering wheel, as shown in Figure 23. Press on the inboard edge of the switch and then on the outboard edge of the switch to secure, as shown in Figure 24. Repeat this step for the opposite side switch.



Figure 23

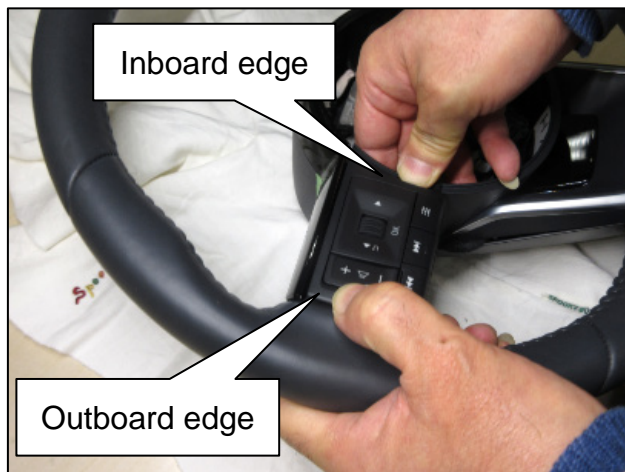


Figure 24

17. After installing the switch assembly, verify no gap exists between the switch assembly and the adjacent surfaces in the areas shown in Figure 25 and Figure 26. Repeat this step for the opposite side switch.

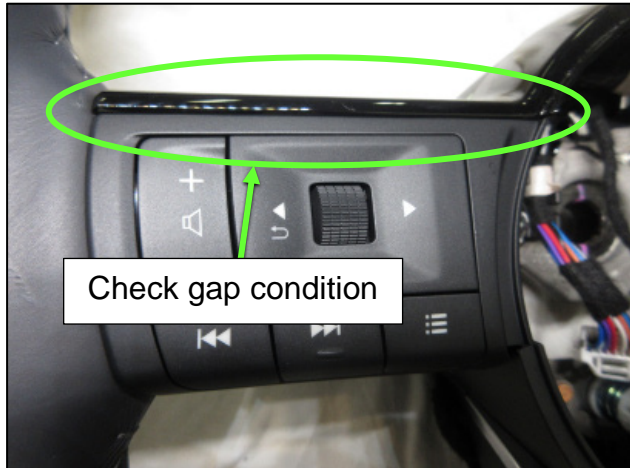


Figure 25

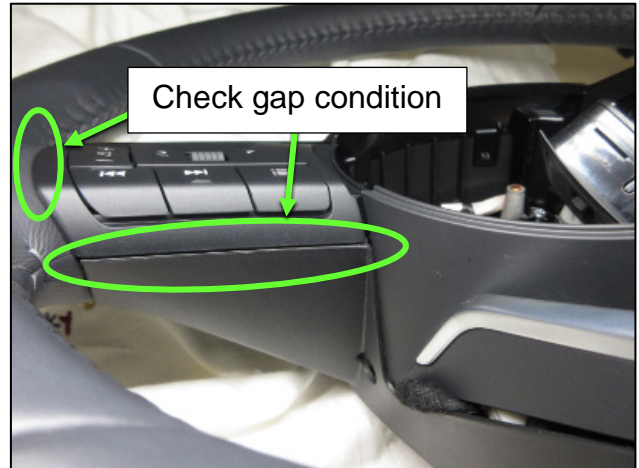


Figure 26

18. Reinstall the steering wheel assembly.
- Refer to the ESM: **STEERING > STEERING SYSTEM > REMOVAL AND INSTALLATION > STEERING WHEEL > Removal and Installation**
19. Check the function of the steering wheel switch buttons to verify they are working properly, click when pressed, and do not stick when released.

## PARTS INFORMATION

DESCRIPTION	PART NUMBER	QUANTITY
SWITCH ASSY – STEERING (Switch Assembly)	25550-XXXXX (1)	As needed
WHEEL ASSY - STEERING W / O PAD (Steering Wheel Assembly)	48430-XXXXX (1)	As needed
Cloth tape	(2)	As needed

- (1) Refer to the electronic parts catalog (EPC) and use the VIN to determine the vehicle specific service part.
- (2) This item can be found in local hardware stores or online.

## CLAIMS INFORMATION

Submit a Primary Part (PP) type line claim using the following claims coding:

MODEL	DESCRIPTION	PFP	OP CODE	SYM	DIA	FRT
Pathfinder	Replace Steering Wheel Switch	(1)	RXG6AA	ZE	32	0.8
Rogue			RXG5AA			0.9

- (1) Reference the electronic parts catalog and use the Steering Wheel Switch (25550-\*\*\*\*\*) as the Primary Failed Part (**PFP**).

## AMENDMENT HISTORY

PUBLISHED DATE	REFERENCE	DESCRIPTION
June 25, 2025	NTB25-030	Original bulletin published
October 1, 2025	NTB25-030A	<b>APPLIED VEHICLES</b> and step 12 revised, Warning, Caution, Notice added on page 2