

Technical Service Bulletin

Topic	Measured values - Cycle recording instructions
Market area	Australia E04 Bentley rest Asia and Australia (6E04),China 723 Volkswagen (Anhui) Automotive CO (6723),China 796 VW Import Comp. Ltd (Vico), Beijing (6796),Germany E02 Bentley rest Europe (6E02),Japan E03 Bentley Japan (6E03),Korea, (South) E08 Bentley South Korea (6E08),United Arab Emirates E06 Bentley Middle East and Africa (6E06),United Kingdom E01 Bentley UK (6E01),United States E05 Bentley USA and rest America (6E05)
Brand	Bentley
Transaction No.	2071131/5
Level	EH
Status	Released for publishing
Release date	Oct 6, 2025

New customer code

Object of complaint	Complaint type	Position
vehicle service -> IT systems -> SVM (Software Version Management)	control modules, services -> error message	
vehicle service -> vehicle diagnosis -> Guided Fault Finding (GFF)	control modules, services -> with fault stored in the DTC memory	
vehicle service -> inspection, maintenance -> performing a service	service: process -> with complaint confirmation	

Vehicle data

All models

Sales types

Type	MY	Brand	Designation	Engine code	Gearbox code	Final drive code
*	2004	E		*	*	*
*	2005	E		*	*	*
*	2006	E		*	*	*
*	2007	E		*	*	*
*	2008	E		*	*	*
*	2009	E		*	*	*
*	2010	E		*	*	*

*	2011	E		*	*	*
*	2012	E		*	*	*
*	2013	E		*	*	*
*	2014	E		*	*	*
*	2015	E		*	*	*
*	2016	E		*	*	*
*	2017	E		*	*	*
*	2018	E		*	*	*
*	2019	E		*	*	*
*	2020	E		*	*	*
*	2021	E		*	*	*
*	2022	E		*	*	*
*	2023	E		*	*	*
*	2024	E		*	*	*
*	2025	E		*	*	*
4V1*	2026	E		*	*	*
Z24*	2026	E		*	*	*
Z32*	2026	E		*	*	*

Documents

Document name

master.xml

Condition

In some cases Measured value traces may be requested in XML format for analysis by Product Support

Technical Background

The instructions within the Measure section of this TPI have been generated to guide operatives through the process for recording Measured values in cycles by using self diagnosis, the Instructions also detail how to locate corresponding files which are required for analysis

Product Support will advise regarding the Measured values and cycle time required

Revision history - TPI 2071131/5

Updated product support contact email address

Production Solution

Not applicable

Service

1) From self diagnosis - Select the Measured values for the required control unit (Figure 1)

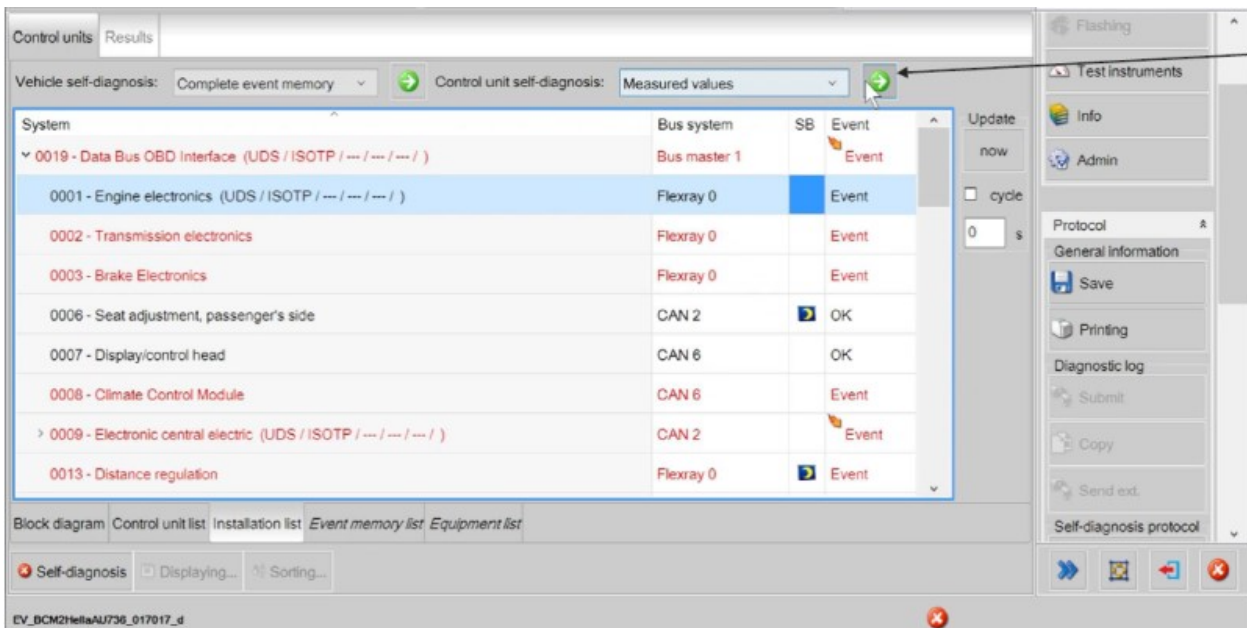


Figure 1

2) Select the required Measured values (Figure 2)

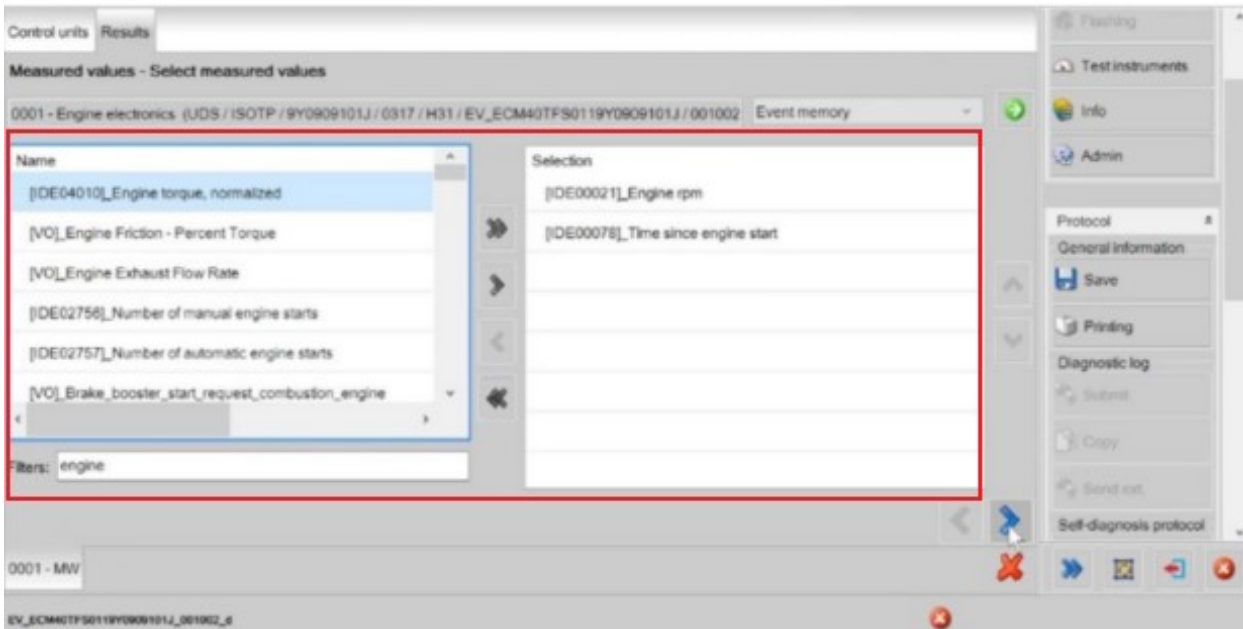


Figure 2

3) Referring to Figure 3 - Ensure Cycle is selected (ticked)

- Ensure the update time is set to an appropriate value (0 seconds should be selected in most cases)

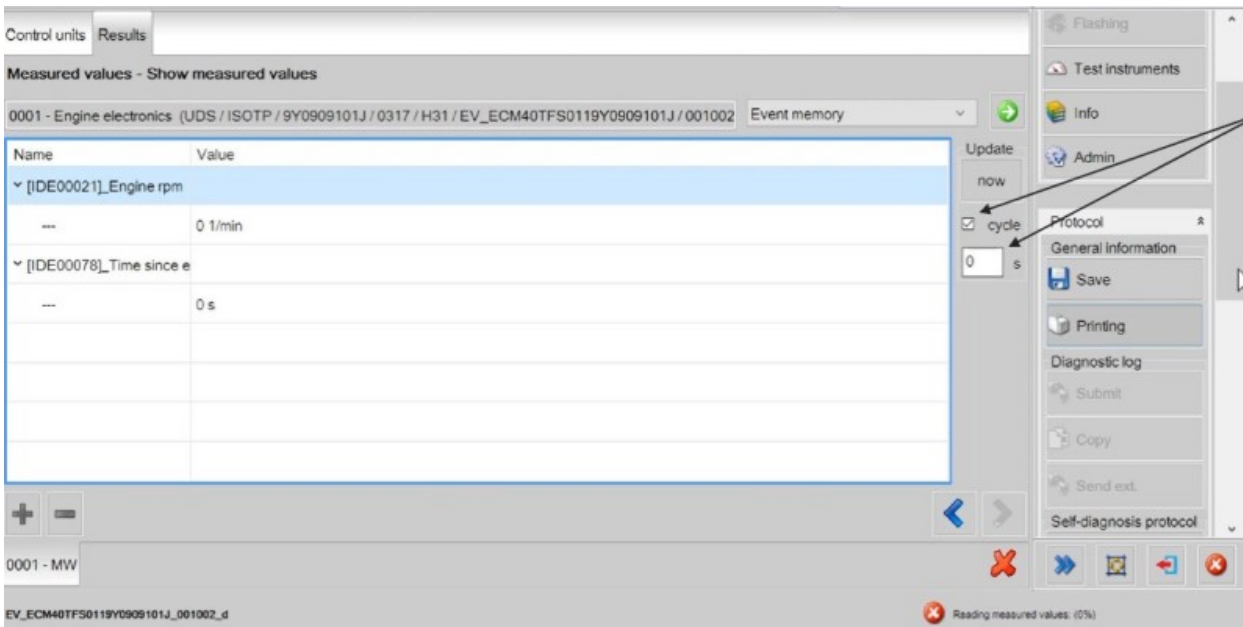


Figure 3

4) Referring to Figure 4 - From the side tool bar start a new Self-diagnosis protocol

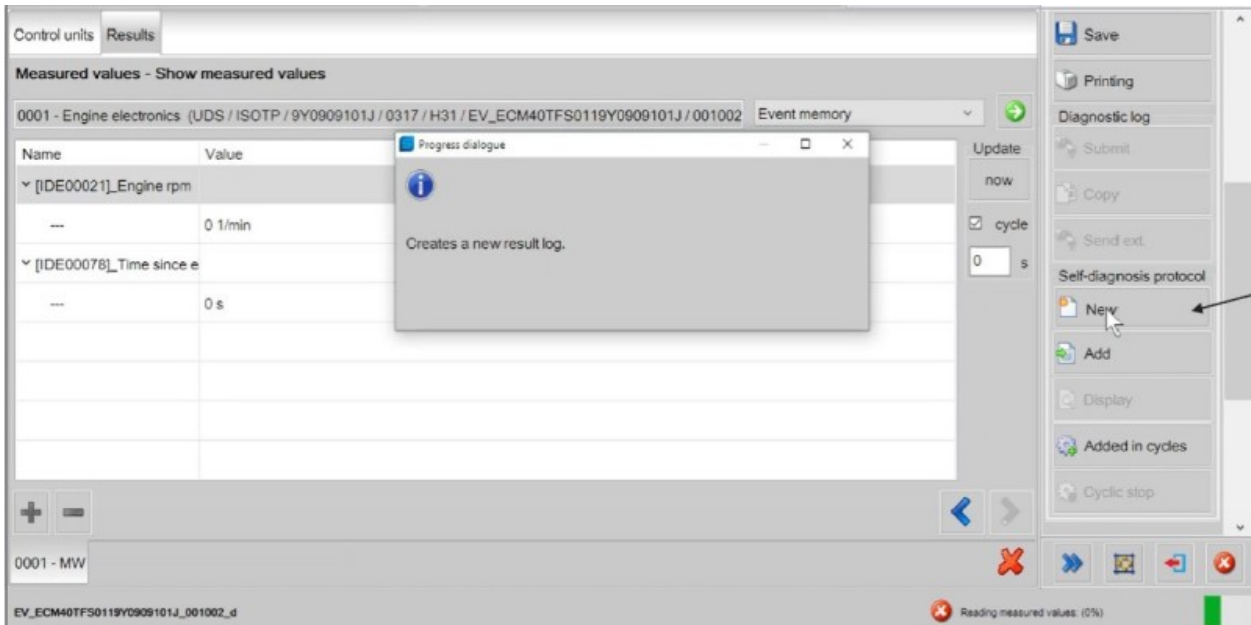


Figure 4

5) Select Added in cycles (Figure 5)

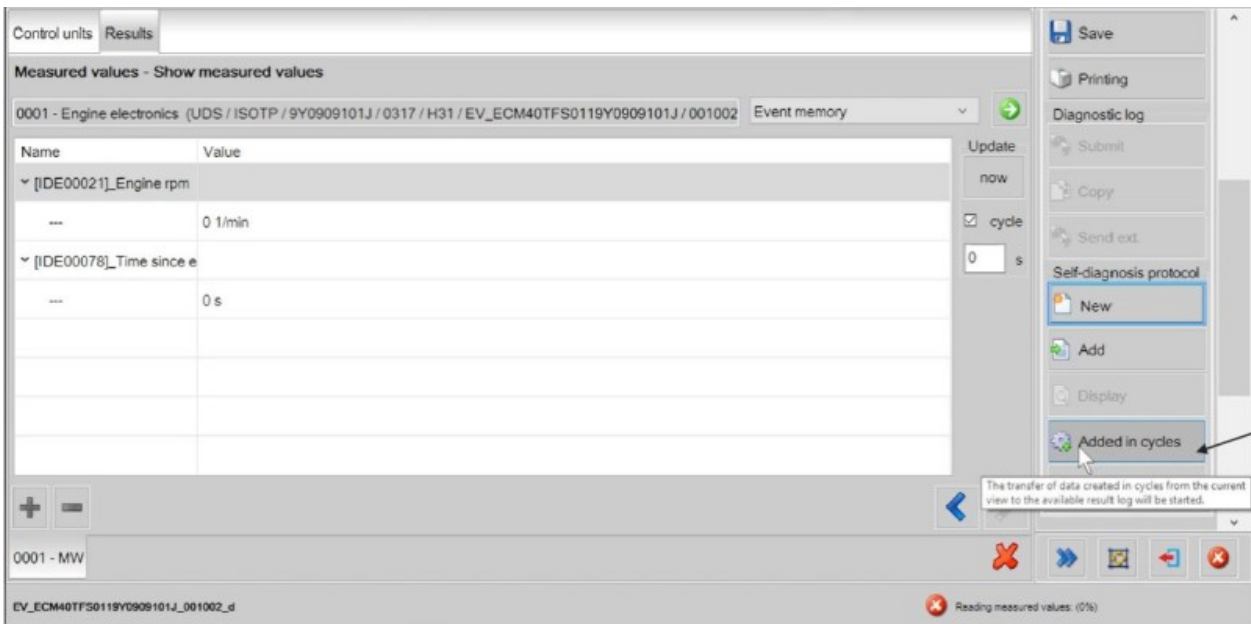


Figure 5

NOTICE

Data will now be added automatically to the diagnosis log once Added in cycles is pressed

6) Select Cyclic stop as soon as the relevant data is collected to prevent excess redundant data (Figure 6)

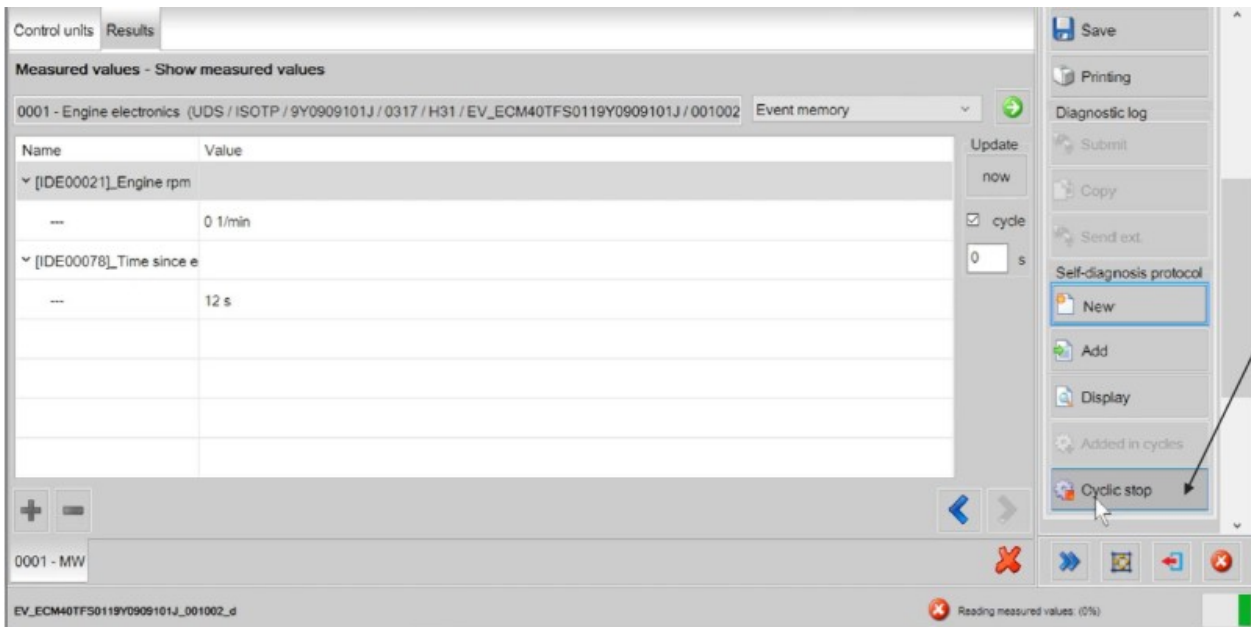


Figure 6

7) Select Display (Figure 7) this will save the log in HTML and XML format and open the HTML file

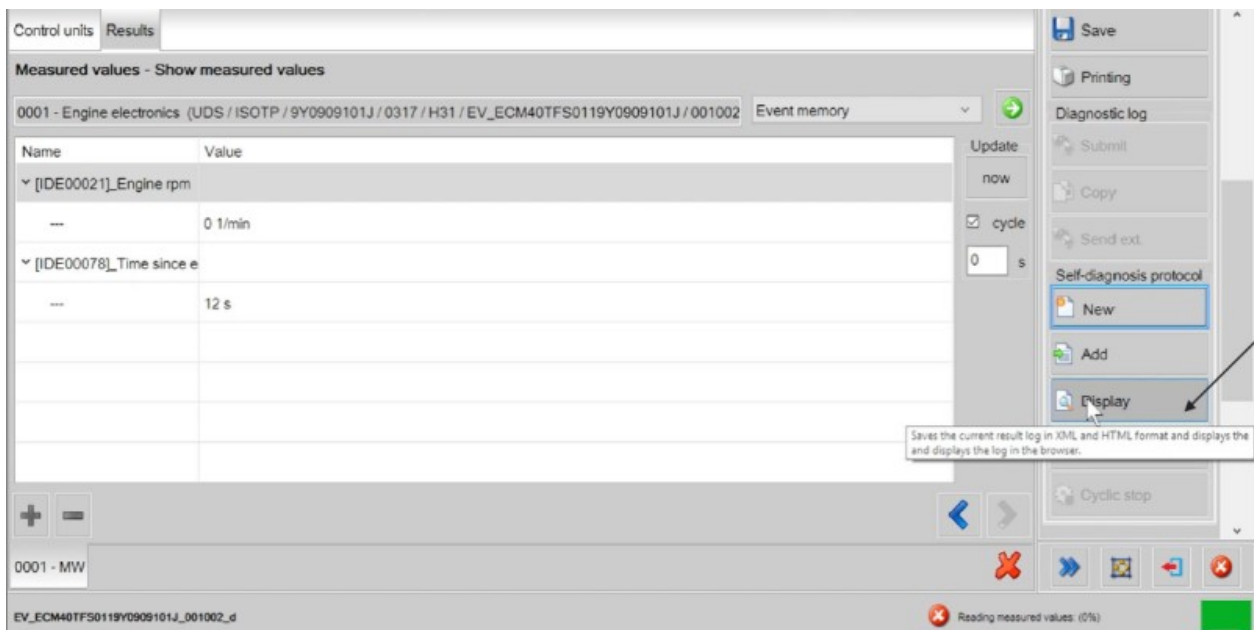


Figure 7

8) The location of the files will be displayed in the now open HTML file (Figure 8)

NOTICE

If this location is not visible it may be hidden, please see further information shown in Figure 9

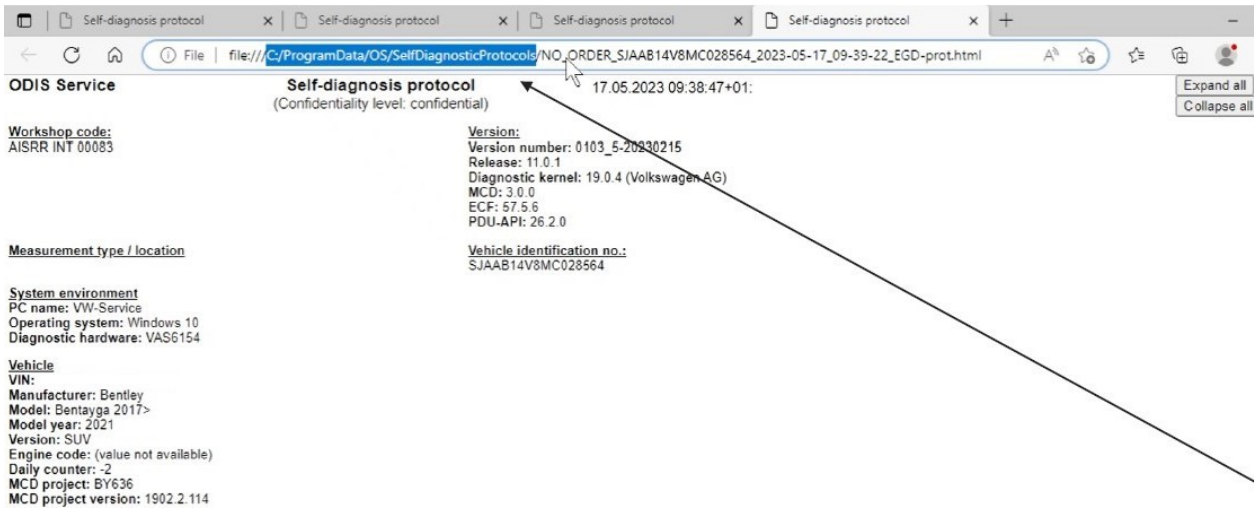


Figure 8

NOTICE

In the event that the XML file cannot be attached to the DISS query please email the file to the region specific product support teams (see below) ensuring the DISS number is included in the subject

- EU – euproductsupport.bymc.rs.cre@bentley.co.uk
- UK – ukproductsupport.bymc.rs.cre@bentley.co.uk
- USA – usaproductsupport.bymc.rs.cre@bentley.co.uk
- MEAI – meaproductsupport.bymc.rs.cre@bentley.co.uk
- CHINA – chinaproductsupport.bymc.rs.cre@bentley.co.uk
- APAC – apacproductsupport.bymc.rs.cre@bentley.co.uk

9) Referring to Figure 9 - Access the program data for ODIS-your Windows (C:)drive



Please beware that in some cases the “Program Data” folder may need to be unhidden
 Navigate through: File > Folder Options > View > Show Hidden Files, folders and drives

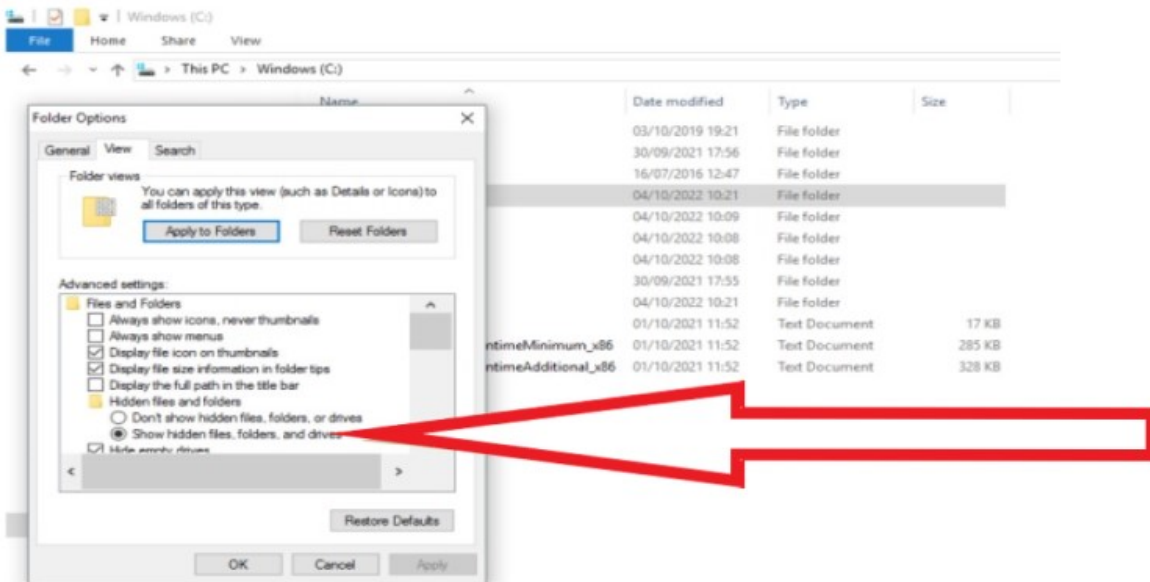


Figure 9