



STAR ONLINE PUBLICATION



Case Number: S2505000010

Release Date: October 2025

Symptom/Vehicle Issue: After Recent Repair Cruise Control Disengages, Malfunction Indicator Lamp (MIL) And/Or Brake Lamp Is On.



Discussion: The diagnostic trouble code(s) (DTC) shown below and customer complaint may have started after recent service repair. Incorrect removal of the brake pedal position sensor could damage the switch. DTCs including:

P057B BRAKE PEDAL POSITION SENSOR "A" CIRCUIT PERFORMANCE
P057C BRAKE PEDAL POSITION SENSOR CIRCUIT LOW
P057D BRAKE PEDAL POSITION SENSOR CIRCUIT HIGH

<<<NOTE>>> If DTC P057B is active or stored, do not replace the brake light switch (68517960AA) or the brake pedal sensor (68326322AA).

1.Document and clear the following codes if they show in wiTECH during the repair before proceeding to diagnose P057B:

This document does not authorize warranty repairs. This communication documents a record of past experiences. STAR Online does not provide any conclusions about what is wrong with the vehicle. Rather, it captures all previous cases known that appear to be similar or related to the vehicle symptom / condition. You are the expert, and you are responsible for deciding on the appropriate course of action.

Contact STAR Center, or your Technical Assistance Center Via TechConnect, eCONTACT or Service Library entry if no solution is found.



STAR ONLINE PUBLICATION



U0418 - IMPLAUSIBLE DATA RECEIVED FROM BRAKE SYSTEM CONTROL MODULE

U12A8 - LOST COMMUNICATION WITH MASTER CYLINDER PRESSURE SENSOR

U0140 - LOST COMMUNICATION WITH BODY CONTROL MODULE (PCM)

2. If PCM, brake pedal position sensor, or the brake light switch have been inspected or repaired before, perform a brake pedal re-learn and check if the code is active before replacing any components.

3. If PCM is replaced or the PCM ECU was offline for any reason:

- Perform a brake pedal re-learn, confirm that the DTC is stored, and test drive it to confirm if the issue still exists.
- If the issue re-occurs, proceed with the service information in the service library.

<<<NOTE>>> Service Library has updated information regarding diagnosing P-codes from PCM on the brake pedal sensor.

BEST PRACTICE

Please refer to star online document - S2405000002 Rev. B to perform a proper brake light switch inspection.

This document does not authorize warranty repairs. This communication documents a record of past experiences. STAR Online does not provide any conclusions about what is wrong with the vehicle. Rather, it captures all previous cases known that appear to be similar or related to the vehicle symptom / condition. You are the expert, and you are responsible for deciding on the appropriate course of action.

Contact STAR Center, or your Technical Assistance Center Via TechConnect, eCONTACT or Service Library entry if no solution is found.



STAR ONLINE PUBLICATION

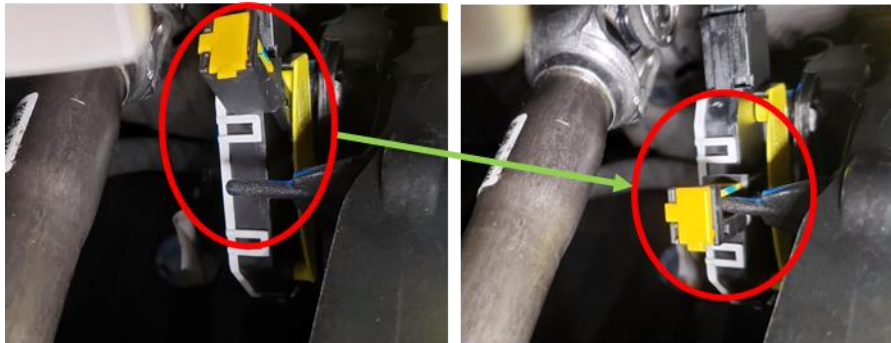


Not Ok Left (Red). Ok Right (Green)

Brake pedal sensor verification:

<<<**NOTE**>>> If a brake pedal sensor is suspected as faulty, follow the verification below.

1. Inspect the assembly of the sensor arm with the pivot pin on the pedal. If the sensor actuator lever is not in contact with pedal pin, please correct sensor position as shown below:



This document does not authorize warranty repairs. This communication documents a record of past experiences. STAR Online does not provide any conclusions about what is wrong with the vehicle. Rather, it captures all previous cases known that appear to be similar or related to the vehicle symptom / condition. You are the expert, and you are responsible for deciding on the appropriate course of action.

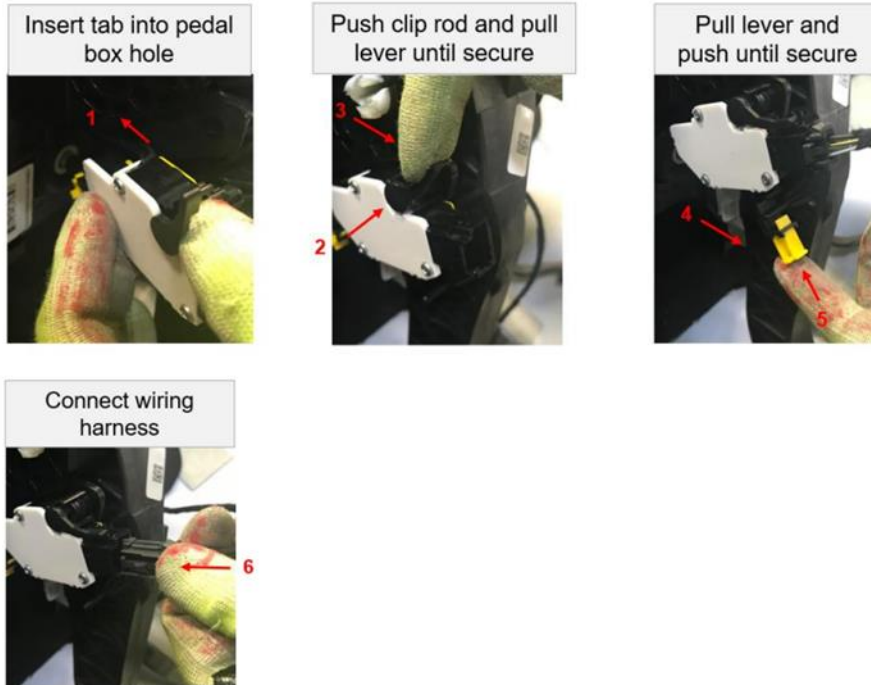
Contact STAR Center, or your Technical Assistance Center Via TechConnect, eCONTACT or Service Library entry if no solution is found.



STAR ONLINE PUBLICATION



2. Installation should follow the process below:



3. Perform the “Brake Pedal Learn” procedure in the PCM.
4. Clear fault codes and test vehicle to confirm repair.
5. Reinstall back the knee blocker trim. Refer to Service Library 23 - Body / Instrument Panel / COVER, Steering Column Opening / Installation

This document does not authorize warranty repairs. This communication documents a record of past experiences. STAR Online does not provide any conclusions about what is wrong with the vehicle. Rather, it captures all previous cases known that appear to be similar or related to the vehicle symptom / condition. You are the expert, and you are responsible for deciding on the appropriate course of action.

Contact STAR Center, or your Technical Assistance Center Via TechConnect, eCONTACT or Service Library entry if no solution is found.