



LP Regulator Orientation and Cover

Bulletin Type:	TSB	Publication Date:	October 2025
Bulletin #(s):	25-015	Make(s):	Jayco & Entegra Coach
Job Code(s):	9803637	Model(s):	Seneca XT (29T), Accolade XT (29T)
Flat Rate(s):	9803637A .10 HR – LP Regulator Cover and Orientation Inspection 9803637B 1.0 HR – LP Regulator Cover and Orientation Inspection and Repair	Model Year(s):	2024 - 2025

Incident:	Orientation for LP regulator needs to be changed and cover installed
Affected Units:	2024-2025 Jayco Seneca XT (29T) units; 2024-2025 Entegra Accolade XT (29T) units
Parts Kit: 25-015JM	Parts Kit #: 25-015JM
	Part Kit Contents: 1 - COVER,RGLTR LP STY: UFP ASME TK 1 - BRACKET,LP RGLTR 7.13X6.00 16GA STL BPC 2 - RIVET,PLSTC .63 BLK PLGR 4 - SCREW,HEX WSHR .25X1.00 TEK3 ZC 2 - SCREW,MACH TR QUAD 10-24X .63 ZC 2 - NUT,HEX KEPS 10-24 ZC
Misc. Tools & Supplies:	Screw Gun with 3/8" Drive head & Square Head Bit, 1/2" wrench, 1" hole saw
Parts Return Information:	N/A

WARNING

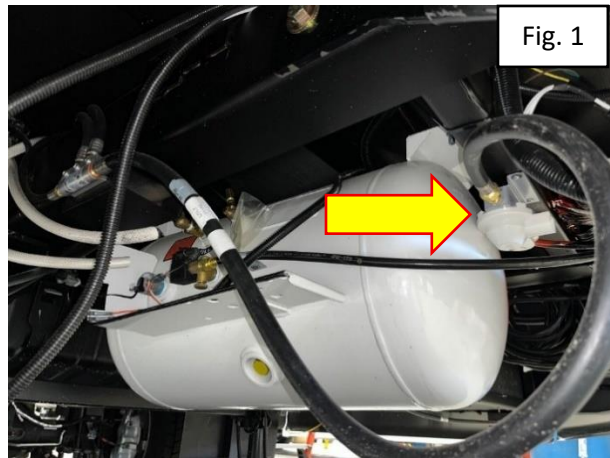
Indicates a potentially hazardous situation that, if not avoided, may result in death or serious injury.

WARNING

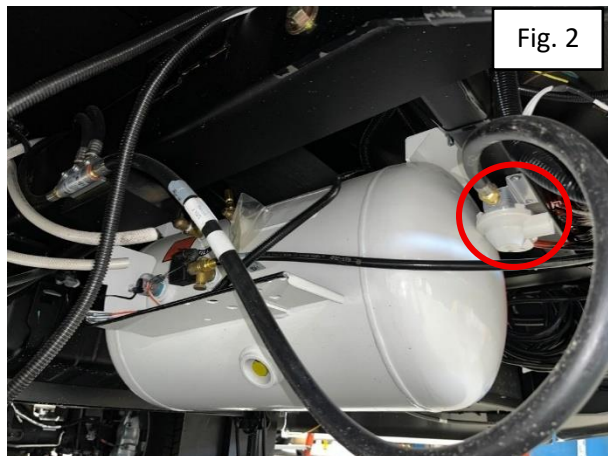
Ensure the LP to the coach has been disconnected, prior to starting the repair.

LP REGULATOR COVER REPAIR INSTRUCTIONS

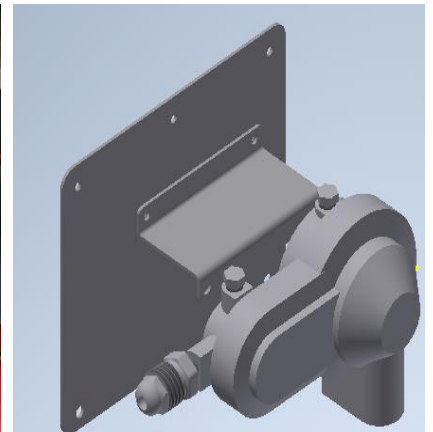
1. Locate the LP regulator under the coach near the LP Tank. (Figure 1)



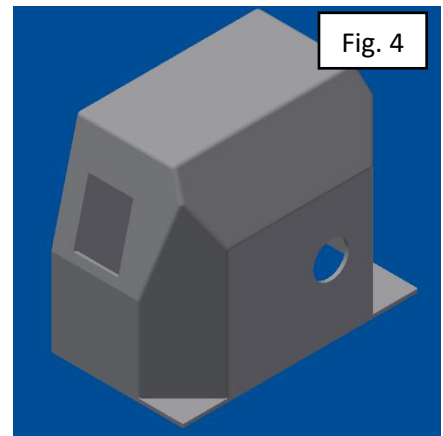
2. Remove the regulator and bracket from the coach using a screw gun with a square head bit. (Figure 2)



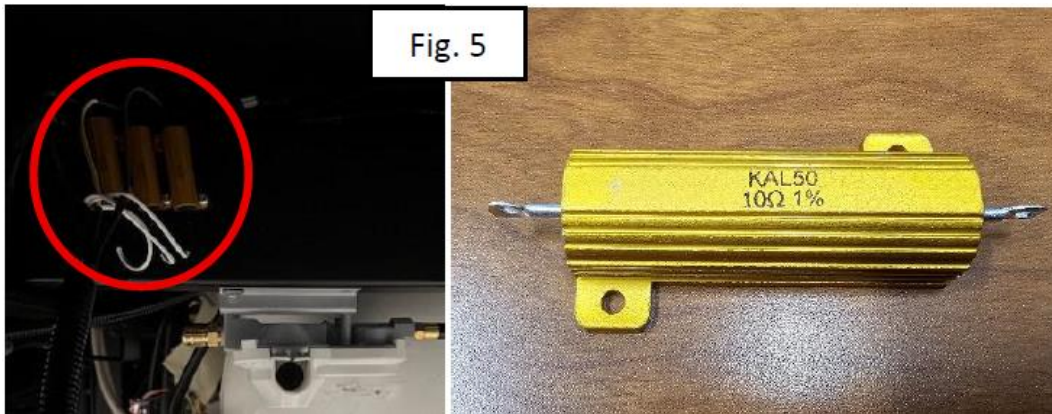
3. Disconnect the supply hose from the regulator using a 1/2" wrench.
4. Attach the regulator and bracket to the new mounting bracket using the supplied machine screws and washers. (Figure 3)
 - a. **Note: It is CRITICAL that the regulator vent be facing downwards.**



5. Place the new cover over the regulator and mark the location of the regulator vent. Use a 1" hole saw to cut a 1" hole in the cover for the regulator vent. (Figure 4)

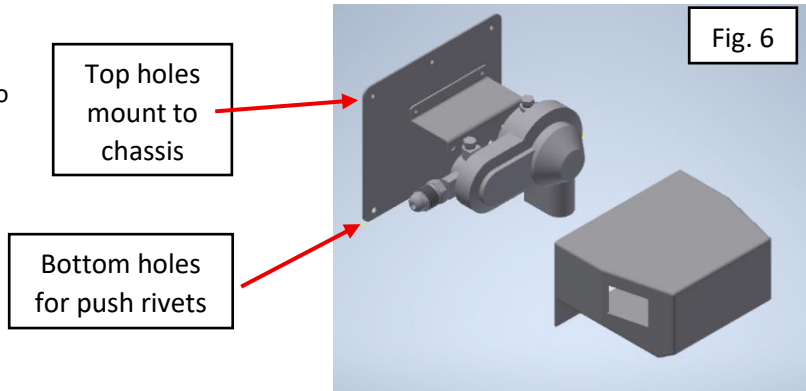


6. Re-install the bracket and assembly onto the coach, without the cover.
 - a. Note: There may be resistors on the frame rail where the LP Regulator will be mounted. (Figure 5) In the event the coach has the resistors in this location, route the LP lines away from the resistors. Contact Jayco Motorized Service for additional assistance.



7. Attach the cover to the new mounting plate over the regulator. Secure it to the bracket using the supplied push rivets (X2). (Figure 6)

8. Re-install the bracket and assembly onto the coach.
9. Reconnect the LP lines. Do a LP drop pressure test.



Jayco's sole obligation under our limited warranty is to repair or replace defective materials and/or workmanship deemed our responsibility as determined by Jayco in our sole discretion. Jayco reserves the right to use new and/or remanufactured parts or materials of similar quality to complete any work, and to make parts and/or design changes as appropriate without notice to anyone. Jayco designs and/or materials changes are done without obligation to incorporate such changes in previously manufactured product. Jayco makes every reasonable effort to ensure field remedies will not adversely affect performance and/or safety of the unit. This field remedy is not intended to extend to future performance of this RV, or any of its materials, components or parts beyond the standard warranty period. The RV owner's obligation to notify Jayco, or one of its independent, authorized dealers, of a claimed defect does not modify any obligation placed on the RV owner to contact Jayco directly when attempting to pursue remedies under state or federal law.

903 South Main Street • P.O. Box 460 • Middlebury, IN 46540