

Field campaign

Topic	Software Update Window Short Drop Deletion Continental GT/GTC 26MY (SC25 /31)
Market area	Bentley: worldwide (2WBE),China 796 VW Import Comp. Ltd (Vico), Beijing (6796)
Brand	Bentley
Transaction No.	2078277/8
Campaign number	ED59
Note	
Type	
US code	

Vehicle data

26MY Continental GT / GTC

Sales types

Type	MY	Brand	Designation	Engine code	Gearbox code	Final drive code
Z23*	2026	E		*	*	*
Z24*	2026	E		*	*	*

Documents

Document name
master.xml
gt_glass_set_measurement_sheet.pdf
gtc_glass_set_measurement_sheet.pdf
v8sc2531vinlist.pdf

ED59

Transaction No.: 2078277
/8

Software Update | Window Short Drop Deletion | Continental GT/GTC | 26MY
(SC25/31)

Release date: Sep 9, 2025

Notes

▼ [Repair instructions](#)

Technical background

CAUTION

Please refer to all of the instructions within the Work section. The instructions MUST be followed in the exact order as detailed

Remedy

All instructions within the Work section must be conducted as detailed

Software update is available for the left and right hand rear door control modules - Diagnostic address 00BB Driver side and 00BC Passenger side

The software eliminates the rear window short drop function

Customer notification

Please ensure the software instructions within the Service campaign must be conducted at the nearest opportunity

Warranty

Warranty type	710 or 790
Damage service number	ED59
Damage code	00 66
Criterion ID	01

Time to conduct the Software Version Management (SVM) update - Rear door control modules

Labour operation code	01 51 00 00
Time	As per ODIS log Must not exceed 50 TU

Time to conduct initial measurement checks Profile (Y-Axis) and Interlock (X-Axis)

Labour operation code	64 38 02 00
Time	30 TU

CAUTION

The labour codes below must only be claimed if the Profile (Y-Axis) and Interlock (X-Axis) were out of specification (before and / or after the software update was conducted)

Time to conduct the front glass adjustment procedure

Labour operation code 64 40 15 00

Time 140 TU (per side)

Time to conduct the rear glass adjustment procedure

Labour operation code 64 75 15 00

Time 170 TU (per side)

Water leak test

Labour operation code 64 38 01 99 (Use this code when conducting the water leak test)

Time 20 TU

Additional Time Allowance

A 100TU allowance may be claimed only if a SVM update fails to complete successfully. This is intended to cover additional diagnostic or recovery work directly resulting from the failed update. It must not be used for unrelated delays or issues.

ODIS logs must be attached to a DISS ticket for evidence of failure. Claims without valid documentation will be rejected. Warranty Adjudicators will review associated ODIS logs and DISS queries to determine actual software update time.

Parts

Not applicable

Parts supply

NOTICE

Should one or both of the measurements not be within specification the operative must refer to Rep.Gr 64 - Rear door drop glass - To adjust and conduct the front and rear glass adjustment procedure for the affected side left and / or right hand side to completion (all steps)

NOTICE

Adjustment of all side glass requires the interior trim to be removed. Refer to "Rear quarter trim – To remove and fit". Rep. Gr. 70



To carry out the "Rear quarter trim – To remove and fit". Rep. Gr. 70 procedure, the following one-time-use parts must be replaced during the reinstallation:

N 989 244 01 x4 (Front seat belt slider bar fixing x2 each side)

N 989 244 01 x2 (Rear seat belt fixing x1 each side)

Refer to ETKA parts catalogue

Parts despatch control

Not applicable

Technical background

CAUTION

Please refer to all of the instructions within the Work section. The instructions MUST be followed in the exact order as detailed

Check

If the vehicle is not already listed as repaired in "Repair history" (in Elsa pro), check for the presence of the blue paint completion mark as shown within the Identification section

If neither are evident please conduct the instructions within the Work section to completion.

Parts

Not applicable

Work

CAUTION

Ensure the vehicle is connected to a suitable 12V Lithium Ion battery charger before conducting any work

Section 1 – Initial Glass Set Measurements

NOTICE

Conduct initial glass set measurements and record the results in the model specific measurement document attached (see documents section). After completing the initial measurements, DO NOT make any adjustments until after the software update has been completed

CAUTION

When completing the initial glass set measurements strictly adhere to the instructions in section 2



When completing measurements on Continental GTC models, complete a set of measurements with both the roof up and the roof down, as per the attached glass set measurement sheet

Section 2 – Glass Set Measurement Instructions

CAUTION

When completing the glass set measurement procedure, strictly adhere to the instructions below

If unsure about the measurement process follow the video on eAcademy or raise a full technical DISS query.

To eliminate confusion about the usage of WT10549/3 and the Y axis profile measurement between the front and rear windows and how to correctly read/enter the measurements in the tables, please refer to the below images to aid with accurate reading of the Y axis profile when using WT10549/3.

Window Parallel

When the window is parallel take the 2mm step from the tool and minus the 2mm gap between front window and tool = -0mm (as shown in figure 1)

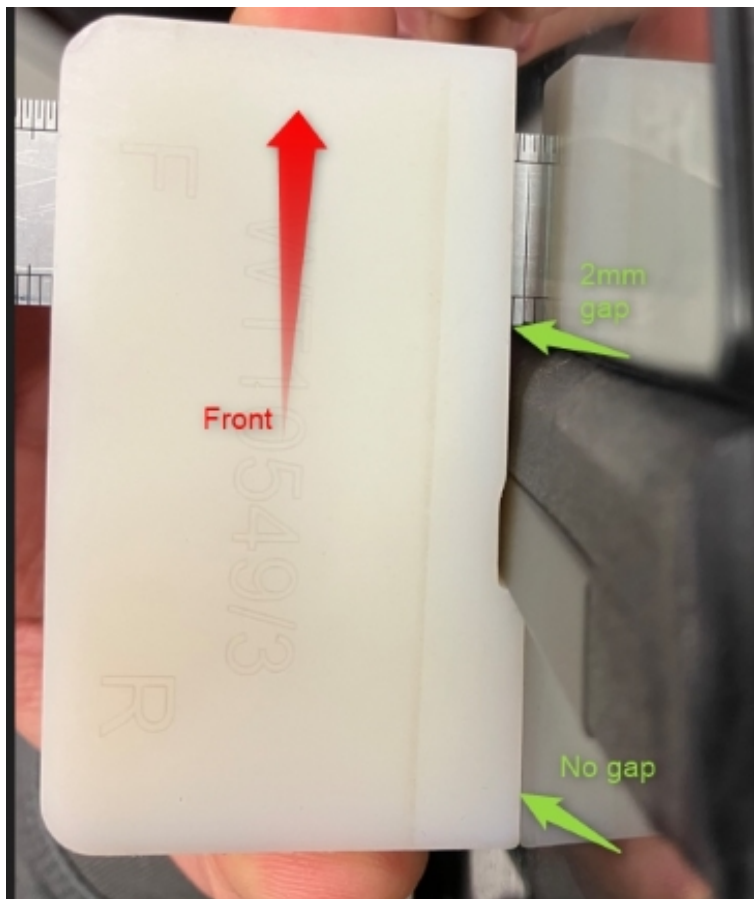


Figure 1

When the rear window is 0mm inboard from the front glass and the windows are parallel, the measurement written as 0mm (figure 2)

Profile (Y-Axis) Roof Down	Vehicle Position	Dimension -X-	Before adjustment
4 50mm from top of division bar	Front drop glass to rear quarter glass	+0 mm / - 2 mm	0mm

Figure 2

Rear Window Inboard

When the rear window is inboard and there is a 2mm step from the tool, when there is no gap between either window and tool (figure 3), the recorded measurement should be -2mm (figure 4)

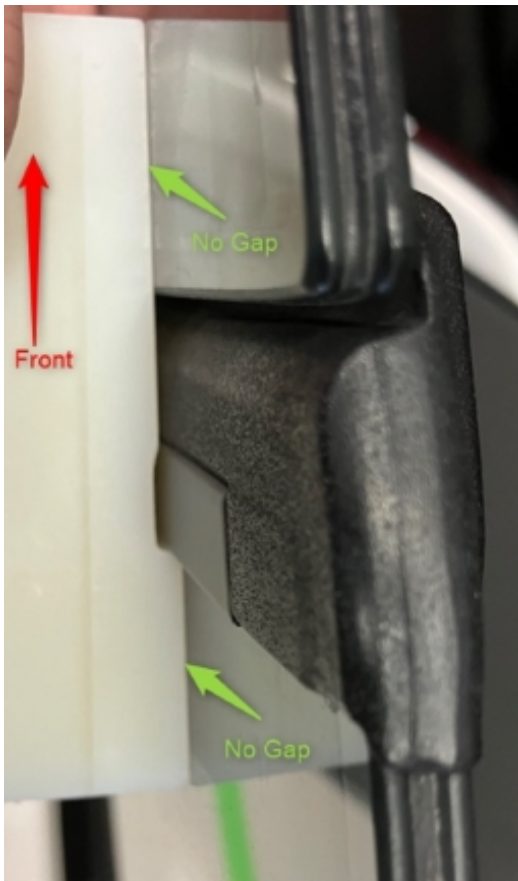


Figure 3

Profile (Y-Axis) Roof Down	Vehicle Position	Dimension -X-	Before adjustment
4 50mm from top of division bar	Front drop glass to rear quarter glass	+0 mm / - 2 mm	-2mm

Figure 4

Rear Window Too Far Inboard

When the rear window is inboard and there is a 2mm step from the tool as well as an additional 1.5mm gap to the window (figure 5), the recorded measurement should be -3.5mm (figure 6).

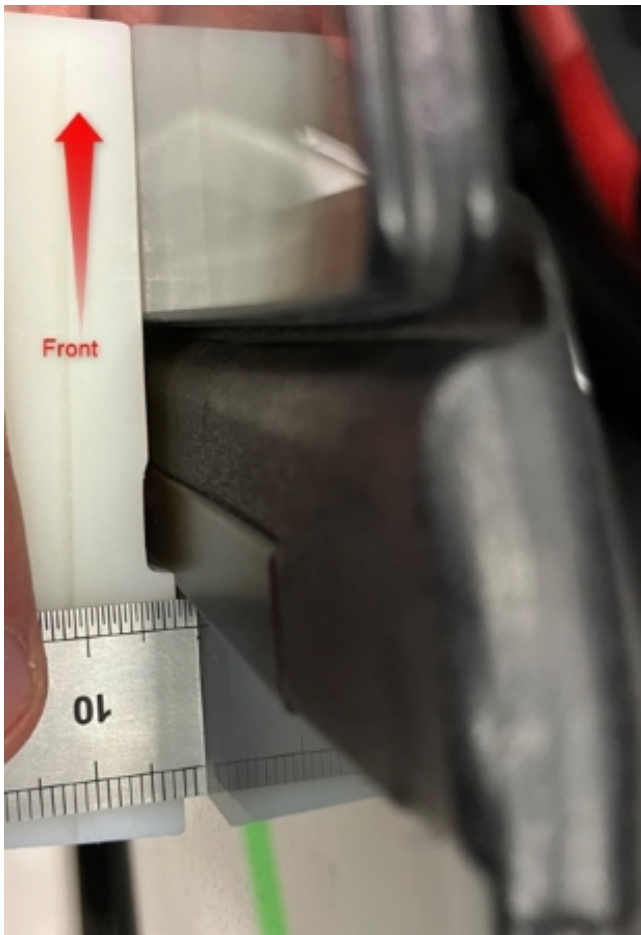


Figure 5

Profile (Y-Axis) Roof Down	Vehicle Position	Dimension -X-	Before adjustment
4 50mm from top of division bar	Front drop glass to rear quarter glass	+0 mm / - 2 mm	-3.5mm

Figure 6

If the tool (WT10549/3) does not sit flush against the rear window then this shows rear window is more than 2mm inboard (more than -2mm), check this by holding the tool on the front window and measuring gap between the rear glass and the tool (as shown in figure 7)

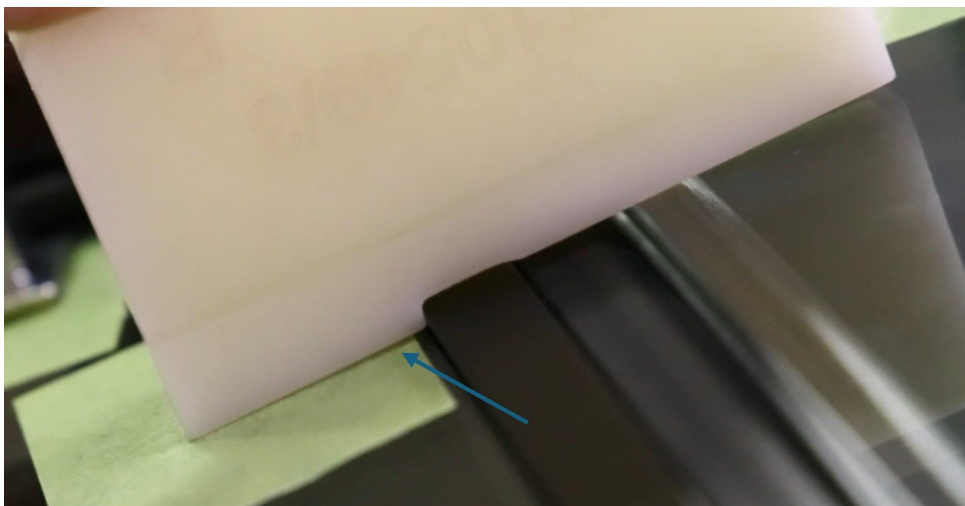


Figure 7

Further explanation can be found in the videos shown in Figure 8, which can be found on eAcademy Digital Learning Hub.

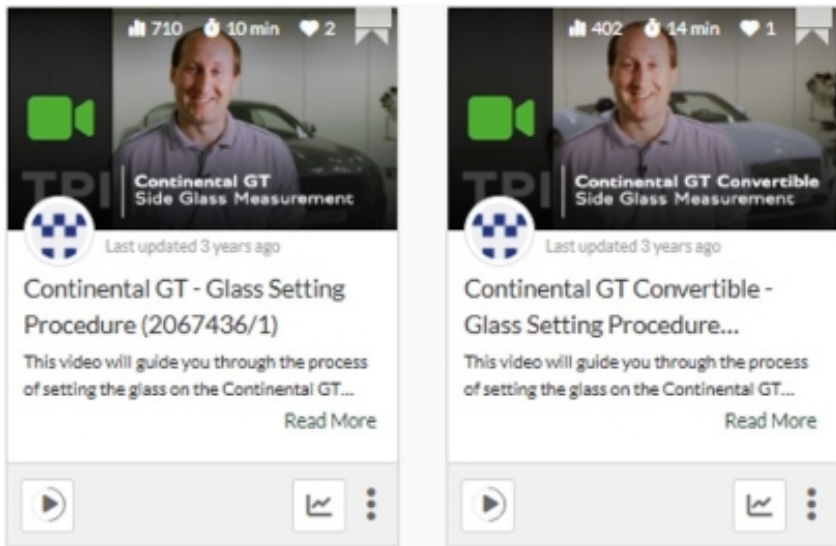


Figure 8

Section 3 - Software update to the rear door control modules 00BB and 00BC - Short drop function elimination

CAUTION

ONLY Chargers that meet the approved specification on the Mandatory Equipment List (available on the Bentley Hub) **MUST** be used.

- The charger must be set to a mode where a **MINIMUM** of 90a is supplied to the battery during the process. Typically, this is known as 'Power Supply Mode' or 'DIAG+ Mode'.
- A voltage of exactly 14.8v must be set and maintained throughout the process.
- Please refer to the manual to ensure that these requirements are met before beginning any SVM update



The following software update eliminates the rear window short drop function

1) Preparation before update

- Conduct a full guided fault find of the vehicle.



If a 'Check installation list' pop-up appears, select 'close' (Figure 9)

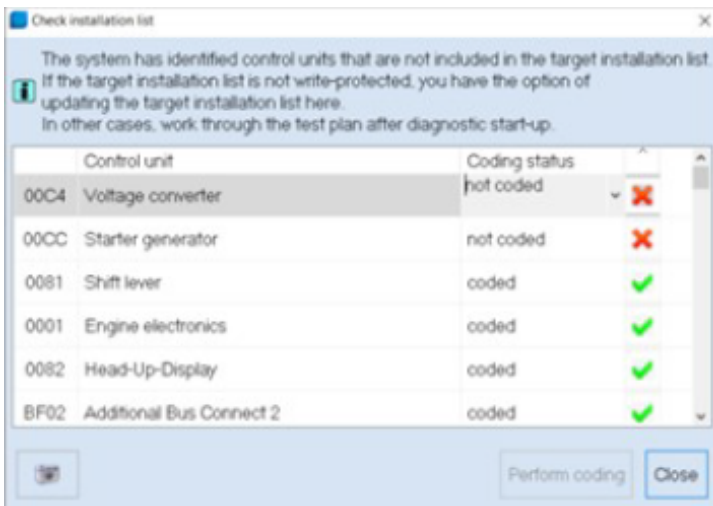


Figure 9

Referring to TPI 2075920, address any unknown faults **BEFORE** conducting any of the below updates.

2) Referring to Figure 10 - Within the Special functions tab - Select SVM - Code Input (Point A)

• Select Perform test (Point B)

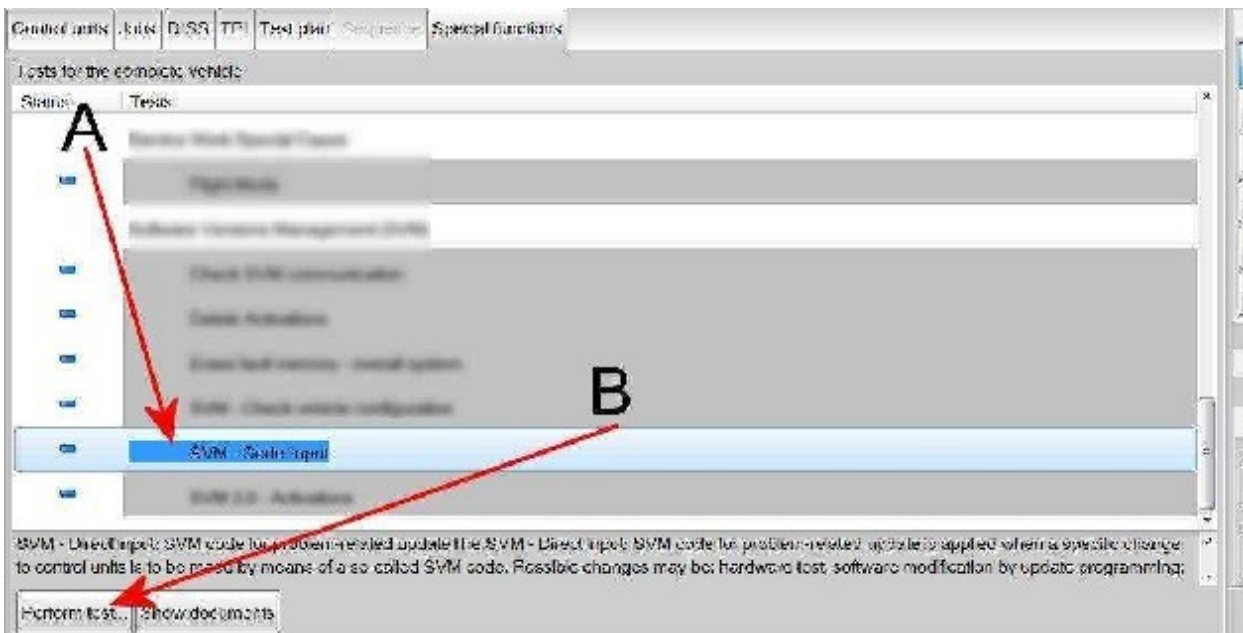


Figure 10

3) Referring to Figure 11 - Enter the SVM code **372WDD02**

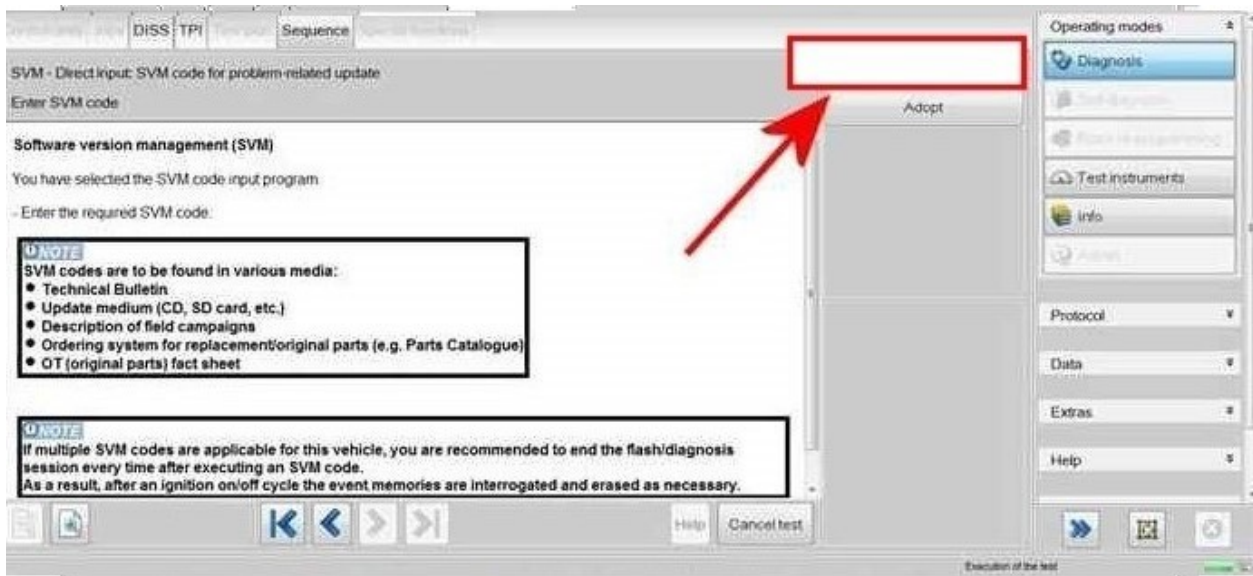


Figure 11

4) The control modules will automatically be updated one by one, starting with 00BB (Driver rear) and then 00BC (passenger rear)



Upon successful completion you will get a failure message of 8113 SVM Error

NOTICE

If you get any other error code, such as 8118, please refer to TPI 2078962

5) On completion open the doors and ensure that the rear windows no longer drop.

6) Switch off the ignition

- Remove the diagnostic interface from the OBD port
- Switch off and remove the battery charger from the vehicle
- Close the bonnet, boot and all doors
- Lock the vehicle
- Wait 5 minutes to allow the vehicle to go into bus silence
- When 5 minutes has elapsed, unlock the vehicle and open the driver's door
- Switch on the ignition

7) Once the software update has been conducted continue with the remaining instructions

Hint: The remaining instructions MUST be conducted regardless if adjustments were conducted or not

8) Referring to Rep.Gr 64 - Measure and record the points as detailed below on the left and right hand side Profile (Y-Axis) and Interlock (X-Axis).



CAUTION

Strictly adhere to the instructions in section 2 when completing the glass set measurements after the

software update has been completed.

Note: Should the measurements for the left and right hand side be within specification please go to step 11 and follow all remaining steps until completion

Or

 NOTICE

Should one or both of the measurements not be within specification the operative must refer to Rep.Gr 64 - Rear door drop glass - To adjust and conduct the front and rear glass adjustment procedure for the affected side left and / or right hand side to completion (all steps) and record a final measurement in the attached document

 CAUTION

All measurements must be recorded in the attached measurement documentation and saved as they will be required to be attached to a non-technical DISS query at the end of the procedure



FAILURE TO ATTACH THE MEASUREMENTS TO THE DISS WILL RESULT IN NON PAYMENT OF THE WARRANTY CLAIM

Note: Once the adjustment has been conducted please go to step 10 and follow all remaining steps until completion

9) VERY IMPORTANT - Referring to Rep.Gr 64 - Side glass - To initialise

 CAUTION

When conducting step 11 extra care must be taken to ensure the interior trim is suitably protected, any water which enters the vehicle due to a leak must be dried / cleaned immediately. Ensure all windows, sunroof and convertible roof (where applicable) are fully closed before conducting step 11

10) Conduct a water leak check to ensure that water is not leaking into the vehicles interior - Water leaks must be resolved before handing over the vehicle to the customer

11) Conduct the PDI road test to check for any wind noise related issues

 NOTICE

Should the vehicle fail the water leak check or a wind noise check, please raise a full technical DISS query

12) Upon successful completion of the PDI road test, raise a non-technical DISS query titled SC25/30 X and Y Axis measurement feedback ensuring the following is attached

- Online ODIS log
- A completed model specific measurement table

13) Referring to the Identification section - Apply a blue paint completion mark on the engine partition brace (Figure 12)

Identification

Blue paint completion mark on the engine partition brace



Figure 12

▲ Repair instructions ▲ Notes

Side glass measurements GTC 25/26MY					
Interlock (Z-Axis)	Vehicle Position	Dimension -X-	Before SVM	After SVM	After adjustment (if required)
1 50 mm from division bar	Front quarter glass	7.5 mm ± 1 mm			
2 100 mm from division bar	Front of door drop glass	8.5 mm ± 1 mm			
3 50 mm from rear of door drop glass	Rear of door drop glass	8.5 mm ± 1 mm			
6 50 mm from rear drop glass division bar	Front of rear quarter glass	8.5 mm ± 1 mm			
7 100 mm from where the hood meets the brightware	Rear of rear quarter glass	10 — 16mm			
Interlock (X-Axis) Roof Up	Vehicle Position	Dimension -X-	Before SVM	After SVM	After adjustment (if required)
4 50 mm from the top of the window	Rear door quarter glass strip to front door drop glass edge	11 mm ± 1 mm			
5 50 mm from the waistrail seal	Rear door quarter glass strip to front door drop glass edge	11 mm ± 1 mm			
Interlock (X-Axis) Roof Down	Vehicle Position	Dimension -X-	Before SVM	After SVM	After adjustment (if required)
4 50 mm from the top of the window	Rear door quarter glass strip to front door drop glass edge	11 mm ± 1 mm			
5 50 mm from the waistrail seal	Rear door quarter glass strip to front door drop glass edge	11 mm ± 1 mm			
Profile (Y-Axis)	Vehicle Position	Dimension -X-	Before SVM	After SVM	After adjustment (if required)
1 50 mm from division bar	Front quarter glass	10 mm ± 1 mm			
2 100 mm from division bar	Front of door drop glass	14 mm ± 2 mm			
8 50mm forwards of rear of front drop glass (waist rail gap)	Rear of door drop glass	5mm ± 1mm			
9 50mm rearward of front of rear drop glass (waist rail gap)	Front of rear quarter glass	5mm ± 1mm			
Profile (Y-Axis) Roof Up	Vehicle Position	Dimension -X-	Before SVM	After SVM	After adjustment (if required)
4 50mm from top of division bar	Front drop glass to rear quarter glass	+0 mm / - 2.5 mm			
5 50mm from bottom of division bar	Front drop glass to rear quarter glass	+0 mm / - 2 mm			
Profile (Y-Axis) Roof Down	Vehicle Position	Dimension -X-	Before SVM	After SVM	After adjustment (if required)
4 50mm from top of division bar	Front drop glass to rear quarter glass	+0 mm / - 2.5 mm			
5 50mm from bottom of division bar	Front drop glass to rear quarter glass	+0 mm / - 2 mm			

Side glass measurements GT 25/26MY					
Interlock (Z-Axis)	Vehicle Position	Dimension -X-	Before SVM	After SVM	After adjustment (if required)
A 50 mm from division bar	Front quarter glass	7.5 mm \pm 1 mm			
B 150 mm from division bar	Front of door drop glass	8 mm \pm 1 mm			
C 50 mm from rear of door drop glass	Rear of door drop glass	8 mm \pm 1 mm			
D 50 mm from rear drop glass division bar	Front of rear quarter glass	8 mm \pm 1 mm			
E 50 mm from rearmost section of rear drop glass	Rear of rear quarter glass	8 mm \pm 1 mm			
Interlock (X-Axis)	Vehicle Position	Dimension -X-	Before SVM	After SVM	After adjustment (if required)
4 50 mm from the top of the window	Rear door quarter glass strip to front door drop glass edge	11 mm \pm 1 mm			
5 50 mm from the waistrail seal	Rear door quarter glass strip to front door drop glass edge	11 mm \pm 1 mm			
Profile (Y-Axis)	Vehicle Position	Dimension -X-	Before SVM	After SVM	After adjustment (if required)
1 50 mm from division bar	Front quarter glass	10 mm \pm 1 mm			
2 150 mm from division bar	Front of door drop glass	10 mm \pm 2 mm			
3 50 mm from rear of door drop glass	Rear of door drop glass	10 mm \pm 2 mm			
6 50 mm from rear drop glass division bar	Front of rear quarter glass	10 mm \pm 2 mm			
7 50 mm from rearmost section of rear drop glass	Rear of rear quarter glass	10 mm \pm 2 mm			
8 50mm forwards of rear of front drop glass (waist rail gap)	Rear of door drop glass	5mm \pm 1mm			
9 50mm rearward of front of rear drop glass (waist rail gap)	Front of rear quarter glass	5mm \pm 1mm			
Profile (Y-Axis)	Vehicle Position	Dimension -X-	Before SVM	After SVM	After adjustment (if required)
4 50mm from top of division bar	Front drop glass to rear quarter glass	+0 mm / - 2.5 mm			
5 50mm from bottom of division bar	Front drop glass to rear quarter glass	+0 mm / - 2 mm			

INTERNAL

SCBCB13S2TC025658	SCBCR2ZG9TC025113	SCBDP4ZG9TC024422
SCBCB13S8TC025695	SCBDB33S5TC024763	SCBDR4ZG7TC024400
SCBCM13S0TC025720	SCBDG33S1TC024938	SCBCB13S2TC024364
SCBCM13S3TC025775	SCBDJ33SXTTC025085	SCBCJ1ZG7TC024351
SCBCM13S7TC025729	SCBDM33S0TC025099	SCBCM13S3TC024092
SCBCM1ZG4TC025755	SCBDM33S4TC024893	SCBCM13S7TC024337
SCBCM1ZGXTTC025646	SCBDM33S6TC024958	SCBCN13SXTTC024409
SCBCN13S0TC025780	SCBDN33S2TC024968	SCBDM33SXTTC024378
SCBCN13S7TC025730	SCBDN33S4TC024759	SCBDN33S5TC024317
SCBCP2ZG6TC025768	SCBDN33S9TC024840	SCBCB13S0TC024346
SCBDM33SXTTC025644	SCBDP4ZG0TC025068	SCBCB13S2TC024350
SCBDP4ZG2TC025699	SCBDP4ZG0TC025071	SCBCB13S5TC024133
SCBDP4ZG3TC025632	SCBDP4ZG0TC025118	SCBCB13S6TC024304
SCBDP4ZG5TC025714	SCBDP4ZG1TC025046	SCBCB13S7TC024375
SCBDP4ZG7TC025648	SCBDP4ZG2TC025041	SCBCG13S8TC024340
SCBDR4ZGXTTC025704	SCBDR4ZG9TC025077	SCBCM13S5TC024210
SCBCB13S0TC025612	SCBDR4ZG9TC025080	SCBCM13SXTTC024090
SCBCB13S1TC025702	SCBCP2ZG5TC025101	SCBCN13S0TC024290
SCBCB13S7TC025705	SCBCP2ZG1TC025063	SCBCN13S4TC024292
SCBCB13S9TC025690	SCBCP2ZG4TC025073	SCBCN13S8TC024215
SCBCC13S8TC025130	SCBDM33S1TC025029	SCBCP2ZG7TC024287
SCBCD13S4TC025686	SCBDM33S4TC025025	SCBCP2ZG9TC024386
SCBCH13S1TC025701	SCBDP4ZG6TC025074	SCBDM33S1TC024155
SCBCM13S0TC025684	SCBCB13S5TC025024	SCBDM33S1TC024365
SCBCM13S6TC025723	SCBCB13S6TC025016	SCBDP4ZG5TC024398
SCBCM13S9TC025666	SCBCB13S8TC024966	SCBCM13S0TC024356
SCBCM13SXTTC025708	SCBCB13SXTTC024919	SCBCM13S1TC024284
SCBCM1ZG3TC025679	SCBCB13SXTTC024970	SCBCM13S1TC024348
SCBCN13S5TC025323	SCBCJ1ZG0TC024370	SCBCM13S4TC024358
SCBCN13S8TC025364	SCBCM13S3TC024979	SCBCM13S7TC024368
SCBCN13SXTTC025687	SCBCM13S3TC024996	SCBCM1ZGXTTC024156
SCBCN13SXTTC025740	SCBCM13S5TC024465	SCBCN13S2TC024310
SCBCP2ZG0TC025670	SCBCM13S6TC025060	SCBCN13S4TC024342
SCBCP2ZG1TC025712	SCBCM13S7TC024936	SCBCP2ZG0TC024289
SCBCP2ZG2TC025668	SCBCM13S9TC025005	SCBCP2ZG4TC024232
SCBCR2ZG1TC025719	SCBCM13SXTTC025028	SCBDM33S4TC024182
SCBCU13S9TC025733	SCBCM1ZG2TC024992	SCBDM33S6TC024166
SCBDM33S4TC025672	SCBCM1ZG4TC024797	SCBDM33S6TC024300
SCBDN33S0TC024810	SCBCN13S1TC024573	SCBDM3ZG2TC024247
SCBDN33S2TC025599	SCBCN13S2TC024985	SCBDN33S3TC024204
SCBDP4ZG3TC025629	SCBCN13S3TC025045	SCBDN33S8TC024201
SCBDP4ZG4TC025736	SCBCN13S6TC024617	SCBDP4ZG0TC024325
SCBCB13S1TC025618	SCBCN13SXTTC025026	SCBDP4ZG3TC024349
SCBCD13S7TC025620	SCBCP2ZG5TC025048	SCBDP4ZG9TC024338
SCBCJ13S7TC025643	SCBCP2ZG6TC024703	SCBDR4ZG0TC024268
SCBCM13S2TC025637	SCBCP2ZG7TC025035	SCBCN13S1TC024315
SCBCM1ZGXTTC025680	SCBCP2ZG9TC024307	SCBCN13S8TC024277
SCBCN13S0TC025519	SCBCR2ZG1TC025042	SCBCN13S9TC024160

INTERNAL

SCBCN13S9TC025664	SCBCR2ZG3TC025057	SCBCN1ZG6TC024328
SCBCP2ZG0TC025667	SCBDB33S5TC024889	SCBCP2ZG4TC024229
SCBCP2ZG3TC025694	SCBDM33S0TC024115	SCBCP2ZG4TC024280
SCBCP2ZG4TC025297	SCBDM33S3TC025002	SCBCP2ZG6TC024250
SCBCP2ZG4TC025462	SCBDM33S6TC024829	SCBCP2ZG6TC024314
SCBCP2ZG4TC025638	SCBDM33S6TC025009	SCBCP2ZGXTTC024218
SCBCP2ZG6TC025494	SCBDM33S7TC024998	SCBCR2ZG3TC024295
SCBCP2ZG6TC025611	SCBDP4ZG2TC025055	SCBCR2ZG5TC024203
SCBCP2ZG8TC025660	SCBDP4ZG8TC024928	SCBDM33S0TC024261
SCBCP2ZGXTTC025661	SCBDR4ZG4TC024192	SCBDM33S3TC024240
SCBCP2ZGXTTC025675	SCBCB13S6TC024948	SCBDM33S8TC024279
SCBCU13S1TC025354	SCBCB13S8TC024918	SCBDP4ZG5TC024286
SCBCU13S8TC025657	SCBCB13S8TC025020	SCBDP4ZG8TC024265
SCBDM33S3TC025663	SCBCM13S1TC024883	SCBDR4ZG0TC024237
SCBDM33S5TC025583	SCBCM13S2TC025010	SCBDR4ZG4TC024323
SCBDM33S8TC025609	SCBCM13S3TC024965	SCBDR4ZG5TC023973
SCBDN33S2TC025652	SCBCM13S5TC025003	SCBCM13S3TC023783
SCBDP4ZG0TC025636	SCBCM13S7TC025004	SCBCM13S4TC024263
SCBDP4ZG3TC025517	SCBCM13S8TC024914	SCBCM13S6TC024281
SCBDP4ZG6TC025656	SCBCM13S9TC024954	SCBCM13S7TC024239
SCBDP4ZGXTTC025613	SCBCM13S9TC025019	SCBCM13S9TC024257
SCBCB13S0TC025366	SCBCM1ZG7TC024700	SCBCN13S0TC024080
SCBCB13S1TC025361	SCBCN13S2TC024999	SCBCN13S2TC024114
SCBCB13S4TC025631	SCBCN13S2TC025022	SCBCN13S2TC024243
SCBCB13S5TC025556	SCBCN13S5TC024981	SCBCN13S2TC024274
SCBCB13S7TC025509	SCBCP2ZG2TC024861	SCBCN13S3TC024235
SCBCB13S8TC025616	SCBCP2ZG8TC024931	SCBCN13S3TC024266
SCBCB13S9TC025334	SCBCR13SXTTC025015	SCBCN13S9TC024224
SCBCM13S4TC025641	SCBCR2ZG0TC024934	SCBCP2ZG0TC024194
SCBCM13S5TC025650	SCBCR2ZG7TC024929	SCBCP2ZG1TC024107
SCBCM13SXTTC025563	SCBCR2ZGXTTC024326	SCBCP2ZG3TC024206
SCBCM13SXTTC025630	SCBCU13S8TC024587	SCBCP2ZG5TC024241
SCBCM1ZG6TC025210	SCBDM33S5TC024790	SCBCP2ZG8TC024248
SCBCN13S1TC025626	SCBDM33S6TC024975	SCBCP2ZG9TC024260
SCBCN13S3TC025577	SCBDN33S3TC024994	SCBCP2ZGXTTC024154
SCBCN13S7TC025615	SCBDN33S6TC024990	SCBDM33S8TC024170
SCBCN13S8TC025591	SCBDP4ZG3TC024755	SCBDM33S9TC024226
SCBCP2ZG5TC025647	SCBDR4ZG2TC024885	SCBDN33S4TC024275
SCBCP2ZG6TC025592	SCBDR4ZG4TC024032	SCBDN33S5TC024219
SCBCP2ZG7TC025634	SCBCB13S0TC024878	SCBDN33S7TC024254
SCBCP2ZG9TC025585	SCBCB13S2TC024963	SCBDP4ZG4TC024196
SCBCP2ZGXTTC025627	SCBCB13S7TC024912	SCBDP4ZG5TC024272
SCBCU13S3TC025601	SCBCB13S7TC025008	SCBDP4ZG6TC024152
SCBCU13S4TC025624	SCBCM13S0TC024874	SCBDP4ZG7TC024189
SCBCU13S6TC025642	SCBCM13S0TC024924	SCBDP4ZGXTTC024185
SCBDB33S9TC025396	SCBCM13S2TC024908	SCBDR4ZG2TC024045
SCBDM33S2TC025413	SCBCM13S2TC024942	SCBCM13S0TC024227
SCBDM33S8TC025593	SCBCM13S4TC024974	SCBCM13S1TC024236

INTERNAL

SCBDM33SXTC025546	SCBCM13S5TC024904	SCBCM13S2TC024228
SCBDP4ZG0TC025538	SCBCM13S6TC024961	SCBCM13S3TC024190
SCBDP4ZG3TC025405	SCBCN13S4TC024972	SCBCM13S8TC024167
SCBDP4ZG6TC025639	SCBCN13S5TC024821	SCBCM13SXTC024171
SCBDP4ZG7TC025603	SCBCN13S6TC024844	SCBCM13SXTC024221
SCBDR4ZG1TC025607	SCBCN13S8TC024876	SCBCN13S1TC024184
SCBDR4ZG3TC025625	SCBCU13S0TC024969	SCBCN13S4TC024213
SCBCB13S3TC025457	SCBCU13S1TC024902	SCBCN13SXTC024197
SCBCB13S4TC025595	SCBCU13S8TC024766	SCBCP2ZG0TC023921
SCBCB13S7TC025560	SCBDM33S8TC024864	SCBCR2ZG8TC023949
SCBCM13S1TC025564	SCBDN33S4TC024910	SCBDM33S2TC024178
SCBCM13S1TC025581	SCBCB13S0TC024900	SCBDM33S5TC024207
SCBCM13S2TC025203	SCBCB13S1TC024940	SCBDM33S7TC024144
SCBCM13S2TC025606	SCBCB13S5TC024682	SCBDM33S7TC024161
SCBCM13S3TC025579	SCBCM13S5TC024739	SCBDM33S9TC024212
SCBCM13S5TC025356	SCBCM13S6TC024698	SCBDM33SXTC024168
SCBCM13S7TC025567	SCBCM13S6TC024894	SCBDN33S0TC024158
SCBCM13S8TC025187	SCBCM1ZG4TC024637	SCBDN33S7TC024223
SCBCM13S8TC025576	SCBCM1ZG7TC024695	SCBDP4ZG0TC024244
SCBCN13S4TC025507	SCBCM1ZG8TC024852	SCBDP4ZG1TC024057
SCBCN13S7TC024433	SCBCN13S5TC024866	SCBDP4ZG5TC024059
SCBCN13S7TC025582	SCBCN13S6TC024956	SCBDP4ZG5TC024076
SCBCN13S9TC025552	SCBCN13S7TC024898	SCBDP4ZG6TC024233
SCBCN13S9TC025566	SCBDM33S1TC024334	SCBDR4ZG7TC024140
SCBCP2ZG2TC025525	SCBDM33S4TC024456	SCBCM13S2TC024181
SCBCP2ZG4TC025588	SCBDN33S0TC024872	SCBCM13S7TC024130
SCBCP2ZG5TC025597	SCBDN33S8TC024635	SCBCM13S9TC024176
SCBCP2ZG6TC025561	SCBDR4ZG3TC024121	SCBCM13SXTC024087
SCBCP2ZG7TC025553	SCBCB13S2TC024848	SCBCM13SXTC024137
SCBCP2ZGXTC025594	SCBCM13S0TC024891	SCBCN13S4TC024180
SCBCR2ZG1TC025557	SCBCR13S5TC024807	SCBCN13S5TC024172
SCBCR2ZG6TC025537	SCBCR2ZG8TC024812	SCBCN13S6TC024097
SCBCU13S9TC025540	SCBCU13S9TC024842	SCBCP2ZG5TC024143
SCBDM33S1TC025550	SCBDM33S8TC024251	SCBCP2ZGXTC024123
SCBDN33S6TC025508	SCBDP4ZG8TC024850	SCBCP2ZGXTC024199
SCBDN33S7TC025470	SCBDR4ZG8TC024860	SCBCR2ZG8TC024177
SCBDN33S9TC025292	SCBCB13S1TC024856	SCBDN33S0TC024175
SCBDP4ZG1TC025483	SCBCB13S3TC024728	SCBDP4ZG6TC024216
SCBDP4ZG4TC025574	SCBCB13SXTC024757	SCBDP4ZG9TC023707
SCBDP4ZG9TC025554	SCBCD13S3TC024318	SCBCM13S0TC024096
SCBDR4ZG2TC025499	SCBCM13S0TC024390	SCBCM13S2TC023824
SCBDR4ZG8TC025460	SCBCM13S5TC024871	SCBCM13S2TC024150
SCBCB13S0TC025545	SCBCM13S7TC024788	SCBCM13S3TC024111
SCBCB13S6TC025548	SCBCM1ZG4TC024735	SCBCM13S3TC024173
SCBCM13SXTC025451	SCBCM1ZG5TC024629	SCBCM13S6TC023860
SCBCN13S2TC025523	SCBCN13S0TC024709	SCBCM13S7TC023866
SCBCN13S5TC025533	SCBCN13S0TC024743	SCBCM13S7TC024113
SCBCN13SXTC025544	SCBCN13S6TC024827	SCBCN13S0TC024063

INTERNAL

SCBCP2ZGXTC025532	SCBCN13SXTC024684	SCBCN13S5TC024141
SCBCU13S1TC025502	SCBCN1ZG5TC024658	SCBCN13S7TC024089
SCBCU13S5TC025504	SCBCP2ZG1TC024799	SCBCP2ZG0TC024146
SCBDM33S6TC025513	SCBCR2ZG3TC024846	SCBCP2ZG4TC024151
SCBDN33S7TC025534	SCBCR2ZG4TC024855	SCBCP2ZG6TC024054
SCBDP4ZG2TC025489	SCBCR2ZG9TC024673	SCBCR2ZG9TC024110
SCBCB13S0TC025433	SCBCU13S9TC024811	SCBDM33S9TC024131
SCBCB13S3TC025216	SCBDB33S8TC024868	SCBDN33SXTC024118
SCBCB13S9TC025530	SCBDP4ZG1TC024818	SCBDP4ZG4TC024098
SCBCH13S4TC025515	SCBDP4ZG2TC024794	SCBCM13S0TC024079
SCBCJ13S1TC024780	SCBDP4ZG3TC024769	SCBCM13S1TC024088
SCBCN13S0TC025536	SCBDP4ZG4TC024697	SCBCM13S2TC024052
SCBCN13S6TC025475	SCBDP4ZG4TC024778	SCBCM13S2TC024116
SCBCN13S7TC025520	SCBDP4ZG4TC024845	SCBCM13S3TC023959
SCBCN13S9TC025311	SCBDP4ZG5TC024806	SCBCM13S4TC024036
SCBCP2ZG0TC025510	SCBDP4ZG5TC024854	SCBCM13S7TC023964
SCBCP2ZG1TC025337	SCBDP4ZGXTC024834	SCBCM13S7TC023981
SCBCP2ZG1TC025418	SCBCB13S0TC024816	SCBCM13S9TC023884
SCBCP2ZG1TC025516	SCBCB13S2TC024476	SCBCM13S9TC023951
SCBCP2ZG8TC025495	SCBCB13S4TC024835	SCBCM13S9TC024128
SCBCP2ZG9TC025473	SCBCB13S5TC024830	SCBCN13S1TC024105
SCBCU13S0TC025541	SCBCB13S8TC024837	SCBCN13S2TC024100
SCBCU13S4TC025512	SCBCM13S0TC024714	SCBCN13S2TC024145
SCBCU13S9TC024744	SCBCM13S1TC024687	SCBCP2ZG8TC024072
SCBDC33S6TC025496	SCBCM13S4TC024747	SCBCP2ZGXTC024008
SCBDM33S4TC025493	SCBCM13S9TC024825	SCBCR2ZG2TC024126
SCBDM33S6TC025527	SCBCM13S9TC024839	SCBDM33S3TC024027
SCBDN33S2TC025344	SCBCM13SXTC024722	SCBDM33S5TC024109
SCBDN33S7TC025503	SCBCM1ZG2TC024832	SCBDM33S6TC024104
SCBDP4ZG2TC025542	SCBCM1ZG5TC024503	SCBDM33S9TC024078
SCBDP4ZG5TC025521	SCBCM1ZG5TC024677	SCBDN33S4TC024082
SCBDR4ZG7TC025448	SCBCM1ZGXTC024819	SCBDP4ZG0TC024101
SCBDR4ZG8TC025426	SCBCN13S1TC024623	SCBDP4ZG4TC024148
SCBCB13S1TC025215	SCBCN13S4TC024163	SCBDP4ZG6TC024068
SCBCB13S2TC025417	SCBCN13SXTC024376	SCBDP4ZG6TC024135
SCBCB13S3TC025488	SCBCP2ZG4TC024716	SCBDP4ZG7TC024127
SCBCB13S5TC025346	SCBCP2ZG7TC024791	SCBDR4ZG9TC024091
SCBCB13S5TC025492	SCBCR2ZG2TC024305	SCBCM13S4TC023971
SCBCB13S6TC025498	SCBDM33S0TC024745	SCBCM13S7TC024029
SCBCD13S9TC025439	SCBDM33S4TC024621	SCBCM13SXTC024056
SCBCJ1ZG3TC025481	SCBDN33S5TC024740	SCBCN13S0TC023995
SCBCM13S0TC025491	SCBDP4ZG4TC024814	SCBCN13S0TC024094
SCBCM13S2TC025511	SCBCB13S4TC024804	SCBCN13S2TC023979
SCBCM13S3TC025369	SCBCB13S6TC024786	SCBCN13S6TC024066
SCBCM13S3TC025453	SCBCB13S9TC024779	SCBCN13S8TC024005
SCBCM13S3TC025484	SCBCM13S0TC024762	SCBCN13S8TC024103
SCBCM13S5TC025454	SCBCM13S0TC024793	SCBCN13SXTC024085
SCBCM13S7TC025469	SCBCM13S2TC024777	SCBCP2ZG0TC023711

INTERNAL

SCBCM1ZG4TC025478	SCBCM1ZG2TC024751	SCBCP2ZG5TC023798
SCBCN13S6TC025458	SCBCM1ZG5TC024730	SCBCP2ZG5TC024031
SCBCP2ZG4TC025476	SCBCM1ZG7TC024809	SCBCP2ZG8TC024069
SCBCP2ZG5TC025471	SCBCN13S5TC024253	SCBCP2ZG8TC024122
SCBCP2ZG9TC025487	SCBCN13SXTTC024720	SCBCP2ZG9TC024016
SCBCP2ZGXTTC025482	SCBCN1ZG0TC024583	SCBCP2ZGXTTC024025
SCBCR2ZG7TC025501	SCBCP2ZG1TC024771	SCBDM33S2TC023970
SCBCU13SXTTC025465	SCBCU13S4TC024795	SCBDM33S3TC024061
SCBDB33S9TC025253	SCBCU13S6TC024801	SCBDM33S9TC023786
SCBDM33S8TC025464	SCBCU13S9TC024775	SCBDN33S6TC023905
SCBDN33S0TC025455	SCBDM33S0TC024602	SCBDP4ZG3TC023993
SCBDN33S3TC025479	SCBDM33S2TC024388	SCBDP4ZG4TC024070
SCBDP4ZG6TC025401	SCBDP4ZG1TC024012	SCBDP4ZG5TC024112
SCBCB13S0TC025450	SCBDP4ZG6TC024507	SCBDP4ZG8TC023942
SCBCB13S2TC025420	SCBDP4ZG8TC024802	SCBDP4ZG9TC024050
SCBCB13S5TC025251	SCBDU33S2TC024732	SCBDR4ZG8TC024065
SCBCB13S9TC025379	SCBCD13S3TC024724	SCBCM13S6TC023969
SCBCC13S6TC025093	SCBCJ13S6TC024712	SCBCM13S6TC024023
SCBCM13S0TC025443	SCBCM13S1TC024270	SCBCM13S7TC023897
SCBCM13S1TC024950	SCBCM13S1TC024768	SCBCM13SXTTC024011
SCBCM13S6TC025415	SCBCM13S5TC024675	SCBCM13SXTTC024042
SCBCM13S7TC025441	SCBCM13S5TC024756	SCBCN13S3TC024073
SCBCM13S8TC025352	SCBCM13S6TC024653	SCBCN13S5TC024009
SCBCM1ZG6TC024610	SCBCM13SXTTC024753	SCBCP2ZG0TC024034
SCBCM1ZG8TC025435	SCBCM1ZG4TC024671	SCBCP2ZG1TC024060
SCBCP2ZG6TC025446	SCBCM1ZG4TC024704	SCBCP2ZG3TC023976
SCBCR2ZG2TC025437	SCBCM1ZG7TC024664	SCBCP2ZG3TC024075
SCBDM33S1TC025421	SCBCM1ZG8TC024608	SCBCR2ZG0TC024044
SCBDM33S7TC025407	SCBCM1ZGXTTC024495	SCBCR2ZG7TC024039
SCBDM33S7TC025410	SCBCM1ZGXTTC024643	SCBDM33S7TC023883
SCBDP4ZG3TC025288	SCBCN13S0TC024659	SCBDN33S3TC023859
SCBDP4ZG3TC025372	SCBCN13S9TC024773	SCBDN33S7TC024030
SCBDP4ZG6TC025432	SCBCP2ZG8TC024301	SCBDN33S8TC024053
SCBDR4ZG1TC025381	SCBCR13S1TC024710	SCBDP4ZG2TC023984
SCBCB13S6TC025422	SCBCR13S8TC024669	SCBDP4ZG5TC023719
SCBCB13S7TC025414	SCBCU13S6TC024782	SCBDP4ZG5TC023977
SCBCM13S0TC025233	SCBCU13SXTTC024655	SCBDP4ZG5TC024014
SCBCM13S4TC025428	SCBDM33S0TC024597	SCBDP4ZG6TC024006
SCBCM13S7TC025424	SCBDM33S1TC024639	SCBDP4ZG6TC024037
SCBCM13S9TC025408	SCBDM33S4TC024666	SCBDP4ZG6TC024040
SCBCN13S6TC025430	SCBDM3ZG9TC024679	SCBDP4ZG8TC023987
SCBCN13S8TC025395	SCBDN33S6TC024701	SCBDP4ZG8TC024024
SCBCP2ZG2TC025377	SCBDP4ZG4TC024473	SCBDP4ZG9TC024047
SCBDM33S9TC025375	SCBDP4ZG5TC024711	SCBDR4ZG4TC023771
SCBDN33S3TC024879	SCBDP4ZG7TC024726	SCBCM13S8TC023827
SCBDN33S4TC025362	SCBDP4ZG8TC024749	SCBCM13S8TC023939
SCBDN33SXTTC025091	SCBDU33S1TC024530	SCBCN13S6TC024021
SCBDR4ZG6TC025358	SCBCB13S2TC024526	SCBCP2ZG4TC024019

INTERNAL

SCBCC13S7TC025393	SCBCB13SXTC024483	SCBCP2ZG7TC023835
SCBCM13S0TC025328	SCBCM13S3TC024187	SCBCP2ZG8TC024041
SCBCM13S3TC025386	SCBCM13S7TC024631	SCBDM33S0TC023840
SCBCM13S7TC025312	SCBCM1ZG0TC024733	SCBDP4ZG2TC024004
SCBCM13S7TC025388	SCBCM1ZG2TC024510	SCBDP4ZG5TC023946
SCBCM13SXTTC025269	SCBCP2ZG3TC024691	SCBDP4ZG9TC023867
SCBCM13SXTTC025305	SCBCP2ZG6TC024667	SCBDR4ZG6TC023996
SCBCN13S0TC025150	SCBCR2ZG0TC024741	SCBCM13S0TC023997
SCBCN13S0TC025391	SCBCR2ZG9TC024737	SCBCM13S2TC023872
SCBCN13S2TC025389	SCBDM33S1TC024611	SCBCM13S4TC023999
SCBCN13S2TC025411	SCBDM33S7TC024693	SCBCM13S8TC023889
SCBCN13S8TC025235	SCBDM33S8TC024685	SCBCM13S9TC024002
SCBCN13S9TC025177	SCBDM3ZG8TC024480	SCBCN13S0TC023947
SCBCN1ZG0TC025278	SCBDP4ZGXTTC024719	SCBCN13S3TC023957
SCBCN1ZGXTTC025398	SCBDR33S0TC024715	SCBCN13S3TC023991
SCBCP2ZG1TC025399	SCBCB13S1TC024680	SCBCN13S4TC023904
SCBCR2ZG7TC025384	SCBCB13S4TC024625	SCBCN13S5TC023913
SCBDP4ZG5TC025339	SCBCM13S6TC024491	SCBCN13S7TC023900
SCBDP4ZGXTTC025367	SCBCM13S9TC024209	SCBCN13SXTTC023986
SCBDR4ZG1TC025350	SCBCM1ZG4TC024718	SCBCP2ZG1TC023989
SCBDR4ZGXTTC025332	SCBCN13S5TC024706	SCBCP2ZG7TC023916
SCBCB13S0TC025318	SCBCN13S8TC024313	SCBCR2ZG9TC023927
SCBCB13S1TC025330	SCBCN13S8TC024599	SCBDM33S6TC023714
SCBCB13S5TC025315	SCBCR2ZG4TC024662	SCBDP4ZG4TC023811
SCBCD13S7TC025360	SCBCU13S0TC024616	SCBDP4ZG4TC023940
SCBCM13S2TC025301	SCBCU13S3TC024707	SCBDP4ZG5TC023980
SCBCM13S8TC025285	SCBCU13SXTTC024641	SCBDP4ZG7TC023902
SCBCN13S1TC025299	SCBDB33S6TC024321	SCBDP4ZG7TC023950
SCBCN13S5TC025371	SCBDM33S7TC024497	SCBDP4ZGXTTC023845
SCBCN13SXTTC025348	SCBDM33S9TC024565	SCBDR4ZG2TC023932
SCBCP2ZG5TC025373	SCBDM3ZG6TC024607	SCBCM13S1TC023961
SCBCP2ZG7TC025259	SCBDN33S9TC024627	SCBCM13S2TC023953
SCBCR2ZG2TC025342	SCBDN3ZG5TC024689	SCBCN13S5TC023829
SCBDP4ZG6TC025172	SCBDN3ZGXTTC024672	SCBCN13S9TC023879
SCBDP4ZG6TC025219	SCBDP4ZG9TC024615	SCBCP2ZG1TC023846
SCBDP4ZG7TC025164	SCBDR4ZG7TC024414	SCBCP2ZG2TC023967
SCBDP4ZG9TC025246	SCBDU33S1TC024656	SCBCP2ZG3TC023864
SCBDP4ZGXTTC024932	SCBDU33S4TC024554	SCBCP2ZG3TC023945
SCBDP4ZGXTTC025322	SCBCB13S4TC024592	SCBCP2ZG3TC023962
SCBCB13S1TC025280	SCBCB13S8TC024322	SCBCP2ZG5TC023820
SCBCB13S7TC024988	SCBCM13S2TC024603	SCBCP2ZG6TC023941
SCBCB13S8TC025308	SCBCM13S5TC024563	SCBCP2ZG8TC023925
SCBCM13S7TC025228	SCBCM13S5TC024644	SCBCP2ZGXTTC023974
SCBCM13S9TC025201	SCBCM1ZG2TC024541	SCBDM33S4TC023937
SCBCM13S9TC025263	SCBCM1ZGXTTC024528	SCBDM33S6TC023955
SCBCM13S9TC025294	SCBCM1ZGXTTC024562	SCBDM33S9TC023920
SCBCM1ZG2TC025320	SCBCN13S4TC024650	SCBDN33S9TC023963
SCBCN13S4TC025247	SCBCP2ZG0TC024633	SCBDP4ZG1TC023944

INTERNAL

SCBCN13S4TC025295	SCBCU13S1TC024558	SCBDP4ZG3TC023928
SCBCN13S7TC025291	SCBCU13S2TC024505	SCBDP4ZG9TC023917
SCBCN13S9TC025325	SCBCU13S4TC024571	SCBDR4ZG1TC023873
SCBCN13SXTTC024863	SCBDM33S0TC024230	SCBDR4ZG7TC023876
SCBCN13SXTTC025141	SCBDM33S1TC024124	SCBCM13S1TC023877
SCBCP2ZG3TC025310	SCBDM33S4TC024585	SCBCM13S5TC023851
SCBCP2ZG7TC025276	SCBDM33S9TC024548	SCBCN13S6TC023791
SCBCU13S3TC025243	SCBDN33S7TC024478	SCBCP2ZG2TC023919
SCBCU13S8TC025237	SCBDN33S7TC024660	SCBCP2ZG2TC023936
SCBDM33S2TC025265	SCBDP4ZG8TC024590	SCBCP2ZG6TC023938
SCBDM33S3TC025307	SCBDP4ZG9TC024355	SCBCP2ZG8TC023911
SCBDN33S9TC025115	SCBDP4ZGXTTC024560	SCBCP2ZG9TC023822
SCBDN33SXTTC025284	SCBDP4ZGXTTC024574	SCBCR2ZG5TC023892
SCBDP4ZG2TC025279	SCBDU33S2TC024648	SCBDJ33S9TC023909
SCBDP4ZG6TC025205	SCBCB13S4TC024589	SCBDM33S2TC023886
SCBDP4ZG6TC025317	SCBCB13S7TC024425	SCBDM33S9TC023805
SCBDP4ZG8TC025268	SCBCM13S5TC024613	SCBDN33S6TC023838
SCBDP4ZG9TC025313	SCBCM13S7TC024595	SCBDP4ZG0TC023935
SCBDR4ZG0TC025033	SCBCM1ZG2TC024605	SCBDP4ZG3TC023802
SCBDR4ZG3TC025303	SCBCM1ZG5TC024372	SCBCM13S2TC023922
SCBCB13S4TC025287	SCBCN13S0TC024628	SCBCM13S5TC023901
SCBCB13S5TC025282	SCBCN13S5TC023930	SCBCM13S6TC023907
SCBCB13S6TC024822	SCBCN13S8TC024568	SCBCP2ZG2TC023760
SCBCB13S8TC025258	SCBCN1ZG3TC024545	SCBCP2ZG3TC023914
SCBCC13S6TC024977	SCBCN1ZG4TC024604	SCBCP2ZG4TC023887
SCBCD13S7TC024922	SCBCP2ZG5TC024577	SCBCP2ZG6TC023874
SCBCG13S5TC024926	SCBCP2ZGXTTC024543	SCBCP2ZG7TC023933
SCBCM13S4TC025218	SCBCU13S2TC024620	SCBCR2ZG2TC023882
SCBCM13S4TC025266	SCBCU13S5TC024594	SCBCR2ZG9TC023779
SCBCM13S8TC025254	SCBCU13S9TC024601	SCBDM33S2TC023855
SCBCM13SXTTC025031	SCBDM33S2TC024018	SCBDM33S9TC023836
SCBCM1ZG0TC024764	SCBDN3ZG9TC024534	SCBDM33S9TC023898
SCBCN13S2TC024646	SCBDP4ZG6TC024572	SCBDN33S0TC023799
SCBCN13S2TC024887	SCBDP4ZG8TC024511	SCBDP4ZG4TC023923
SCBCN13S4TC025152	SCBCB13S1TC024579	SCBDP4ZG5TC023896
SCBCN13S4TC025264	SCBCB13S5TC024472	SCBDP4ZG8TC023777
SCBCN13S5TC025256	SCBCM13S5TC024532	SCBDP4ZGXTTC023862
SCBCN13SXTTC024619	SCBCM13S7TC024516	SCBDP4ZGXTTC023893
SCBCP2ZG1TC025225	SCBCM1ZG3TC024533	SCBDP4ZGXTTC023912
SCBCP2ZG3TC025274	SCBCN1ZG2TC024553	SCBDP4ZGXTTC023926
SCBCP2ZG4TC025039	SCBCP2ZG0TC024311	SCBDR4ZG1TC023890
SCBCR23S6TC025079	SCBDB33S3TC024258	SCBDR4ZG5TC023746
SCBCR23S9TC025206	SCBDN33S6TC024570	SCBCN13S5TC023720
SCBCR2ZG2TC025289	SCBDP4ZG4TC024540	SCBCR2ZG0TC023895
SCBCR2ZG7TC025191	SCBDR4ZGXTTC024567	SCBDM33S2TC023774
SCBDM33S1TC025273	SCBCM13S5TC024546	SCBCM13S0TC023854
SCBDM33S4TC024652	SCBCM13S6TC024538	SCBCM13S1TC023751
SCBDN33S1TC025061	SCBCM13SXTTC024512	SCBCM13SXTTC023831

INTERNAL

SCBDN33S1TC025271	SCBCN13S1TC024508	SCBCP2ZG0TC023806
SCBDN33S2TC024906	SCBCN13S5TC024513	SCBCP2ZG0TC023837
SCBDP4ZG0TC025250	SCBCN13S9TC024353	SCBCP2ZG0TC023868
SCBDP4ZG4TC025168	SCBCP2ZG6TC024555	SCBCP2ZG1TC023698
SCBDP4ZG5TC025261	SCBCP2ZG9TC024551	SCBCP2ZG1TC023801
SCBDP4ZG5TC025275	SCBCR2ZG5TC024458	SCBCP2ZG5TC023834
SCBDP4ZG8TC025044	SCBCU13S0TC024499	SCBCP2ZG7TC023754
SCBDP4ZG8TC025223	SCBCU13S8TC024525	SCBCP2ZG8TC023813
SCBDR43S4TC025145	SCBCU13S8TC024556	SCBCR2ZG2TC023803
SCBDR4ZG0TC025212	SCBDN33S6TC024536	SCBCR2ZG3TC023812
SCBDR4ZG6TC025229	SCBDN33SXTTC024569	SCBCR2ZG9TC023796
SCBDR4ZG7TC025241	SCBDP4ZG4TC024487	SCBDM33S1TC023815
SCBCM13S5TC025230	SCBDP4ZG5TC024501	SCBDM33S9TC023870
SCBCM13S9TC025196	SCBDR4ZG4TC024550	SCBDM33SXTTC023697
SCBCN13S1TC025125	SCBDR4ZGXTTC024522	SCBDP4ZG1TC023880
SCBCN13S3TC024896	SCBDU33S2TC024360	SCBDP4ZG3TC023850
SCBCP2ZG0TC024843	SCBCB13S4TC024463	SCBDP4ZG4TC023808
SCBCR2ZG9TC025208	SCBCG13S1TC024521	SCBDP4ZG4TC023825
SCBCU13S6TC025012	SCBCM13S0TC023983	SCBDP4ZG5TC023722
SCBDM33S1TC025189	SCBCM13S9TC024520	SCBDP4ZG6TC023843
SCBDM33S3TC025226	SCBCN13S0TC024404	SCBDP4ZG7TC023821
SCBCB13SXTTC025245	SCBCN13S1TC024489	SCBDP4ZGXTTC023795
SCBCM13S1TC025192	SCBCN13S9TC024515	SCBDP4ZGXTTC023828
SCBCM13S4TC025199	SCBCN13SXTTC024474	SCBDR4ZG0TC023833
SCBCM13S4TC025204	SCBCR2ZG6TC024484	SCBCM13S3TC023699
SCBCM13S4TC025221	SCBDM33S0TC024518	SCBCM13S4TC023842
SCBCM13S9TC025120	SCBDM33S3TC023749	SCBCM13S6TC023857
SCBCN13S1TC025240	SCBDM33S6TC024412	SCBCN13S7TC023816
SCBCP2ZG2TC025184	SCBDM33S8TC024363	SCBCN13S9TC023848
SCBCP2ZG8TC024881	SCBDN33S3TC024493	SCBCP2ZG2TC023788
SCBCP2ZG9TC025232	SCBDN33S4TC024504	SCBCP2ZG6TC023762
SCBDM33S9TC025182	SCBDN33SXTTC024524	SCBCP2ZG8TC023794
SCBDM33SXTTC024946	SCBDP4ZG0TC023966	SCBCP2ZG9TC023769
SCBDN33S0TC025214	SCBDP4ZG0TC024373	SCBDM33S4TC023792
SCBDN33S2TC025179	SCBDP4ZG1TC024429	SCBDM33SXTTC023747
SCBDP4ZG5TC025065	SCBCB13S0TC024332	SCBDP4ZG1TC023703
SCBDP4ZG7TC025052	SCBCB13S1TC024467	SCBDP4ZG1TC023765
SCBDP4ZG7TC025147	SCBCB13S1TC024470	SCBDP4ZG3TC023735
SCBCB13SXTTC025133	SCBCB13S5TC024455	SCBDP4ZG6TC023759
SCBCD13S6TC024944	SCBCB13S8TC024451	SCBDP4ZGXTTC023733
SCBCM13S2TC025167	SCBCB13S9TC024460	SCBDR4ZG4TC023818
SCBCM13S4TC025171	SCBCM13S5TC024191	SCBCM13S5TC023767
SCBCM13S9TC025165	SCBCN13S7TC024481	SCBCM13S6TC023809
SCBCN13S0TC024967	SCBCN1ZG1TC024432	SCBCM13S7TC023785
SCBCN13S0TC025181	SCBCR2ZG0TC024271	SCBCM13S9TC023772
SCBCN13S1TC025173	SCBCR2ZG6TC024453	SCBCN13S1TC023732
SCBCN13S4TC025006	SCBDB33S5TC024309	SCBCN13S3TC023781
SCBCN13S5TC024477	SCBDM33S2TC024035	SCBCN13S9TC023817

INTERNAL

SCBCN13SXTC025138	SCBDM33S6TC024443	SCBCP2ZG2TC023743
SCBCN13SXTC025155	SCBDM33SXTC024462	SCBCP2ZG2TC023757
SCBCP2ZG9TC025148	SCBDN33S4TC024454	SCBCP2ZG3TC023704
SCBCP2ZGXTC025143	SCBDN33S4TC024468	SCBCP2ZG5TC023736
SCBDB33SXTC024581	SCBDN33S4TC024485	SCBCP2ZG7TC023690
SCBDM33S2TC025153	SCBDR4ZG2TC024367	SCBCP2ZG7TC023706
SCBDM33S8TC025013	SCBDR4ZGXTC024441	SCBCP2ZG7TC023723
SCBDN33S4TC024986	SCBCB13S0TC024444	SCBCP2ZGXTC023764
SCBDN33S9TC025194	SCBCB13S7TC024411	SCBCP2ZGXTC023778
SCBDP4ZG0TC025197	SCBCB13S7TC024439	SCBCR2ZG0TC023718
SCBDP4ZG6TC025186	SCBCM13S7TC024046	SCBCR2ZG1TC023775
SCBDR4ZG7TC024784	SCBCM13S7TC024435	SCBCR2ZG3TC023695
SCBCB13S3TC025135	SCBCM1ZG5TC024419	SCBCR2ZG3TC023745
SCBCB13S4TC025144	SCBCN13S3TC024297	SCBCR2ZG6TC023738
SCBCB13S8TC024983	SCBCN13S4TC024406	SCBCR2ZG7TC023702
SCBCD13S8TC023908	SCBCN13S6TC024245	SCBCR2ZG8TC023692
SCBCM13S2TC025086	SCBCN13S9TC024448	SCBCR2ZGXTC023709
SCBCM13S3TC025162	SCBCN1ZG4TC024344	SCBDM33S0TC023742
SCBCM13S7TC024824	SCBCN1ZG9TC024436	SCBDM33S4TC023789
SCBCM13S7TC025083	SCBCP2ZG8TC024119	SCBDM33S9TC023691
SCBCM13S7TC025116	SCBCR2ZG4TC024399	SCBDN33S1TC023780
SCBCM13S9TC025103	SCBDB33S6TC024383	SCBDN33S7TC023752
SCBCM13SXTC025076	SCBDN33S5TC024446	SCBDP4ZG2TC023726
SCBCN13S7TC025128	SCBDN33S8TC024327	SCBDP4ZG6TC023700
SCBCN13SXTC025088	SCBDP4ZG0TC024437	SCBDP4ZG8TC023729
SCBCN1ZG9TC025070	SCBDP4ZG2TC024424	SCBDR4ZG1TC023694
SCBCP2ZG1TC025175	SCBDP4ZG5TC024000	SCBDR4ZG7TC023716
SCBCP2ZG3TC025159	SCBDP4ZG7TC024449	SCBCM13S1TC023734
SCBCR2ZG6TC025053	SCBCB13S2TC024395	SCBCM13S6TC023731
SCBCU13SXTC025157	SCBCB13S4TC024396	SCBCM13S9TC023741
SCBDN33S0TC025021	SCBCB13S6TC024402	SCBCN13S4TC023708
SCBDN33S1TC025058	SCBCB13SXTC024421	SCBDP4ZG9TC023495
SCBDP4ZG0TC025037	SCBCD13S8TC024427	SCBCN13S4TC023725
SCBDP4ZG2TC025122	SCBCM13S1TC024382	SCBCN13S5TC023748
SCBDP4ZG3TC025095	SCBCM13S3TC024416	SCBCN13S8TC023727
SCBDR4ZG0TC025131	SCBCM13S4TC024294	SCBDM33S2TC023712
SCBDR4ZG1TC025137	SCBCM13S4TC024361	SCBDN33S4TC023739
SCBDR4ZG4TC025049	SCBCM13S5TC024255	SCBDM33S5TC023493
SCBCB13S4TC025001	SCBCM13S5TC024269	
SCBCB13S7TC025090	SCBCM13SXTC024381	
SCBCB13S8TC024952	SCBCM13SXTC024431	
SCBCJ13S1TC024858	SCBCN13S3TC024333	
SCBCM13S3TC024870	SCBCN13S5TC024298	
SCBCM13S7TC025097	SCBCN13S5TC024320	
SCBCM1ZG8TC024575	SCBCN13S5TC024379	
SCBCN13S0TC024760	SCBCN13S7TC024335	
SCBCN13S3TC025126	SCBCR2ZG2TC024420	
SCBCN13S5TC024916	SCBDM33S4TC024392	

INTERNAL

SCBCN13S7TC025081	SCBDM33S7TC024385
SCBCN13S8TC024960	SCBDM33S7TC024418
SCBCN13S9TC024921	SCBDM33S8TC024282
SCBCP2ZG2TC025119	SCBDP4ZG1TC024303
SCBCP2ZG6TC025043	SCBDP4ZG4TC024330
SCBCP2ZG9TC025036	SCBDP4ZG4TC024408