

Technical Service Bulletin

Topic	Failure of the Door Subframe Mounting Housing Continental GT/GTC & Flying Spur
Market area	Bentley: worldwide (2WBE),China 796 VW Import Comp. Ltd (Vico), Beijing (6796)
Brand	Bentley
Transaction No.	2078709/1
Level	EH
Status	Released for publishing
Release date	Sep 8, 2025

New customer code

Object of complaint	Complaint type	Position
body attachments and installations -> doors	functionality	

Vehicle data

Continental GT/GTC & Flying Spur

Sales types

Type	MY	Brand	Designation	Engine code	Gearbox code	Final drive code
3S3*	2018	E		*	*	*
3S3*	2019	E		*	*	*
3S3*	2020	E		*	*	*
3S3*	2021	E		*	*	*
3S3*	2022	E		*	*	*
3S3*	2023	E		*	*	*
3S3*	2024	E		*	*	*
3S4*	2019	E		*	*	*
3S4*	2020	E		*	*	*
3S4*	2021	E		*	*	*
3S4*	2022	E		*	*	*
3S4*	2023	E		*	*	*
3S4*	2024	E		*	*	*
Z23*	2025	E		*	*	*
Z24*	2025	E		*	*	*

ZG2*	2020	E		*	*	*
ZG2*	2021	E		*	*	*
ZG2*	2022	E		*	*	*
ZG2*	2023	E		*	*	*
ZG2*	2024	E		*	*	*

Documents

Document name
master.xml

Condition

Failure of the door subframe mounting housing

Technical Background

A new kit part has been created, to prevent replacement of the full assembly (including the latch motor) when the door subframe mounting housing suffers a failure.

Production Solution

-

Service

When failure of the door subframe mounting housing occurs (as shown in figure 1), the retailer is advised to order the relevant kit part (see parts information) and carry out the necessary repairs.

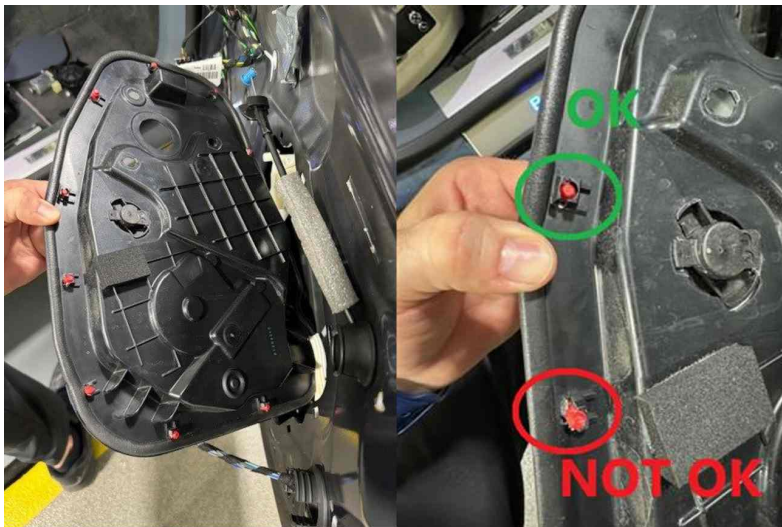


Figure 1

1. Remove the relevant door trim panel. Refer to ElsaPro, Repair Group 70
2. Remove the door power latch drive unit. Refer to ElsaPro, Repair Group 57
3. Re-fit the relevant door power latch drive to the new door trim panel (see parts information)
4. Re-fit the new door trim panel, ensuring that the door power latch drive unit has been re-used from the old assembly part. Refer to ElsaPro, Repair Group 70.

Warranty

Warranty Type 110 or 910

Damage Service Number 70 62

Damage Code 00 10

Time to remove & refit Continental GT/GTC door foil

Labour Operation Code 70 62 19 00

Time 50 TU

Time to remove & refit Flying Spur front door foil

Labour Operation Code 70 62 19 00

Time 40 TU

Time to remove & refit Flying Spur rear door foil

Labour Operation Code 70 62 19 05

Time 60 TU

Required Parts and Tools

3SD 898 308 – LH Cover for inner door panel kit (Continental GT/GTC door)

3SD 898 308 A – RH Cover for inner door panel kit (Continental GT/GTC door)

3SE 898 308 – LH Cover for inner door panel kit (Flying Spur front door)

3SE 898 308 A – RH Cover for inner door panel kit (Flying Spur front door)

3SE 898 308 B – LH Cover for inner door panel kit (Flying Spur rear door)

3SE 898 308 C – RH Cover for inner door panel kit (Flying Spur rear door)

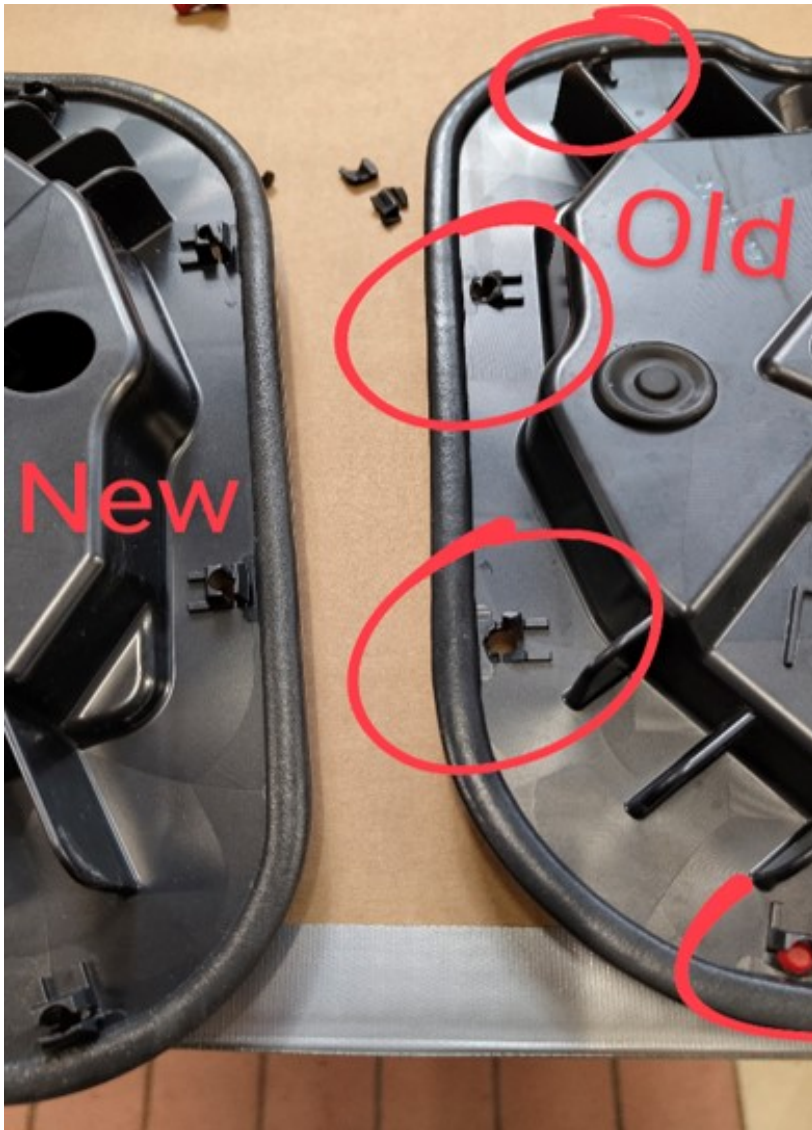


Figure 2 – Comparison between the old part and new part

Refer to ETKA parts catalogue