



# Service Bulletin

Bulletin No.: PIP5927C

Date: September, 2025

## PRELIMINARY INFORMATION

**Subject: Diagnostic Tip: Possible DTC P0237 P0101 P1101 or P0299 Reduced Power Potential Damage To Charge Air Inlet Hose At Turbocharger**

Brand:	Model:	Model Year:		VIN:		Engine:	Transmission:
		from	to	from	to		
Chevrolet	Equinox	2023 - 2026		All	All	1.5 LSD	All
GMC	Terrain	2023 - 2026		All	All	1.5 LSD	All

<b>Involved Region or Country</b>	North America
<b>Condition</b>	DTC P0237 P0101 P1101 or P0299 reduced power
<b>Cause</b>	Potential damage to Charge Air Inlet Pipe at Turbocharger

### Correction

If you encounter one of the above vehicles that has reduced power with DTC p0237, P0101, P1101, or P0299.

Inspect the Charge Air Inlet Pipe at the Turbocharger to see if the anti-abrasion sleeve shows signs of being shredded or split.

If this type of damage has been identified remove the Charge Air Inlet Hose assembly and inspect the Charge Air hose beneath the abrasion sleeve for signs of being split.

This type of damage would allow the hose to swell under pressure damaging the abrasion sleeve and altering the readings within the boost control system or create a potential air leak.

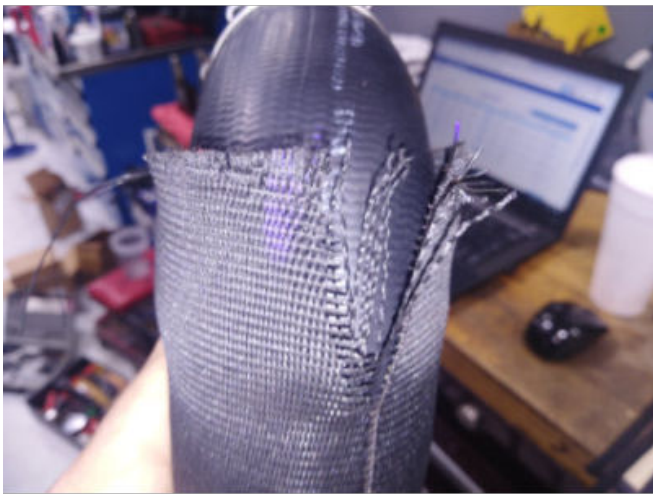
Pictures below show damage to abrasion sleeve on Charge Air Inlet Hose.

#1



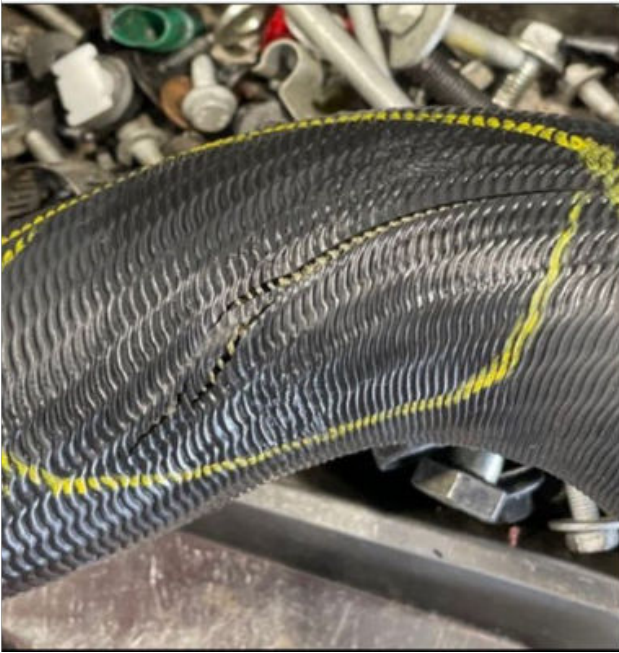
6371857

#2



6371858

#3 Picture below inside the circled area shows damage to inner hose beneath abrasion sleeve



6371859

Replace Charge Air Inlet Pipe assembly using latest parts listed in EPC.

<b>Version</b>	4
<b>Modified</b>	06/13/2023 - Created on. 05/21/2024- Updated to include 2024 model year. 09/03/2024- Updated to include 2025 model year. 09/29/2025- Updated to include 2026 model year

