

September 19, 2025

Version 1

## Product Update: 2026 CR-V SRS for EDR Software Update

### APPLIES TO

Year	Model	Trim Level	VIN Range
2026	CR-V	LX, EX, and EX-L	Check the iN VIN status for eligibility.

### BACKGROUND

Due to an error with the CAN settings, the vehicle's Event Data Recorder (EDR) might not record brake switch function and prevent the SRS unit from receiving and storing brake information.

### CUSTOMER NOTIFICATION

Owners of affected vehicles will be sent a notification of this product update.

Do an iN VIN status inquiry to make sure the vehicle is shown as eligible.

Some vehicles affected by this campaign may be in your new or used vehicle inventory. Repair these vehicles before they are sold.

### CORRECTIVE ACTION

Update the SRS unit software.

### WARRANTY CLAIM INFORMATION

#### Repair Procedure A

Operation Number	Description	Flat Rate Time	Defect Code	Symptom Code	Template ID	Failed Part Number
7515A9	Update the SRS Software	0.4hr	6ZS00	VMV00	A25085A	77960-3A2-A81
A	Do an all-DTC check	0.1hr				

#### Repair Procedure B

7511D3	Replace the SRS Unit Assembly (includes photo) and (includes the time to attempt the SRS software update in Procedure A)	1.1hr	6ZS00	VMV00	A25085B	77960-3A2-A81
--------	--	-------	-------	-------	---------	---------------

NOTE: For vehicles receiving a **new** SRS unit, a photo of the HDS screen showing update failure **must be included** when submitting a warranty claim. Failure to provide a photo of the HDS screen may result in a claim debit.

**CUSTOMER INFORMATION:** The information in this bulletin is intended for use only by skilled technicians who have the proper tools, equipment, and training to correctly and safely maintain your vehicle. These procedures should not be attempted by "do-it-yourselfers," and you should not assume this bulletin applies to your vehicle, or that your vehicle has the condition described. To determine whether this information applies, contact an authorized Honda automobile dealer.

## SOFTWARE INFORMATION

Before beginning the repair, make sure all diagnostic and reprogramming software are updated as listed.

i-HDS Software Version	1.010.011 or later
HDS Software Version	3.105.036 or later
Honda ECU Reprogramming	4.7.0.0 or later

Update only the systems and software listed in this service bulletin.

Year/Model	Vehicle System	Program ID (or later)
2026 CR-V	SRS	77959-3A2-A830

### NOTE:

- Use the Midtronics DCA8-8000 Dynamic Diagnostic Charging System in Reflash Mode, or the Associated Equipment Corporation ESS 6100 100A Smart Charger in Power Supply Mode | DIAG+, directly to the vehicle's 12-volt battery. Leave it connected during the entire procedure to maintain a steady voltage.
- **Do not** use the GR8-110P because the vehicle requires a steady electrical current.
- **Do not** use a lithium-ion jump pack to supply power due to the pulses of high amperage that do not provide consistent power to the battery during reprogramming.
- If the vehicle's 12-volt battery drops below 10 volts during the update, the programming status bar may not present accurately, or the Honda ECU Reprogramming application may display an error message.
- Control module failure caused by the improper completion of a software update (early key cycle, low battery voltage, disconnected DLC cable, etc.) is **NOT** covered by warranty.
- If an error occurs during the update or the i-HDS freezes, **DO NOT disconnect the battery or turn the ignition to OFF**. Reboot the i-HDS and start over.
- To prevent control unit damage, do not operate anything electrical (headlights, audio system, brakes, A/C, power windows, door locks, etc.) during the update.
- Do not use the **MongoosePRO VIC** for this service bulletin as it is not an American Honda-approved device.
- Unnecessary or incorrect repairs resulting from a failure to update the diagnostic and reprogramming software are **NOT** covered under warranty.
- Warranty reimbursement for technician labor is not allowed for routine checking/installation of any available software update.
- This update will not require entering a service bulletin number.

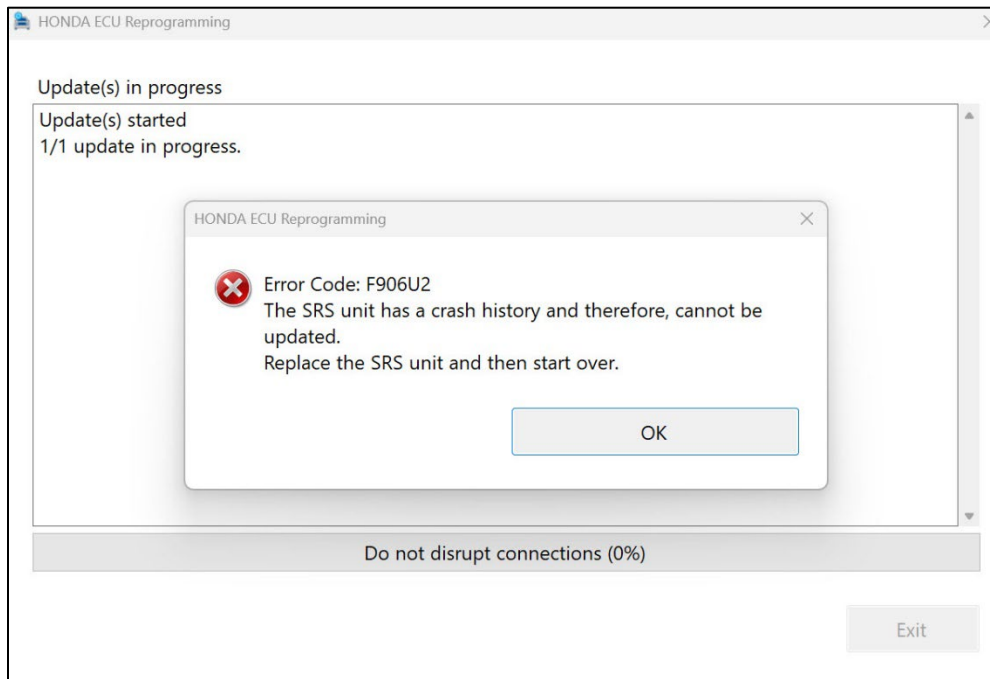
## REPAIR PROCEDURE A

### SRS Software Update

1. Make sure the 12-volt battery is fully charged before starting an update.
2. Connect a charger directly to the vehicle's 12-volt battery and leave it connected during the entire procedure to maintain a steady voltage.
3. Update the SRS software using the ECU Reprogramming Application with the DST-i. Refer to Service Bulletin 22-100, [Updating Control Units/Modules with the ECU Reprogramming Application](#).

#### NOTE:

- If the SRS unit cannot be updated and displays the following error message, proceed to REPAIR PROCEDURE B.
- Order the parts required **ONLY** if the unit has failed to receive the update, a photo of the HDS screen failure **will be required** for warranty processing.
- Use the Parts Catalog and the VIN information to ensure correct parts replacement. Make sure the 3 ground bolts are ordered and replaced.



4. Perform [SRS Unit Update](#).
5. Do an **ALL DTC CHECK** to clear any codes that may have set during the update.

### After SRS Software Update

6. Perform [Yaw Rate Acceleration Neutral Position Memorization](#).
7. Perform [Front Passenger's Weight Sensor Initialization](#).

## REPAIR PROCEDURE B

### CAUTION

Before doing repairs or service:

- [Review the SRS component locations.](#)
- [Review the precautions and procedures.](#)
- Wait at least 3 minutes after disconnecting the 12 volt negative battery terminal.

1. Apply the parking brake.
2. Remove the center console assembly and replace the SRS unit. ([Click HERE](#))