

Condition

Applicable Vehicles					
Model(s)	Year	Eng. Code	Trans. Code	VIN Range From	VIN Range To
Atlas 4MOTION	2024 - 2026	2.0T (DRKB)	ALL	ALL	ALL
Atlas Cross Sport 4MOTION	2024 - 2026	2.0T (DRKB)	ALL	ALL	ALL

Revision Table			
Instance Number	Published Date	Version Number	Reason For Update
2079347/1	09/17/2025	39-25-01	Original publication.

Customer complaint of oil leak from front of vehicle. Oil leak or residue found on the bevel box.

Technical Background

In rare instances, the Bevel Box may develop a leak. However, in many cases, oil observed on or around the Bevel Box is not due to a gear oil leak from the unit itself. Instead, it may originate from engine oil leaks at other locations.

Before deeming the bevel box as the leaking component, please consider the alternative areas that the leak could be coming from. This Technical Bulletin provides guidance to assist in accurately diagnosing the source of oil leaks in the area.

Production Solution

Not Applicable.

Service

Prior to considering Bevel Box replacement, it may be helpful to review the following areas for potential oil leaks. Oil found on or near the Bevel Box is not always indicative of a gear oil leak from the unit itself.

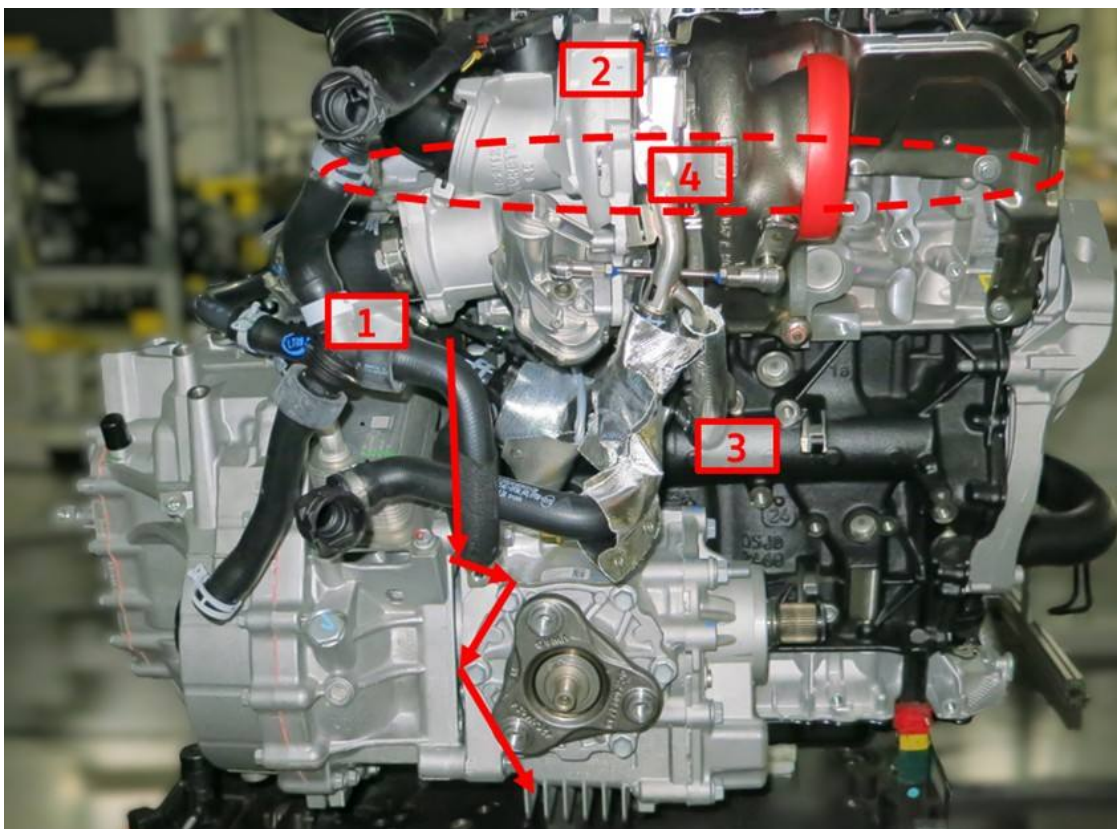
NOTICE

If the source of the leak is unclear, cleaning the area and using UV dye in the engine oil may assist in identifying the origin.

Listed below are known areas of motor oil leakage illustrated on Figure 1:

#	Location	Possible Cause
1	Turbocharger Inlet Pipe	Oil Separator Failure
2	Turbocharger Oil Supply Line	O-ring damaged
3	Turbocharger Oil Return Line	O-ring damaged
4	Cylinder Head Cover	Loose fasteners

Figure 1:

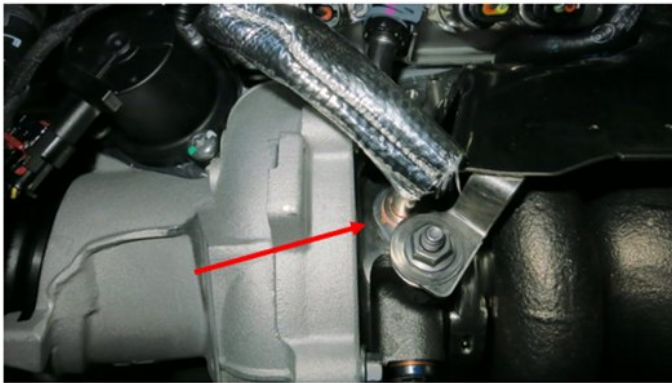


1. Motor Oil Leak/Drip from Turbocharger Inlet Pipe – Oil Separator Failure

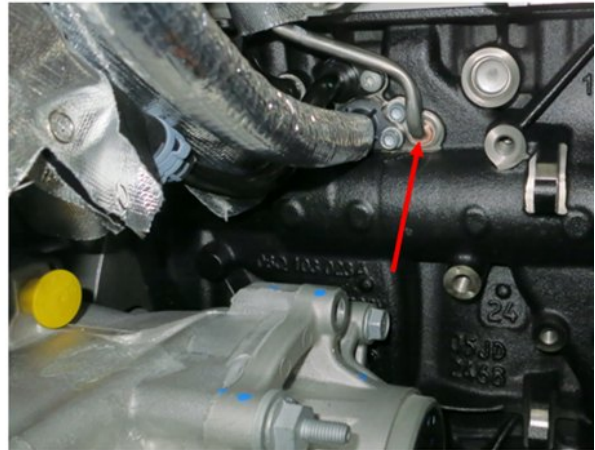


2 & 3. Motor Oil Leak/Drip from Turbocharger Oil Supply/Return Lines – Damaged O-rings

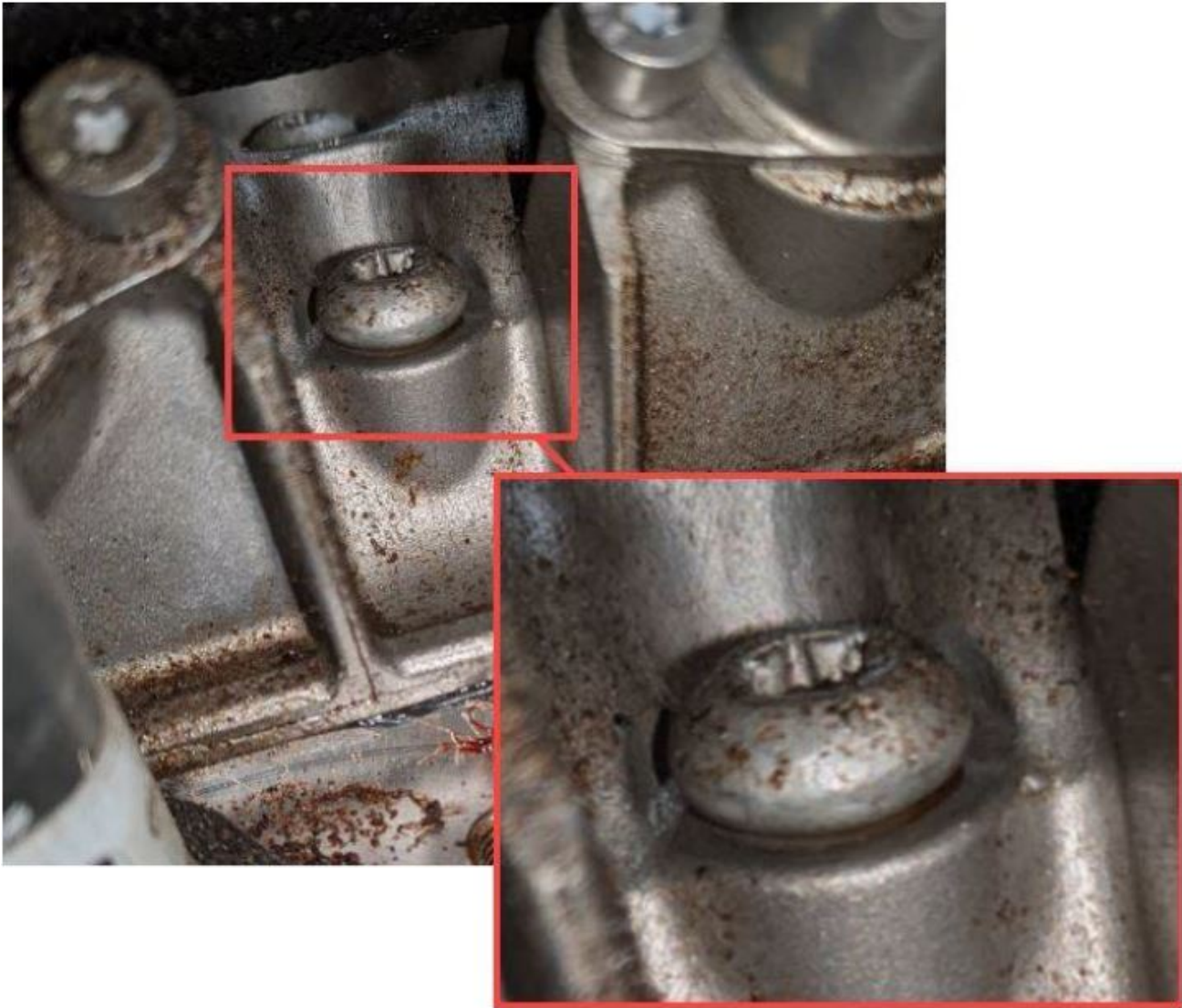
Supply line



Return line



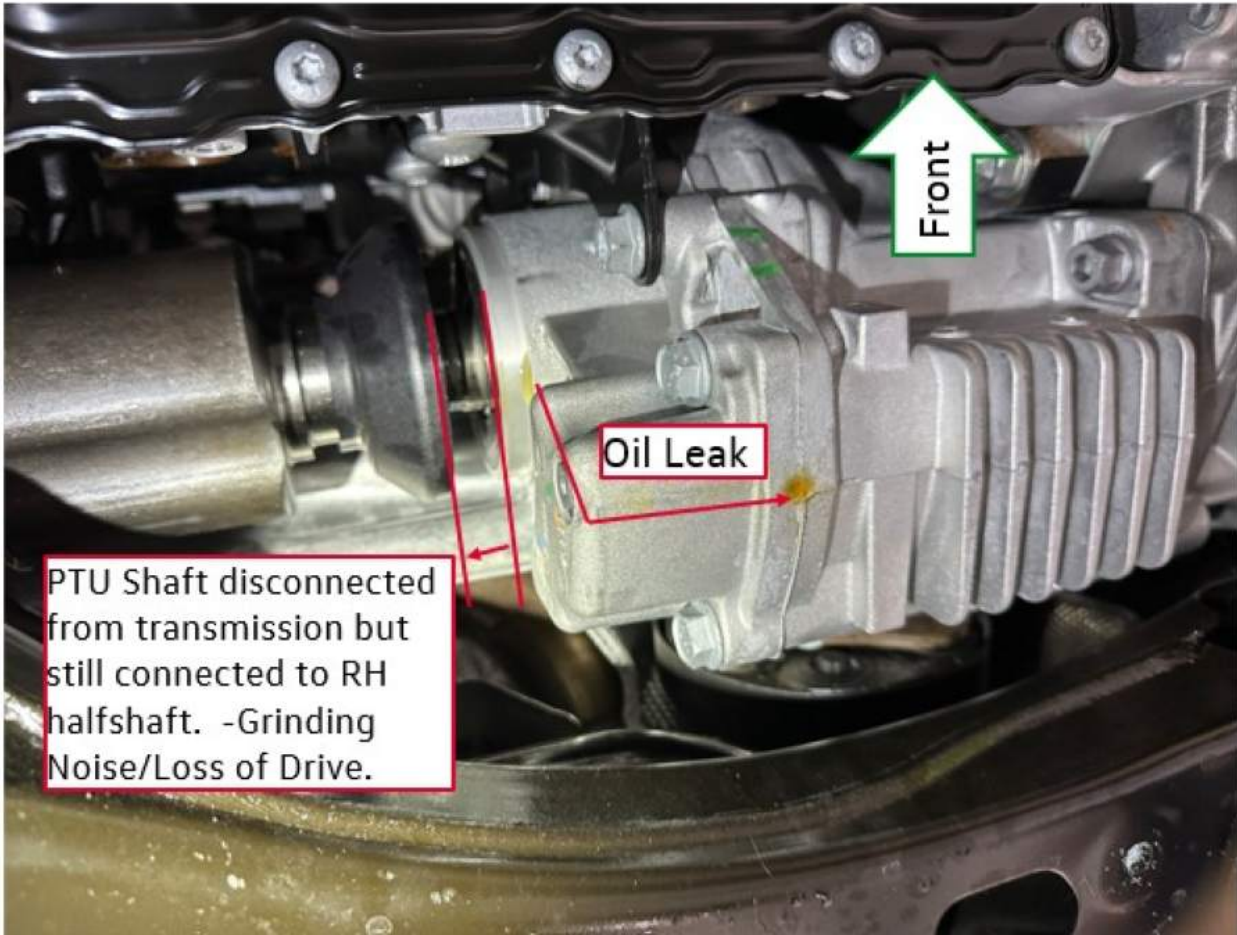
4. Motor Oil Leak/Drip from Cylinder Head Cover – Loose Fasteners



Bevel Box Gear Oil Leak

Gear oil may leak from the Bevel Box if the link shaft is not properly clipped or is out of position.

1. Leakage from the passenger side of the Bevel Box can occur when the link shaft circlip is not fully seated in the grooves of the transmission side gear.
2. In some cases, the circlip may be missing entirely.
3. If this condition appears to be present, inspection of the Bevel Box may help confirm whether the circlip is properly seated or missing.
4. If the circlip is missing, verify that it is still not lodged in the transmission side gear. This condition may be documented with photographs. Bevel Box replacement may be considered depending on findings.
5. It may also be useful to inspect the splines on the transmission side gear for signs of damage.



PTU Shaft disconnected from transmission but still connected to RH halfshaft. -Grinding Noise/Loss of Drive.



Note: Any grease found in this area is not a sign of a leak. Occasionally, grease from the splines can work its way out of the shroud as the shaft turns.

Warranty

Informational only.

Required Parts and Tools

Not Applicable.

Additional Information

All part and service references provided in this Technical Bulletin are subject to change and/or removal. Always check with your Parts Dept. and Repair Manuals for the latest information.

© 2025 Volkswagen Group of America, Inc. All rights reserved. Information contained in this document is based on the latest information available at the time of printing and is subject to the copyright and other intellectual property rights of Volkswagen Group of America, Inc., its affiliated companies and its licensors. All rights are reserved to make changes at any time without notice. No part of this document may be reproduced, stored in a retrieval system, or transmitted in any form or by any means, electronic, mechanical, photocopying, recording, or otherwise, nor may these materials be modified or reposted to other sites, without the prior expressed written permission of the publisher.