

| | | | | | |
|---------------------------|--|--|--------------------|------------------|-----------|
| REFERENCE: | TSB: 08-266-25 REV. A GROUP: 08 - Electrical | Date: | September 25, 2025 | REVISION: | 08-266-25 |
| VEHICLES AFFECTED: | <p>2021 - **2024** (WL) Jeep Grand Cherokee / Grand Cherokee L This bulletin applies to vehicles equipped with one of the following radios:</p> <ul style="list-style-type: none"> • Uconnect 5 Nav w 10.1" Display (KOR) (Sales Code URN). • Uconnect 5 Nav w 8.4" Display (KOR) (Sales Code URL). | <p>MARKET APPLICABILITY:</p> <p><input type="checkbox"/> NA <input type="checkbox"/> MEA <input type="checkbox"/> SA <input checked="" type="checkbox"/> IAP <input type="checkbox"/> EE <input type="checkbox"/> CH</p> <p>NOTE: This bulletin applies to India & Asia Pacific markets.</p> | | | |
| CUSTOMER SYMPTOM: | <p>Customers may experience one or more of the following:</p> <ul style="list-style-type: none"> • **T-maps navigation feature is intermittently not available due to map loading. • When the navigation speed alarm margin is set and the while driving the vehicle between the speed limit and the set margin, the navigation speed alarm will sound off continuously and the user is unable to control the volume. • After setting a navigation destination and then the customer is following the navigation route, the navigation system will stop operating. • Navigation touch screen menu is inoperable after setting a navigation destination. The home screen widget will be black and the navigation display map will no longer show the navigation route.** • WI-FI Software update pop up is being triggered in non connected vehicles. • Vehicle Forward Collision Warning must have two options: OFF/ Warning + Active Braking. • Temperature shows at upper left and right of center display highlights opposite side of what temperature hard switch is pressed. Affects RHD only. • With key on and radio on, The radio display freezes then restarts (Rearview Camera (RVC) functions normally). • Radio is taking more than one minute to start after starting the engine (RVC functions normally). • System displays a blank screen in E-Hybrid tab when user switches into dark-theme mode (RVC functions normally). | | | | |
| CAUSE: | Software improvements | | | | |

This bulletin supersedes Technical Service Bulletin (TSB) 08-266-25, date of issue August 16, 2025, which should be removed from your files. All revisions are highlighted with **asterisks and include an additional model year, new customer symptoms, new software level, new LOPs, updated Repair Summary, Claims Data and Repair Procedure steps. Other changes not asterisked include the TSB title name change.**

REPAIR SUMMARY:

This bulletin involves inspecting and if required, updating the radio software level to ****U40.20****. Depending on the radio's current software level the radio may need a one or two USB update.

CLAIMS DATA:

| Labor Operation No: | Labor Description | Skill Category | Labor Time |
|---------------------|---|---------------------------------|------------|
| 18-60-02-AR | Radio, Software - Create USB Jump Drive from Uconnect Website (One Time Only) U29.42 (0 - Introduction) | 6 - Electrical and Body Systems | 0.2 Hrs. |
| **18-60-02-B5 | Radio, Software - Create USB Jump Drive from Uconnect Website (One Time Only) **U40.20** (0 - Introduction) | 6 - Electrical and Body Systems | 0.2 Hrs. |
| 18-60-02-B6 | Radio - Inspect Software Level and Perform Software Update (One Step Update) (0 - Introduction) | 6 - Electrical and Body Systems | 0.5 Hrs. |
| 18-60-02-B7 | Radio - Inspect Software Level and Perform Software Update (Two Step Update) (0 - Introduction) | 6 - Electrical and Body Systems | 0.9 Hrs.** |
| Failure Code | CC | Customer Concern | |

The dealer must use failure code CC with this Technical Service Bulletin.

- If the customer's concern matches the SYMPTOM identified in the Technical Service Bulletin, failure code CC is to be used.
- When utilizing this failure code, the 3C's (customer's concern, cause and correction) must be provided for processing Technical Service Bulletin flash/reprogramming conditions.

DIAGNOSIS:

Using a Scan Tool (wiTECH) with the appropriate Diagnostic Procedures available in DealerCONNECT/ Service Library, verify all related systems are functioning as designed. If Diagnostic Trouble Codes (DTCs) or symptom conditions, other than the ones listed above are present, record the issues on the repair order and repair as necessary before proceeding further with this bulletin.

If the customer describes any of the symptoms listed above in the customer symptom section, perform the Repair Procedure.

SPECIAL TOOLS/EQUIPMENT:

| Description | Ref. No. | Notes |
|----------------------|----------|-------|
| wiTECH or Equivalent | – | – |

REPAIR PROCEDURE:

NOTE: Check and update display module software if needed before performing radio update.

NOTE: Check and update Telematics Box Module (TBM) software after performing radio update.

NOTE: A **32GB and/or 8GB**** USB flash drive is required for this update. It is also recommended to use a quality, name brand (Kingston®) flash drive over a generic USB flash drive.**

1. Check if the radio software has been updated. Go to “Vehicle Settings” then select "System Information" and look for “Radio Version”.
2. What is the current radio software level (Application Version)?
 - ****U40.20**** or higher >>> The radio software is already up to date. Normal diagnostics should be performed.
 - At or above U29.42 and under ****U40.20**** >>> The radio will only need one USB update. Proceed to [Step 3](#).
 - Under U29.42 >>> The radio will need two USB updates. ****First update to U29.42 and then to U40.20.**** Proceed to [Step 3](#).

NOTE: ● For the U29.42 update use a **32**** GB flash drive.
● For the ****U40.20** update use a **8**** GB flash drive.**

3. Has a ****32GB or 8GB**** USB flash drive been created?
 - YES>>> Proceed to [Step 12](#).
 - NO>>> Proceed to [Step 4](#).
4. Go to DealerCONNECT>Service>Uconnect Command Center>Uconnect>More Information >Dealer software downloads to download the files.
5. If a security message appears “Do you want to view only the web page content that was delivered securely?” [Fig. 1](#). Press “No” to continue.

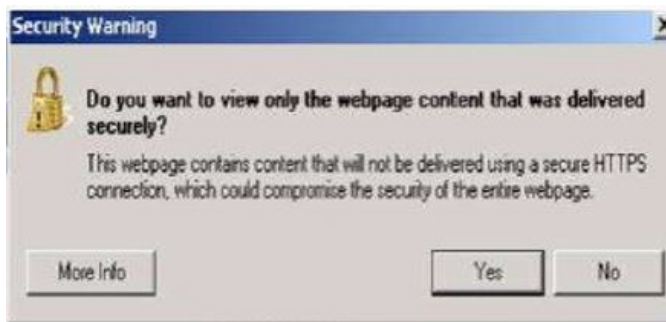


Fig. 1
Pop-Up Security Message

NOTE: If the software cannot be downloaded, make sure you have proper security access. If not, have the Service Manager or Shop Foreman download the software update.

6. Use a blank USB flash drive with at least ****32GB or 8GB**** of space. Follow the on-screen instructions to download the software files.

NOTE: When downloading the software file, always select the MAC version, regardless of the computer being used.

7. Download the software update file to your local PC's desktop. Make sure to select the "MAC" radial button for all downloads Fig. 2.

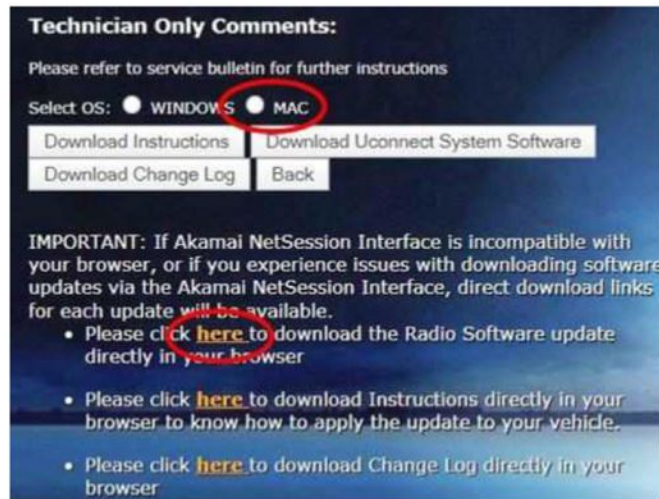


Fig. 2

MAC Radial Button

8. Download the radio software from DealerConnect to a blank USB flash drive. The USB flash drive should be at least ****32GB** and formatted to **NTFS** and/or a **8GB** and formatted to **NTFS****.

NOTE: ● The **U29.42** flash drive should be formatted to **NTFS**.

● The ****U40.20** flash drive should be formatted to **NTFS****.

9. **There should only be one file on the USB root directory labeled as a "fca-my24-prod-signed-usb_update-U29.42.SPEECH.KR-fullupdate.zip" folder for the U29.42 update.
- For the 40.20 Update, download "fca-my24-prod-signed-usb_update-U40.20.SPEECH.KR-SYSTEM_ONLY.zip"*** Fig. 3.

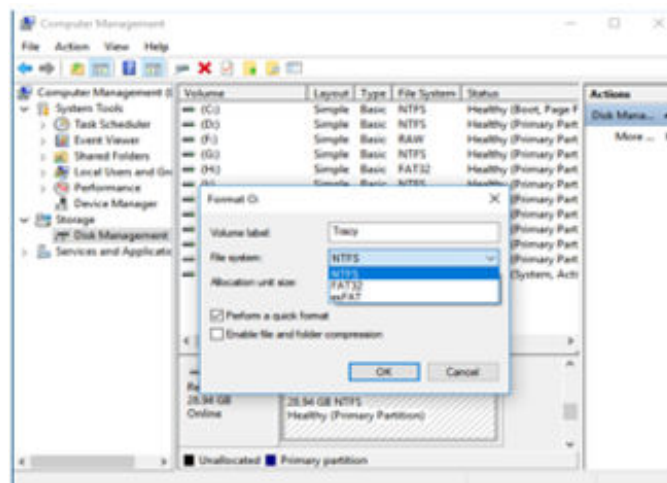


Fig. 3

Zip Folder

10. Do not unzip the folder/file and move all contents to the root directory of the USB.
11. Once the USB flash drive have been created, it is recommended to label the USB flash drive with the bulletin number and proper radio Sales Codes.
12. Turn the engine on and insert the correct USB flash drive with new software into the USB port.

CAUTION!

Make sure no other device is plugged into any of the USB ports while performing this software update. If other devices are connected to USB ports during this procedure, it may cause a failure of files to be loaded which can cause the radio to need replacement.

13. Once the system has verified there is an available update, press the “**Update Now**” button. Make sure the vehicle is in park. Do NOT turn the ignition off until the two minute timer has expired. The ignition doesn't have to be turned off to update the radio's software Fig. 4 .

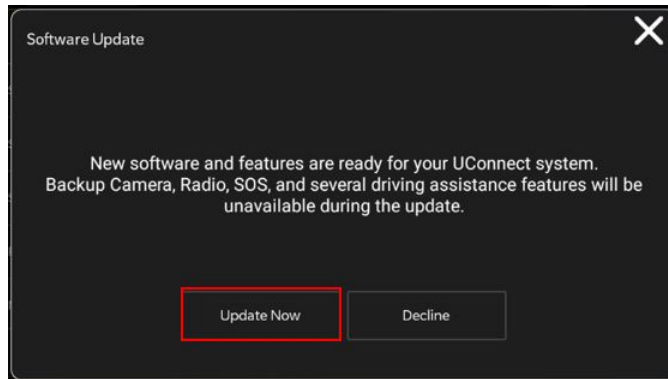


Fig. 4
Software Update

14. Press the “**Continue**” on the display screen Fig. 5.

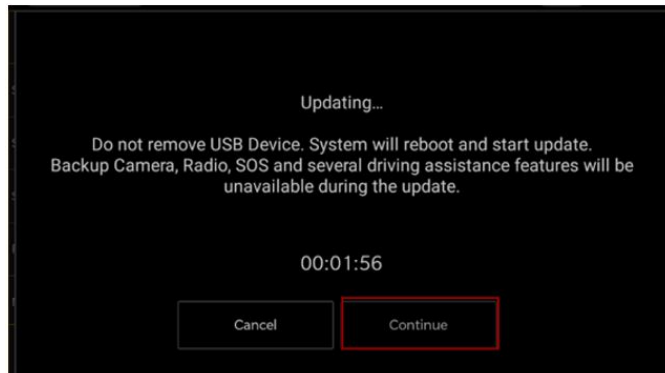


Fig. 5
Software Updating

15. The radio will reboot and the software update will begin. The software update should only take 30 minutes Fig. 6.

NOTE: DO NOT turn off the vehicle when the software update is completed and told to remove the USB flash drive.



Fig. 6
Update Successful

16. **DO NOT** turn off the ignition at this point. The software update is still in process. Wait until the radio restarts and the home screen is displayed. This should take around five minutes.

17. If the radio displays an error pop up “ SWITCH-INVALID_BINARY“ after successful radio update, ignore this error message and press “**OK**” to continue [Fig. 7](#).

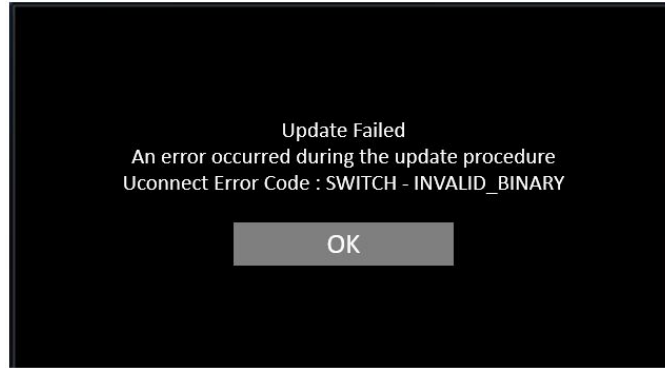


Fig. 7
Update Failed

18. Press “**OK**” to continue [Fig. 8](#).

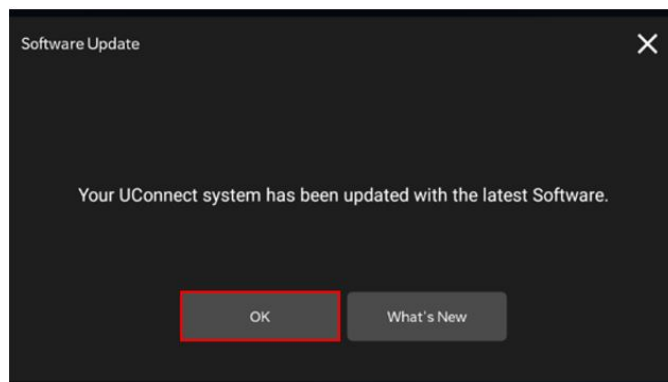


Fig. 8
Completed Update

19. Check if the radio software level has been updated. Go to “**Vehicle Settings**” then select “**System Information**” and look for “**Radio Version**”.

20. What is the current radio software level?

- U29.42 >>> Radio will still need one more USB flash drive update. **Perform the update to U40.20 SW.** Proceed to [Step 3](#).
- **U40.20** >>> Radio update is complete. Proceed to [Step 21](#).

21. Select and run “**Perform Factory Reset**”. This can be found in the radio menu under Vehicle Settings > Reset > Perform Factory Reset.

22. Once the factory reset is completed, turn off the ignition, open and close the driver's door and then let all modules go to sleep. Make sure the scan tool is **NOT** connected to the vehicle.

23. After all the modules have been in sleep mode for five minutes, turn the ignition back on.

24. Before clearing all DTCs, cycle the ignition OFF and back to RUN quickly (within two seconds).

25. Using the wiTECH, clear all DTCs that may have been set in any module due to reprogramming.

26. Ensure the TBM is updated with the latest available software of R3G7 or higher.

NOTE: Suggest to customer to repeat the wireless device pairing again after deleting the existing pairing from the phone.

POLICY:

Reimbursable within the provisions of the warranty.

This bulletin is supplied as technical information only and is not an authorization for repair. No part of this publication may be reproduced, stored in a retrieval system, or transmitted, in any form or by any means, electronic, mechanical, photocopying, or otherwise, without written permission of FCA US LLC.